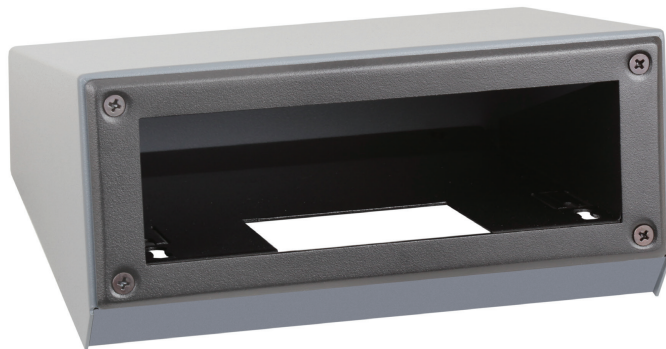
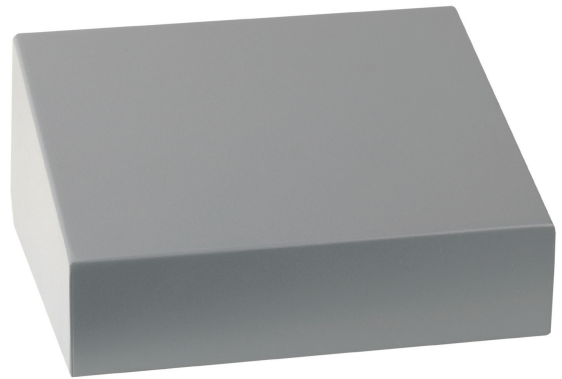


ACCESSORIES
Model WDG1R
Table Top Wedge Mount

The WDG1R is a tabletop enclosure for mounting any RACK-UP module. All steel construction.



Front



Rear

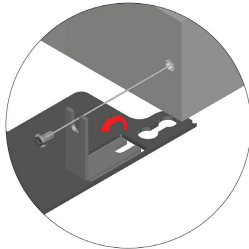


With Product Installed
(RU-SH1 available separately)

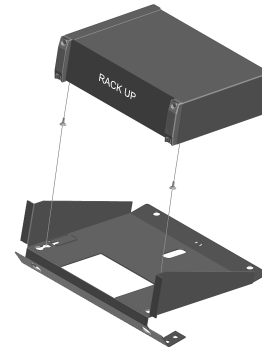
ACCESSORIES
Model WDG1R
Table Top Wedge Mount

Installation/Operation

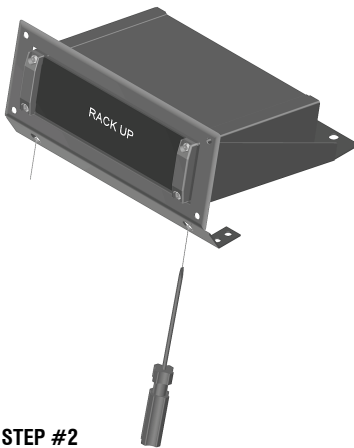
CE Declaration of Conformity available from rdlnet.com.
Sole EMC specifications provided on product package.
Specifications are subject to change without notice.



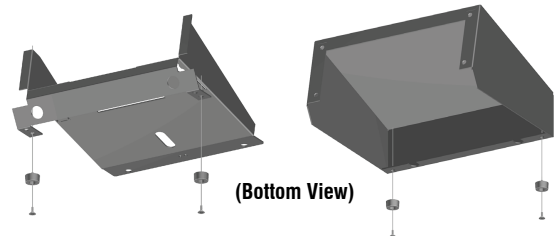
NOTE: When installing a RACK UP product that is in a plastic box start by removing the screws from the back of the RACK UP. Bend the tabs on the mounting unit up at a 90° angle. Secure the unit to the mounting chassis using the screws. Continue to Step 3.



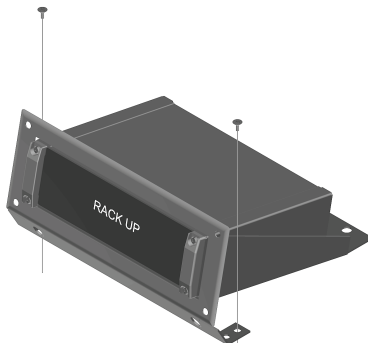
STEP #1
Start the screws into the bottom of the RACK-UP but do not install them all the way. Place the RACK-UP onto the chassis. The screw heads will pass through the rear position in the cutout.



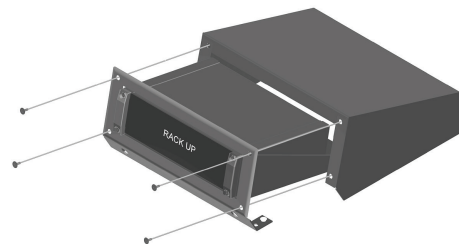
STEP #2
Slide the unit forward until the screws are seated in the forward position of the cutout. Tighten the screws to secure the unit in the chassis. A black laminate is provided to cover these two holes. If desired adhere the laminate to the chassis now.



NOTE: If the unit will not be permanently mounted to a surface skip Step 3. Instead install the included feet using the 6-32 screws. Install the feet in the locations shown on the above drawing. Continue to Step 4.



STEP #3
Secure the chassis to the surface with screws.



STEP #4
Slide the top cover toward the chassis. Once seated secure the top cover to the chassis with the four included screws.