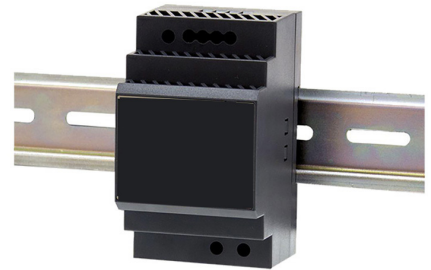


VISION.NET DIN RAIL POWER SUPPLY - 24V, 60W

Date: _____
Type: _____
Firm: _____
Name: _____
Project: _____

Vision.Net DIN Rail Power Supplies are DIN rail mountable PSUs that convert incoming power from 100-277V AC systems to regulated 24V DC power to all Vision.Net modules in a DIN rail tray or enclosure. Available in 60W and 150W versions, there is a PSU available for any sized application. With a convection cooled, fanless design, these UL listed power supplies offer quiet operation and power where you need it.



- 100-277V AC power supply units - power solutions for your distribution voltage
- Standard 35mm DIN Rail mounting - easy to install using either Vision.Net or off-the-shelf DIN rail mounting materials
- Convection cooled - fanless design for quiet operation
- UL listed - safe and secure operation
- 150W version also available - wattage options for any sized application



Specifications

Due to continuous improvements and innovations, specifications may change without notice.

Electrical

AC power in	Class2, screw-down terminal
Supply Voltage	85-264 V AC, 47-63 Hz (277V Operable)
Input Current (Max)	1.2A @ 115 V AC, 0.8A @ 230 V AC
Rated output current	2.5 A @ 24 V DC
Rated output power	60 W
DC Power Out connector	2 x screw-down terminal
*Recommended cable type: 14-18 AWG	

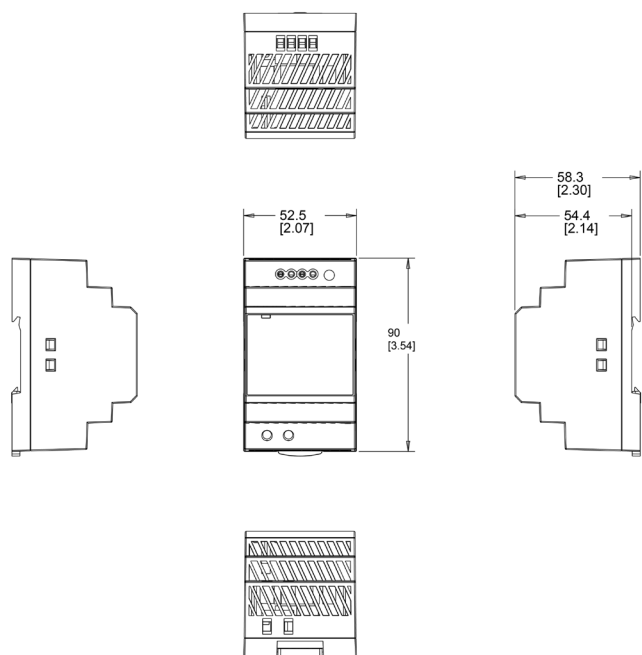
Certification and Safety

Ingress protection rating	IP 20
Approbations	UL, cUL, CE, RCM
Conformity	EU Safety: EN61558-1, EN 62368-1, EU EMC: EN55032, EN61000-3-(2-3), EN61000-4(2-6, 8, 11), AU/NZ EMC: CISPR32, US Safety: UL 61010-1(2-201), UL62368-1, Canada Safety: CSA C22.2 No. 107.1, Other: DIN43880, IEC 60715

Installation

Mounting	DIN rail
DIN Modules (standard unit)	3SU
DIN Rail Compatibility	TS35/7.5
Orientation	Vertical only

Dimensions



Physical

Construction	Plastic
Housing Color	Black, smooth texture
Dimensions (H x W x D)	
90 x 52.5 x 58.3 mm (3.54 x 2.07 x 2.3 in)	
Weight	0.19 kg (0.4 lb)
Operating Temperature	-30 - 45°C (-22 - 113°F)
Maximum surface temperature at 25°C ambient	60° C
Total calculated heat dissipation @ 115 VAC	34 btu/hr
Relative humidity	20 - 90% non-condensing
Cooling System	Free air convection, fanless

Product and Accessories

Product Name	Order Code
VISION.NET DIN Rail Power Supply - 24V, 60W	53906-302



© 2022 Signify Holding. All rights reserved. All trademarks are owned by Signify Holding or their respective owners. The information provided herein is subject to change, without notice. Signify does not give any representation or warranty as to the accuracy or completeness of the information included herein and shall not be liable for any action in reliance thereon. The information presented in this document is not intended as any commercial offer and does not form part of any quotation or contract, unless otherwise agreed by Signify. Data subject to change.

Strand

www.vari-lite.com/global/products/vision-net-power-supplies

11/03/2022