

VISION.NET DIN RAIL POWER SUPPLIES

OVERVIEW

This document provides installation and operation instructions for the following product(s):

PRODUCT NAME	ORDER CODE
Vision.Net DIN Rail PSU, 24VDC, 150W	53906-301
Vision.Net DIN Rail PSU, 24VDC, 60W	53906-302

INSTALLATION

- The appropriate mounting orientation for the power supply is vertical, with the input terminals orientated down and output terminals orientated up. Alternate mounting orientations are not advised.
- Prevent overheating by maintaining appropriate clearances: 5mm (0.2 in) left and right, 40mm (1.6 in) above and 20mm (0.8 in) below. A 10-15cm (4-6 in) clearance must be maintained when the adjacent device is a heat source.
- The recommended hook-up wire is a UL1007 type or similar. The characteristics are a 0.8-2.1 mm² (14-18 AWG) copper stranded wire that is tinned and PVC coated with a temperature rating of 80° C at 300 V.
- Strip wire to 6mm (0.23 in.) and insert into appropriate terminals, observing polarity, making sure that stranded wires are fully inserted. Use a 4mm (5/32 in.) slotted screwdriver to tighten the terminals. Torque the terminals according to the chart below.

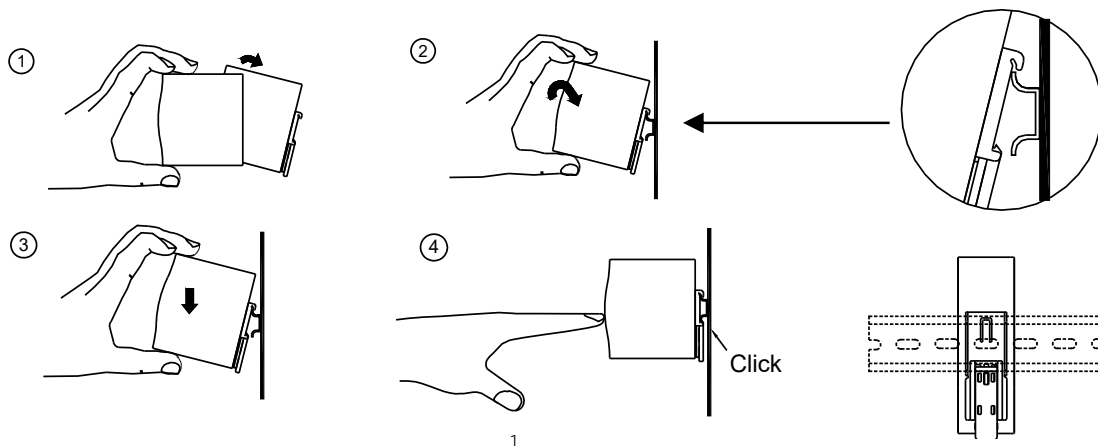
60W Input	3 lb-in
60W Output	4.4 lb-in
150W Input/Output	4.4 lb-in

MOUNTING THE POWER SUPPLY

NOTE: Mount power supply on compatible TS35/7.5 mm DIN rail observing proper orientation.

To mount Vision.Net DIN Rail Power Supplies:

- Step 1. Tilt the power supply backwards slightly.
- Step 2. Fit the power supply over the top hat of the DIN rail.
- Step 3. Slide power supply down until fully engaged with the top hat.
- Step 4. Push the power supply forward to engage to the DIN rail fully.
- Step 5. Gently rock the unit back and forth to ensure it's locked in place.



VISION.NET DIN RAIL POWER SUPPLIES

To remove unit(s) from DIN rail:

- Step 1. Turn off and disconnect line and load wiring.
- Step 2. Gently pry the power supply from the bottom using a slotted screwdriver if required.

CONNECTING POWER

Once power supply is mounted to the DIN rail power the supply on. A blue LED should illuminate on the front face of the unit.

ADJUSTING OUTPUT VOLTAGE

If output voltage is lower than the expected 24 V DC an adjustment can be made.

To adjust output voltage on the Vision.Net DIN Rail Power Supplies:

- Step 1. Disconnect all load wiring.
- Step 2. Connect a calibrated digital multi-meter to the output terminals of the power supply.
- Step 3. Using a slotted screwdriver adjust the “Vo Adj” to the right of the output terminals. Turn clockwise or counterclockwise until the optimal voltage is displayed on the digital multi-meter.

WARNINGS AND NOTICES

When using electrical equipment, basic safety precautions should always be followed including the following:

- For indoor, dry locations use only. Do not use outdoors.
- Do not mount near gas or electric heaters.
- Equipment should be mounted in locations and at heights where it will not readily be subjected to tampering by unauthorized personnel.
- The use of accessory equipment not recommended by the manufacturer may cause an unsafe condition and void warranty.
- Not for residential use. Do not use this equipment for other than intended use.



©2021 Signify Holding. All rights reserved.

All trademarks are owned by Signify Holding or their respective owners. The information provided herein is subject to change, without notice. Signify does not give any representation or warranty as to the accuracy or completeness of the information included herein and shall not be liable for any action in reliance thereon. The information presented in this document is not intended as any commercial offer and does not form part of any quotation or contract, unless otherwise agreed by Signify. Data subject to change.

CUSTOMER SERVICE

If you have any questions regarding this product, please contact Customer Service by phone at +1 214-647-7880 or by email at entertainment.service@signify.com.