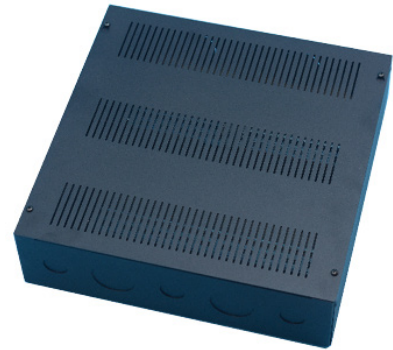


VISION.NET DIN RAIL ENCLOSURE - SMALL

Date: _____
Type: _____
Firm: _____
Name: _____
Project: _____

The Vision.Net DIN Rail Enclosure allows easy installation of DIN rail mountable Vision.Net modules. The NEMA 1 rated enclosure includes two 35mm DIN rails, making it easy to mount and secure Vision.Net and third-party DIN rail components. The enclosure is flush or surface mountable for use in any application and includes 1/2" and 3/4" knockouts for conduit or non-metallic (NM) connectors, simplifying installation. It also has an adjustable voltage barrier, allowing you to configure the enclosure however you need it.



- Standard 35mm DIN Rail - easily integrate Vision.Net and thirdparty DIN rail components
- Surface mountable - install wherever you need it
- NEMA 1 rated - secure your control devices from unauthorized access or damage
- 1/2" and 3/4" knockouts - connect conduit or non-metallic (NM) connectors without drilling into the box
- Adjustable voltage barrier (3 horizontal, 3 vertical) - configure your enclosure to meet your needs.



Specifications

Due to continuous improvements and innovations, specifications may change without notice.

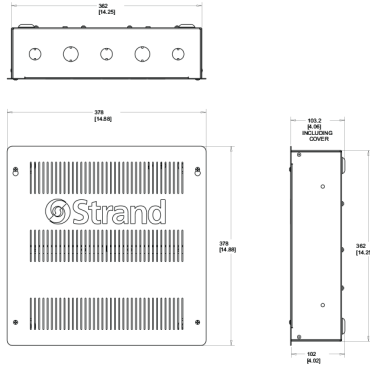
Certification and Safety

Conformity	ANSI/UL 50/50E, CSA C22.2 No. 94.1/94.2, NEMA Type 1, DIN 43800, IEC 60715
------------	--

Installation

Mounting	Flush or Surface Mount
DIN Modules (standard unit)	40SU
DIN Rail	2x TS35/7.5, 13.78 in. (350 mm)
Mounting Holes, Flush Mount	2x Thru-hole style per side *Reccomended 1/4" Rounded Head Fastener (not included)
Mounting Holes, Surface Mount	4x Thru-hole style, rear *Reccomended 5/16" Rounded Head Fastener (not included)
Knockouts - Trade Size	3x 1/2" and 3x3/4"
Class 1/2 Voltage Separation	Adjustable Voltage Barrier
Ground/Earth Connection	Self-clinching stud #10, 10-32 bonding nut
Maximum installed device height	86 mm (3.39 in)

Dimensions



Physical

Construction	Cold Rolled Steel, 18 gauge
Color	Black, Fine texture, powder coated
Dimensions with cover (H x W x D)	378 x 378 x 103.2 mm (14.88 x 14.88 x 4.06 in)
Weight with cover	4.8 kg (10.5 lb)

Product and Accessories

Product Name	Order Code
VISION.NET DIN RAIL ENCLOSURE - SMALL	53906-001

Other enclosures & trays	Order Code
Vision.Net DIN Rail Enclosure - Large	53906-002
Vision.Net DIN Rail rackmount tray - horizontal	53906-101
Vision.Net DIN Rail rackmount tray - vertical	53906-102

