

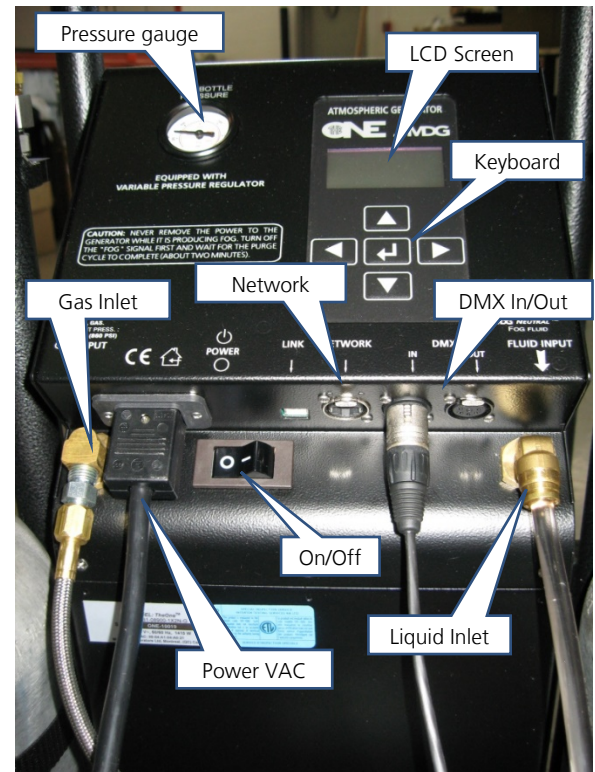


Installation

- Connect the gas inlet to a gas bottle via a flexible braided hose.
The gas inlet is a 1/4" male JIC 37° flare fitting.
- Connect the fog fluid container to the fluid inlet via a 3/8" plastic tube.
Open the vent on the container.
Leave the reservoir as close as possible to the MDG **theONE**.
- Connect the data wiring if necessary.
Male XLR-5 connector for DMX (DMX512-A protocol) and RDM (ANSI E1.20 protocol).
Male RJ45 connector for network(ArtNet, Pathport Protocol, Strand Shownet, ETC Net2 eDMX, Streaming ACN, ETC Net3).
- Connect the power cord, 100–250 VAC, 50/60 Hz, 1100-1480 W.
- Open the gas bottle and check the gauge, on top of the generator, to make sure there is enough pressure
MIN: 690 kPa (6.9 bar) / 100 psi, MAX: 17 MPa (172 bar) / 2500 psi.

The MDG **theONE** is ready to be powered on.

NOTE: At start-up, the MDG theONE tries to fill the internal reservoir. If there is not enough fog fluid, the generator will not operate.



Working with the keyboard (LOCAL Mode)

- Verify the communication mode in the «INTERFACE ▶ COMM. ». When the «AUTO» mode is activated, the MDG **theONE** is then controlled by DMX, if there is a signal. If the DMX wire is unplugged, the control remains local.
- When the generator is manually switched to «UNIT ON» mode («CONTROL ▶ UNIT ▶ ON»), the program starts the heating cycle («STATUS ▶ STATE = UNIT ON») for approximately 8 minutes.
When the temperature reaches operating level («STATUS ▶ STATE = READY»), the Automatic Purging System™ (APS™) will be initiated («STATUS ▶ STATE = PURGE»). After the first purging cycle is completed (20 to 60 sec.), the generator is ready to produce fog («STATUS ▶ STATE = READY»).
- The Fog / Haze mode is controlled by the menu («CONTROL ▶ MODE»).
Choosing «HAZE» switch the MDG **theONE** in a *Haze mode*, while «FOG» will switch the MDG **theONE** in a *Fog mode*.
Fog / haze emission can be controlled by adjusting the working pressure of the internal reservoir («CONTROL ▶ PRES. HAZ» or «CONTROL ▶ PRES. FOG»).
- To produce Fog / Haze switch the generator to «FOG ON» mode («CONTROL ▶ FOG ▶ ON»).
Depending of the mode choice («CONTROL ▶ MODE», or see «STATE ▶ MODE»), the MDG **theONE** will start to produce a haze (HAZE mode) or a fog (FOG mode), with an internal pressure defined by the working mode pressure.

The MDG **theONE** will produce fog as long as the control parameters are within specifications, the liquid reservoir filled and the gas bottles pressurized.

If a critical problem occurs, the fog generator automatically shuts down, and displays an error message in the **Status Menu** while the LDC Screen will flash.

Working with DMX/RDM Control (DMX Mode)

- Connect a DMX line to DMX In connector (Male XLR-5 connector).
- Select the communication mode in the «INTERFACE ▶ COMM. ». When the «AUTO» mode is activated, the MDG **theONE** is then controlled by DMX, if there is a signal.
- Set the DMX Start Address in the Interface Menu («INTERFACE ▶ COMM. ▶ DMX ADDR») and choose any value between 1 and 508 (508+5 = 512, last DMX channel).

The DMX Start Address can be reassigned via a RDM control.

The Interface uses five (5) DMX channels:

| | | | | |
|-----------|--|--------------------|------------|---------------------|
| Channel 1 | 0 (0%) < UNIT OFF | ≤ 128 (50%) | < UNIT ON | ≤ 255 (100%) |
| Channel 2 | 0 (0%) < MODE HAZE | ≤ 128 (50%) | < MODE FOG | ≤ 255 (100%) |
| Channel 3 | 0 (0%) – 255 (100%) , FOG OUTPUT (from minimum to maximum pressure) | | | |
| Channel 4 | 0 (0%) < FOG OFF | ≤ 128 (50%) | < FOG ON | ≤ 255 (100%) |
| Channel 5 | 0 (0%) – 255 (100%) , EXTERNAL FAN (from minimum to maximum speed) | | | |

Working with Network Control (Network Mode)

The network interface, developed by **Pathway Connectivity Solutions**, supports all major Ethernet protocols. If you don't have a control program, install **Pathscape** (4.3.2 or above) by downloading the latest build from <https://pathway.acuitybrands.com/>.

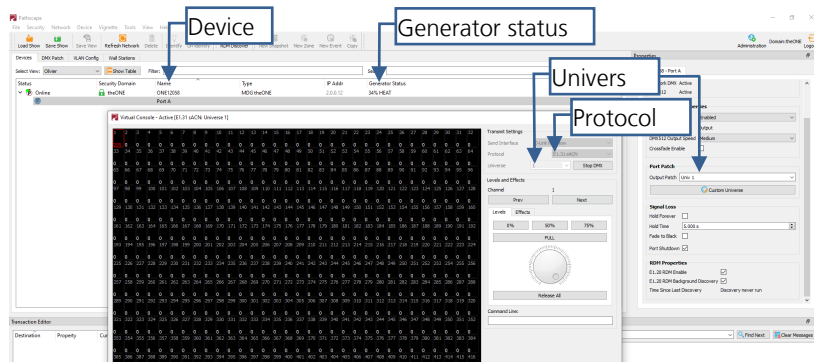
- Reset the IP address on your computer to 10.0.0.1 with a subnet mask of **255.0.0.0**. If the computer uses a wireless card, disable it and turn the transmitter off.
- Connect to the **MDG theONE** via an Ethernet switch, using a standard Ethernet cable.
- Switch the control mode to Ethernet («INTERFACE ▶ COMM. ▶ ETHERNET»).
- Start **Pathscape**.

To modify the properties of the Pathway interface, you need to log In the Security Domain. The MDG theONE is sent with a Recovery Key to be able to reset the password of the Domain (See *Pathscape Manual for more details*).

- By default, the interface is configured for Dynamic IP, and for all the major protocols: Pathway ssACN (Secure sACN), E1.31 streaming ACN (sACN), Art-Net, Pathport Protocol, ShowNet.
- The field **Generator Status** is a summary of the status of the fog generator, including the fail status.
- The **Universe Number**, as well as the **DMX Start Address** can be assigned either on the fog generator or in the properties tab.

Press **Send** button when you want to update the MDG theONE.

NOTE: DMX output, configured as whole universe, can act as a E1.20 RDM controller, when used with Pathscape.



... For further details, please read the **User Guide**.