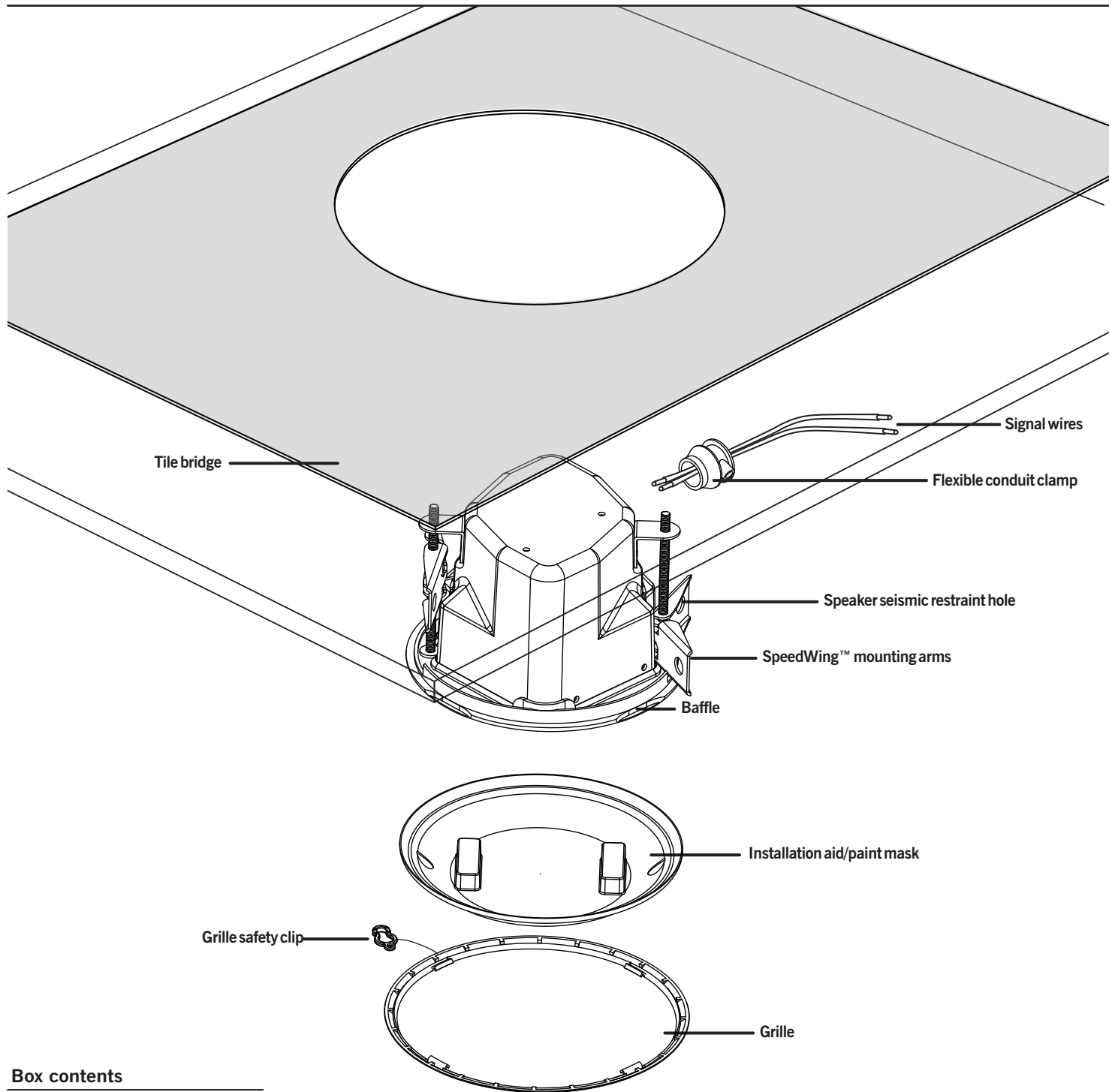




**CM31-EZ** | Install Instructions For:  
CM31-EZ speaker



**Box contents**

- 1 Speaker
- 1 Grille
- 1 Paint mask
- 2 Wire nuts
- 1 UL-listed conduit clamp

Note: Tile bridge included, ships in separate box.

1.435.647.9555 | 800.647.TUBE | www.soundtube.com

**CM31-EZ**

© 2009 SoundTube Entertainment, Inc. All rights reserved. PN INS-CM31-EZ\_Rev10.26.09

**Warning**

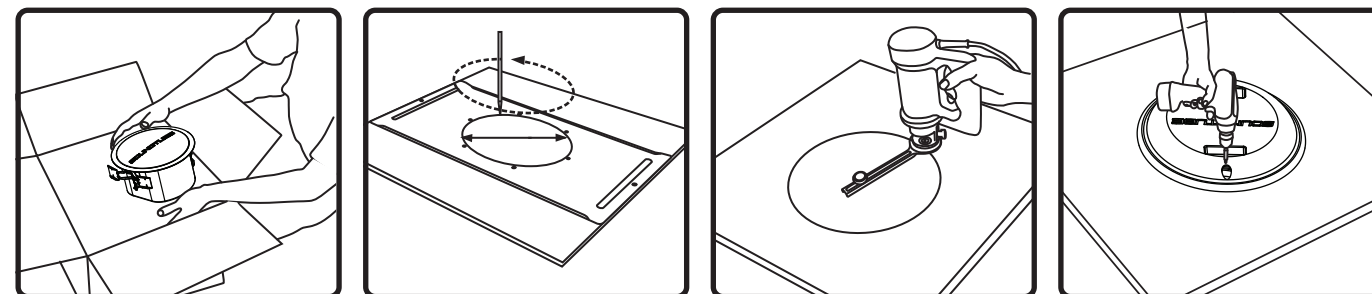
SoundTube speakers must be installed by a professional audio installer/contractor. For safety and for optimum audio performance, installer must follow all directions issued by SoundTube Entertainment.

**Warning**

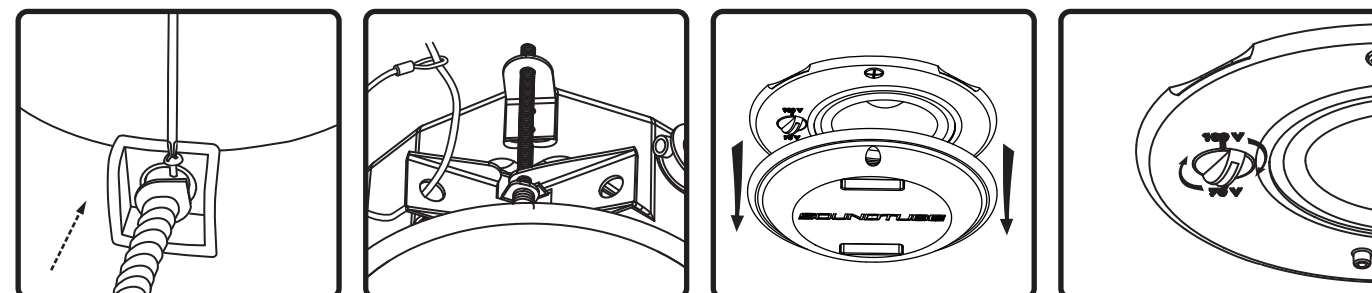
Do not spec or install speaker near support beam, ventilation duct or other structure that may interfere with speaker function or dispersion.

**CM31-EZ** | Drop-tile Installation Instructions For:  
CM31-EZ speaker

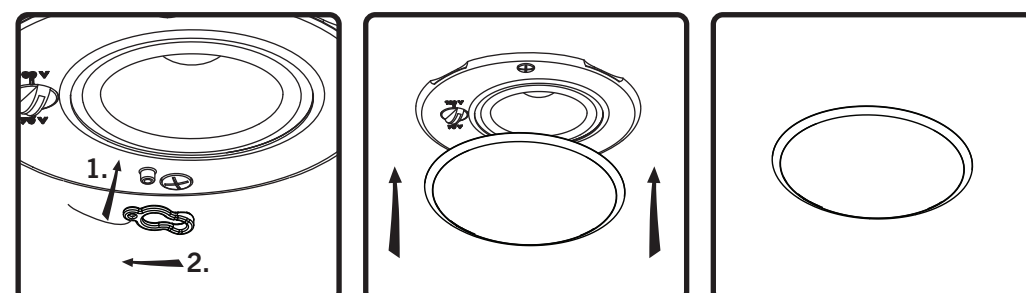
1.435.647.9555 | 800.647.TUBE | www.soundtube.com



1. Unpack speaker. Leave paint mask in place until after speaker is installed or painting is complete. Tile bridge ships in separate box.
2. Use included tile bridge to mark cutout on tile.
3. Use RotoZip or other tool to cut hole. Hole diameter: 5.6 in. (142 mm).
4. Insert speaker into mounting hole on ground with tile bridge and paint mask in place. Tighten both screws on the baffle face to actuate the mounting wings. Firmly secure both screws, **DO NOT OVERTIGHTEN**. Put assembly into tile grid.



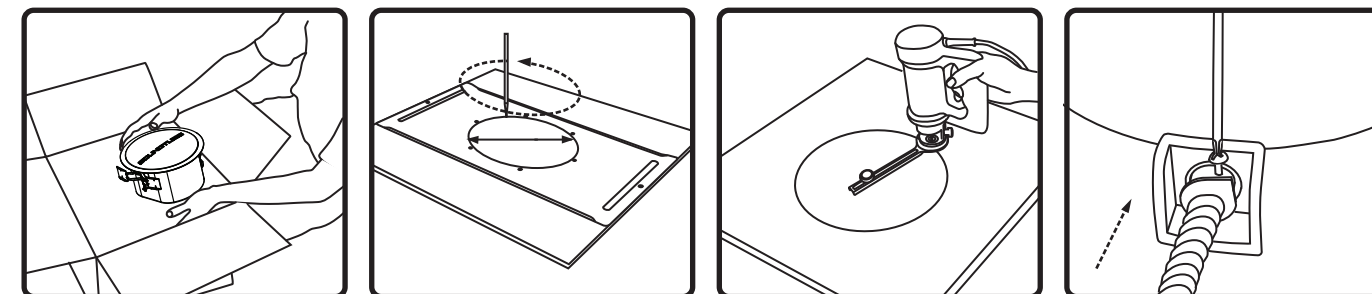
5. Feed speaker wires through conduit clamp and connect with wire nuts. Push wire nuts into backcan and affix conduit clamp.
6. If required, attach seismic restraint system to hole in clamping arm, then to reinforced structure (safety cable not included).
7. Remove paint mask unless painting is required. In that case, follow steps 8-11 when painting is complete.
8. Adjust tap switch to proper setting. Switch is preset to the highest setting in the 70.7-volt mode.



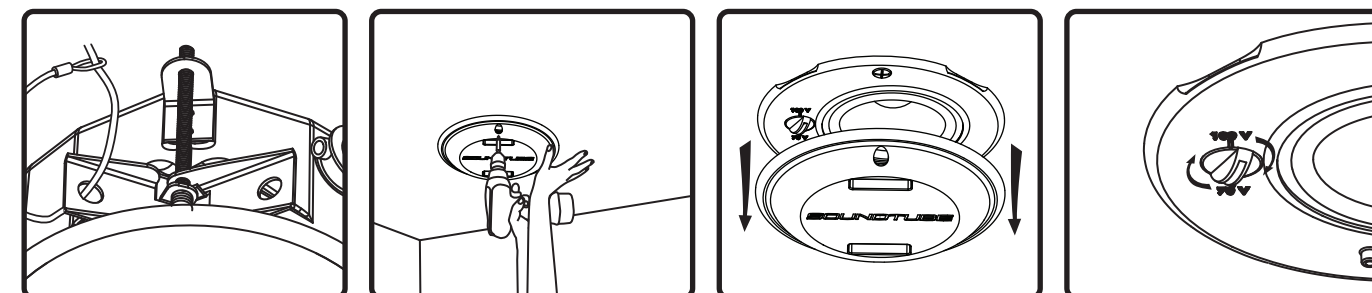
9. Attach grille safety clip by placing the large end of the clip over snap-fit post (1), then sliding clip until small end snaps into place around post (2).
10. Align tabs on snap-fit grille with slots in baffle, gently press grille into place.
11. Done!

**CM31-EZ** | Sheetrock Installation Instructions For:  
CM31-EZ speaker

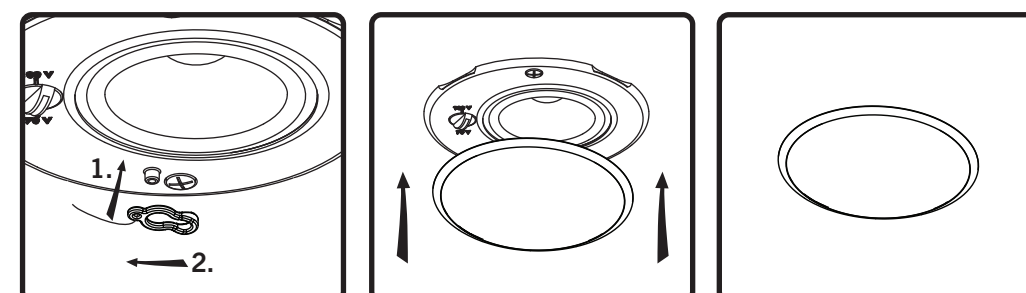
1.435.647.9555 | 800.647.TUBE | www.soundtube.com



1. Unpack speaker. Leave paint mask in place until after speaker is installed or painting is complete.
2. Use included tile bridge to mark cutout on sheetrock. Tile bridge ships in separate box.
3. Use RotoZip or other tool to cut hole. Hole diameter: 5.6 in. (142 mm).
4. Feed speaker wires through conduit clamp and connect with wire nuts. Push wire nuts into backcan and affix conduit clamp.



5. If required, attach seismic restraint system to hole in clamping arm, then to reinforced structure (safety cable not included).
6. Insert speaker into mounting hole with paint mask in place. Tighten both bolts on the baffle face to actuate the mounting wings. Firmly secure both bolts, **DO NOT OVERTIGHTEN**.
7. Remove paint mask unless painting is required. In that case, follow steps 8-11 when painting is complete.
8. Adjust tap switch to proper setting. Switch is preset to the highest setting in the 70.7-volt mode.



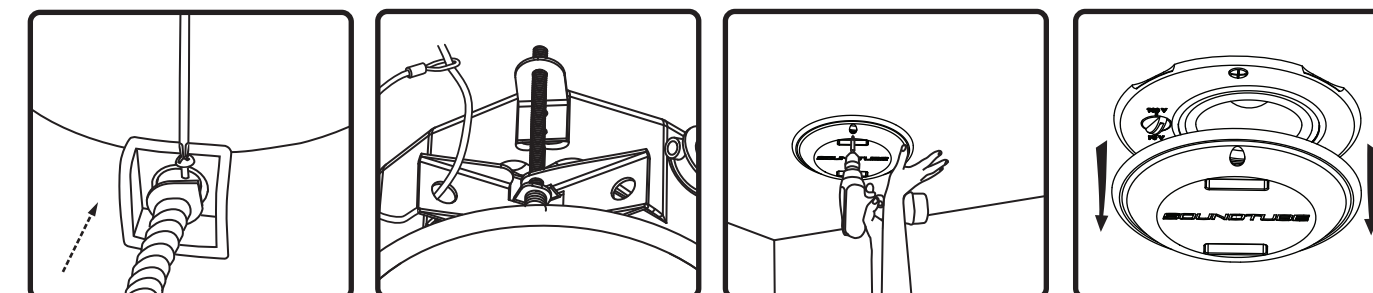
9. Attach grille safety clip by placing the large end of the clip over snap-fit post (1), then sliding clip until small end snaps into place around post (2).
10. Align tabs on snap-fit grille with slots in baffle, gently press grille into place.
11. Done!

**CM31-EZ** | Pre-Construction Bracket Instructions For:  
CM31-EZ speaker (Pre-construction bracket sold separately)

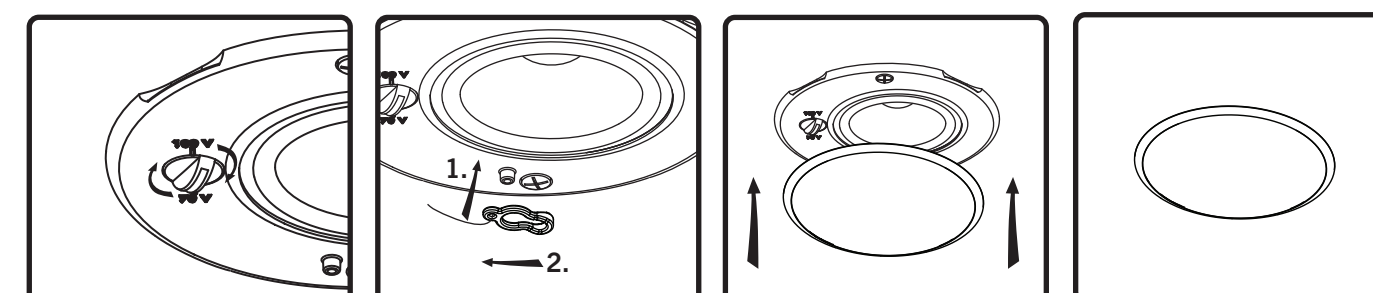
1.435.647.9555 | 800.647.TUBE | www.soundtube.com



1. Nail or screw bracket to joists.
2. Finish installing ceiling.
3. Use RotoZip or other tool to cut hole.
4. Unpack speaker. Leave paint mask in place until after speaker is installed or painting is complete.



5. Feed speaker wires through conduit clamp and connect with wire nuts. Push wire nuts into backcan and affix conduit clamp.
6. If required, attach seismic restraint system to the sheet-metal tab on the rear panel of the speaker, then to reinforced structure (safety cable not included).
7. Insert speaker into mounting hole. Tighten both bolts on the baffle face to actuate the mounting wings. **DO NOT OVERTIGHTEN**.
8. Remove paint mask unless painting is required. In that case, follow steps 9-12 when painting is complete.



9. Adjust tap switch to proper setting. Switch is preset to the highest setting in the 70.7-volt mode.
10. Attach grille safety clip by placing the large end of the clip over snap-fit post (1), then sliding clip until small end snaps into place around post (2).
11. Align tabs on snap-fit grille with slots in baffle, gently press grille into place.
12. Done!