



**RDL**<sup>®</sup>  
Radio Design Labs

SPECIALISTS IN PRACTICAL PRECISION ENGINEERING™

## PT™ SERIES Model PT-ASG1 Audio Signal Generator

- Portable Audio Generator
- Selectable Mic or Line Level Output
- Precision Stable Output
- Precision Audio Reference Level
- Balanced and Unbalanced Outputs
- Operation from a 9 V Battery or 24 Vdc
- Connectorized Outputs
- Programmable +4 dBu or +6 dBu Output
- Portable or Bench Operation

The PT-ASG1 is part of the group of versatile and convenient portable products from Radio Design Labs. The PT Series feature the superior engineering and components common to RDL products. A stable internal reference sets a new standard for accuracy in portable instruments. Durable yet lightweight metal enclosures house superior circuitry for years of unparalleled performance. Test leads and a bench top stand are included. An optional carrying case (PT-IC1) and AC power adapter (North America; PS-24S type, Continental; PS-24AX) are available.

**APPLICATION:** The PT-ASG1 is the ideal choice in applications requiring a stable audio signal source for system verification, alignment and testing.

The PT-ASG1 is a portable audio oscillator providing stable output levels. The internal oscillator operates at 700 Hz allowing aural monitoring of the signal without the fatigue associated with oscillators running at a higher frequency such as 1 kHz. The 700 Hz signal is in the midrange passband of the audio system while being easily distinguished from either 400 Hz or 1 kHz signals. The oscillator circuit is FET controlled for stability. The oscillator output is compared against an internal temperature-stable reference in a gain controlled loop that adjusts the final output level. The resulting output level stability is suited to accurate bench top audio testing.

Two outputs are provided on the PT-ASG1. The XLR balanced output is front-panel switch selectable for MIC or LINE level. The line level is factory set to +4 dBu, but can be programmed to provide +6 dBu. The level preset (+4 / +6) switch is located in the battery compartment. When the front-panel level switch is set to MIC, the XLR output level is set to -46 dBu, 50 dB below +4. The unique PT-ASG1 output network produces the equivalent output level into low impedance (200 Ohms) and higher impedance (>1000 Ohms) mic preamps. This makes the PT-ASG1 the ideal signal source for 50 dB mic-to-line gain setup of any RDL module or other industry mic preamp. The second output is a continuous -10 dBV on a phono jack. This signal is matched to consumer audio inputs or modules with a -10 dBV unbalanced audio input.

The PT-ASG1 operates either from an internal 9 volt battery or from an external 12 Vdc to 30 Vdc supply. When operated from the internal 9 volt battery, the **LOW BATTERY** LED glows steadily when less than one hour operating time remains. The **POWER ON** LED is illuminated when the PT-ASG1 is operating from internal or external power.

The precise output stability, rugged construction and versatility make the PT-ASG1 the ideal portable or bench top instrument for audio equipment level adjustment.



# PT™ SERIES

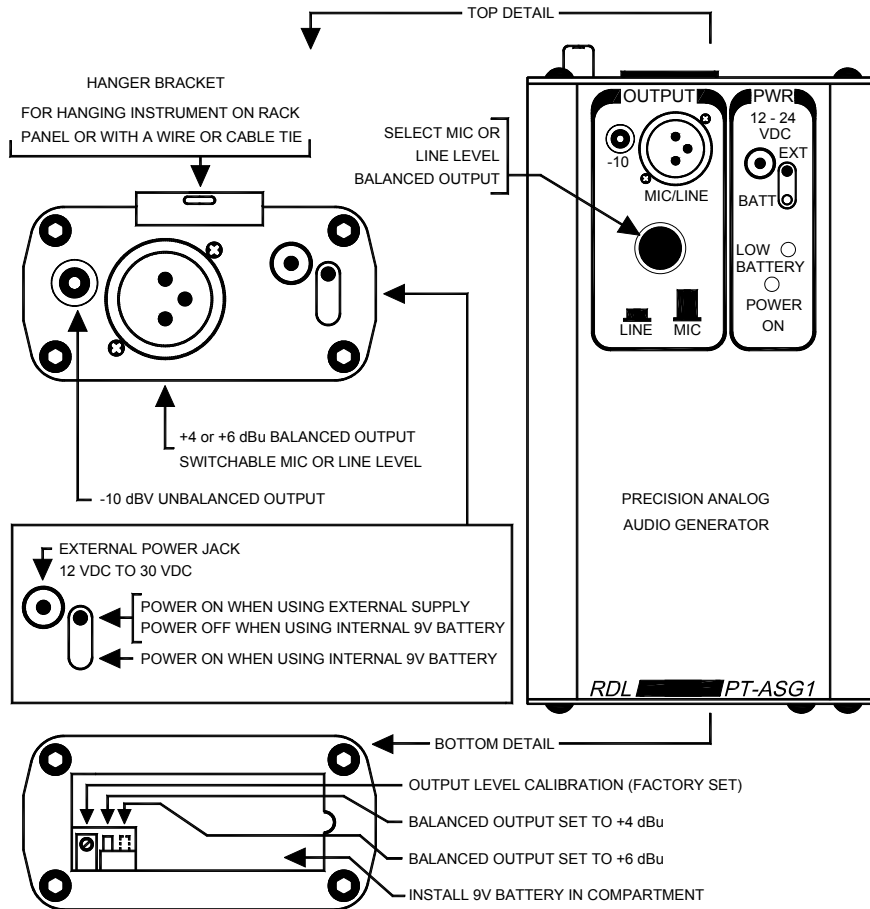
## Model PT-ASG1

### Audio Signal Generator

## Installation/Operation



EN55103-1 E1-E5; EN55103-2 E1-E4  
Typical Performance reflects product at publication time exclusive of EMC data, if any, supplied with product. Specifications are subject to change without notice.



### TYPICAL PERFORMANCE

Outputs (2):	XLR (Mic or Line Level), Phono (Consumer Level)
Balanced Output Level (Selectable):	
Line:	+4 dBu (+6 dBu, switch selectable, 2.5 kΩ load)
Mic:	-46 dBu (2.5 kΩ load, 50 dB below +4 dBu)
Unbalanced Output Level:	-10 dBV
Oscillator Frequency:	700 Hz nominal
Output Stability:	Better than 0.01 dB
Power Requirement:	9 V Internal, 12 to 30 Vdc External @ 20 mA
Dimensions:	
	Height: 5.22 in. 13.26 cm
	Width: 2.81 in. 7.14 cm
	Length: 1.39 in. 2.53 cm

EMC:

