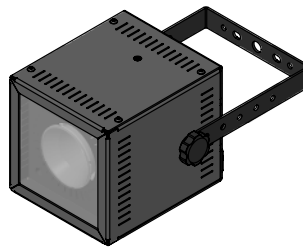


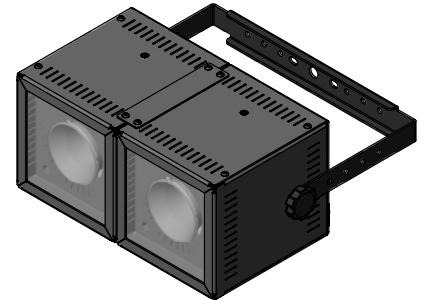
The cWORK is a theatrical worklight for overhead illumination of stages for work and rehearsal purposes. This light has a yoke for focus adjustability. The color temperature and color are suitable for painting to take place with little to no color discrepancy. This light is compact and no greater than 100W of LED light. The fixture intensity is controlled from a dimmer rack or a switch. If used with a dimming system, the cWORK will dim all the way out, mimicking an incandescent light fixture. The cWORK is a great solution for small budget-friendly spaces that need a versatile light for overhead lighting needs.

Features

- Designed as a cost-effective, high-impact LED worklight solution
- White - 3000K white, 97 CRI, 10,500 Lumens
- 59° reflector providing even light distribution.
- Optional reflector kit
- Black finish.
- Uniform white light distribution.
- Mounting bracket compatible with c-clamp and u-bolts. (Supplied by others.)
- Optional bracket to make double light.
- Unit Weight: 4.27 lbs. (1.94 kg)
- TUV/SUD listed, IP20 rated for indoor use only
- Proudly made in the USA
- Mains dimmable: 120VAC 60Hz
- Standard 1 meter cable
- TRUE1 input/output connector



cWORK - Single Unit



cWORK - Double Unit

Ordering Info

cWORK

00_CW_120_1000X_59_3.0K_97

cWORK Fixture, 90W, White 3000K, 97CRI with a 59° Reflector

The above comes standard with one (00_PC_12AWG_1.0M_T1F_EDM) Power Cord, 1 Meter, 12AWG, TRUE1 Female to Edison Male

Accessories

00_CW_REF_KIT

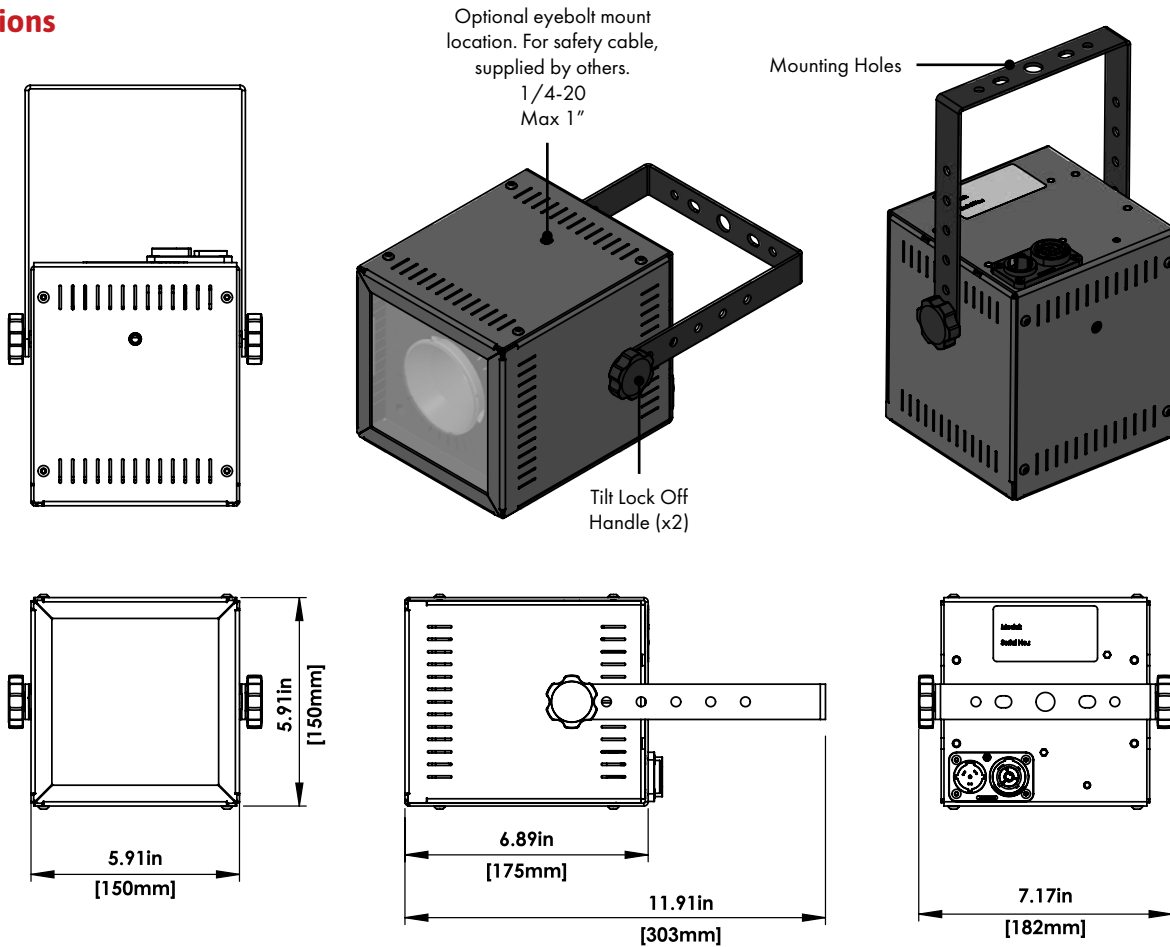
cWORK/cRUN Reflector Kit (26, 40, 70)

00_CW_DBL_KIT

cWORK/cRUN Double Mounting Kit

The cWORK/cRUN Double Mounting Kit comes with one (00_PC_12AWG_0.5M_T1F_T1M) Power Cord, 0.5 Meter, 12AWG, TRUE1 to TRUE1

Dimensions



Photometrics (White) 3,000K

