

ioSTATION24c

Audio Interface and Production Controller

Owner's Manual



Table of Contents

1 Overview — 1

- 1.1 Introduction — 1
- 1.2 What's in the Box? — 2
- 1.3 What's in your My PreSonus Account — 3
- 1.4 Firmware Updates — 3

2 Hookup — 5

- 2.1 Back Panel Connections — 5
- 2.2 Top-Panel — 6
- 2.3 Connection Diagram — 7

3 Connecting to a Computer — 8

- 3.1 Installation for Windows — 8
 - 3.1.1 Universal Control (Windows) — 8
 - 3.1.2 Loopback Recording (Windows only) — 10
- 3.2 Installation for macOS — 11
- 3.3 Using the ioSTATION24c with Popular Audio Applications — 11

4 Studio One — 13

- 4.1 Getting Started — 13
- 4.2 Channel Strip — 14
- 4.3 Transport Controls — 14
- 4.4 The Session Navigator — 15
 - 4.4.1 F1-F4 Functions — 16
- 4.5 Automation Controls — 16
- 4.6 Control Link — 17

5 Pro Tools (HUI) — 18

- 5.1 Getting Started — 18
- 5.2 Channel Strip — 19
- 5.3 Transport Controls — 19
- 5.4 The Session Navigator — 20
- 5.5 Automation Controls — 20

6 Logic (MCU) — 21

- 6.1 Getting Started — 21
- 6.2 Channel Strip — 23

- 6.3 Transport Controls — 23
- 6.4 The Session Navigator — 24
- 6.5 Automation Controls — 25
- 6.6 Bypass — 25

7 Cubase / Nuendo (MCU) — 26

- 7.1 Getting Started — 26
- 7.2 Channel Strip — 28
- 7.3 Transport Controls — 28
- 7.4 The Session Navigator — 29
- 7.5 Automation Controls — 30

8 Live (MCU) — 31

- 8.1 Getting Started — 31
- 8.2 Channel Strip — 32
- 8.3 Transport Controls — 32
- 8.4 The Session Navigator — 33
- 8.5 Automation Controls — 34
- 8.6 Bypass — 34

9 Studio One Artist Quick Start — 35

- 9.1 Installation and Authorization — 35
- 9.2 Setting Up Studio One — 36
 - 9.2.1 Configuring Audio Devices — 37
 - 9.2.2 Configuring MIDI Devices — 37
- 9.3 Creating a New Song — 42
 - 9.3.1 Configuring Your Audio I/O — 43
 - 9.3.2 Creating Audio and Instrument Tracks — 44
 - 9.3.3 Recording an Audio Track — 45
 - 9.3.4 Adding Virtual Instruments and Effects — 46

10 Appendix — 48

- 10.1 Operation Modes — 48
- 10.2 ioSTATION24c Multichannel Controller MIDI Protocol — 48
 - 10.2.1 SysEx — 48
 - 10.2.2 Fader — 49
 - 10.2.3 Session Navigator Encoder — 49
 - 10.2.4 Buttons and LEDs — 49

1 Overview

1.1 Introduction



Thank you for purchasing the PreSonus® ioSTATION24c audio interface and production controller.

Featuring a 2-in, 2-out USB-C™ compatible audio interface and ultra-smooth, touch-sensitive, motorized fader; complete automation and transport controls; and the unique Session Navigator, the ioSTATION24c is your all-in-one recording and mixing assistant—making tracking and mixing in your favorite DAW application quick and easy.

Loaded with high-headroom, Class A XMAX microphone preamplifiers; robust metering, high-definition 24-bit, 192 kHz conversion; and more, the ioSTATION24c breaks new boundaries for music performance and production. All you need is a computer with a USB C, 2.0, or 3.0 connection, a few microphones and cables, powered speakers, and your instruments, and you are ready to record!

PreSonus Audio Electronics is committed to constant product improvement, and we highly value your suggestions. We believe the best way to achieve our goal of constant product improvement is by listening to the real experts: our valued customers. We appreciate the support you have shown us through the purchase of this product and are confident that you will enjoy your ioSTATION24c!

About this manual: We suggest that you use this manual to familiarize yourself with the features, applications, and correct connection procedures for your ioSTATION24c before trying to connect it to your computer. This will help you avoid problems during installation and setup.

This manual describes the ioSTATION24c behavior in the DAWs for which each operation mode was designed. **Please see Section 10.1 for applications not listed in the Table of Contents.**

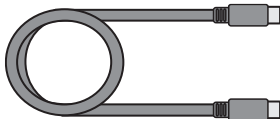
Throughout this manual, you will find **Power User Tips** that can quickly make you an ioSTATION24c expert and help you get the most out of your investment.

1.2 What's in the Box?

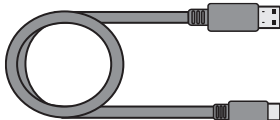
Your ioSTATION24c package contains the following:
ioSTATION24c audio interface/production controller



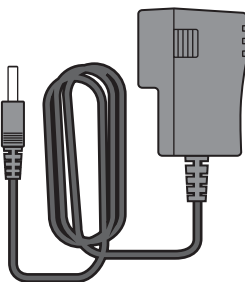
Quick Start Guide



1m USB C cable



6' (1m) USB A-C cable



External Power Supply



PreSonus Health, Safety, and Compliance Guide

1.3 What's in your My PreSonus Account

Once you register your ioSTATION24c , you will be able to download the following:
Studio One Artist recording software and content



Universal Control (necessary for firmware updates)



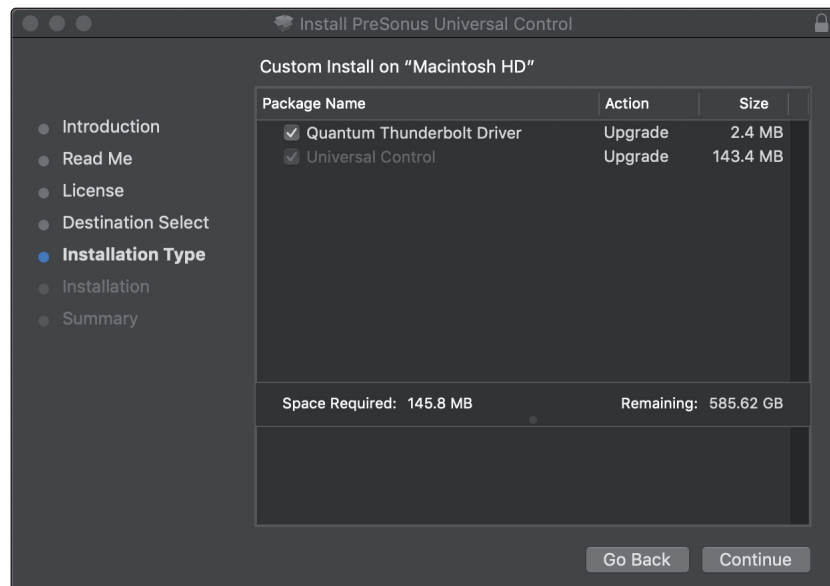
Visit <http://my.presonus.com> to register your ioSTATION24c and download your software and license.

1.4 Firmware Updates

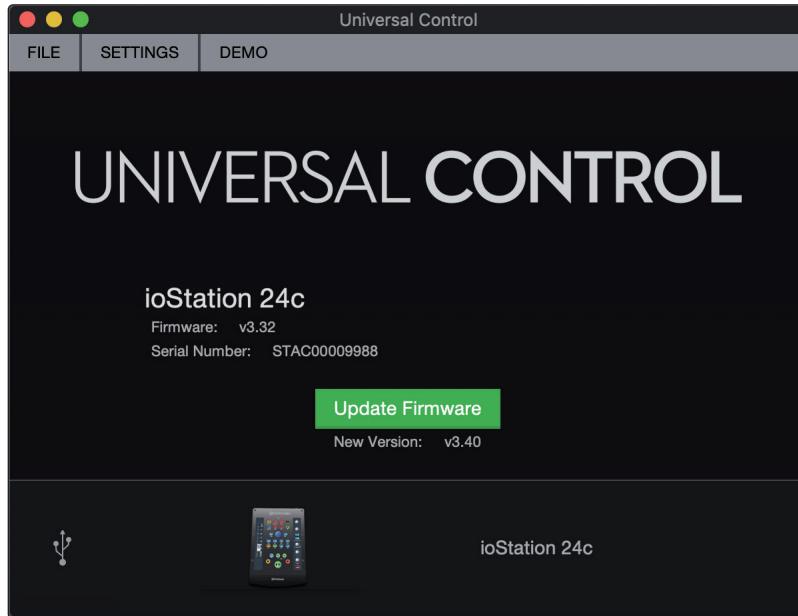
PreSonus is committed to constant product improvement. As part of this commitment, we offer periodic firmware updates that add features, improve functionality, and resolve issues that are discovered in the field. Because of this, it is highly recommended that you download Universal Control from your My PreSonus account after registering your ioSTATION24c.

Note: At the time of this manual's publication, a firmware update is required for full functionality of your ioSTATION24c. You must download and install Universal Control and run the firmware update on your unit.

During installation, you will be given the option to install various PreSonus audio drivers. No driver installation is required for macOS. Windows users must install the ioSTATION24c audio driver.



Once installed, connect your ioSTATION24c to your computer.



Universal Control will alert you if there is new firmware available for your ioSTATION24c. Clicking on the Update Firmware button will begin the update process. This process can take up to five minutes. At the end of the firmware update, you will be prompted to reboot your ioSTATION24c.

Once rebooted, your ioSTATION24c fader may require recalibration. This is an automated process. Do not interfere with or interrupt the fader calibration process.

Note: *One of the Operating Modes must be selected to perform a firmware update.*

2 Hookup

2.1 Back Panel Connections



Mic/Ins/Line inputs Your ioSTATION24c interface is equipped with high-quality XMAX microphone preamplifiers for use with all types of microphones.

Both input channels on your ioSTATION24c interface are equipped with combo jacks. This convenient connector accepts:

- a ¼-inch line-level phone plug (for synthesizers, signal processors, etc.)
- a ¼ passive instrument cable (for guitar, bass, etc.),
- or an XLR plug.

Please note: As with any audio input device, plugging in a microphone or an instrument, or turning phantom power on or off, will create a momentary spike in the audio output. Because of this, we highly recommend that you turn down the channel trim before changing connections or turning phantom power on or off. This simple step will add years to the life of your audio equipment.



Headphone Output. The rear-panel headphone output mirrors the same streams as the Main left/right outputs.



Main Outs. These are the Main outputs for the ioSTATION24c. The output level of the Main outputs is controlled by the Main level control on the front of the unit. Playback streams 1 and 2 are routed to these outputs.



USB C Port. Use this port to connect your ioSTATION24c to your computer. While the ioSTATION24c connects using USB C, it is fully compatible with USB 2.0 and 3.0 connections. Use the USB C to A cable that came with your ioSTATION24c if your computer has a USB 2.0 or 3.0 connection rather than a USB C connection. Do not connect your ioSTATION24c to a USB 1.1 or lower connection on your computer.



Footswitch. Use this port to connect a footswitch to your ioSTATION24c to trigger start/stop or recording punch-ins. The ioSTATION24c will auto-detect the footswitch polarity upon power-up and conform to the footswitch that is connected to it. Either a momentary or a latching switch can be used.

2.2 Top-Panel



Input Gain Controls. These knobs provide 80 dB of variable gain for Mic and Instrument; 40 dB of range for Line (-20 to +20)

Clip Indicators. The red Clip LED will illuminate when your input signal reaches -0.5 dBFS. At this level, the signal will begin to overload the analog-to-digital converters and exhibit signs of clipping. Use the gain controls to keep the signal below this level.



Line. Use the Line switch to toggle between instrument-level and line-level sources. It will light up blue when selected; light off indicates high-impedance instrument-level compatibility.



48V The ioSTATION24c provides 48V phantom power for the microphone inputs. Pressing the 48V button switches phantom power on and off for all microphone inputs; the button will illuminate in blue when phantom power is available on the microphone preamplifiers.



WARNING: Phantom power is only required for condenser microphones and can severely damage some dynamic mics, especially ribbon mics. Therefore, switch phantom power off when it is not required. Consult the user documentation that came with your microphone before engaging phantom power.

XLR connector wiring for phantom power:

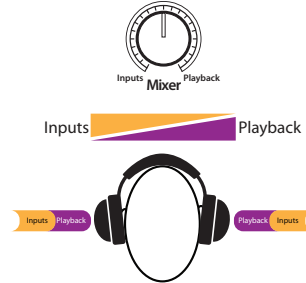
Pin 1 = GND Pin 2 = +48V Pin 3 = +48V



Sync LED. This light indicates if your ioSTATION24c is in sync with your computer. When no sync is available, this light will flash red.



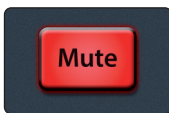
Mix. The Mix knob allows you to blend your input signals with the playback streams from your computer so that you can monitor your input signals without any latency (delay). If the knob is positioned at 12 o'clock, the input signal and the playback stream will be equally balanced. Turning the knob to the left will increase the level of the input signal relative to the playback stream; turning to the right will increase the level of the playback stream relative to the input signal as illustrated below:



Headphone Level. This knob controls the level of the rear panel headphone output.

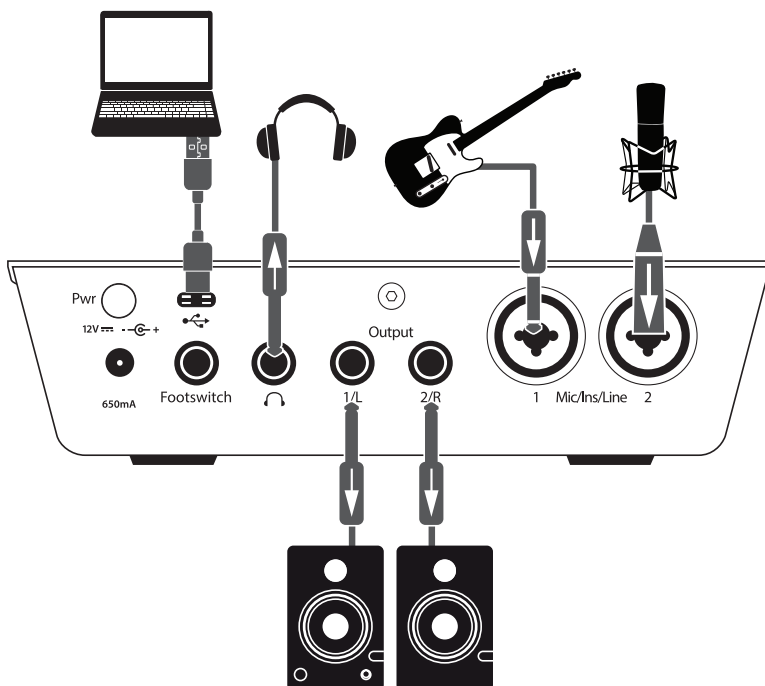


Main. The main knob controls the output level for the main left/right outputs on the back of your ioSTATION24c and has a range of -80 dB to 0 dB. This control provides attenuation only.



Mute. This button mutes the Main Outputs. The headphone output is unaffected by this mute switch.

2.3 Connection Diagram



3 Connecting to a Computer

Before connecting your ioSTATION24c to a computer, **please visit www.presonus.com to verify the latest system requirements.**

Note: The speed of your processor, amount of RAM, and capacity, size, and speed of your hard drives will greatly affect the overall performance of your recording system. A faster processor and more RAM can reduce signal latency (delay) and improve overall performance.

The Windows ASIO driver, and Universal Control installer for macOS and Windows are available for download from your MyPreSonus user account. To begin, you must first visit <http://my.presonus.com>, create or log into your user account, and register your ioSTATION24c. Once registered, all software downloads will be available from within your MyPreSonus user account.

3.1 Installation for Windows

Download the Universal Control installer from your MyPreSonus account. Connect your ioSTATION24c to an available USB C, 2.0, or 3.0 port and launch the installer. The installer will take you through each step of the installation process. This application will install the ASIO and WDM drivers, as well as Universal Control. Please read each message carefully.

It is recommended that you quit all applications before you start the installation.

The Universal Control installer will take you through each step of the installation process. Please read each message carefully so that you do not connect your ioSTATION24c too soon.

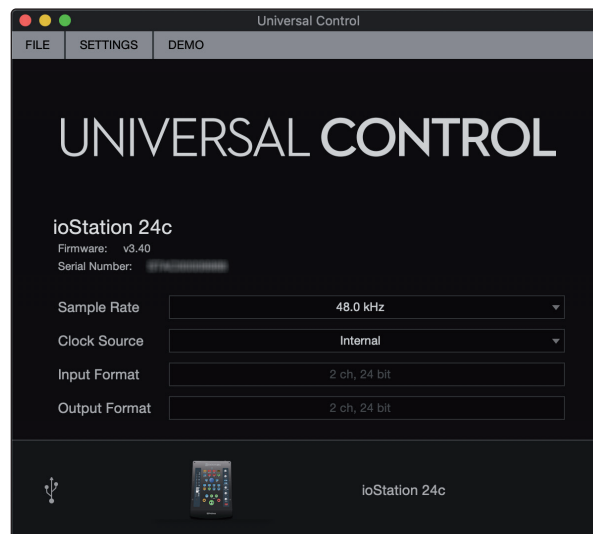
Power User Tip: It is recommended that you temporarily disable or turn off any anti-virus programs you have running to prevent installation issues.

3.1.1 Universal Control (Windows)



Universal Control is a powerful hardware-management application for all PreSonus interface products. It allows you to view any PreSonus interface product connected to your computer or your computer's network.

When Universal Control is launched, you will see the Launch window. From this window, you can manage all the ASIO driver settings.



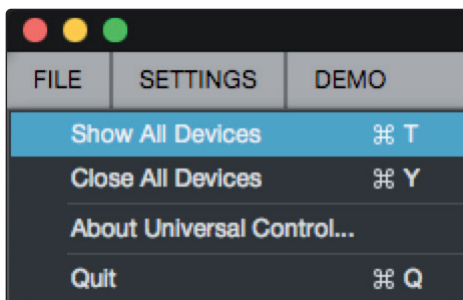
Sample Rate. Changes the sample rate.

You can set the sample rate to 44.1, 48, 88.2, 96, 176.4, or 192 kHz. A higher sample rate will increase the fidelity of the recording but will increase the file size and the amount of system resources necessary to process the audio.

Block Size. Sets the buffer size.

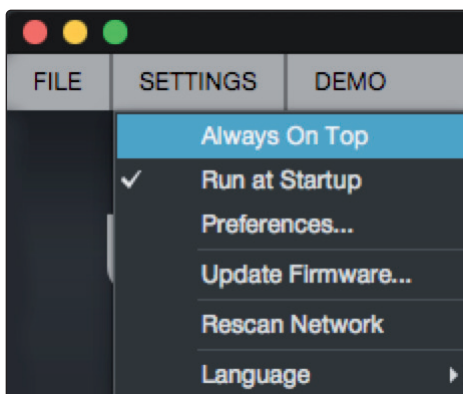
From this menu, you can set the buffer size. Lowering the buffer size will lower latency; however, this will also increase performance demands on your computer. In general, you will want to set the buffer size as low as your system can safely support. If you begin to hear pops, clicks, or distortion in your audio path, try raising the buffer size.

Loopback (Windows only). The ioSTATION24c ASIO driver provides two loopback streams to record audio from one application to another. *See Section 3.1.2 for more information.*



File Menu. Manages devices connected to Universal Control.

- **Show All Devices.** Launches all control windows for all supported devices connected to your computer.
- **Close All Devices.** Closes all open control windows.
- **About Universal Control.** Displays version and build date information.
- **Quit.** Quits the Universal Control application and all hardware control windows.



Settings Menu. Provide customization options to personalize your Universal Control experience.

- **Always on Top.** Keeps the Universal Control Launch window on top whether it is the currently active application or not.
- **Run at Startup.** Launches Universal Control automatically when your computer boots.
- **Preferences.** Sets language and appearance options (see below).
- **Rescan Network.** Scans the network and local transport bus (USB or FireWire) for all supported PreSonus products.
- **Language.** Sets the language (English, French, German, Korean, Simplified Chinese, or Spanish).

3.1.2 Loopback Recording (Windows only)

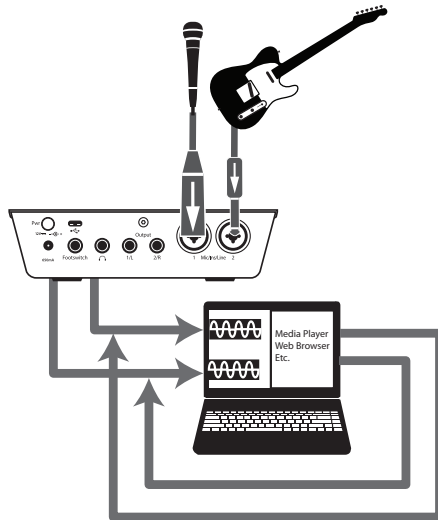
The Windows drivers for the ioSTATION24c provides two virtual streams that allow you to record the output of one audio application in another application. Loopback can be useful in a variety of situations:

- Recording the audio from a video game or YouTube video for a podcast or livestream.
- Recording a vocal in real time over a karaoke track played from a web browser or media player.

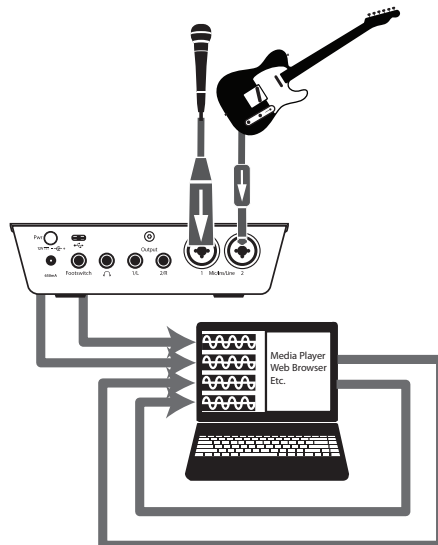
Power User Tip: Because the ioSTATION24c is a class compliant Core Audio device, these virtual streams are not available in macOS. However, there are several third-party applications that provide this functionality in macOS.

From Universal Control, you can enable or disable Loopback and pick the streams on which the loopback audio will be recorded.

When Loopback is enabled in Universal Control and "Mix 1/2" is selected, the audio from another application will be recorded with the audio source connected to analog inputs 1 and 2 on your ioSTATION24c.



When Loopback is enabled and "Virtual" is selected in Universal Control the audio from another application will be recorded on the last pair of driver inputs (3/4).



3.2 Installation for macOS

Your ioSTATION24c is a class-compliant Core Audio device in macOS. No driver installation is necessary.

3.3 Using the ioSTATION24c with Popular Audio Applications

Complete setup instructions for Studio One Artist and a brief tutorial on its features can be found in Section 9 of this manual. However, you can use your ioSTATION24c with any audio-recording application that supports Core Audio or ASIO. Please consult the documentation that came with your audio application for specific instructions on how to select the ioSTATION24c driver as the audio-device driver for your software.

Below are basic driver-setup instructions for a few popular audio applications.

Steinberg Cubase 4+

1. Launch Cubase.
2. Go to Devices | Device Setup.
3. Select "VST Audio System" from the Devices column in the Device Setup.
4. Select your ioSTATION24c from the ASIO Driver dropdown list.
5. Click "Switch" to begin using the Studio-series Driver.
6. Once you have successfully changed the driver, go to Devices | VST Connections to enable your input and output buses.

Ableton Live 5+

1. Launch Ableton Live.
2. Go to Options | Preferences | Audio.
3. Choose Driver Type: ASIO | Audio Device: ASIO ioSTATION24c
4. Go to Input Config: Enable and select the desired Input channels.
5. Go to Output Config: Enable and select the desired Output channels.
6. You may now select your ioSTATION24c inputs and outputs for each track created in Live.

Apple Logic Pro/Express 7+:

1. Launch Logic Pro/Express.
2. Go to Logic | Preferences | Audio.
3. Click on the Devices Tab.
4. On the Core Audio tab, check Enabled.
5. Select your ioSTATION24c from the device menu.
6. You will be asked if you'd like to relaunch Logic. Click "try (re)launch."
7. Your ioSTATION24c features custom I/O labels for faster work flow. To enable these labels for use in Logic, go to Options | Audio | I/O Labels.
8. The second column in the pop-up window will be named "Provided by Driver." Activate each of these labels for your ioSTATION24c. When you are done, close this window.
9. You are now ready to use your ioSTATION24c.

Avid Pro Tools 9+

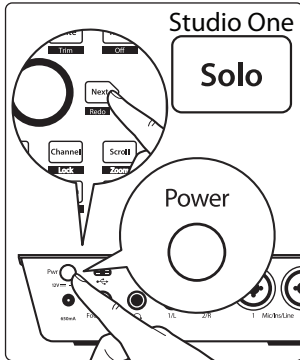
1. Launch Pro Tools.
2. Go to Setup | Hardware and select your ioSTATION24c from the Peripherals list. Click OK.
3. Go to Setup | Playback Engine and select your ioSTATION24c from the menu at the top of the window. Click OK.

Cakewalk by Bandlab

1. Launch Cakewalk by Bandlab.
2. Go to Edit | Preferences
3. In the Devices tab, uncheck the output driver for the Generic Low Latency Driver. This is usually on by default, and will not let you check anything unless it's unchecked.
4. Check all the ioSTATION24c input and output driver boxes
5. Click the "Apply" and "OK" buttons.
6. Click the Driver Settings tab
7. Set the Playback Timing Master to: "ioSTATION24c Main Out Left"
8. Set the Record Timing Master to: "ioSTATION24c Main Out Right"
9. Click the "Apply" and "OK" buttons.

4 Studio One

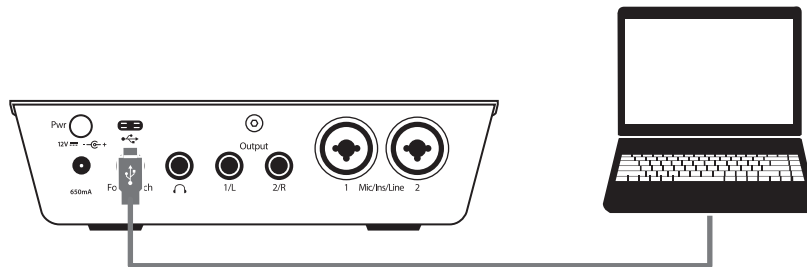
4.1 Getting Started



By default, your ioSTATION24c is configured for Studio One. No further device setup is required.

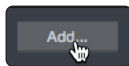
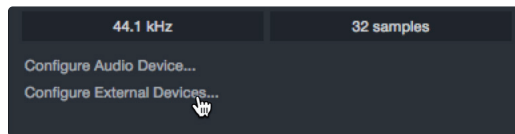
If you have changed the ioStation's Operation Mode and would like to return to using it with Studio One, press and hold the NEXT button while powering on, then press the Solo button to enable Studio One.

Note: In addition to Studio One, this operation mode should be used with other DAWs that provide native ioSTATION24c support. A complete list of native-support DAW applications is available at www.presonus.com.

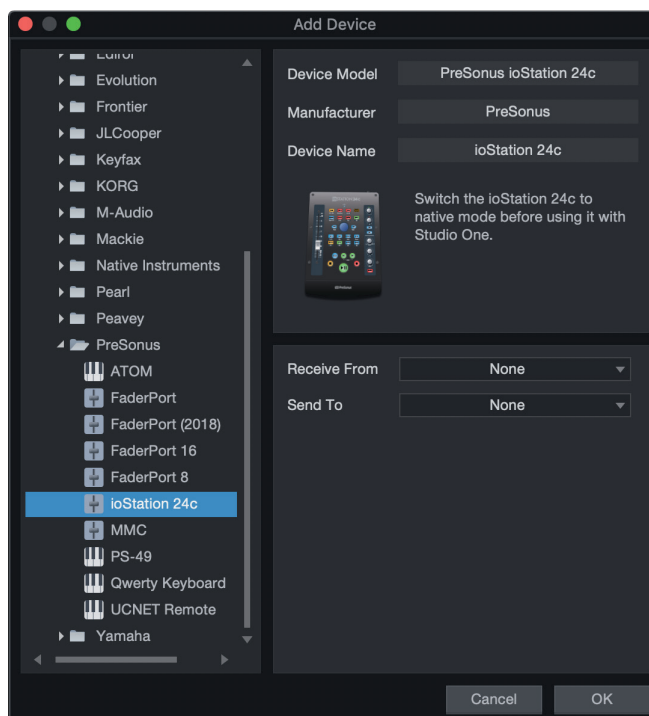


Studio One will autoconfigure when an ioSTATION24c is recognized. In the event this does not occur, please use the following instructions to configure your ioSTATION24c as a controller:

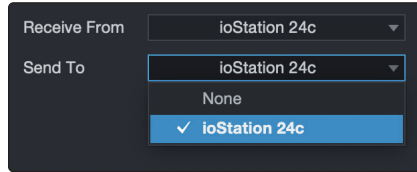
1. From the Start page, click on the Configure External Devices link.



2. Click the Add button.
3. From the manufacturers list at the left, click on PreSonus and then select ioSTATION24c.

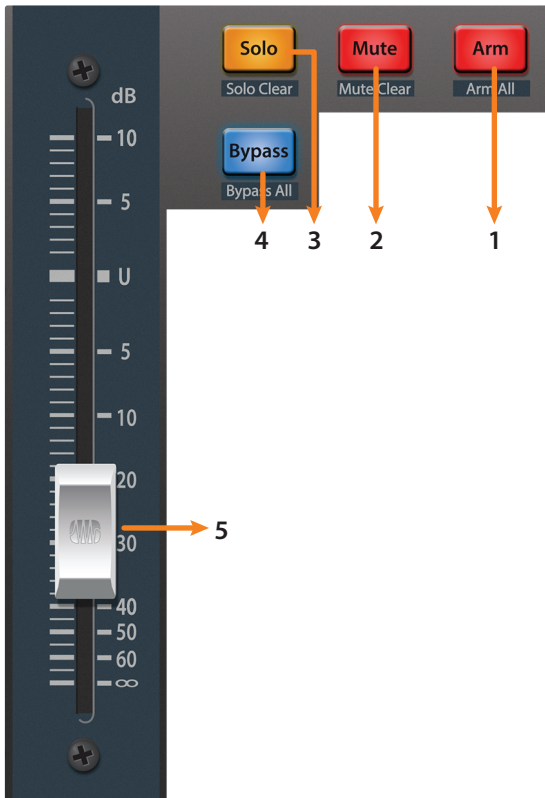


Set the Send To and Receive From fields to "ioSTATION24c"



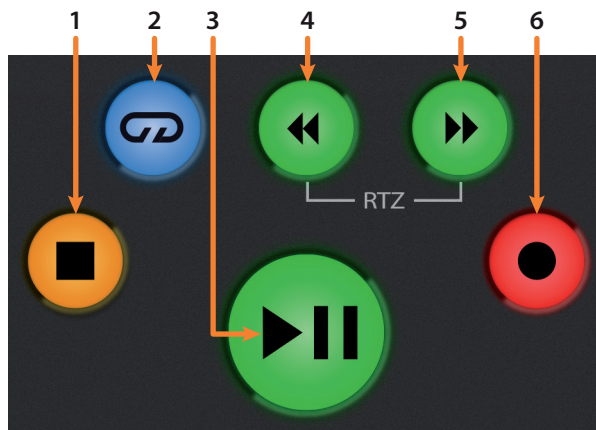
Your ioSTATION24c is now ready for use.

4.2 Channel Strip



1. **Arm.** Pressing the Arm button will allow you to arm track for recording the currently selected track in Studio One. Press with SHIFT to arm all tracks for recording.
2. **Mute.** Mutes the corresponding channel's output signal. Press and hold to mute momentarily. Press with SHIFT for Mute Clear.
3. **Solo.** Isolates the corresponding channel's output signal in the mix. Press and hold to solo momentarily. Press with SHIFT for Solo Clear.
4. **Bypass / Bypass All.** Press the Bypass button to bypass every plug-in on the selected channel. Press SHIFT + Bypass to disable every plug-in in the Session.
5. **Touch-Sensitive Fader.** This 100 mm motorized fader can be used to control volume levels and panning in Pan Flip mode. *See Section 4.4 for details.*

4.3 Transport Controls



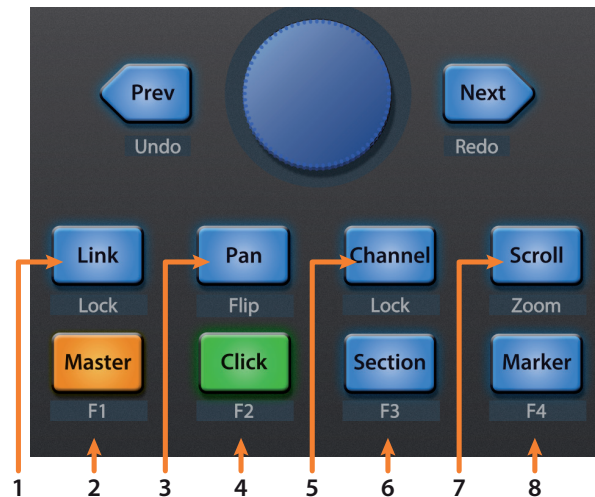
1. **Stop.** Stops playback. Press twice to return playback-cursor to zero.
2. **Loop.** Engages / disengages Looping.
3. **Play / Pause.** Starts playback at the current playback-cursor position. Press again to pause playback.
4. **Rewind.** Press and hold for continuous rewind. Press the Rewind and Fast Forward buttons simultaneously to Return to Zero.

5. **Fast Forward.** Press and hold for continuous fast forward.
6. **Record.** Press to start recording at the current playback-cursor position for record-enabled tracks.

4.4 The Session Navigator

The Session Navigator provides quick navigation and session controls. Each button alters the functions of the push-button encoder and the Next and Prev buttons on either side.

Pressing SHIFT + Prev will Undo the last action. Pressing SHIFT + Next will Redo the last action.



Link. Encoder controls any parameter beneath your mouse. Navigation buttons select Next and Previous tracks respectively. To lock a parameter to this encoder, press SHIFT + Link.



Power User Tip: The Channel Editor is a powerful feature in Studio One Professional that allows you to map multiple parameters to the same control, with independent range/polarity/curve controls. Additional XY vector pads can be assigned with individual parameters; and much more.

1. **Master.** Encoder controls the Master level. Push the Encoder to reset the Master level to 0 dB. While in this mode, the navigation buttons will control banking. Press SHIFT + Master to enable F1 User function. **See Section 4.4.1 for details.**
2. **Pan.** Encoder controls panning. Navigation buttons scroll through track list. Push the Encoder to reset the level to 0 dB. Press SHIFT + Pan to use the fader to control panning.
3. **Click.** Turns the metronome on/off. The metronome can be engaged or disengaged while any mode is active. Press SHIFT + Click to enable F2 User function. **See Section 4.4.1 for details.**
4. **Channel.** Encoder controls individual channel scrolling. Navigation buttons adjust the currently visible fader on the ioSTATION24c by one channel. Press SHIFT + Channel to lock the channel controls to the currently selected track.
Note: Channel Lock is only available in Studio One v4 and higher.
5. **Section.** Encoder nudges the selected event. Use the navigation buttons to navigate through the events on the Arranger track. Press SHIFT + Section to enable F3 User function. **See Section 4.4.1 for details.**

Power User Tip: Enable Snap to Grid for coarse nudging. Disable it for fine tuning.



6. **Scroll / Zoom.** Encoder controls timeline scrolling. Push the encoder to fit the timeline to the window size. Use the navigation buttons to scroll through the track list. Press SHIFT + Scroll to enable Zooming. While Zoom is active, encoder controls horizontal zooming. Navigation buttons control vertical zooming. Press the encoder to undo zooming in both directions.
7. **Marker.** Encoder moves the playback cursor in the Timeline. Use the navigation buttons to scroll through markers. Press Encoder to drop a marker. Press SHIFT + Marker to enable F4 User function. *See Section 4.4.1 for details.*

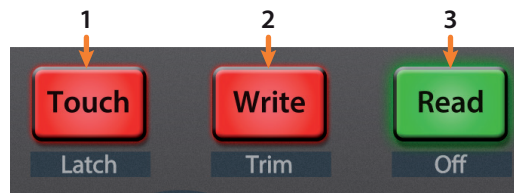
4.4.1 F1-F4 Functions

Using Shift plus the lower four Session Navigator button will access alternate functions for your ioSTATION24c. By default, these are assigned as follows:

- **F1.** Open Inspector
- **F2.** Open Editor
- **F3.** Open Mixer
- **F4.** Open Browser

Power User Tip: The default assignments for the Function buttons can be customized using the ioSTATION24c device editor. *See Section 4.6 for more information.*

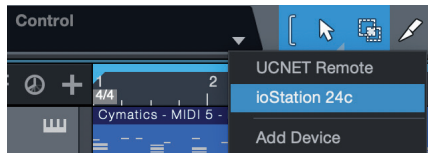
4.5 Automation Controls



1. **Touch / Latch.** Engages Touch Automation on the currently selected track. Press the SHIFT and Touch buttons simultaneously to engage Latch Automation on the currently selected track.
2. **Write / Trim.** Engages Write Automation on the currently selected track. At the time of publication, Trim Automation is not available in Studio One.
3. **Read / Off.** Engages Read Automation on the currently selected track. Press the SHIFT and Read buttons simultaneously to turn automation off on the selected channel.

4.6 Control Link

Click on the pull-down menu in the Control Link display to launch the ioSTATION24c editor window.

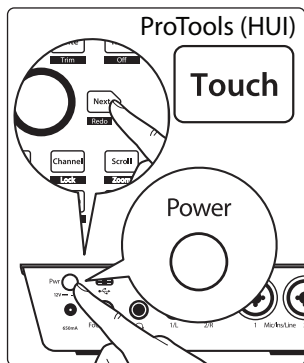


Right-click on any ioSTATION24ccontrol and select "Assign Command" to customize your ioSTATION24c.

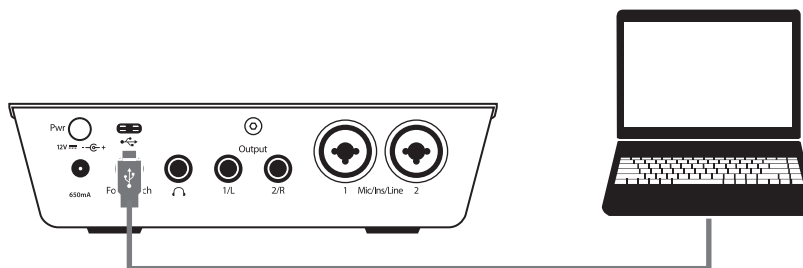


5 Pro Tools (HUI)

5.1 Getting Started

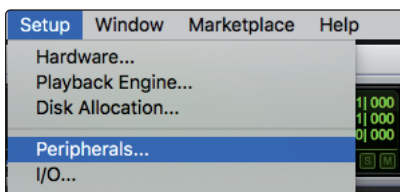


By default, the ioSTATION24c is in Studio One operation mode. To switch to Pro Tools operation, press and hold the NEXT button while powering on your ioSTATION24c, then press the Touch button to enable Pro Tools (HUI) operation.

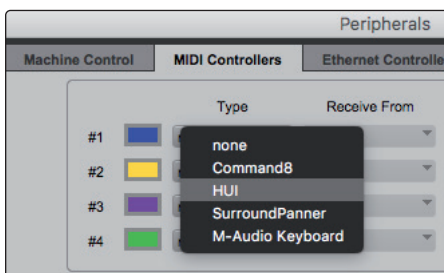


Once you have connected your ioSTATION24c to your computer, launch Pro Tools to set up the ioSTATION24c as a HUI device.

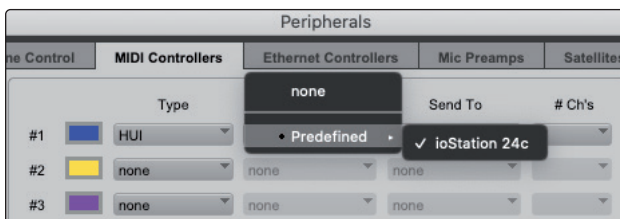
1. Go to Setup | Peripherals.



2. Create one HUI device under MIDI Controllers.



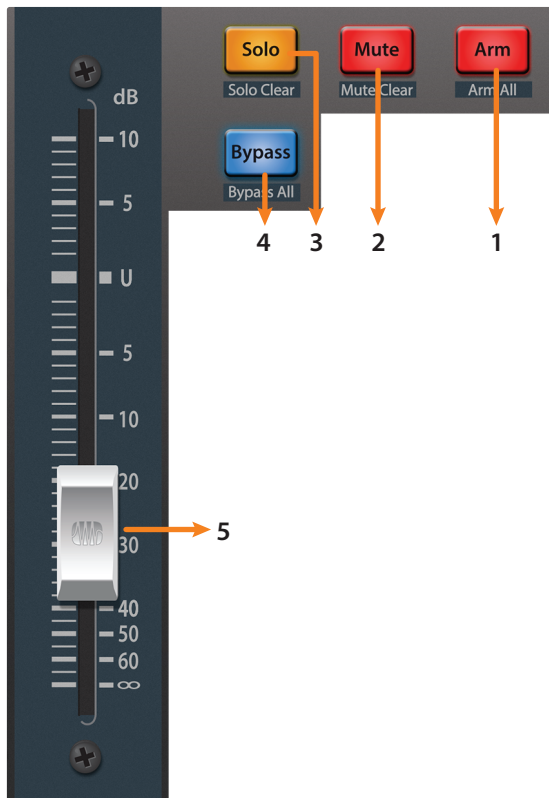
3. Set the Receive From and Send To menus to "ioSTATION24c" and #Ch's to 8.



Click "OK."

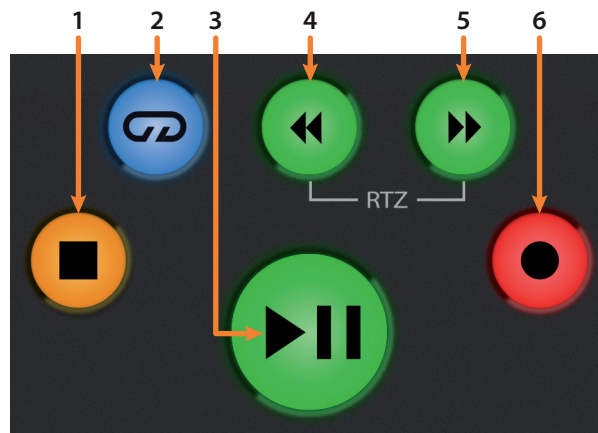
Your ioSTATION24c is now ready to use. Enjoy!

5.2 Channel Strip



1. **Arm.** Pressing the Arm button will allow you to arm the currently selected track for recording. Press with SHIFT to arm all tracks for recording.
2. **Mute.** Mutes the corresponding channel's output signal. Press with SHIFT to clear mutes on the active bank.
3. **Solo.** Isolates the corresponding channel's output signal in the mix. Press with SHIFT clear solos on the active bank.
4. **Bypass / Bypass All.** At the time of publication, this button has no functionality in Pro Tools.
5. **Touch-Sensitive Fader.** This 100 mm motorized fader can be used to control volume levels and panning in Pan Flip mode. *See Section 5.4 for details.*

5.3 Transport Controls

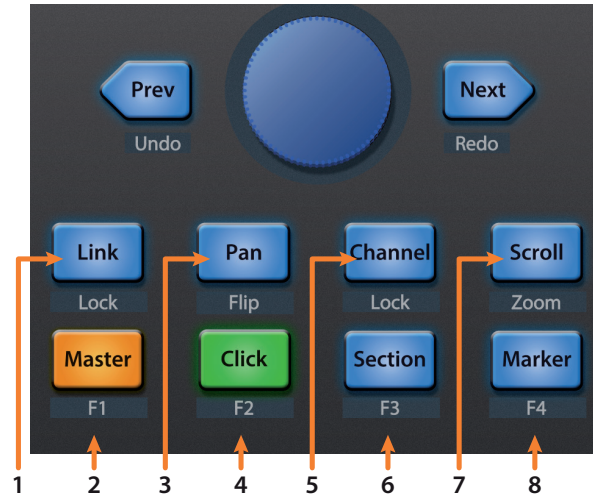


1. **Stop.** Stops playback.
2. **Loop.** Engages / disengages Looping.
3. **Play / Pause.** Starts playback at the current playback-cursor position.
4. **Rewind.** Press once to regress playback by bar, second, frame, or base sample rate depending on mode. Press and hold to regress in finer increments. Press the Rewind and Fast Forward buttons simultaneously to Return to Zero.
5. **Fast Forward.** Press once to advance playback by bar, second, frame, or base sample rate depending on mode. Press and hold to advance in finer increments.
6. **Record.** Press to enable record ready. Press with Play to start recording at the current playback-cursor position for record-enabled tracks.

5.4 The Session Navigator

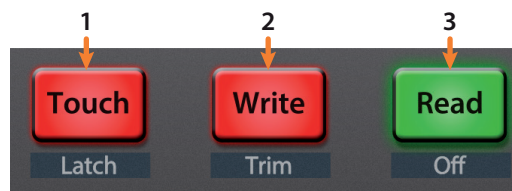
The Session Navigator provides quick navigation and session controls. Each button alters the functions of the push-button encoder and the Next and Prev buttons on either side.

Pressing SHIFT + Prev will Undo the last action. Pressing SHIFT + Next will Redo the last action.



1. **Link.** At the time of publication, this button has no function in Pro Tools.
2. **Master.** This function is not available in HUI mode.
3. **Pan.** Encoder controls panning. Navigation buttons scroll through track list. Press SHIFT + Pan to use the fader to control panning. Pressing the encoder toggles pan control between Left and Right for stereo channels.
4. **Click.** Turns the metronome on/off. The metronome can be engaged or disengaged while any mode is active. *Note: This only functions if a click track has been created for the Pro Tools session.*
5. **Channel.** Encoder and navigation buttons select the previous or next channel. Press SHIFT + Channel to lock the channel controls to the currently selected track.
6. **Section.** This function is not available in HUI mode.
7. **Scroll / Zoom.** Press once to enable audio scrubbing. Press twice to enable faster audio scrubbing. Press Stop or any other Session Navigator button to disengage scrubbing. Press SHIFT + Scroll to enable Zooming. While Zoom is active, encoder and navigation buttons control horizontal zooming.
8. **Marker.** Encoder and navigation buttons scroll through markers 1-9. Press Encoder to drop a marker. Press Shift and Marker to cycle through the tools.

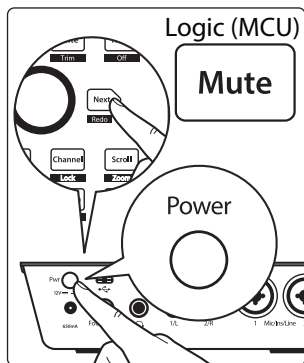
5.5 Automation Controls



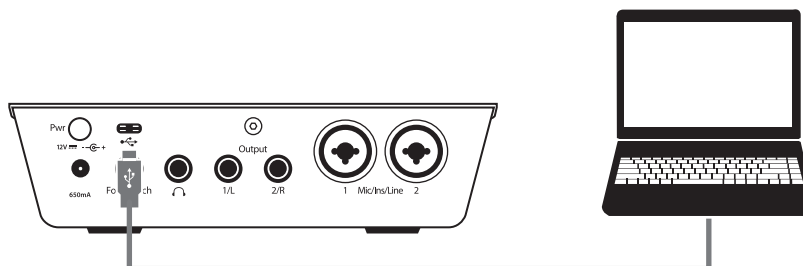
1. **Touch / Latch.** Engages Touch Automation on the currently selected track. Press the SHIFT and Touch buttons simultaneously to engage Latch Automation on the currently selected track.
2. **Write / Trim.** Engages Write Automation on currently selected track. Press the SHIFT and Write buttons simultaneously to engage Trim Automation on the currently selected track.
3. **Read / Off.** Engages Read Automation on the currently selected track. Press the SHIFT and Read buttons simultaneously to undo the last action.

6 Logic (MCU)

6.1 Getting Started

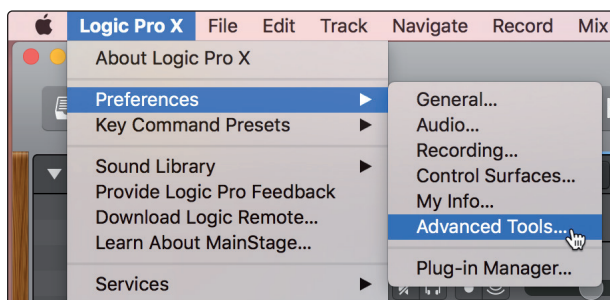


By default, the ioSTATION24c is in Studio One operation mode. To switch to Logic operation, press and hold the NEXT button while powering on your ioSTATION24c, then press the Mute button to enable Logic (MCU) operation.

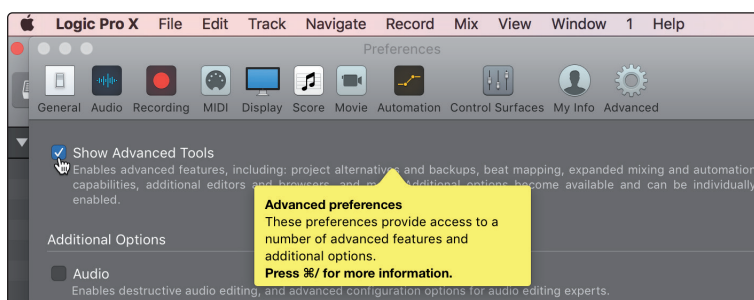


Once you have connected your ioSTATION24c to your computer, launch Logic. The ioSTATION24c will auto-configure as a Mackie Control Universal device. If for some reason this does not happen, you will need to enable it manually.

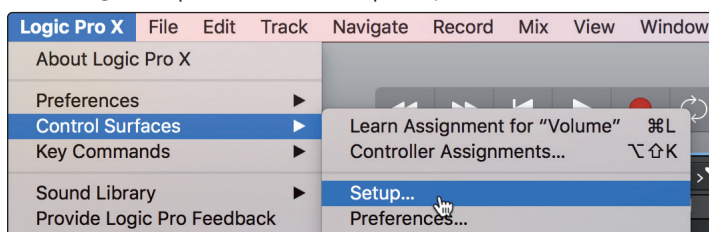
1. If you do not have Advanced preferences enabled, go to Logic Pro | Preferences | Advanced Tools...



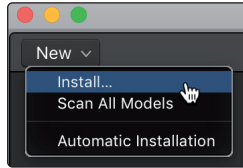
2. Enable "Show Advanced Tools."



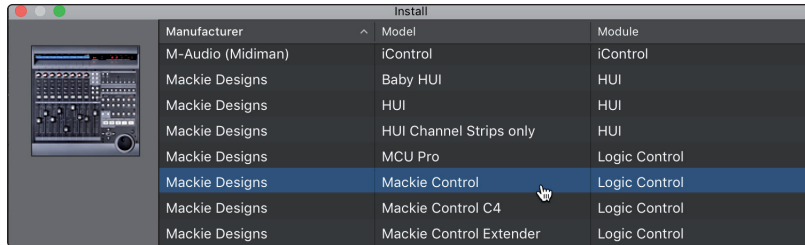
3. Go to Logic Pro | Control Surfaces | Setup...



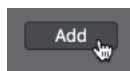
4. In the pop-up menu, go to New | Install...



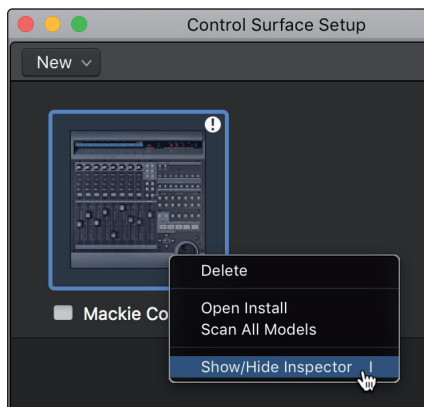
5. From the list of devices, select Mackie Control.



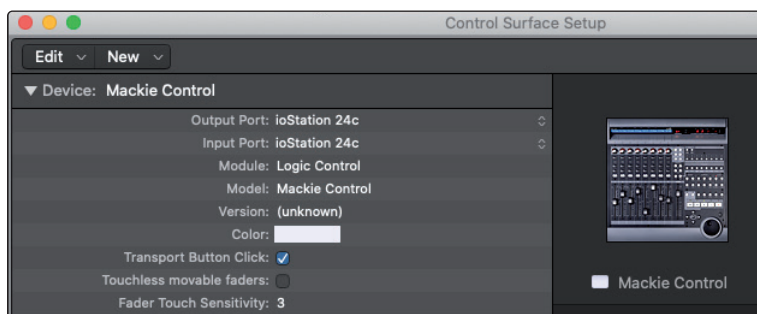
6. Click Add.



7. Right-click on the Mackie Control in the Control Surface Setup and select Show/Hide Inspector.

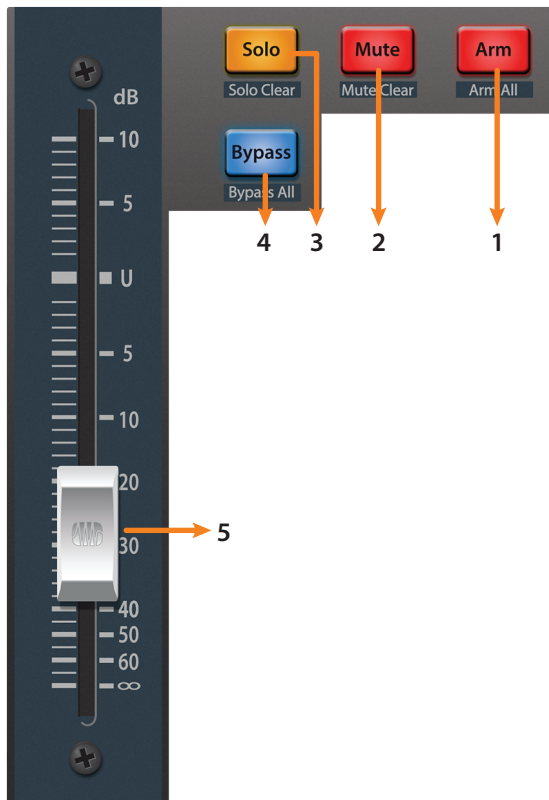


8. In the Inspector, set the Input and Output ports to "ioSTATION24c."



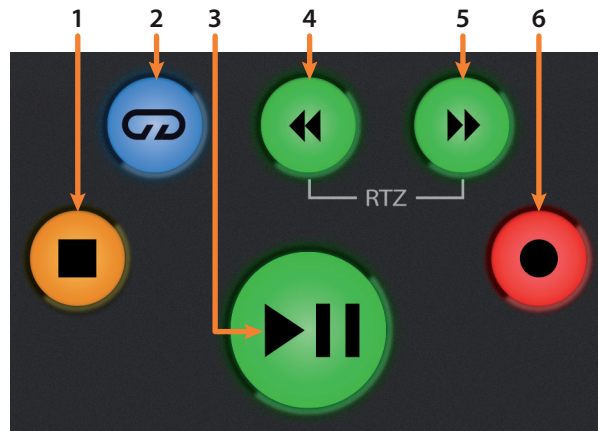
Your ioSTATION24c is now ready to use. Enjoy!

6.2 Channel Strip



1. **Arm.** Pressing the Arm button will allow you to arm the currently selected track for recording. Press with SHIFT to arm all tracks for recording.
2. **Mute.** Mutes the corresponding channel's output signal. Press with SHIFT for Mute Clear.
3. **Solo.** Isolates the corresponding channel's output signal in the mix. Press with SHIFT for Solo Clear.
4. **Bypass / Bypass All.** Press to Show/Hide the Detail View.
5. **Touch-Sensitive Fader.** This 100 mm motorized fader can be used to control volume levels and panning in Pan Flip mode. *See Section 6.4 for details.*

6.3 Transport Controls

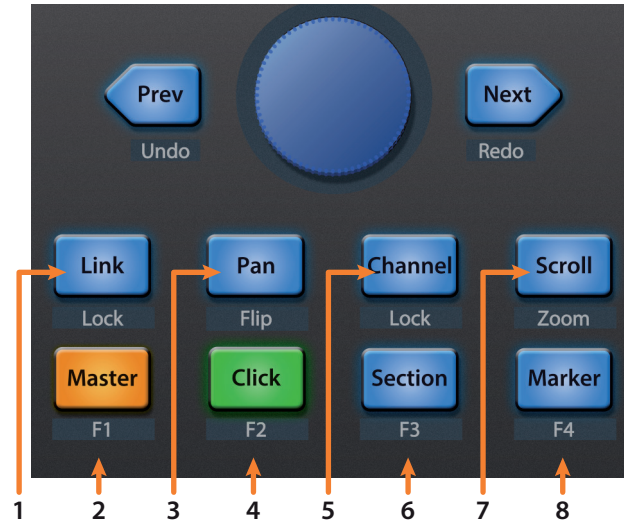


1. **Stop.** Stops playback. Press again to return to zero.
2. **Loop.** Engages / disengages cycle/loop playback.
Press and hold the Loop and Rewind button simultaneously to set the cycle start point at the current timeline position.
Press and hold the Loop and Fast Forward buttons simultaneously to set the cycle end point at the current timeline position.
3. **Play / Pause.** Starts playback at the current playback-cursor position. Press again to restart playback at the previous play position. Hold the Shift button and press Play to Pause playback.
4. **Rewind.** Press and hold to move the cursor backward through the timeline.
5. **Fast Forward.** Press and hold to move the cursor forwards through the timeline. Repeated pressing will accelerate speed.
6. **Record.** Starts recording at the current playback-cursor position for record-enabled tracks.

6.4 The Session Navigator

The Session Navigator provides quick navigation and session controls. Each button alters the functions of the push-button encoder and the Next and Prev buttons on either side.

Pressing SHIFT + Prev will Undo the last action. Pressing SHIFT + Next will Redo the last action.



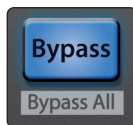
1. **Link.** Press to return to Arrangement.
2. **Master.** Encoder controls the Master Level. Navigation buttons control Channel mode. Press SHIFT + Master triggers Logic ScreenSet 1.
3. **Pan.** Encoder controls panning. Navigation buttons scroll through track list. Press SHIFT + Pan to use the fader to control panning. Press the encoder to reset panning to C.
4. **Click.** Engages the Punch-in switch. Press SHIFT + Click triggers Logic ScreenSet 2.
5. **Channel.** Encoder and navigation buttons control individual channel scrolling. Press SHIFT + Channel to lock the channel controls to the currently selected track.
6. **Section.** Engages Punch In switch. Press SHIFT + Section triggers Logic ScreenSet 3.
7. **Scroll / Zoom.** While in Arranger view, the encoder controls horizontal zooming. Navigation buttons control vertical zooming for the currently selected track.
While in Session view, pressing Zoom once will engage clip/scene launch mode. Zoom and Scroll will both light up.
 - Encoder selects the next/previous scene. Navigation buttons select the next/previous track.
 - Press Zoom to launch the currently selected clip.
 - Press Scroll to launch the currently selected scene.
 - Press any other mode to leave clip/scene launch mode.
8. **Marker.** Encoder scrolls through timeline in Arranger view. Use the Navigation button to jump to Next or Prev markers. Logic ScreenSet 4.

6.5 Automation Controls



1. **Touch / Latch.** Engages Touch Automation on the currently selected track. Press the SHIFT and Touch buttons simultaneously to engage Latch Automation on the currently selected track.
2. **Write / Trim.** Engages Write Automation on currently selected track. Press the SHIFT and Write buttons simultaneously to toggle Trim automation when Latch or Touch modes are active.
3. **Read / Off.** Engages Read Automation on the currently selected track. Press the SHIFT and Read buttons simultaneously to undo the last action.

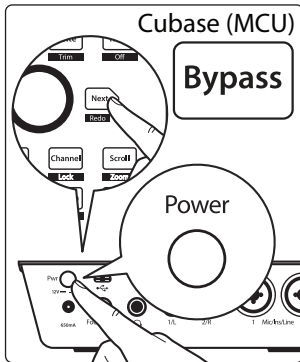
6.6 Bypass



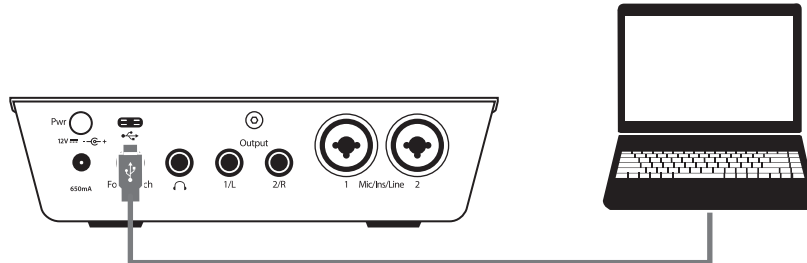
Bypass. Switch faders to control Return tracks.

7 Cubase / Nuendo (MCU)

7.1 Getting Started

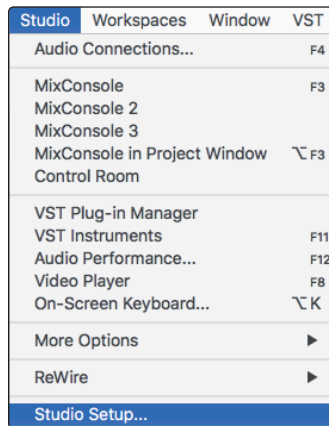


By default, the ioSTATION24c is in Studio One operation mode. To switch to Cubase / Nuendo operation, press and hold the NEXT button while powering on your ioSTATION24c, then press the Bypass button to enable Cubase / Nuendo (MCU) operation.



Once you have connected your ioSTATION24c to your computer, launch Cubase or Nuendo to set up the ioSTATION24c as a Mackie Control Universal device.

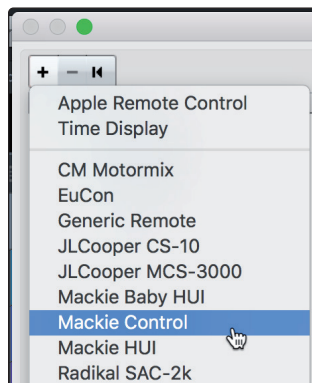
1. Go to Studio | Studio Setup.



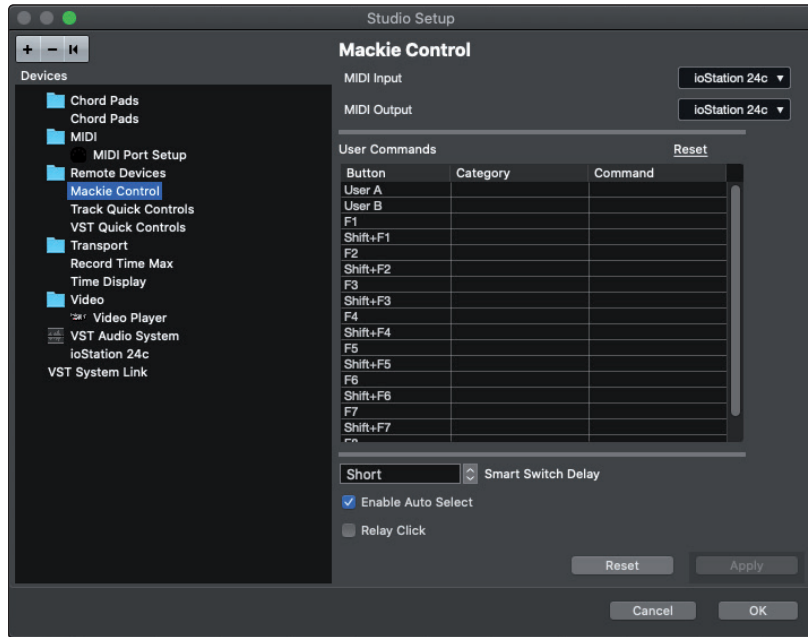
2. In the Setup window, click the "Add/Remove" menu to add the first Mackie Control device.



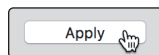
3. Select "Mackie Control" from the pull-down menu.



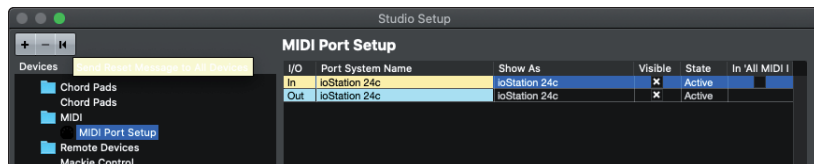
- Set the MIDI Input and Output to "ioSTATION24c."



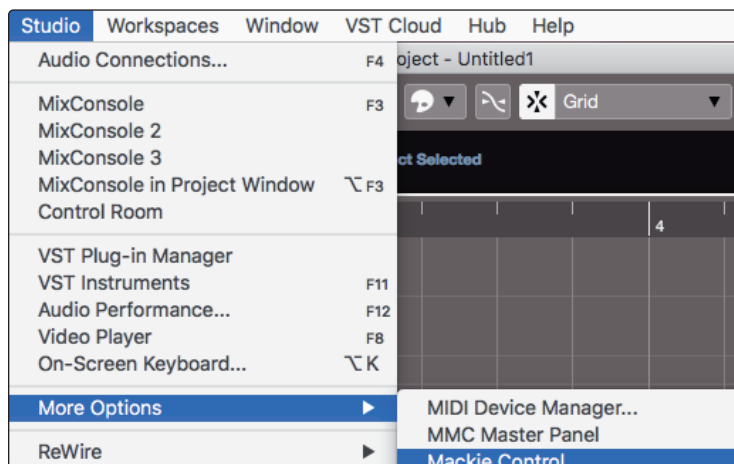
- Click "Apply."



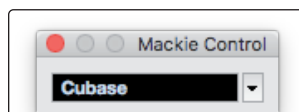
- Select MIDI Port Setup and make sure that "In All MIDI" box is unchecked and then click "OK."



- You will need to switch the Mackie Control device to Compatibility mode. To do this, select the Mackie Control from the Devices menu.

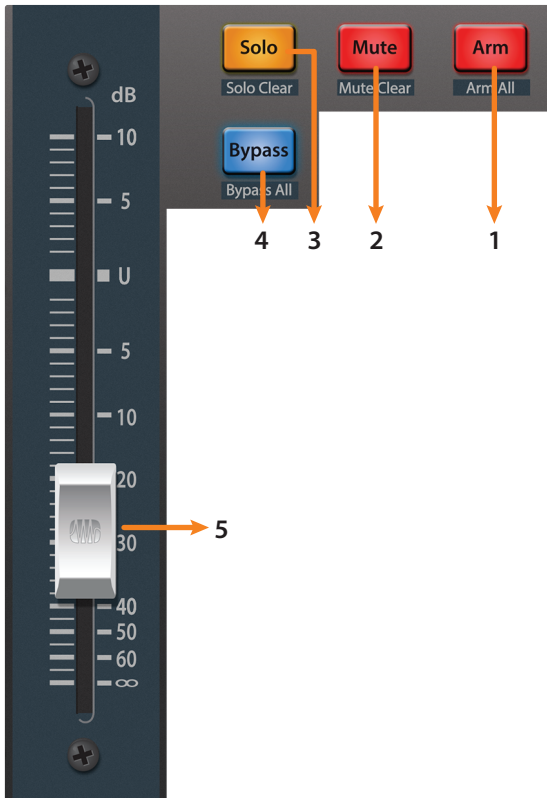


- From the pop-up windows, select Cubase from the menu.



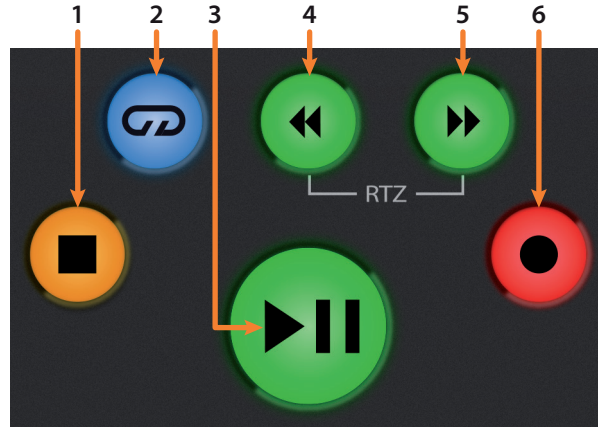
Your ioSTATION24c is now ready to use. Enjoy!

7.2 Channel Strip



1. **Arm.** Pressing the Arm button will allow you to arm the currently selected track for recording. Press with SHIFT to arm all tracks for recording.
2. **Mute.** Mutes the corresponding channel's output signal. Press and hold to mute momentarily. Press with SHIFT for Mute Clear.
3. **Solo.** Isolates the corresponding channel's output signal in the mix. Press and hold to solo momentarily. Press with SHIFT for Solo Clear.
4. **Bypass / Bypass All.** At the time of publication, this button has no function in Cubase or Nuendo.
5. **Touch-Sensitive Fader.** This 100 mm motorized fader can be used to control volume levels and panning in Pan Flip mode. *See Section 7.4 for details.*

7.3 Transport Controls

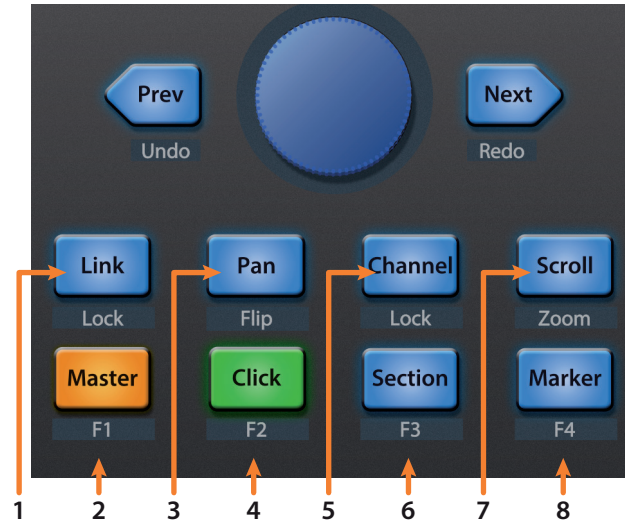


1. **Stop.** Stops playback. Press twice to return to the initial playback position.
2. **Loop.** Engages / disengages Looping.
3. **Play / Pause.** Starts playback at the current playback-cursor position. Pause is not available in Cubase.
4. **Rewind.** Press and hold to move the cursor backward through the timeline. Press the Rewind and Fast Forward buttons simultaneously to Return to Zero.
5. **Fast Forward.** Press and hold to move the cursor forward through the timeline.
6. **Record.** Starts recording at the current playback-cursor position for record-enabled tracks.

7.4 The Session Navigator

The Session Navigator provides quick navigation and session controls. Each button alters the functions of the push-button encoder and the Next and Prev buttons on either side.

Pressing SHIFT + Prev will Undo the last action. Pressing SHIFT + Next will Redo the last action.



1. **Link.** Pressing the Link button toggles the Channel Setting Window. Press SHIFT + Link to bring the Arrangement into focus.
2. **Master.** The Encoder controls the Master bus level. Navigation buttons switch between the left / right panning and front / rear panning. Press SHIFT + Master to open Channel Visibility Configuration 1.
3. **Pan.** Encoder controls panning. Navigation buttons scroll through track list. Press SHIFT + Pan to use the fader to control panning.
4. **Click.** Pressing the Click button toggles the Mixer. Press SHIFT + Click to open Channel Visibility Configuration 2.
5. **Channel.** Encoder scrolls and selects individual channels. Navigation buttons adjust the current bank by one channel. Press SHIFT + Channel to lock the channel controls to the currently selected track.
6. **Section.** Enables scrubbing control with the encoder and navigation buttons. Press SHIFT + Section to open Channel Visibility Configuration 3.
7. **Scroll / Zoom.** Encoder and navigation buttons control timeline scrolling. By default, Scroll mode is set to Coarse tune scrolling, press the Scroll button a second time to engage Fine tune scrolling. Press SHIFT + Scroll to enable Zooming. While Zoom is active, encoder controls horizontal zooming. Navigation buttons control vertical zooming.
8. **Marker.** Encoder and navigation buttons scroll through markers. Press the Encoder to drop a marker. Press SHIFT + Marker to open Channel Visibility Configuration 4.

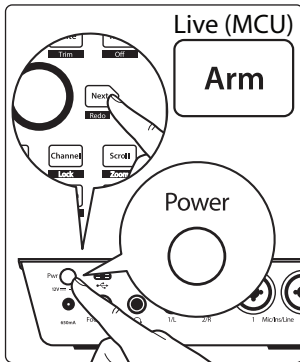
7.5 Automation Controls



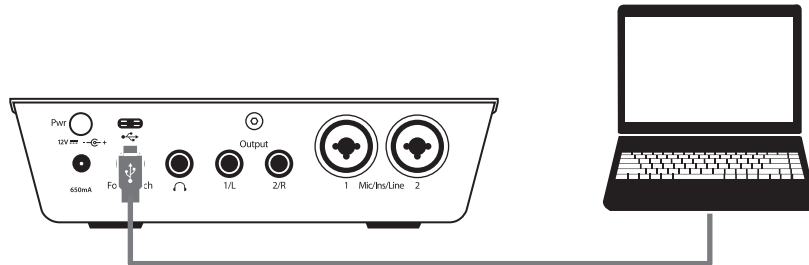
1. **Touch / Latch.** Press Touch to open the dialog prompt in Cubase to revert to the last saved version of your session.
2. **Write / Trim.** Engages Write Automation on the currently selected track.
3. **Read / Off.** Engages Read Automation on the currently selected track. Press again to turn automation off on the currently selected track.

8 Live (MCU)

8.1 Getting Started

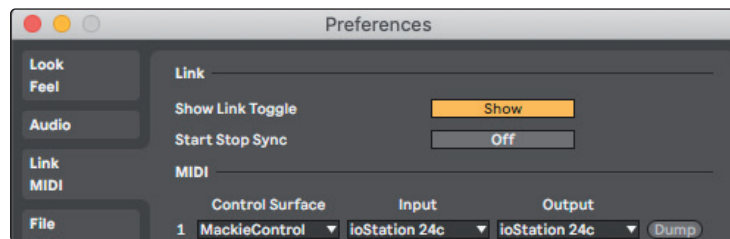


By default, the ioSTATION24c is in Studio One operation mode. To switch to Live operation, press and hold the NEXT button while powering on your ioSTATION24c, then press the Arm button to enable Live (MCU) operation.

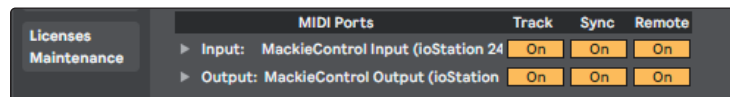


Once you have connected your ioSTATION24c to your computer, launch Live to set up the ioSTATION24c as a Mackie Control Universal device.

1. Go to Live | Preferences
2. Choose the Link MIDI tab and set Control Surface 1 to Mackie Control and the Input and Output to "ioSTATION24c."



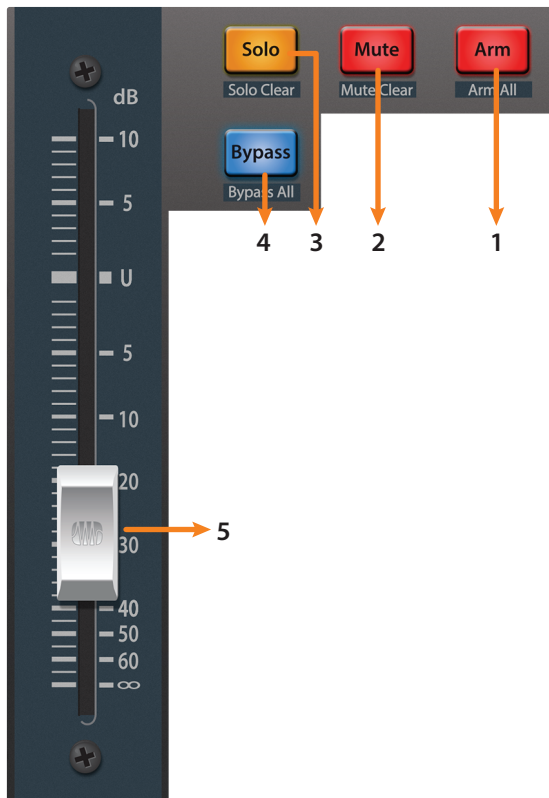
3. Make sure that Track, Sync, and Remote are all enabled for both the Input and the Output of "MackieControl."



4. Select MIDI Port Setup and make sure that "In All MIDI" box is unchecked and then click "OK."

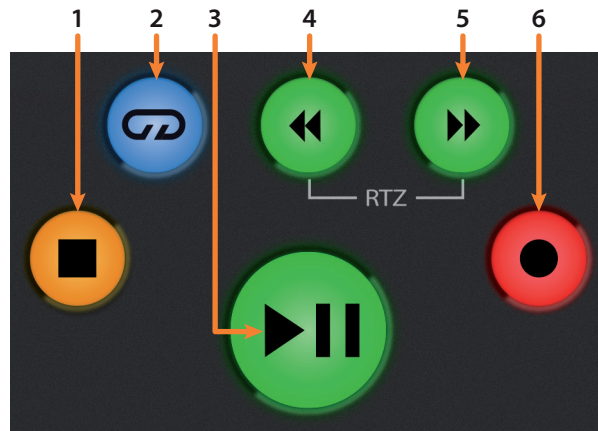
Your ioSTATION24c is now ready to use. Enjoy!

8.2 Channel Strip



1. **Arm.** Pressing the Arm button will allow you to arm the currently selected track. Press with SHIFT to arm the currently focused bank of tracks for recording.
2. **Mute.** Mutes the corresponding channel's output signal. Press with SHIFT to clear all mutes for the currently focused bank.
3. **Solo.** Isolates the corresponding channel's output signal in the mix. Press with SHIFT to clear all solos for the currently focused bank.
4. **Bypass / Bypass All.** Press to Show/Hide the Detail View.
5. **Touch-Sensitive Fader.** This 100 mm motorized fader can be used to control volume levels and panning in Pan Flip mode. *See Section 8.4 for details.*

8.3 Transport Controls

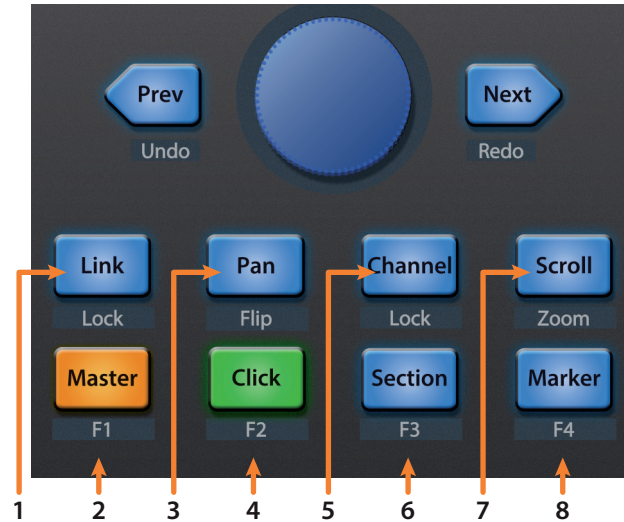


1. **Stop.** Stops playback. Press again to return to zero.
2. **Loop.** Engages / disengages Looping.
3. **Play / Pause.** Starts playback at the current playback-cursor position. Press again to restart playback at the previous play position.
4. **Rewind.** Press and hold to move the cursor backward through the timeline.
5. **Fast Forward.** Press and hold to move the cursor forwards through the timeline.
6. **Record.** Starts recording at the current playback-cursor position for record-enabled tracks.

8.4 The Session Navigator

The Session Navigator provides quick navigation and session controls. Each button alters the functions of the push-button encoder and the Next and Prev buttons on either side.

Pressing SHIFT + Prev will Undo the last action. Pressing SHIFT + Next will Redo the last action.



1. **Link.** Press to return to Arrangement.
2. **Master.** Encoder controls the Master Level. Navigation buttons control Channel mode. Press SHIFT + Master triggers MIDI Note F#2.
3. **Pan.** Encoder controls panning. Navigation buttons scroll through track list. Press SHIFT + Pan to use the fader to control panning. Press the encoder to reset panning to C.
4. **Click.** Engages the Punch-in switch. Press SHIFT + Click triggers MIDI Note G2.
5. **Channel.** Encoder and navigation buttons control individual channel scrolling. Press SHIFT + Channel to lock the channel controls to the currently selected track.
6. **Section.** Encoder nudges the selected event. Use the navigation buttons to navigate through the events on the Arranger track. Press SHIFT + Section triggers MIDI Note G#3. Section = Punch Out Switch, MIDI note G#2
7. **Scroll / Zoom.** While in Arranger view, the encoder controls horizontal zooming. Navigation buttons control vertical zooming for the currently selected track.

While in Session view, pressing Zoom once will engage clip/scene launch mode. Zoom and Scroll will both light up.

- Encoder selects the next/previous scene. Navigation buttons select the next/previous track.
 - Press Zoom to launch the currently selected clip.
 - Press Scroll to launch the currently selected scene.
 - Press any other mode to leave clip/scene launch mode.
8. **Marker.** Encoder scrolls through timeline in Arranger view. Use the Navigation button to jump to Next or Prev markers. MIDI Note A2.

8.5 Automation Controls



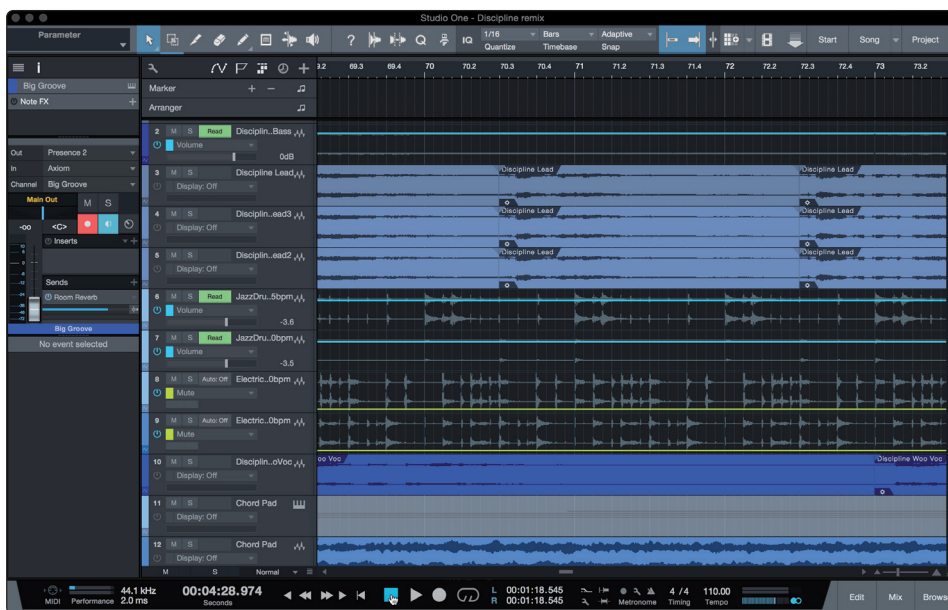
1. **Touch / Latch.** Press to Show/Hide Browser.
2. **Write / Trim.** Press to toggle Clip and Device views.
3. **Read / Off.** Press to toggle Session and Arrangement views.

8.6 Bypass



Bypass. Show/Hide detail view.

9 Studio One Artist Quick Start



All registered ioSTATION24c users receive Studio One Artist recording and production software. Whether you are about to record your first album or your fiftieth, Studio One Artist provides you with all of the tools necessary to capture and mix a great performance.

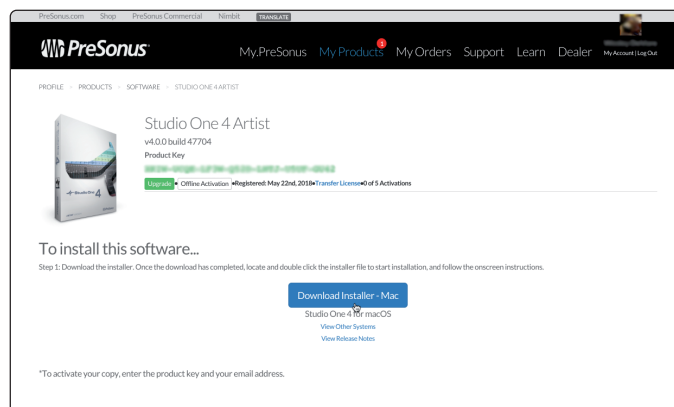
Power User Tip: As a valued PreSonus customer, you are eligible for a discount upgrade to Studio One Professional. For more details on the Studio One upgrade program for PreSonus customers, please visit <https://shop.presonus.com/products/software/studio-one-prods>.

9.1 Installation and Authorization

Once you have installed the drivers for your audio interface and connected it to your computer, you can use the included PreSonus Studio One Artist music-production software to begin recording, mixing, and producing your music. To install Studio One Artist, log into your My PreSonus account and register your ioSTATION24c. Your product key for Studio One Artist will automatically be registered to your My PreSonus account, along with your hardware registration.

Downloading and Running the Studio One Installer

To install Studio One Artist, download the Studio One Artist installer from your MyPreSonus account to the computer on which you will use it.



Windows: Launch the Studio One Artist installer and follow the onscreen instructions.

Mac: Drag the Studio One Artist application into the Applications folder on your Mac hard drive.

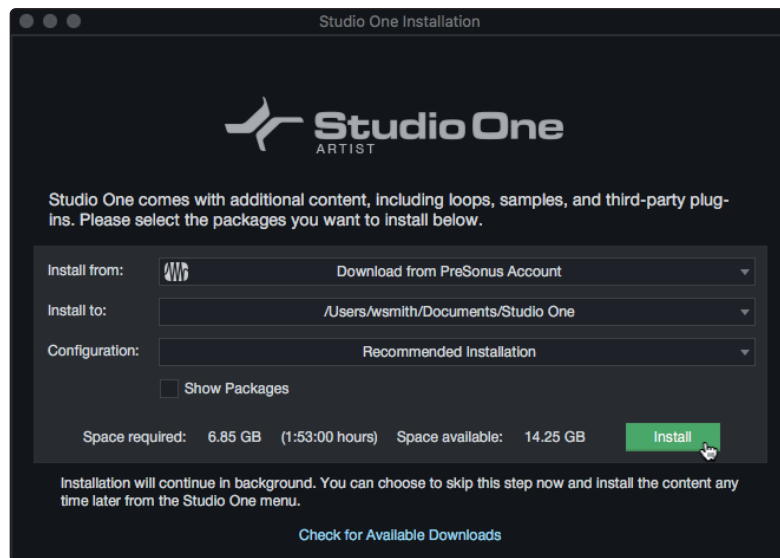
Authorizing Studio One

When Studio One is launched for the first time on your computer, it will communicate with your MyPreSonus account and verify your registration. To ensure a seamless authorization process, make sure to download your installer to the computer on which you will be using it, and be sure that your computer is connected to the Internet when you launch the application for the first time.

Installing Bundled Content for Studio One Artist

Studio One Artist comes bundled with an array of demo and tutorial materials, instruments, loops, and samples. The Studio One Artist bundle includes all that you need to begin producing music.

The first time you launch Studio One Artist, you will be prompted to install its companion content. Select the content you wish to add and click "Install." The content will automatically begin to download and install from your MyPreSonus user account.



Power User Tip: You may be prompted to enter your My PreSonus user account information. Clicking "Remember Credentials" will allow you to have immediate access to any content you purchase from the PreSonus Marketplace.

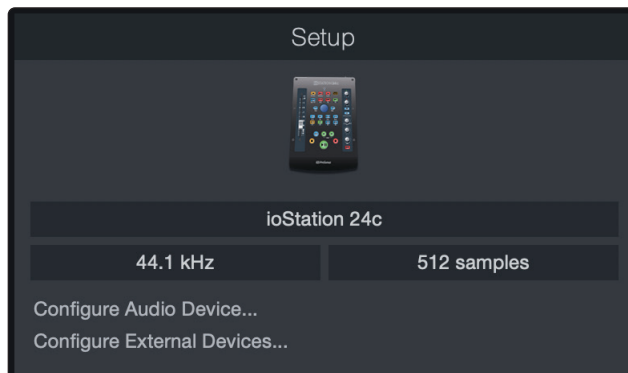
9.2 Setting Up Studio One

Studio One Artist was designed to work with PreSonus interfaces and provides unique interoperability and simplified setup. When Studio One Artist is launched, by default you will be taken to the Start page. On this page, you will find document-management and device-configuration controls, as well as a customizable artist profile, a news feed, and links to demos and tutorials from PreSonus. If your computer is connected to the Internet, these links will be updated as new tutorials become available on the PreSonus website.

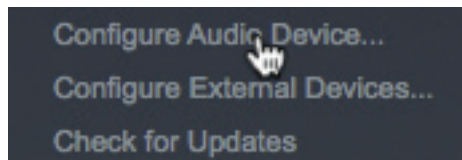
Complete information on all aspects of Studio One Artist is available in the Reference Manual PDF located within Studio One. The information in this tutorial covers only the basic aspects of Studio One Artist and is intended to get you set up and recording as quickly as possible.

9.2.1 Configuring Audio Devices

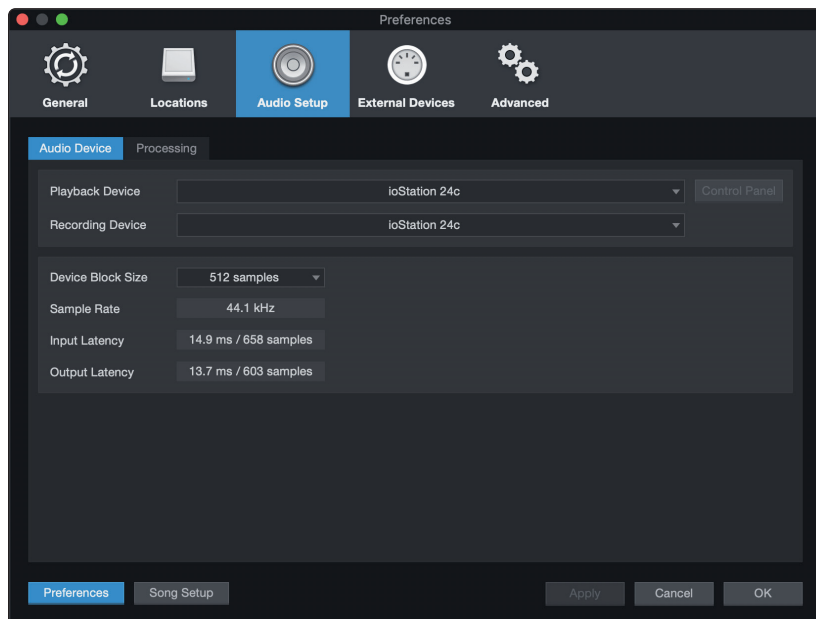
In the middle of the Start page, you will see the Setup area. Studio One Artist automatically scans your system for all available drivers and selects a driver. By default, it will choose a PreSonus driver if one is available.



1. Click on the Configure Audio Interface link to select your audio interface driver.



2. Select your audio interface from the Audio Device pull-down menu. From this page, you can also adjust your device buffer block size. Click OK when you are finished.



9.2.2 Configuring MIDI Devices

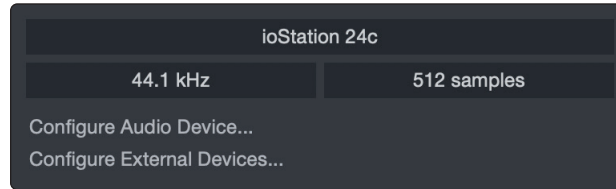
From the External Devices window in Studio One Artist, you can configure your ioSTATION24c, MIDI keyboard controller, sound modules, and control surfaces. This section will guide you through setting up your ioSTATION24c as well as MIDI keyboard controllers and sound modules. Please consult the Reference Manual located within Studio One for complete setup instructions for other MIDI devices.

If you are using a third-party MIDI interface or USB MIDI-controller keyboard, you must install any required drivers for these devices before beginning this section. Please consult the documentation that came with your MIDI hardware for complete installation instructions.

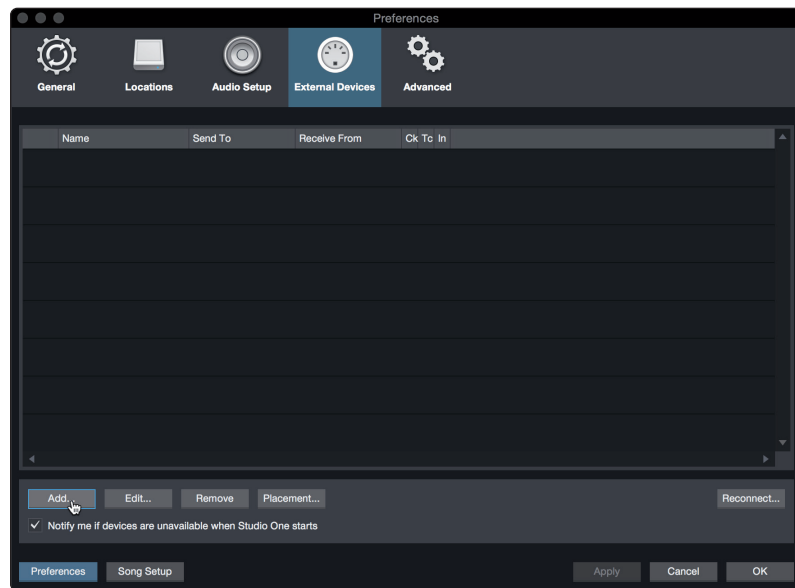
Setting up the ioSTATION24c

You can set up your ioSTATION24c from the Setup area in the Start page. Before you begin, make sure your ioSTATION24c is connected to one of your computer's USB ports, is powered on, and set to Studio One mode.

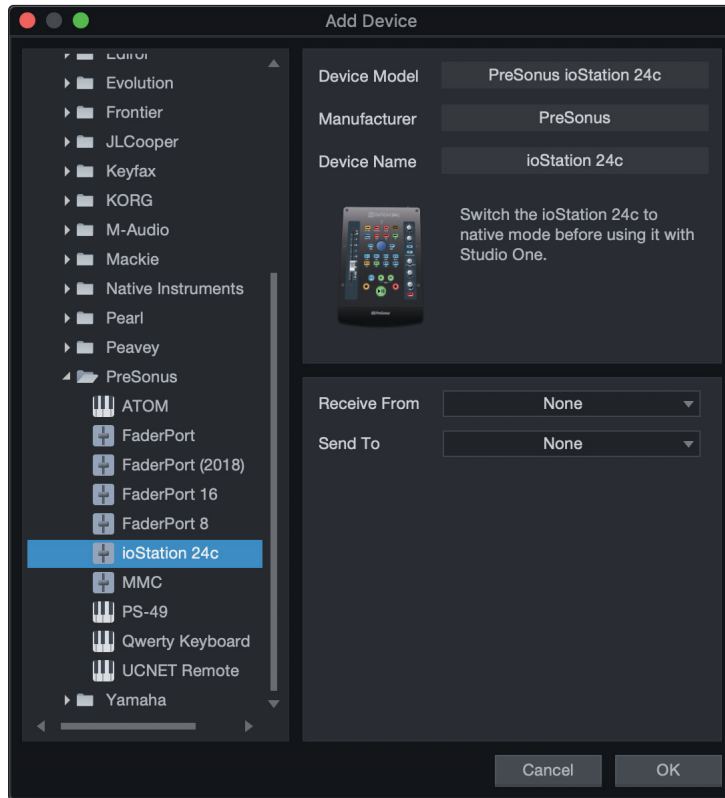
1. Click on the Configure External Devices link in the Setup area on the Start page to launch the External Devices window.



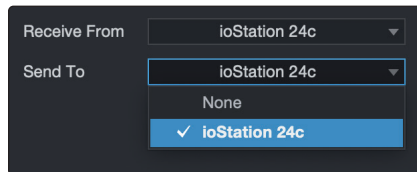
2. Click the Add button. This will launch the Add Device window.



3. From the menu on the left, click on the PreSonus folder and select "ioSTATION24c."



In the Receive From and Send To drop-down menus, select “ioSTATION24c.”



4. Click “OK.”

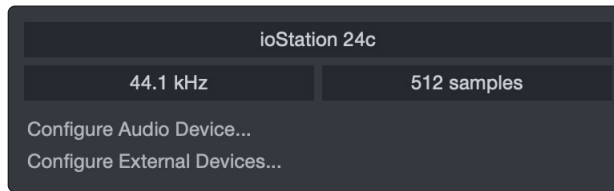
Setting up a MIDI Keyboard controller

A MIDI keyboard controller is a hardware device that is generally used for playing and controlling other MIDI devices, virtual instruments, and software parameters. In Studio One Artist, these devices are referred to as Keyboards, and they must be configured before they are available for use. In some cases, your MIDI keyboard controller is also used as a tone generator. Studio One Artist views the controller and tone-generation functions as two different devices: a MIDI keyboard controller and a sound module. The MIDI controls (keyboard, knobs, faders, etc.) will be set up as a Keyboard. The sound modules will be set up as an Instrument.

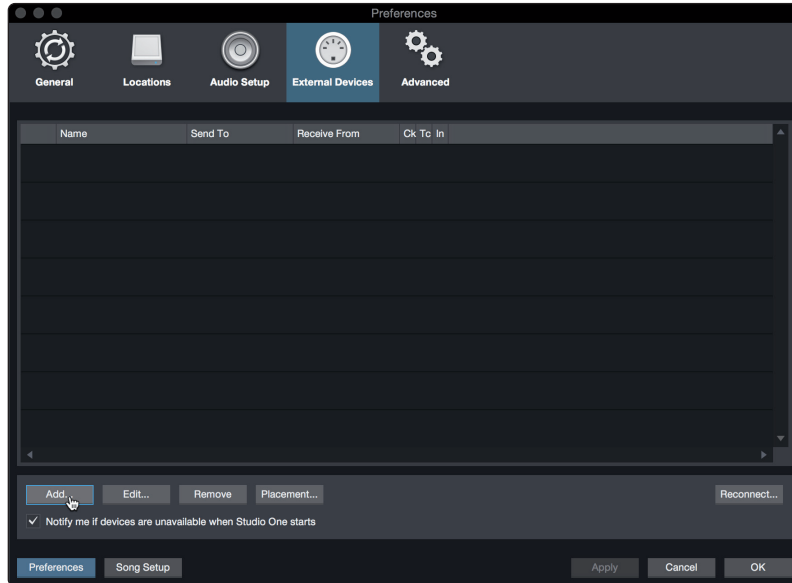
You can set up your external MIDI devices from the Setup area in the Start page. Before setting up a new Song for recording, take a moment to configure external devices.

Make sure you have connected the MIDI Out of your external MIDI controller to a MIDI In on your PreSonus audio interface (if available) or another MIDI interface. If you are using a USB MIDI controller, connect it to your computer and power it on.

1. Click on the Configure External Devices link in the Setup area on the Start page to launch the External Devices window.



Click the Add button. This will launch the Add Device window.



- From the menu on the left, select your MIDI controller from the list of manufacturers and models. If you do not see your MIDI controller listed, select New Keyboard. At this point, you can customize the name of your keyboard by entering the manufacturer and device names.



- You must specify which MIDI channels will be used to communicate with this keyboard. For most purposes, you should select all MIDI channels. If you are unsure of which MIDI channels to choose, select all 16.
- Studio One allows you to filter out specific control functions. If you would like Studio One to ignore Aftertouch, Pitch Bend, Program Change, or all CC messages, enable filtering for any or all of these messages.

5. In the Receive From drop-down menu, select the MIDI interface input from which Studio One Artist will receive MIDI data (that is, the MIDI port to which your keyboard is connected).

Power User Tip: In the Send To drop-down menu, select the MIDI interface output from which your Studio One Artist will send MIDI data to your keyboard. If your keyboard controller doesn't need to receive MIDI data from Studio One, you can leave this unselected.

6. If this is the only keyboard that you will use to control your external synthesizers and virtual instruments, you should check the box next to Default Instrument Input. This will automatically assign your keyboard to control all MIDI devices in Studio One Artist.
7. Click "OK."

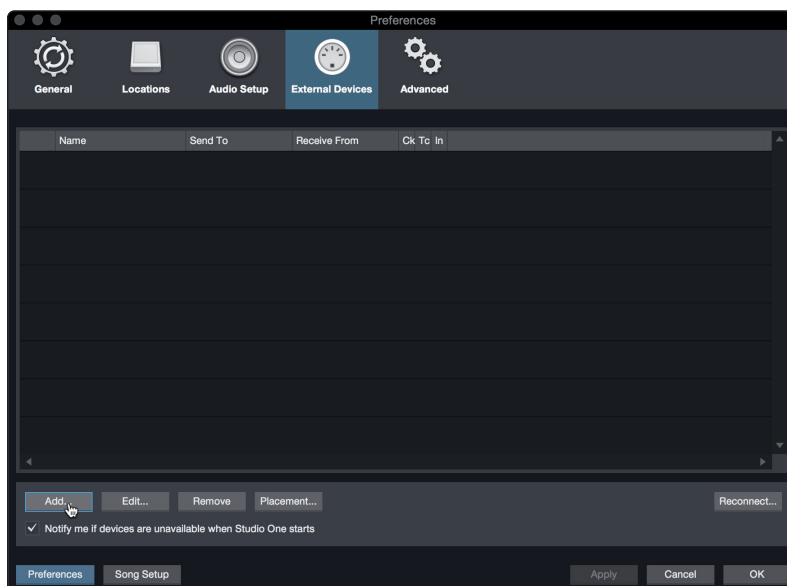
If you have a sound module that you'd like to connect, leave the External Devices window open and proceed to the next part of this section. If not, you can close the window and skip to the next section.

Setting up an External MIDI Sound Module

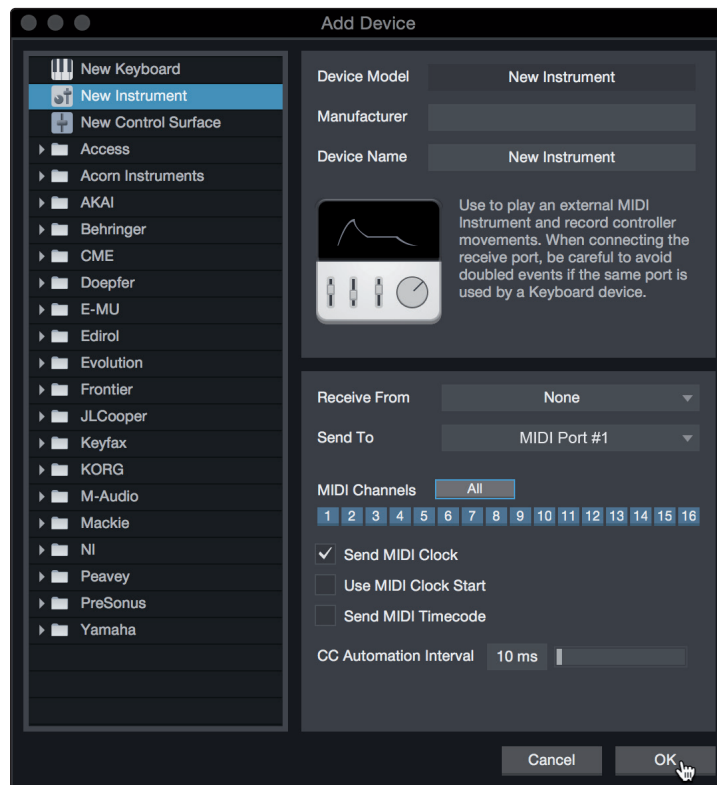
MIDI instrument controllers (keyboards, MIDI guitars, etc.) send musical information, in the form of MIDI data, to tone modules and virtual instruments, which respond by generating sound as instructed. Tone modules can be standalone sound devices or can be integrated into a MIDI instrument, such as a keyboard synthesizer. Studio One Artist refers to all tone generators as Instruments. Once you have set up your MIDI keyboard controller, take a moment to configure your sound module.

Make sure you have connected the MIDI In of your external sound module to the MIDI Out of your MIDI interface.

1. In the External Devices window, click the Add button.



2. Select your device in the menu on the left. If your device is not listed, select New Instrument. At this point, you can customize the name of your keyboard by entering the manufacturer and device names.



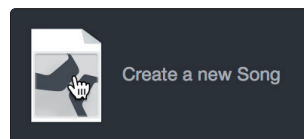
3. Specify which MIDI channels will be used to communicate with this sound module. For most purposes, you should select all MIDI channels. If you are unsure of which MIDI channels to select, we suggest you select all 16.
4. In the Send To menu, select the MIDI interface output from which Studio One Artist will send MIDI data to your sound module. Click "OK" and close the External Devices window. You are now ready to start recording in Studio One Artist.

The rest of this Quick Start Guide will go over how to set up a Song and will discuss some general workflow tips for navigating through the Studio One Artist environment.

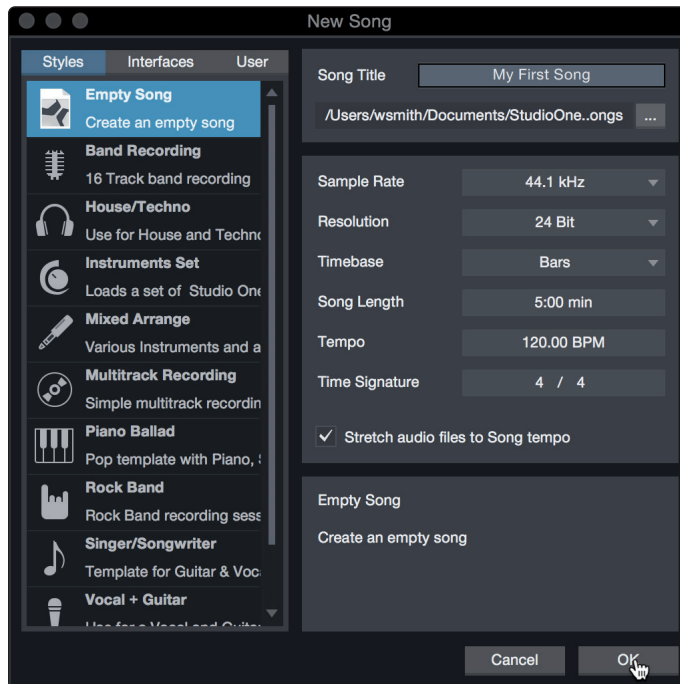
9.3 Creating a New Song

Now that you've configured your audio and MIDI devices, let's create a new Song. We'll start by setting up your default audio I/O.

1. From the Start page, select "Create a New Song."



2. In the New Song window, name your Song and choose the directory in which you'd like it saved. You'll notice a list of templates on the left. These templates provide quick setups for a variety of devices and recording situations. The section will describe creating a Song from an empty session.

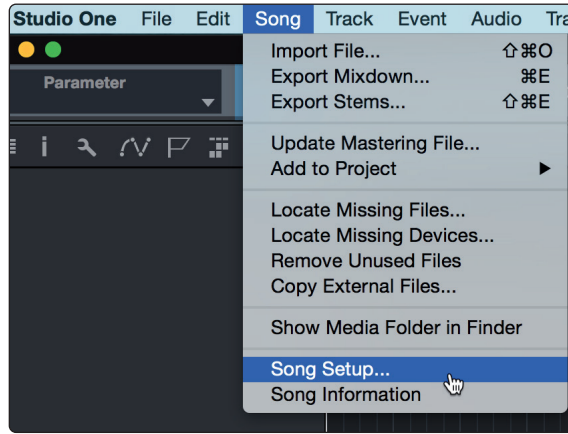


3. Select "Empty Song" from the Templates list. At this point, you should give your Song a name and select your preferred sample rate and bit depth for recording and playback. You can also set the length of your Song and the type of time format you would like the timeline to follow (notation bars, seconds, samples, or frames). Click the OK button when you are finished.

Power User Tip: If you plan to import loops into your Song, make sure that the *Stretch Audio Files to Song Tempo* option is selected. This will automatically import loops at the correct tempo.

9.3.1 Configuring Your Audio I/O

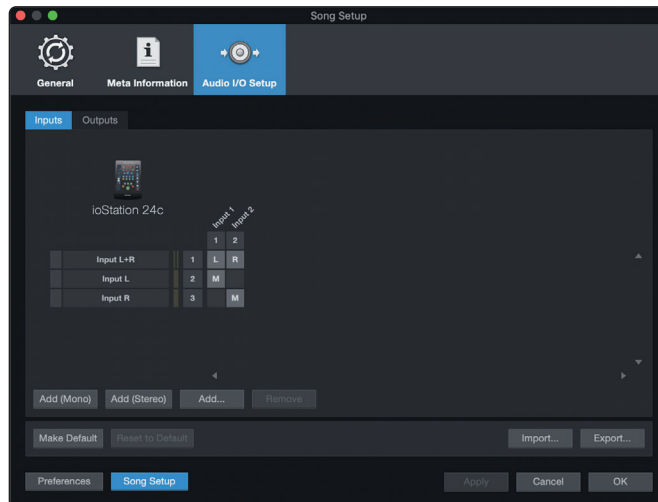
1. Click on Song | Song Setup to set your sample rate and resolution and configure your audio I/O.



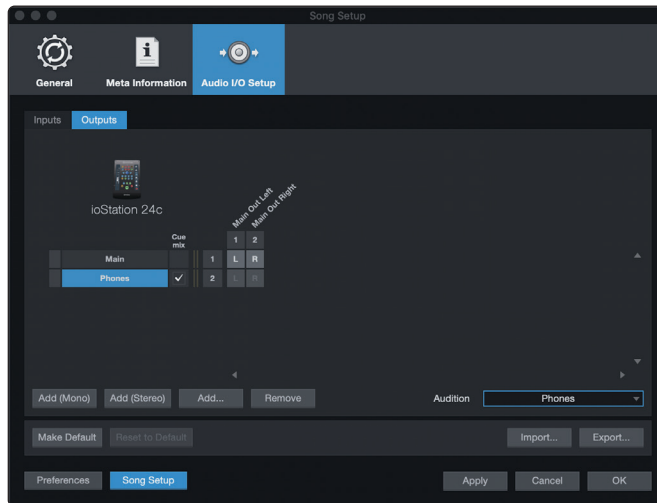
2. Click on the Audio I/O Setup tab.



3. From the Inputs tab, you can enable any or all of the inputs on your audio interface that you'd like to have available. We recommend that you create a mono input for each of the inputs on your interface. If you plan on recording in stereo, you could create a stereo input.



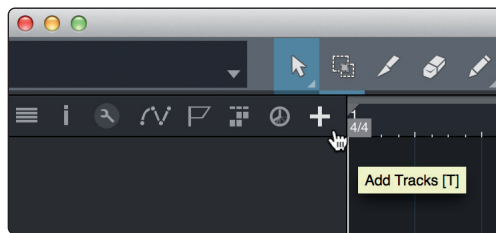
4. Click on the Outputs tabs to enable any or all of the outputs on your audio interface. In the lower right corner, you will see the Audition Select menu. This allows you to choose the output from which you will audition audio files prior to importing them into Studio One Artist. In general, you will want this to be the main output bus.



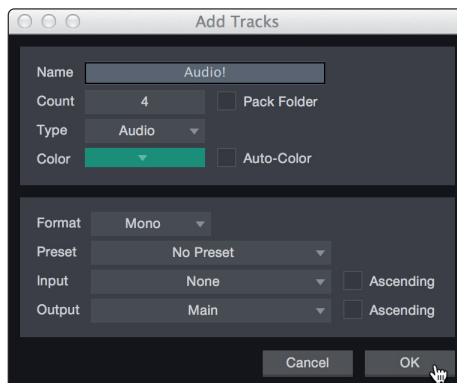
Power User Tip: If you would like this I/O configuration to be the same every time you open Studio One, click the Make Default button.

9.3.2 Creating Audio and Instrument Tracks

1. In the upper left corner of the Arrange window, you will notice several buttons. The button furthest to the right is the Add Tracks button. Click on this button to open the Add Tracks window.



2. In the Add Tracks window, you can customize the track name and color, add a preset rack of effects, and set the physical source for the input and output of your audio tracks. Most important, you can select the number and type of tracks you'd like to create.



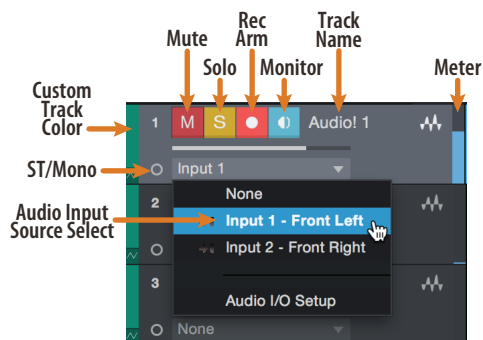
Audio. Use this track type to record and playback audio files.

Instrument. Use this track to record and playback MIDI data to control external MIDI devices or virtual instrument plug-ins.

Automation. This track type lets you create automated parameter controls for your session.

Folder. This track helps you to manage your session as well as to quickly edit multiple tracks at once.

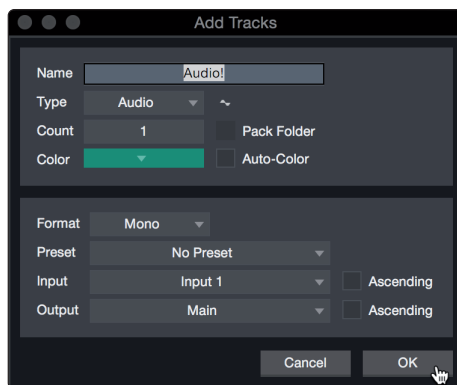
Power User Tip: If you would like to add an audio track for each of the available inputs, go to *Track | Add Tracks for All Inputs*.



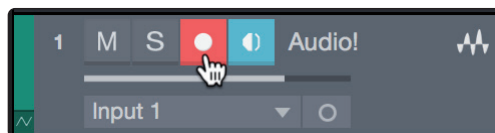
Note: Instrument tracks are nearly identical to audio tracks. The Input Source list for Instrument tracks lists available external MIDI devices as well as any virtual instruments that have been added to the Song.

9.3.3 Recording an Audio Track

- To begin recording, create an audio track from the Add Tracks window, set its input to Input 1 on your audio interface, and connect a microphone to the same input.



- Select Record Enable on the track. Turn up the Input 1 level on your audio interface while speaking/singing into the microphone. You should see the input meter in Studio One Artist react to the input. Adjust the gain so the input level is near its maximum without clipping (distorting).



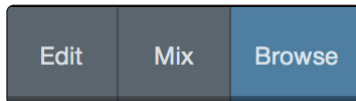
You are now ready to start recording. *For complete instructions, please consult the Studio One Reference manual located in Help | Studio One Reference Manual.*

9.3.4 Adding Virtual Instruments and Effects

You can add plug-ins and instruments to your Song by dragging-and-dropping them from the browser. You can also drag an effect or group of effects from one channel to another, drag in customized effects chains, and instantly load your favorite virtual-instrument preset without ever scrolling through a menu.

Opening the browser

In the lower right corner of the Arrange window are three buttons:



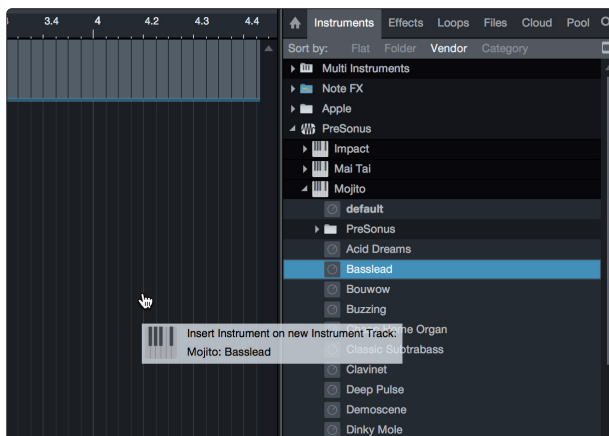
Edit. The Edit button opens and closes the audio and MIDI editors.

Mix. The Mix button opens and closes the Mixer window.

Browse. The Browse button opens the browser, which displays all of the available virtual instruments, plug-in effects, audio files, and MIDI files, as well as the pool of audio files loaded into the current session.

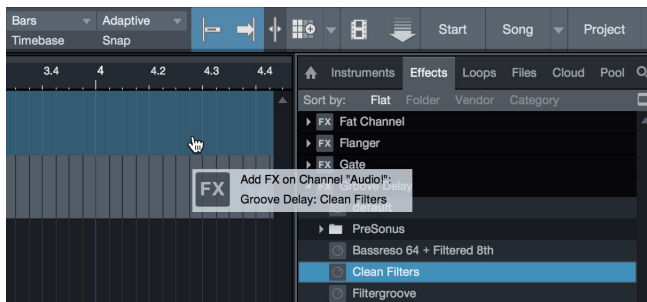
Drag-and-Drop Virtual Instruments

To add a virtual instrument to your session, open the browser and click on the Instrument button. Select the instrument or one of its patches from the Instrument browser and drag it into the Arrange view. Studio One Artist will automatically create a new track and load the instrument as the input.



Drag-and-Drop Effects

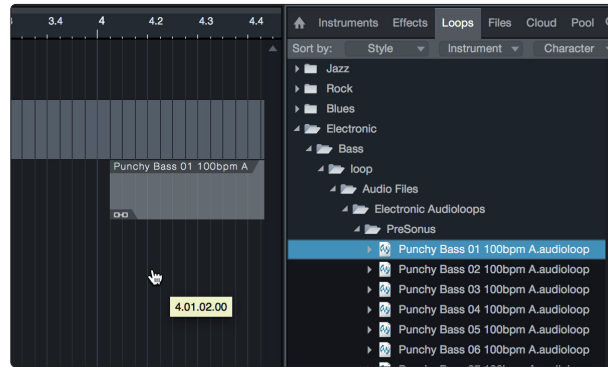
To add a plug-in effect to a track, click the Effects button in the browser and select the plug-in or one of its presets in the effects browser. Drag-and-drop the selection over the track to which you would like to add the effect.



Drag-and-Drop Audio and MIDI Files

Audio and MIDI files can be quickly located, auditioned, and imported into your Song by dragging them from the file browser into the Arrange view. If you drag the file to an empty space, a new track will be created with

that file placed at the position to which you dragged it. If you drag the file to an existing track, the file will be placed as a new part of the track.

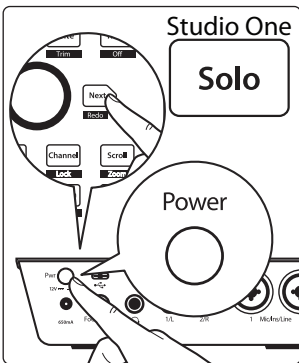


10 Appendix

10.1 Operation Modes

DAW	Recommended Mode
Ableton Live	MCU (Live)
Apple Logic	MCU (Logic)
Avid Pro Tools	HUI
MOTU Digital Performer	MCU (Logic)
PreSonus Studio One	Studio One
Steinberg Cubase	MCU (Cubase)
Steinberg Nuendo	MCU (Cubase)
Others	<p>MCU (Logic); If "ioSTATION24c" is not listed as a supported device in your DAW, configure it as an Mackie Control Universal. Note that the ioSTATION24c's control performance may vary depending your DAW's MCU implementation.</p> <p>OR</p> <p>Studio One. If "ioSTATION24c" is listed as a supported device by your DAW, it has been integrated into your application using the Studio One native protocol.</p>

10.2 ioSTATION24c MIDI Protocol



Studio One operation mode employs a native MIDI protocol. For advanced users or developers, this MIDI protocol can be used to access the ioSTATION24c user interface elements directly.

To access this mode, press and hold the Next button on power up, then press Solo.

10.2.1 SysEx

SysEx	
SysEx header <SysExHdr>	F0 00 01 06 16
Manufacturer ID	00 01 06
ioSTATION24cDevice ID	0x0208

10.2.2 Fader

Use MIDI pitch bend message to transmit fader moves and receive fader positions. Channel 0 is used to address the fader.

Faders	
Received	E0, ll, hh
Transmitted	E0, ll, hh
Low 7 bits	ll
High 7 bits	hh

10.2.3 Session Navigator Encoder

Use CC messages to transmit increment and decrement values.

Transmitted endless rotary encoder delta values:

Session Navigator Encoder: **B0, 3C, xx**

xx delta value bit (Bit 7 = direction, Bits 0-6 = number of steps)

10.2.4 Buttons and LEDs

Buttons use Note On/Off messages to transmit the pressed and released state on channel 0.

LEDs use Note On/Off messages to receive the on, off and flashing state on channel 0.

Transmitted	
Button press and release message	90, id, ss
ID	See ID Table
ss	State (Release: 00, Pressed, 7F)
Received (On, Off, Flashing)	
LED on / off message	90, id, ss
ID	See ID Table
ss	State (Off: 00, On: 7F, Flashing: 01)
Received (Color)	
LED Color message	MIDI channel 1-3 is used to set the RGB values of a LED color with 7-bit resolution per color
Red	91, id, cc
Green	92, id, cc
Blue	93, id, cc
ID	See ID table
cc	7-bit color value

Button and LED ID Tables:

Channel Strip Controls		
Button Label	ID (Hex)	LED Type
Arm	00	LED
Bypass	03	LED
Solo	08	LED
Mute	10	LED
Fader Touch	68	n/a
SHIFT	46	LED

Session Navigator		
Button Label	ID (Hex)	LED Type
Prev	2E	LED
Session Navigator Push Encoder	20	n/a
Next	2F	LED
Link	05	RGB
Pan	2A	RGB
Channel	36	RGB
Scroll	38	RGB
Master	3A	LED
Click	3B	LED
Section	3C	LED
Marker	3D	LED

Automation		
Button Label	ID (Hex)	LED Type
Read	4A	RGB
Write	4B	RGB
Touch	4D	RGB

Transport		
Button Label	ID (Hex)	LED Type
Loop	56	LED
Rewind	5B	LED
Fast Forward	5C	LED
Stop	5D	LED
Play	5E	LED
Record	5F	LED
Footswitch	66	n/a

Added bonus: PreSonus' previously Top Secret recipe for . . .

Redfish Couvillion

Ingredients:

- ¼ C Vegetable oil
- ¼ C flour
- 1 onion diced
- 1 clove garlic minced
- 1 green pepper diced
- 3 celery stalks diced
- 1 14oz can diced tomatoes
- 1 bottle light beer
- 2 bay leaves
- 1 tsp thyme
- 2 lbs Redfish fillets

Cooking Instructions:

1. In a heavy saucepan or large skillet, heat oil on medium high and slowly add flour a tablespoon at a time to create a roux. Continue cooking the roux until it begins to brown, creating a dark blond roux.
2. Add garlic, onions, green pepper, and celery to roux.
3. Sauté vegetables for 3-5 minutes until they start to soften.
4. Add tomatoes, bay leaves, thyme, and redfish. Cook for several minutes.
5. Slowly add beer and bring to a low boil.
6. Reduce heat and simmer uncovered for 30-45 minutes until redfish and vegetables are completely cooked, stirring occasionally. Break up redfish into bite size chunks and stir in. Add pepper or hot sauce to taste. Do not cover.
7. Serve over rice

Serves 6-8

While not one of Southeast Louisiana's more famous dishes, Redfish Couvillion is a favorite way to serve our favorite Gulf fish. Also known as Reds or Red Drum, Redfish is not only fun to catch, it's also delicious!

ioSTATION24c

Audio Interface and Production Controller

Owner's Manual

