

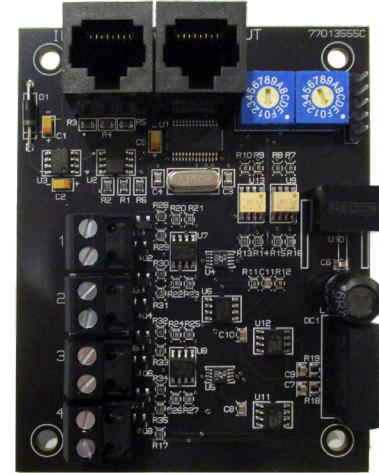


Overview

The LightSync Digital Dimming Module is designed for 0 -10V device control. This dimmer is galvanically isolated up to 1500V and designed to be used with MC luminary style cable. This module can be installed in the lighting control panel or remotely mounted on the panel local CAT-5 network. Each of the 4 independent channels can control up to 100 ballasts with 256 steps between 0 and 10V. Outputs are designed to sink voltage up to 100mA per channel. Each output may be programmed to respond to 16 inputs per channel. Upon loss of power, the dimmer outputs will go to 10V or full brightness. The intuitive software provided makes it easy to program and adjust the settings.

Features

- **Made in the USA, meets BAA and BABA Requirements**
- **Digital CAT 5** ready
- **4 independent channels** per module provide the flexibility to control up to 4 zones
- **Each output** can control up to 100 typical ballast at .5mA each (sink voltage)
- **Galvanically** isolated up to 1500V
- **Power-On level settings** allows each output to be configured for 0 to 100% levels upon power-up
- **Power loss** to dimmer module sets dimming to full brightness
- **LightSync photocell** tracking programmed directly to output point(s)
- **Each output may be programmed** to respond to 16 LightSync or hardwire inputs. Each input can be programmed to force the output to a preset level, raise or lower at 10% increments and can work in conjunction with a photocell. Inputs can be set to “revert to photocell control”

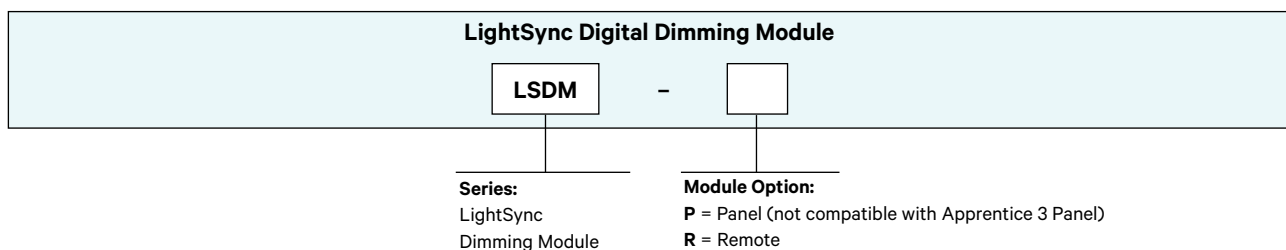


- after a period of time that can range from 5 to 600 minutes in 5 minute increments.
- **Fade rate** of 0 to 300 seconds can be programmed for each output
- **Minimum and maximum output** levels can be configured for each output
- **With a DMX512 serial interface**, each output can be controlled by any of the 512 DMX512 signal channels
- **Panel mount (P)** option for mounting with relay driver module
- **Remote mounting (R)** provided with 4-11/16” J-box
- **RJ45 connectors** for connection to LightSync network using CAT-5 cable
- **Removable connectors** for easy installation
- **Digitally** addressable
- **12 dimmer modules** supported for a maximum of 48 channels

Warranty

Five-Year limited warranty

Ordering

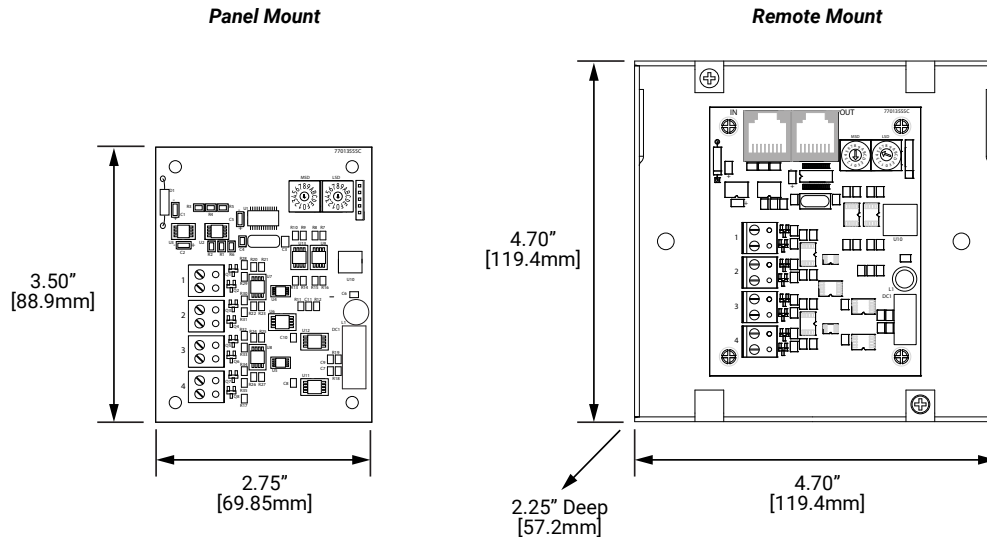


All ILC product configurations are built to be compliant with the Buy American Act of 1933 (BAA) or the Build America Buy America Act (BABA). BABA is the minimum Government compliance requirement for the Build America Buy America standards which is part of the Infrastructure and Investment Jobs Act (IIJA). Individual Government Agencies may have more stringent compliance standards. Please refer to the [DOMESTIC PREFERENCES](#) website or consult the CLS Domestic Preferences team for more information. Components shipped separately may be separately analyzed under domestic preference requirements.

LightSync Digital

Dimming Module

Physical



Specifications

Physical:

- 2.75" Wide X 3.5" High
- Removable output connectors
- Digital addressing switches
- RJ45 connectors for CAT-5 to the panel local port

Electrical:

- Powered from the panel or from the LightSync network
- 100mA sink per channel
- 0-10VDC

Configuration:

- Software programming
- Directly through keypad

Operating Environment:

- Location: Interior space
- Operating Temp.: 0° to 50° C
- Humidity: 10% - 90% Non-condensing
- Atmosphere: Non-explosive/corrosive
- Vibration: Stationary

Domestic Preferences:

Domestic preference options to meet BAA or BABA requirements. BABA is the minimum Government compliance requirement for the Build America Buy America standards which is part of the Infrastructure and Investment Jobs Act (IIJA). Individual Government Agencies may have more stringent compliance standards. Please refer to the [DOMESTIC PREFERENCES](#) website or consult the CLS Domestic Preferences team for more information. Components shipped separately may be separately analyzed under domestic preference requirements.

Certifications and Approvals:

- FCC Part 15