



# ew IEM G4

- Quick Guide
- Kurzanleitung
- Guide rapide
- Guida rapida
- Guía de inicio rápido
- Guia rápido
- Beknopte handleiding
- Krótka instrukcja obsługi
- Snabbguide
- Kort vejledning
- Pikaohje
- Γρήγορος οδηγός
- Kısa Kılavuz
- Краткая инструкция
- 快速指南
- 快速使用指南
- クイックガイド
- 퀵 가이드

SENNHEISER



[www.sennheiser.com/download](http://www.sennheiser.com/download)

Sennheiser electronic GmbH & Co. KG

Am Labor 1, 30900 Wedemark, Germany  
[www.sennheiser.com](http://www.sennheiser.com)

Printed in Germany, Publ. 01/24, 575863/A02

## SR IEM



## EK IEM



## Battery

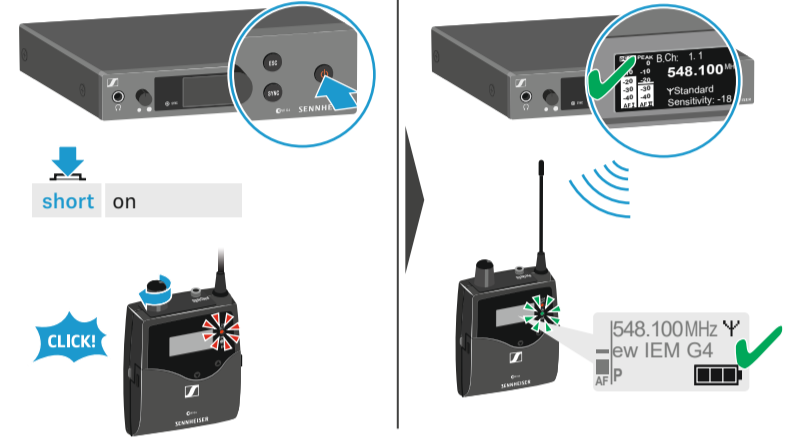


## Low Battery

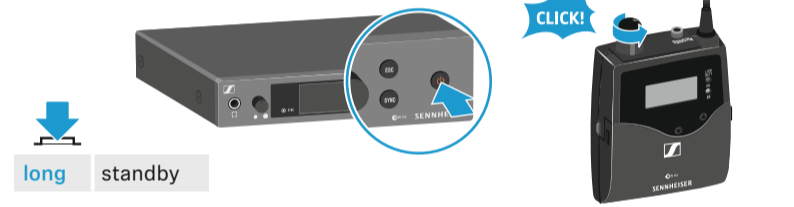
	100 %	> 8 h
	70 %	4 - 6 h
	30 %	2 - 3 h

LOW BATT

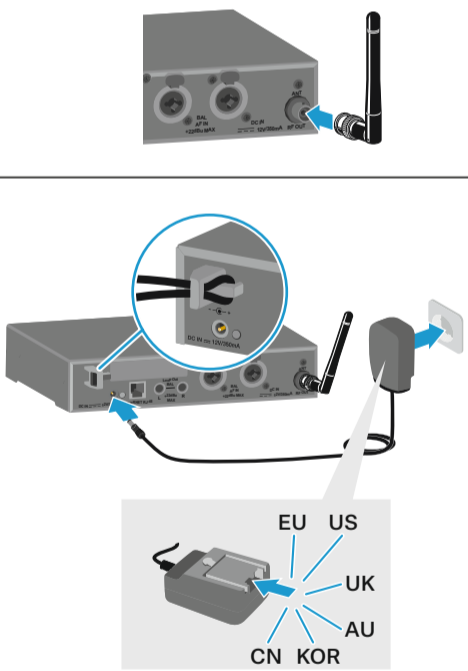
## On



## Off



## Setup



## Standard display

Frequency Bank . Channel: U1.16 ew IEM  
Name: ew IEM  
Warnings: RF Mute548.100 MHz  
Y Standard  
Sensitivity: -18dB

Audio level (mono) Sensitivity Mono  
Audio level (stereo) Sensitivity Stereo  
Transmission Power  
Input sensitivity  
Auto lock

## LEDs

Warnings LED  
Sync LED

A: 548.100MHz ew IEM G4 MUTE  
B: Balance L=R

## Menu

UP DOWN  
ESC  
SET

SET → Main menu "Menu"  
Sensitivity  
Mode  
Easy Setup  
Frequency Preset  
Name  
Auto Lock  
Advanced  
Exit

Extended menu "Advanced Menu"  
Tune  
Sync Settings  
RF Power  
Fullscreen Warnings  
Brightness  
Reset  
IP-Address  
Software Revision  
Exit

"Fullscreen Warnings"  
AF Peak  
RF Mute  
Exit

DOWN  
UP  
SET  
ESC

SET → Main menu "Menu"  
Squelch  
Easy Setup  
Frequency Preset  
Name  
Balance  
Mode  
High Boost  
Auto Lock  
Advanced  
Exit

"Easy Setup"  
Reset List  
Current List  
Scan New List

Extended menu "Advanced Menu"  
Tune  
Pilot Tone  
Limiter  
Volume Boost  
LCD Contrast  
Engineer Mode  
Reset  
Software Revision  
Exit

**Stereo**

6.3 mm

XLR-3

OR

Instruction Manual

AUX

SR

Mode  
Stereo

EK

Menu  
Mode  
Stereo

**Mono**

6.3 mm

XLR-3

OR

Instruction Manual

AUX

SR

Mode  
Mono

EK

Menu  
Mode  
Focus  
Advanced Menu  
Pilot Tone  
Inactive

**Phones**

VOLUME

6.3 mm

VOL < 70%

**Auto lock**

SR

1 2 3

Locked Unlock?

SET SET

10 s Auto lock

Instruction Manual

EK

1 2 3

Locked Unlock?

SET SET

**Sync**

SYNC

OR

SYNC

x SYNC

Instruction Manual

$\leq 10\text{ cm}$   
 $\leq 4''$

**Sensitivity**

-42 dB ... 0 dB

Menu  
Exit  
Sensitivity  
Mode  
-18dB

**Squelch**

Menu  
Squelch  
9 dB

25 dB

5 dB

RF

**Mute**

Instruction Manual

RF Mute On?

RF Mute Off?

SET

**Network Control**

WSM  
Media Control

ETHERNET

**Multichannel - Easy Setup**

Bank 1 ... 20; U1 ... U6  
Channel 1 ... 16

max. 16 channels

RJ 45

Menu  
Easy Setup  
Frequency Preset

Menu  
Easy Setup

Instruction Manual