

PRELIMINARY DATA ONLY



ELECTRAPIX BAR 8

The ADJ Lighting ElectraPix Bar 8 is a cutting-edge, .5-Meter battery powered, wireless DMX lighting solution. Packed with advanced features, this fixture boasts eight 20-Watt Hex Color LED (RG-BAL+UV), providing unparalleled control and creativity. Powered by either batteries or wall outlets, it offers 5 hours of standard battery operation or an extended 10-hour saver mode.

With individual pixel control, built-in foreground and background LED programs, and a variable white color temperature range, the ElectraPix Bar 8 ensures dynamic lighting possibilities. Its color-calibrated LEDs, user-selectable dim modes, and electronic strobe/dimming enhance versatility.

Designed for adaptability, the IP65-Rated housing, OLED digital display, L Track system, and adjustable feet make installation and customization a breeze. The fixture's control options include DMX512, Aria X2 Wireless DMX, Bluetooth, RDM compatibility, and an included UCIR24 wireless remote.

The ElectraPix Bar 8 guarantees reliability with certifications such as CE, FCC, and pending cETLus, while its IP65-Rating ensures durability in various environments. Included accessories like the outdoor locking power cable and UCIR24 remote, along with optional add-ons, make this fixture a comprehensive lighting solution for professionals. Elevate your lighting design with the ElectraPix Bar 8, where innovation meets performance.



ELECTRAPIX BAR 8



LIGHT SOURCE:

- (8) 20W Hex Color RGBAL+UV Foreground LEDs
 - (32) 0.2W RGB Background LEDs
 - 50,000 Hour Average Life*
- *May vary depending on several factors including but not limited to: Environmental Conditions, Power/Voltage, Usage Patterns (On-Off Cycling), Control, and Dimming.

FEATURES:

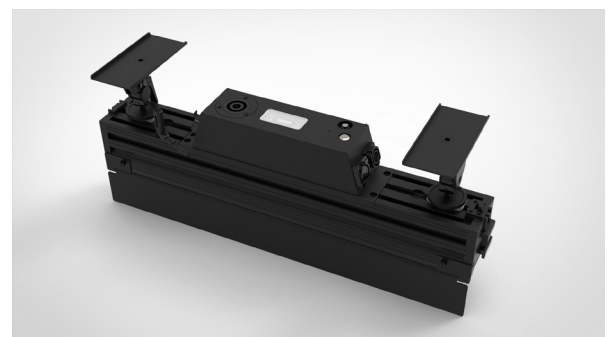
- 8 Pixel, Hex Color (RGBAL+UV) LED Bar
- Battery or Wall Powered
- 5 Hour Standard Battery Operation and 10 Hour Saver Battery Operation (Menu Option)
- Individual Pixel Control
- Built-In Foreground LED Programs
- Built-In Background LED Programs
- Variable White Color Temperature Control (2,700K ~ 9,900K)
- English & Spanish User Menu
- Built-In Alarm
- Color Calibrated LEDs
- User Selectable LED Refresh Rates (900Hz ~ 25K)
- 6 User Selectable Dim Modes
- 4 User Selectable Dim Curves
- Electronic Strobe (0.3Hz ~ 11Hz)
- Electronic Dimming

OPTICAL:

- 2,300K ~ 9,900K White Color Temperature Range
- 17° Beam Angle
- 45mm Lens Diameter x8

PHYSICAL:

- IP65-Rated Housing
- OLED Digital display
- L Track system for locking accessories / rigging
- Glare Shield
- Diffusion Filter slot
- Angle adjustable feet
- Horizontal slide lock to attach additional ElectraPix Bar 8 or ElectraPix Bar 16



CONTROL:

- DMX512
- Aria X2 Wireless DMX
- Bluetooth
- RDM and RDM Net Compatible
- IR (Includes UCIR24 wireless remote)
- (9) DMX Channel Modes (5, 6, 9, 13, 22, 24, 48, 52 & 66 Channel modes))
- On-board Manual Control Mode
- Primary / Secondary Mode

CONNECTIONS:

- 5pin XLR Outdoor DMX In/Out Sockets (Must be used with STRxxx, 5pin DMX cables to create IP65 seal)
- Outdoor Locking Power Sockets
- Battery Charging Socket

DIMENSIONS / WEIGHT:

- Length: 3.38" (85.7mm)
- Width: 23.24" (590.3mm)
- Height: 7.53" (191.2mm)
- Weight: ? lbs. (? kg)

ELECTRICAL:

- AC100-240V/50Hz-60Hz Input
- 60W Power Consumption
- Link 15 pieces @120VAC or 28 pieces @ 230VAC

THERMAL:

- Ambient Operational Temperature: -4°F to 113°F (-20°C to 45°C)
- Storage Temperature: -22°F to 113°F (-30°C to 45°C)

BATTERY:

- Rechargeable Lithium ion
- Battery Capacity: 7,000mAh
- Battery Voltage: 22.2V
- Charge Time: 6 Hours (To Full)
- 5 Hour Standard Operation at Full Output and 10 Hour Saver Mode Operation at Full Output Selectable in the menu
- Battery Cycles: 500

APPROVALS / RATINGS:

- CE
- cETLus (Pending)
- FCC
- IP65

INCLUDED ACCESSORIES:

- (1) Outdoor Locking Power Cable
- (1) UCIR24 Remote
- (1) 20° Diffusion Filter

OPTIONAL ACCESSORIES:

- LuminPix Bar FB
- LTrack A2 (LTrack Adapter Only)
- LTrack CA2 (LTrack Adapter with Narrow Clamp)



Includes UCIR24
Wireless Remote

