

PHOTOMETRIC TEST REPORT



FIXTURE DATA

Manufacturer: Clay Paky s.r.l.
Fixture model: VOLERO CUBE
Date: 2024-11-21

TABLE OF CONTENTS:

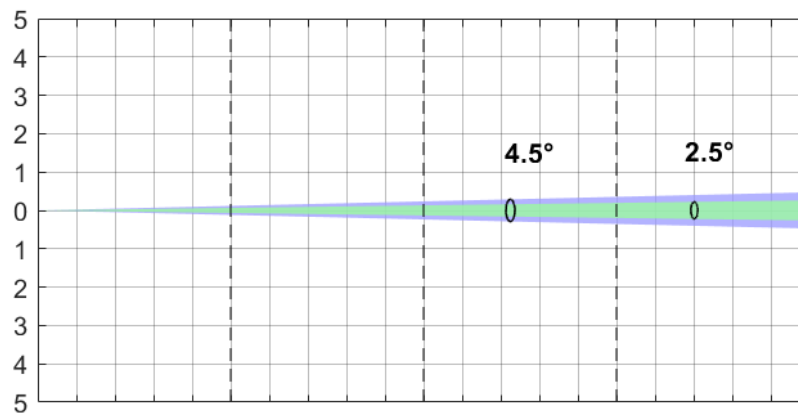
➔ FAN MODE: AUTO - ZOOM: MIN	3
➔ FAN MODE: AUTO - ZOOM: MAX	4
➔ FAN MODE: CONSTANT - ZOOM: MIN	5
➔ FAN MODE: CONSTANT - ZOOM: MAX	6
➔ FAN MODE: SILENT - ZOOM: MIN	7
➔ FAN MODE: SILENT - ZOOM MAX	8
➔ FAN MODE: THEATRE - ZOOM: MIN	9
➔ FAN MODE: THEATRE - ZOOM: MAX	10
➔ STROBE - ZOOM: MIN	11
➔ STROBE - ZOOM: MAX	12
➔ TM-30: FULL COLOR	13
➔ TLCI-2012: FULL COLOR	14
➔ TM-30: WHITE	15
➔ TLCI-2012: WHITE	16
➔ TM-30: CTO 4%	17
➔ TLCI-2012: CTO 4%	18
➔ TM-30: CTO 100%	19
➔ TLCI-2012: CTO 100%	20

FAN MODE: AUTO - ZOOM: MIN

Minimum Zoom - Auto Fan mode (4.5° 10% - 2.5° 50%)

Total Output: 2688 lumens

	Lux (fc)	Lux (fc)	Lux (fc)	Lux (fc)
Full Colour	104367 (9696)	26092 (2424)	11596 (1077)	6523 (606)
White	59206 (5500)	14801 (1375)	6578 (611)	3700 (344)
Red	24003 (2230)	6001 (557)	2667 (248)	1500 (139)
Green	35458 (3294)	8865 (824)	3940 (366)	2216 (206)
Blue	7175 (667)	1794 (167)	797 (74)	448 (42)
CTO 4%	96972 (9009)	24243 (2252)	10775 (1001)	6061 (563)
CTO 100%	43308 (4023)	10827 (1006)	4812 (447)	2707 (251)



Distance	m (ft in)	0	3 (9' 10")	6 (19' 8")	9 (29' 6")	12 (39' 4")
Diameter 10%	m (ft in)	0	0.23 (0' 9")	0.47 (1' 6")	0.70 (2' 4")	0.94 (3' 1")
Diameter 50%	m (ft in)	0	0.13 (0' 5")	0.26 (0' 10")	0.40 (1' 4")	0.53 (1' 9")

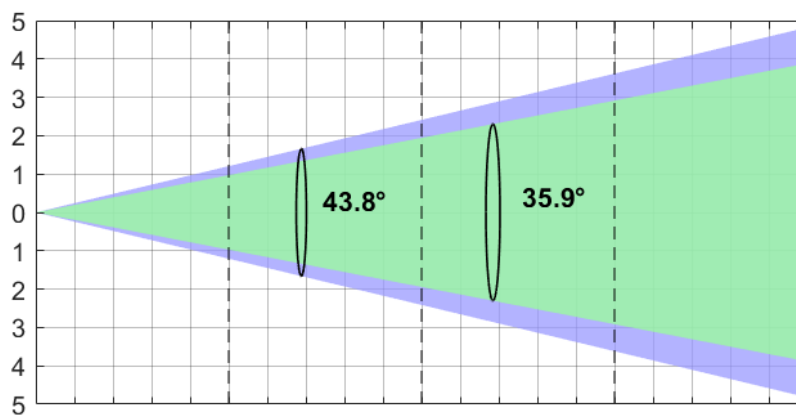
*Lumen values detected with integrating sphere. Measurements taken 15 minutes after the fixture was turned on.

FAN MODE: AUTO - ZOOM: MAX

Maximum Zoom - Auto Fan mode (43.8° 10% - 35.9° 50%)

Total Output: 3746 lumens

	Lux (fc)	Lux (fc)	Lux (fc)	Lux (fc)
Full Colour	1064 (99)	266 (25)	118 (11)	66 (6)
White	892 (83)	223 (21)	99 (9)	56 (5)
Red	378 (35)	94 (9)	42 (4)	24 (2)
Green	569 (53)	142 (13)	63 (6)	36 (3)
Blue	117 (11)	29 (3)	13 (1)	7 (1)
CTO 4%	2883 (268)	721 (67)	320 (30)	180 (17)
CTO 100%	1336 (124)	334 (31)	148 (14)	84 (8)



Distance	m (ft in)	0	3 (9' 10")	6 (19' 8")	9 (29' 6")	12 (39' 4")
Diameter 10%	m (ft in)	0	2.41 (7' 11")	4.82 (15' 10")	7.24 (23' 9")	9.65 (31' 8")
Diameter 50%	m (ft in)	0	1.94 (6' 5")	3.89 (12' 9")	5.83 (19' 2")	7.78 (25' 6")

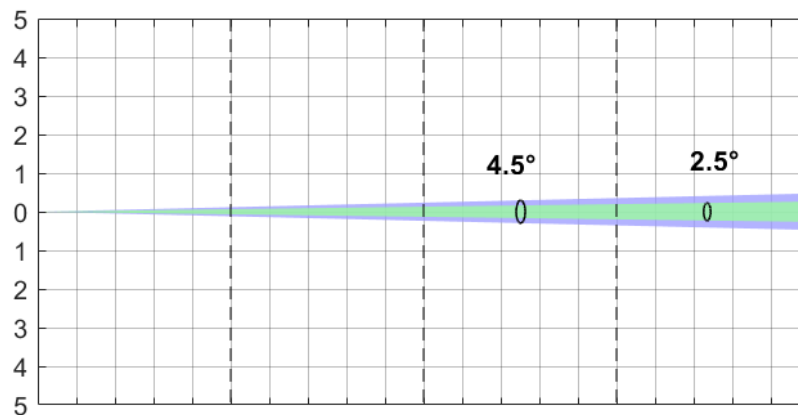
*Lumen values detected with integrating sphere. Measurements taken 15 minutes after the fixture was turned on.

FAN MODE: CONSTANT - ZOOM: MIN

Minimum Zoom - Constant Fan mode (4.5° 10% - 2.5° 50%)

Total Output: 2699 lumens

	Lux (fc)	Lux (fc)	Lux (fc)	Lux (fc)
Full Colour	102425 (9516)	25606 (2379)	11381 (1057)	6402 (595)
White	58939 (5476)	14735 (1369)	6549 (608)	3684 (342)
Red	25233 (2344)	6308 (586)	2804 (260)	1577 (147)
Green	36233 (3366)	9058 (842)	4026 (374)	2265 (210)
Blue	7522 (699)	1881 (175)	836 (78)	470 (44)
CTO 4%	97758 (9082)	24440 (2270)	10862 (1009)	6110 (568)
CTO 100%	45050 (4185)	11263 (1046)	5006 (465)	2816 (262)



Distance	m (ft in)	0	3 (9' 10")	6 (19' 8")	9 (29' 6")	12 (39' 4")
Diameter 10%	m (ft in)	0	0.23 (0' 9")	0.47 (1' 6")	0.70 (2' 4")	0.94 (3' 1")
Diameter 50%	m (ft in)	0	0.13 (0' 5")	0.26 (0' 10")	0.40 (1' 4")	0.53 (1' 9")

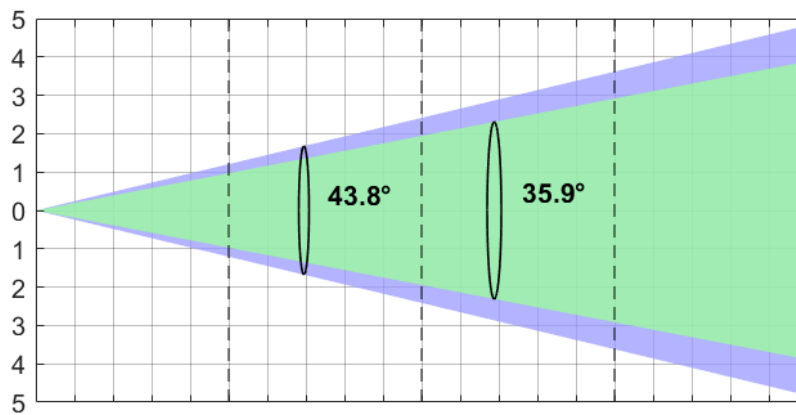
*Lumen values detected with integrating sphere. Measurements taken 15 minutes after the fixture was turned on.

FAN MODE: CONSTANT - ZOOM: MAX

Maximum Zoom - Constant Fan mode (43.8° 10% - 35.9° 50%)

Total Output: 3819 lumens

	Lux (fc)	Lux (fc)	Lux (fc)	Lux (fc)
Full Colour	1075 (100)	269 (25)	119 (11)	67 (6)
White	906 (84)	226 (21)	101 (9)	57 (5)
Red	397 (37)	99 (9)	44 (4)	25 (2)
Green	569 (53)	142 (13)	63 (6)	36 (3)
Blue	122 (11)	31 (3)	14 (1)	8 (1)
CTO 4%	2917 (271)	729 (68)	324 (30)	182 (17)
CTO 100%	1364 (127)	341 (32)	152 (14)	85 (8)



Distance	m (ft in)	0	3 (9' 10")	6 (19' 8")	9 (29' 6")	12 (39' 4")
Diameter 10%	m (ft in)	0	2.41 (7' 11")	4.82 (15' 10")	7.24 (23' 9")	9.65 (31' 8")
Diameter 50%	m (ft in)	0	1.94 (6' 5")	3.89 (12' 9")	5.83 (19' 2")	7.78 (25' 6")

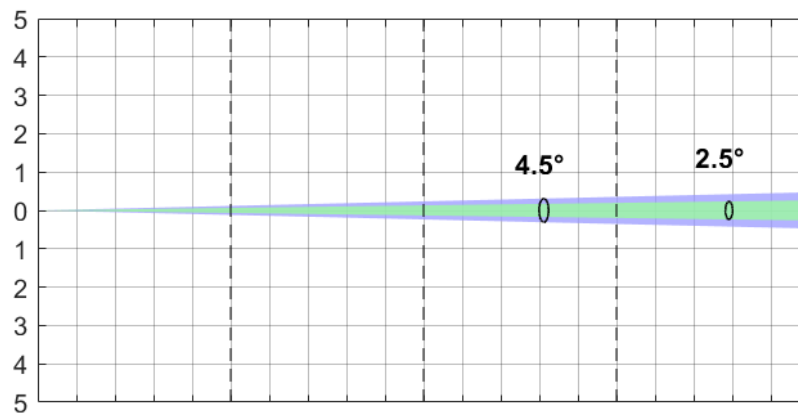
*Lumen values detected with integrating sphere. Measurements taken 15 minutes after the fixture was turned on.

FAN MODE: SILENT - ZOOM: MIN

Minimum Zoom - Silent Fan mode (4.5° 10% - 2.5° 50%)

Total Output: 2654 lumens

	Lux (fc)	Lux (fc)	Lux (fc)	Lux (fc)
Full Colour	102228 (9497)	25557 (2374)	11359 (1055)	6389 (594)
White	58664 (5450)	14666 (1363)	6518 (606)	3666 (341)
Red	24578 (2283)	6144 (571)	2731 (254)	1536 (143)
Green	35506 (3299)	8876 (825)	3945 (367)	2219 (206)
Blue	7272 (676)	1818 (169)	808 (75)	455 (42)
CTO 4%	97578 (9065)	24394 (2266)	10842 (1007)	6099 (567)
CTO 100%	43594 (4050)	10899 (1013)	4844 (450)	2725 (253)



Distance	m (ft in)	0	3 (9' 10")	6 (19' 8")	9 (29' 6")	12 (39' 4")
Diameter 10%	m (ft in)	0	0.23 (0' 9")	0.47 (1' 6")	0.70 (2' 4")	0.94 (3' 1")
Diameter 50%	m (ft in)	0	0.13 (0' 5")	0.26 (0' 10")	0.40 (1' 4")	0.53 (1' 9")

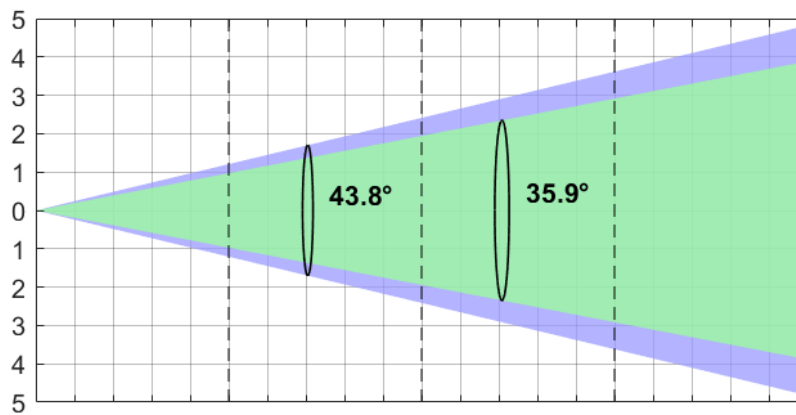
*Lumen values detected with integrating sphere. Measurements taken 15 minutes after the fixture was turned on.

FAN MODE: SILENT - ZOOM MAX

Maximum Zoom - Silent Fan mode (43.8° 10% - 35.9° 50%)

Total Output: 3716 lumens

	Lux (fc)	Lux (fc)	Lux (fc)	Lux (fc)
Full Colour	1056 (98)	264 (25)	117 (11)	66 (6)
White	875 (81)	219 (20)	97 (9)	55 (5)
Red	383 (36)	96 (9)	43 (4)	24 (2)
Green	567 (53)	142 (13)	63 (6)	35 (3)
Blue	119 (11)	30 (3)	13 (1)	7 (1)
CTO 4%	2853 (265)	713 (66)	317 (29)	178 (17)
CTO 100%	1347 (125)	337 (31)	150 (14)	84 (8)



Distance	m (ft in)	0	3 (9' 10")	6 (19' 8")	9 (29' 6")	12 (39' 4")
Diameter 10%	m (ft in)	0	2.41 (7' 11")	4.82 (15' 10")	7.24 (23' 9")	9.65 (31' 8")
Diameter 50%	m (ft in)	0	1.94 (6' 5")	3.89 (12' 9")	5.83 (19' 2")	7.78 (25' 6")

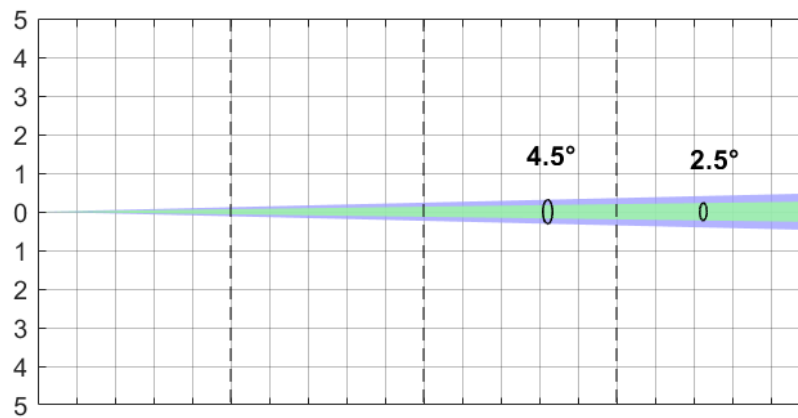
*Lumen values detected with integrating sphere. Measurements taken 15 minutes after the fixture was turned on.

FAN MODE: THEATRE - ZOOM: MIN

Minimum Zoom - Theatre Fan mode (4.5° 10% - 2.5° 50%)

Total Output: 1855 lumens

	Lux (fc)	Lux (fc)	Lux (fc)	Lux (fc)
Full Colour	69864 (6491)	17466 (1623)	7763 (721)	4366 (406)
White	36136 (3357)	9034 (839)	4015 (373)	2259 (210)
Red	16333 (1517)	4083 (379)	1815 (169)	1021 (95)
Green	21603 (2007)	5401 (502)	2400 (223)	1350 (125)
Blue	4178 (388)	1044 (97)	464 (43)	261 (24)
CTO 4%	64678 (6009)	16169 (1502)	7186 (668)	4042 (376)
CTO 100%	29367 (2728)	7342 (682)	3263 (303)	1835 (171)



Distance	m (ft in)	0	3 (9' 10")	6 (19' 8")	9 (29' 6")	12 (39' 4")
Diameter 10%	m (ft in)	0	0.23 (0' 9")	0.47 (1' 6")	0.70 (2' 4")	0.94 (3' 1")
Diameter 50%	m (ft in)	0	0.13 (0' 5")	0.26 (0' 10")	0.40 (1' 4")	0.53 (1' 9")

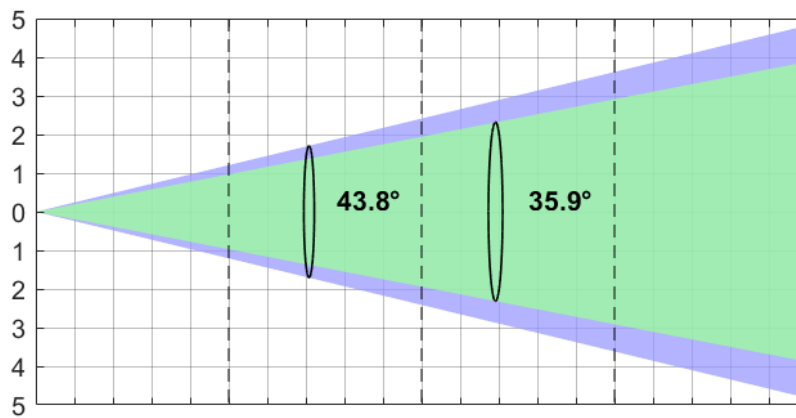
*Lumen values detected with integrating sphere. Measurements taken 15 minutes after the fixture was turned on.

FAN MODE: THEATRE - ZOOM: MAX

Maximum Zoom - Theatre Fan mode (43.8° 10% - 35.9° 50%)

Total Output: 2449 lumens

	Lux (fc)	Lux (fc)	Lux (fc)	Lux (fc)
Full Colour	692 (64)	173 (16)	77 (7)	43 (4)
White	536 (50)	134 (12)	60 (6)	34 (3)
Red	250 (23)	63 (6)	28 (3)	16 (1)
Green	350 (33)	88 (8)	39 (4)	22 (2)
Blue	69 (6)	17 (2)	8 (1)	4 (0)
CTO 4%	1753 (163)	438 (41)	195 (18)	110 (10)
CTO 100%	858 (80)	215 (20)	95 (9)	54 (5)



Distance	m (ft in)	0	3 (9' 10")	6 (19' 8")	9 (29' 6")	12 (39' 4")
Diameter 10%	m (ft in)	0	2.41 (7' 11")	4.82 (15' 10")	7.24 (23' 9")	9.65 (31' 8")
Diameter 50%	m (ft in)	0	1.94 (6' 5")	3.89 (12' 9")	5.83 (19' 2")	7.78 (25' 6")

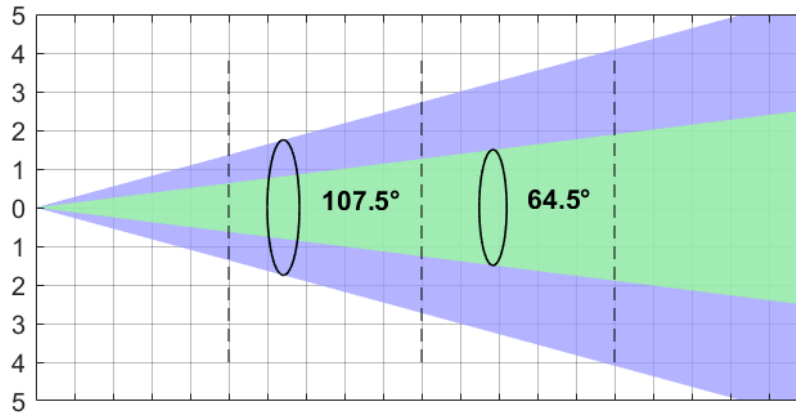
*Lumen values detected with integrating sphere. Measurements taken 15 minutes after the fixture was turned on.

STROBE - ZOOM: MIN

Graphical Strobe - Zoom MIN (107.5° 10% - 64.5° 50%)

Total Output: 7097 lumens

lux (fc) 0 2450 (228) 613 (57) 272 (25) 153 (14)



Distance	m (ft in)	0	1 (3' 3")	2 (6' 7")	3 (9' 10")	4 (13' 1")
Diameter 10%	m (ft in)	0	2.73 (8' 11")	5.46 (17' 11")	8.18 (26' 10")	10.91 (35' 10")
Diameter 50%	m (ft in)	0	1.26 (4' 2")	2.52 (8' 3")	3.79 (12' 5")	5.05 (16' 7")

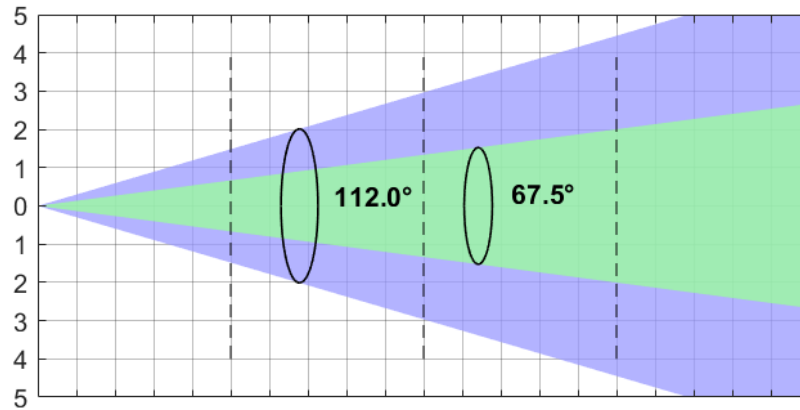
*Lumen values detected with integrating sphere. Measurements taken 15 minutes after the fixture was turned on.

STROBE - ZOOM: MAX

Graphical Strobe - Zoom MAX (112° 10% - 67.5° 50%)

Total Output: 8866 lumens

lux (fc) 0 2750 (255) 688 (64) 306 (28) 172 (16)



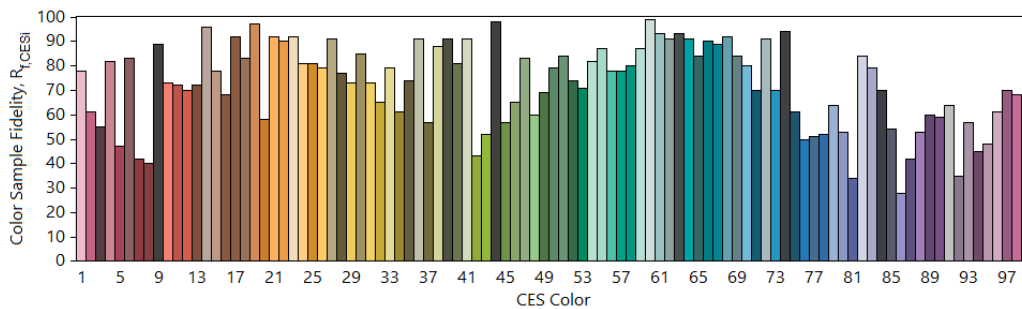
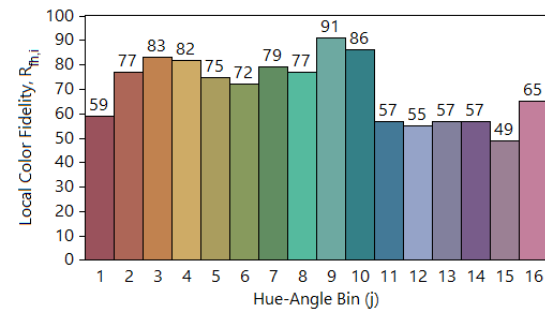
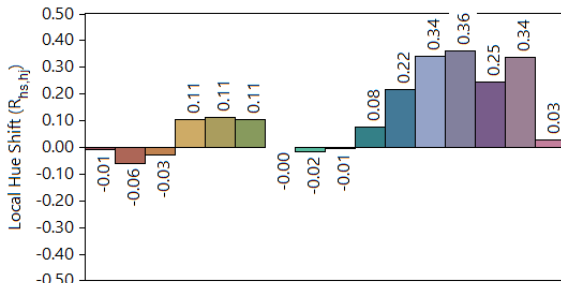
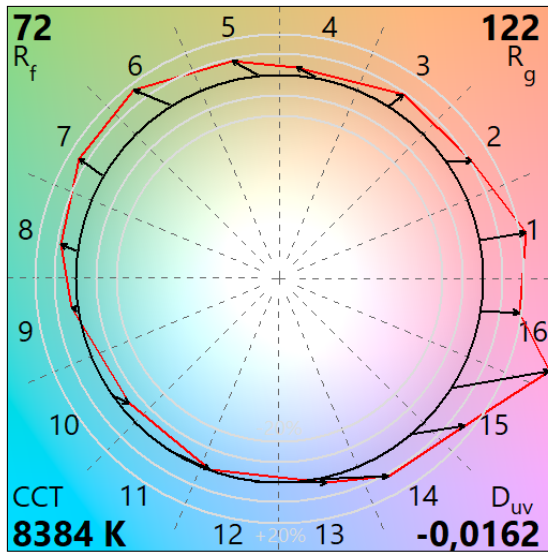
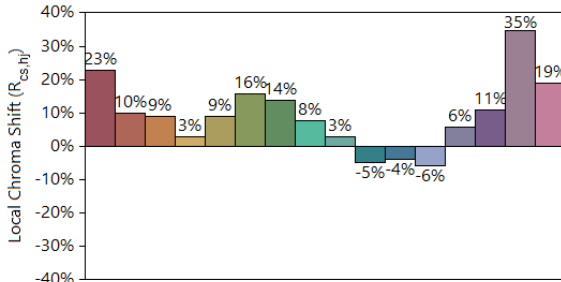
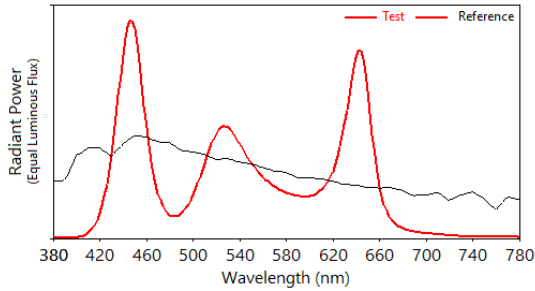
Distance	m (ft in)	0	1 (3' 3")	2 (6' 7")	3 (9' 10")	4 (13' 1")
Diameter 10%	m (ft in)	0	2.97 (9' 9")	5.93 (19' 6")	8.90 (29' 2")	11.86 (38' 11")
Diameter 50%	m (ft in)	0	1.34 (4' 5")	2.67 (8' 9")	4.01 (13' 2")	5.34 (17' 6")

*Lumen values detected with integrating sphere. Measurements taken 15 minutes after the fixture was turned on.

TM-30: FULL COLOR

IES TM-30-18 Color Rendition Report

Source: VOLERO CUBE Manufacturer: CLAY PAKY
 Date: 04.10.2024 Model: VOLERO CUBE



Notes: Full Colour

x 0,2993
 y 0,2802
 u' 0,2077
 v' 0,4375

CIE 13.3-1995
 (CRI)
 R_a 63
 R_g -96

Colors are for visual orientation purposes only.

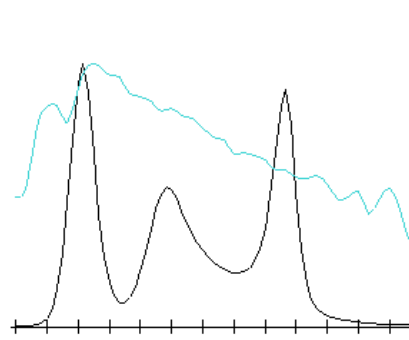
TLCI-2012: FULL COLOR

Direct spectrum input : CCT = D7433 (-4.0)

TLCI-2012 : 54 (D7433)



Sector	Lightness	Chroma	Hue
R	-----	---	0
R/Y	0	-	0
Y	0	-	-
Y/G	0	---	-
G	0	---	-
G/C	0	---	+++++
C	0	-	+++++
C/B	+	0	+++++
B	0	--	--
B/M	0	--	0
M	--	---	--
M/R	-----	---	-



TM-30: WHITE

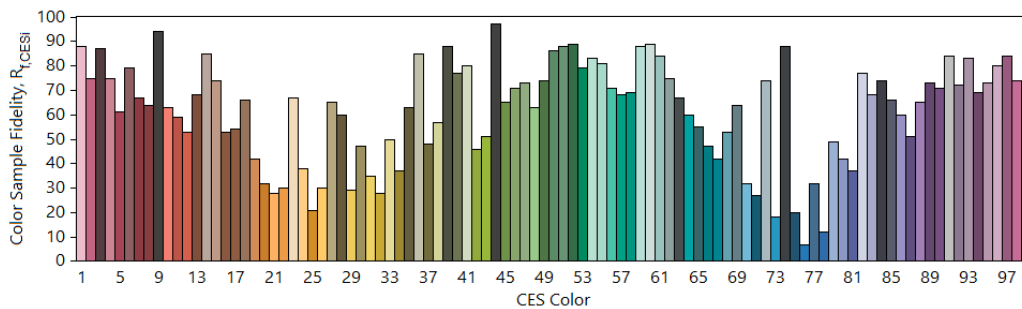
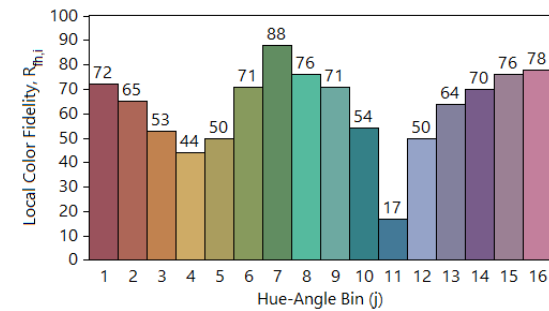
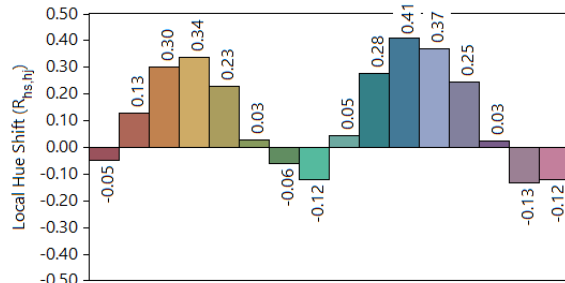
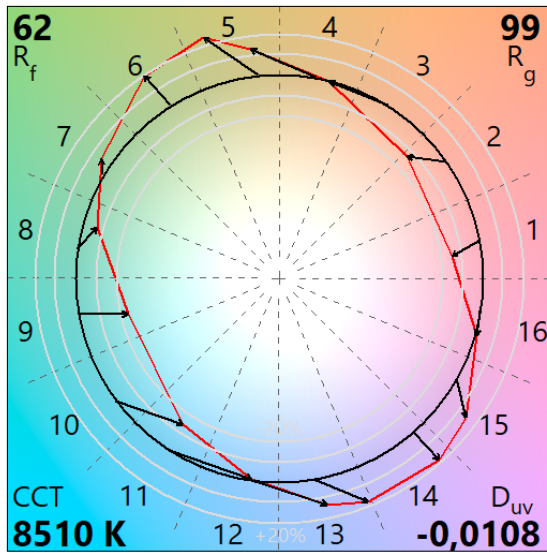
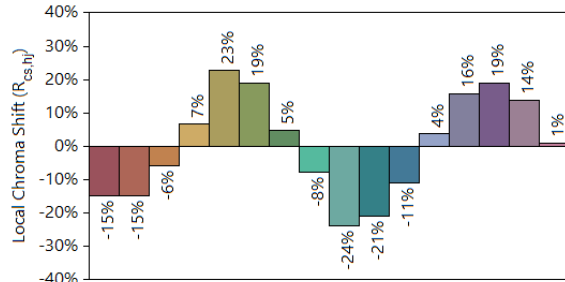
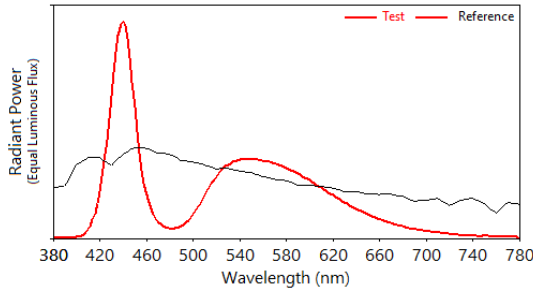
IES TM-30-18 Color Rendition Report

Source: VOLERO CUBE

Manufacturer: CLAY PAKY

Date: 04.11.2024

Model: VOLERO CUBE



Notes: White

x 0,2959
y 0,2860
u' 0,2027
v' 0,4407

CIE 13.3-1995
(CRI)
R_a 68
R_g 0

Colors are for visual orientation purposes only.

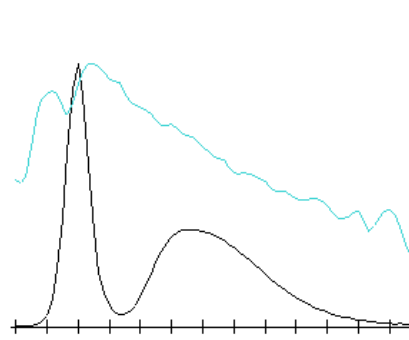
TLCI-2012: WHITE

Direct spectrum input : CCT = D8510 (-2.6)

TLCI-2012 : 40 (D8510)



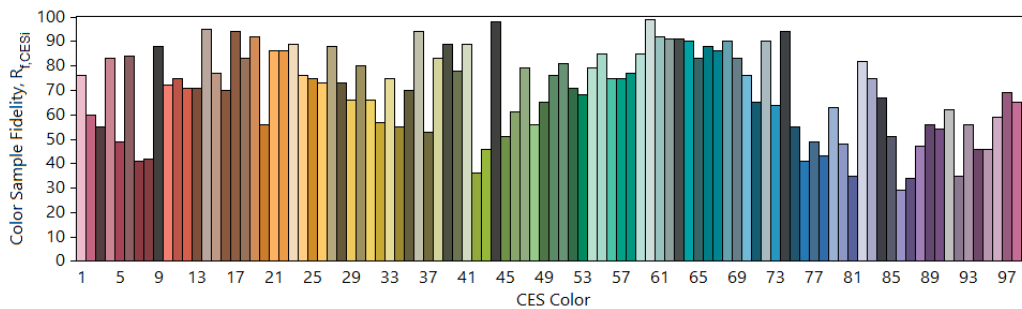
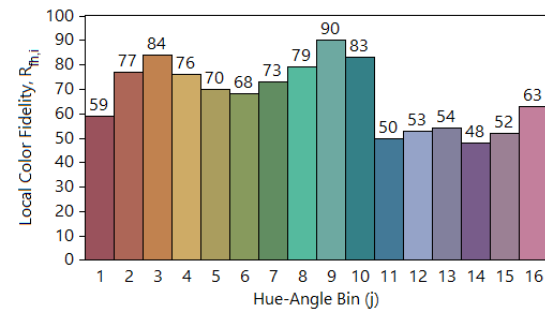
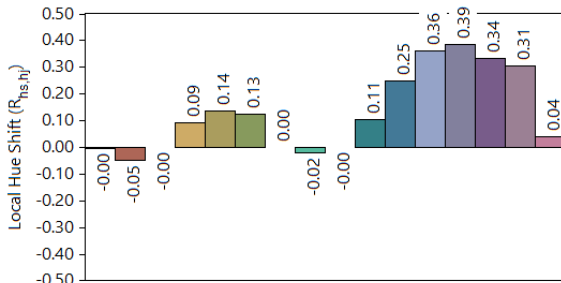
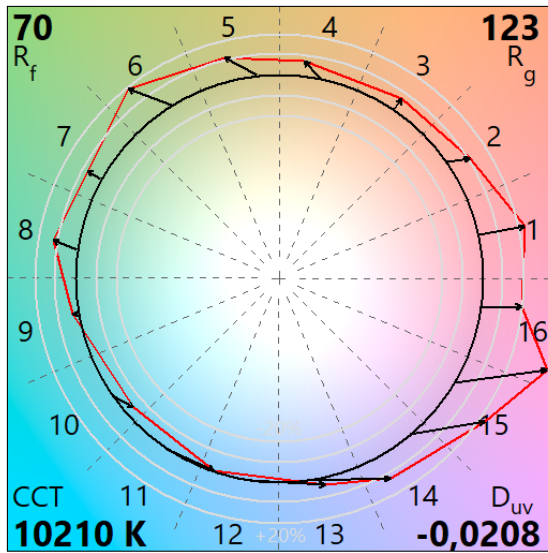
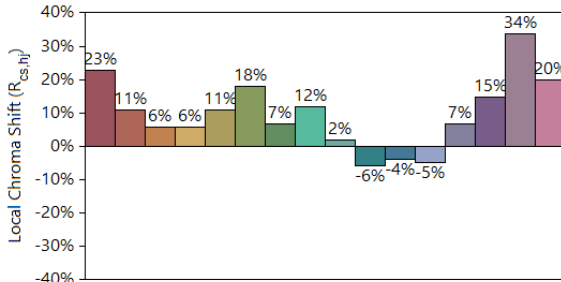
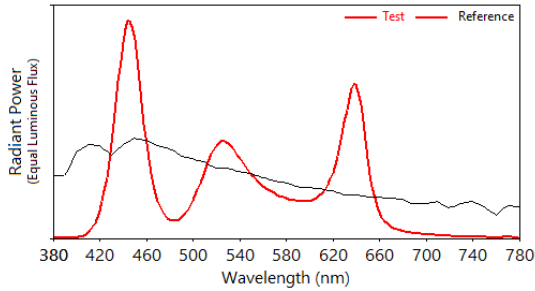
Sector	Lightness	Chroma	Hue
R	++++	+++	+
R/Y	0	0	-----
Y	--	---	-----
Y/G	-	---	0
G	--	---	++++
G/C	+	0	+++++++
C	+++	0	+
C/B	+++++	+	---
B	0	---	-----
B/M	+	---	++
M	++++	--	+++++++
M/R	++++	0	+++++



TM-30: CTO 4%

IES TM-30-18 Color Rendition Report

Source: VOLERO CUBE Manufacturer: CLAY PAKY
 Date: 04.11.2024 Model: VOLERO CUBE



Notes: CTO 4%

x 0,2917
 y 0,2642
 u' 0,2088
 v' 0,4256

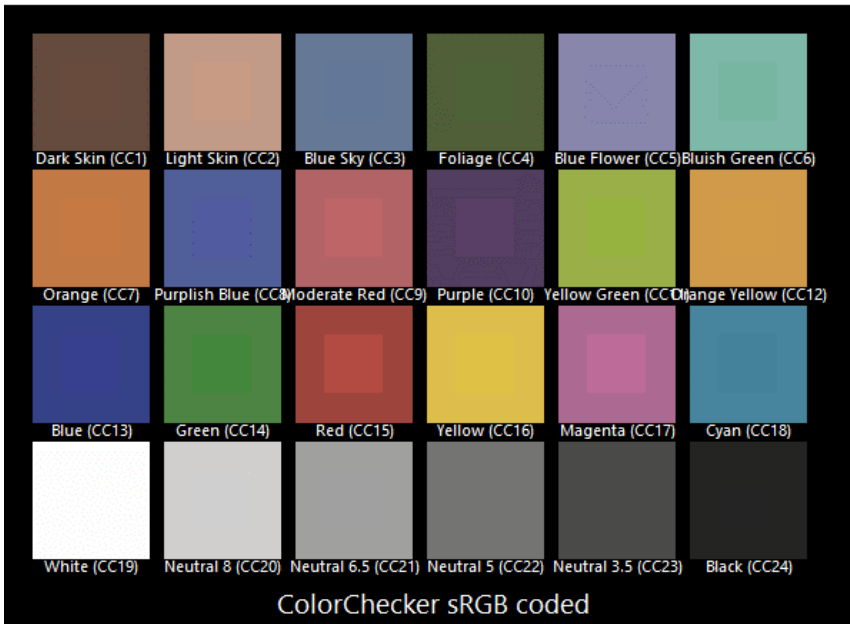
CIE 13.3-1995
 (CRI)
 R_a 61
 R_g -99

Colors are for visual orientation purposes only.

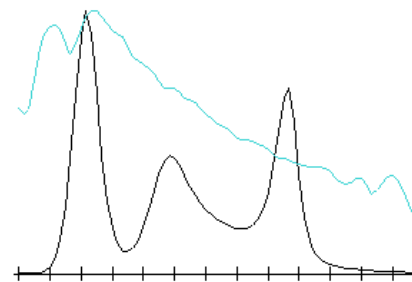
TLCI-2012: CTO 4%

Direct spectrum input : CCT = D10210 (-4.4)

TLCI-2012 : 54 (D10210)



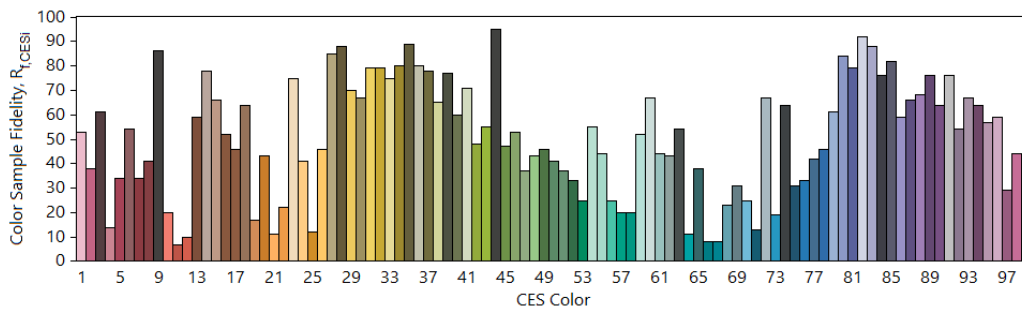
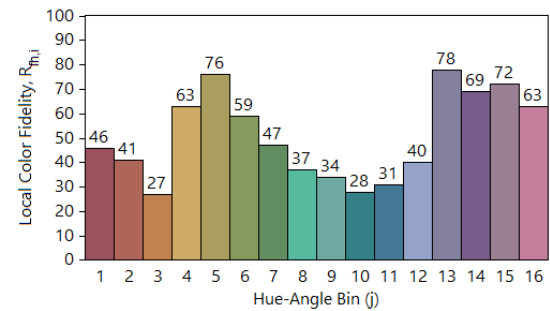
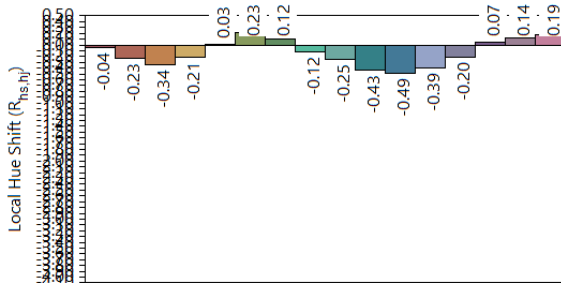
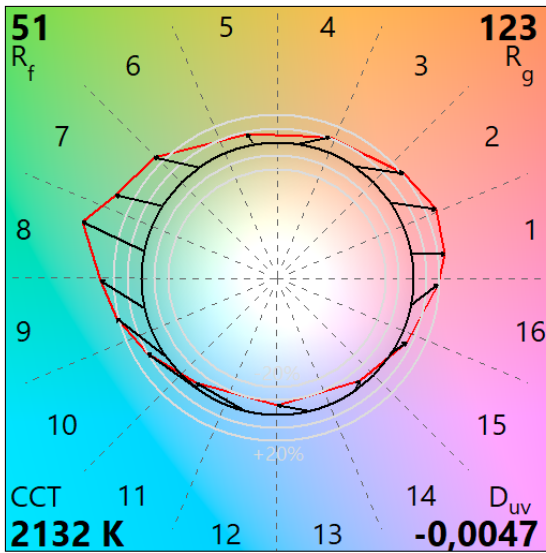
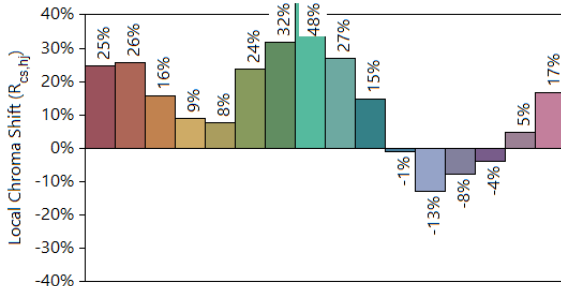
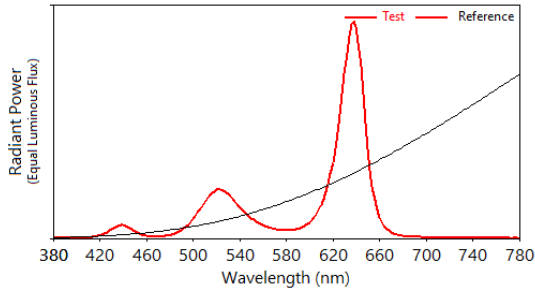
Sector	Lightness	Chroma	Hue
R	-----	---	0
R/Y	0	-	0
Y	0	-	-
Y/G	0	---	-
G	-	-----	-
G/C	+	-----	++++
C	+	-	+++
C/B	+	0	++
B	0	--	--
B/M	0	--	0
M	--	---	--
M/R	-----	---	--



TM-30: CTO 100%

IES TM-30-18 Color Rendition Report

Source: VOLERO CUBE Manufacturer: Clay Paky
 Date: 04.11.2024 Model: VOLERO CUBE



Notes: CTO 100%

x 0,5025
 y 0,4006
 u' 0,2955
 v' 0,5300

CIE 13.3-1995
 (CRI)
 Ra 23
 Rg -98

Colors are for visual orientation purposes only.

TLCI-2012: CTO 100%

Direct spectrum input : CCT = P2132 (-0.9)

TLCI-2012 : 13 (P2132)



Sector	Lightness	Chroma	Hue
R	--	--	+++
R/Y	+++++	+	N/A
Y	+++	+++	+++++
Y/G	+	+	--
G	0	-	---
G/C	0	--	---
C	--	-----	+++++
C/B	----	+	+++++
B	-	+++	++++
B/M	0	+++	+++++
M	--	--	0
M/R	--	--	+

