

# PHOTOMETRIC TEST REPORT



## FIXTURE DATA

**Manufacturer:** Clay Paky s.r.l.  
**Fixture model:** TAMBORA STORMY  
**Date:** 2024-11-21

## TABLE OF CONTENTS:

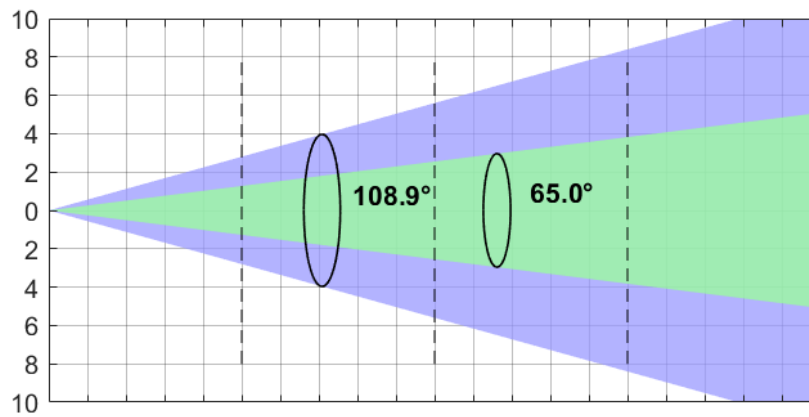
⇒ FAN MODE: AUTO	3
⇒ FAN MODE: CONSTANT	4
⇒ FAN MODE: SILENT	5
⇒ FAN MODE: THEATRE	6
⇒ TM-30: FULL COLOR	7
⇒ TLCI-2012: FULL COLOR	8
⇒ TM-30: WHITE	9
⇒ TLCI-2012: WHITE	10
⇒ TM-30: CTO 4%	11
⇒ TLCI-2012: CTO 4%	12
⇒ TM-30: CTO 100%	13
⇒ TLCI-2012: CTO 100%	14

## FAN MODE: AUTO

### Auto Fan mode (108.9° 10% - 65° 50%)

**Total Output: 40290 lumens**

	Lux (fc)	Lux (fc)	Lux (fc)	Lux (fc)
Full Colour	3447 (320)	862 (80)	383 (36)	215 (20)
Red	650 (60)	163 (15)	72 (7)	41 (4)
Green	1462 (136)	365 (34)	162 (15)	91 (8)
Blue	244 (23)	61 (6)	27 (3)	15 (1)
White	3122 (290)	780 (72)	347 (32)	195 (18)
CTO 4%	2498 (232)	624 (58)	278 (26)	156 (15)
CTO 100%	2126 (198)	532 (49)	236 (22)	133 (12)



Distance	m (ft in)	0	2 (6' 7")	4 (13' 1")	6 (19' 8")	8 (26' 3")
Diameter 10%	m (ft in)	0	5.60 (18' 4")	11.20 (36' 9")	16.80 (55' 1")	22.40 (73' 6")
Diameter 50%	m (ft in)	0	2.54 (8' 4")	5.08 (16' 8")	7.62 (25' 0")	10.16 (33' 4")

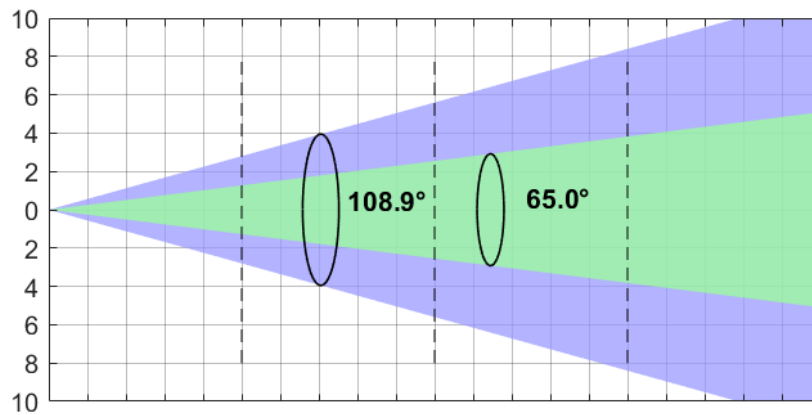
\*Lumen values detected with integrating sphere. Measurements taken 15 minutes after the fixture was turned on.

## FAN MODE: CONSTANT

### Constant Fan mode (108.9° 10% - 65° 50%)

**Total Output: 40060 lumens**

	Lux (fc)	Lux (fc)	Lux (fc)	Lux (fc)
Full Colour	3429 (319)	857 (80)	381 (35)	214 (20)
Red	654 (61)	164 (15)	73 (7)	41 (4)
Green	1511 (140)	378 (35)	168 (16)	94 (9)
Blue	244 (23)	61 (6)	27 (3)	15 (1)
White	3142 (292)	785 (73)	349 (32)	196 (18)
CTO 4%	2620 (243)	655 (61)	291 (27)	164 (15)
CTO 100%	2128 (198)	532 (49)	236 (22)	133 (12)



Distance	m (ft in)	0	2 (6' 7")	4 (13' 1")	6 (19' 8")	8 (26' 3")
Diameter 10%	m (ft in)	0	5.60 (18' 4")	11.20 (36' 9")	16.80 (55' 1")	22.40 (73' 6")
Diameter 50%	m (ft in)	0	2.54 (8' 4")	5.08 (16' 8")	7.62 (25' 0")	10.16 (33' 4")

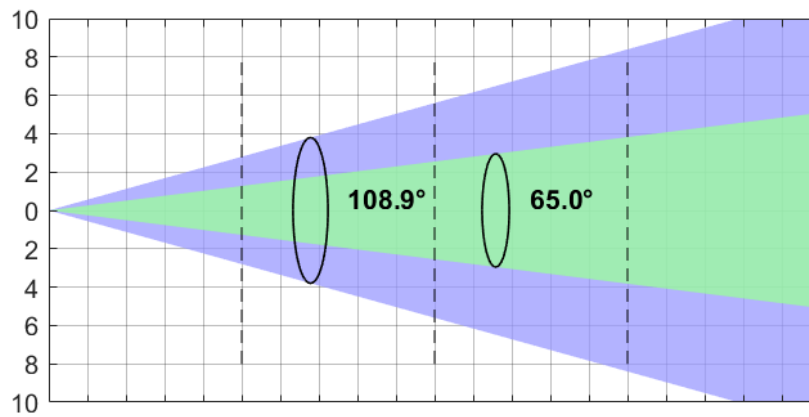
\*Lumen values detected with integrating sphere. Measurements taken 15 minutes after the fixture was turned on.

## FAN MODE: SILENT

### Silent Fan mode (108.9° 10% - 65° 50%)

**Total Output: 41367 lumens**

	Lux (fc)	Lux (fc)	Lux (fc)	Lux (fc)
Full Colour	3539 (329)	885 (82)	393 (37)	221 (21)
Red	454 (42)	114 (11)	50 (5)	28 (3)
Green	1042 (97)	260 (24)	116 (11)	65 (6)
Blue	171 (16)	43 (4)	19 (2)	11 (1)
White	2374 (221)	593 (55)	264 (25)	148 (14)
CTO 4%	1675 (156)	419 (39)	186 (17)	105 (10)
CTO 100%	1373 (128)	343 (32)	153 (14)	86 (8)



Distance	m (ft in)	0	2 (6' 7")	4 (13' 1")	6 (19' 8")	8 (26' 3")
Diameter 10%	m (ft in)	0	5.60 (18' 4")	11.20 (36' 9")	16.80 (55' 1")	22.40 (73' 6")
Diameter 50%	m (ft in)	0	2.54 (8' 4")	5.08 (16' 8")	7.62 (25' 0")	10.16 (33' 4")

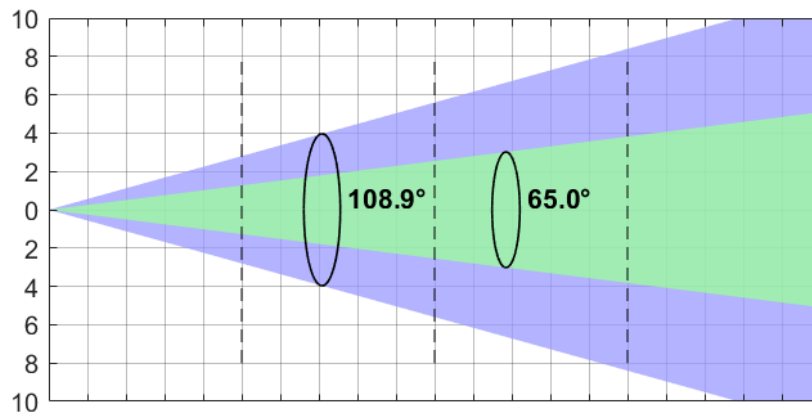
\*Lumen values detected with integrating sphere. Measurements taken 15 minutes after the fixture was turned on.

## FAN MODE: THEATRE

### Theatre Fan mode (108.9° 10% - 65° 50%)

**Total Output: 20844 lumens**

	Lux (fc)	Lux (fc)	Lux (fc)	Lux (fc)
Full Colour	1784 (166)	446 (41)	198 (18)	112 (10)
Red	358 (33)	90 (8)	40 (4)	22 (2)
Green	813 (75)	203 (19)	90 (8)	51 (5)
Blue	122 (11)	30 (3)	14 (1)	8 (1)
White	1609 (150)	402 (37)	179 (17)	101 (9)
CTO 4%	1677 (156)	419 (39)	186 (17)	105 (10)
CTO 100%	1374 (128)	344 (32)	153 (14)	86 (8)



Distance	m (ft in)	0	2 (6' 7")	4 (13' 1")	6 (19' 8")	8 (26' 3")
Diameter 10%	m (ft in)	0	5.60 (18' 4")	11.20 (36' 9")	16.80 (55' 1")	22.40 (73' 6")
Diameter 50%	m (ft in)	0	2.54 (8' 4")	5.08 (16' 8")	7.62 (25' 0")	10.16 (33' 4")

\*Lumen values detected with integrating sphere. Measurements taken 15 minutes after the fixture was turned on.

# TM-30: FULL COLOR

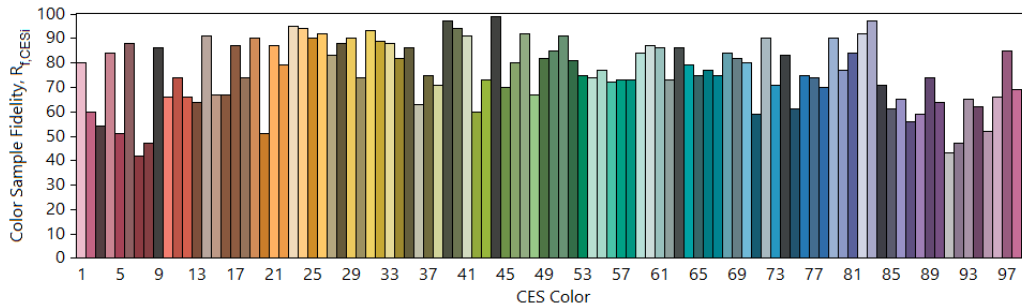
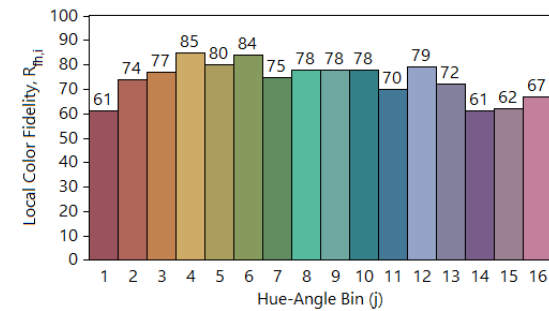
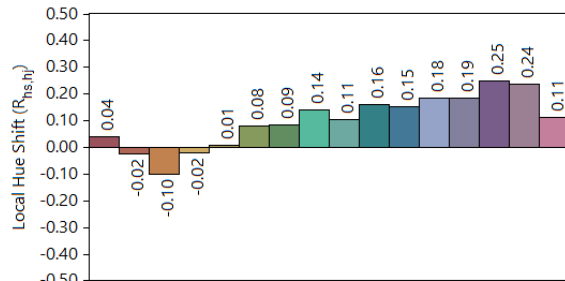
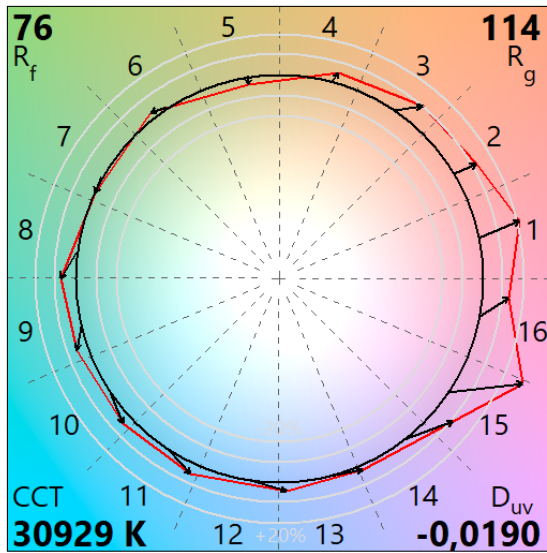
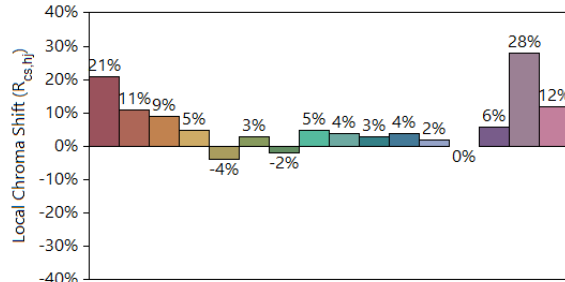
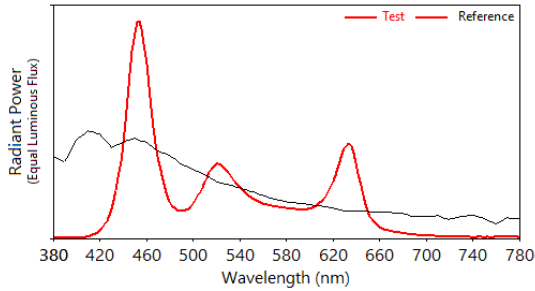
## IES TM-30-18 Color Rendition Report

Source: TAMBORA STORMY

Manufacturer: CLAY PAKY

Date: 06.11.2024

Model: TAMBORA STORMY



Notes: Full Color

x 0,2651  
y 0,2350  
u' 0,2005  
v' 0,3999

CIE 13.3-1995  
(CRI)  
R<sub>a</sub> N/A  
R<sub>g</sub> -95

Colors are for visual orientation purposes only.

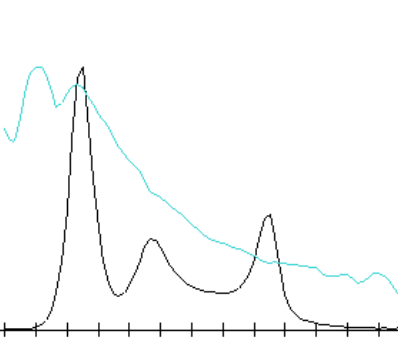
# TLCI-2012: FULL COLOR

Direct spectrum input : CCT = D30929 (-3.5)

TLCI-2012 : 65 (D30929)



Sector	Lightness	Chroma	Hue
R	----	---	0
R/Y	0	-	0
Y	0	-	0
Y/G	0	--	-
G	0	---	-
G/C	0	--	0
C	0	-	0
C/B	0	-	-
B	0	--	0
B/M	0	-	-
M	0	0	--
M/R	----	--	----





# TM-30: WHITE

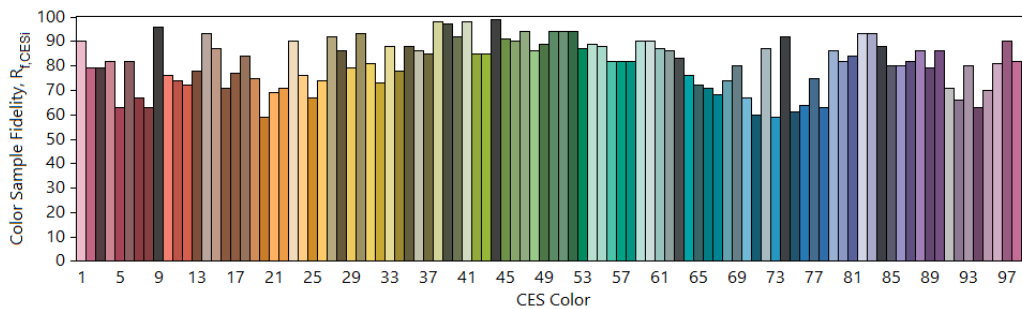
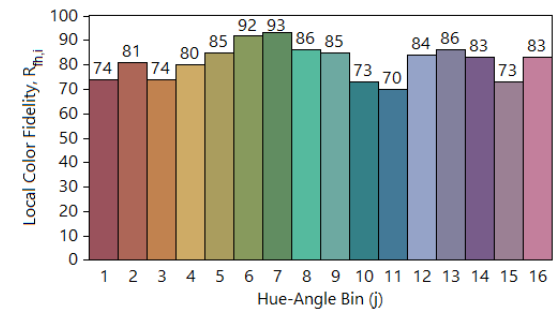
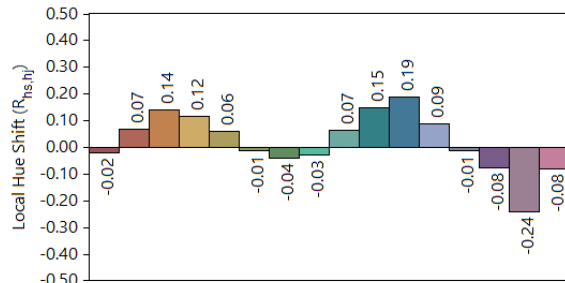
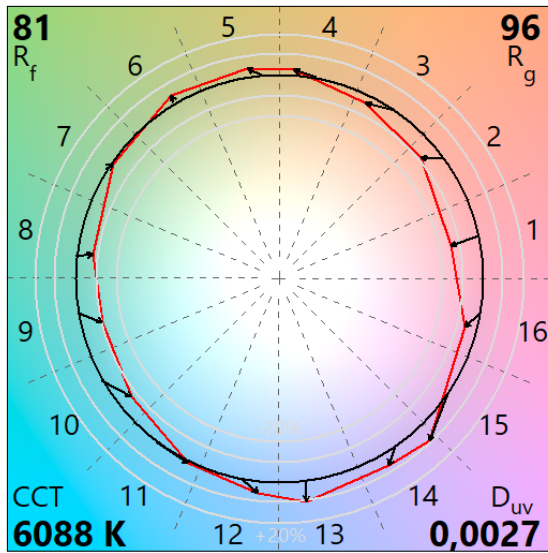
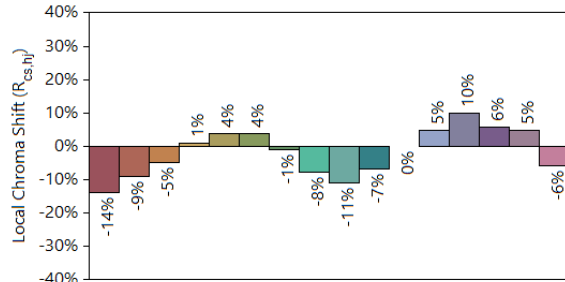
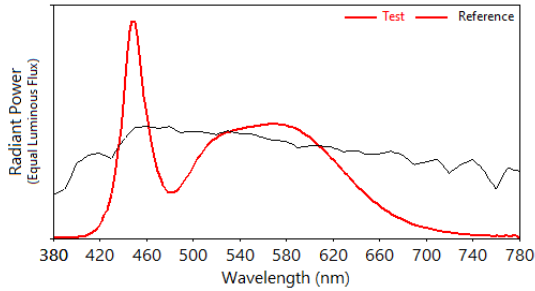
## IES TM-30-18 Color Rendition Report

Source: TAMBORA STORMY

Manufacturer: CLAY PAKY

Date: 06.11.2024

Model: TAMBORA STORMY



Notes: White

x 0,3201  
y 0,3351  
u' 0,2006  
v' 0,4726

CIE 13.3-1995  
(CRI)  
R<sub>a</sub> 80  
R<sub>g</sub> -4

Colors are for visual orientation purposes only.

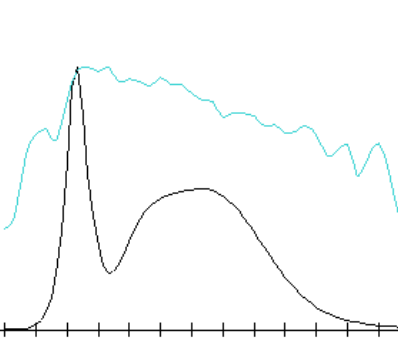
# TLCI-2012: WHITE

Direct spectrum input : CCT = D6088 (-0.1)

TLCI-2012 : 63 (D6088)



Sector	Lightness	Chroma	Hue
R	++++	++	+
R/Y	0	0	---
Y	0	-	--
Y/G	0	-	0
G	-	0	++
G/C	0	0	++
C	+	0	0
C/B	++	0	---
B	0	--	-
B/M	++	-	+++++
M	+++	0	+++++
M/R	++++	0	+++++



# TM-30: CTO 4%

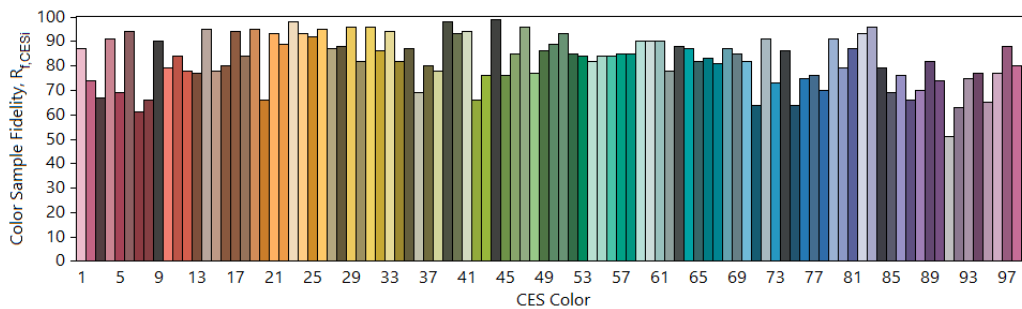
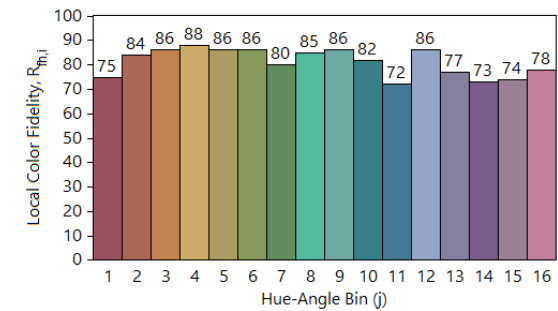
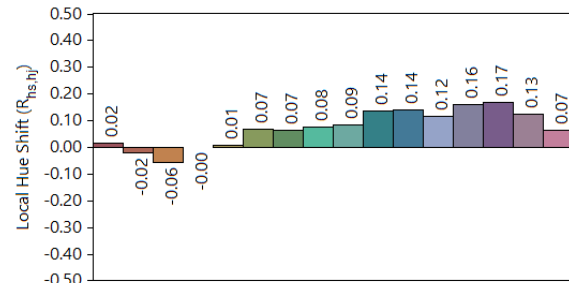
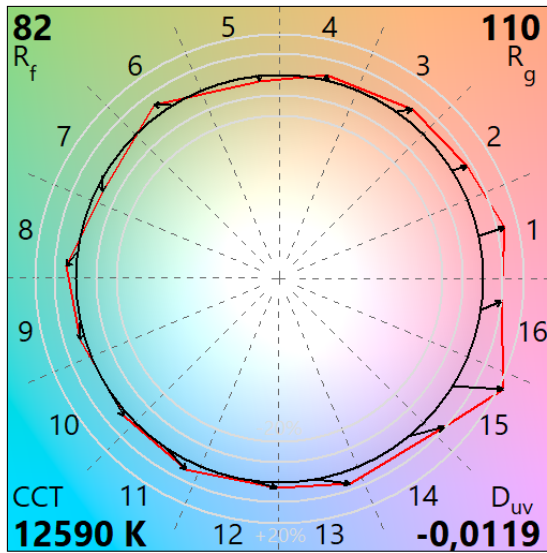
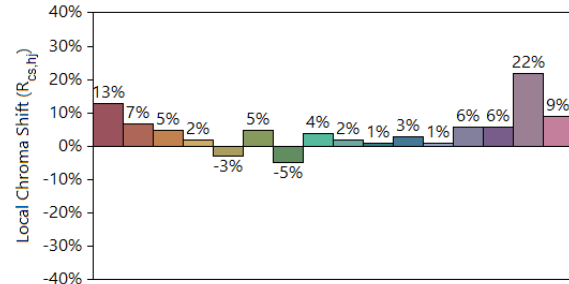
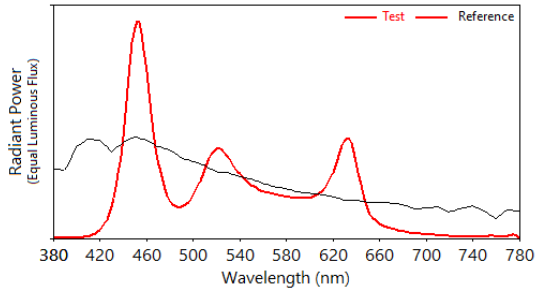
## IES TM-30-18 Color Rendition Report

Source: TAMBORA STORMY

Manufacturer: CLAY PAKY

Date: 06.11.2024

Model: TAMBORA STORMY



Notes: CTO 4%

x 0,2780  
y 0,2634  
u' 0,1984  
v' 0,4230

CIE 13.3-1995  
(CRI)  
R<sub>a</sub> 78  
R<sub>g</sub> -23

Colors are for visual orientation purposes only.

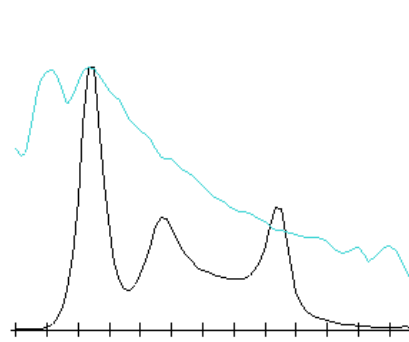
# TLCI-2012: CTO 4%

Direct spectrum input : CCT = D12590 (-2.8)

TLCI-2012 : 83 (D12590)



Sector	Lightness	Chroma	Hue
R	---	--	0
R/Y	0	0	0
Y	0	-	0
Y/G	0	-	-
G	0	--	0
G/C	0	--	+
C	0	-	0
C/B	0	0	0
B	0	--	0
B/M	0	0	0
M	-	0	-
M/R	--	-	--



# TM-30: CTO 100%

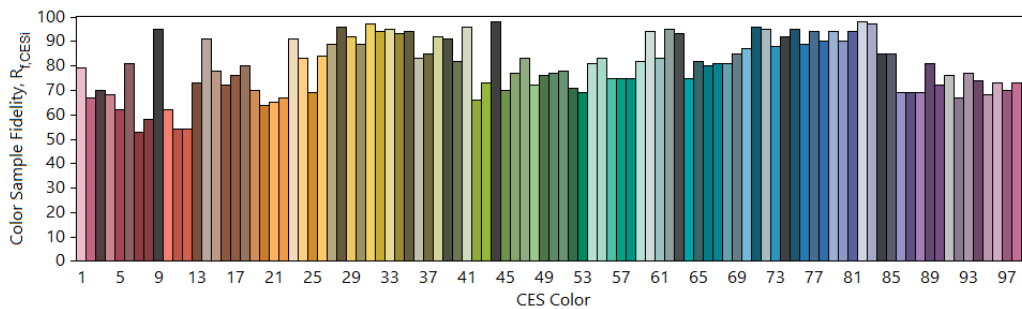
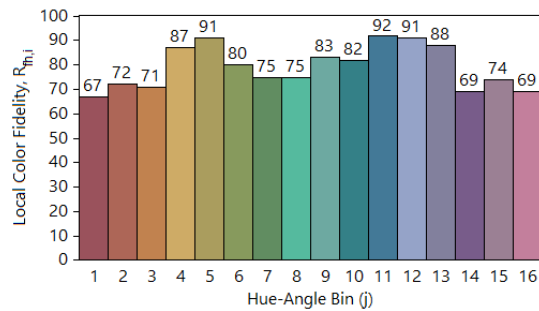
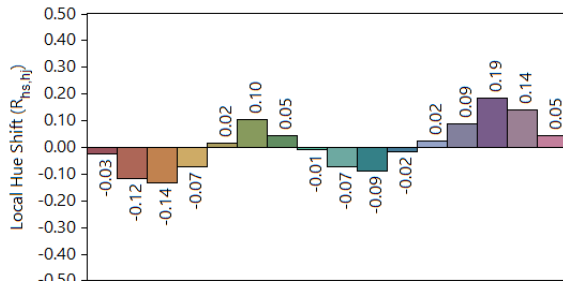
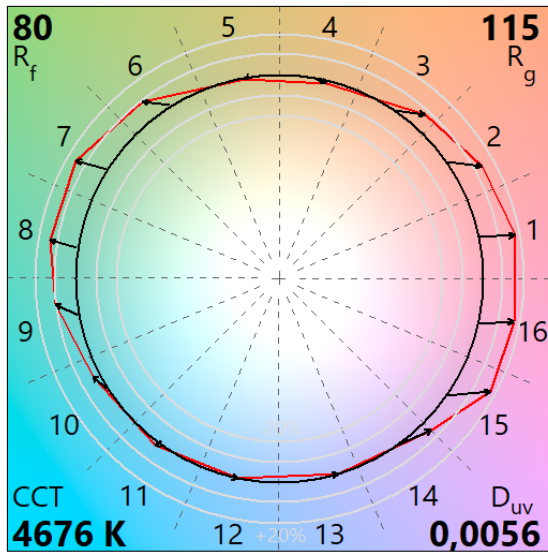
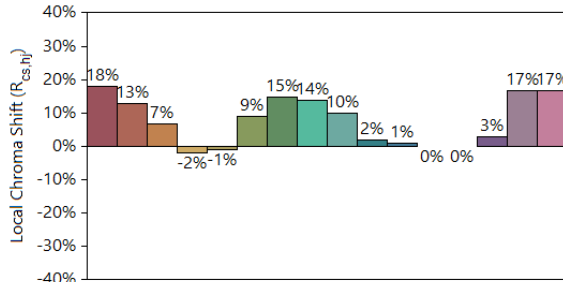
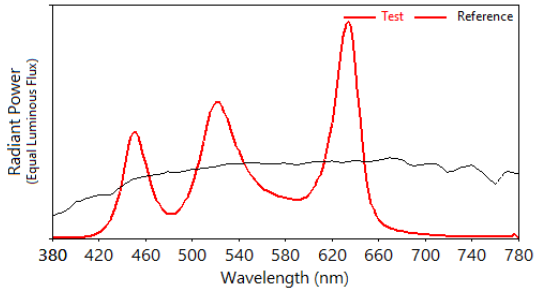
## IES TM-30-18 Color Rendition Report

Source: TAMBORA STORMY

Manufacturer: CLAY PAKY

Date: 06.11.2024

Model: TAMBORA STORMY



Notes: CTO 100%

x 0,3568  
y 0,3721  
u' 0,2114  
v' 0,4960

CIE 13.3-1995  
(CRI)  
Ra 68  
Rg -45

Colors are for visual orientation purposes only.

# TLCI-2012: CTO 100%

Direct spectrum input : CCT = M4676 (+1.3)

TLCI-2012 : 51 (M4676)



Sector	Lightness	Chroma	Hue
R	--	--	++
R/Y	0	0	++
Y	0	0	++
Y/G	0	0	--
G	0	--	-
G/C	0	----	+++++
C	-	--	+++++
C/B	--	0	+++++
B	0	0	+
B/M	0	0	0
M	-	-	-
M/R	----	--	----

