

PHOTOMETRIC TEST REPORT



FIXTURE DATA

Manufacturer: Clay Paky s.r.l.
Fixture model: TAMBORA RAYS
Date: 2024-11-20

TABLE OF CONTENTS:

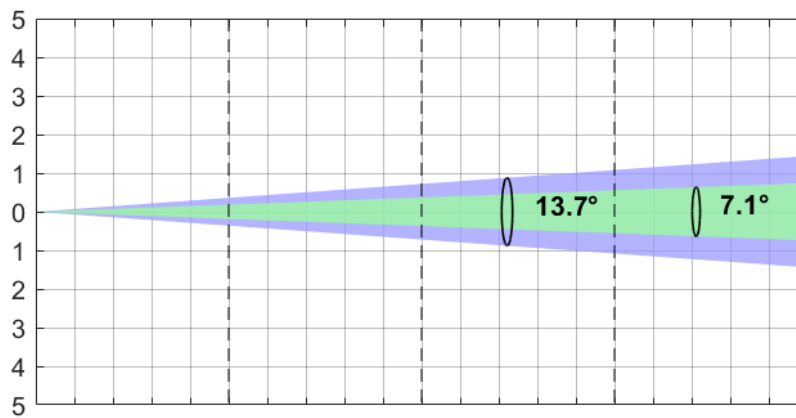
⇒ FAN MODE: AUTO	3
⇒ FAN MODE: CONSTANT	4
⇒ FAN MODE: SILENT	5
⇒ FAN MODE: THEATRE	6
⇒ TM-30: FULL COLOR	7
⇒ TLCI-2012: FULL COLOR	8
⇒ TM-30: WHITE	9
⇒ TLCI-2021: WHITE	10
⇒ TM-30: CTO 4%	11
⇒ TLCI-2012: CTO 4%	12
⇒ TM-30: CTO 100%	13
⇒ TLCI-2012: CTO 100%	14

FAN MODE: AUTO

Auto Fan mode (13.7° 10% - 7.1° 50%)

Total Output: 23035 lumens

	Lux (fc)	Lux (fc)	Lux (fc)	Lux (fc)
Full Colour	92147 (8561)	23037 (2140)	10239 (951)	5759 (535)
Red	17813 (1655)	4453 (414)	1979 (184)	1113 (103)
Green	37621 (3495)	9405 (874)	4180 (388)	2351 (218)
Blue	7187 (668)	1797 (167)	799 (74)	449 (42)
White	48280 (4485)	12070 (1121)	5364 (498)	3017 (280)
CTO 4%	50738 (4714)	12685 (1178)	5638 (524)	3171 (295)
CTO 100%	36542 (3395)	9135 (849)	4060 (377)	2284 (212)



Distance	m (ft in)	0	3 (9' 10")	6 (19' 8")	9 (29' 6")	12 (39' 4")
Diameter 10%	m (ft in)	0	0.72 (2' 4")	1.44 (4' 9")	2.16 (7' 1")	2.88 (9' 5")
Diameter 50%	m (ft in)	0	0.37 (1' 3")	0.74 (2' 5")	1.11 (3' 8")	1.47 (4' 10")

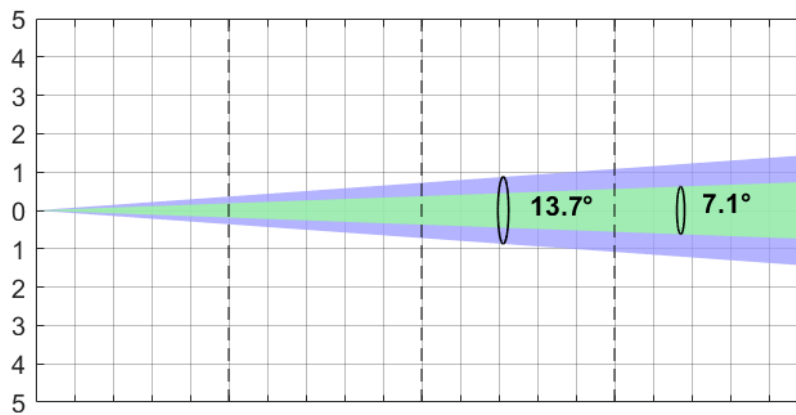
*Lumen values detected with integrating sphere. Measurements taken 15 minutes after the fixture was turned on.

FAN MODE: CONSTANT

Constant Fan mode (13.7° 10% - 7.1° 50%)

Total Output: 23702 lumens

	Lux (fc)	Lux (fc)	Lux (fc)	Lux (fc)
Full Colour	92964 (8637)	23241 (2159)	10329 (960)	5810 (540)
Red	19898 (1849)	4975 (462)	2211 (205)	1244 (116)
Green	40923 (3802)	10231 (950)	4547 (422)	2558 (238)
Blue	6827 (634)	1707 (159)	759 (70)	427 (40)
White	50783 (4718)	12696 (1179)	5643 (524)	3174 (295)
CTO 4%	54197 (5035)	13549 (1259)	6022 (559)	3387 (315)
CTO 100%	39769 (3695)	9942 (924)	4419 (411)	2486 (231)



Distance	m (ft in)	0	3 (9' 10")	6 (19' 8")	9 (29' 6")	12 (39' 4")
Diameter 10%	m (ft in)	0	0.72 (2' 4")	1.44 (4' 9")	2.16 (7' 1")	2.88 (9' 5")
Diameter 50%	m (ft in)	0	0.37 (1' 3")	0.74 (2' 5")	1.11 (3' 8")	1.47 (4' 10")

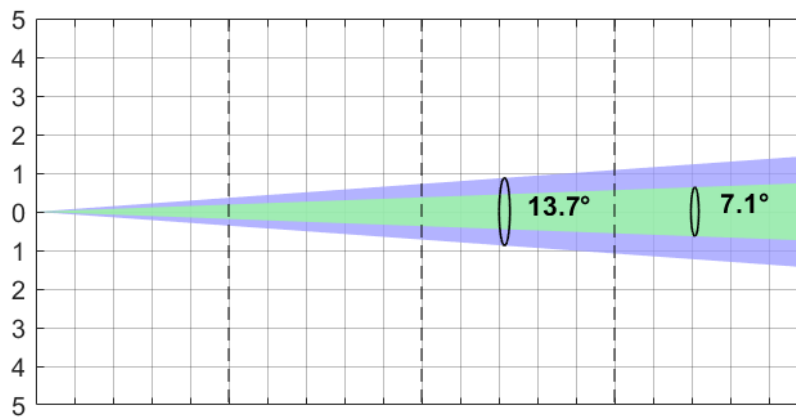
*Lumen values detected with integrating sphere. Measurements taken 15 minutes after the fixture was turned on.

FAN MODE: SILENT

Silent Fan mode (13.7° 10% - 7.1° 50%)

Total Output: 22749 lumens

	Lux (fc)	Lux (fc)	Lux (fc)	Lux (fc)
Full Colour	90242 (8384)	22560 (2096)	10027 (932)	5640 (524)
Red	13970 (1298)	3493 (324)	1552 (144)	873 (81)
Green	25624 (2381)	6406 (595)	2847 (265)	1602 (149)
Blue	4723 (439)	1181 (110)	525 (49)	295 (27)
White	35084 (3259)	8771 (815)	3898 (362)	2193 (204)
CTO 4%	38756 (3601)	9689 (900)	4306 (400)	2422 (225)
CTO 100%	25149 (2336)	6287 (584)	2794 (260)	1572 (146)



Distance	m (ft in)	0	3 (9' 10")	6 (19' 8")	9 (29' 6")	12 (39' 4")
Diameter 10%	m (ft in)	0	0.72 (2' 4")	1.44 (4' 9")	2.16 (7' 1")	2.88 (9' 5")
Diameter 50%	m (ft in)	0	0.37 (1' 3")	0.74 (2' 5")	1.11 (3' 8")	1.47 (4' 10")

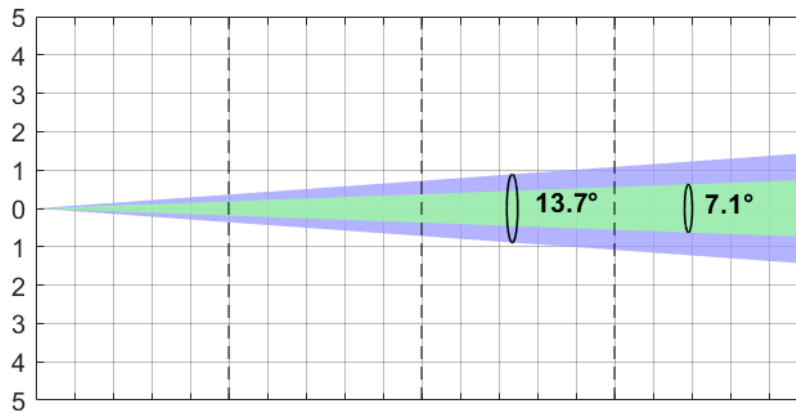
*Lumen values detected with integrating sphere. Measurements taken 15 minutes after the fixture was turned on.

FAN MODE: THEATRE

Theatre Fan mode (13.7° 10% - 7.1° 50%)

Total Output: 12241 lumens

	Lux (fc)	Lux (fc)	Lux (fc)	Lux (fc)
Full Colour	47911 (4451)	11978 (1113)	5323 (495)	2994 (278)
Red	11749 (1092)	2937 (273)	1305 (121)	734 (68)
Green	23362 (2170)	5841 (543)	2596 (241)	1460 (136)
Blue	3936 (366)	984 (91)	437 (41)	246 (23)
White	29815 (2770)	7454 (692)	3313 (308)	1863 (173)
CTO 4%	40209 (3735)	10052 (934)	4468 (415)	2513 (233)
CTO 100%	25012 (2324)	6253 (581)	2779 (258)	1563 (145)



Distance	m (ft in)	0	3 (9' 10")	6 (19' 8")	9 (29' 6")	12 (39' 4")
Diameter 10%	m (ft in)	0	0.72 (2' 4")	1.44 (4' 9")	2.16 (7' 1")	2.88 (9' 5")
Diameter 50%	m (ft in)	0	0.37 (1' 3")	0.74 (2' 5")	1.11 (3' 8")	1.47 (4' 10")

*Lumen values detected with integrating sphere. Measurements taken 15 minutes after the fixture was turned on.

TM-30: FULL COLOR

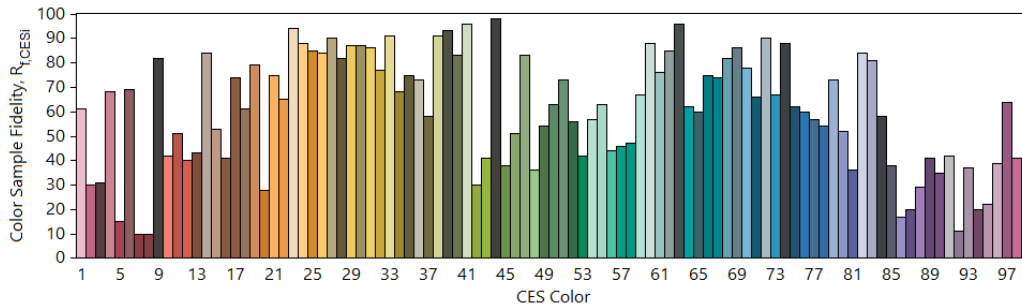
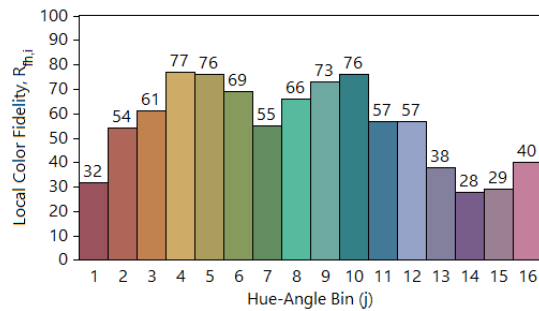
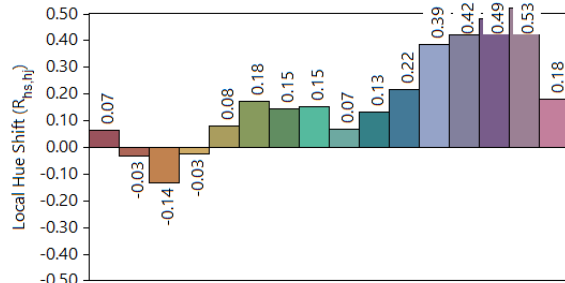
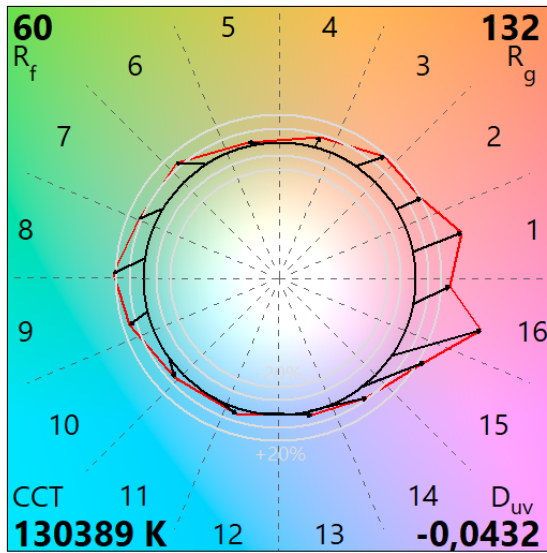
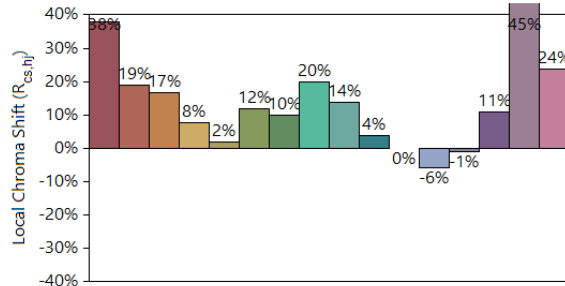
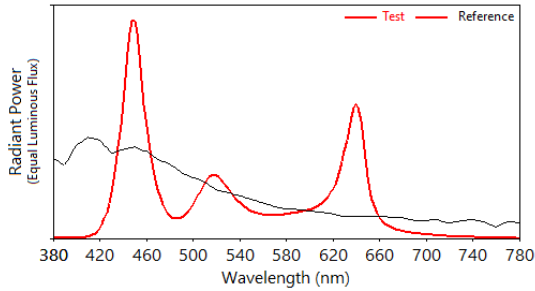
IES TM-30-18 Color Rendition Report

Source: TAMBORA RAYS

Manufacturer: CLAY PAKY

Date: 06.11.2024

Model: TAMBORA RAYS



Notes: Full Color

x 0,2772
y 0,2117
u' 0,2224
v' 0,3822

CIE 13.3-1995
(CRI)
Ra N/A
Rg -259

Colors are for visual orientation purposes only.

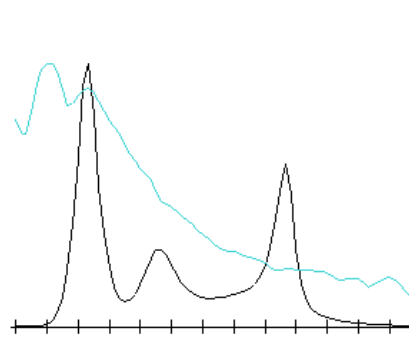
TLCI-2012: FULL COLOR

Direct spectrum input : CCT = D130389 (-8.0)

TLCI-2012 : 38 (D130389)



Sector	Lightness	Chroma	Hue
R	-----	---	0
R/Y	-	--	+
Y	0	-	+
Y/G	0	--	-
G	0	----	--
G/C	+	----	+
C	0	--	++
C/B	0	-	++
B	0	--	0
B/M	-	-	--
M	--	-	----
M/R	-----	---	----



TM-30: WHITE

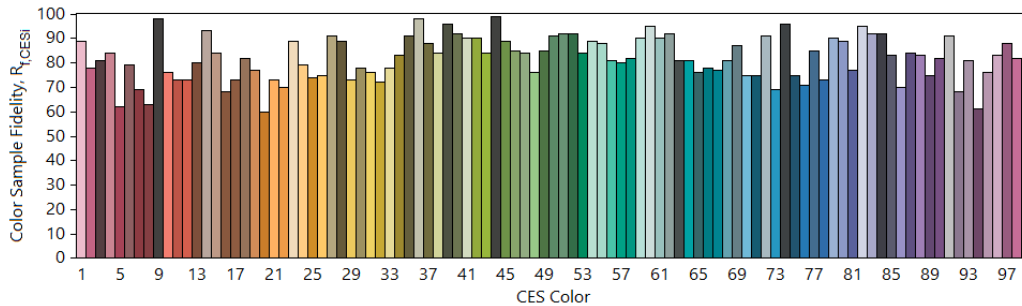
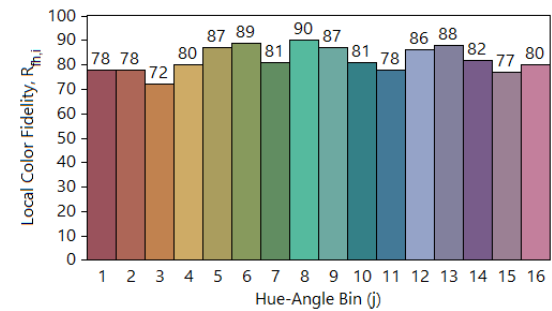
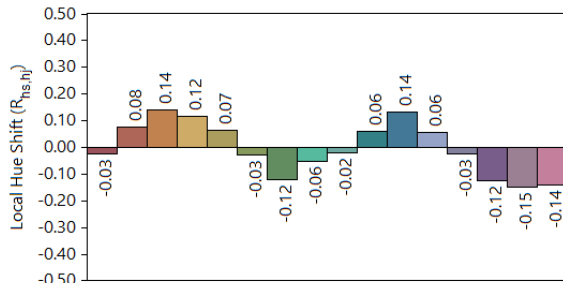
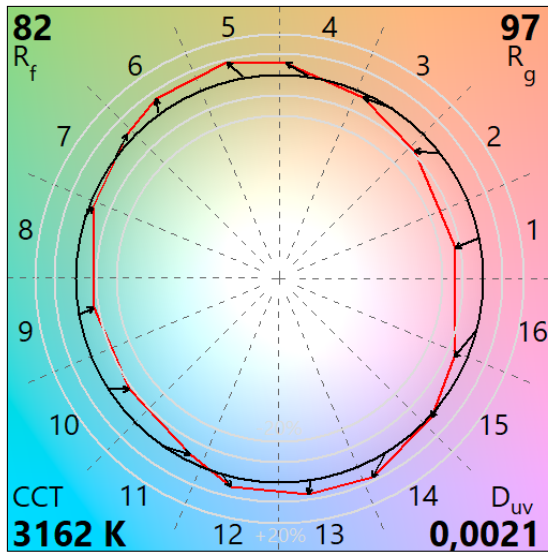
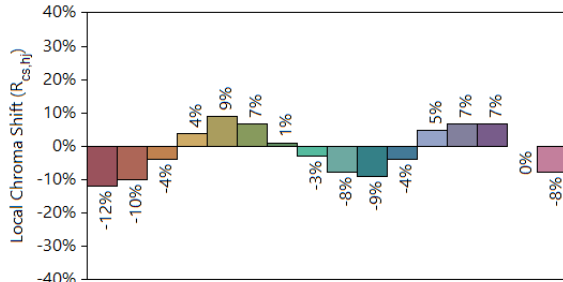
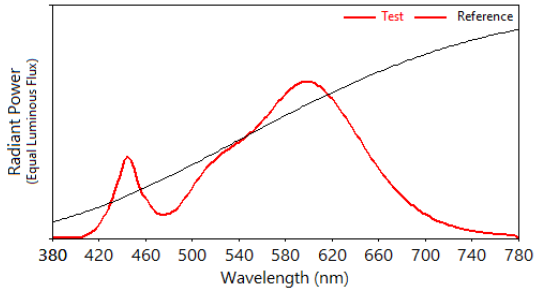
IES TM-30-18 Color Rendition Report

Source: TAMBORA RAYS

Manufacturer: CLAY PAKY

Date: 06.11.2024

Model: TAMBORA RAYS



Notes: White

x 0,4286
y 0,4061
u' 0,2444
v' 0,5209

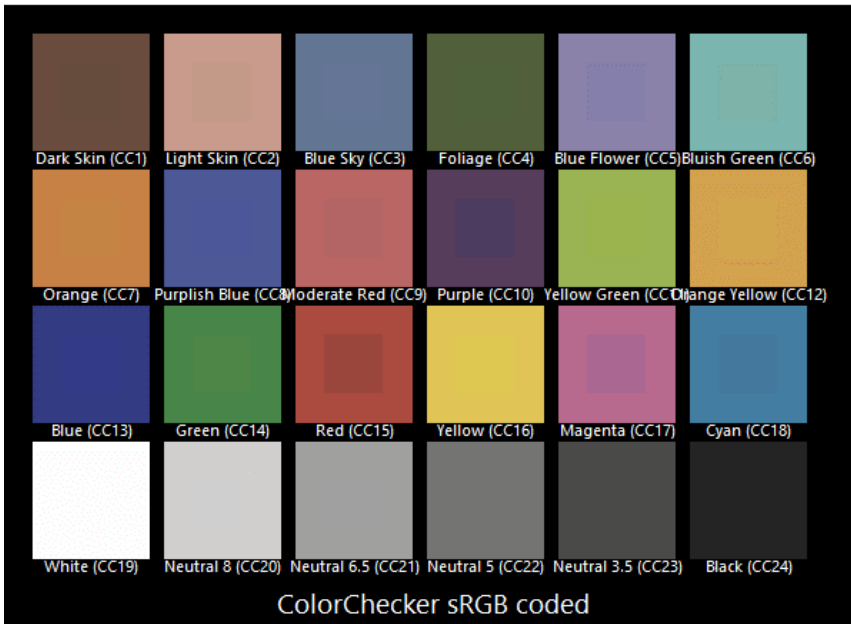
CIE 13.3-1995
(CRI)
R_a 79
R_g -4

Colors are for visual orientation purposes only.

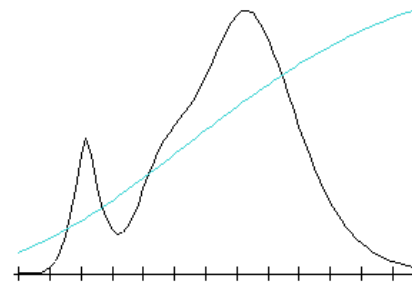
TLCI-2021: WHITE

Direct spectrum input : CCT = P3162 (+0.4)

TLCI-2012 : 61 (P3162)



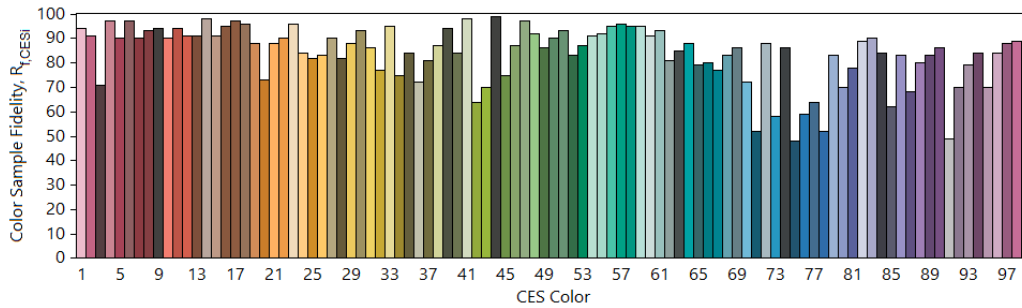
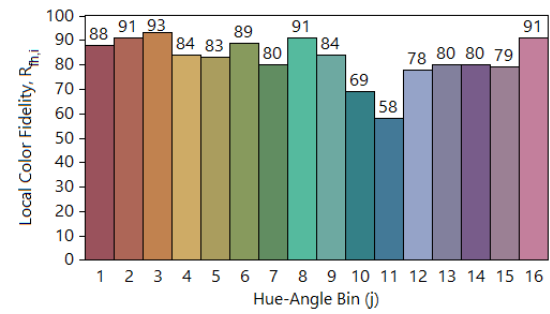
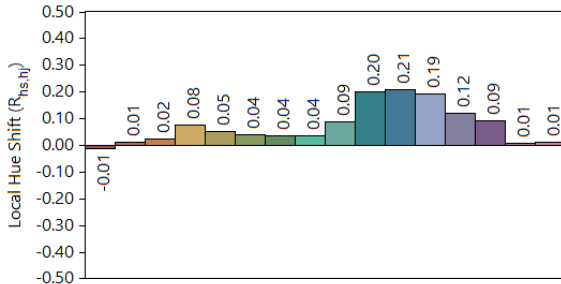
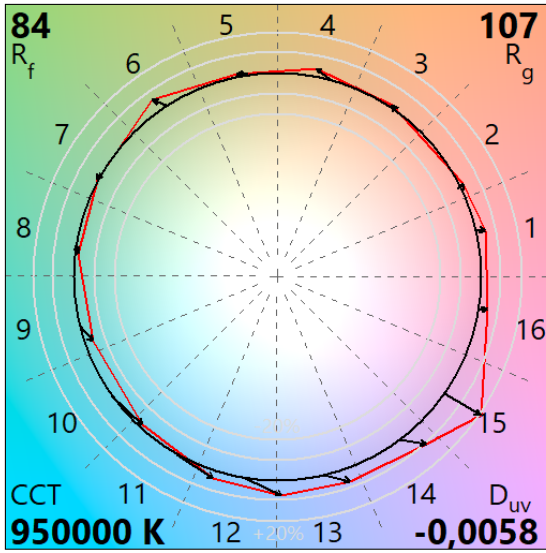
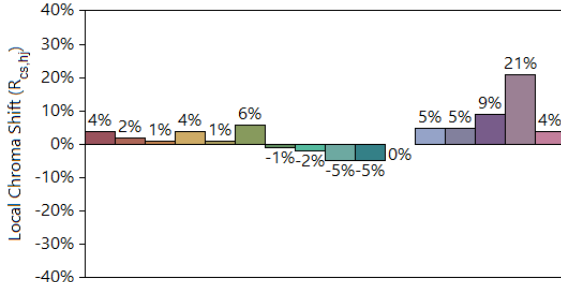
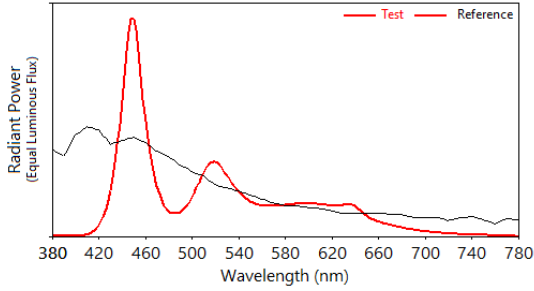
Sector	Lightness	Chroma	Hue
R	++++	++	0
R/Y	0	0	---
Y	0	-	--
Y/G	0	-	0
G	0	0	++
G/C	0	0	+++
C	0	0	+++
C/B	++	0	0
B	0	--	--
B/M	++	-	++++
M	+++	0	+++++
M/R	++++	0	+++++



TM-30: CTO 4%

IES TM-30-18 Color Rendition Report

Source: TAMBORA RAYS Manufacturer: CLAY PAKY
 Date: 06.11.2024 Model: TAMBORA RAYS



Notes: CTO 4%

x 0,2431
 y 0,2283
 u' 0,1851
 v' 0,3911

CIE 13.3-1995
 (CRI)
 Ra N/A
 R9 64

Colors are for visual orientation purposes only.

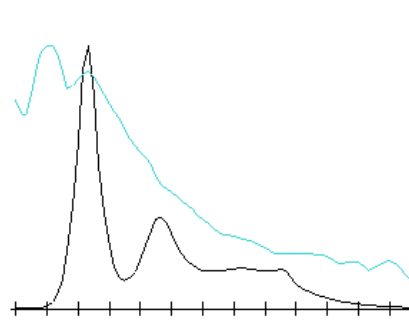
TLCI-2012: CTO 4%

Direct spectrum input : CCT = D950000 (-1.1)

TLCI-2012 : 92 (D950000)



Sector	Lightness	Chroma	Hue
R	0	0	0
R/Y	0	0	0
Y	0	-	0
Y/G	-	-	0
G	-	--	0
G/C	0	-	++
C	0	-	+
C/B	0	0	0
B	0	--	-
B/M	0	0	+
M	0	0	+
M/R	0	0	+



TM-30: CTO 100%

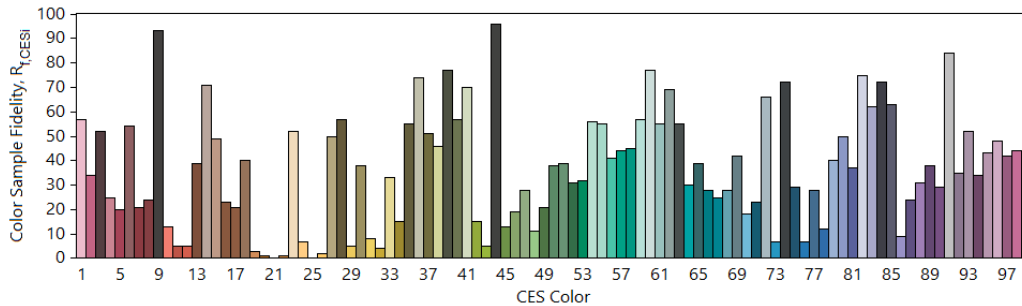
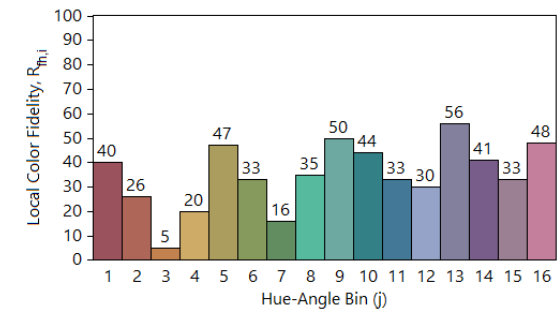
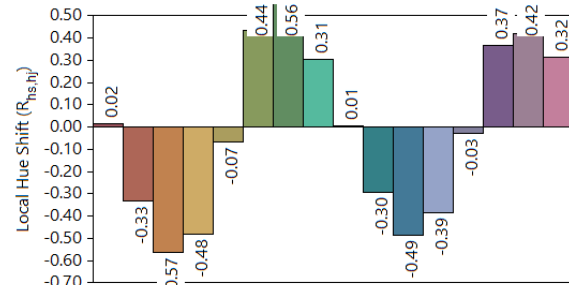
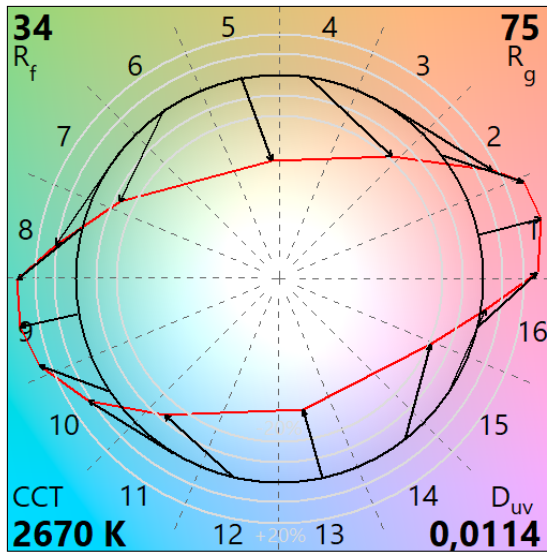
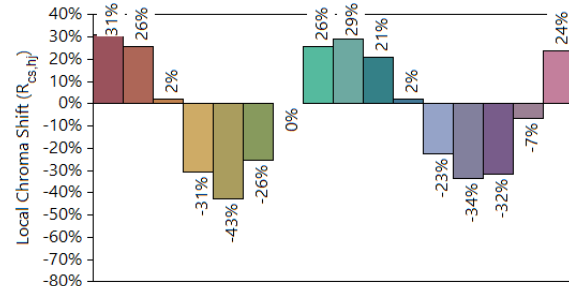
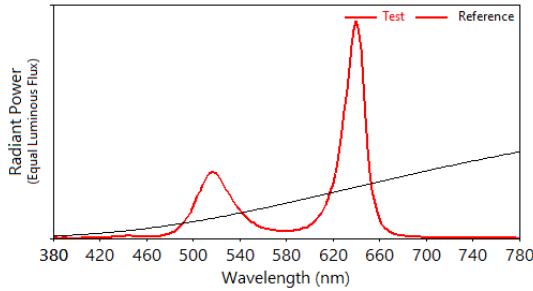
IES TM-30-18 Color Rendition Report

Source: TAMBORA RAYS

Manufacturer: CLAY PAKY

Date: 06.11.2024

Model: TAMBORA RAYS



Notes: CTO 100%

x 0,4835
y 0,4486
u' 0,2608
v' 0,5444

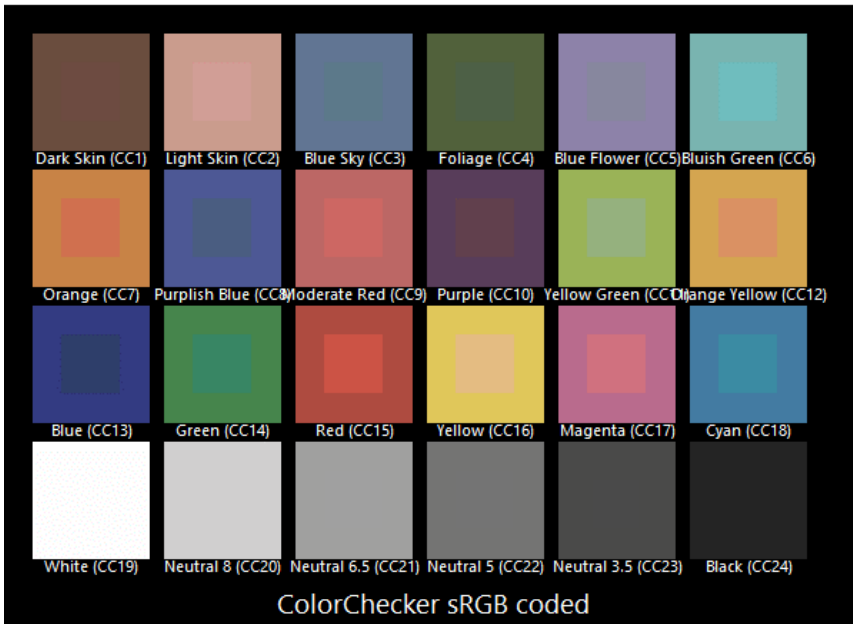
CIE 13.3-1995
(CRI)
R_a 16
R_g -161

Colors are for visual orientation purposes only.

TLCI-2012: CTO 100%

Direct spectrum input : CCT = P2670 (+2.1)

TLCI-2012 : 7 (P2670)



Sector	Lightness	Chroma	Hue
R	---	--	++
R/Y	++++	+++++	N/A
Y	N/A	N/A	N/A
Y/G	N/A	N/A	N/A
G	0	+++++	-----
G/C	0	++++	-----
C	-----	---	---
C/B	-----	+++++	-----
B	0	+++++	-----
B/M	N/A	N/A	N/A
M	N/A	N/A	N/A
M/R	-	+++	-----

