

PHOTOMETRIC TEST REPORT



FIXTURE DATA

Manufacturer: Clay Paky s.r.l.
Fixture model: SINFONYA PROFILE 600
Date: 2024-10-28

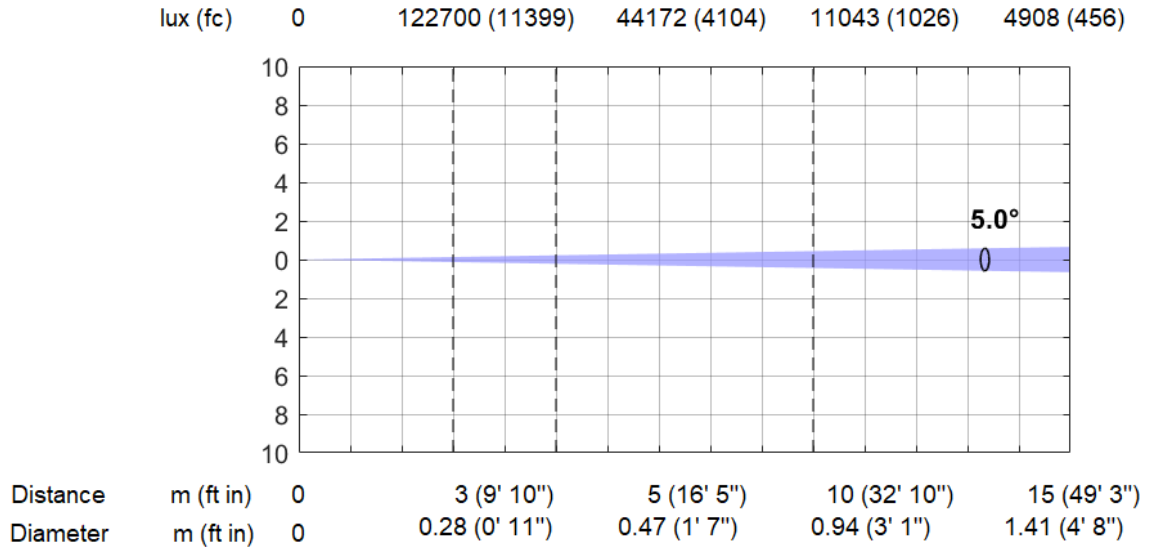
TABLE OF CONTENTS:

➔ FULL COLOR (5°): MINIMUM ZOOM	3
➔ FULL COLOR (60°): MAXIMUM ZOOM	4
➔ WHITE 3200K (5°): MINIMUM ZOOM, MINIMUM CRI	5
➔ WHITE 3200K (5°): MINIMUM ZOOM, MAX CRI	6
➔ WHITE 3200K (60°): MAXIMUM ZOOM, MIN CRI	7
➔ WHITE 6000K (5°): MINIMUM ZOOM, MINIMUM CRI	8
➔ WHITE 6000K (60°): MAX ZOOM, MIN CRI	9
➔ WHITE 6000K (60°): MAX ZOOM, MAX CRI	10
➔ WHITE 8000K (5°): MINIMUM ZOOM, MINIMUM CRI	11
➔ WHITE 8000K (60°): MAX ZOOM, MINIMUM CRI	12
➔ WHITE 8000K (60°): MAX ZOOM, MAX CRI	13
➔ TM 30-18: WHITE 3200K - CRI 1%	14
➔ TLCI2012: 3200K - CRI 1%	15
➔ TM 30-18: WHITE 3200K - CRI 100%	16
➔ TLCI2012: 3200K - CRI 100%	17
➔ TM 30-18: WHITE 6000K - CRI 1%	18
➔ TLCI 2012: 6000K - CRI 1%	19
➔ TM 30-18: WHITE 6000K - CRI 100%	20
➔ TLCI2012L: 6000K - CRI 100%	21

FULL COLOR (5°): MINIMUM ZOOM

Min. Zoom, Full Color (5°)

Total Output: 7250 lumens

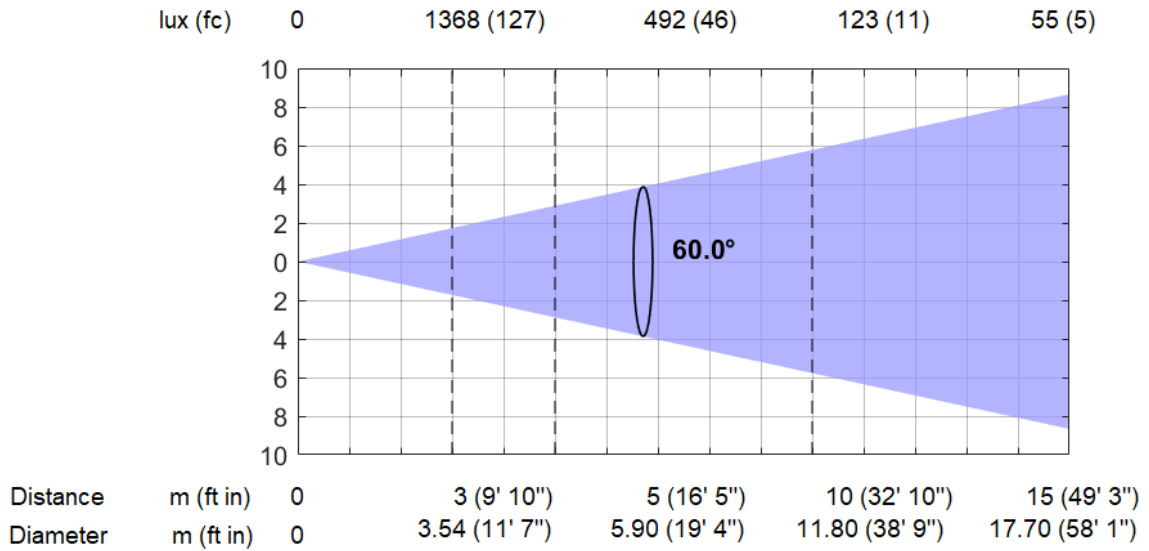


*Lumen values detected with integrating sphere. Measurements taken 15 minutes after the fixture was turned on.

FULL COLOR (60°): MAXIMUM ZOOM

Max. Zoom, Full Color (60°)

Total Output: 12050 lumens

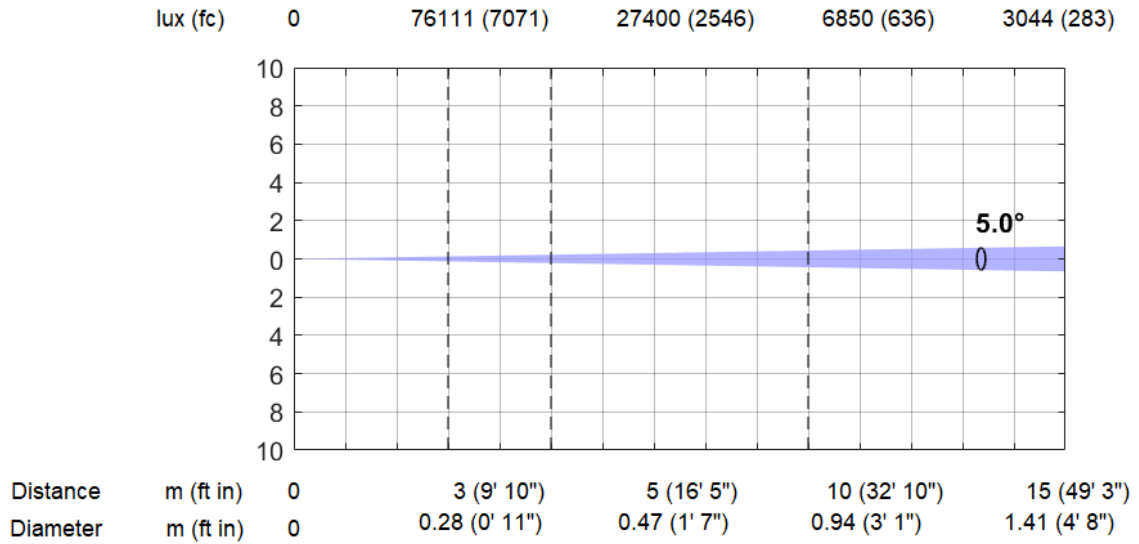


*Lumen values detected with integrating sphere. Measurements taken 15 minutes after the fixture was turned on.

WHITE 3200K (5°): MINIMUM ZOOM, MINIMUM CRI

Min. Zoom, Min. CRI, White 3200K (5°)

Total Output: 4500 lumens



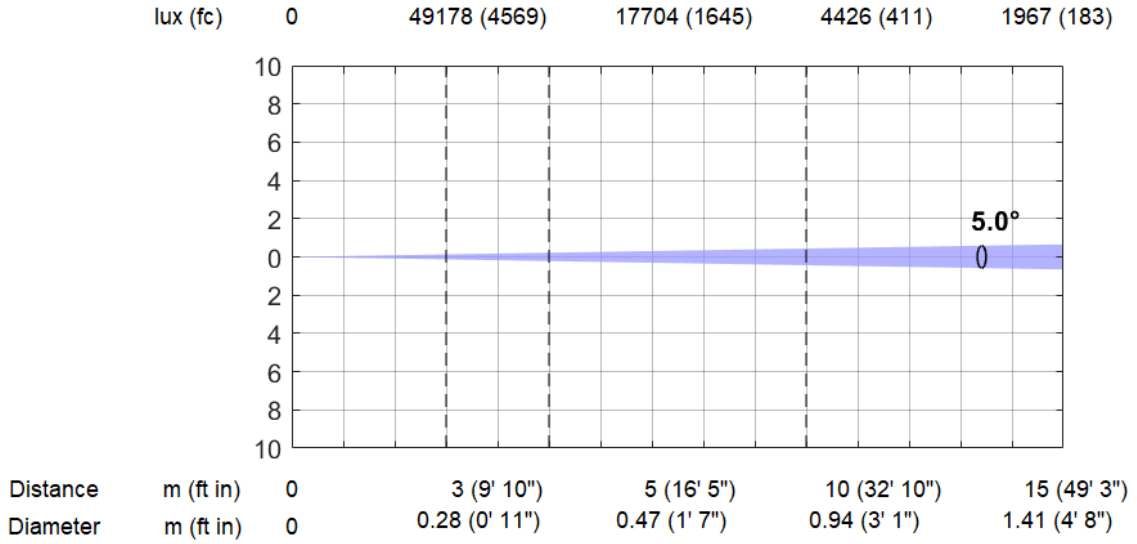
*Lumen values detected with integrating sphere. Measurements taken 15 minutes after the fixture was turned on.



WHITE 3200K (5°): MINIMUM ZOOM, MAX CRI

Min. Zoom, Max. CRI, White 3200K (5°)

Total Output: 2910 lumens

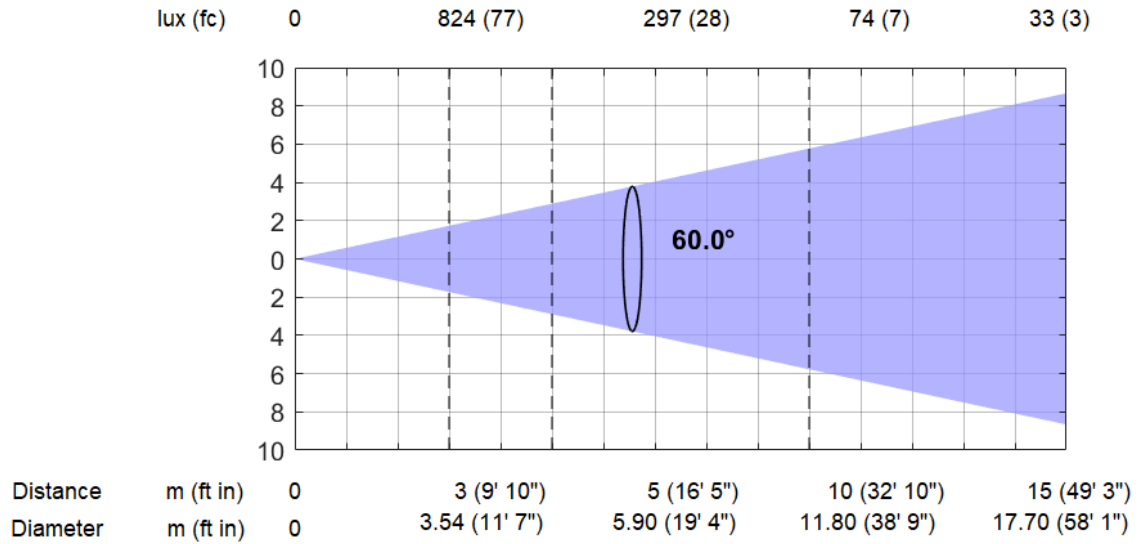


*Lumen values detected with integrating sphere. Measurements taken 15 minutes after the fixture was turned on.

WHITE 3200K (60°): MAXIMUM ZOOM, MIN CRI

Max. Zoom, Min. CRI, White 3200K (60°)

Total Output: 7150 lumens

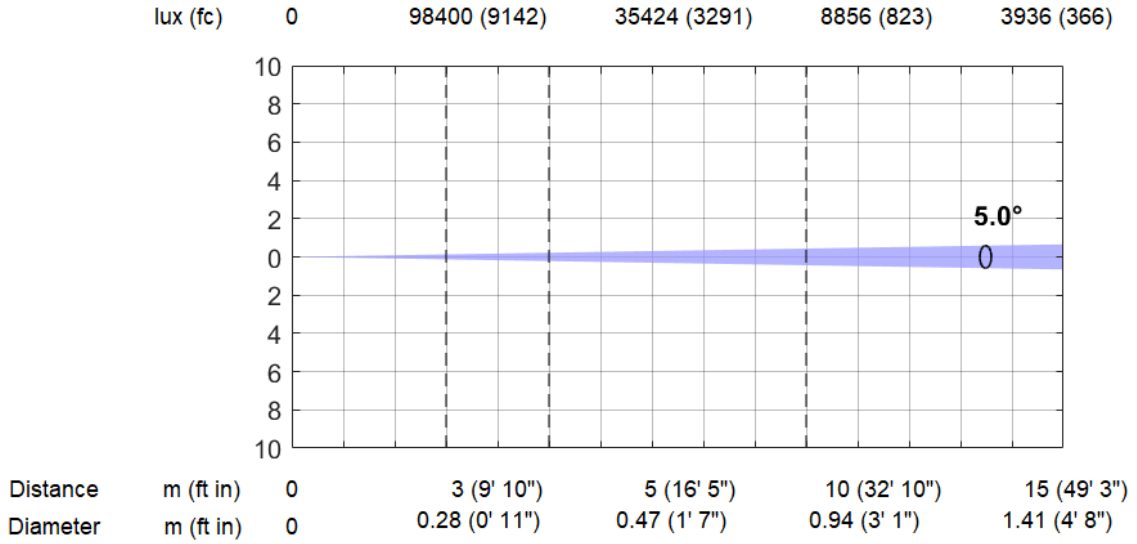


*Lumen values detected with integrating sphere. Measurements taken 15 minutes after the fixture was turned on.

WHITE 6000K (5°): MINIMUM ZOOM, MINIMUM CRI

Min. Zoom, Min. CRI, White 6000K (5°)

Total Output: 5820 lumens

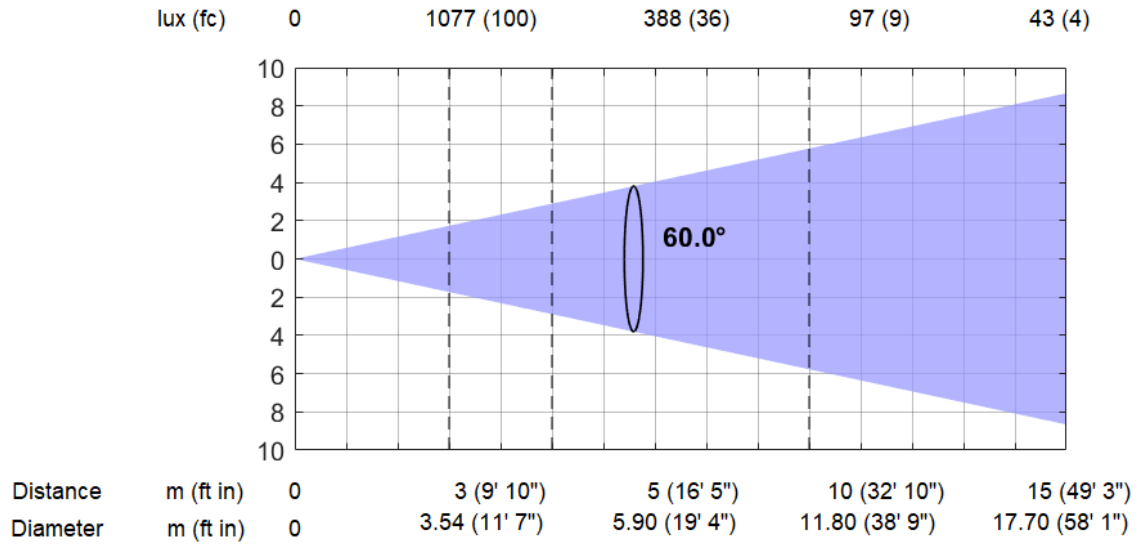


*Lumen values detected with integrating sphere. Measurements taken 15 minutes after the fixture was turned on.

WHITE 6000K (60°): MAX ZOOM, MIN CRI

Max. Zoom, Min. CRI, White 6000K (60°)

Total Output: 9370 lumens

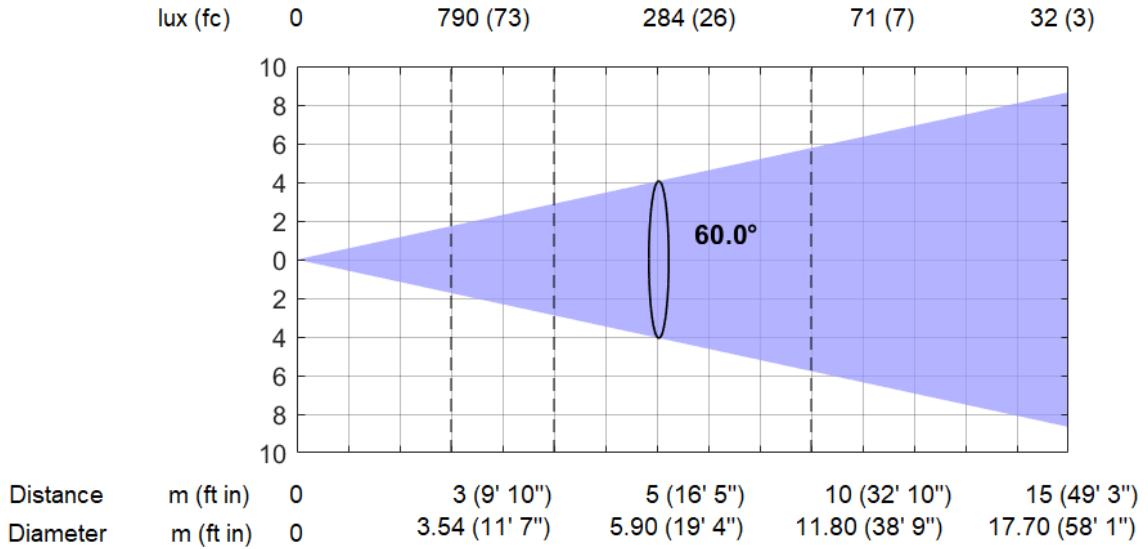


*Lumen values detected with integrating sphere. Measurements taken 15 minutes after the fixture was turned on.

WHITE 6000K (60°): MAX ZOOM, MAX CRI

Max. Zoom, Max. CRI, White 6000K (60°)

Total Output: 6830 lumens

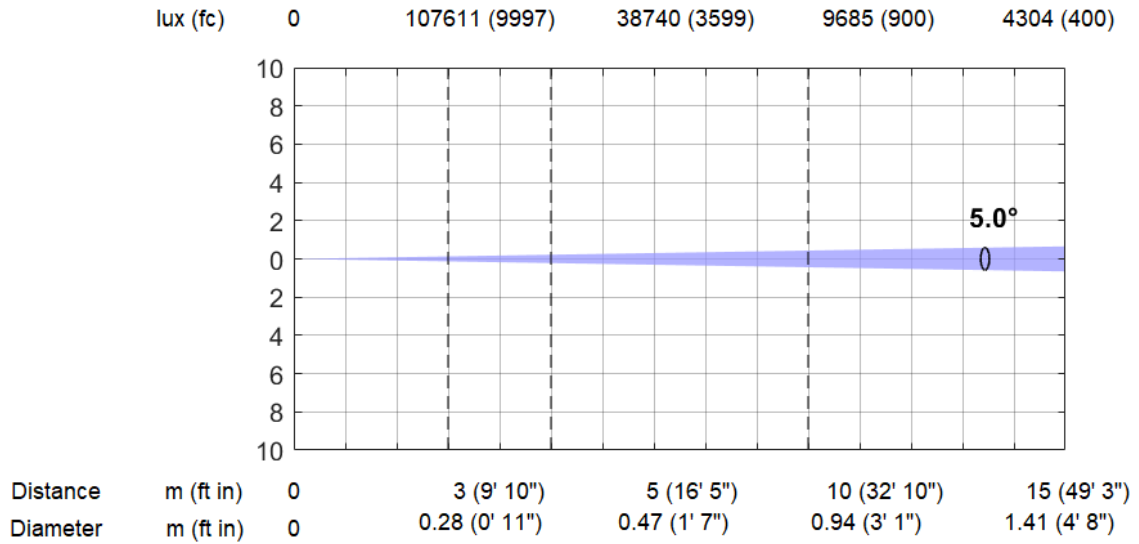


*Lumen values detected with integrating sphere. Measurements taken 15 minutes after the fixture was turned on.

WHITE 8000K (5°): MINIMUM ZOOM, MINIMUM CRI

Min. Zoom, Min. CRI, White 8000K (5°)

Total Output: 6380 lumens

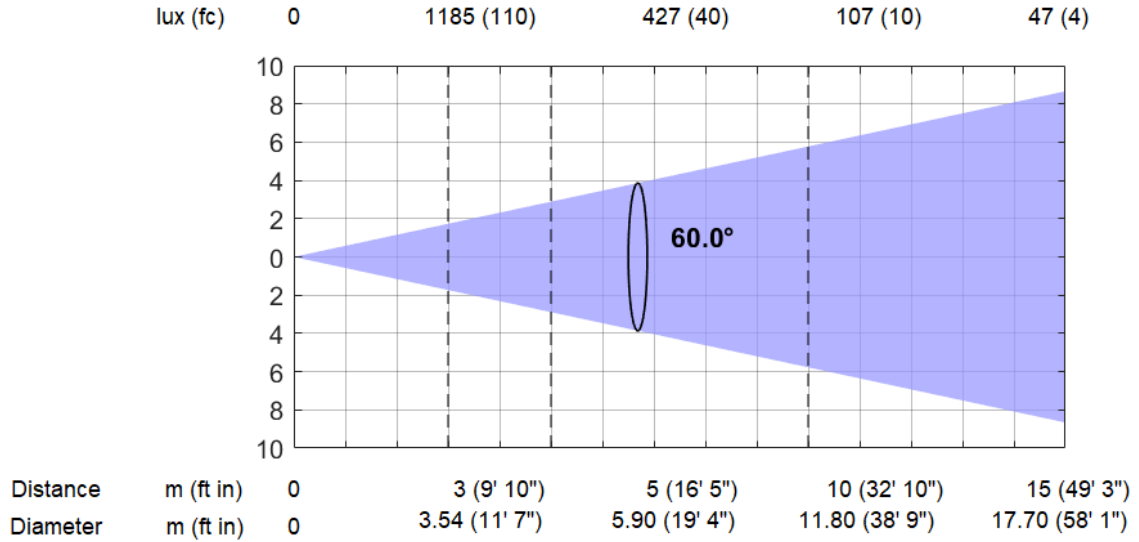


*Lumen values detected with integrating sphere. Measurements taken 15 minutes after the fixture was turned on.

WHITE 8000K (60°): MAX ZOOM, MINIMUM CRI

Max. Zoom, Min. CRI, White 8000K (60°)

Total Output: 10310 lumens

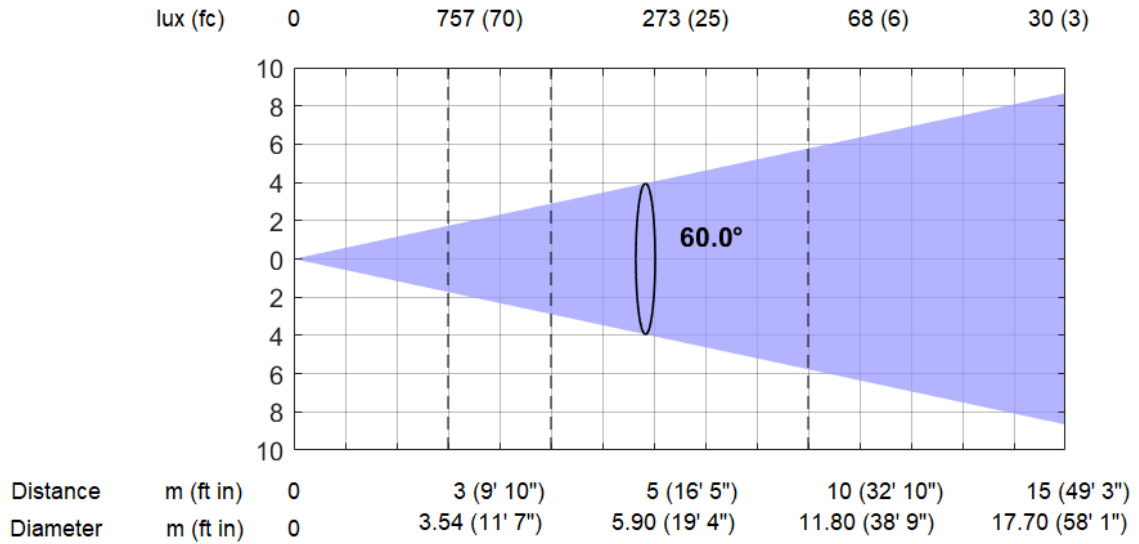


*Lumen values detected with integrating sphere. Measurements taken 15 minutes after the fixture was turned on.

WHITE 8000K (60°): MAX ZOOM, MAX CRI

Max. Zoom, Max. CRI, White 8000K (60°)

Total Output: 6620 lumens



*Lumen values detected with integrating sphere. Measurements taken 15 minutes after the fixture was turned on.

TM 30-18: WHITE 3200K - CRI 1%

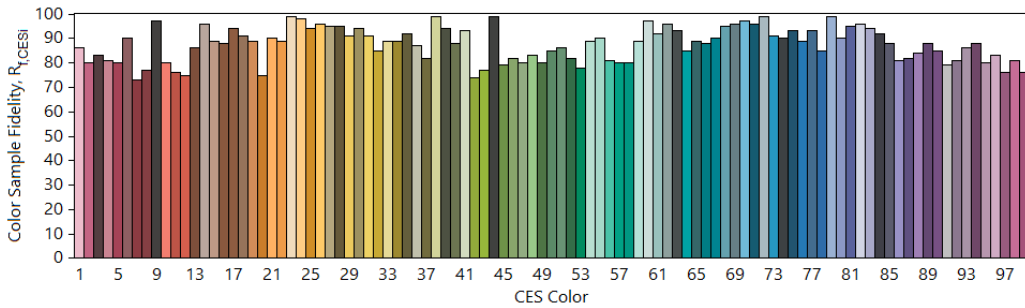
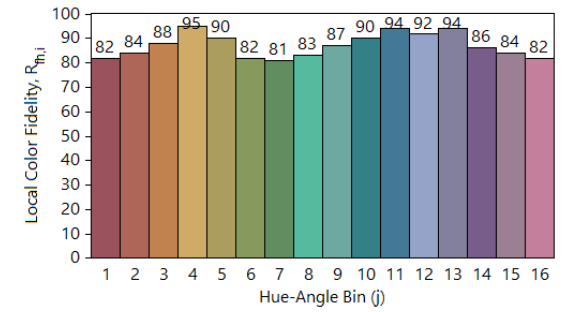
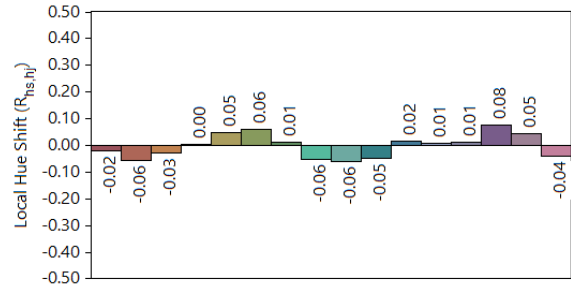
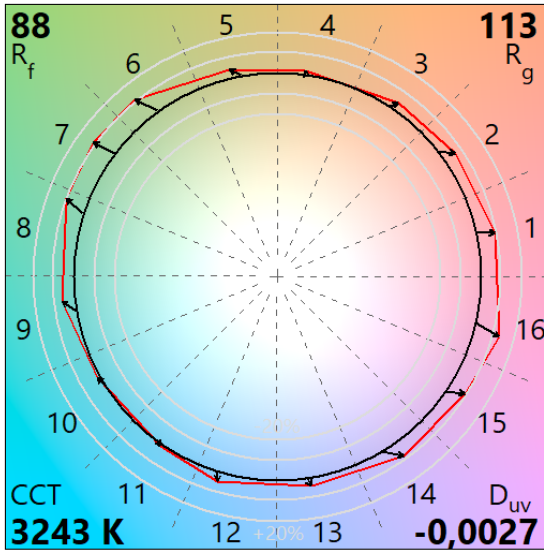
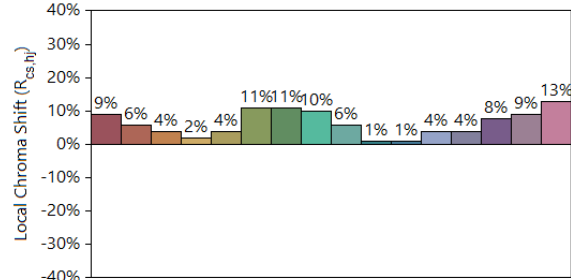
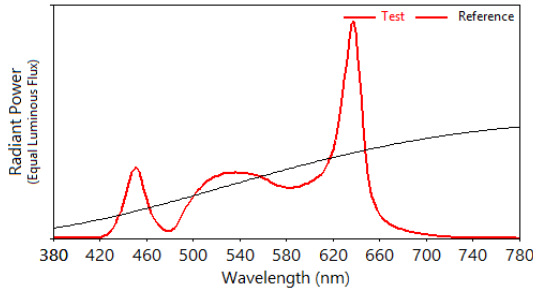
IES TM-30-18 Color Rendition Report

Source: SINFONYA Profile 600

Manufacturer: CLAY PAKY

Date: 23.11.21

Model: SINFONYA Profile 600



Notes: White 3200K - CRI 1%

x 0,4173
y 0,3902
u' 0,2438
v' 0,5128

CIE 13.3-1995
(CRI)
R_a 80
R_g 21

Colors are for visual orientation purposes only.

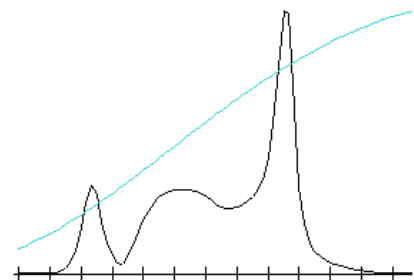
TLCI2012: 3200K - CRI 1%

Direct spectrum input : CCT = P3243 (-0.5)

TLCI-2012 : 79 (P3243)



Sector	Lightness	Chroma	Hue
R	--	-	0
R/Y	0	0	0
Y	0	0	0
Y/G	0	-	0
G	0	-	0
G/C	0	---	+++++
C	0	-	++++
C/B	0	+	++++
B	0	-	0
B/M	+	0	+++
M	0	-	+
M/R	--	-	0



TM 30-18: WHITE 3200K - CRI 100%

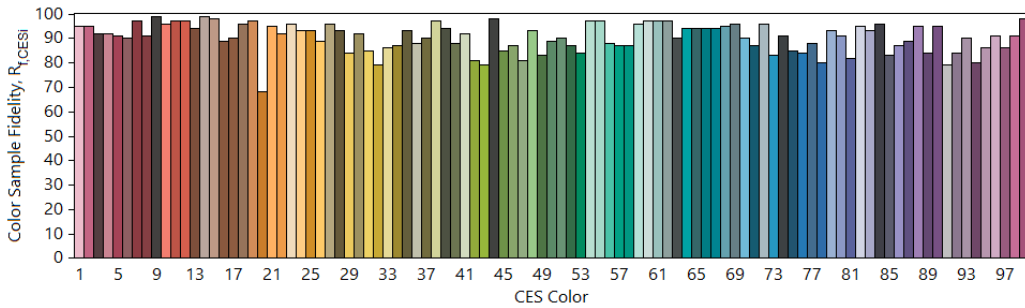
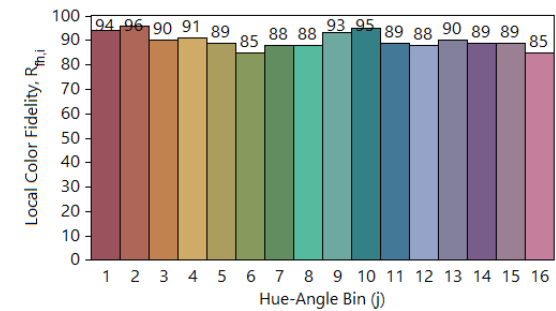
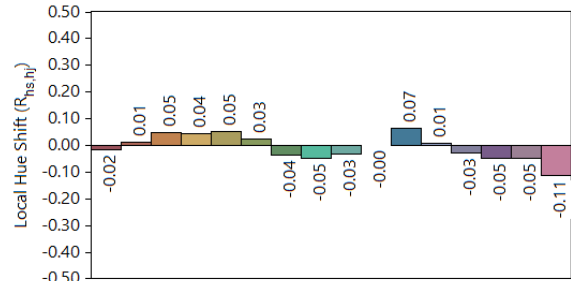
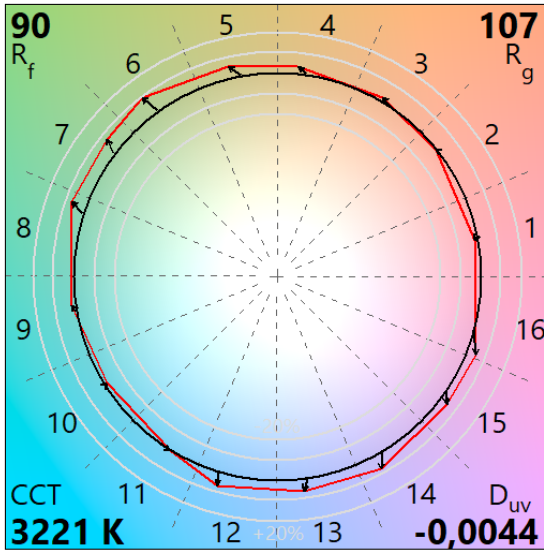
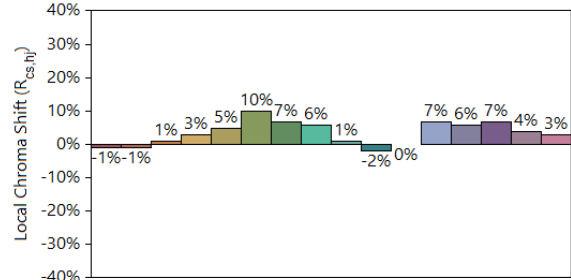
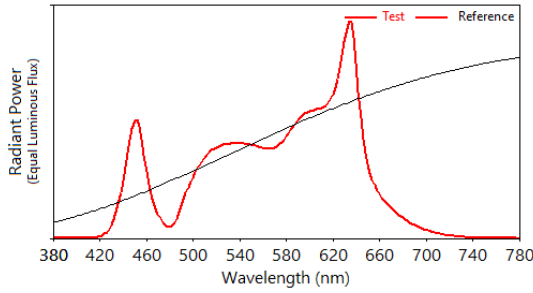
IES TM-30-18 Color Rendition Report

Source: Led Atria SHL600-5C-R00-103 cod.LED02A-001

Manufacturer: Clay Paky S.p.A.

Date: 23.11.2021

Model: SINFONYA Profile 600



Notes: White 3200K - CRI 100%

x 0,4166
y 0,3858
u' 0,2451
v' 0,5109

CIE 13.3-1995
(CRI)
R_a 95
R_g 87

Colors are for visual orientation purposes only.

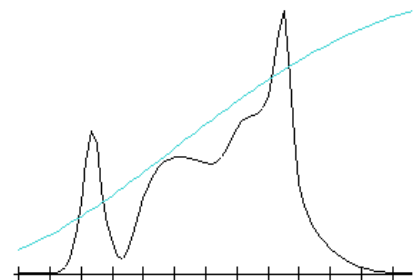
TLCI2012: 3200K - CRI 100%

Direct spectrum input : CCT = P3221 (-0.8)

TLCI-2012 : 78 (P3221)



Sector	Lightness	Chroma	Hue
R	0	0	0
R/Y	0	0	0
Y	0	-	0
Y/G	0	-	0
G	0	-	+
G/C	0	--	+++++
C	0	0	+++++
C/B	0	+	+++
B	0	--	-
B/M	+	-	+++++
M	+	0	+++
M/R	+	0	+++



TM 30-18: WHITE 6000K - CRI 1%

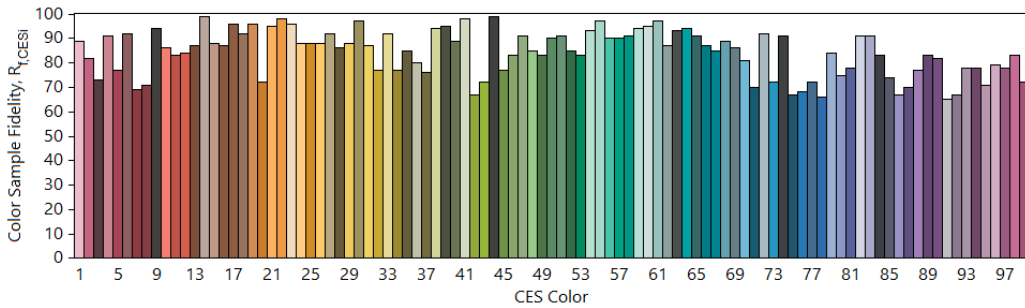
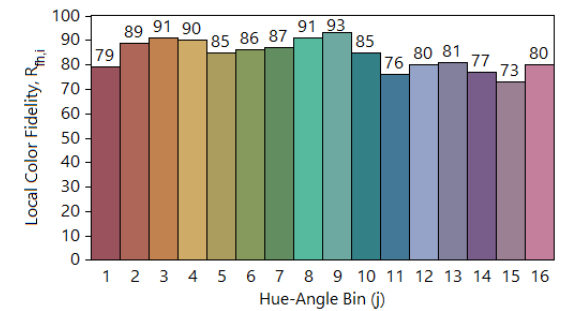
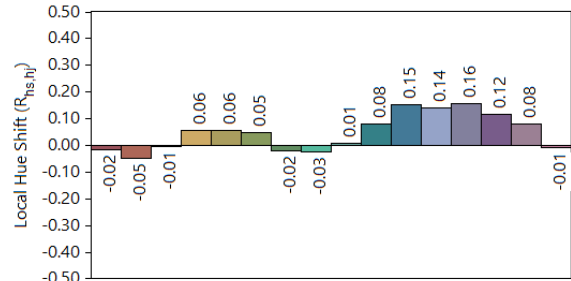
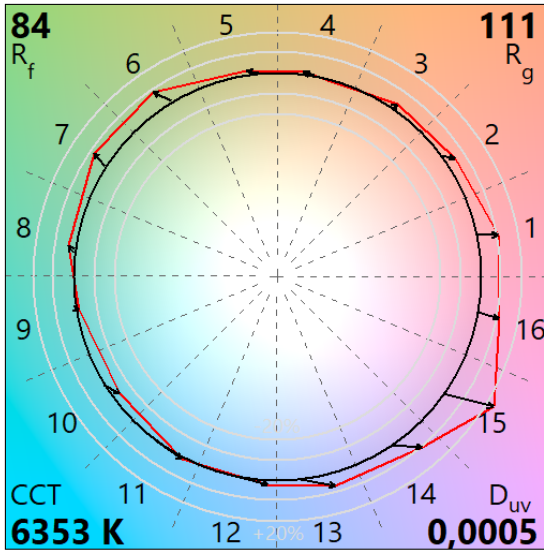
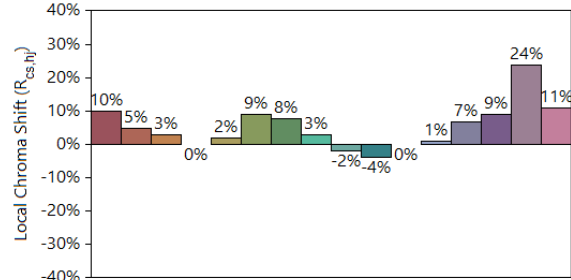
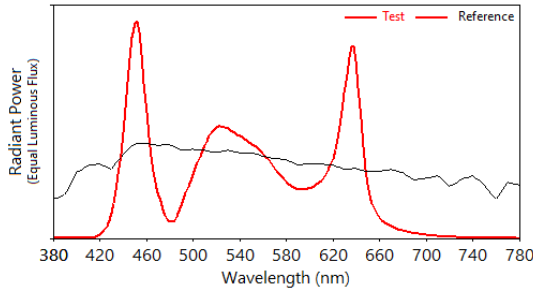
IES TM-30-18 Color Rendition Report

Source: Led Atria SHL600-5C-R00-103 cod.LED02A-001

Manufacturer: Clay Paky S.p.A.

Date: 23.11.2021

Model: SINFONYA Profile 600



Notes: White 6000K - CRI 1%

x 0,3158
y 0,3268
u' 0,2008
v' 0,4676

CIE 13.3-1995
(CRI)
Ra 81
Rg 8

Colors are for visual orientation purposes only.

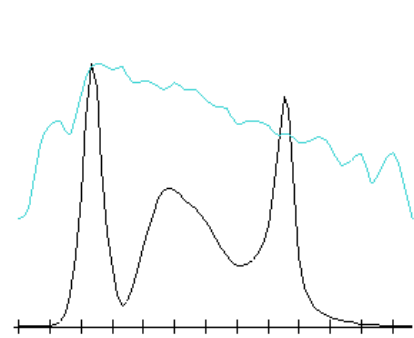
TLCI 2012: 6000K - CRI 1%

Direct spectrum input : CCT = D6353 (-0.5)

TLCI-2012 : 78 (D6353)



Sector	Lightness	Chroma	Hue
R	----	--	0
R/Y	0	0	0
Y	0	-	-
Y/G	0	--	-
G	0	--	0
G/C	0	--	+++
C	0	-	++
C/B	0	0	+
B	0	--	-
B/M	+	-	+
M	0	-	0
M/R	---	--	-



TM 30-18: WHITE 6000K - CRI 100%

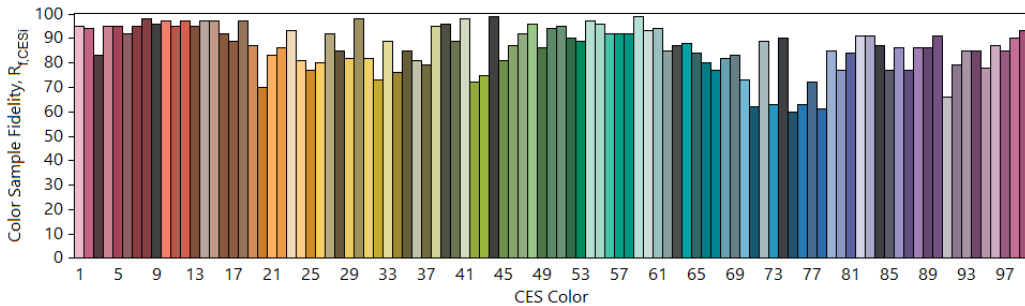
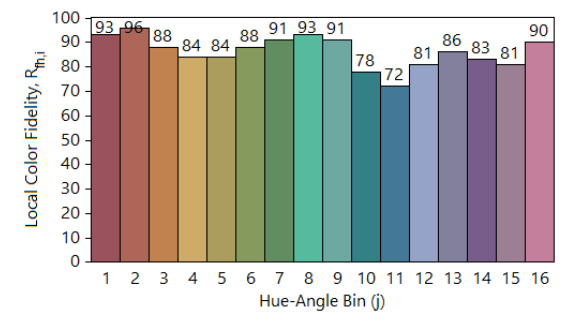
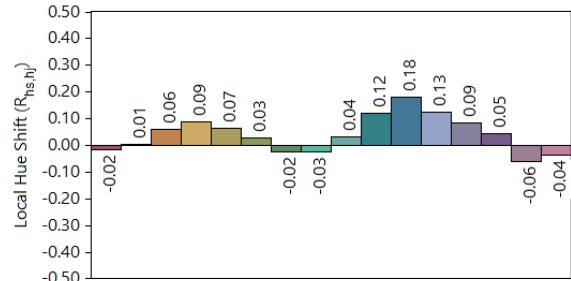
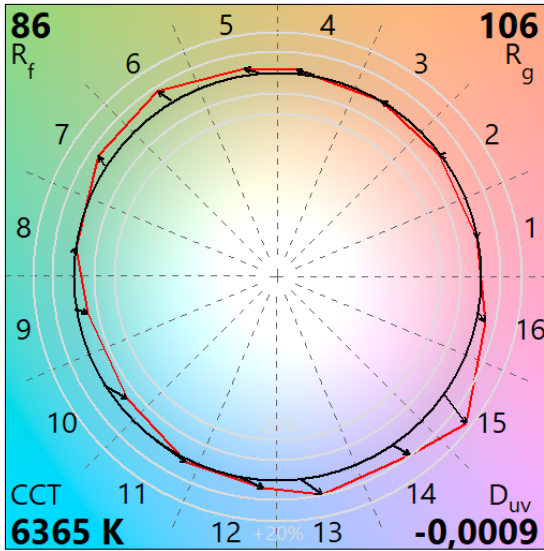
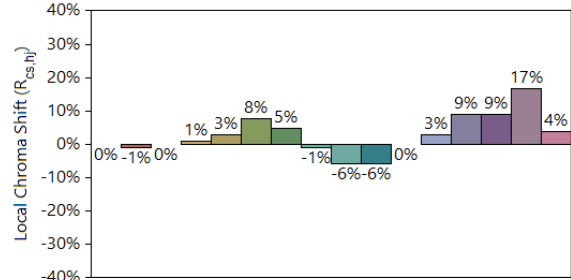
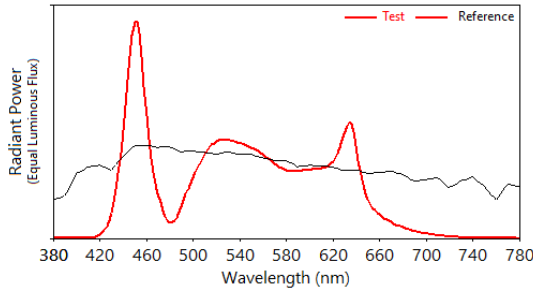
IES TM-30-18 Color Rendition Report

Source: Led Atria SHL600-5C-R00-103 cod.LED02A-001

Manufacturer: Clay Paky S.p.A.

Date: 23.11.2021

Model: SINFONYA Profile 600



Notes: White 6000K - CRI 100%

x 0,3159
y 0,3241
u' 0,2019
v' 0,4662

CIE 13.3-1995
(CRI)
Ra 89
Rg 93

Colors are for visual orientation purposes only.

TLCI2012L: 6000K - CRI 100%

Direct spectrum input : CCT = P3221 (-0.8)

TLCI-2012 : 78 (P3221)



Sector	Lightness	Chroma	Hue
R	0	0	0
R/Y	0	0	0
Y	0	-	0
Y/G	0	-	0
G	0	-	+
G/C	0	--	+++++
C	0	0	+++++
C/B	0	+	+++
B	0	--	-
B/M	+	-	+++++
M	+	0	+++
M/R	+	0	+++

