

***SAMSON***<sup>®</sup>

HEADPHONES





# Z SERIES HEADPHONES

The power of music lies in its ability to inspire connection. With the Z Series, Samson's objective was to develop a line of headphones that connects artists with their audiences. By delivering high-definition audio, incredible comfort, and designs tailored to a mobile lifestyle, Samson's Z Series Headphones deliver a complete listening experience.





# Z55

## PROFESSIONAL REFERENCE HEADPHONES

---

- Designed for professional recording, mixing and audiophile music monitoring
- Wide soundstage with extended low-end response
- Lightweight, low-profile design with genuine lambskin cushioning
- Collapsible, closed-back design with 90° rotating ear cups
- Premium 45mm drivers with rare earth magnets
- 10Hz–25kHz frequency response
- Detachable 8' straight, 4'–10' coiled and 4' straight with microphone and call/answer control cables
- 1/4" adapter and protective carry pouch included



STUDIO  
SOUND



LAMBSKIN  
CUSHIONING



ROTATING  
EAR CUPS



COLLAPSIBLE  
DESIGN



# Z45

## PROFESSIONAL STUDIO HEADPHONES

---

- Engineered for professional studio recording and DJ mixing
- Enhanced voicing with smooth, warm mid-range
- Lightweight, low-profile design with genuine lambskin cushioning
- Collapsible, closed-back design with 90° rotating ear cups
- High-sensitivity 40mm drivers with rare earth magnets
- 15Hz–22kHz frequency response
- Detachable 8' straight and 4'–10' coiled cables
- 1/4" adapter and protective carry pouch included







# Z35

STUDIO  
HEADPHONES

---

- Ideal for music monitoring and field audio
- Voiced for a natural, flat response
- Lightweight, low-profile design with high-protein leather cushioning
- Collapsible, closed-back design with 90° rotating ear cups
- High-sensitivity 40mm drivers with rare earth magnets
- 20Hz–20kHz frequency response
- Hardwired 8' straight cable, 1/4" adapter and protective carry pouch included



STUDIO  
SOUND



HIGH-PROTEIN  
LEATHER  
CUSHIONING



ROTATING  
EAR CUPS



COLLAPSIBLE  
DESIGN



# Z25

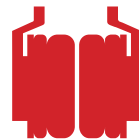
STUDIO  
HEADPHONES

---

- Perfect for tracking and monitoring applications
- Tuned with exceptional low-end extension
- Lightweight, low-profile design with protein leather cushioning
- Closed-back design with 90° rotating ear cups
- High-sensitivity 40mm drivers with rare earth magnets
- 20Hz–20kHz frequency response
- Hardwired 8' straight cable and 1/4" adapter included



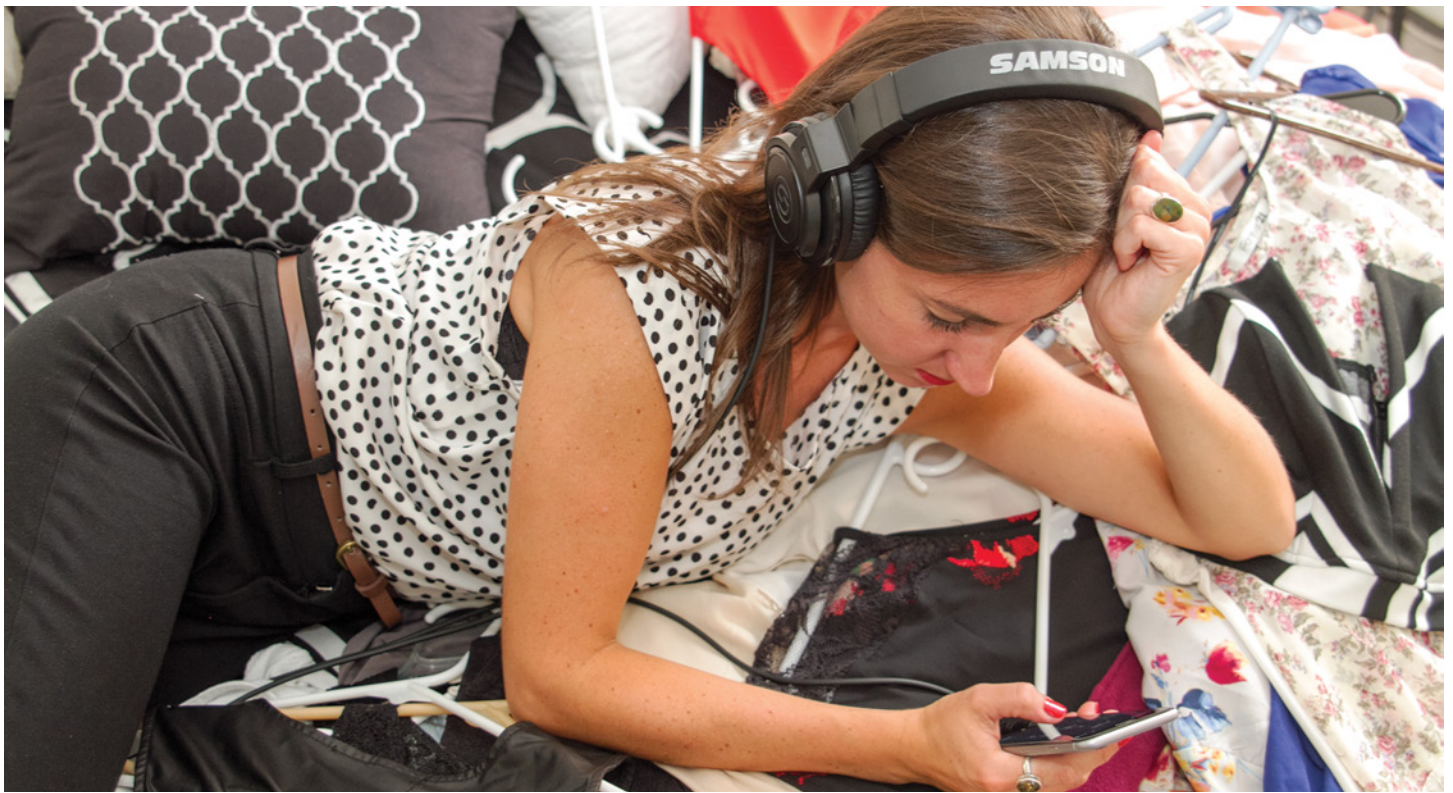
STUDIO  
SOUND



PROTEIN  
LEATHER  
CUSHIONING



ROTATING  
EAR CUPS

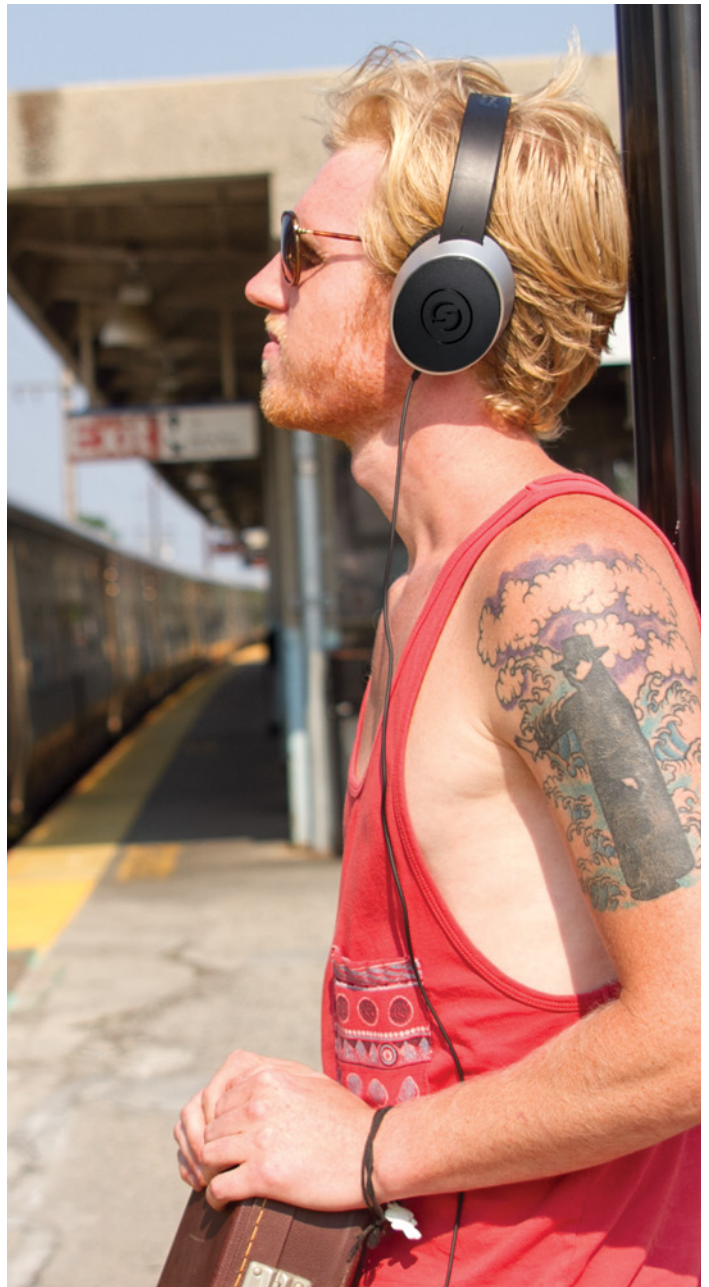


**Z** SERIES  
HEADPHONES



# SR SERIES HEADPHONES

Based on Samson's 35 years of experience developing products for both live and studio applications, the SR Series Headphones deliver dynamic, full-range audio to enhance your listening experience. Whether you're on the go or at home, the SR Series has an option that fits your lifestyle. Lightweight and durable, the SR Series offers either closed or open-back designs with on-ear or over-ear comfort.





# SR550

## OVER-EAR STUDIO HEADPHONES

---

- Lightweight design ideal for both mobile and home listening
- Detailed, full-range audio with extended low-end response
- Over-ear, closed back design with protein leather cushioning
- 40mm drivers with rare earth magnets
- Adjustable padded headband with superior durability
- 20Hz–20kHz frequency response
- 1/4" adapter included



# SR450

## ON-EAR STUDIO HEADPHONES

---

- Ultra-lightweight design ideal for fitness and casual listening
- Detailed, full-range audio
- On-ear, closed-back design with protein leather cushioning
- 40mm drivers with rare earth magnets
- Adjustable padded headband with superior durability
- 20Hz–20kHz frequency response
- 1/4" adapter included



# SR350

## OVER-EAR STEREO HEADPHONES

---

- Lightweight design ideal for music recording, practice and listening
- Powerful audio performance
- Over-ear, closed back design with cushioned ear cups
- 35mm drivers with rare earth magnets
- Adjustable padded headband
- 20Hz–20kHz frequency range
- 1/4" adapter included



# SR850

## OPEN-BACK STUDIO HEADPHONES

---

- Ideal for professional recording and hi-fi monitoring
- Transparent response with airy highs and pronounced depth
- Semi-open-back design with velour cushioning
- Large 50mm drivers with rare earth magnets
- 10Hz–30kHz frequency response
- 1/4" adapter included



# RTE SERIES HEADPHONES

From enjoying wireless entertainment during workouts to blocking out the roar of jet engines, Samson's RTE Series Headphones liberate listeners from the hustle and bustle of everyday life. The RTE Series cuts through the noise, delivering high-quality sound with a perfect blend of comfort, convenience and reliability.







# RTE 2

## WIRELESS HEADPHONES

- Ideal for high-quality music playback in mobile settings
- *Bluetooth*® connectivity to wirelessly stream audio
- Built-in rechargeable lithium ion battery
- 10+ hours of full-level listening, 200 hours on standby
- Onboard microphone for hands-free phone calls
- aptX® streaming and NFC touch pairing supported
- Flat-fold, on-ear design with high-protein leather cushioning
- Premium 40mm drivers with rare earth magnets



Detachable USB charging cable, audio cable and protective carry case included



Pairs with smartphones, tablets and laptops



# RTE X

## NOISE CANCELLING HEADPHONES

- Perfect for travel, fitness, rest and relaxation
- Active Noise Cancellation technology (90% noise reduction)
- 20 hours of battery life via single AAA battery
- Unlimited Passive mode operation
- 1-touch Monitor mode
- Flat-fold, over-ear design with high-protein leather cushioning
- Premium 40mm drivers with rare earth magnets
- 20Hz–20kHz frequency response
- Detachable audio cable and protective carry case included



ACTIVE NOISE  
CANCELLATION



STUDIO  
SOUND



20 HOURS OF  
BATTERY LIFE



IDEAL FOR  
TRAVEL

# MODEL COMPARISONS



SPECIFICATIONS	Z25	Z35	Z45	Z55
DESIGN	Over-ear, closed-back dynamic	Over-ear, closed-back dynamic	Over-ear, closed-back dynamic	Over-ear, closed-back dynamic
DRIVER	40mm neodymium magnet	40mm neodymium magnet	40mm neodymium magnet	45mm neodymium magnet
SENSITIVITY (1kHz)	94dB	94dB	94dB	98dB
IMPEDANCE (1kHz)	32Ω	32Ω	32Ω	32Ω
MAX INPUT POWER (1kHz)	500mW	500mW	500mW	1000mW
FREQUENCY RANGE	20Hz–20kHz	20Hz–20kHz	15Hz–22kHz	10Hz–25kHz
EAR PADS	Protein leather	High-protein leather	Genuine lambskin	Genuine lambskin
PRODUCT WEIGHT	0.59lb (269g)	0.6lb (273g)	0.53lb (242g)	0.52lb (240g)
CABLE TYPE	Hardwired straight	Hardwired straight	Detachable coiled Detchable straight	Detachable coiled, straight and straight with remote
CABLE LENGTH	8.25' (2.5m)	8.25' (2.5m)	Coiled: 4'–10' (1.2m–3m) Straight: 8' (2.5m)	Coiled: 4'–10' (1.2m–3m) Straight: 8' (2.5m) Straight w/remote: 4' (1.2m)
ACCESSORIES	1/4" adapter	1/4" adapter, carry pouch	1/4" adapter, carry pouch	1/4" adapter, carry pouch



# HEADPHONES



SR350	SR450	SR550	SR850	RTE 2	RTE X
Over-ear, closed-back dynamic	On-ear, closed-back dynamic	Over-ear, closed-back dynamic	Over-ear, semi-open dynamic	On-ear, closed-back	Over-ear, closed-back
40mm neodymium magnet	40mm neodymium magnet	40mm neodymium magnet	50mm neodymium magnet	40mm neodymium magnet	40mm neodymium magnet
110dB	110dB	110dB	98dB	109dB	94dB
32 $\Omega$	32 $\Omega$	32 $\Omega$	32 $\Omega$	32 $\Omega$	32 $\Omega$
-	-	-	-	-	30mW
20Hz–20kHz	20Hz–20kHz	20Hz–20kHz	20Hz–20kHz	20Hz–20kHz	20Hz–20kHz
Leatherette	Protein leather	Protein leather	Velour	High-protein leather	High-protein leather
0.35lb (160g)	0.35lb (160g)	0.4lb (185g)	0.6lb (270g)	0.5lb (227g)	0.5lb (227g)
Hardwired straight	Hardwired straight	Hardwired straight	Hardwired straight	Detachable straight Detachable USB (charging)	Detachable straight
8.25' (2.5m)	8.25' (2.5m)	8.25' (2.5m)	8.25' (2.5m)	Straight: 4' (1.2m) USB: 3.75' (1.1m)	4' (1.2m)
1/4" adapter	1/4" adapter	1/4" adapter	1/4" adapter	Protective carry case	Protective carry case



 **SAMSONHEADPHONES.COM**

Samson Technologies • 45 Gilpin Ave • Hauppauge, NY 11788

© 2016 Samson Technologies Inc. All Rights Reserved. Apple and iPad® are registered trademarks of Apple Inc., registered in the U.S. and other countries. The *Bluetooth*® word mark and logos are registered trademarks owned by *Bluetooth* SIG, Inc. and any use of such marks by Samson Technologies is under license. Other trademarks and trade names are those of their respective owners.