



RIVALE PROFILE

PHOTOMETRY



AYRTON
Digital Lighting



Total Flux	30000 lm (@zoom 128, fan mode STAGE, Sphere)
-------------------	--

CCT @ light source engine	7400 (±400K)
CCT @ open	6500 (±500K)
Ra @ open	70 (±2)
TLCI	43
TM-30	Rf: 69 Rg: 93

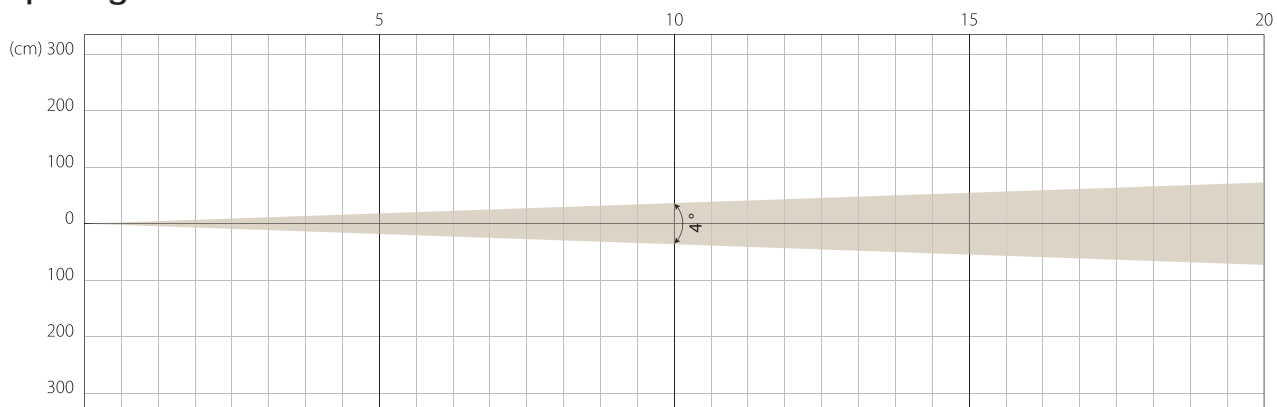
Fan Mode	Noise Level (dBA)	by Goniometer (lm)	by Sphere (lm)
Auto	41.5	22779	28700
Stage	43.1	22860	29260
Silence	33.5	14326	17200
Super Silence	32.4	10061	12000

Note: noise measured @1m distance, static status, ambient 31 dBA.

Voltage / Power	100-240V, 50-60Hz	700 W
Fixture Dimension / Weight	360 x 675.5 x 315 mm	28 kg
Packing Dimension / Weight	485 x 560 x 565 mm	41 kg

MIN ZOOM

Beam Opening

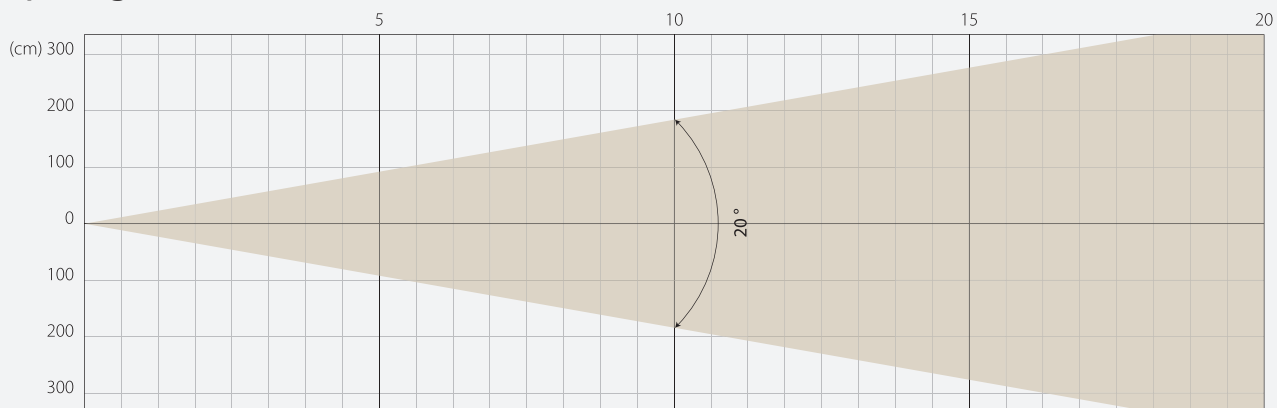


Intensity

Distance (m)	5		10		15		20	
unit	lux	diameter	lux	diameter	lux	diameter	lux	diameter
White	110063	0,35	27516	0,7	12229	1,05	6879	1,4

MIDDLE ZOOM

Beam Opening

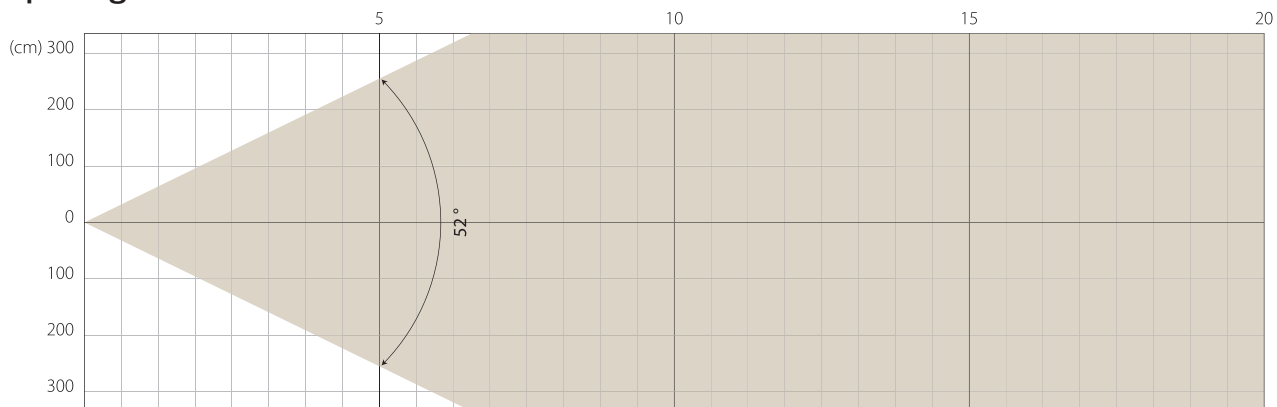


Intensity

Distance (m)	5		10		15		20	
unit	lux	diameter	lux	diameter	lux	diameter	lux	diameter
White	15199	1,76	3800	3,53	1689	5,29	950	7,05

MAX ZOOM

Beam Opening



Intensity

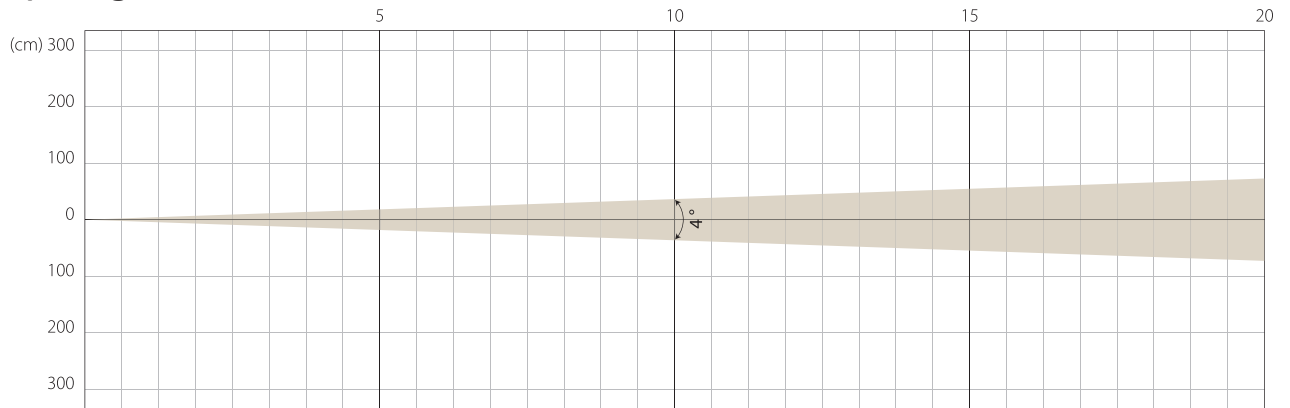
Distance (m)	5		10		15		20	
unit	lux	diameter	lux	diameter	lux	diameter	lux	diameter
White	1715	4,88	429	9,75	191	14,63	107	19,51

STAGE MODE

NATIVE CRI GREATER THAN 70

MIN ZOOM

Beam Opening

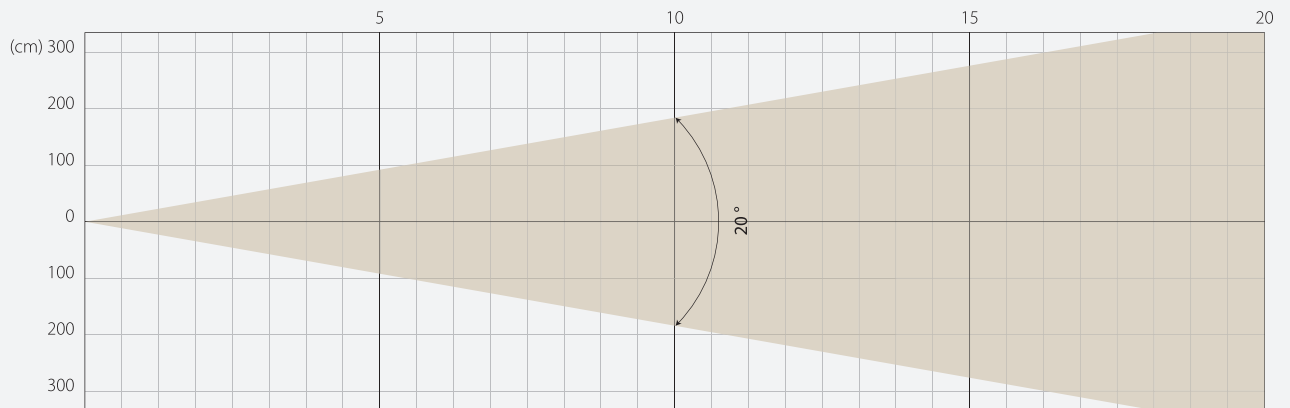


Intensity

Distance (m)	5		10		15		20	
unit	lux	diameter	lux	diameter	lux	diameter	lux	diameter
White	110499	0,35	27625	0,7	12278	1,05	6906	1,4

MIDDLE ZOOM

Beam Opening

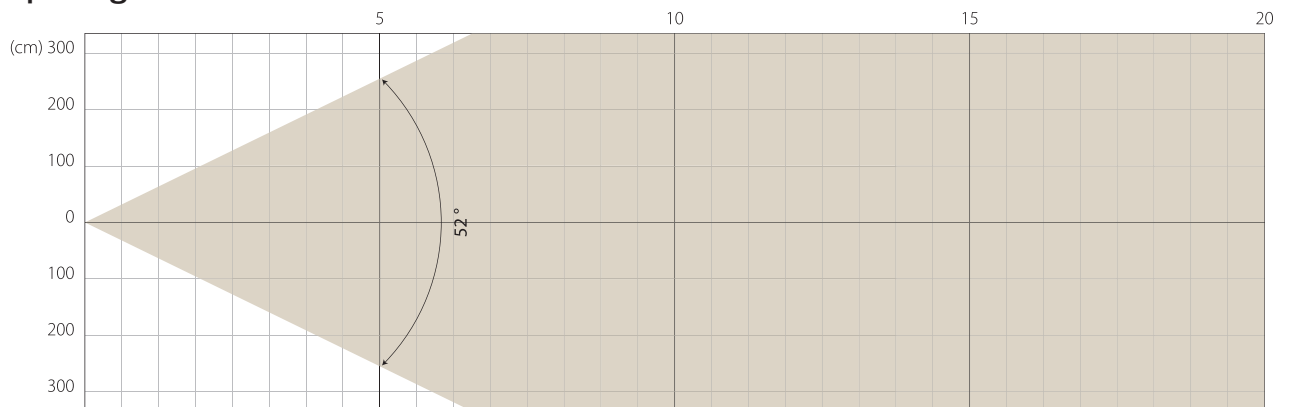


Intensity

Distance (m)	5		10		15		20	
unit	lux	diameter	lux	diameter	lux	diameter	lux	diameter
White	15409	1,76	3852	3,53	1712	5,29	963	7,05

MAX ZOOM

Beam Opening

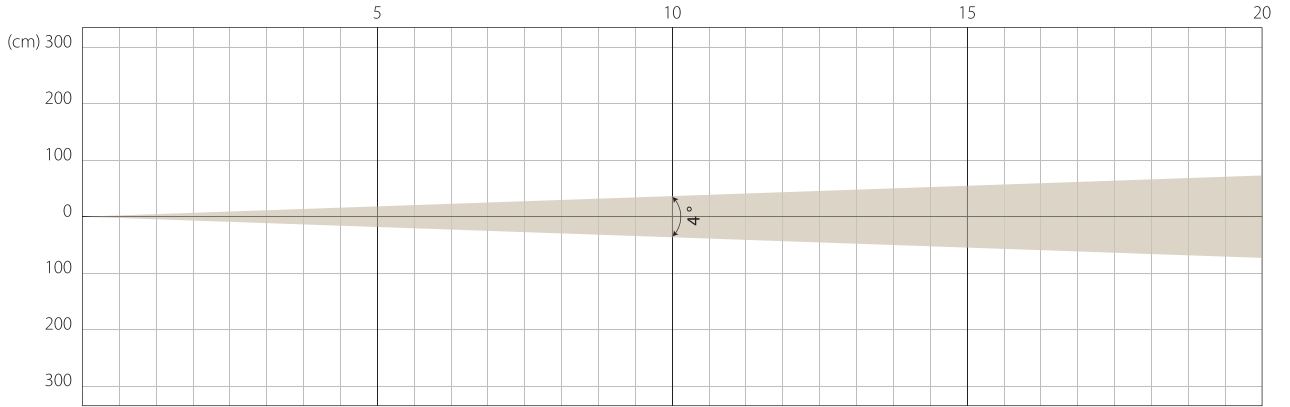


Intensity

Distance (m)	5		10		15		20	
unit	lux	diameter	lux	diameter	lux	diameter	lux	diameter
White	1734	4,88	434	9,75	193	14,63	108	19,51

MIN ZOOM

Beam Opening

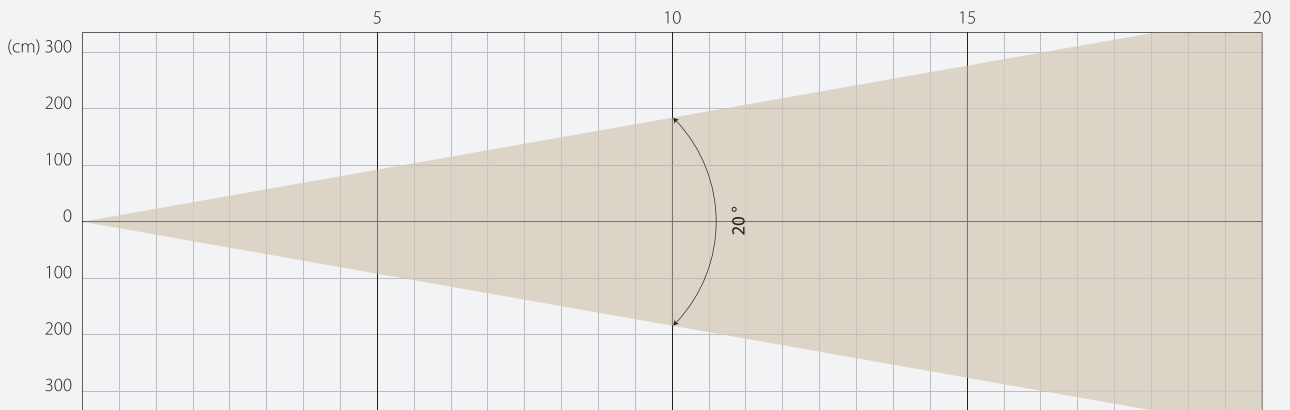


Intensity

Distance (m)	5		10		15		20	
unit	lux	diameter	lux	diameter	lux	diameter	lux	diameter
White	69586	0,35	17396	0,7	7732	1,05	4349	1,4

MIDDLE ZOOM

Beam Opening

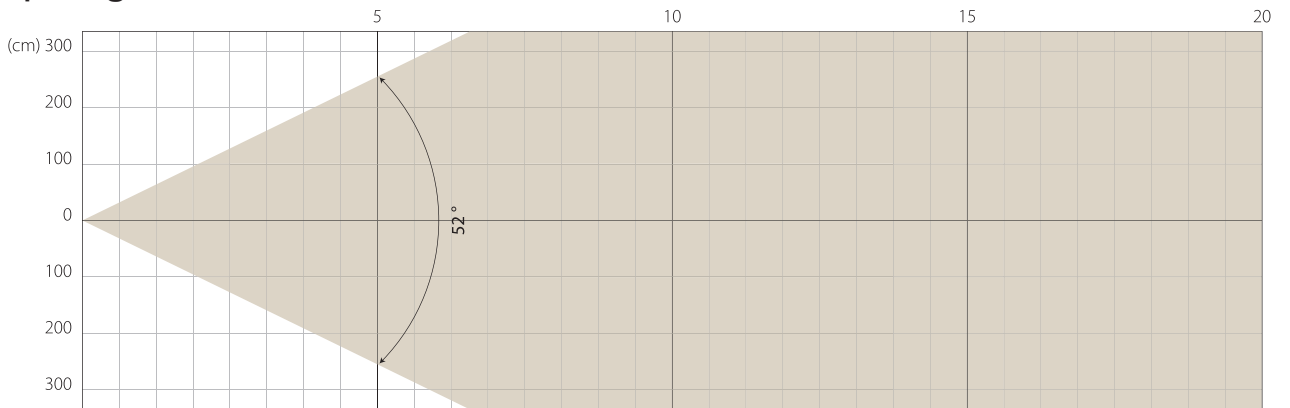


Intensity

Distance (m)	5		10		15		20	
unit	lux	diameter	lux	diameter	lux	diameter	lux	diameter
White	9526	1,76	2382	3,53	1058	5,29	595	7,05

MAX ZOOM

Beam Opening



Intensity

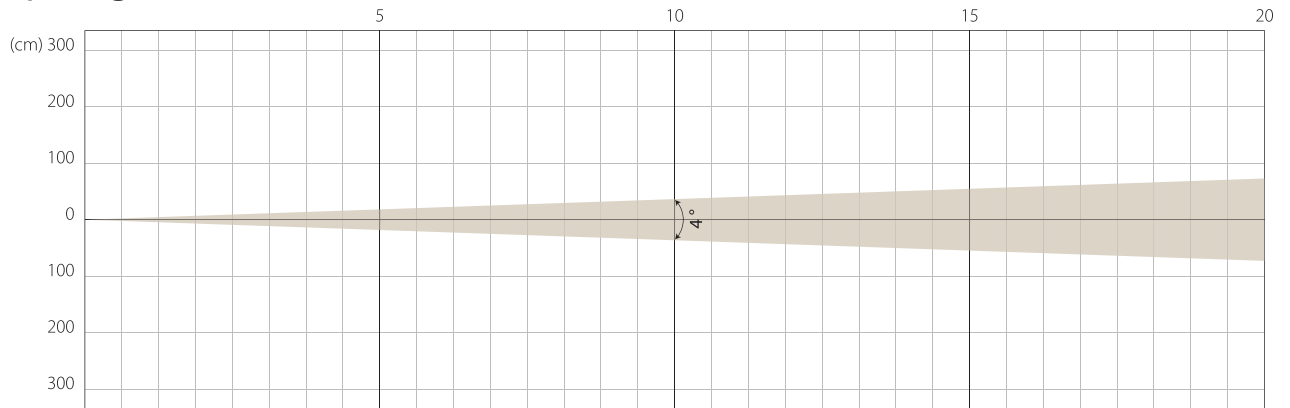
Distance (m)	5		10		15		20	
unit	lux	diameter	lux	diameter	lux	diameter	lux	diameter
White	1051	4,88	263	9,75	117	14,63	66	19,51

SUPER SILENCE MODE

NATIVE CRI GREATER THAN 70

MIN ZOOM

Beam Opening

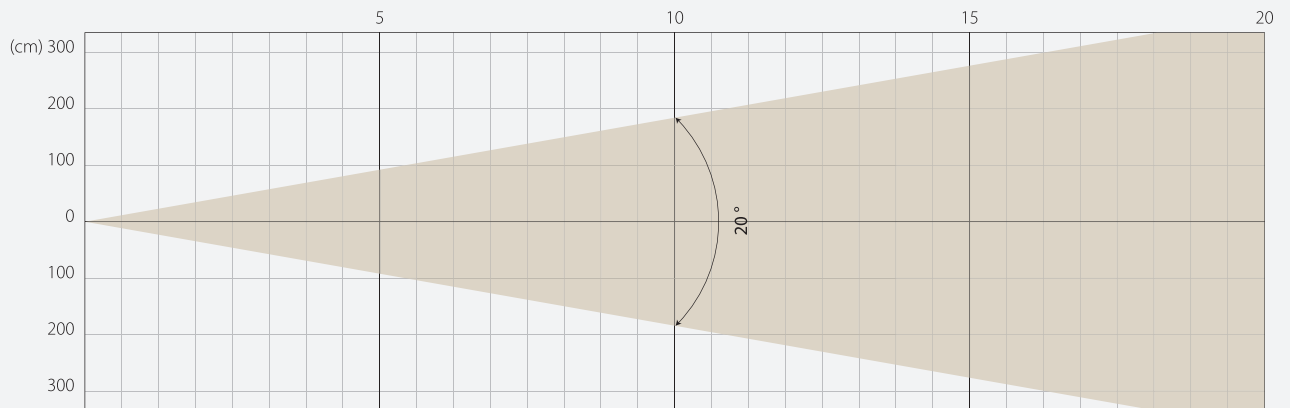


Intensity

Distance (m)	5		10		15		20	
unit	lux	diameter	lux	diameter	lux	diameter	lux	diameter
White	46651	0,35	11663	0,7	5183	1,05	2916	1,4

MIDDLE ZOOM

Beam Opening

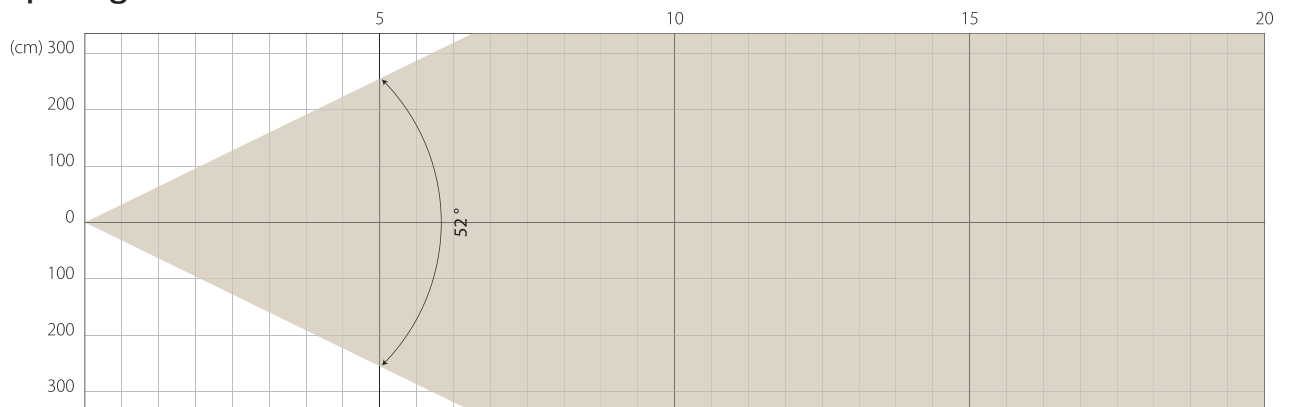


Intensity

Distance (m)	5		10		15		20	
unit	lux	diameter	lux	diameter	lux	diameter	lux	diameter
White	6536	1,76	1634	3,53	726	5,29	408	7,05

MAX ZOOM

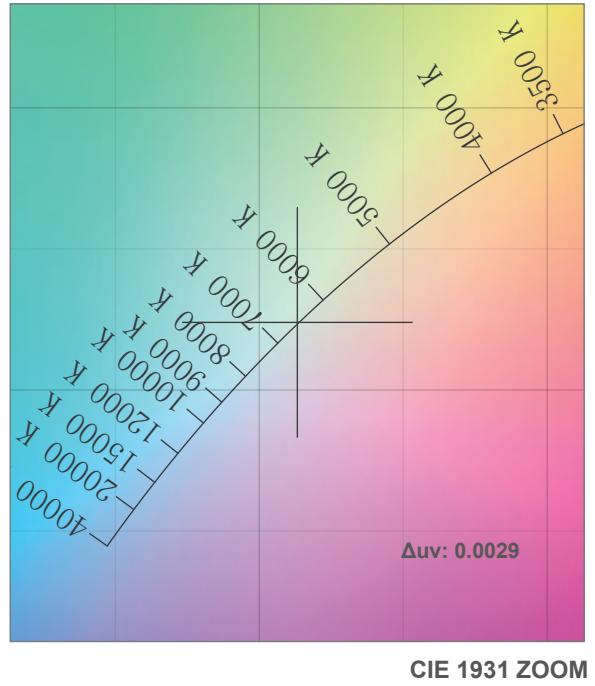
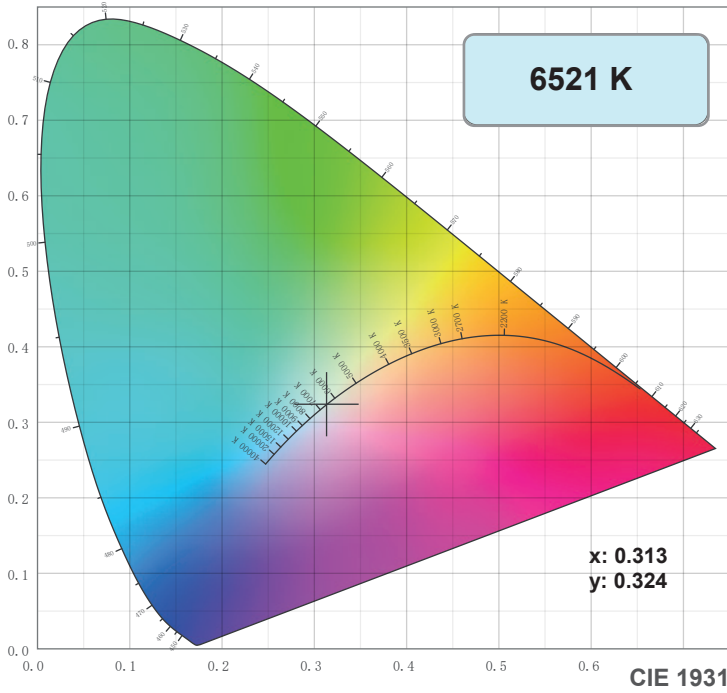
Beam Opening



Intensity

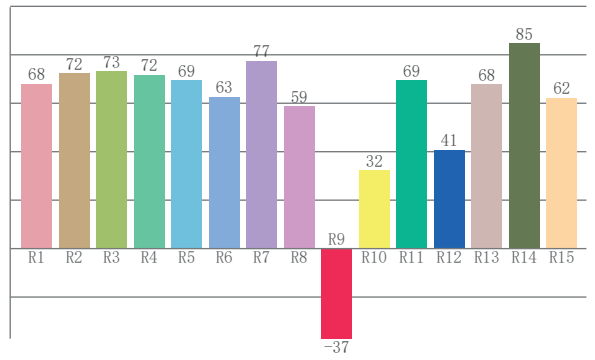
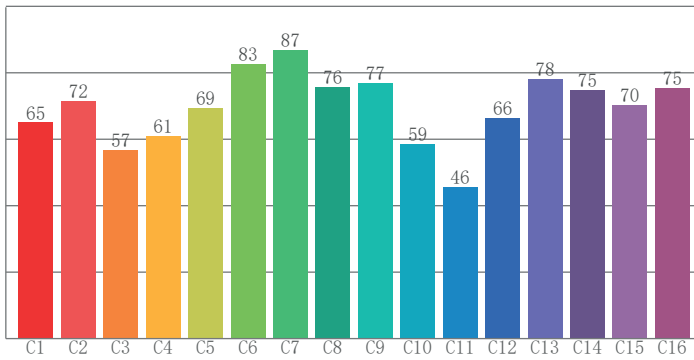
Distance (m)	5		10		15		20	
unit	lux	diameter	lux	diameter	lux	diameter	lux	diameter
White	730	4,88	182	9,75	81	14,63	46	19,51

COLOR DETAILS



TM-30: 69.0

CRI: 69.2 (R1-R8)



CRI R values, only R1-R8 are used to calculate final CRI value

R1	R2	R3	R4	R5	R6	R7	R8	R9	R10	R11	R12	R13	R14	R15
68.1	72.3	73.1	71.7	69.4	62.7	77.5	58.7	-37.1	32.3	69.4	40.6	67.8	84.6	62.3

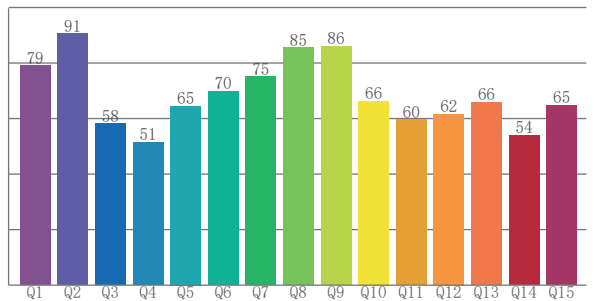
TM30 C values, 16 binned values out of total of 99 C values

C1	C2	C3	C4	C5	C6	C7	C8	C9	C10	C11	C12	C13	C14	C15	C16
65.0	71.5	56.8	61.1	69.5	82.6	86.9	75.7	76.9	58.6	45.5	66.5	78.2	74.8	70.2	75.5

CQS Q values

Q1	Q2	Q3	Q4	Q5	Q6	Q7	Q8	Q9	Q10	Q11	Q12	Q13	Q14	Q15
79.0	90.5	58.1	51.4	64.6	69.8	75.1	85.5	86.1	66.4	59.6	61.7	65.7	54.0	64.7

CQS: 66.7



Color parameters

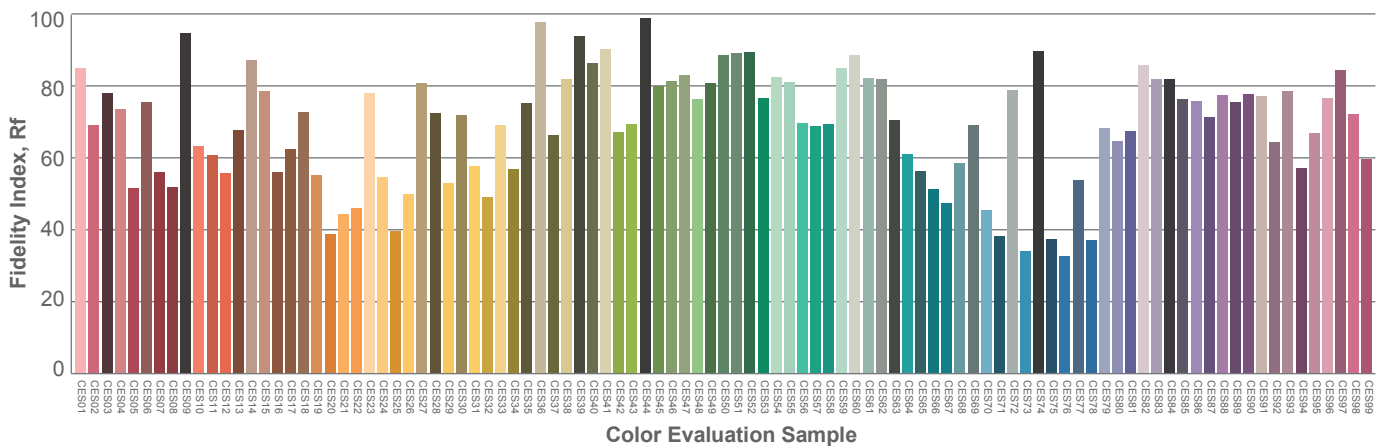
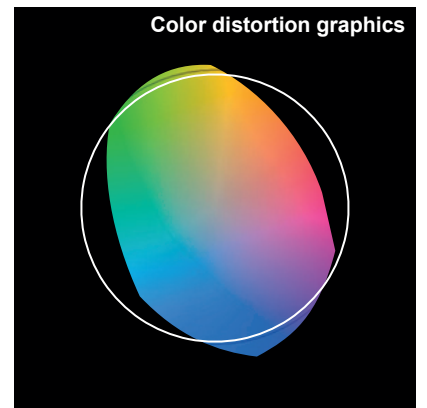
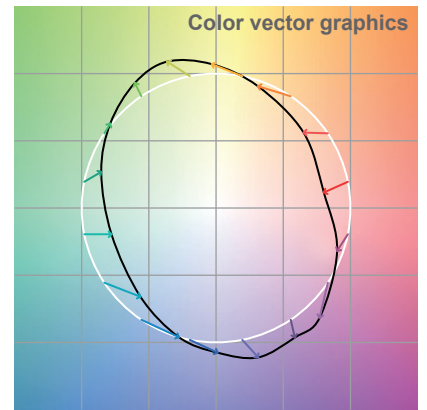
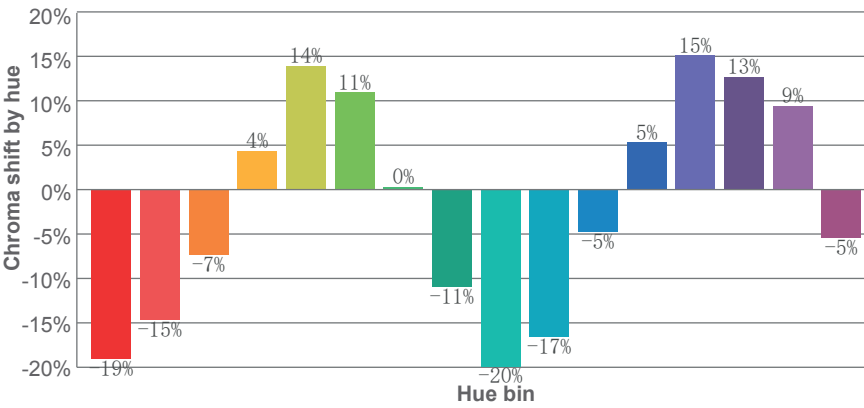
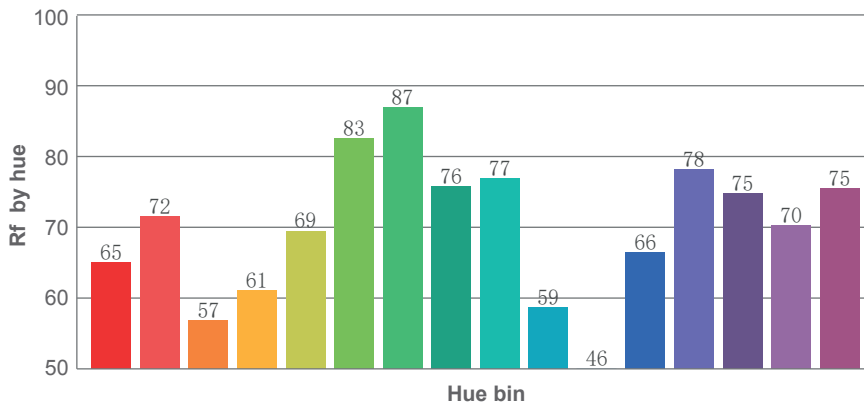
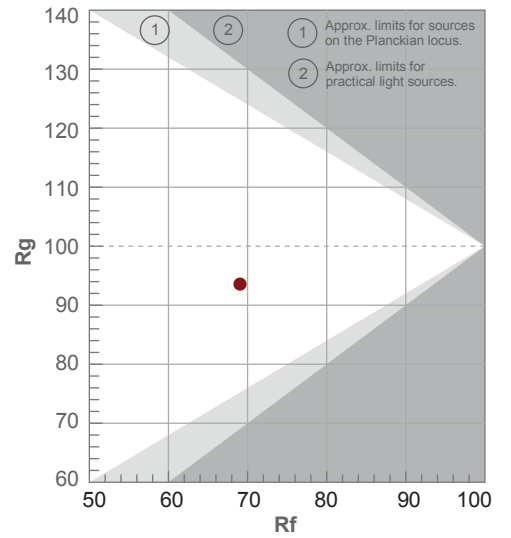
Color temperature	Color rendering index	Red component	Color fidelity	Color gamut	Color quality scale	Color coordinate cie 1931	Color coordinate cie 1931	Color coordinate	Color coordinate	Color deviation from black body
CCT	CRI	CRI R9	TM30 Rf	TM30 Rg	CQS	x	y	u	v	Δuv
6521 K	69.2	-37.1	69.0	93.6	66.7	0.313	0.324	0.200	0.310	0.0029

TM-30 DETAILS

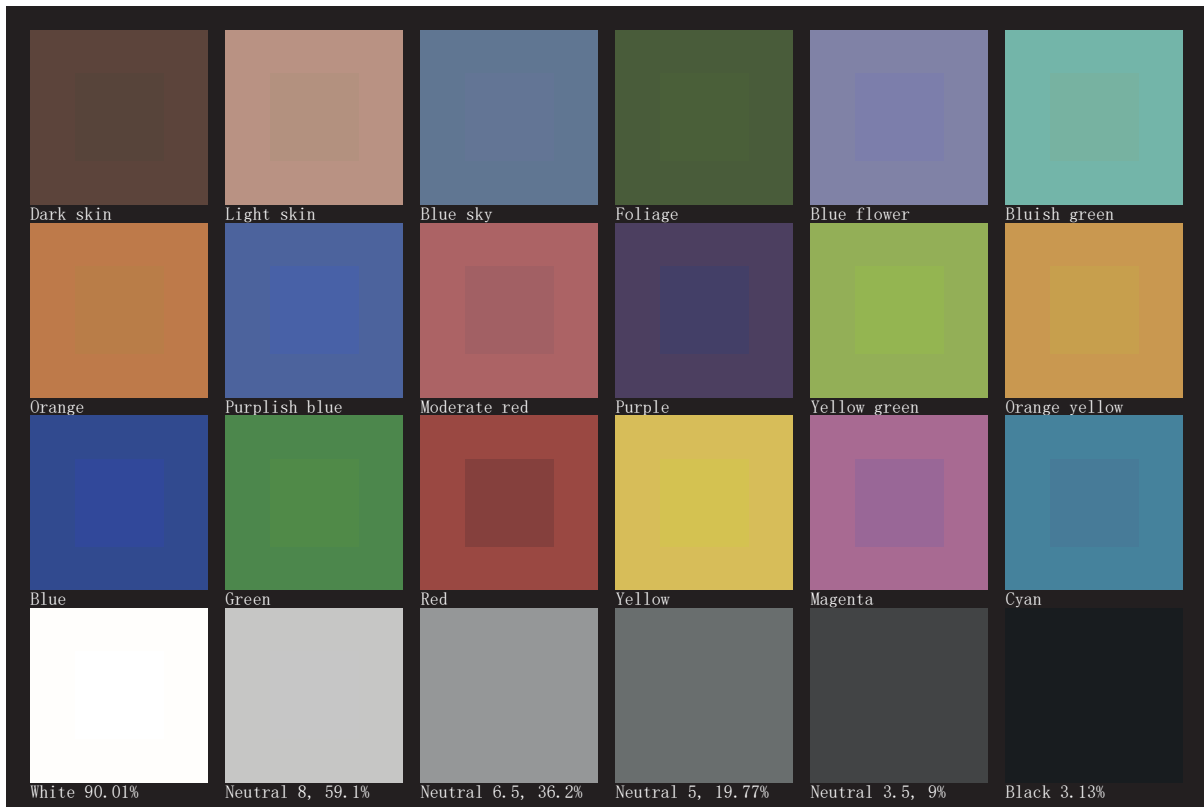
Rf 69.0
Fidelity index Rf

Rg 93.6
Gamut index Rg

Hue Bin	R _f	Shifts (%)	
		Chroma	Hue
1	65	-19%	-4%
2	72	-15%	10%
3	57	-7%	24%
4	61	4%	24%
5	69	14%	14%
6	83	11%	-1%
7	87	0%	-8%
8	76	-11%	-10%
9	77	-20%	4%
10	59	-17%	24%
11	46	-5%	30%
12	66	5%	22%
13	78	15%	9%
14	75	13%	-5%
15	70	9%	-25%
16	75	-5%	-14%



TLCI 43





AYRTON

Digital Lighting