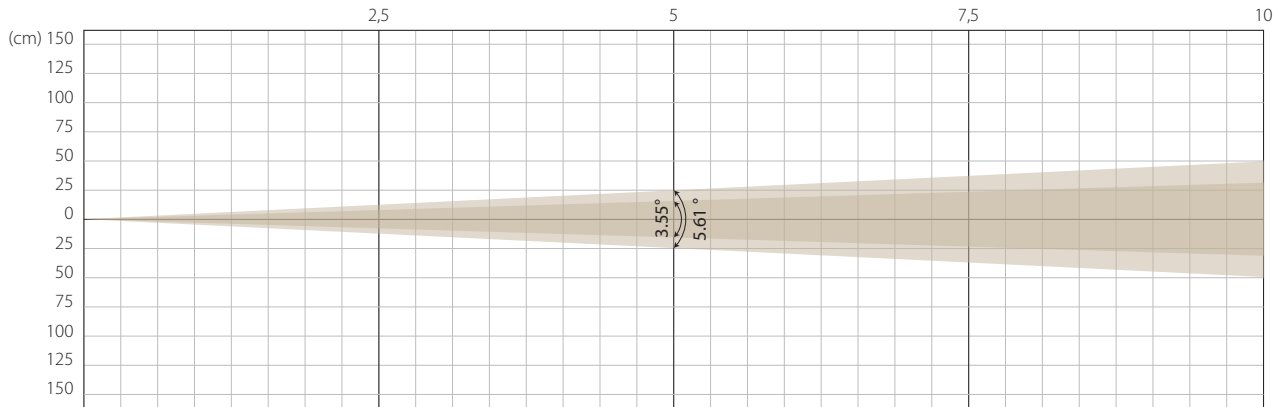


MIN ZOOM

Beam opening

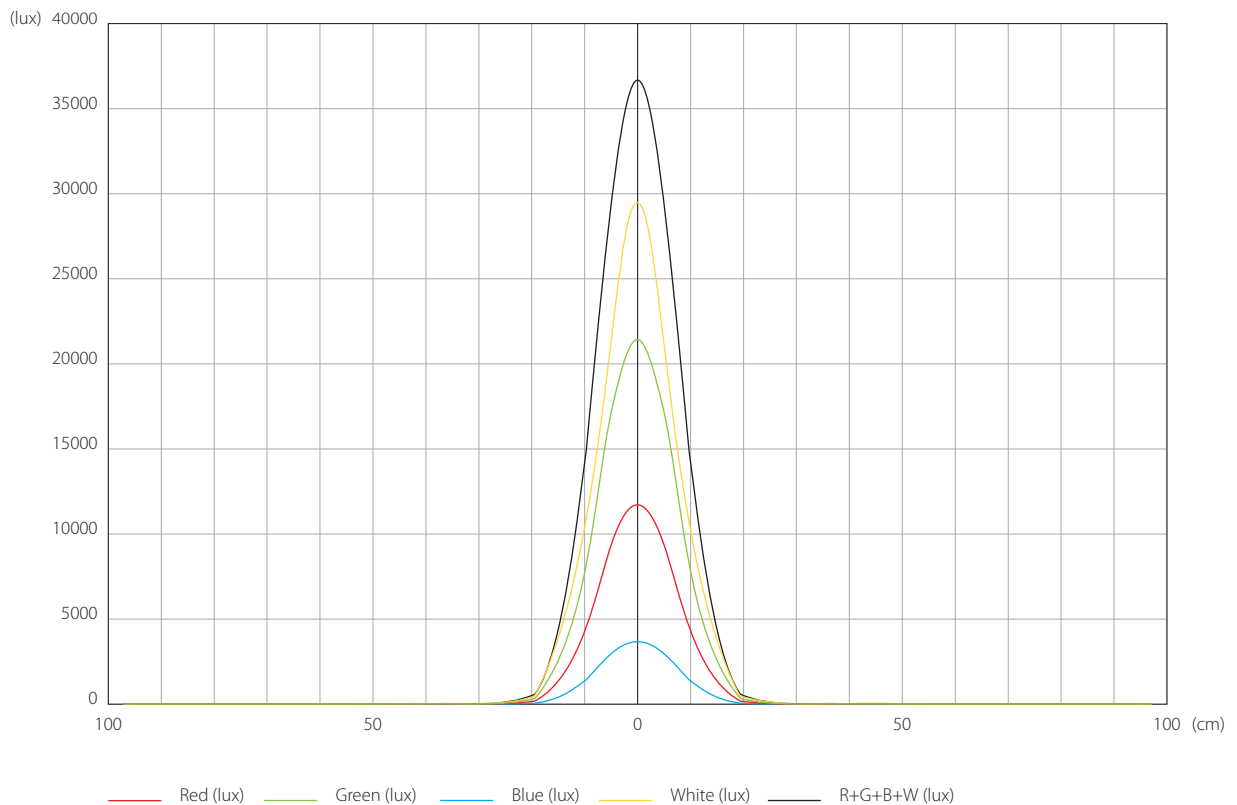


Diameter 1/2 peak (m) 0.311
Diameter 1/10 peak (m) 0.49

Intensity

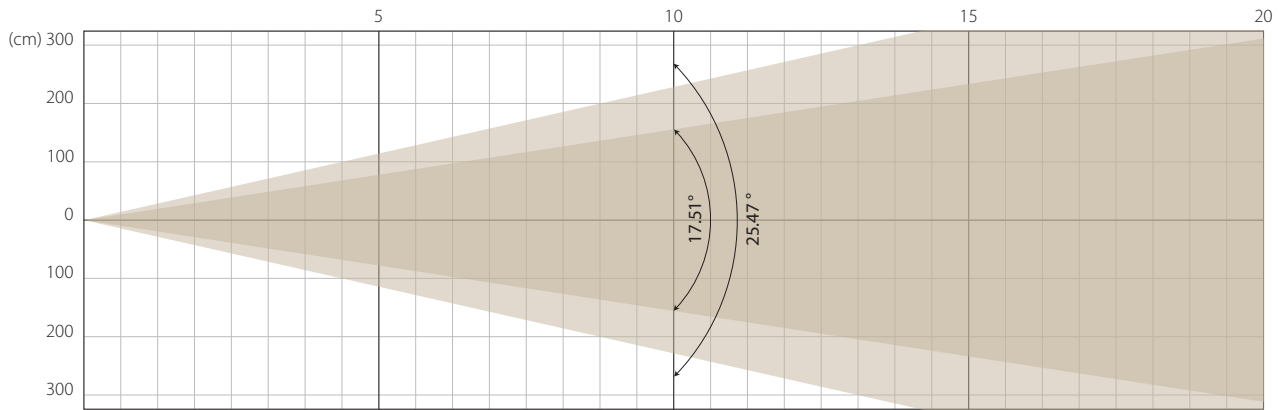
Distance (m)	2,5		5		7,5		10		12,5		15	
unit	lux	ft CD	lux	ft CD	lux	ft CD	lux	ft CD	lux	ft CD	lux	ft CD
Red	47880	4448	11970	1112	5320	494	2993	278	1915	178	1330	124
Green	87560	8134	21890	2034	9729	904	5473	508	3502	325	2432	226
Blue	14808	1376	3702	344	1645	153	926	86	592	55	411	38
White	118720	11029	29680	2757	13191	1225	7420	689	4749	441	3298	306
R+G+B+W	153800	14288	38450	3572	17089	1588	9613	893	6152	572	4272	397

Illuminance distribution (5m)



MIDDLE ZOOM

Beam opening

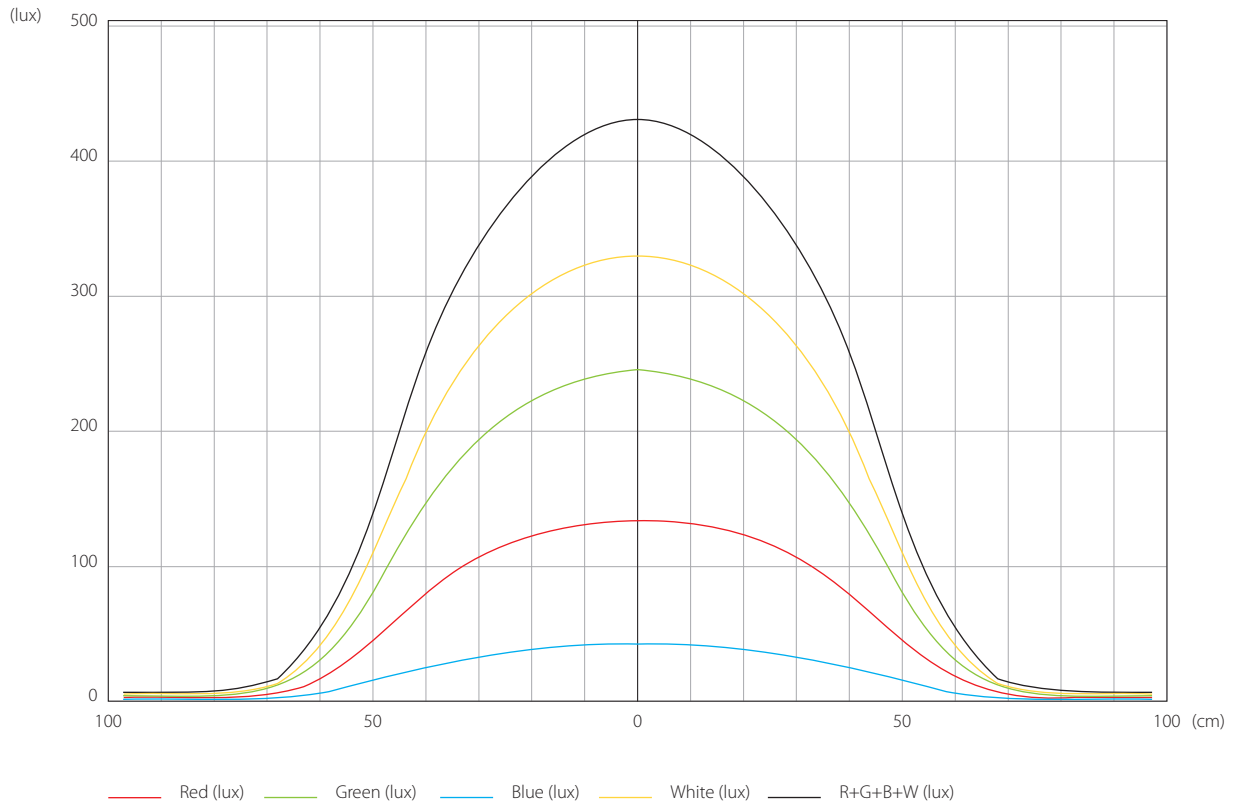


Diameter 1/2 peak (m) 1.54
Diameter 1/10 peak (m) 2.26

Intensity

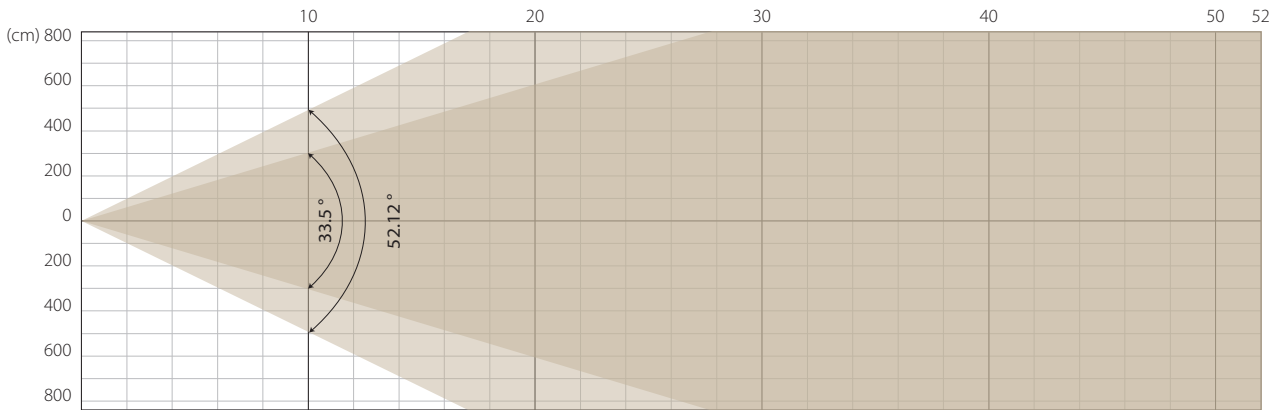
Distance (m)	2,5		5		7,5		10		12,5		15	
	lux	ft CD	lux	ft CD	lux	ft CD	lux	ft CD	lux	ft CD	lux	ft CD
Red	2820	262	705	65	313	29	176	16	113	10	78	7
Green	5692	529	1423	132	632	59	356	33	228	21	158	15
Blue	1172	109	293	27	130	12	73	7	47	4	33	3
White	7496	696	1874	174	833	77	469	44	300	28	208	19
R+G+B+W	10296	956	2574	239	1144	106	644	60	412	38	286	27

Illuminance distribution (5m)



MAX ZOOM

Beam opening



Diameter 1/2 peak (m) 3.01
Diameter 1/10 peak (m) 4.89

Intensity

Distance (m)	2,5		5		7,5		10		12,5		15	
	lux	ft CD	lux	ft CD	lux	ft CD	lux	ft CD	lux	ft CD	lux	ft CD
Red	800	74	200	19	89	8	50	5	32	3	22	2
Green	1736	161	434	40	193	18	109	10	69	6	48	4
Blue	372	35	93	9	41	4	23	2	15	1	10	1
White	2180	203	545	51	242	23	136	13	87	8	61	6
R+G+B+W	3048	283	762	71	339	31	191	18	122	11	85	8

Illuminance distribution (5m)

