



# PERSEO BEAM

PHOTOMETRY



**AYRTON**  
Digital Lighting





<b>Total Flux</b>	18143 lm (@zoom 128, integrating sphere measurement, Fan mode auto)
-------------------	---

<b>CCT @LED engin</b>	9000 (±500K)
<b>CCT @open</b>	6800 (±500K)
<b>Ra @open</b>	70 (±2)
<b>TLCI</b>	45
<b>TM-30</b>	Rf: 70.1 Rg: 94.0

<b>Fan Mode</b>	<b>Noise Level (dBA)</b>	<b>by Goniometer (lm)</b>	<b>by Sphere (lm)</b>
<b>Auto</b>	44,8	15263	18143
<b>Stage</b>	49,1	15565	18377
<b>Silence</b>	39,1	10164	12646
<b>Super Silence</b>	34,8	8810	10648

Note: noise measured @1m distance, static status, ambient 31 dBA.

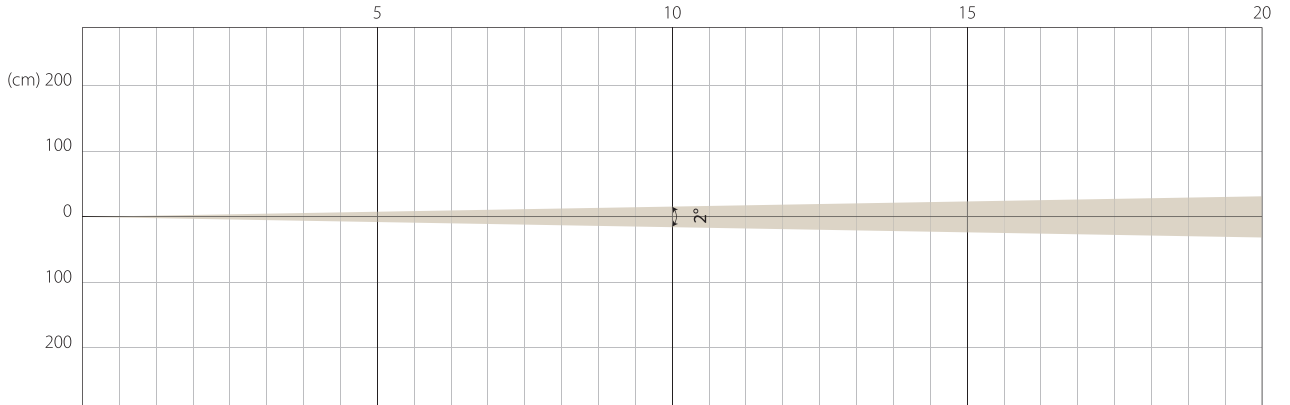
<b>Voltage / Power</b>	100-240V, 50-60Hz	700 W
<b>Fixture Dimension / Weight</b>	445 x 743 x 273 mm	39.5 kg
<b>Packing Dimension / Weight</b>	660 x 675 x 560 mm	57 kg

# AUTO MODE

NATIVE CRI GREATER THAN 70

MIN ZOOM

## Beam Opening

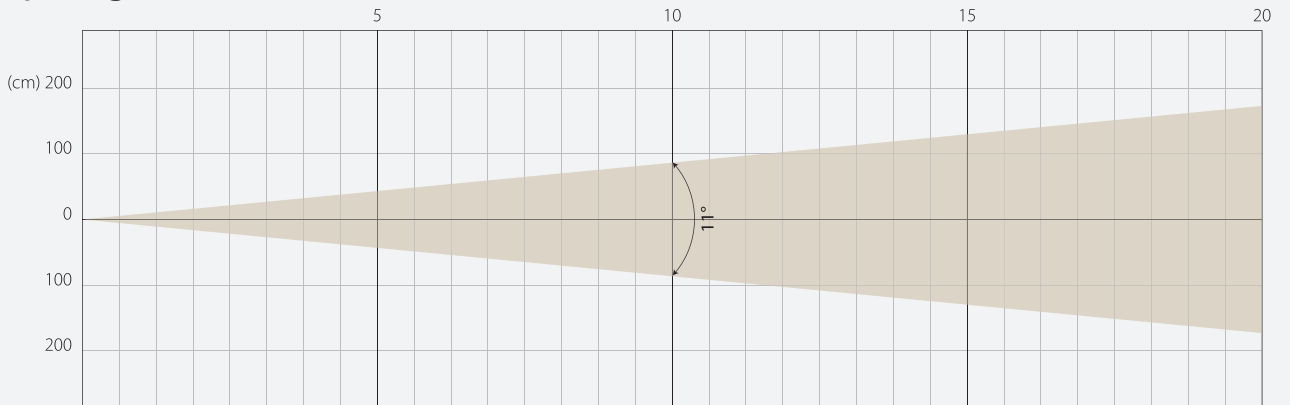


## Intensity

Distance (m)	5		10		15		20	
unit	lux	diameter	lux	diameter	lux	diameter	lux	diameter
White	156914	0,17	39229	0,35	17435	0,52	9807	0,7

MIDDLE ZOOM

## Beam Opening

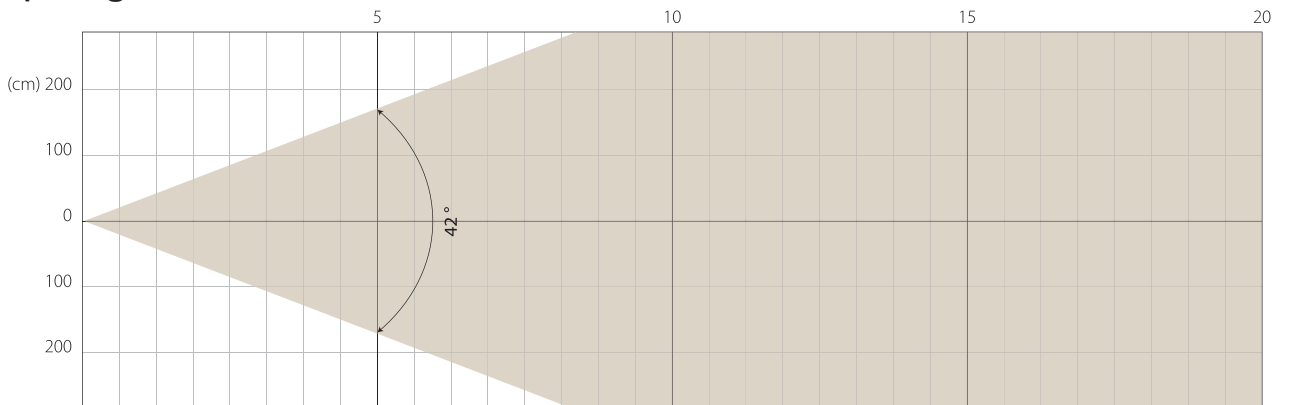


## Intensity

Distance (m)	5		10		15		20	
unit	lux	diameter	lux	diameter	lux	diameter	lux	diameter
White	17678	0,96	4420	1,93	1964	2,89	1105	3,85

MAX ZOOM

## Beam Opening



## Intensity

Distance (m)	5		10		15		20	
unit	lux	diameter	lux	diameter	lux	diameter	lux	diameter
White	2233	3,84	558	7,68	248	11,52	140	15,35

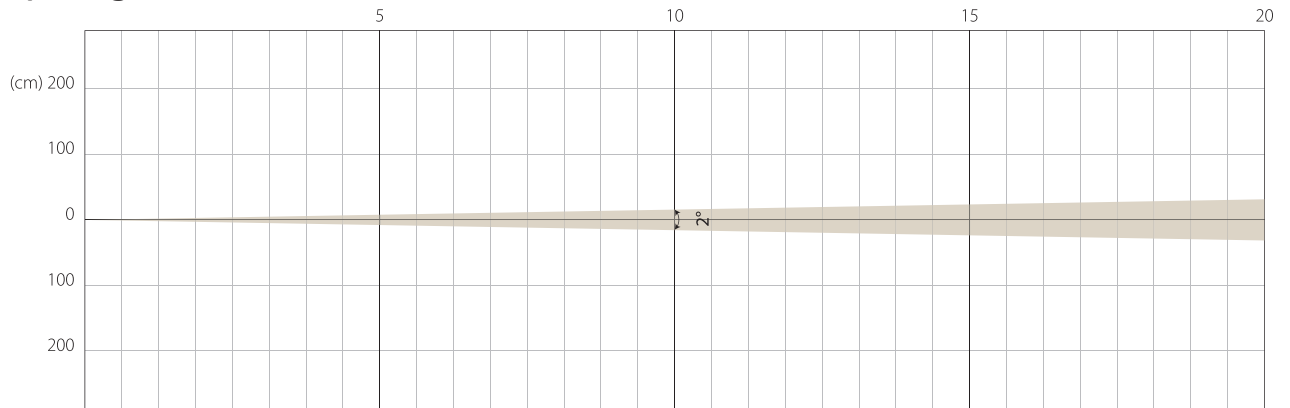
Note: Measurement done with Goniometer

# STAGE MODE

NATIVE CRI GREATER THAN 70

MIN ZOOM

## Beam Opening

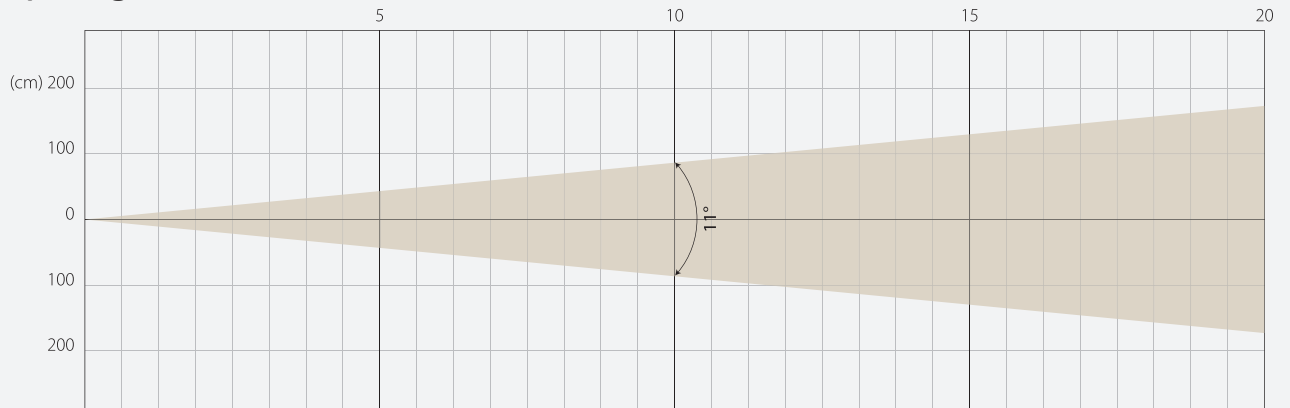


## Intensity

Distance (m)	5		10		15		20	
unit	lux	diameter	lux	diameter	lux	diameter	lux	diameter
White	164492	0,17	41123	0,35	18276	0,52	10280	0,7

MIDDLE ZOOM

## Beam Opening

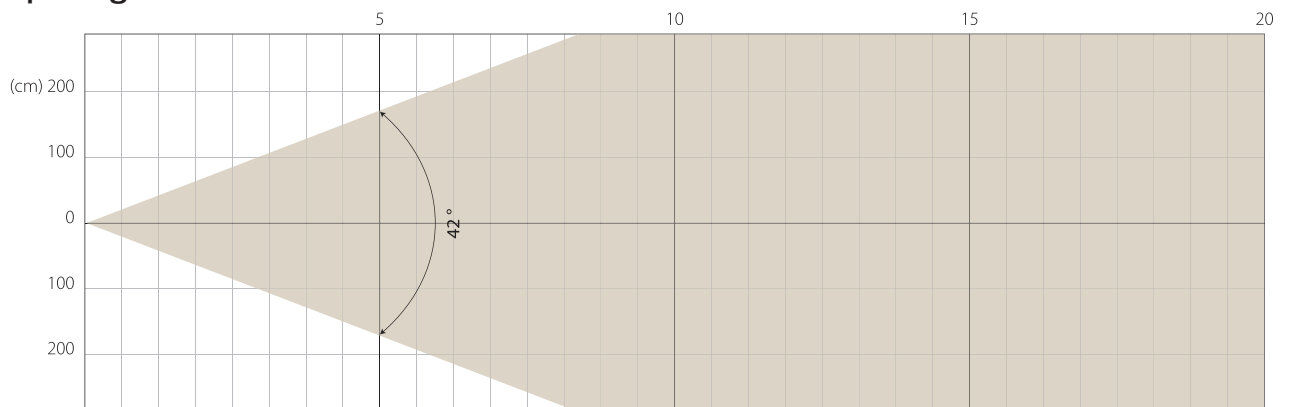


## Intensity

Distance (m)	5		10		15		20	
unit	lux	diameter	lux	diameter	lux	diameter	lux	diameter
White	17907	0,96	4477	1,93	1990	2,89	1119	3,85

MAX ZOOM

## Beam Opening



## Intensity

Distance (m)	5		10		15		20	
unit	lux	diameter	lux	diameter	lux	diameter	lux	diameter
White	2267	3,84	567	7,68	252	11,52	142	15,35

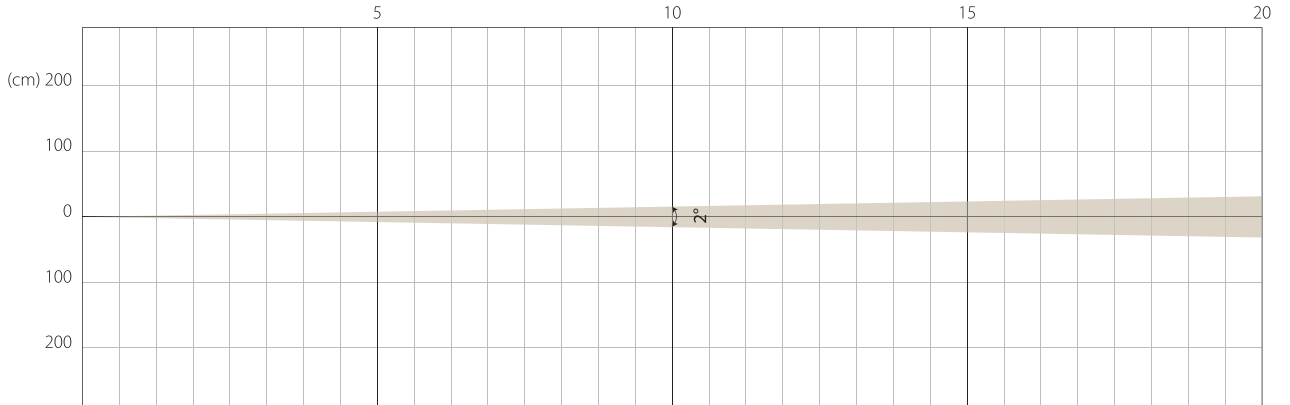
Note: Measurement done with Goniometer

# SILENCE MODE

NATIVE CRI GREATER THAN 70

MIN ZOOM

## Beam Opening

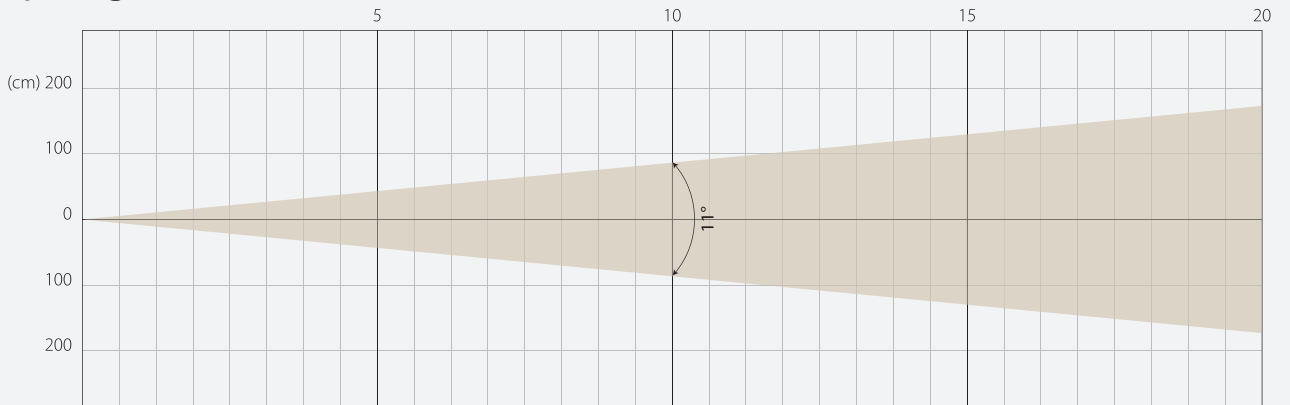


## Intensity

Distance (m)	5		10		15		20	
unit	lux	diameter	lux	diameter	lux	diameter	lux	diameter
White	119202	0,17	29801	0,35	13245	0,52	7450	0,7

MIDDLE ZOOM

## Beam Opening

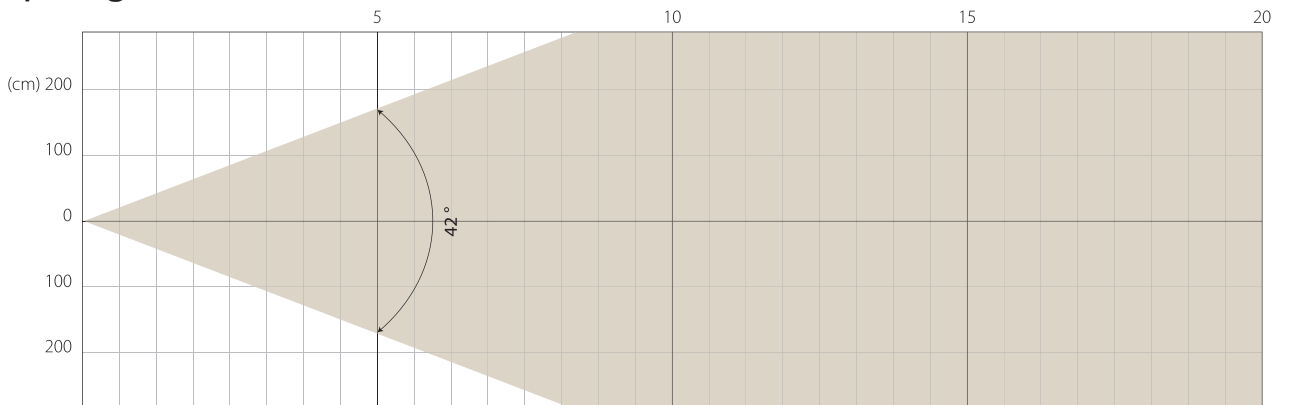


## Intensity

Distance (m)	5		10		15		20	
unit	lux	diameter	lux	diameter	lux	diameter	lux	diameter
White	11434	0,96	2858	1,93	1270	2,89	715	3,85

MAX ZOOM

## Beam Opening



## Intensity

Distance (m)	5		10		15		20	
unit	lux	diameter	lux	diameter	lux	diameter	lux	diameter
White	1447	3,84	362	7,68	161	11,52	90	15,35

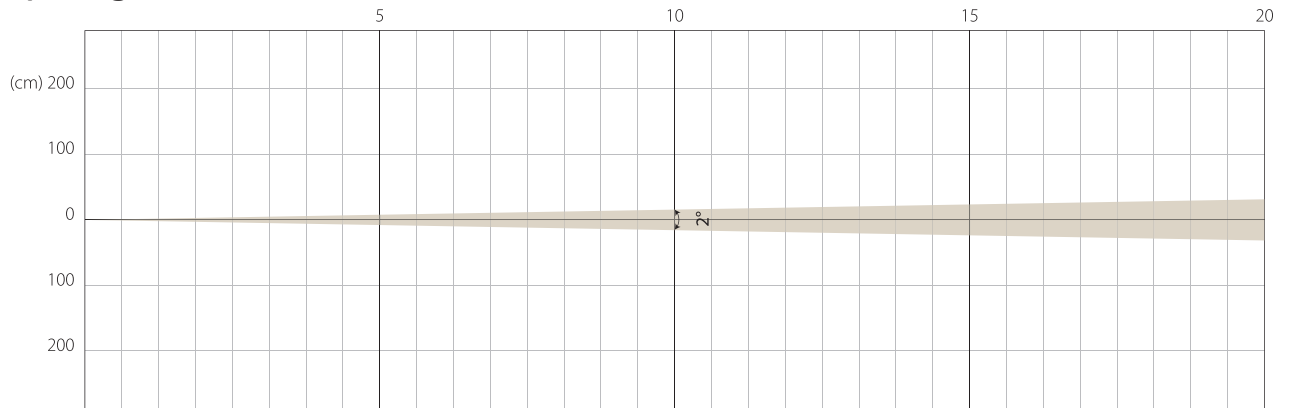
Note: Measurement done with Goniometer

# SUPER SILENCE MODE

NATIVE CRI GREATER THAN 70

MIN ZOOM

## Beam Opening

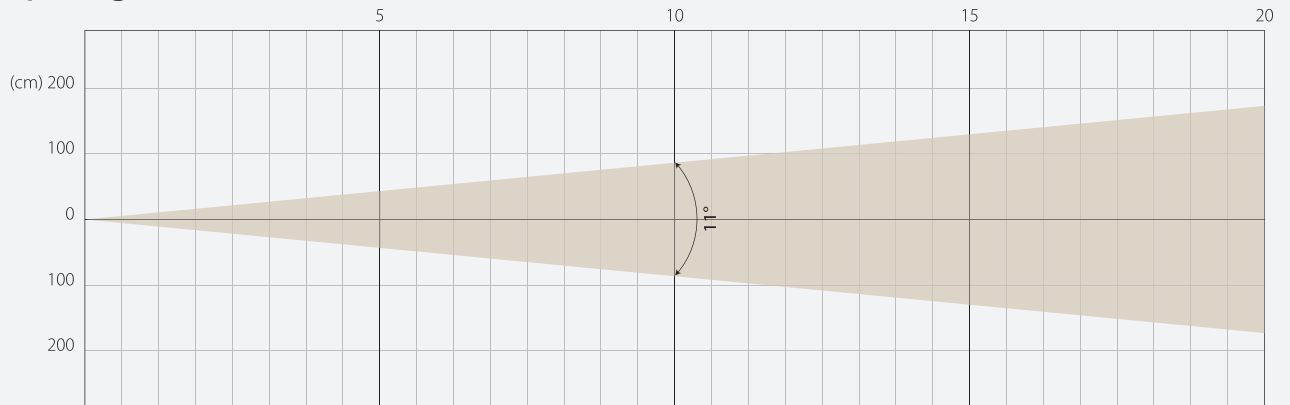


## Intensity

Distance (m)	5		10		15		20	
unit	lux	diameter	lux	diameter	lux	diameter	lux	diameter
White	97594	0,17	24398	0,35	10844	0,52	6100	0,7

MIDDLE ZOOM

## Beam Opening

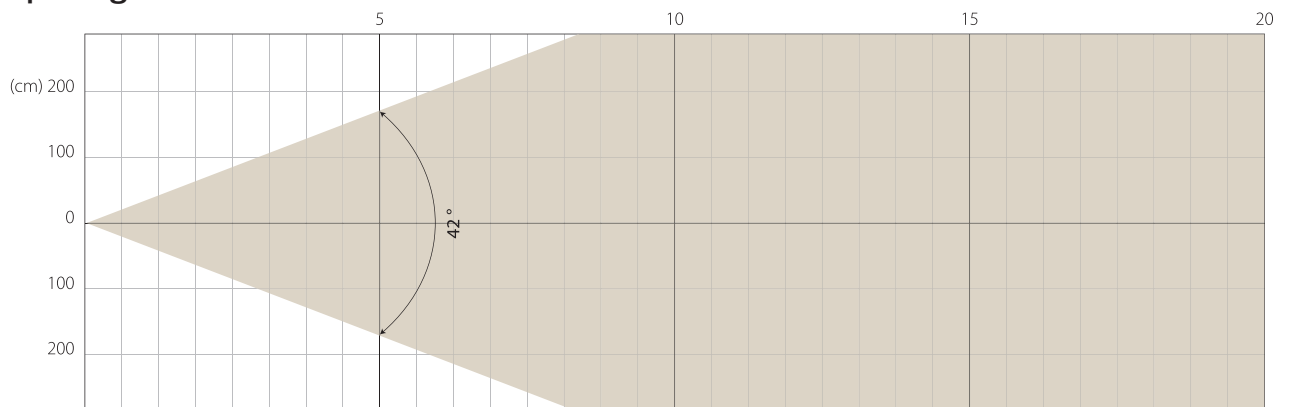


## Intensity

Distance (m)	5		10		15		20	
unit	lux	diameter	lux	diameter	lux	diameter	lux	diameter
White	9514	0,96	2379	1,93	1057	2,89	595	3,85

MAX ZOOM

## Beam Opening

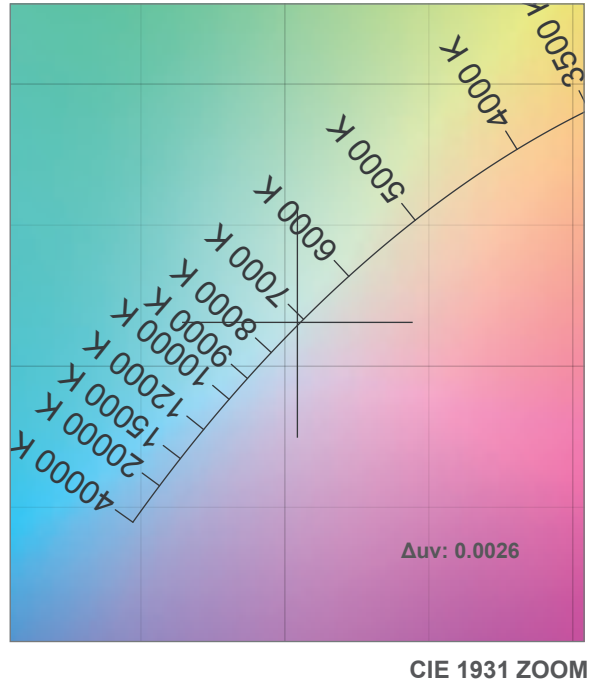
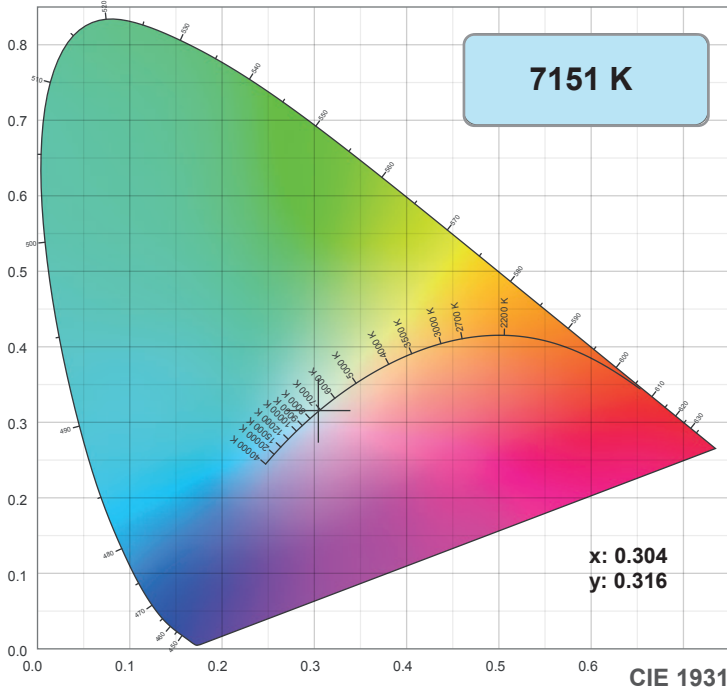


## Intensity

Distance (m)	5		10		15		20	
unit	lux	diameter	lux	diameter	lux	diameter	lux	diameter
White	1204	3,84	301	7,68	134	11,52	75	15,35

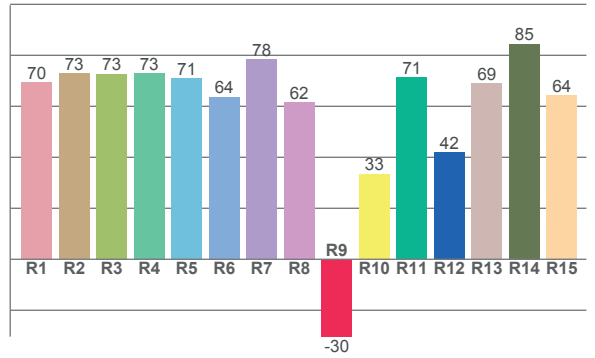
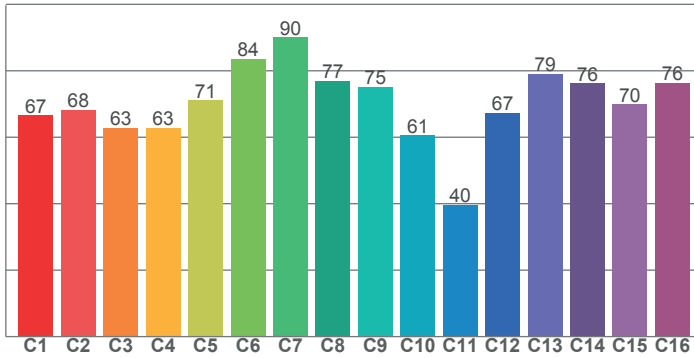
Note: Measurement done with Goniometer

# COLOR DETAILS



**TM-30: 70.1**

**CRI: 70.4 (R1-R8)**



CRI R values, only R1-R8 are used to calculate final CRI value

R1	R2	R3	R4	R5	R6	R7	R8	R9	R10	R11	R12	R13	R14	R15
69.5	72.9	72.8	73.0	71.1	63.7	78.3	61.7	-30.3	33.5	71.3	42.0	69.1	84.5	64.4

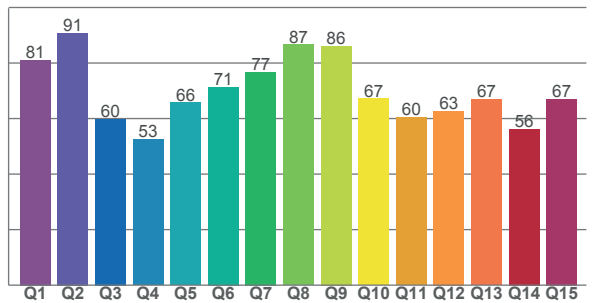
TM30 C values, 16 binned values out of total of 99 C values

C1	C2	C3	C4	C5	C6	C7	C8	C9	C10	C11	C12	C13	C14	C15	C16
66.5	68.3	62.8	62.8	71.1	83.5	90.0	77.0	75.2	60.6	39.7	67.3	79.0	76.2	69.8	76.3

CQS Q values

Q1	Q2	Q3	Q4	Q5	Q6	Q7	Q8	Q9	Q10	Q11	Q12	Q13	Q14	Q15
81.1	90.8	59.8	52.5	65.8	71.4	76.8	86.7	86.1	67.2	60.5	62.8	67.0	56.3	67.1

**CQS: 68.0**



## Color parameters

Color temperature	Color rendering index	Red component	Color fidelity	Color gamut	Color quality scale	Color coordinate cie 1931	Color coordinate cie 1931	Color coordinate	Color coordinate	Color deviation from black body
CCT	CRI	CRI R9	TM30 Rf	TM30 Rg	CQS	x	y	u	v	Δuv
7151 K	70.4	-30.3	70.1	94.0	68.0	0.304	0.316	0.197	0.306	0.0026

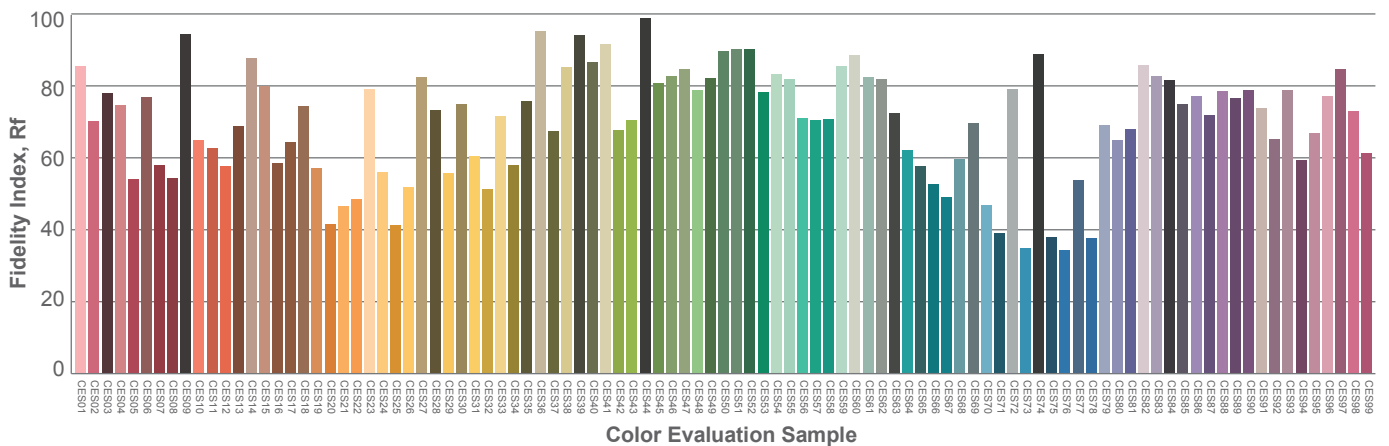
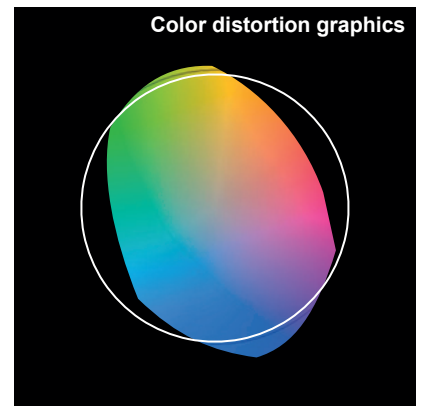
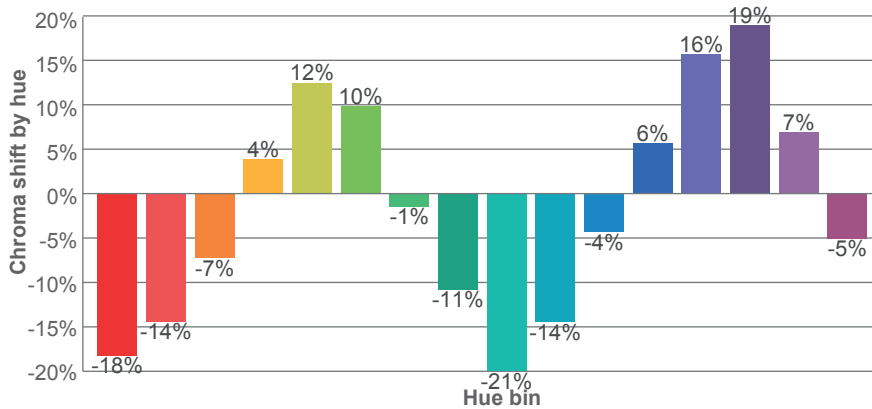
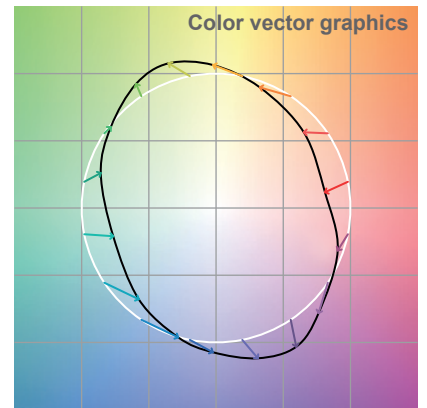
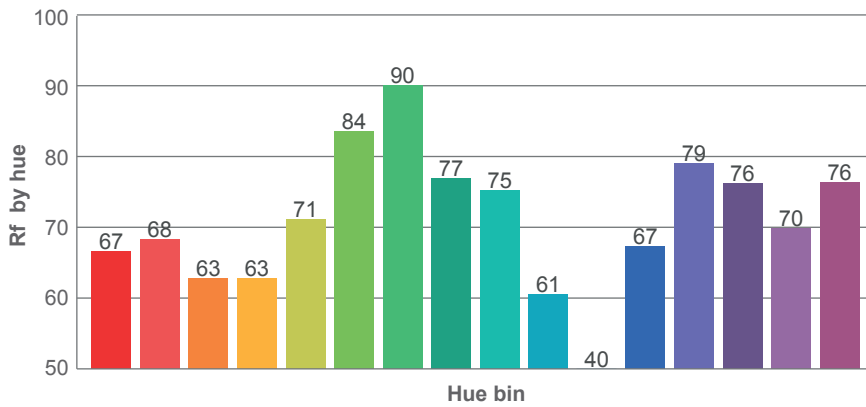
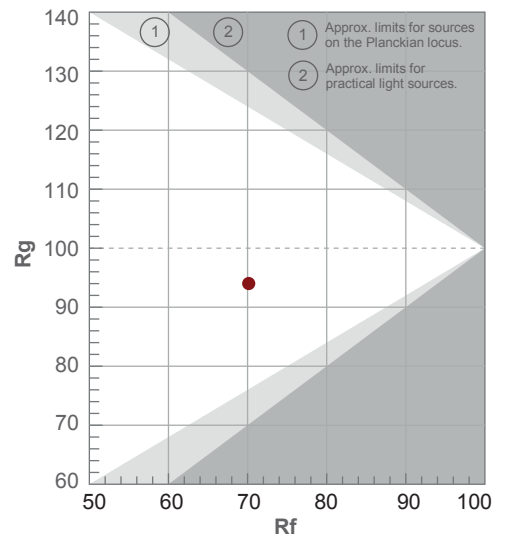


# TM-30 DETAILS

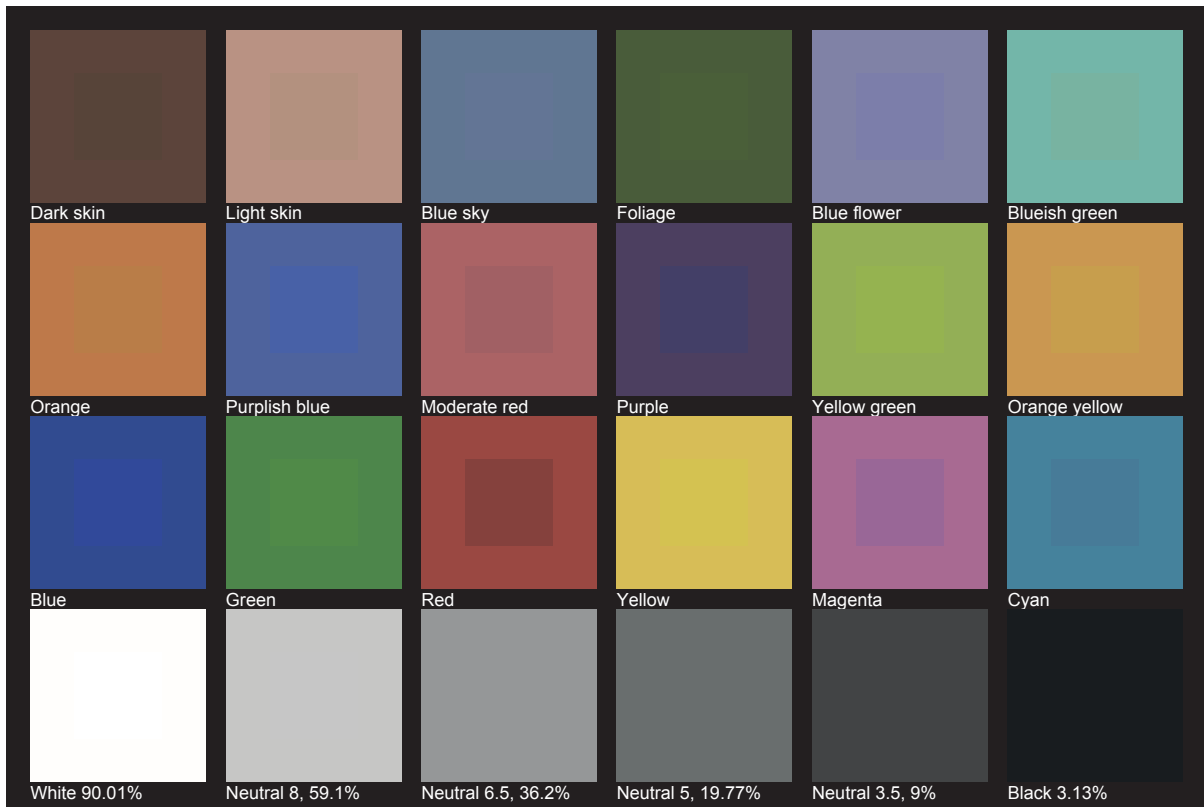
**Rf 70.1**  
Fidelity index Rf

**Rg 94.0**  
Gamut index Rg

Hue Bin	R <sub>f</sub>	Shifts (%)	
		Chroma	Hue
1	67	-18%	-4%
2	68	-14%	11%
3	63	-7%	23%
4	63	4%	23%
5	71	12%	14%
6	84	10%	-2%
7	90	-1%	-7%
8	77	-11%	-9%
9	75	-21%	6%
10	61	-14%	24%
11	40	-4%	30%
12	67	6%	19%
13	79	16%	9%
14	76	19%	-8%
15	70	7%	-23%
16	76	-5%	-13%



# TLCI 48







**AYRTON**

Digital Lighting