

PX277

PxArt +
Settings
Controller

MANUAL



TABLE OF CONTENTS

1. General description.....	3
2. Safety conditions.....	3
3. Description of controller elements.....	3
4. Turning the device on.....	4
5. Changing language version.....	4
6. Upgrade procedure.....	4
7. Dimensions.....	6
8. Technical data.....	6
Declaration of conformity.....	7

Manufacturer reserves the right to make modifications in order to improve device operation.

ver. 1.2

PXM Marek Żupnik spółka komandytowa
ul. Przemysłowa 12
30-701 Kraków, Poland

tel.: (12) 626 46 92
fax: (12) 626 46 94
E-mail: info@pxm.pl
Internet: www.pxm.pl

1. GENERAL DESCRIPTION

PX277 settings controller is used to change the operational parameters of devices manufactured by PXM and to read important information from these devices.

List of supported products:

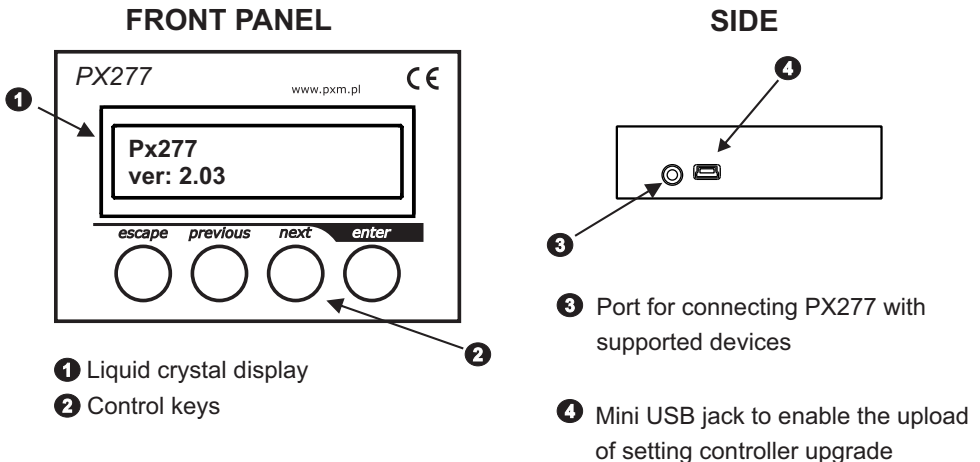
- lamps of PxArt series for archive rail system: PX260, PX261 and PX262;
- wall-mounted lamps of PxArt+ series PX330, PX331, PX332;
- lamps of PxArt+ series adapted to the new rail system GLOBAL Trac® Pulse control: PX372, PX378, PX389, PX390, PX391, PX392, PX393;
- speaker of PxArt+ series adapted to the new rail system GLOBAL Trac® Pulse control: PX348;
- inverter of DMX to 0-10 V: PX385.

2. SAFETY CONDITIONS

During the use of PX277, the following rules must be strictly observed:

1. The conductor should be protected against mechanical and thermal damage.
2. In the event of damaging the conductor, it should be replaced with a conductor of the same technical data.
3. The device is for indoor use only.
4. PX277 should be strictly protected against contact with water and other liquids.
5. Avoid sudden shocks, particularly dropping.
6. Do not operate the device in rooms with humidity above 90%.
7. The device must not be used in rooms with temperature below +2 °C or above 40 °C.
8. Clean with a damp duster only, do not use any detergents.

3. CONTROLLER DESCRIPTION



4. TURNING THE DEVICE ON

When the device is activated, its name and version appear on the display and are presented for 2 seconds, for instance: **[Px277 ver: 2.03]**. Then, PX277 will start to search for the device to which it is connected **[Device searching]**. The first menu screen will display the information about the model of the searched device. Other sub-menus will depend on the model of the connected device. The programmer allows you to view information parameters and edit the device settings.

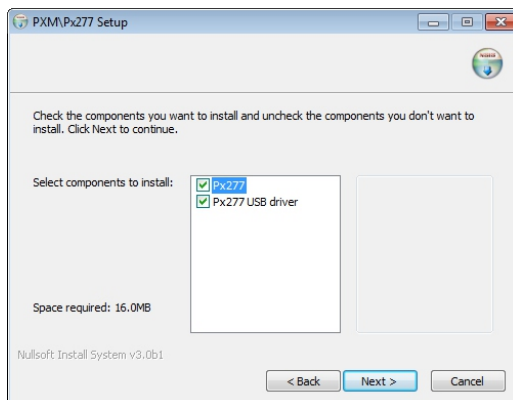
Navigating through the menu is possible with programmer buttons located below the display. The "escape" button allows an exit to the upper level in the device menu; "next" and "previous" buttons make it possible to go forward and backward (alternatively, decrease or increase value). The "enter" button allows you to enter the selected menu or to confirm the edited value.

5. CHANGING LANGUAGE VERSION

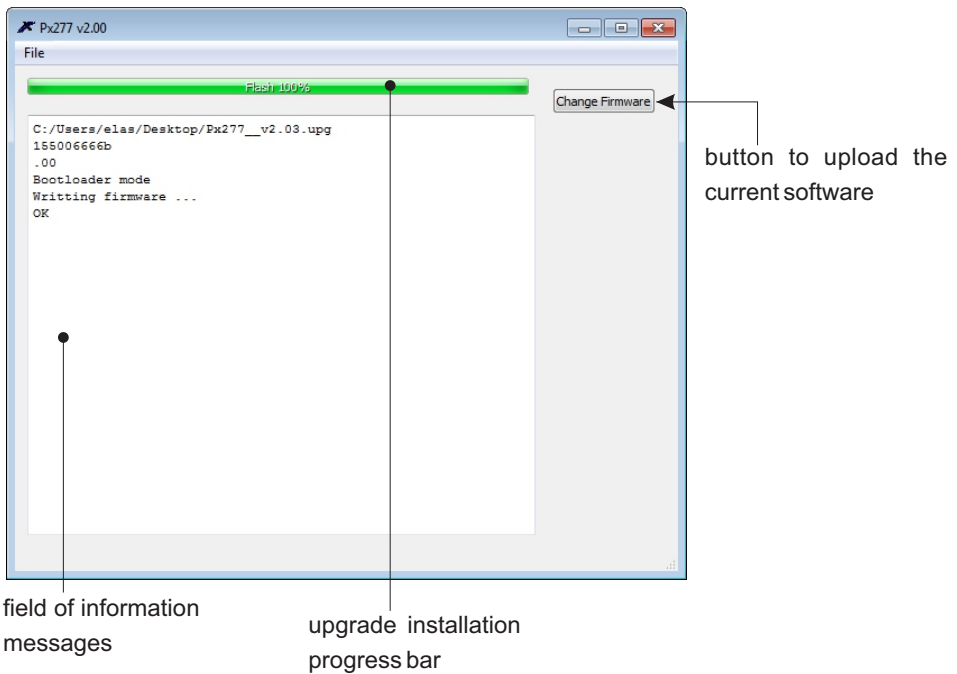
The default language version of the menu is Polish. Press and hold the "escape" button when connecting the device to change the language to English.

6. UPGRADE PROCEDURE

1. To update the software, you must have a file with the appropriate firmware version adequate to the model of a device, and software used to upload the upgrade. All the latest files are available for download from the website <http://pxm.pl>
2. Run the installation file Px277_P_xx_v2.00a
3. From the drop-down menu, select the language for the installation and confirm by clicking **[OK]**.
4. Carefully read the license agreement; if you agree to the terms of this agreement, click **[I Agree]** to continue the installation.
5. Select the components you want to install, then click **[Next]**.

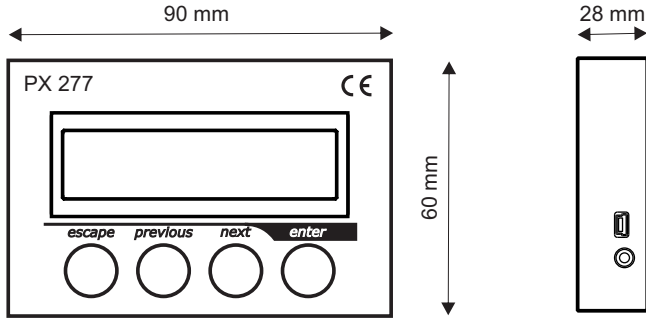


6. Select the folder in which you want to install the software. Confirm your selection by clicking **[Next]**.
7. Select the start menu in which you want to create a shortcut to the program. You can also rename the folder, then click **[Install]**.
8. To enable the correct installation of all selected software components, you need to install the USB driver. The **[Device driver installation wizard]** will be displayed in another window, click **[Next]** to continue.
9. The wizard displays the message "The drivers are successfully installed on this computer", click **[Finish]**.
10. The PX277 installer has successfully installed the software, click **[Close]**.
11. Open the installed PX277 program.



12. Click on the **[Change Firmware]**, button, and open the update file.
13. When an update is successfully uploaded, the progress bar displays the message **"Flash 100%"**, and the message field shows **„Writing firmware.... OK”**.

7. DIMENSIONS



8. TECHNICAL DATA

- | | |
|---|--|
| - power supply | from the programmed device
(mini-jack plug) or from USB |
| - connection to the
programmed device: | dedicated mini-jack cable |
| - weight: | |
| - dimensions: | |
| - width | 0,1 kg |
| - height | 90 mm |
| - depth | 60 mm |
| | 28 mm |





ul. Przemysłowa 12
30-701 Kraków

tel: 12 626 46 92
fax: 12 626 46 94

e-mail: info@pxm.pl
http://www.pxm.pl

DECLARATION OF CONFORMITY according to guide line 2004/108/WE

Name of producer: **PXM**

Adres producenta: ul. Przemysłowa 12
30-701 Kraków

declares that the product:

Name of product: **PxArt Settings Controller**

Type: **PX277**

answers the following product specifications:

EMC: **PN-EN 55103-1**
PN-EN 55103-2

Additional informations: DMX signal has to be connected by using a shielded cable, connected to the GND pin.



Marek Żupnik spółka komandytowa
30-701 Kraków, ul. Przemysłowa 12
NIP 677-002-54-63

Kraków, 08.02.2012

mgr inż. Marek Żupnik.