



MISTRAL TC

PHOTOMETRY



AYRTON
Digital Lighting



Total Flux	14811 lm (@zoom 128, integrating sphere measurement, Fan mode auto)
-------------------	---

CCT @LED engin	7000 (±500K)
CCT @open	6500 (±500K)
Ra @open	90 (±2)
TLCI	89
TM-30	Rf: 86.7 Rg: 93.5

Fan Mode	Noise Level (dBA)	by Goniometer (lm)	by Sphere (lm)
Auto	43,6	10331	14504
Stage	45,8	10629	14811
Silence	38,3	6698	11122
Super Silence	34,5	4991	8406

Note: noise measured @1m distance, static status, ambient 31 dBA.

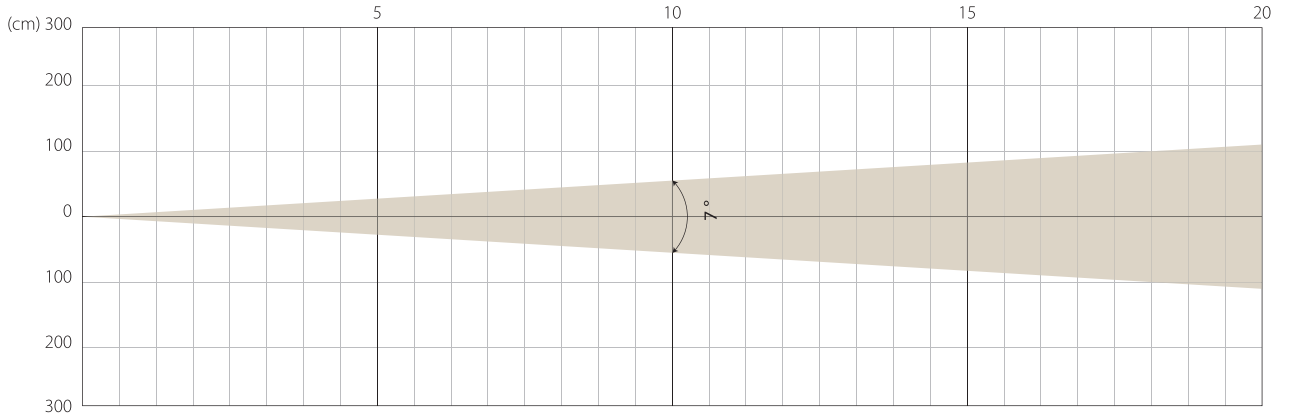
Voltage / Power	100-240V, 50-60Hz	550 W
Fixture Dimension / Weight	365 x 591 x 212 mm	19 kg
Packing Dimension / Weight	455 x 705 x 285 mm	28.5 kg

AUTO MODE

NATIVE CRI GREATER THAN 90

MIN ZOOM

Beam Opening

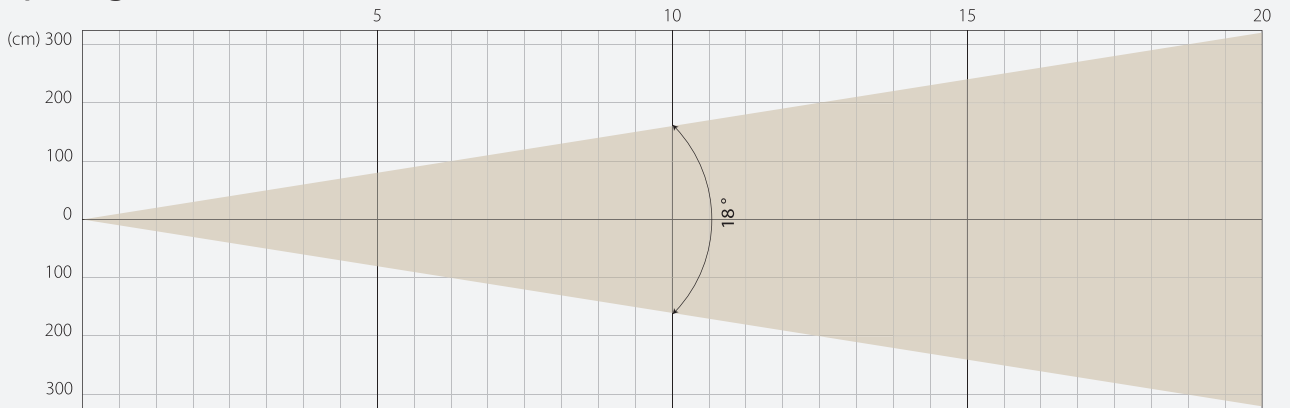


Intensity

Distance (m)	5		10		15		20	
unit	lux	diameter	lux	diameter	lux	diameter	lux	diameter
White	24365	0,61	6091	1,22	2707	1,83	1523	2,45

MIDDLE ZOOM

Beam Opening

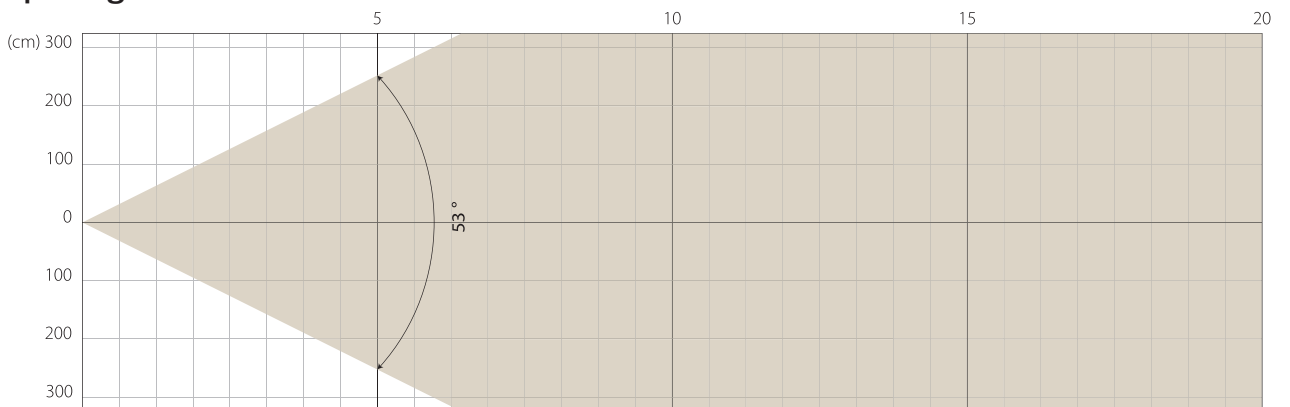


Intensity

Distance (m)	5		10		15		20	
unit	lux	diameter	lux	diameter	lux	diameter	lux	diameter
White	5417	1,58	1354	3,17	602	4,75	339	6,34

MAX ZOOM

Beam Opening



Intensity

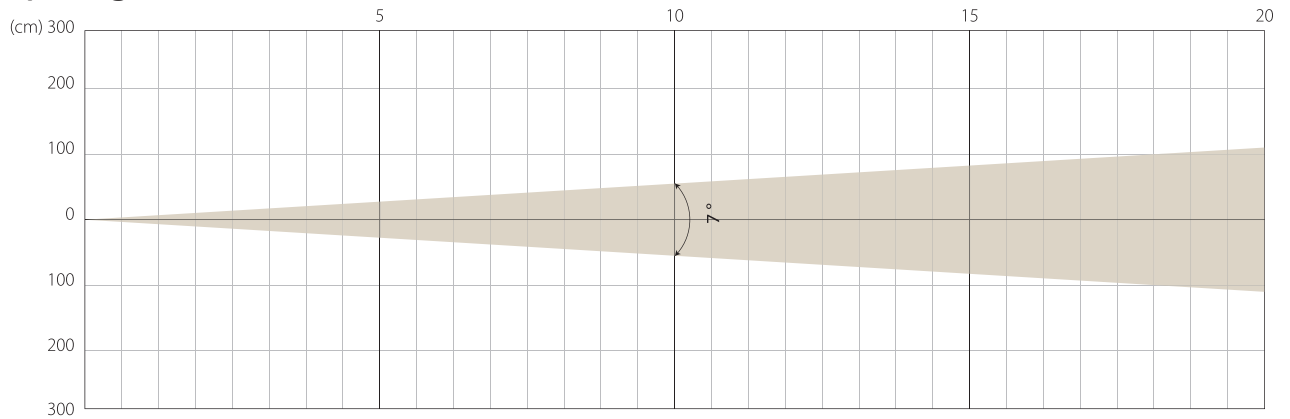
Distance (m)	5		10		15		20	
unit	lux	diameter	lux	diameter	lux	diameter	lux	diameter
White	1031	4,99	258	9,97	115	14,96	64	19,94

STAGE MODE

NATIVE CRI GREATER THAN 90

MIN ZOOM

Beam Opening

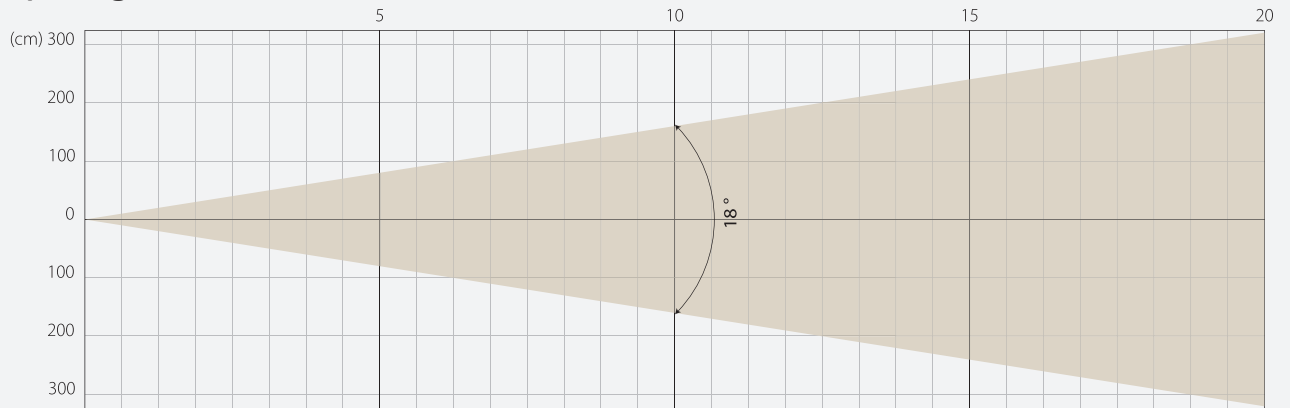


Intensity

Distance (m)	5		10		15		20	
unit	lux	diameter	lux	diameter	lux	diameter	lux	diameter
White	25205	0,61	6301	1,22	2801	1,83	1575	2,45

MIDDLE ZOOM

Beam Opening

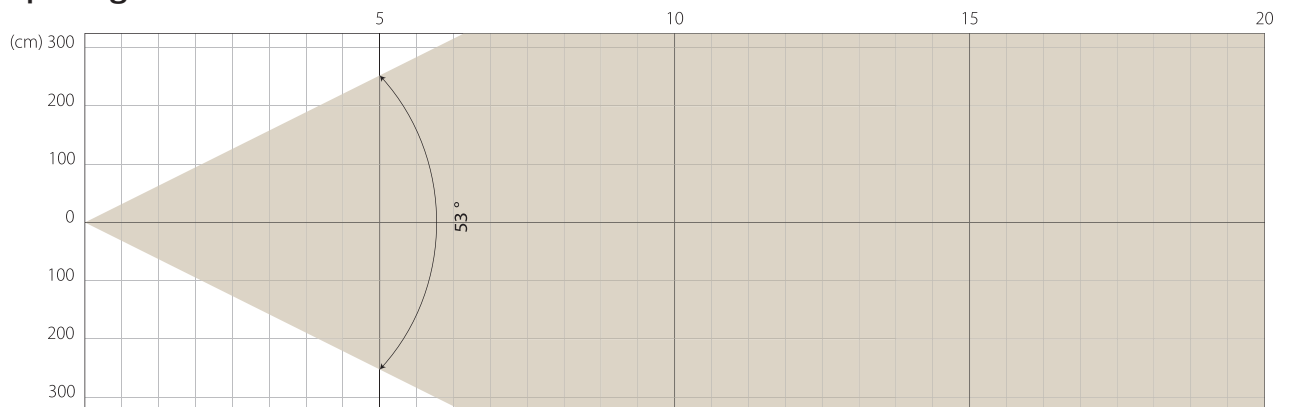


Intensity

Distance (m)	5		10		15		20	
unit	lux	diameter	lux	diameter	lux	diameter	lux	diameter
White	5587	1,58	1397	3,17	621	4,75	349	6,34

MAX ZOOM

Beam Opening

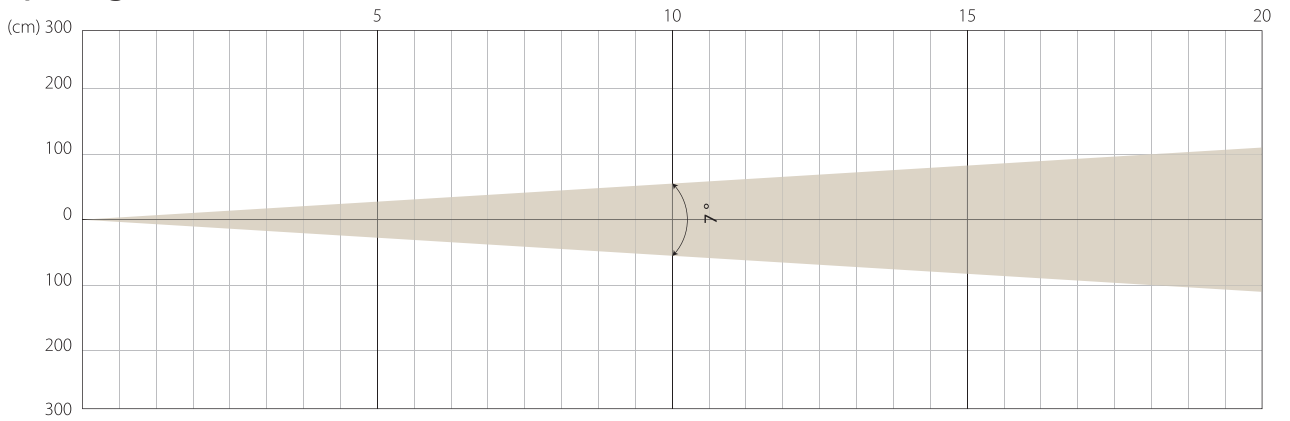


Intensity

Distance (m)	5		10		15		20	
unit	lux	diameter	lux	diameter	lux	diameter	lux	diameter
White	1060	4,99	265	9,97	118	14,96	66	19,94

MIN ZOOM

Beam Opening

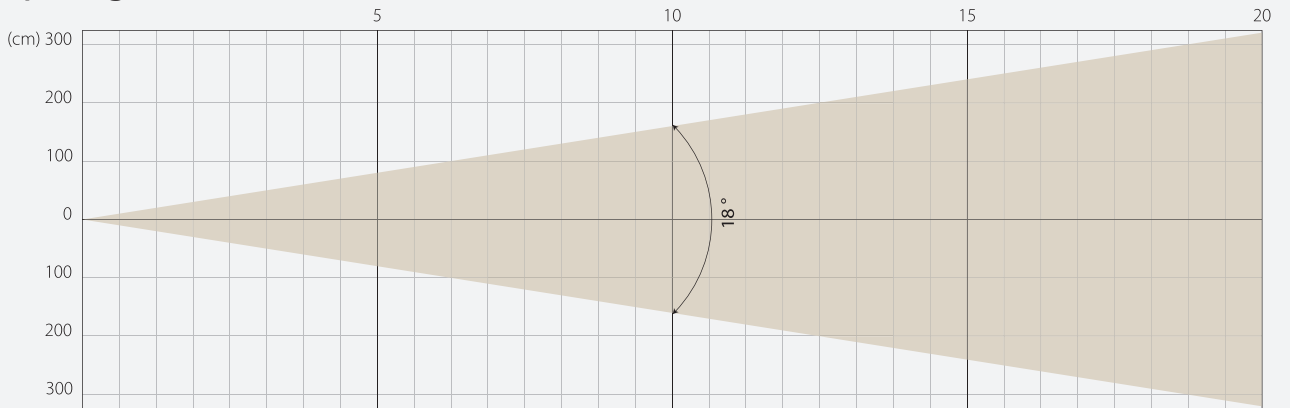


Intensity

Distance (m)	5		10		15		20	
unit	lux	diameter	lux	diameter	lux	diameter	lux	diameter
White	15380	0,61	3845	1,22	1709	1,83	961	2,45

MIDDLE ZOOM

Beam Opening

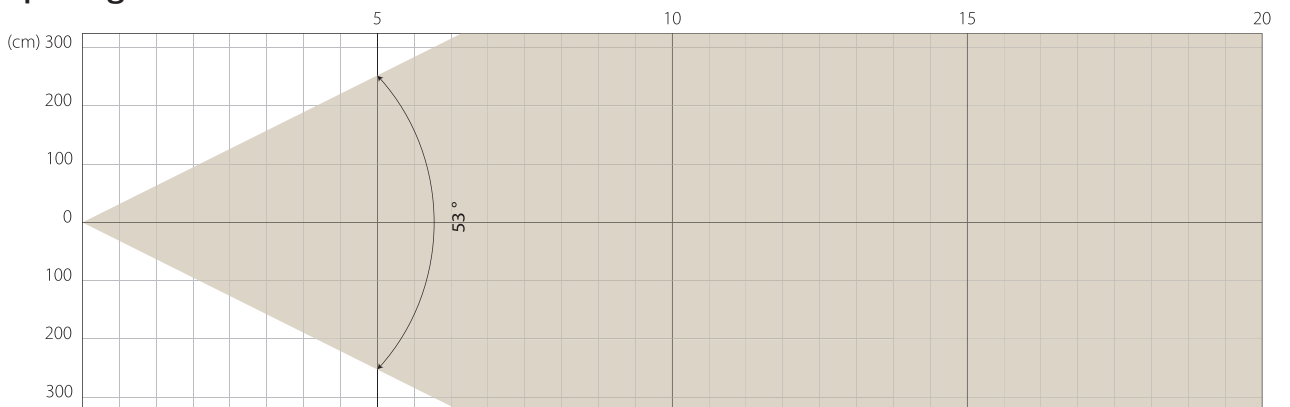


Intensity

Distance (m)	5		10		15		20	
unit	lux	diameter	lux	diameter	lux	diameter	lux	diameter
White	3451	1,58	863	3,17	383	4,75	216	6,34

MAX ZOOM

Beam Opening



Intensity

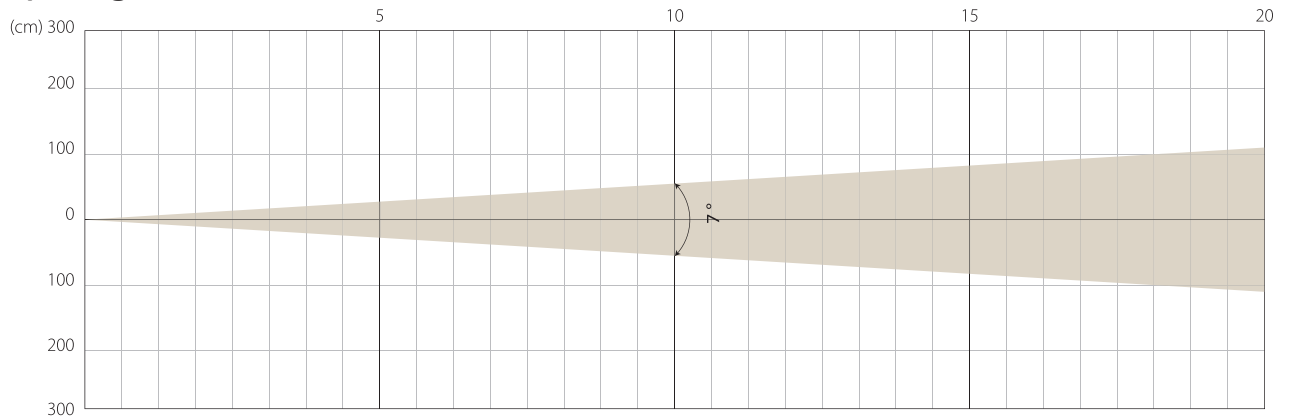
Distance (m)	5		10		15		20	
unit	lux	diameter	lux	diameter	lux	diameter	lux	diameter
White	660	4,99	165	9,97	73	14,96	41	19,94

SUPER SILENCE MODE

NATIVE CRI GREATER THAN 90

MIN ZOOM

Beam Opening

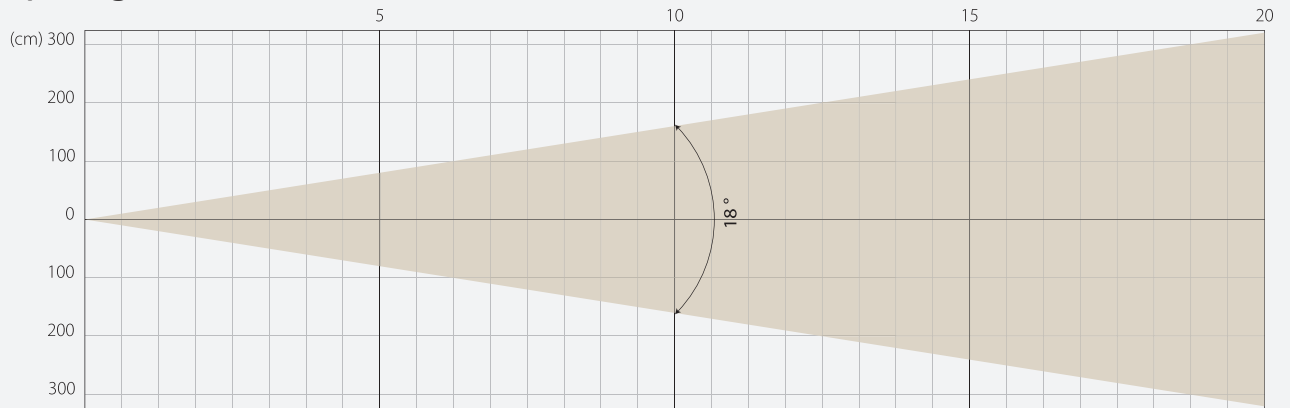


Intensity

Distance (m)	5		10		15		20	
unit	lux	diameter	lux	diameter	lux	diameter	lux	diameter
White	11684	0,61	2921	1,22	1298	1,83	730	2,45

MIDDLE ZOOM

Beam Opening

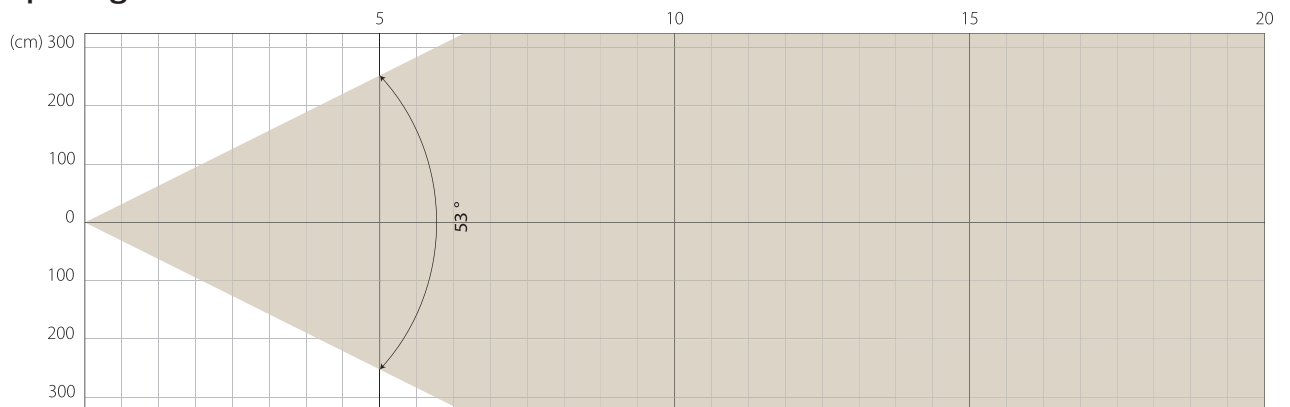


Intensity

Distance (m)	5		10		15		20	
unit	lux	diameter	lux	diameter	lux	diameter	lux	diameter
White	2598	1,58	650	3,17	289	4,75	162	6,34

MAX ZOOM

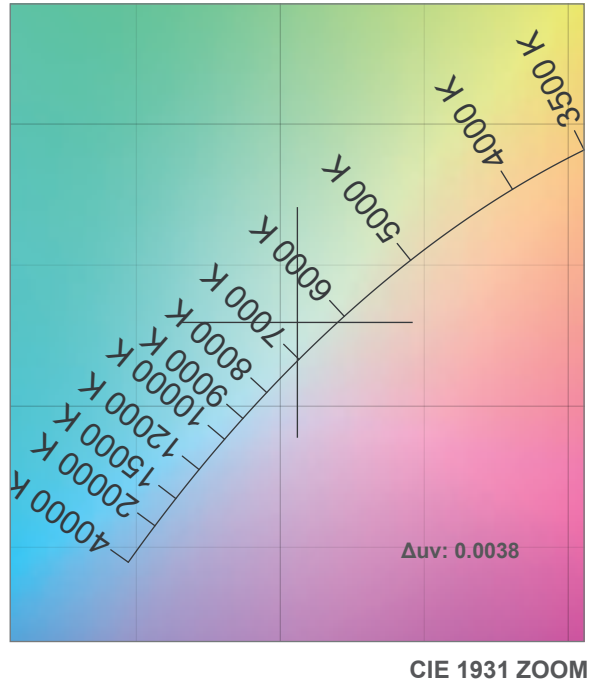
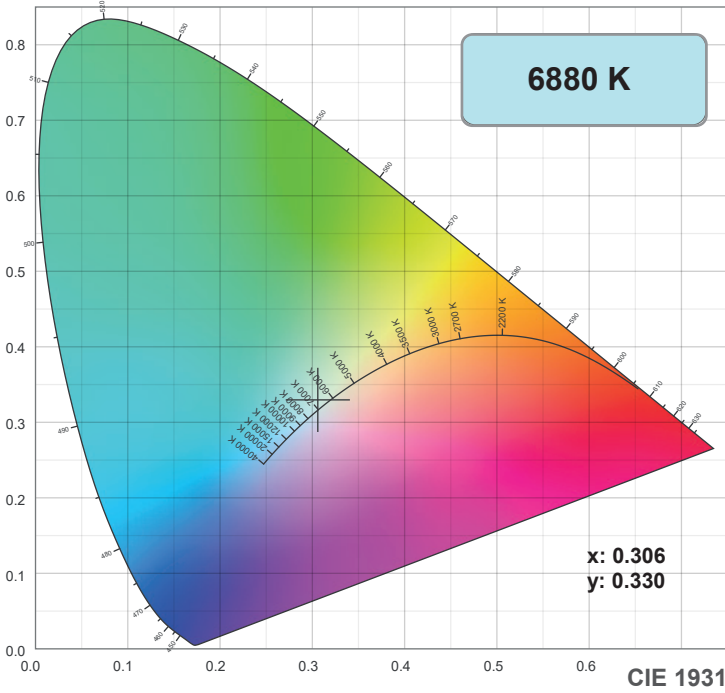
Beam Opening



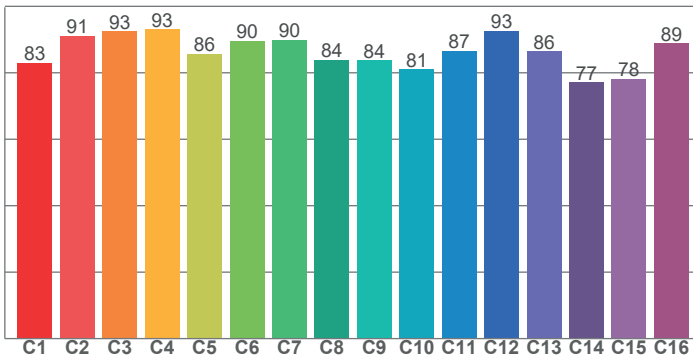
Intensity

Distance (m)	5		10		15		20	
unit	lux	diameter	lux	diameter	lux	diameter	lux	diameter
White	493	4,99	123	9,97	55	14,96	31	19,94

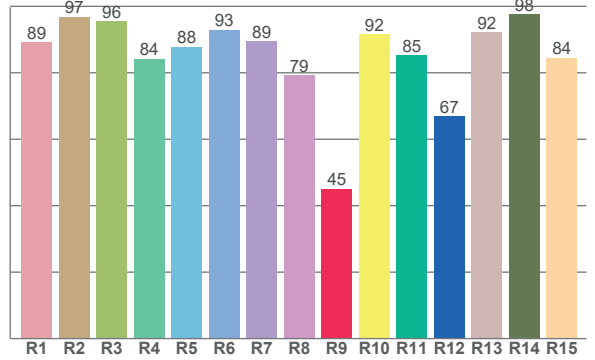
COLOR DETAILS



TM-30: 86.7



CRI: 89.4 (R1-R8)



CRI R values, only R1-R8 are used to calculate final CRI value

R1	R2	R3	R4	R5	R6	R7	R8	R9	R10	R11	R12	R13	R14	R15
89.2	96.9	95.6	84.2	87.9	92.9	89.4	79.3	45.1	91.6	85.3	66.8	92.3	97.7	84.5

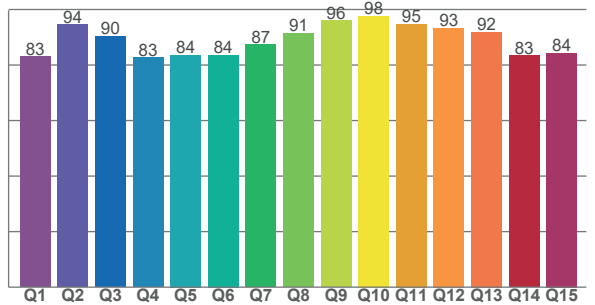
TM30 C values, 16 binned values out of total of 99 C values

C1	C2	C3	C4	C5	C6	C7	C8	C9	C10	C11	C12	C13	C14	C15	C16
82.9	91.1	92.5	93.0	85.6	89.7	89.9	84.0	83.8	81.1	86.6	92.6	86.5	77.1	78.2	88.8

CQS Q values

Q1	Q2	Q3	Q4	Q5	Q6	Q7	Q8	Q9	Q10	Q11	Q12	Q13	Q14	Q15
83.0	94.5	90.3	82.6	83.6	83.6	87.3	91.4	96.0	97.7	94.8	93.4	91.8	83.4	84.4

CQS: 88.0



Color parameters

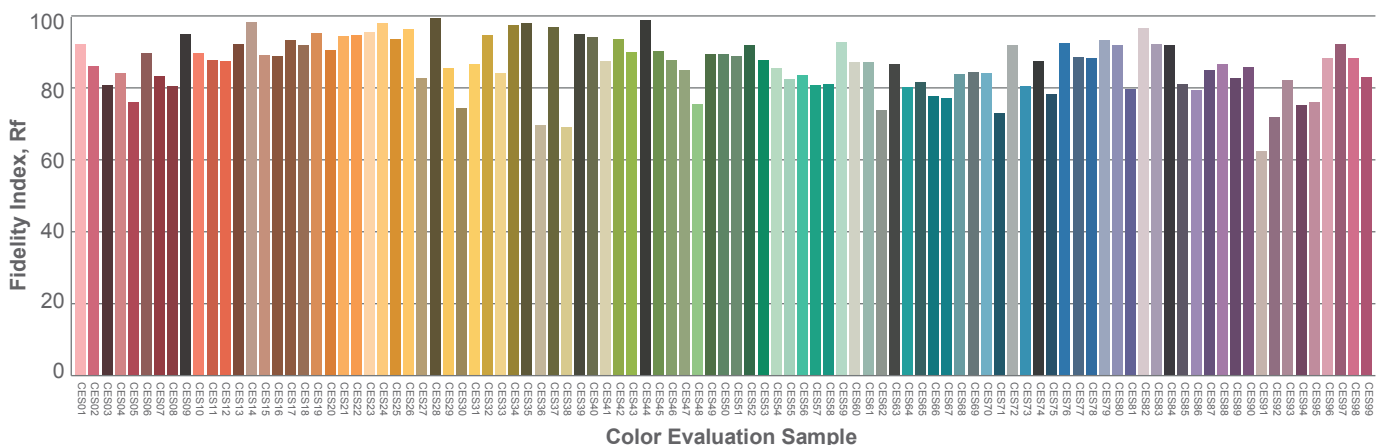
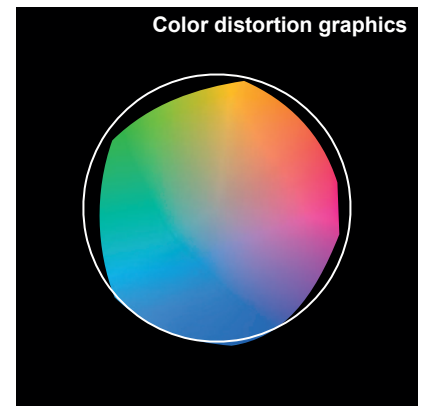
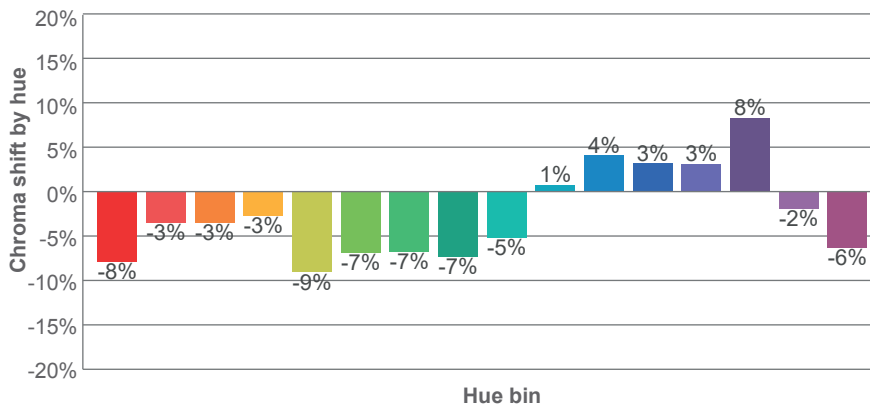
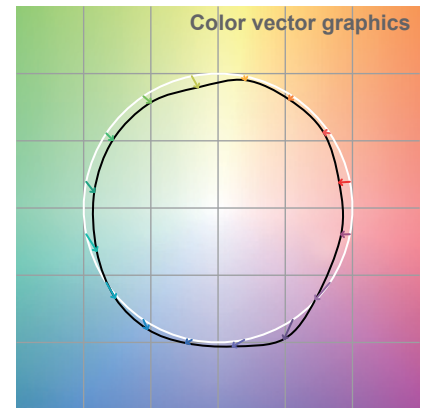
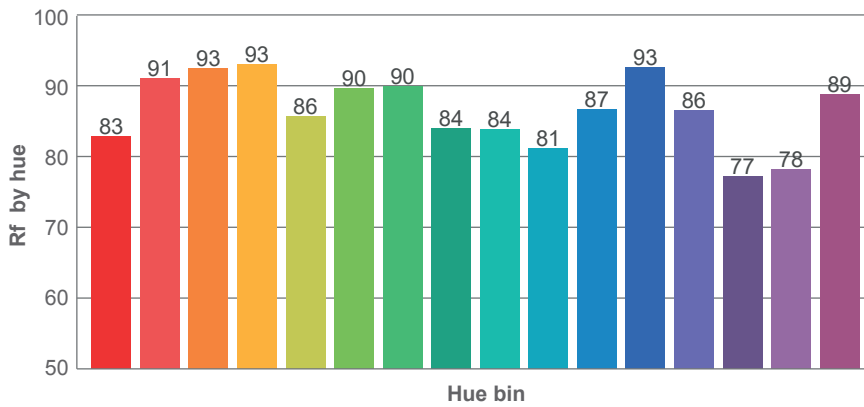
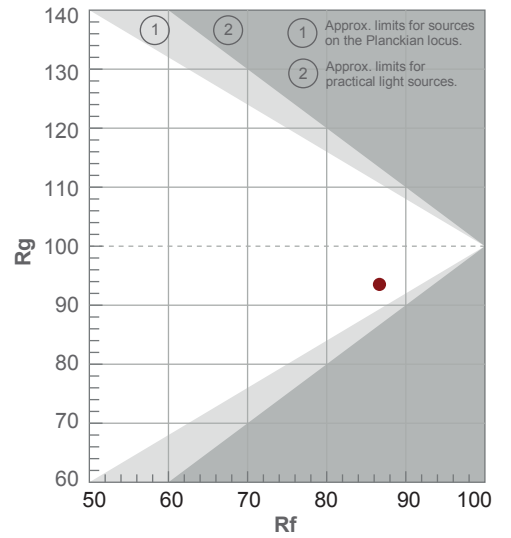
Color temperature	Color rendering index	Red component	Color fidelity	Color gamut	Color quality scale	Color coordinate cie 1931	Color coordinate cie 1931	Color coordinate	Color coordinate	Color deviation from black body
CCT	CRI	CRI R9	TM30 Rf	TM30 Rg	CQS	x	y	u	v	Δuv
6880 K	89.4	45.1	86.7	93.5	88.0	0.306	0.330	0.193	0.312	0.0038

TM-30 DETAILS

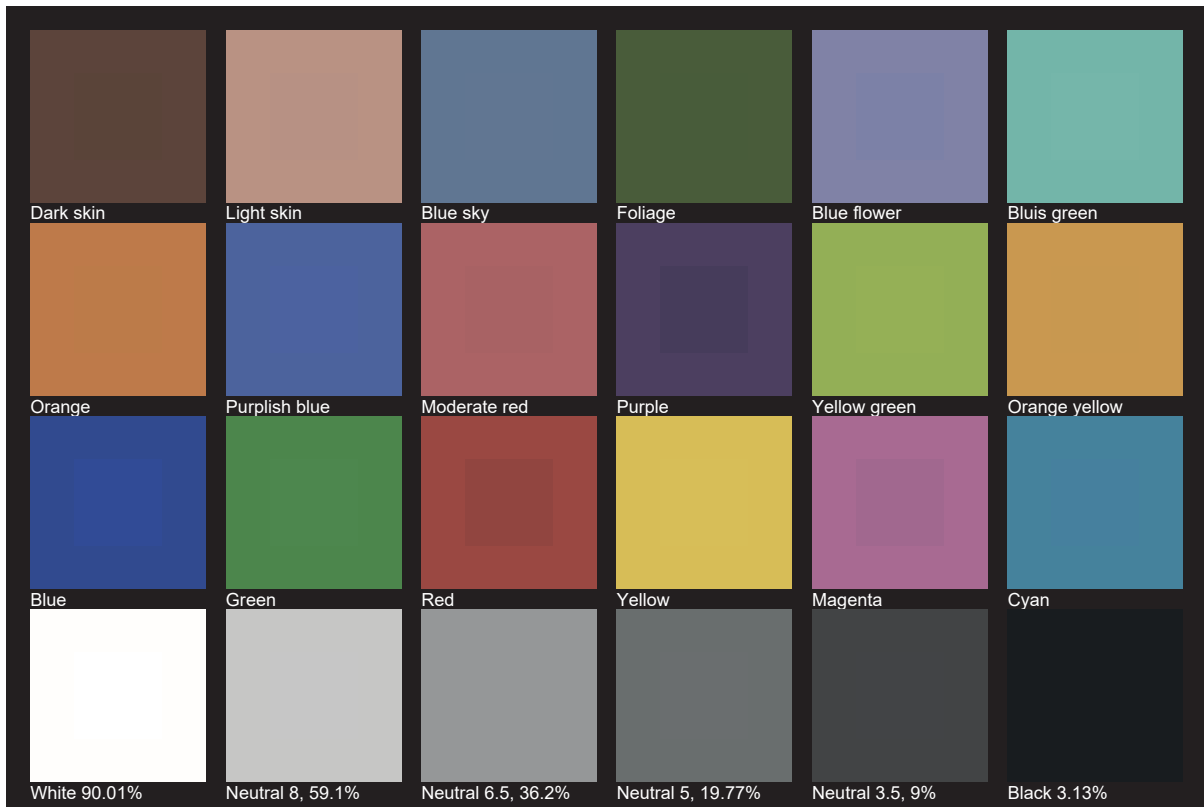
Rf 86.7
Fidelity index Rf

Rg 93.5
Gamut index Rg

Hue Bin	R _f	Shifts (%)	
		Chroma	Hue
1	83	-8%	1%
2	91	-3%	3%
3	93	-3%	1%
4	93	-3%	-1%
5	86	-9%	-3%
6	90	-7%	-2%
7	90	-7%	1%
8	84	-7%	6%
9	84	-5%	14%
10	81	1%	13%
11	87	4%	6%
12	93	3%	-4%
13	86	3%	-9%
14	77	8%	-13%
15	78	-2%	-16%
16	89	-6%	-1%



TLCI 89





AYRTON

Digital Lighting