

# PHOTOMETRIC TEST REPORT



## **FIXTURE DATA**

---

**Manufacturer:** Clay Paky s.r.l.  
**Fixture model:** MINI-B SPARKY AQUA  
**Date:** 2024-11-21

## TABLE OF CONTENTS:

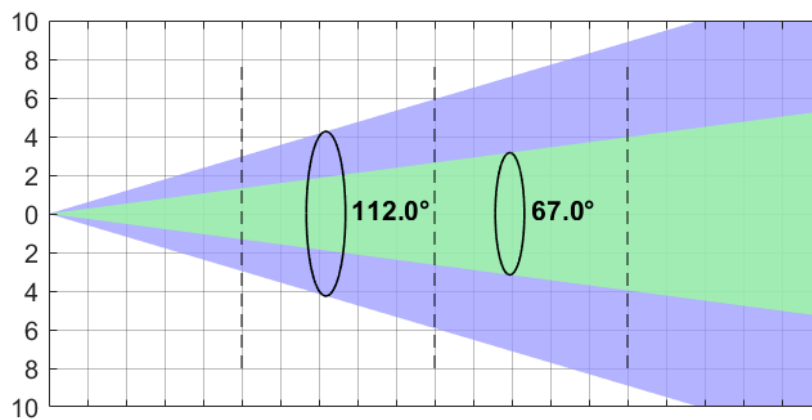
⇒ FAN MODE: AUTO	3
⇒ FAN MODE: CONSTANT	4
⇒ FAN MODE: SILENT	5
⇒ FAN MODE: THEATRE	6
⇒ TM-30: FULL COLOR	7
⇒ TLCI-201: FULL COLOR	8
⇒ TM-30: WHITE	9
⇒ TLCI-2012: WHITE	10
⇒ TM-30: CTO 4%	11
⇒ TLCI-2012: CTO 4%	12
⇒ TM-30: CTO 100%	13
⇒ TLCI-2012: CTO 100%	14

## FAN MODE: AUTO

### Auto Fan mode (112° 10% - 67° 50%)

**Total Output: 17042 lumens**

	Lux (fc)	Lux (fc)	Lux (fc)	Lux (fc)
Full Colour	1341 (125)	335 (31)	149 (14)	84 (8)
Red	327 (30)	82 (8)	36 (3)	20 (2)
Green	723 (67)	181 (17)	80 (7)	45 (4)
Blue	116 (11)	29 (3)	13 (1)	7 (1)
White	1458 (135)	365 (34)	162 (15)	91 (8)
CTO 4%	1490 (138)	373 (35)	166 (15)	93 (9)
CTO 100%	681 (63)	170 (16)	76 (7)	43 (4)



Distance	m (ft in)	0	2 (6' 7")	4 (13' 1")	6 (19' 8")	8 (26' 3")
Diameter 10%	m (ft in)	0	5.94 (19' 6")	11.88 (38' 12")	17.82 (58' 6")	23.76 (77' 11")
Diameter 50%	m (ft in)	0	2.64 (8' 8")	5.28 (17' 4")	7.92 (25' 12")	10.56 (34' 8")

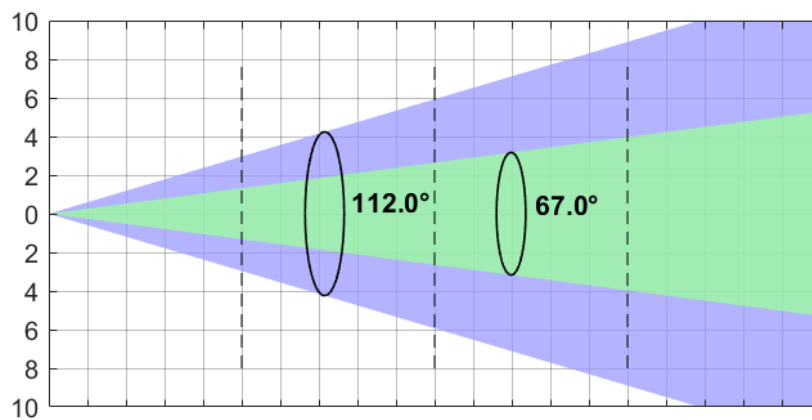
\*Lumen values detected with integrating sphere. Measurements taken 15 minutes after the fixture was turned on.

## FAN MODE: CONSTANT

### Constant Fan mode (112° 10% - 67° 50%)

**Total Output: 17569 lumens**

	Lux (fc)	Lux (fc)	Lux (fc)	Lux (fc)
Full Colour	1390 (129)	347 (32)	154 (14)	87 (8)
Red	336 (31)	84 (8)	37 (3)	21 (2)
Green	728 (68)	182 (17)	81 (8)	46 (4)
Blue	116 (11)	29 (3)	13 (1)	7 (1)
White	1496 (139)	374 (35)	166 (15)	93 (9)
CTO 4%	1521 (141)	380 (35)	169 (16)	95 (9)
CTO 100%	700 (65)	175 (16)	78 (7)	44 (4)



Distance	m (ft in)	0	2 (6' 7")	4 (13' 1")	6 (19' 8")	8 (26' 3")
Diameter 10%	m (ft in)	0	5.94 (19' 6")	11.88 (38' 12")	17.82 (58' 6")	23.76 (77' 11")
Diameter 50%	m (ft in)	0	2.64 (8' 8")	5.28 (17' 4")	7.92 (25' 12")	10.56 (34' 8")

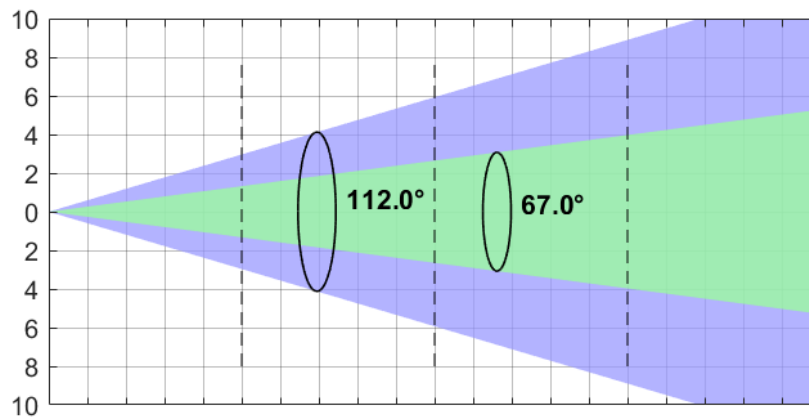
\*Lumen values detected with integrating sphere. Measurements taken 15 minutes after the fixture was turned on.

**FAN MODE: SILENT**

**Silent Fan mode (112° 10% - 67° 50%)**

**Total Output: 17018 lumens**

	Lux (fc)	Lux (fc)	Lux (fc)	Lux (fc)
Full Colour	1344 (125)	336 (31)	149 (14)	84 (8)
Red	318 (30)	80 (7)	35 (3)	20 (2)
Green	718 (67)	180 (17)	80 (7)	45 (4)
Blue	116 (11)	29 (3)	13 (1)	7 (1)
White	1452 (135)	363 (34)	161 (15)	91 (8)
CTO 4%	1483 (138)	371 (34)	165 (15)	93 (9)
CTO 100%	634 (59)	159 (15)	70 (7)	40 (4)



Distance	m (ft in)	0	2 (6' 7")	4 (13' 1")	6 (19' 8")	8 (26' 3")
Diameter 10%	m (ft in)	0	5.94 (19' 6")	11.88 (38' 12")	17.82 (58' 6")	23.76 (77' 11")
Diameter 50%	m (ft in)	0	2.64 (8' 8")	5.28 (17' 4")	7.92 (25' 12")	10.56 (34' 8")

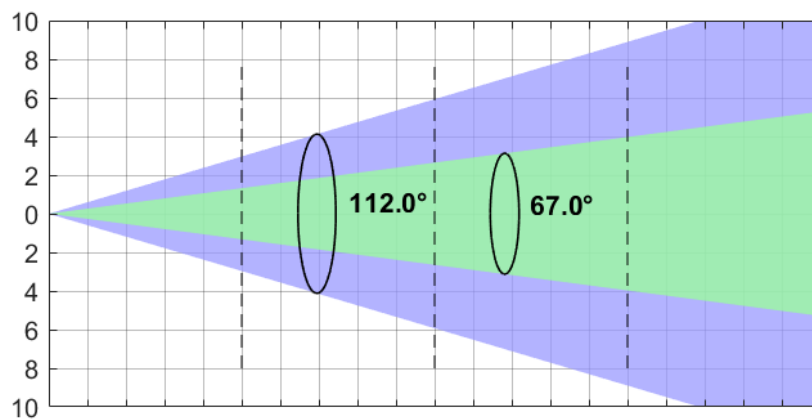
\*Lumen values detected with integrating sphere. Measurements taken 15 minutes after the fixture was turned on.

## FAN MODE: THEATRE

### Theatre Fan mode (112° 10% - 67° 50%)

**Total Output: 13172 lumens**

	Lux (fc)	Lux (fc)	Lux (fc)	Lux (fc)
Full Colour	1036 (96)	259 (24)	115 (11)	65 (6)
Red	276 (26)	69 (6)	31 (3)	17 (2)
Green	566 (53)	141 (13)	63 (6)	35 (3)
Blue	87 (8)	22 (2)	10 (1)	5 (1)
White	1121 (104)	280 (26)	125 (12)	70 (7)
CTO 4%	1146 (106)	286 (27)	127 (12)	72 (7)
CTO 100%	554 (51)	138 (13)	62 (6)	35 (3)



Distance	m (ft in)	0	2 (6' 7")	4 (13' 1")	6 (19' 8")	8 (26' 3")
Diameter 10%	m (ft in)	0	5.94 (19' 6")	11.88 (38' 12")	17.82 (58' 6")	23.76 (77' 11")
Diameter 50%	m (ft in)	0	2.64 (8' 8")	5.28 (17' 4")	7.92 (25' 12")	10.56 (34' 8")

\*Lumen values detected with integrating sphere. Measurements taken 15 minutes after the fixture was turned on.

# TM-30: FULL COLOR

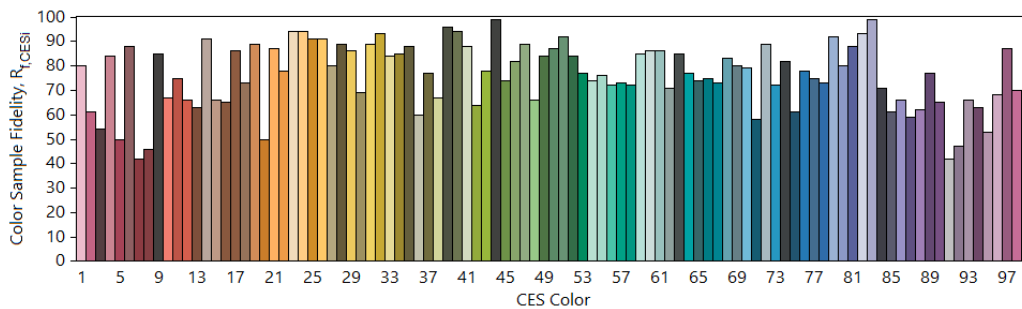
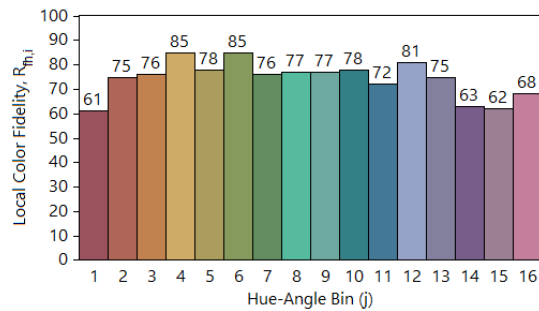
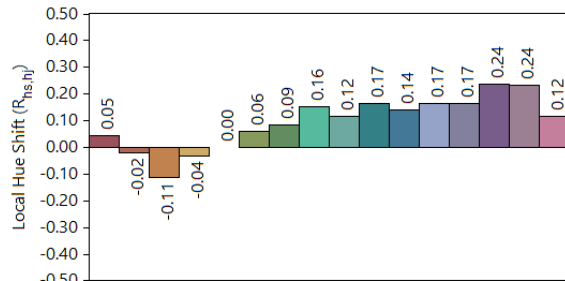
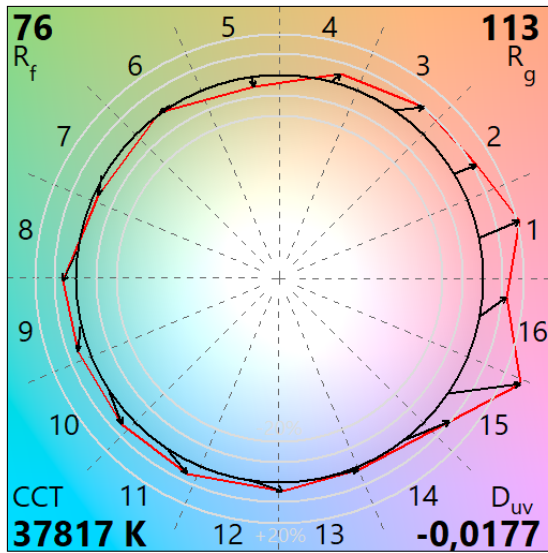
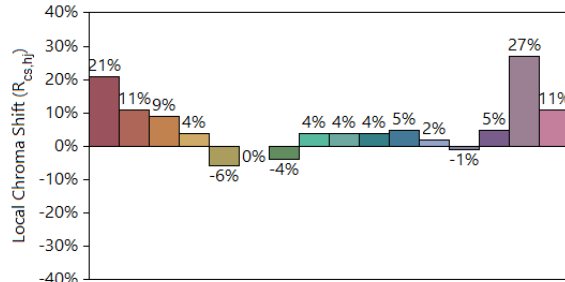
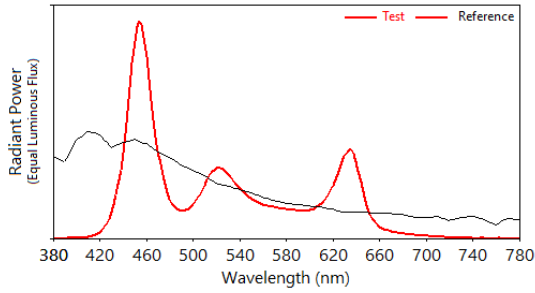
## IES TM-30-18 Color Rendition Report

Source: Mini B Sparky Aqua

Manufacturer: CLAY PAKY

Date: 1410.2024

Model: Mini B Sparky Aqua



Notes: FULL COLOR

x 0,2623  
y 0,2334  
u' 0,1989  
v' 0,3982

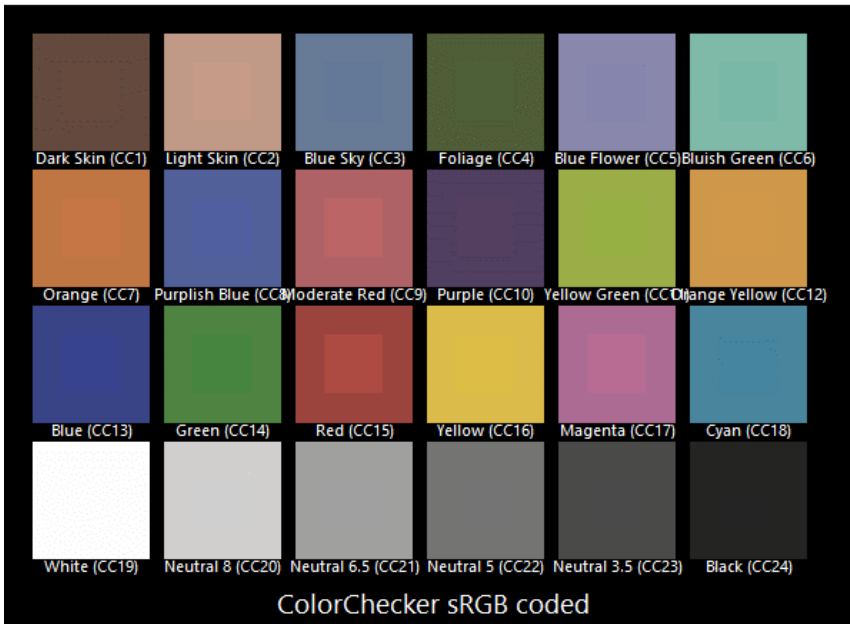
CIE 13.3-1995  
(CRI)  
Ra N/A  
Rg -96

Colors are for visual orientation purposes only.

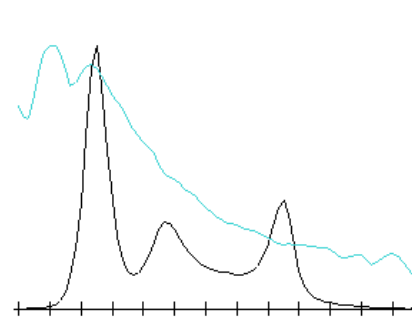
# TLCI-201: FULL COLOR

Direct spectrum input : CCT = D37817 (-3.3)

TLCI-2012 : 64 (D37817)



Sector	Lightness	Chroma	Hue
R	-----	---	0
R/Y	-	-	0
Y	-	-	0
Y/G	0	-	-
G	0	--	-
G/C	0	-	0
C	0	-	-
C/B	0	-	-
B	0	--	0
B/M	0	0	-
M	0	0	--
M/R	----	--	----





# TM-30: WHITE

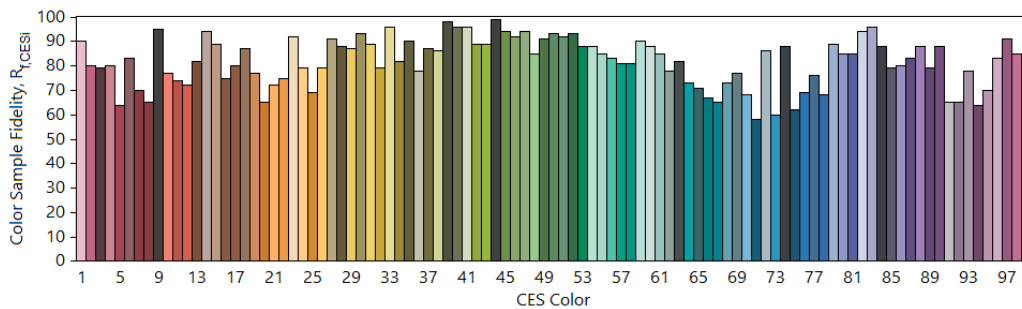
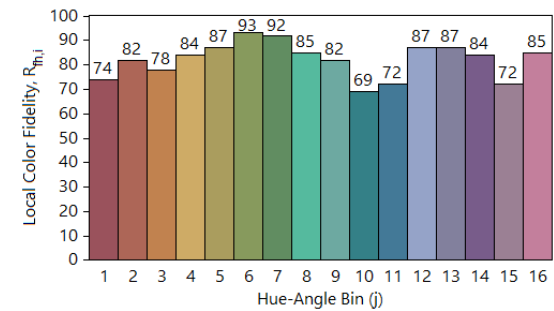
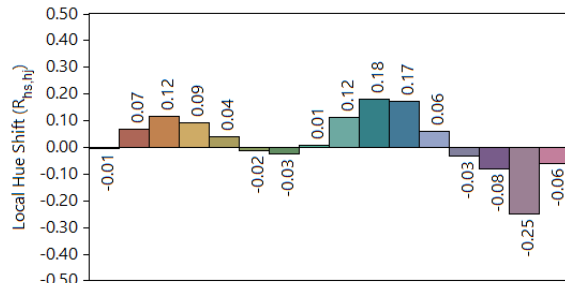
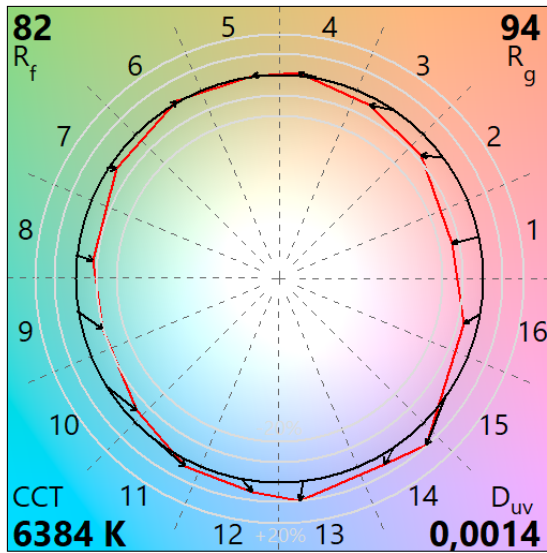
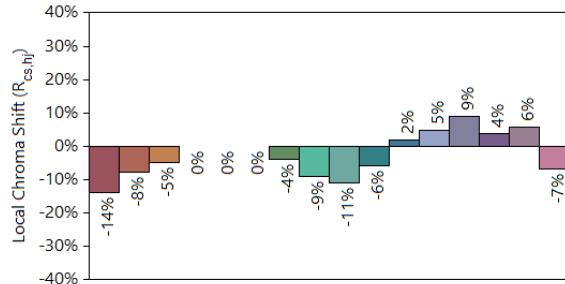
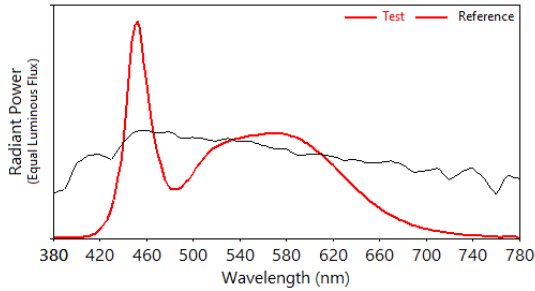
## IES TM-30-18 Color Rendition Report

Source: Mini B Sparky Aqua

Manufacturer: CLAY PAKY

Date: 1410.2024

Model: Mini B Sparky Aqua



Notes: WHITE

x 0,3151  
y 0,3278  
u' 0,1999  
v' 0,4680

CIE 13.3-1995  
(CRI)  
R<sub>a</sub> 82  
R<sub>g</sub> 4

Colors are for visual orientation purposes only.

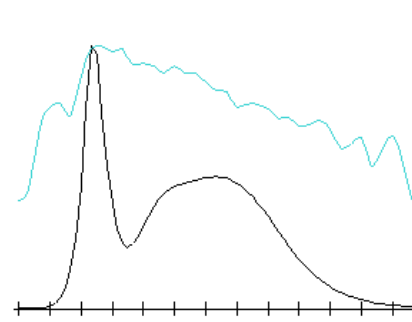
# TLCI-2012: WHITE

Direct spectrum input : CCT = D6384 (-0.3)

TLCI-2012 : 66 (D6384)



Sector	Lightness	Chroma	Hue
R	++++	++	0
R/Y	0	0	---
Y	0	-	-
Y/G	0	-	0
G	-	0	++
G/C	0	+	+
C	+	0	-
C/B	++	0	---
B	0	--	-
B/M	++	0	++++
M	+++	0	++++
M/R	++++	0	++++



# TM-30: CTO 4%

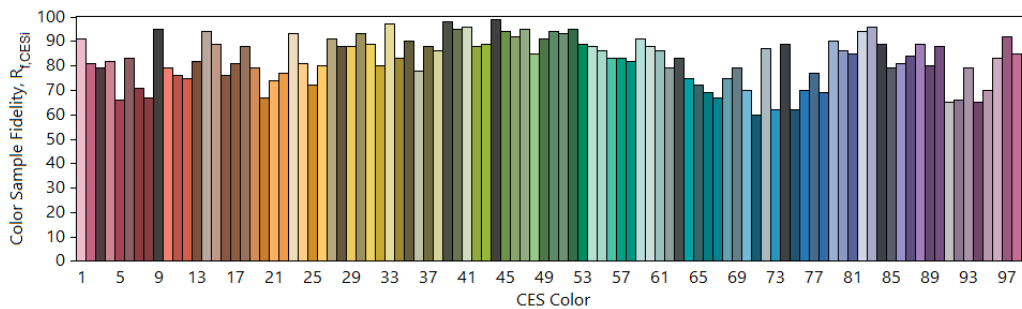
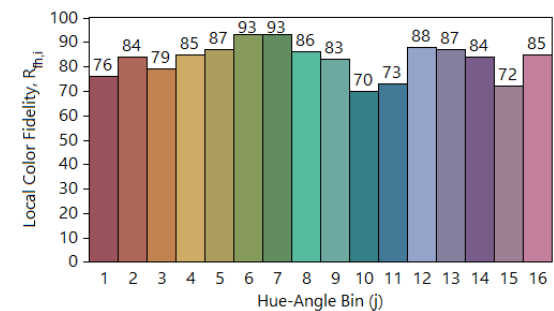
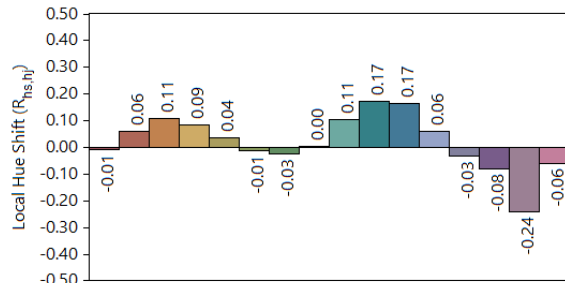
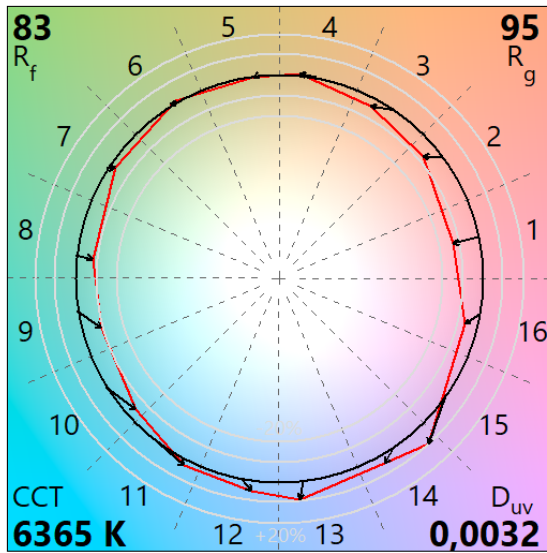
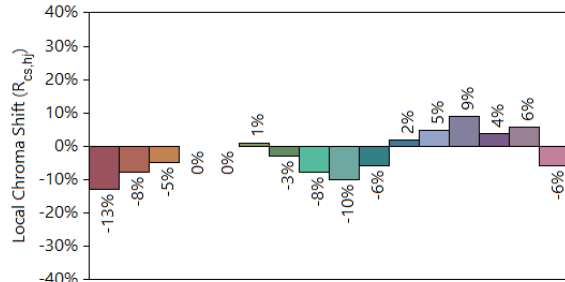
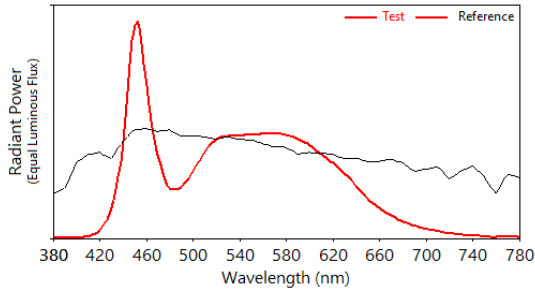
## IES TM-30-18 Color Rendition Report

Source: Mini B Sparky Aqua

Manufacturer: CLAY PAKY

Date: 1410.2024

Model: Mini B Sparky Aqua



Notes: CTO 4%

x 0,3150  
y 0,3312  
u' 0,1986  
v' 0,4699

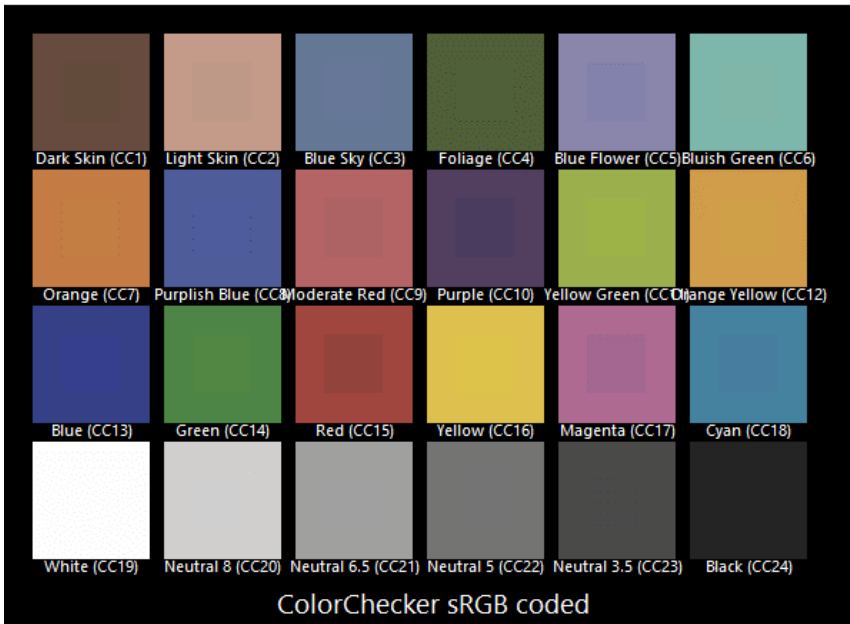
CIE 13.3-1995  
(CRI)  
 $R_a$  83  
 $R_g$  8

Colors are for visual orientation purposes only.

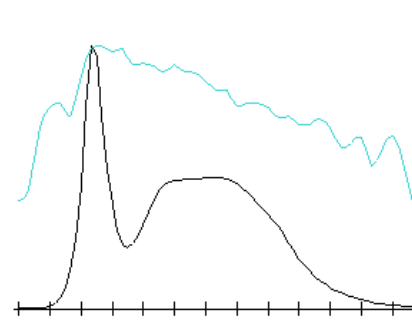
# TLCI-2012: CTO 4%

Direct spectrum input : CCT = D6365 (0.0)

TLCI-2012 : 70 (D6365)



Sector	Lightness	Chroma	Hue
R	++++	++	0
R/Y	0	0	---
Y	0	-	-
Y/G	0	-	0
G	-	0	+
G/C	0	0	+
C	+	0	-
C/B	+	0	---
B	0	--	-
B/M	++	0	++++
M	+++	0	++++
M/R	++++	0	++++



# TM-30: CTO 100%

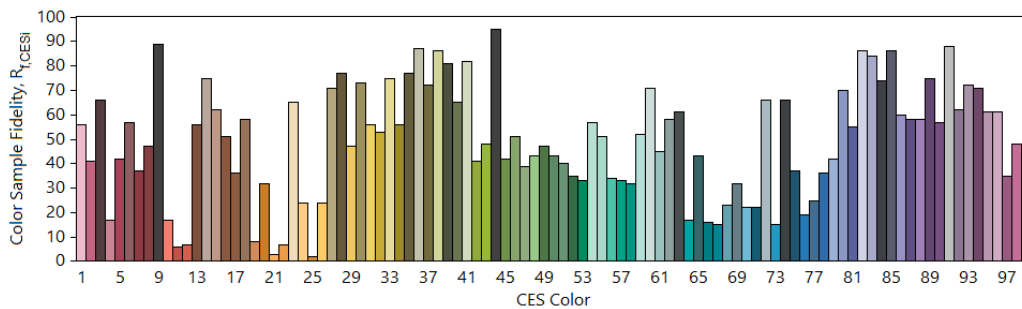
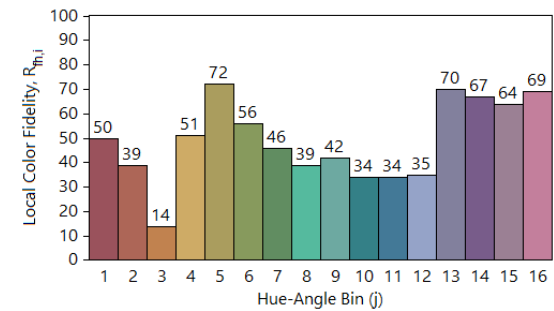
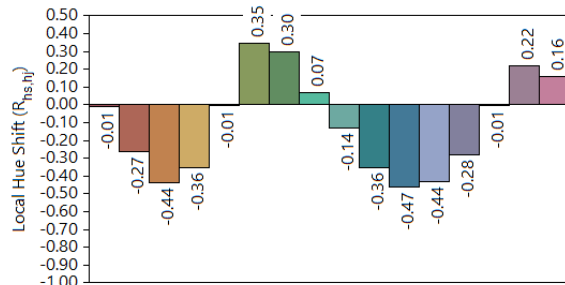
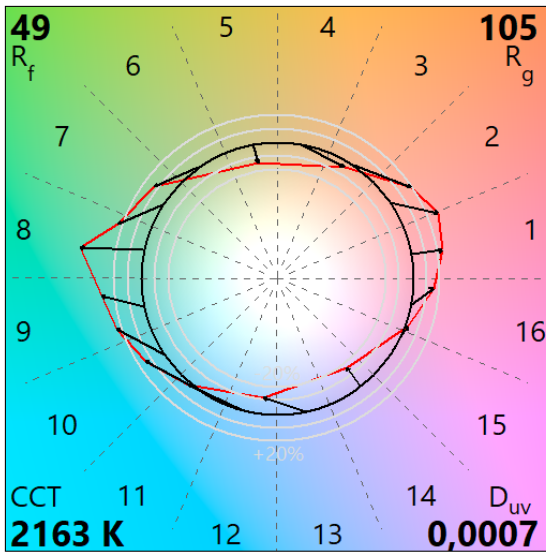
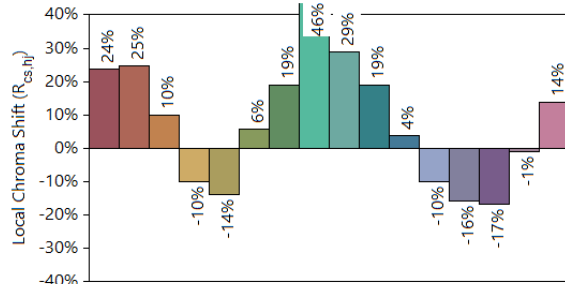
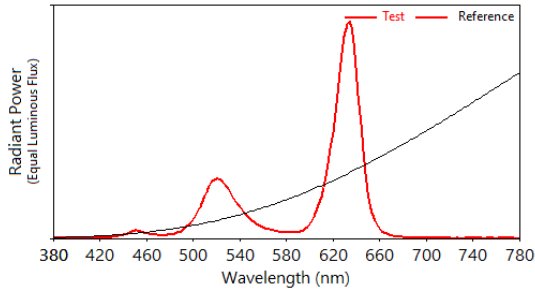
## IES TM-30-18 Color Rendition Report

Source: Mini B Sparky Aqua

Manufacturer: CLAY PAKY

Date: 1410.2024

Model: Mini B Sparky Aqua



Notes: CTO 100%

x 0,5110  
y 0,4173  
u' 0,2926  
v' 0,5376

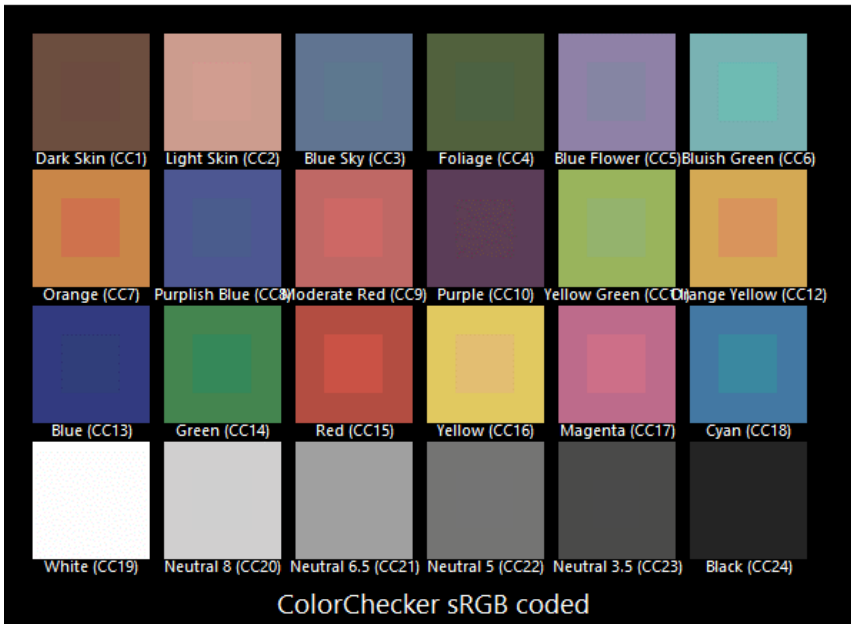
CIE 13.3-1995  
(CRI)  
Ra 22  
Rg -83

Colors are for visual orientation purposes only.

# TLCI-2012: CTO 100%

Direct spectrum input : CCT = P2163 (+0.1)

TLCI-2012 : 11 (P2163)



Sector	Lightness	Chroma	Hue
R	--	--	+++
R/Y	+++++	++++	N/A
Y	++	+++++	+++++
Y/G	0	+++++	----
G	0	0	----
G/C	-	0	----
C	----	----	+++++
C/B	----	++	+++++
B	0	+++++	+++++
B/M	N/A	N/A	N/A
M	N/A	N/A	N/A
M/R	0	+	----

