



AUSTRIAN AUDIO

MiCreator

User Manual

Introduction

MiCreator is a microphone system consisting of several microphones and accessories. Depending on the application, you only need the main microphone, MiCreator Studio, or you can combine a plurality of system devices to expand your application scenarios. MiCreator is also available as a system set, in which you get MiCreator Studio and MiCreator Satellite including all necessary cables combined in a practical case.

Since this is a manual for the entire system, you will find the appropriate section for your device(s) in the table of contents.

Please read, comprehend and follow all instructions in this guide before using these devices.

- Please use these devices only for their intended purposes. Austrian Audio shall not assume any liability for damage resulting from improper handling or misuse.
- Wearing headphones at full volume for long periods of time can damage your hearing.
- If a fault occurs, please stop using the devices.
- Always store the equipment in a dry and safe place.
- Do not operate the equipment outside the intended operating temperature range of 0 °C to 45 °C (32 °F – 113 °F).
- Do not use the devices in a damp or wet environment.
- Please do not drop.
- These devices are professional microphones; keep them away from small children.
- If you need to clean the devices, please use a soft, dry cloth.
- Do not use third-party accessories unless otherwise noted.
- Do not disassemble the devices, as there are no user-serviceable parts inside.
- The devices (MiCreator Studio + MiCreator Satellite) contain magnets for the interchangeable cover plates.

Thank you very much for reading the notes so far and, of course, for placing your trust in Austrian Audio.

Table of Contents

| | |
|---|----|
| MiCreator Studio | 3 |
| Controls and connections | 3 |
| Switching on and off | 3 |
| Positioning and alignment | 4 |
| Establishing the USB-C® connection | 4 |
| Plugging in headphones and starting up..... | 5 |
| Setting the monitoring (volume of the microphone signal in the headphones)..... | 5 |
| Adjusting the microphone gain..... | 6 |
| Connecting other devices and adjusting the input gain | 6 |
| Additional input gain for signal transmission via the USB-C® connection | 8 |
| Interchangeable cover plate | 10 |
| Transport of the MiCreator Studio | 10 |
| Technical specifications | 11 |
| MiCreator Satellite..... | 12 |
| Connections | 12 |
| Positioning and alignment | 12 |
| Plugging in headphones and starting up..... | 13 |
| Adjusting microphone and headphone gain..... | 13 |
| Interchangeable cover plate | 14 |
| Transport of the MiCreator Satellite..... | 14 |
| Technical specifications | 15 |
| MiCreator Y-Lav | 16 |
| Positioning and alignment | 16 |
| Plugging in headphones and starting up..... | 16 |
| Adjusting the microphone gain..... | 16 |
| Transport of the MiCreator Y-Lav | 17 |
| Technical specifications | 18 |
| Troubleshooting..... | 19 |
| MiCreator Studio | 19 |
| MiCreator Satellite..... | 19 |
| MiCreator Y-Lav | 19 |
| Legal information..... | 20 |

MiCreator Studio

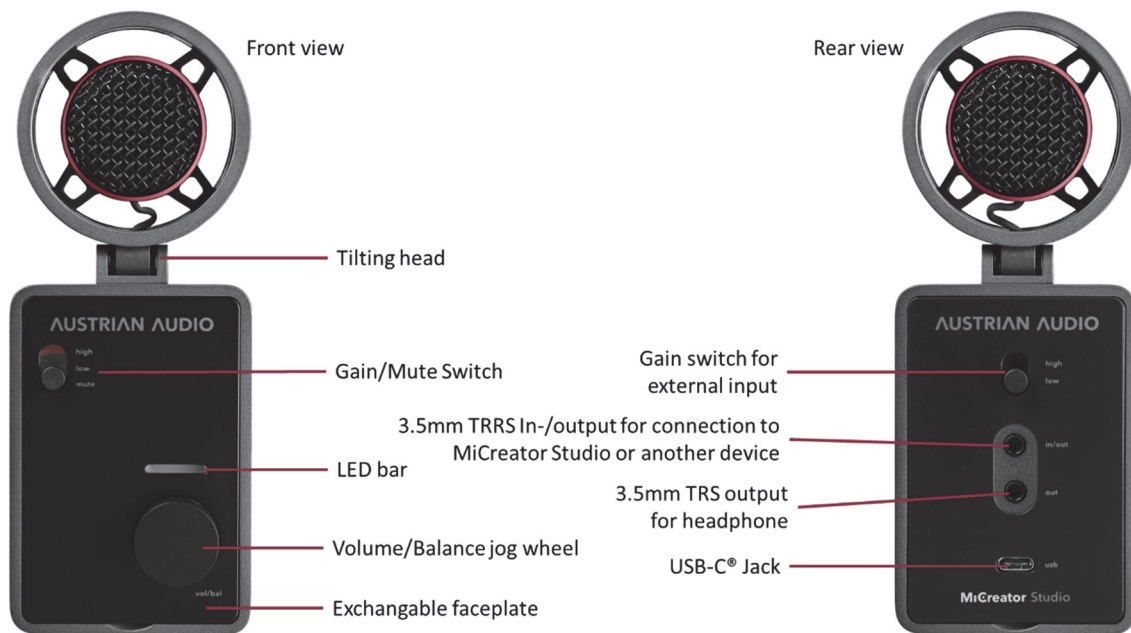
MiCreator Studio is a studio microphone with USB-C® connection to the partner device (such as computer, tablet, mobile phone, etc.).

In addition to a primary headphone output, MiCreator Studio has another jack that can be used both as a second headphone output or to connect the included instrument cable to record two signals simultaneously.

Alternatively, **MiCreator Satellite** or **MiCreator Y-Lav** can be connected to this socket – see the corresponding sections for more information.

Note: The microphone can also be powered by a USB power adapter (not included) and used as an analogue microphone.

Controls and connections



Switching on and off

The device does not have an on/off switch but starts automatically as soon as it is powered by the USB-C® socket (5V, 250mA). When starting, a red light animation is briefly visible on the LED bar. The LED bar then switches to volume mode (green).

Positioning and alignment

MiCreator Studio is designed to be used on a table or microphone stand.

The 3/8" thread for mounting on a standard microphone stand is located on the underside - for mounting on stands with a 5/8" thread, the MCTA thread adapter is included.



There are also rubber feet on the underside, which guarantee that it stands securely on flat surfaces. The suspended capsule offers good isolation from structure-borne noise and even allows it to be used as a hand-held microphone.

For all these applications, it is recommended to always align the tilting capsule head with the sound source to be recorded, wherein the speaking direction of the capsule is straight at the grille. Since the microphone has a cardioid polar pattern, sound coming from the back of the microphone (i.e., the side with the connectors) is maximally suppressed.

The capsule head has an internal pop shield – if this is not sufficient, an optional pop filter, such as the Austrian Audio OCP8, can be purchased.

Note: If the swivel joint loosens after a long period of use, it can be tightened with a screwdriver (Torx® T8).

Establishing the USB-C® connection

The device is USB Audio Class 1.0/2.0 compliant – i.e., it is immediately ready for use and no driver installation is necessary.

The device can be operated on any device with USB-C® or USB-A (via adapter - not included) socket. The maximum audio sampling rate is 48kHz with a bit depth of 24 bits.

The connection for the included USB-C® cable is located on the back of the device.

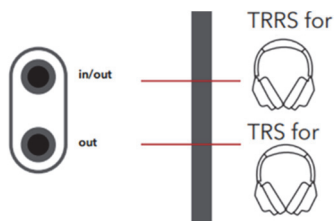
Supported USB devices include:

- Computers running Windows® 7 and later
- Mac® computer with macOS® 10.7 and later
- Computers running Linux® Kernel 3.10 and later
- Android™ tablets and mobile phones with USB-C®
- iPhone® with USB-C®
- iPad® with USB-C®
- iPhone®/iPad® via Camera Connection Kit (not included within the scope of supply)
- Sony PS4™/PS5™



Note: Since the complete signal processing and monitoring is implemented analogue in the device, the USB-C® socket can also be supplied by a USB power supply (not included) and MiCreator Studio can be used as an analogue microphone.

Plugging in headphones and starting up



The headphones are plugged into the "out" jack on the back – this is the primary headphone output.

If a second pair of headphones is required, it can be connected to the "in/out" jack. The identical signal can be heard on both sockets, and both share the volume and monitor control on the front.

It is therefore recommended to use two headphones of the same

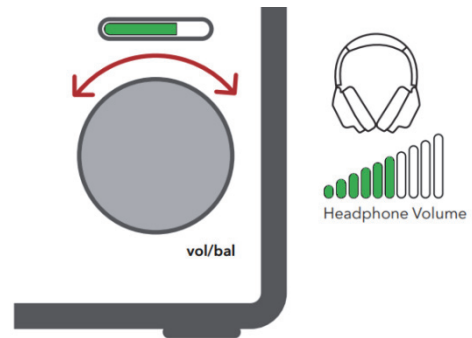
type or at least similar impedance (e.g., 25 ohms like the Austrian Audio Hi-X15).

The volume of the signal on the headphone output is adjusted via the front jog wheel. For this purpose, if not already done, the LED bar must be brought into green mode by pressing the jog wheel.

Turning the jog wheel clockwise now increases the volume at the headphone output, while turning counterclockwise reduces it. When the volume is completely reduced, the flashing of the LED bar symbolizes the muting of the headphone output.

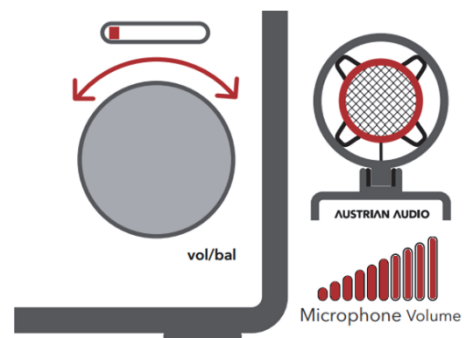
In order to reproduce the maximum possible level from an end device connected via the USB-C® connection to the headphone output of the MiCreator Studio, it is recommended to set the output level on this end device to the maximum.

Note: Controlling the headphone volume has no effect on the volume of the signal that is transmitted or recorded via the USB-C® connection to any end device.



Setting the monitoring (volume of the microphone signal in the headphones)

By pressing the jog wheel, the LED bar will be brought into red mode. Here, an LED dot that can be moved by turning the jog wheel symbolizes the monitoring balance. If the LED dot is moved all the way to the left, the microphone signal is played back at maximum volume at the headphone output (e.g., to hear yourself well during a vocal recording). If the LED dot is moved to the far right, the microphone signal is not reproduced at all at the headphone output (e.g., if you don't want to hear yourself in a video conference).



If an **additional device** is connected to the "in/out" jack of MiCreator Studio, moving the LED dot to the right (by turning the jog wheel clockwise) causes that signal to be played louder at the headphone output. These can be, for example, a synthesizer (connected via the included instrument cable), MiCreator Satellite or the MiCreator Y-Lav lavalier microphone. Turning counterclockwise, in turn, causes a reduction of this signal in the headphone output (while simultaneously amplifying the main microphone signal as described above). This allows the balance of the volume of these two signals in the headphones to be adjusted.

By pressing the jog wheel for a period of 2 seconds in red mode, the LED dot is moved to the centre, which means that the microphone signal and that connected to the "in/out" are reproduced equally loudly in the headphones (as long as their source is the same volume).

Note: Regulating the monitoring balance has no effect on the volume of the signal, which is transmitted to any end device via the USB-C® connection.

Adjusting the microphone gain



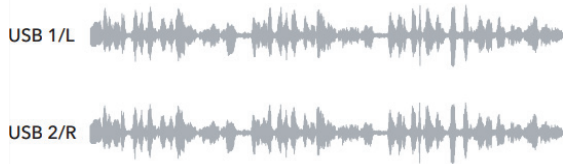
On the front of the MiCreator Studio, there is a three-way switch for microphone gain. If this is at the lowest "mute" position, the visible red marking on the switch signals that the microphone is muted on the input side. This is a so-called hardware mute – i.e., regardless of any other mute functions in conference software for example, no microphone signal is transmitted to the headphones or to an end device via the USB-C® connection. However, this only applies to the signal from the internal microphone capsule – anything connected to the "in/out" jack will not be muted.



If the switch is set to the "low" or "high" position, the microphone signal is amplified with 0dB ("low") or 20dB ("high"). This amplification affects both the signal at the headphone output (monitoring) and the signal that is transmitted to any end device via the USB-C® connection.



For quiet signals such as spoken word or delicate singing, the "high" position is recommended. For loud signals such as drums, guitars, wind instruments and loud vocals, the "low" position is recommended. Some examples can be found in the Quick Start Guide included within the scope of supply.

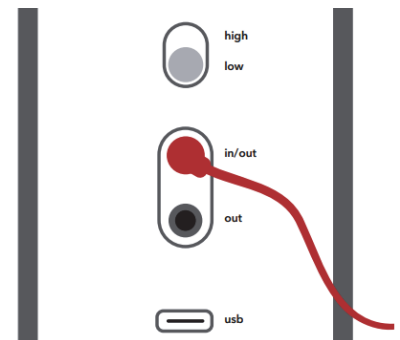


MiCreator Studio is recognized by the device as a stereo audio device. If no other devices are connected to the MiCreator Studio, the microphone signal is always transmitted on the left and right USB channels via the USB-C® connection.

Connecting other devices and adjusting the input gain

There is a two-way switch on the back of the device – this adjusts the input gain for other devices connected to the "in/out" socket.

If the instrument cable included within the scope of supply is connected, it is recommended to set the switch to "low", as electroacoustic instruments such as keyboards or guitars with active pickups sometimes generate high levels. (Furthermore, in the "low" position, the input impedance is set to the highest possible value in order to distort the signal of the connected instrument as little as possible – details can be found in the **Technical specifications** section).



Note: The supplied MCC1 instrument cable includes electronic components in the plug for automatic cable detection (e.g., to automatically switch the plug-in power and the input impedance). Therefore, only use the supplied MCC1 Instrument cable to connect instruments.

It is also recommended to set the switch to "low" if the "in/out" socket is only used to connect a second headphone or is generally not occupied, as this minimizes noise in monitoring.

If other microphones from the MiCreator family are purchased (such as MiCreator Satellite or the Y-Lav lavalier microphone), the **same recommendations** apply as for the microphone input gain in the upper section.

Note: While plugging the above devices into the "in/out", the headphone output of the MiCreator Studio is muted for a short time to avoid loud noise at the headphone output - this is symbolized by a

flashing of the LED bar. Nevertheless, it is recommended to mute any playback devices connected to the headphone output or to remove the headphones from the ear when plugged in.

As soon as the accessory has been connected, its signal is transmitted to the end device on the right channel via the USB-C® connection, which enables two-channel or stereo recording.

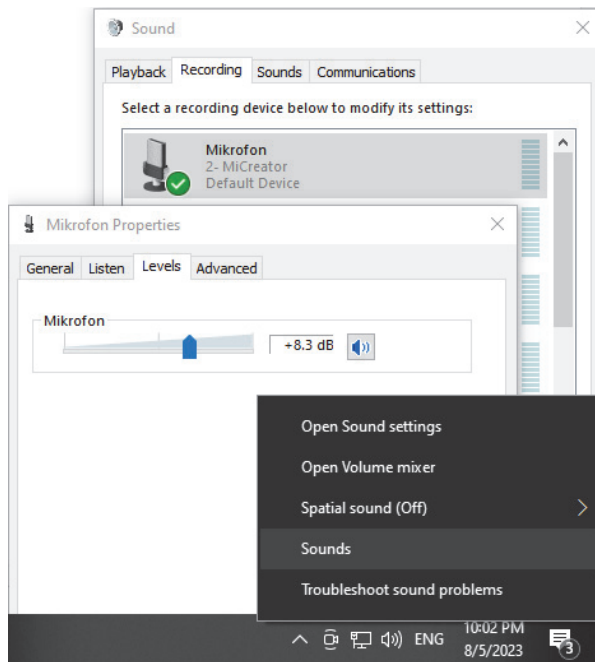


Note: The monitoring of the microphone signal or a second device connected to the "in/out" jack is always mono – i.e., both signals are reproduced in the middle of the stereo image of the headphone output.

Additional input gain for signal transmission via the USB-C® connection

The two-way input gain of MiCreator was chosen so that the signal can be recorded at a good level but still has enough headroom to avoid distortion. If more gain is needed (e.g., to guarantee a good quality in conferencing software), MiCreator Studio can provide up to 15dB additional analogue gain. This gain only affects signal transmission via the USB-C® connection, for both input channels.

Note: This additional gain is also used by conferencing software if “Adjust gain automatically” or similar is selected.



Setting up this additional gain is different according to the device to which MiCreator Studio is connected – here are some examples:

Windows 7/8.1/10

Right-click the loudspeaker symbol in the task bar

→ “Sounds”

Click on the tab “Recording”, then

Right-click on microphone MiCreator

→ “Settings”

In the “Level” tab, the additional gain can be configured.

Note: Right-clicking the number-field lets you choose between viewing the level in percentage (0-100) and dB.

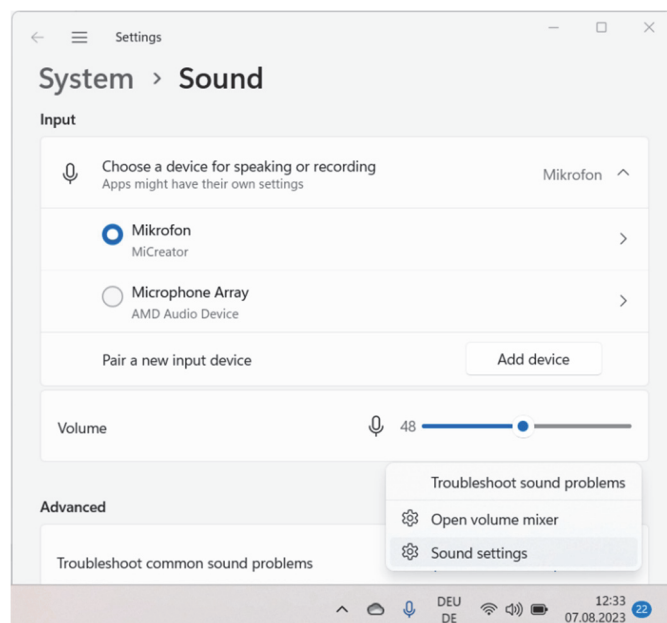
Windows 11

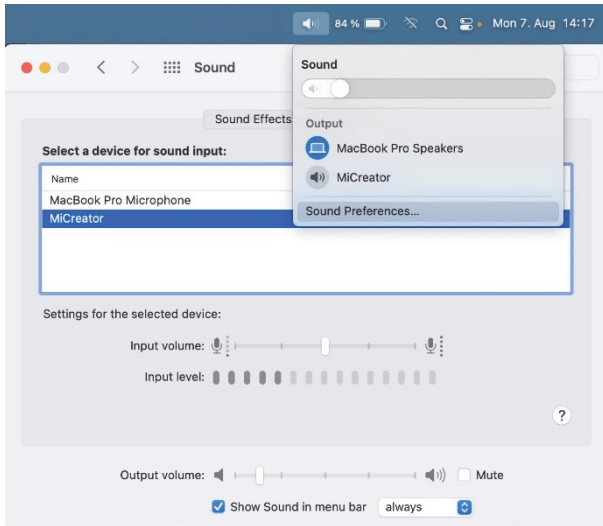
Right-click the loudspeaker symbol in the task bar

→ “Sound settings”

Further down, the level can be set from 0% to 100%, which corresponds to 0dB to 15dB.

Note: Alternatively, the same dialogue as in Windows 7/8/10 can be found under “More sound settings”, where the level in dB can be set.





macOS®

Simultaneously pressing the Ctrl button, click on the loudspeaker symbol in the menu bar

➔ “Sound Preferences...”

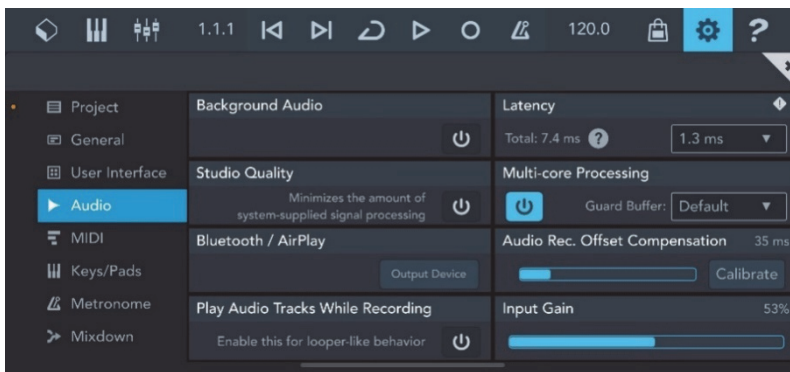
Change to the “Input” tab

➔ There, the input gain can be set under “Input volume” when the device MiCreator is selected.

Note: Alternatively, the dB value of the set input volume can be seen and set in the “Audio MIDI Setup”.

iOS/iPadOS®

On the iPad® or iPhone®, the additional input gain can be set, for example, using the “Steinberg Cubasis LE” app included within the scope of supply, which is activated by MiCreator Studio. The app needs to be downloaded from the App Store and MiCreator Studio must be connected to the device.



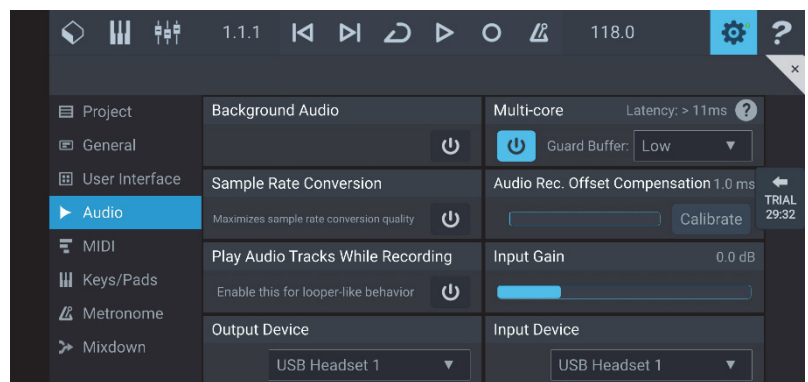
In the audio settings, an “Input Gain” slider can be found with an adjustment range from 0% to 100% - with 0% already muting the signal and 100% representing the maximum additional 15dB. To achieve the minimal gain of 0dB, the slider must be set to 1%.

Android™

An additional input gain can be set on Android™ in different ways depending on the device and the app – please consult your user manual for further details. As an example, Cubasis LE is shown, which can be downloaded from the Play Store as a 30-minute demo version.

Here an “Input Gain” slider can be found in the audio settings which allows up to 12dB of gain and -40dB dampening respectively.

Note: Depending on the device, MiCreator Studio is possibly shown as “USB Headset” as is shown in the example above.



Interchangeable cover plate

The cover plates are interchangeable, for example, with the red variant included within the scope of supply. To do this, the finger is inserted into the small recess below the cover plate located on the MiCreator Studio - the cover plate can now be easily removed.

When exchanging, the new cover plate can simply be snapped in - it is held by 4 magnets in the MiCreator Studio.

Note: In addition to the colour variants included within the scope of scope of supply, a white and a black version, both without printing, can be purchased separately for your own design as MiCreator DIY Plates Studio.

Transport of the MiCreator Studio

Always transport MiCreator Studio without cables attached. The included cloth bag protects the device from minor scratches, but it is no substitute for a padded carrying case. For the transport of the MiCreator Studio together with the MiCreator Satellite, the MCSC Carry Case can be purchased separately.



Technical specifications

Digital resolution: maximum 48 kHz/24-bit

Digital Connection: USB-C® – USB Audio Class 1.0/2.0 compliant

Microphone:

Capsule: Electret condenser

Polar pattern: Cardioid

Frequency range: 20 Hz – 20 kHz

Sensitivity: -35 dBFS/Pa (gain "low") or -15 dBFS/Pa (gain "high")

Equivalent inherent noise: 22dB SPL(A) (gain "high")

Maximum SPL: 130 dB SPL (gain "low")

TRS/TRRS headphone output:

Output power: 45mW (32 Ohm load)

Dynamic range: 89 dB(A)

Input/Output TRRS:

Input gain: 0 dB ("low") / 20 dB ("high")

Frequency range: 10 Hz – 20 kHz

Power supply for microphones: 3.9 V via 2.7 kΩ

Input impedance with instrument cable: 135 kΩ (input gain "low")

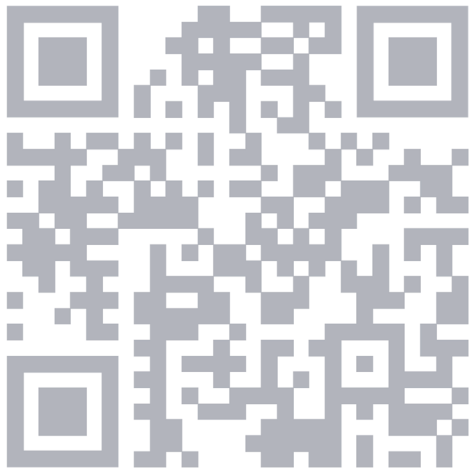
Maximum input level with instrument cable <0.1% THD: +10 dBu (input gain "low")

Dimensions: 155 x 60 x 37 mm

Weight: 370g

All specifications are subject to change without notice.

Find frequency charts and polar pattern at:



<https://austrian.audio/micreator>

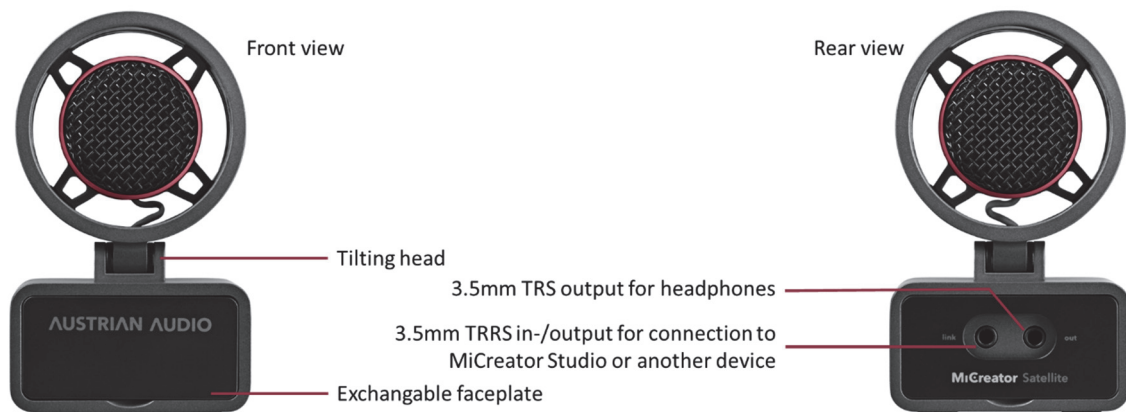
MiCreator Satellite

MiCreator Satellite is an analogue studio microphone with a 3.5mm TRRS jack for connection to an end device (such as a computer, tablet, mobile phone, etc.). A second 3.5mm TRS socket can also be used to plug in headphones.

MiCreator Satellite unfolds its full potential in conjunction with the MiCreator Studio.

Note: The acoustic properties of MiCreator Satellite and MiCreator Studio are identical, allowing stereo recordings or other 2-channel recordings such as interviews to be made at exactly the same level of quality for both channels.

Connections



Note: The 3.5mm TRRS jack designated "link" is wired according to the CTIA/headset standard. Since the microphone signal is on pin 4, interference with signal transmission can occur with an unsuitable TRRS cable. Therefore, only use the supplied MCC2 Link cable which has the signal ground and shielding on pin 3.

| Contact | Signal |
|---------|-----------------------------|
| 1 | Left headphone signal |
| 2 | Right headphone signal |
| 3 | Signal ground and shielding |
| 4 | Microphone signal |



Positioning and alignment

MiCreator Satellite is designed to operate on a table or microphone stand.

The 3/8" thread for mounting on a standard microphone stand is located on the underside - for mounting on stands with a 5/8" thread, the MCTA thread adapter is included.

There are also rubber feet on the underside, which guarantee that it stands securely on flat surfaces. The suspended capsule offers good isolation from structure-borne noise and even allows it to be used as a hand-held microphone.

For all these applications, it is recommended to always align the tilting capsule head with the sound source to be recorded, wherein the direction of maximum sensitivity of the capsule is straight at the grille.

Since the microphone has a cardioid polar pattern, sound coming from the back of the microphone



(i.e., the side with the connectors) is maximally suppressed.

The capsule head has an internal pop shield – if this is not sufficient, an optional pop filter, such as the Austrian Audio OCP8, can be purchased.

Note: If the swivel joint loosens after a long period of use, it can be tightened with a screwdriver (Torx® T8).

Plugging in headphones and starting up

MiCreator Satellite is connected to a device with a TRRS socket (such as the socket labelled "in/out" on the MiCreator Studio) using the included MCC2 Link cable. On the one hand, the microphone signal is transmitted to the end device, on the other hand, the playback is routed from the end device to the headphone jack on the MiCreator Satellite titled "out".

A headphone is connected to this "out" jack, for example, to hear other participants in a video conference.

Note: It is also possible to connect to a microphone jack on an end device, such as a camera via a Y-adapter (e.g., the HSA6 adapter included within the scope of supply of the MiCreator Satellite), provided that this also provides the necessary plug-in power - in case of doubt, consult the manufacturer of the end device.

Adjusting microphone and headphone gain

MiCreator Satellite does not have an internal amplification, so the volume depends on the end device. The recommended amplification of the microphone signal for spoken words is about 20 to 30dB for example, which can typically be achieved by devices such as laptops – consult the manufacturer.

The headphone amplification, i.e., the volume of the playback, is also set on the end device according to personal preference.

How to use MiCreator Satellite with MiCreator Studio

The MiCreator Studio microphone with USB-C® connection is designed to provide the optimal gain for MiCreator Satellite – refer to the section

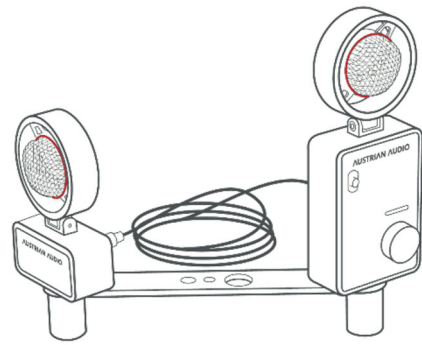


Adjusting the microphone gain or the Quick Start Guide included within the scope of supply for recommended microphone gain settings in conjunction with MiCreator Studio.

The two devices are connected via the MCC2 Link cable to the "in/out" socket of the MiCreator Studio and to the "link" socket of the MiCreator Satellite. In this case, the second headphone

output of the MiCreator Studio is redirected to the "out" jack of the MiCreator Satellite. Thus, with little cabling, for example, interviews can be conducted during which both people can get feeds via headphones.

Stereo recordings are also possible together with the MiCreator Studio, as the acoustic properties of MiCreator Studio and MiCreator Satellite are identical. For this purpose, the separately available MCMB MiniBar is recommended, on which both products can be mounted using the MCTA thread adapters.



Note: The MCMB MiniBar always guarantees a distance of 17cm between the capsules. This complies with the standard for the ORTF stereo technique defined by the "Office de Radiodiffusion Télévision Française". For the best possible result, the two microphones should be at an opening angle of 110° to each other.

Interchangeable cover plate

The cover plates are interchangeable, for example, with the red variant included within the scope of supply. To do this, the finger is inserted into the small recess below the cover plate located on the MiCreator Satellite - the cover plate can now be easily removed.

When exchanging, the new cover plate can simply be snapped in – it is held by 4 magnets in the MiCreator Satellite.

Note: In addition to the colour variants included within the scope of supply, a white and a black version, both blank, can be purchased separately as MiCreator DIY Plates Satellite to be designed on your own.

Transport of the MiCreator Satellite

Always transport MiCreator Satellite without cables attached. For the transport of the MiCreator Satellite together with the MiCreator Studio, the MCSC Carry Case can be purchased separately.



Technical specifications

Capsule: Electret condenser

Polar pattern: Cardioid

Frequency range: 20 Hz – 20 kHz

Sensitivity: 10 mV/Pa

Equivalent inherent noise: 22 dBSPL(A)

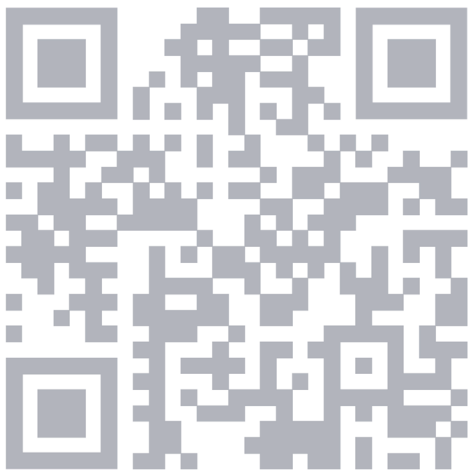
Maximum SPL: 130 dBSPL

Dimensions: 100 x 60 x 28 mm

Weight: 220g

All specifications are subject to change without notice.

Find frequency charts and polar pattern at:



<https://austrian.audio/micreator>

MiCreator Y-Lav



MiCreator Y-Lav is an analogue lavalier microphone with a 2m long cable with a 3.5mm TRRS jack plug for connecting to an end device (e.g., a computer, tablet, mobile phone, etc.). A 3.5mm TRS socket can also be used to plug in headphones.

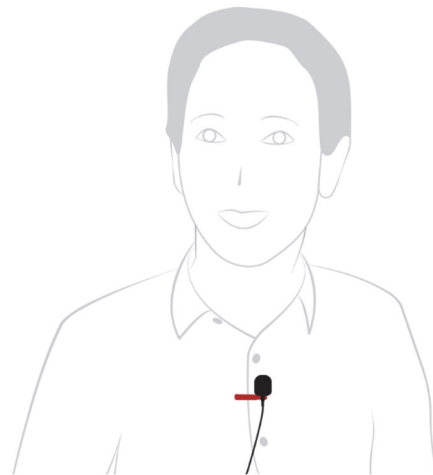
MiCreator Y-Lav unfolds its full potential in conjunction with **MiCreator Studio**.

Note: In interview situations, when attached to the reverse of a jacket or button tab of a shirt, the sensitivity of MiCreator Y-Lav perfectly matches the level of a MiCreator Studio microphone standing at the table.

Positioning and alignment

MiCreator Y-Lav is designed as a lavalier microphone for attachment to the reverse or similar. To do this, the metal clip, into which the microphone is snapped, is spread apart and attached to the garment.

Since the microphone has an omnidirectional characteristic, it picks up sound from all directions equally well. For an isolated recording of the voice, it should therefore be positioned as close to the mouth as possible - it is advisable to try several positions in order to achieve the best sound quality with the best possible voice isolation.



The windshield attached to the microphone also protects against breathing noises and should therefore always be used even when recording in a windless environment, as it does not change the sound.

Plugging in headphones and starting up

MiCreator Y-Lav is connected to a device with a TRRS socket (such as the socket labelled "in/out" on the MiCreator Studio). On the one hand, the microphone signal is transmitted to the end device; on the other hand, the playback is routed from the end device to the headphone jack on the MiCreator Y-Lav.

A headphone is connected to this jack, for example, to hear other participants in a video conference.

Note: It is also possible to connect to a microphone jack on an end device, such as a camera via a Y-adapter (e.g., the HSA6 adapter included within the scope of supply of the MiCreator Satellite), provided that this end device also provides the necessary plug-in power - in case of doubt, consult the manufacturer of the end device.

Adjusting the microphone gain

MiCreator Y-Lav does not have internal amplification, which means that the volume depends on the end device. The recommended amplification of the microphone signal for spoken words is about 20 to 30dB for example, which can typically be achieved by devices such as laptops – consult the

manufacturer.

The headphone amplification, i.e., the volume of the playback, is also set on the end device according to personal preference.

Using the MiCreator Y-Lav with MiCreator Studio

The MiCreator Studio microphone with USB-C® connection is designed to provide the optimal amplification for MiCreator Y-Lav - refer to the section **Adjusting Microphone Gain** for recommended microphone gain settings in conjunction with MiCreator Studio.

Also, when connecting the two devices via the "in/out" jack, the second headphone output of the MiCreator Studio is redirected to the 3.5mm TRS jack of the MiCreator Y-Lav. Thereby, for example, interviews can be conducted with little wiring, in which both people can get feeds via headphones.

Transport of the MiCreator Y-Lav

Always carry MiCreator Y-Lav in the included cloth bag. Be careful not to damage the cable by stretching or extending it excessively.

Technical specifications

Capsule: Electret condenser

Polar pattern: Omnidirectional

Frequency range: 20 Hz – 20 kHz

Sensitivity: 5 mV/Pa

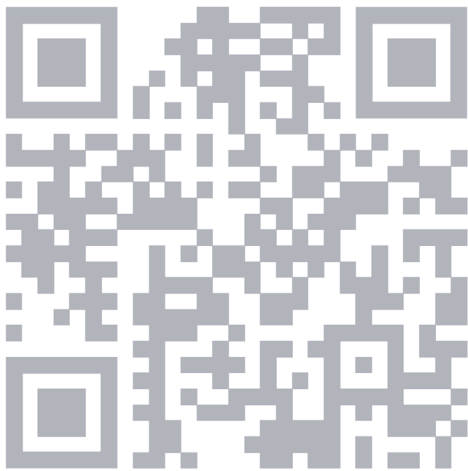
Maximum SPL: 120 dB SPL

Dimensions (only microphone with windscreen): 35 x 17 x 17 mm

Weight: 30 g

All specifications are subject to change without notice.

Find Frequency Charts and Polar Pattern at:



<https://austrian.audio/miccreator>

Troubleshooting

MiCreator Studio

| | |
|---|--|
| The LED bar flashes | Either the playback volume is set to minimum or the MMC2 Link cable is plugged into the "in/out" socket without being plugged into MiCreator Satellite |
| No microphone signal arrives at the end device | The microphone gain switch is set to "mute" |
| Although the microphone signal arrives at the end device, it cannot be heard in the headphones | The Monitoring Balance is set to the far right in red mode on the LED bar, which means that only the signal of a connected device is audible. |
| Although an instrument is connected via the MCC1 instrument cable, it cannot be heard in the headphones | The Monitoring Balance is set to the far left in red mode on the LED bar, which means that only the signal of the microphone is audible. |

MiCreator Satellite

| | |
|---|--|
| The microphone is plugged into a computer, but it is not recognized | Depending on the computer model, headphones may need to be plugged into the "out" jack of MiCreator Satellite so that the microphone is recognized when plugged in |
|---|--|

MiCreator Y-Lav

| | |
|---|--|
| The microphone is plugged into a computer, but it is not recognized | Depending on the computer model, headphones may need to be plugged into the 3.5mm jack of MiCreator Y-Lav so that the microphone is recognized when plugged in |
|---|--|

Frequently asked questions at:



<https://austrian.audio/micreator>

Legal information



Declaration of conformity is available at the following internet address:
<https://austrian.audio>



At the end of the product's life, disconnect the housing, electronics and cables, and dispose of all components in accordance with local waste disposal regulations.



MiCreator Y-Lav: Legal information for China (针对中国的法律信息):



| 部件名称 | 有害物质 | | | | | |
|------|--------|--------|--------|--------------|------------|--------------|
| | 铅 (Pb) | 汞 (Hg) | 镉 (Cd) | 六价铬 (Cr(VI)) | 多溴联苯 (PBB) | 多溴二苯醚 (PBDE) |
| 麦克风 | X | ○ | ○ | ○ | ○ | ○ |

本表格依据 SJ/T 11364 的规定编制。
 ○: 表示该有害物质在该部件所有均质材料中的含量均在 GB/T 26572 规定的限量要求以下。
 X: 表示该有害物质至少在该部件的某一均质材料中的含量超出 GB/T 26572 规定的限量要求。

USB-C® is a registered trademark of the USB Implementers Forum.

iPhone®, iPad®, Mac®, macOS® and iPadOS® are trademarks of Apple Inc., registered in the U.S. and other countries and regions.

Linux® is the registered trademark of Linus Torvalds in the U.S. and other countries.

Android™ is a trademark of Google LLC.

Sony is a registered trademark of Sony Group Corporation.

PS4™ and PS5™ are registered trademarks or trademarks of Sony Interactive Entertainment Inc.

Windows® is a trademark of the Microsoft group of companies.

Torx® is a registered trademark of Acument Intellectual Properties, LLC in the U.S.

Copyright Austrian Audio 2023.

All rights reserved
Austrian Audio GmbH
Eitnergasse 15
1230 Vienna, Austria

MiCreator_Manual_20231023