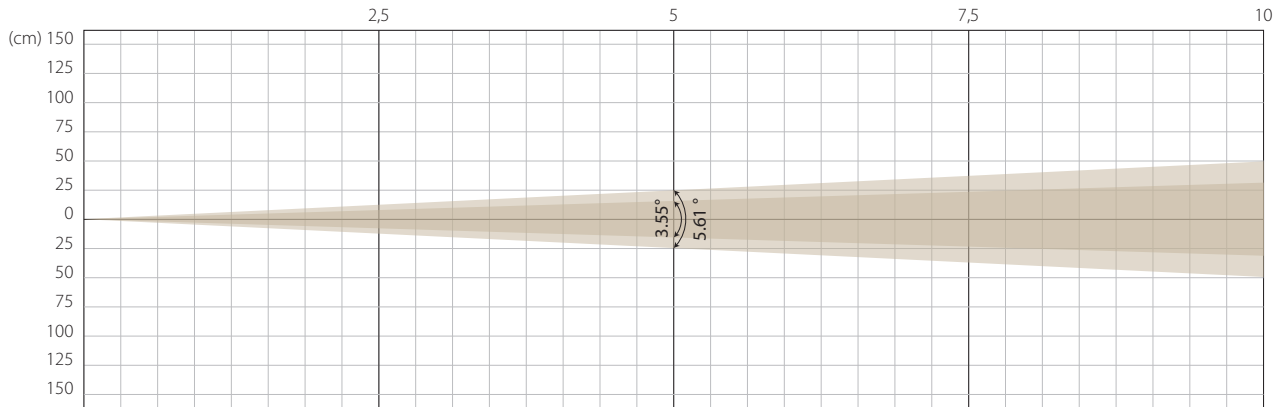


**MIN ZOOM**

**Beam opening**

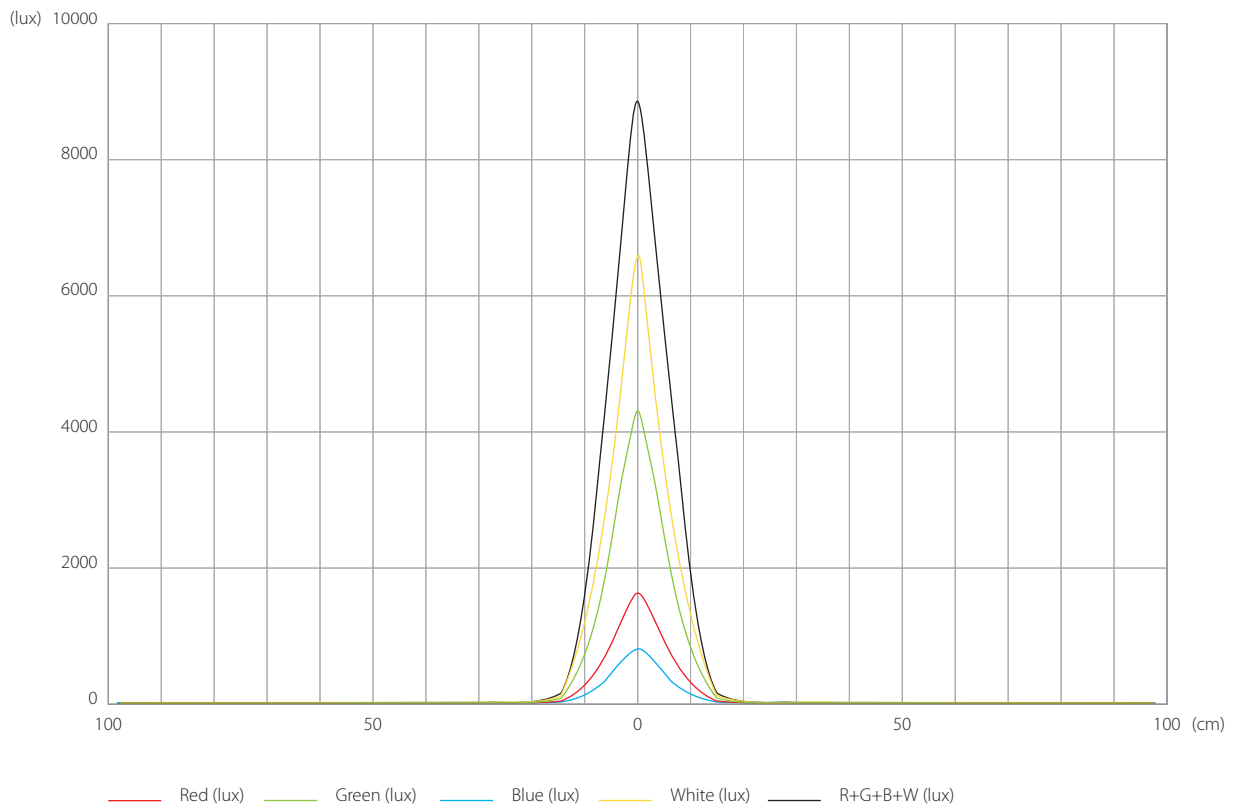


Diameter 1/2 peak (m) 0.311  
Diameter 1/10 peak (m) 0.49

**Intensity**

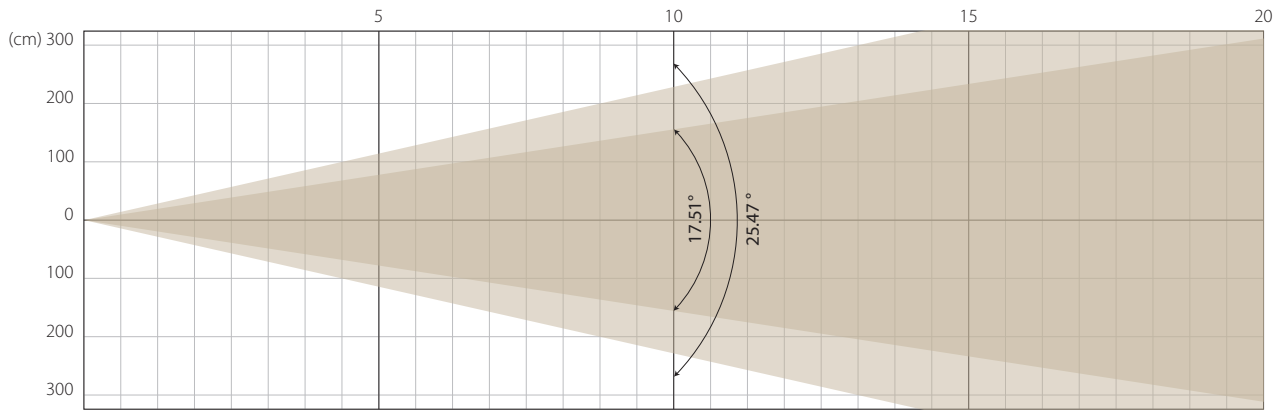
| Distance (m)   | 2,5   |       | 5    |       | 7,5  |       | 10   |       | 12,5 |       | 15  |       |
|----------------|-------|-------|------|-------|------|-------|------|-------|------|-------|-----|-------|
|                | lux   | FT CD | lux  | FT CD | lux  | FT CD | lux  | FT CD | lux  | FT CD | lux | FT CD |
| <b>Red</b>     | 6484  | 602   | 1621 | 151   | 720  | 67    | 405  | 38    | 259  | 24    | 180 | 17    |
| <b>Green</b>   | 17184 | 1596  | 4296 | 399   | 1909 | 177   | 1074 | 100   | 687  | 64    | 477 | 44    |
| <b>Blue</b>    | 3156  | 293   | 789  | 73    | 351  | 33    | 197  | 18    | 126  | 12    | 88  | 8     |
| <b>White</b>   | 26220 | 2436  | 6555 | 609   | 2913 | 271   | 1639 | 152   | 1049 | 97    | 728 | 68    |
| <b>R+G+B+W</b> | 35612 | 3308  | 8903 | 827   | 3957 | 368   | 2226 | 207   | 1424 | 132   | 989 | 92    |

**Illuminance distribution (5m)**



**MIDDLE ZOOM**

**Beam opening**

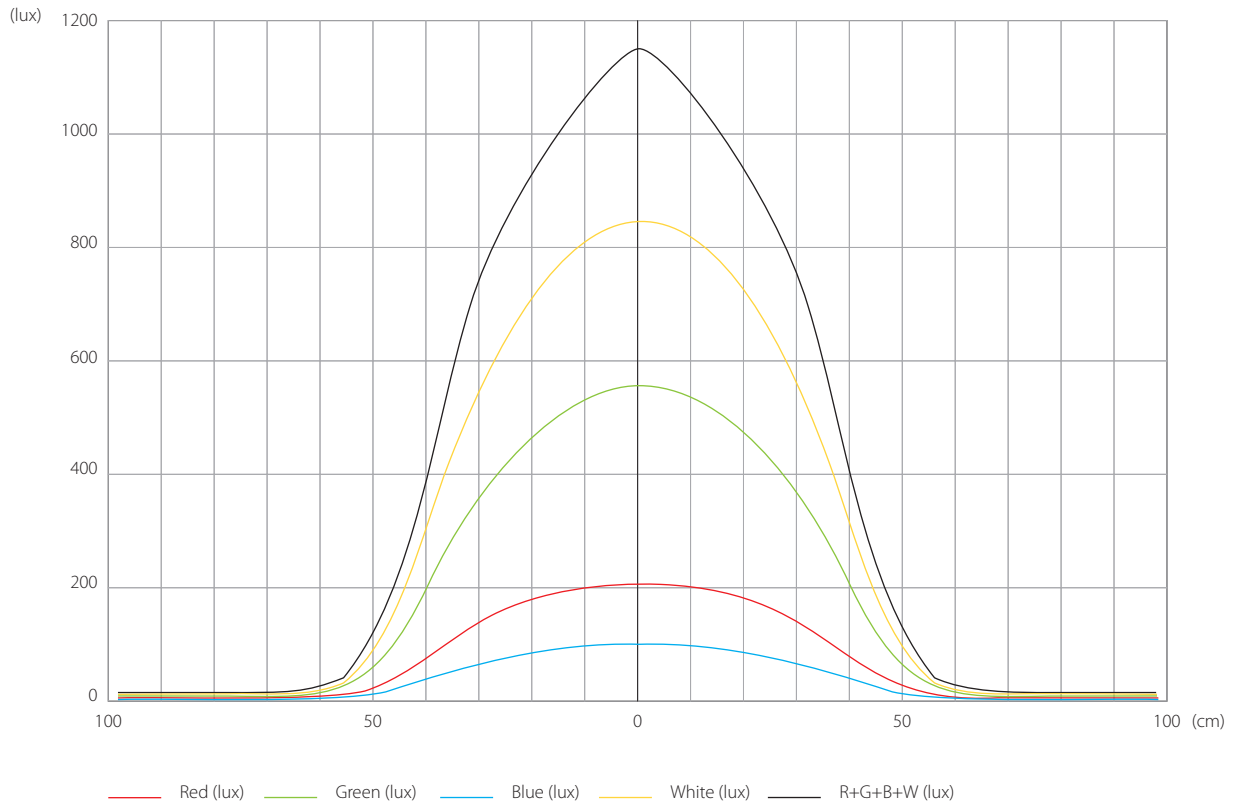


Diameter 1/2 peak (m) 1.54  
Diameter 1/10 peak (m) 2.26

**Intensity**

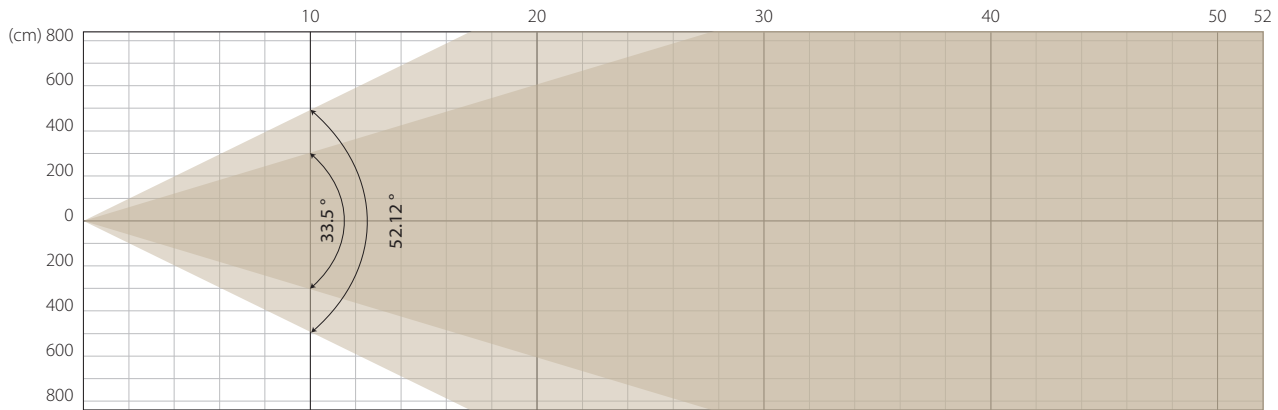
| Distance (m)   | 2,5  |       | 5    |       | 7,5 |       | 10  |       | 12,5 |       | 15  |       |
|----------------|------|-------|------|-------|-----|-------|-----|-------|------|-------|-----|-------|
|                | lux  | FT CD | lux  | FT CD | lux | FT CD | lux | FT CD | lux  | FT CD | lux | FT CD |
| <b>Red</b>     | 940  | 87    | 235  | 22    | 104 | 10    | 59  | 5     | 38   | 3     | 26  | 2     |
| <b>Green</b>   | 2148 | 200   | 537  | 50    | 239 | 22    | 134 | 12    | 86   | 8     | 60  | 6     |
| <b>Blue</b>    | 464  | 43    | 116  | 11    | 52  | 5     | 29  | 3     | 19   | 2     | 13  | 1     |
| <b>White</b>   | 2724 | 253   | 681  | 63    | 303 | 28    | 170 | 16    | 109  | 10    | 76  | 7     |
| <b>R+G+B+W</b> | 4572 | 425   | 1143 | 106   | 508 | 47    | 286 | 27    | 183  | 17    | 127 | 12    |

**Illuminance distribution (5m)**



**MAX ZOOM**

**Beam opening**



Diameter 1/2 peak (m) 3.01  
Diameter 1/10 peak (m) 4.89

**Intensity**

| Distance (m)   | 2,5  |       | 5   |       | 7,5 |       | 10  |       | 12,5 |       | 15  |       |
|----------------|------|-------|-----|-------|-----|-------|-----|-------|------|-------|-----|-------|
|                | lux  | FT CD | lux | FT CD | lux | FT CD | lux | FT CD | lux  | FT CD | lux | FT CD |
| <b>Red</b>     | 256  | 24    | 64  | 6     | 28  | 3     | 16  | 1     | 10   | 1     | 7   | 1     |
| <b>Green</b>   | 580  | 54    | 145 | 13    | 64  | 6     | 36  | 3     | 23   | 2     | 16  | 1     |
| <b>Blue</b>    | 120  | 11    | 30  | 3     | 13  | 1     | 8   | 1     | 5    | 0     | 3   | 0     |
| <b>White</b>   | 672  | 62    | 168 | 16    | 75  | 7     | 42  | 4     | 27   | 2     | 19  | 2     |
| <b>R+G+B+W</b> | 1172 | 109   | 293 | 27    | 130 | 12    | 73  | 7     | 47   | 4     | 33  | 3     |

**Illuminance distribution (5m)**

