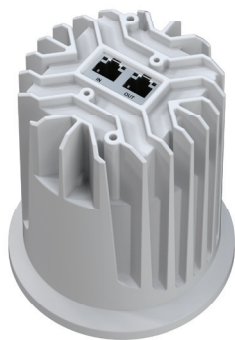


LOGIC AR111 Downlight S



FEATURES

Illuminarc Logic AR111 downlight luminaires are designed for the smallest of area lighting up to full room illumination. With their high quality 4-color RGBW color mixing system, Downlights provide soft, pleasing accent light and indirect illumination of bright, saturated colors and white calibrated CCT presets. Downlights utilize Power Over Ethernet (POE) technology, receiving power and control via an advanced driver. Powerful control options include Calendar Scheduling via onboard webserver, DMX, RDM, Art-Net, Art-RDM, sACN, or you can use the included 8-button wall controller to trigger customizable looks. Go green with higher efficiency, lower cost without compromising quality or quantity.



Rear View

SPECIFICATIONS

OPTICAL

- Light Source: 1 LEDs (quad-color RGBW) 20 W, (8.75 A)
- Light Source Lifespan: 50,000 hours based on LED manufacturer's specifications
- White LED Native CCT: 3000 K
- Installed Optics: Medium filter
- Included Optics: Wide filter
- Open Optics
 - Beam Angle: 8.2°
 - Field Angle: 7.8°
 - Cutoff angle: 46.8°
 - Lumens: 530
 - Base Illuminance @ 5 m: 354 lux
 - Efficacy: 34 lm / W
- Medium filter (installed)
 - Beam Angle: 48.8°
 - Field Angle: 96.6°
 - Cutoff angle: 126°
 - Lumens: 449
 - Base Illuminance @ 5 m: 20 lux
 - Efficacy: 29 lm / W
- Medium filter with honeycomb filter (installed)
 - Beam Angle: 30.7 °
 - Field Angle: 62.2 °
 - Cutoff angle: 87.4°
 - Lumens: 196
 - Base Illuminance @ 5 m: 20 lux
 - Efficacy: 13 lm / W
- Wide filter (included)
 - Beam Angle: 61.6°
 - Field Angle: 113.7°
 - Cutoff angle: 140.5°
 - Lumens: 440
 - Base Illuminance @ 5 m: 15 lux
 - Efficacy: 29 lm / W
- Wide filter with honeycomb filter (included)
 - Beam Angle: 32.2°
 - Field Angle: 65 °
 - Cutoff angle: 100.7°
 - Lumens: 200
 - Base Illuminance @ 5 m: 15 lux
 - Efficacy: 11 lm / W
- Color Temperature Presets: Built-in, 1,800 to 10,000 K

CONSTRUCTION/PHYSICAL

- Dimensions: 4.35 x 4.35 x 5.73 in [110.62 x 110.62 x 145.58 mm]
- Weight: 1.67 lb (0.76 kg)
- Fixture Color: White
- Housing Material: Aluminum (ADC12)
- Lens Cover: Frosted polycarbonate
- Mounting Options: Logic AR111 Trim Ring, Logic AR111 Mounting Kit

CONTROL SPECIFICATIONS

- Control Protocol: USITT DMX-512a, RDM, Art-Net, Art-RDM, sACN via Logic Drive 2X
- Operating Modes: Selectable personalities, via Logic Drive 2X
 - Red (1-channel): Red
 - Green (1-channel): Green
 - Blue (1-channel): Blue
 - White (1-channel): White
 - TW (2-channel): Dimmer, White CCT Preset
 - RGB (3-channel): Red, Green, Blue
 - RGBW (4-channel): Red, Green, Blue, White
 - RGBW+D (5-channel): Red, Green, Blue, White, Dimmer
 - FULL (10-channel): Dimmer, Red, Green, Blue, White, White CCT Presets, Strobe, Auto Programs, Dimmer Speed Presets
- Standalone Control: Yes, Logic Wall Con via Logic Drive 2X
- Fixture setup: Logic Drive 2X (RDM, Webserver or Display), Art-RDM (DMX Workshop)

ELECTRICAL

- Input Voltage: 52-56 VDC
 - Power and Current (fixture via POE): 15.5 W
- Power Supply: POE++, IEEE 802.3 bt, type 4, class 8 (via Logic Drive 2X)
- Dimmer: Electronic
- Power Linking: 5 units per port via POE++, IEEE 802.3 bt, type 4
- Power/Data Connection: 2 Ethernet (RJ45)
- Required Cable Specifications
 - Cable type: CAT6/A, Shielded
 - Conductor Diameter: ≥ 23 AWG (≥ 0.5733 mm)
 - Conductor Material: Solid Bare Copper Wire (stranded not supported)
 - Cable Terminator: RJ45, CAT6/A, Shielded
- Cable Length(s) Supported:
 - Total Max Cable Length (drive to first fixture): ≤ 100 m / 328 ft
 - Total Max Cable Length (drive to last fixture): ≤ 140 m / 460 ft
 - Total Max Cable Length (first fixture to last fixture): ≤ 40 m / 131 ft

- Recommended Cable (or equivalent): Belden 2413F, 2412F

THERMAL SPECIFICATIONS

- Cooling: Convection
- Operating Temperature Range: -4 °F to 113 °F (-20 °C to 45 °C)
- Maximum Surface Temperature: 158 °F (70 °C)
- Minimum Distance to Flammable Surface: 11.8 in (0.3 m)
- BTU/hr: 52.8

REGULATORY & VOLUNTARY QUALIFICATION

- Certification Listings: CE, MET, FCC, ROHS
- US Safety: UL 2108, UL 1598A
- Canadian Safety : CSA-C22.2 No. 250.2
- City of Chicago Electric Code Safety : Chicago Plenum (CCEA), Section 18-27-300.22(c)[2]
- Environment: Dry location, IP20, All indoor permanent installations.
 - Please refer to the User Manual for more detailed information on installation.
- Warranty: 36-month manufacturer's limited warranty (for covered regions only)
- Installation Orientation: Any

ACCESSORIES

- Required: Logic Drive 2X
- Included:
 - Wide filter
 - Recessed lighting hi-hat mounting bracket
 - Hi-hat Trim Ring alignment bracket
 - Pendant hanging bracket
- Optional:
 - Logic AR111 Honeycomb filter
 - Logic AR111 Trim Ring (white)
 - Logic AR111 Mounting Kit (for Wall Mount, Ceiling Mount, and hanging Pendant)
 - RDM2GO



Honey Comb Filter



Trim Ring