



# KARIF LT

PHOTOMETRY



**AYRTON**  
Digital Lighting





<b>Total Flux</b>	13974 lm (@zoom 128, integrating sphere measurement, Fan mode auto)
-------------------	---

<b>CCT @LED engin</b>	8000 (±500K)
<b>CCT @open</b>	7000 (±500K)
<b>Ra @open</b>	70 (±2)
<b>TLCI</b>	49
<b>TM-30</b>	Rf: 73.3 Rg: 92.1

<b>Fan Mode</b>	<b>Noise Level (dBA)</b>	<b>by Goniometer (lm)</b>	<b>by Sphere (lm)</b>
<b>Auto</b>	45,5	11215	13902
<b>Stage</b>	47	11442	13974
<b>Silence</b>	39	7459	9887
<b>Super Silence</b>	35	5498	7545

Note: noise measured @1m distance, static status, ambient 31 dBA.

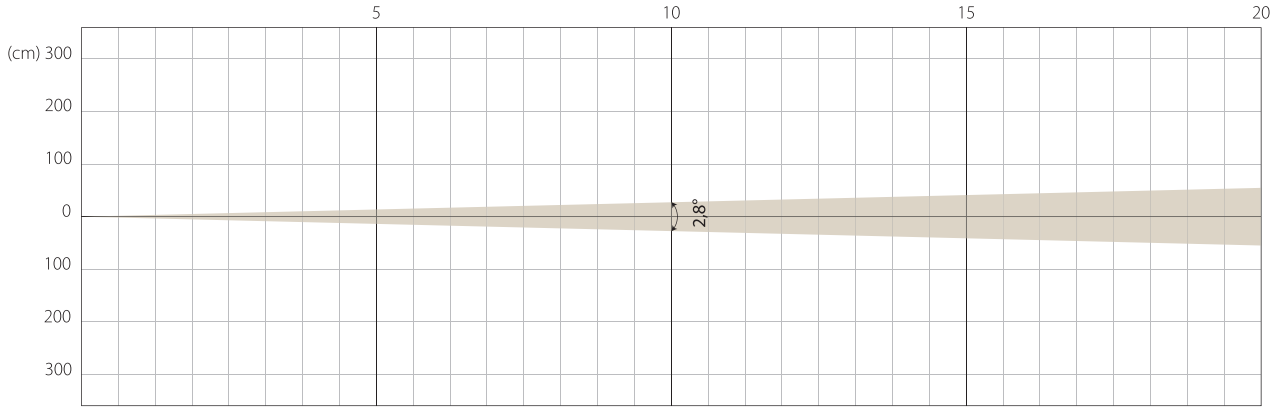
<b>Voltage / Power</b>	100-240V, 50-60HZ	550 W
<b>Fixture Dimension / Weight</b>	365 x 622 x 212 mm	27 kg
<b>Packing Dimension / Weight</b>	435 x 750 x 285 mm	37.3 kg

# AUTO MODE

NATIVE CRI GREATER THAN 70

MIN ZOOM

## Beam Opening

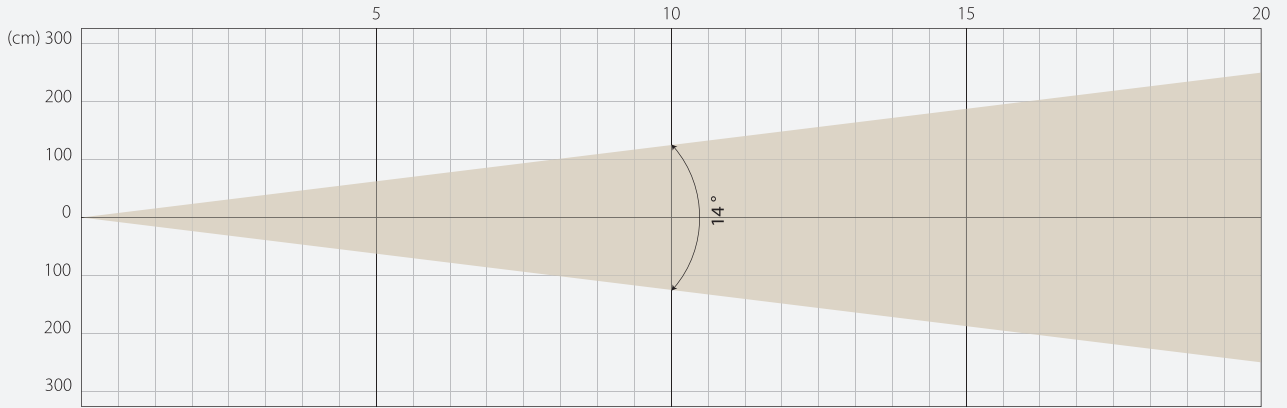


## Intensity

Distance (m)	5		10		15		20	
unit	lux	diameter	lux	diameter	lux	diameter	lux	diameter
White	140927	0,24	35232	0,49	15659	0,73	8808	0,98

MIDDLE ZOOM

## Beam Opening

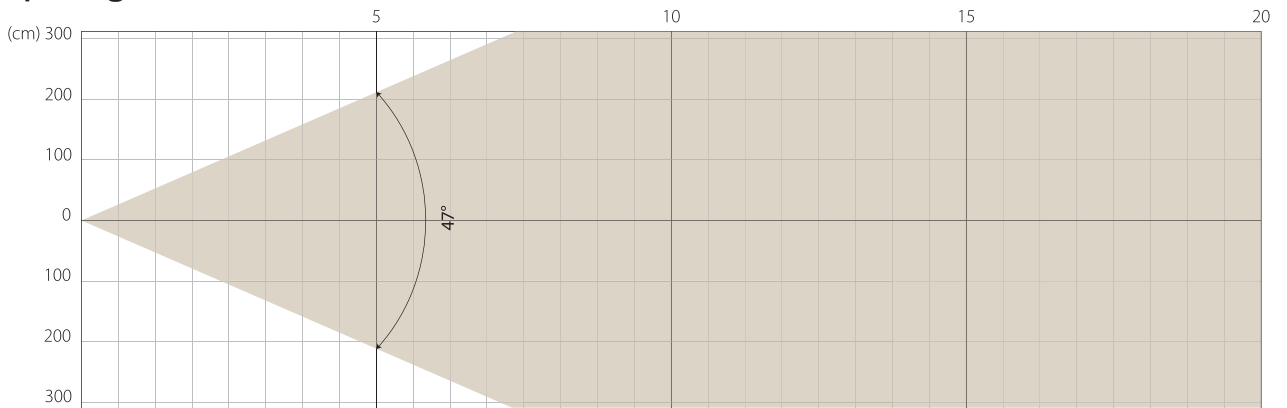


## Intensity

Distance (m)	5		10		15		20	
unit	lux	diameter	lux	diameter	lux	diameter	lux	diameter
White	14955	1,23	3739	2,46	1662	3,68	935	4,91

MAX ZOOM

## Beam Opening



## Intensity

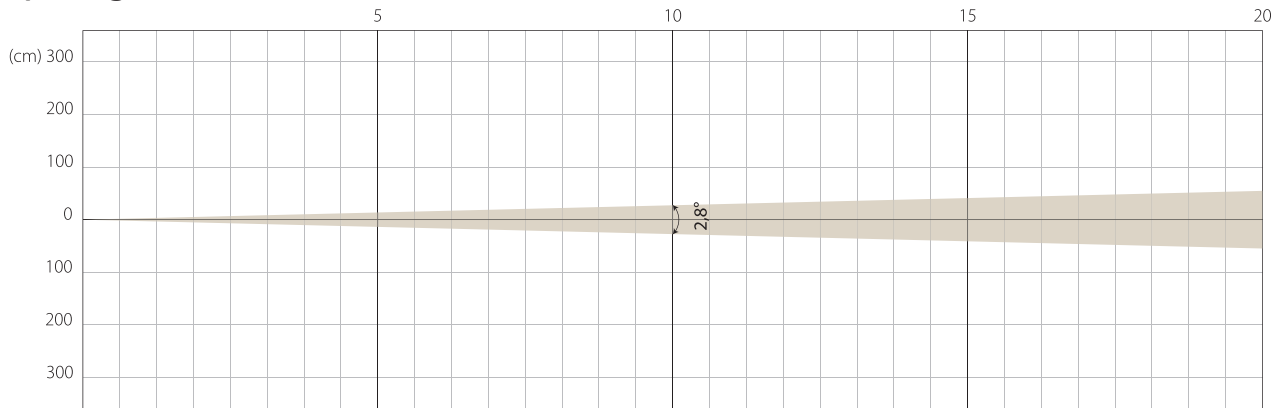
Distance (m)	5		10		15		20	
unit	lux	diameter	lux	diameter	lux	diameter	lux	diameter
White	1179	4,35	295	8,7	131	13,04	74	17,39

# STAGE MODE

NATIVE CRI GREATER THAN 70

MIN ZOOM

## Beam Opening

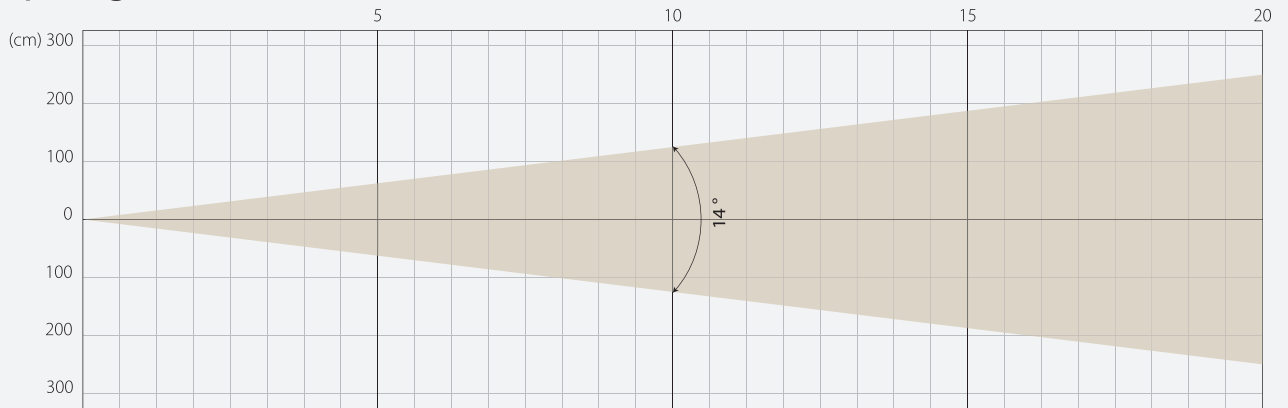


## Intensity

Distance (m)	5		10		15		20	
unit	lux	diameter	lux	diameter	lux	diameter	lux	diameter
White	145629	0,24	36407	0,49	16181	0,73	9102	0,98

MIDDLE ZOOM

## Beam Opening

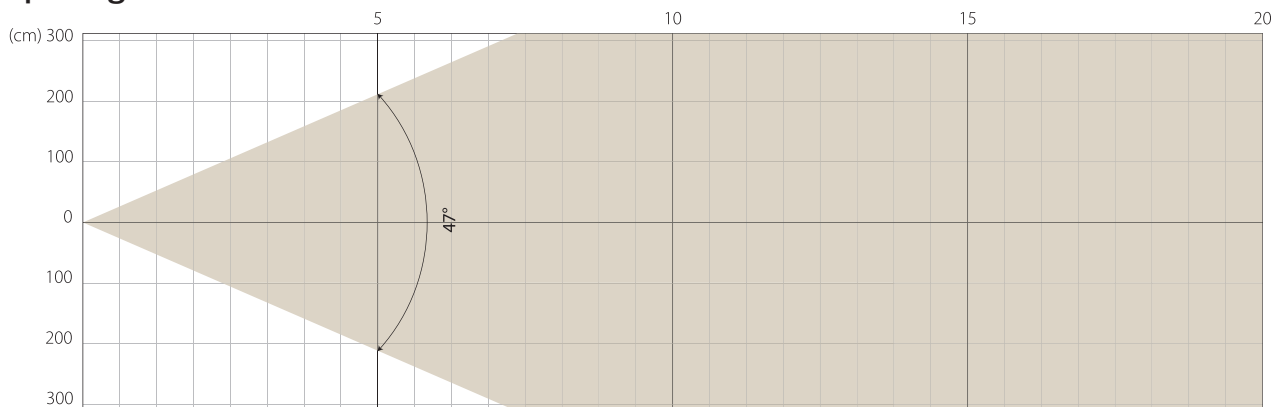


## Intensity

Distance (m)	5		10		15		20	
unit	lux	diameter	lux	diameter	lux	diameter	lux	diameter
White	15503	1,23	3876	2,46	1723	3,68	969	4,91

MAX ZOOM

## Beam Opening



## Intensity

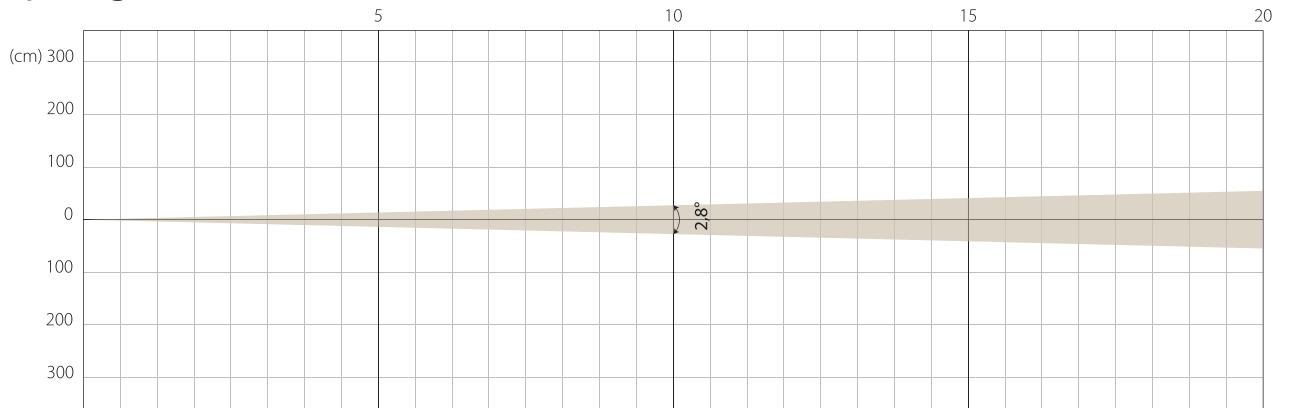
Distance (m)	5		10		15		20	
unit	lux	diameter	lux	diameter	lux	diameter	lux	diameter
White	1223	4,35	306	8,7	136	13,04	76	17,39

# SILENCE MODE

NATIVE CRI GREATER THAN 70

MIN ZOOM

## Beam Opening

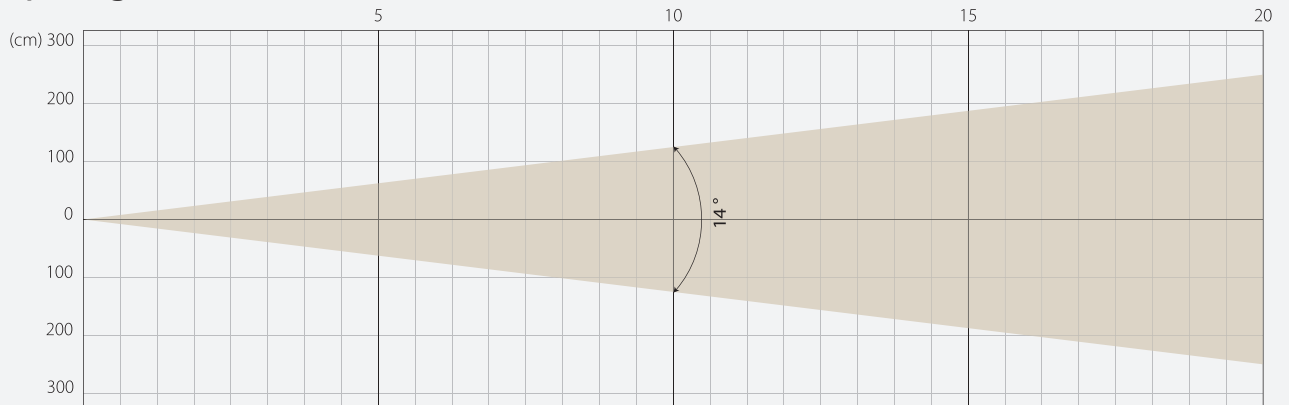


## Intensity

Distance (m)	5		10		15		20	
unit	lux	diameter	lux	diameter	lux	diameter	lux	diameter
White	99617	0,24	24904	0,49	11069	0,73	6226	0,98

MIDDLE ZOOM

## Beam Opening

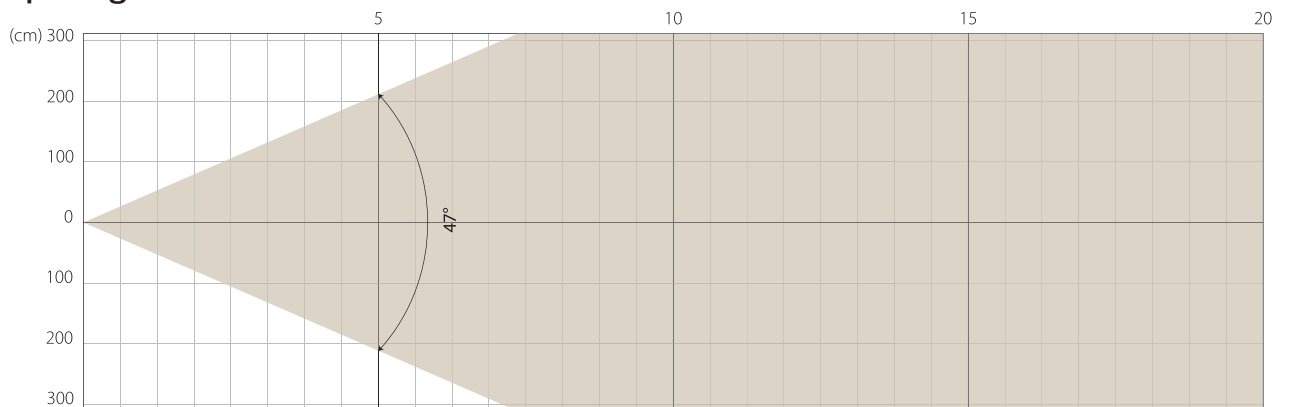


## Intensity

Distance (m)	5		10		15		20	
unit	lux	diameter	lux	diameter	lux	diameter	lux	diameter
White	9559	1,23	2390	2,46	1062	3,68	597	4,91

MAX ZOOM

## Beam Opening



## Intensity

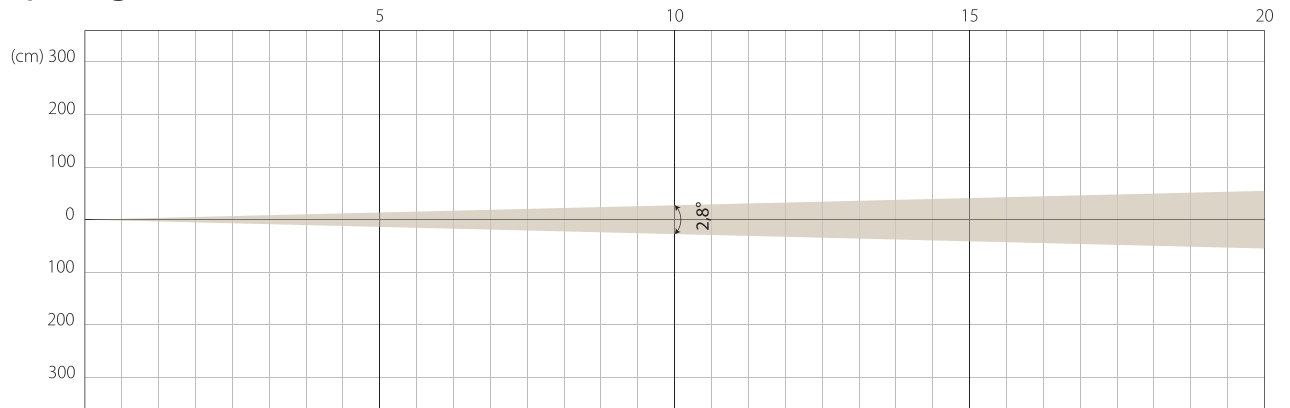
Distance (m)	5		10		15		20	
unit	lux	diameter	lux	diameter	lux	diameter	lux	diameter
White	825	4,35	206	8,7	92	13,04	52	17,39

# SUPER SILENCE MODE

NATIVE CRI GREATER THAN 70

MIN ZOOM

## Beam Opening

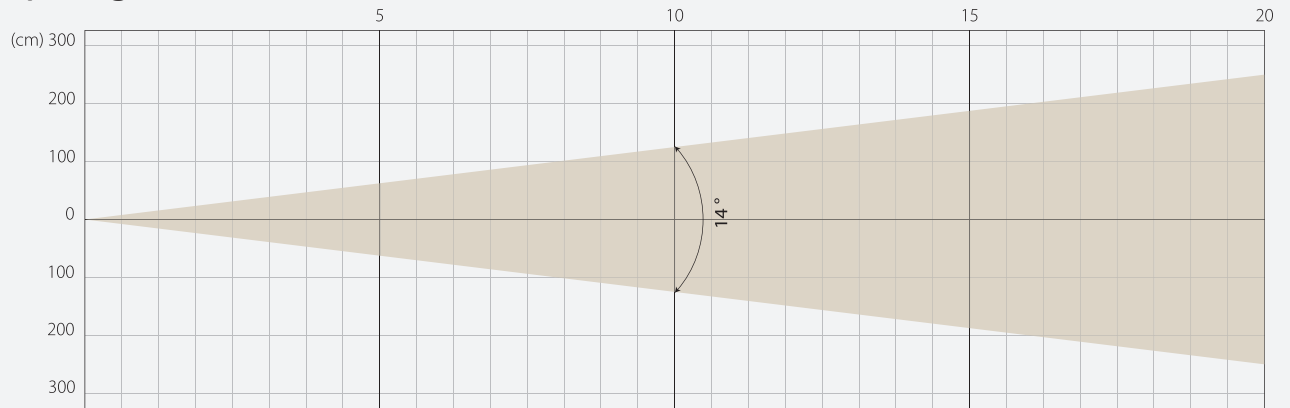


## Intensity

Distance (m)	5		10		15		20	
unit	lux	diameter	lux	diameter	lux	diameter	lux	diameter
White	68310	0,24	17077	0,49	7590	0,73	4269	0,98

MIDDLE ZOOM

## Beam Opening

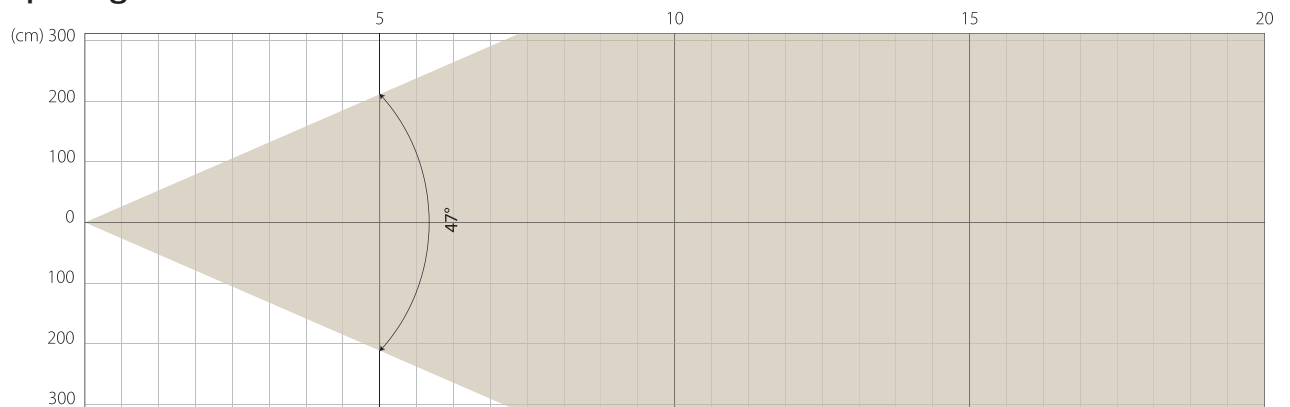


## Intensity

Distance (m)	5		10		15		20	
unit	lux	diameter	lux	diameter	lux	diameter	lux	diameter
White	7687	1,23	1922	2,46	854	3,68	480	4,91

MAX ZOOM

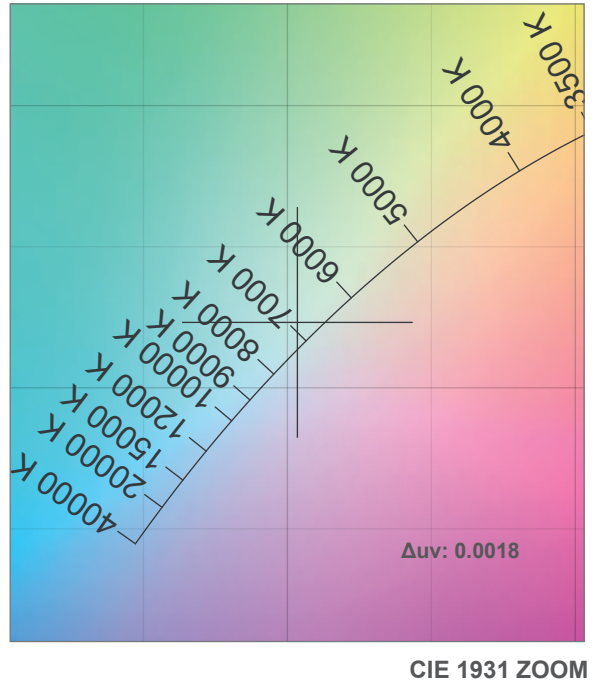
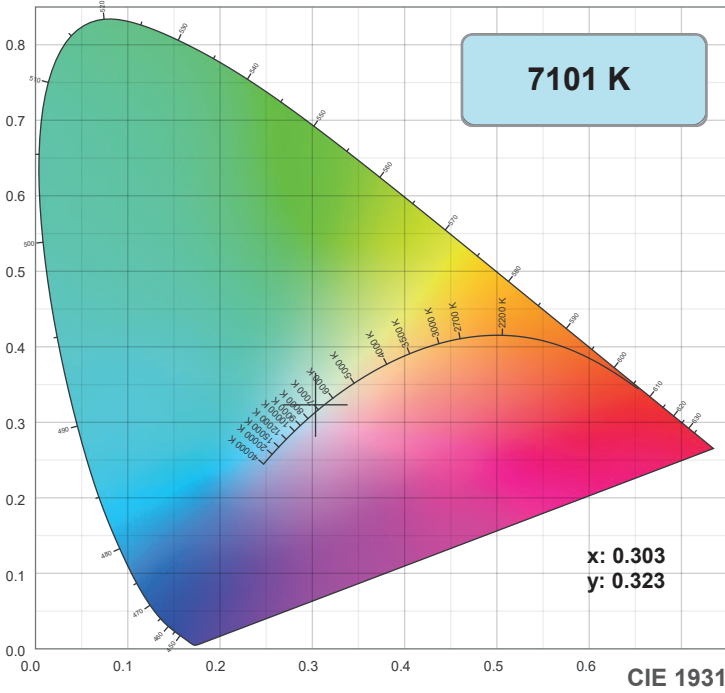
## Beam Opening



## Intensity

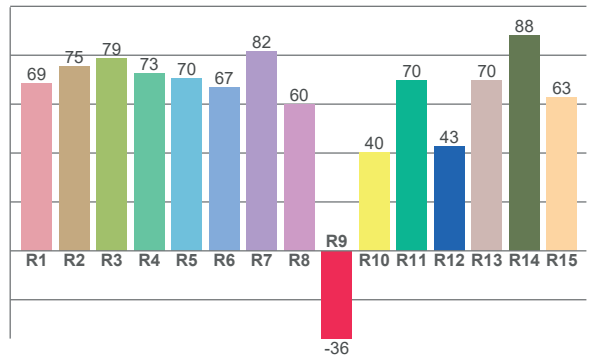
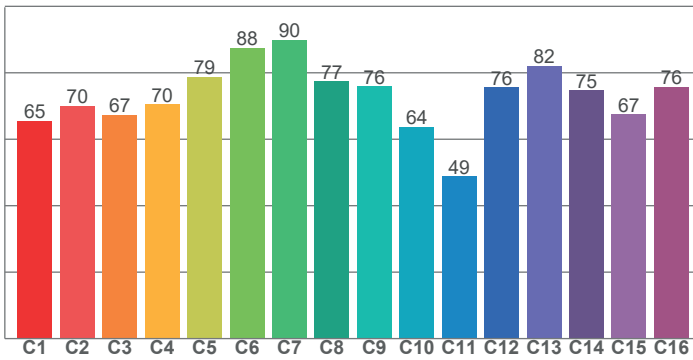
Distance (m)	5		10		15		20	
unit	lux	diameter	lux	diameter	lux	diameter	lux	diameter
White	604	4,35	151	8,7	67	13,04	38	17,39

# COLOR DETAILS



TM-30: 73.3

CRI: 71.8 (R1-R8)



CRI R values, only R1-R8 are used to calculate final CRI value

R1	R2	R3	R4	R5	R6	R7	R8	R9	R10	R11	R12	R13	R14	R15
68.6	75.4	78.7	72.7	70.4	67.0	81.6	60.0	-35.9	40.5	69.6	42.9	69.6	88.1	62.6

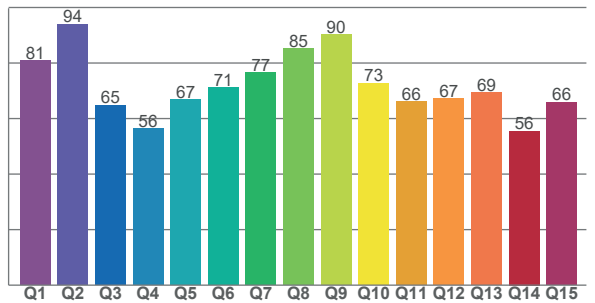
TM30 C values, 16 binned values out of total of 99 C values

C1	C2	C3	C4	C5	C6	C7	C8	C9	C10	C11	C12	C13	C14	C15	C16
65.5	70.0	67.4	70.5	78.8	87.6	89.8	77.4	75.9	63.7	48.9	75.6	82.1	74.7	67.5	75.8

CQS Q values

Q1	Q2	Q3	Q4	Q5	Q6	Q7	Q8	Q9	Q10	Q11	Q12	Q13	Q14	Q15
80.9	94.0	64.8	56.4	66.9	71.2	76.5	85.3	90.2	72.7	66.2	67.3	69.4	55.6	65.9

CQS: 70.1



## Color parameters

Color temperature	Color rendering index	Red component	Color fidelity	Color gamut	Color quality scale	Color coordinate cie 1931	Color coordinate cie 1931	Color coordinate	Color coordinate	Color deviation from black body
CCT	CRI	CRI R9	TM30 Rf	TM30 Rg	CQS	x	y	u	v	Δuv
7101 K	71.8	-35.9	73.3	92.1	70.1	0.303	0.323	0.194	0.309	0.0018

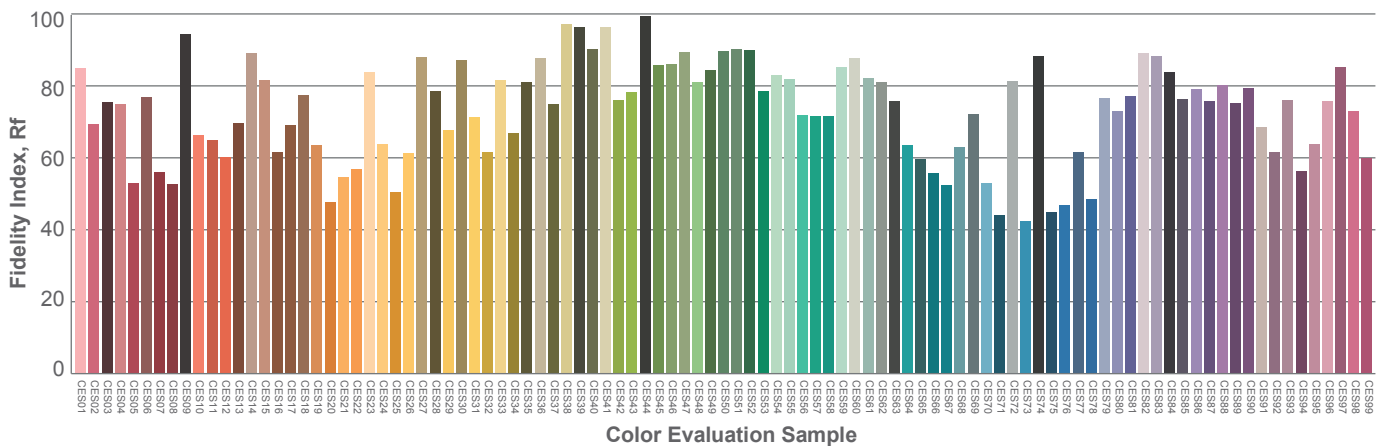
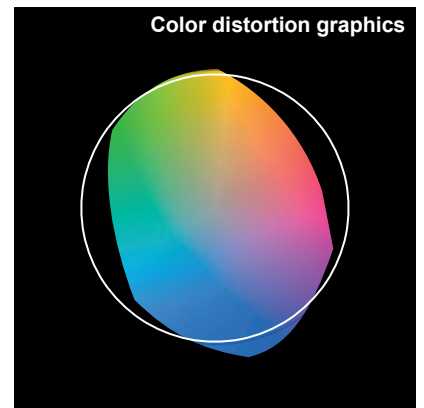
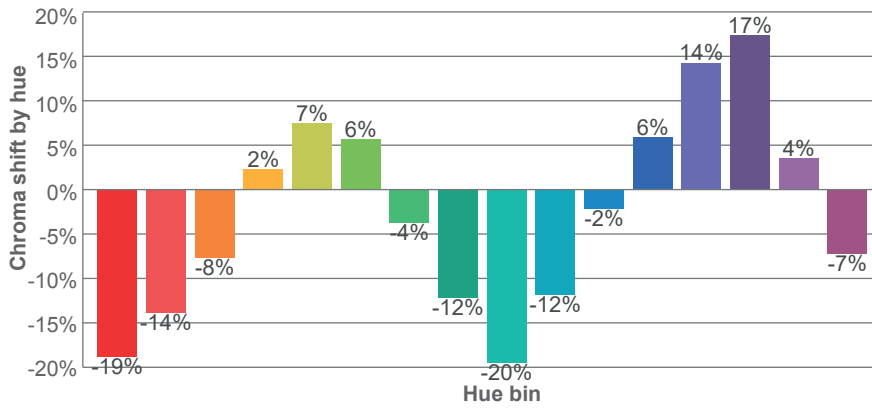
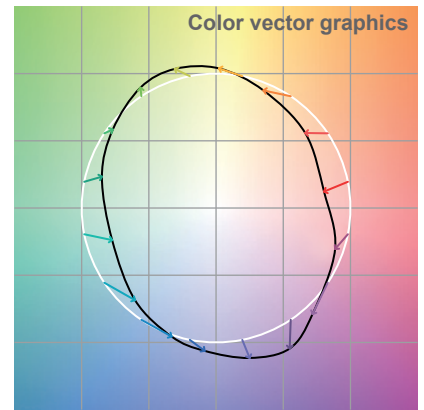
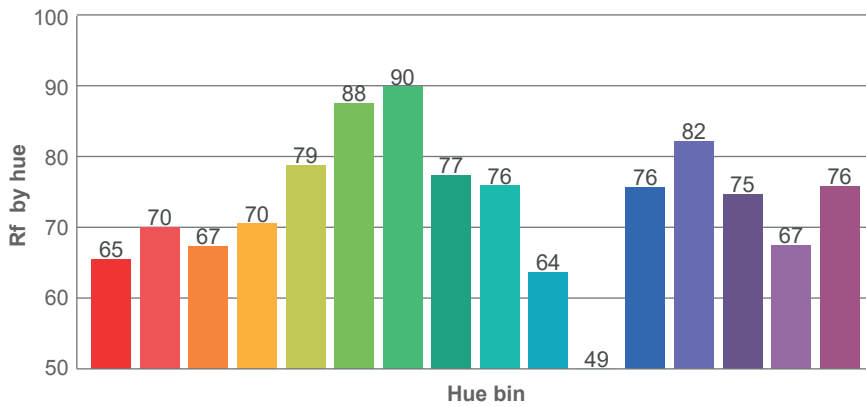
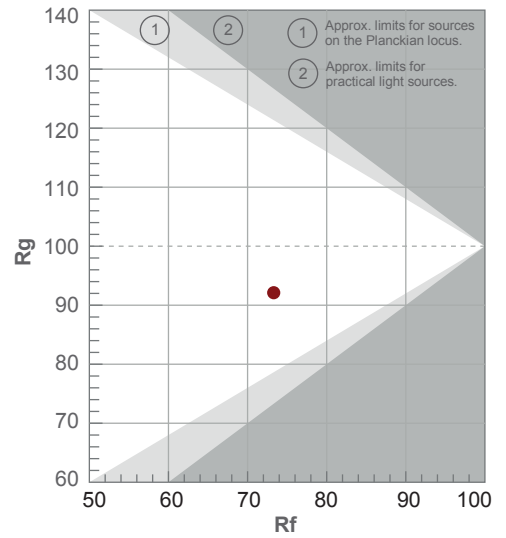


# TM-30 DETAILS

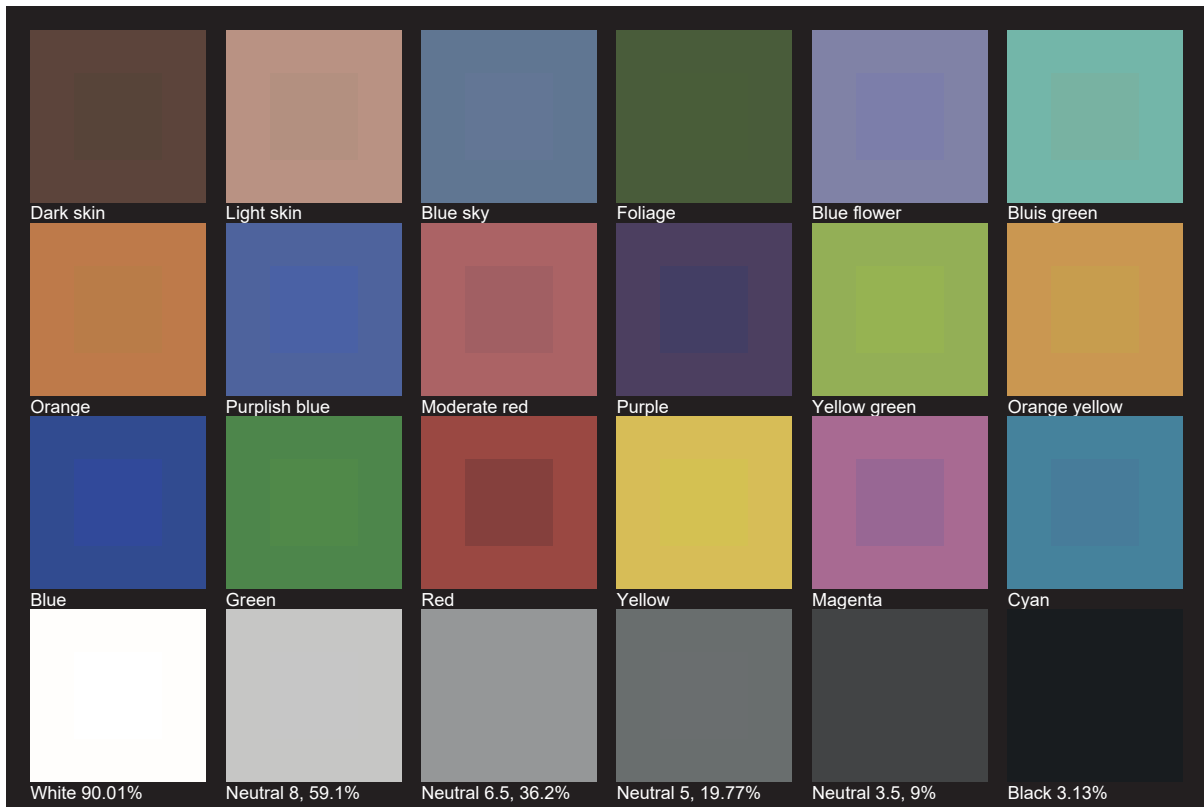
**Rf 73.3**  
Fidelity index Rf

**Rg 92.1**  
Gamut index Rg

Hue Bin	R <sub>f</sub>	Shifts (%)	
		Chroma	Hue
1	65	-19%	-4%
2	70	-14%	10%
3	67	-8%	19%
4	70	2%	18%
5	79	7%	10%
6	88	6%	-3%
7	90	-4%	-6%
8	77	-12%	-6%
9	76	-20%	8%
10	64	-12%	24%
11	49	-2%	26%
12	76	6%	12%
13	82	14%	3%
14	75	17%	-13%
15	67	4%	-26%
16	76	-7%	-13%



# TLCI 49







**AYRTON**

Digital Lighting