



# HURACÁN WASH TC

PHOTOMETRY



**AYRTON**  
Digital Lighting





<b>Total Flux</b>	27106 lm (@zoom 128, fan mode stage, Goniometer)
-------------------	--

<b>CCT @LED engin</b>	6800 (±400K)
<b>CCT @open</b>	6000 (±500K)
<b>Ra @open</b>	95 (±2)
<b>TLCI</b>	97
<b>TM-30</b>	Rf: 91.0 Rg: 100.1

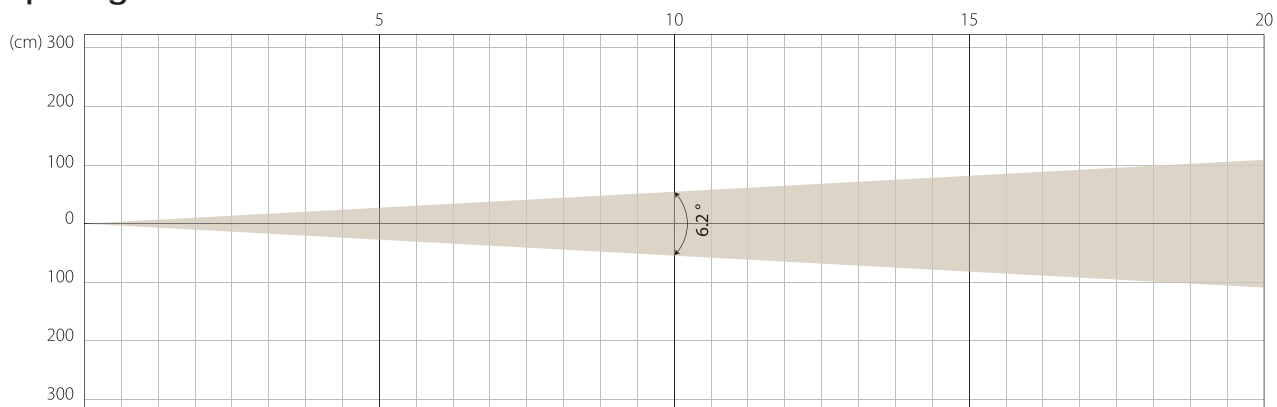
<b>Fan Mode</b>	<b>Noise Level (dBA)</b>	<b>by Goniometer (lm)</b>	<b>by Sphere (lm)</b>
<b>Auto</b>	45,5	26039	32549
<b>Stage</b>	51,2	27106	33883
<b>Silence</b>	38,8	19531	24414
<b>Super Silence</b>	34,1	11697	14621

Note: noise measured @1m distance, static status, ambient 31 dBA.

<b>Voltage / Power</b>	100-240V, 50-60Hz	1600 W
<b>Fixture Dimension / Weight</b>	494 x 789 x 294 mm	42.1 kg
<b>Packing Dimension / Weight</b>	730 x 570 x 710 mm	60.1 kg

MIN ZOOM

### Beam Opening

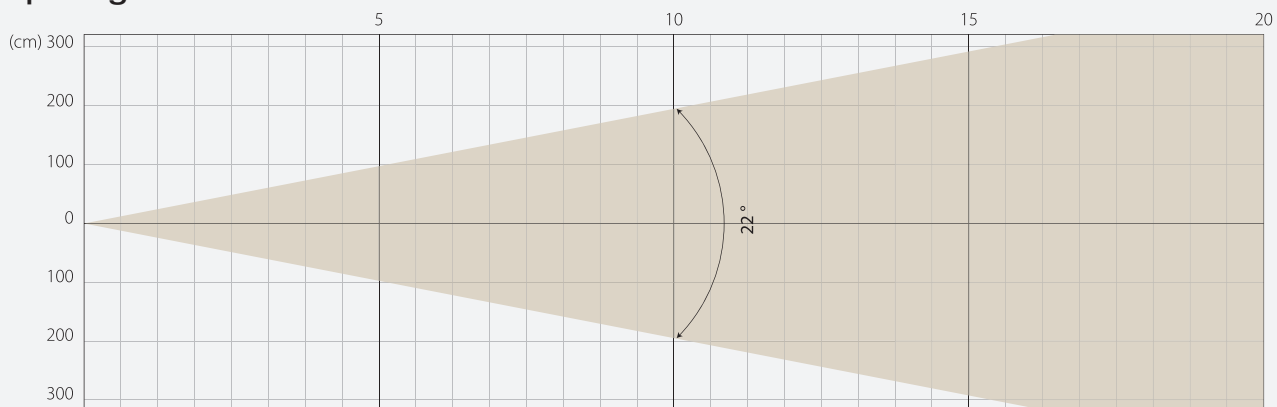


### Intensity

Distance (m)	5		10		15		20	
unit	lux	diameter	lux	diameter	lux	diameter	lux	diameter
White	63440	0,54	15860	1,08	7049	1,62	3965	2,17

MIDDLE ZOOM

### Beam Opening

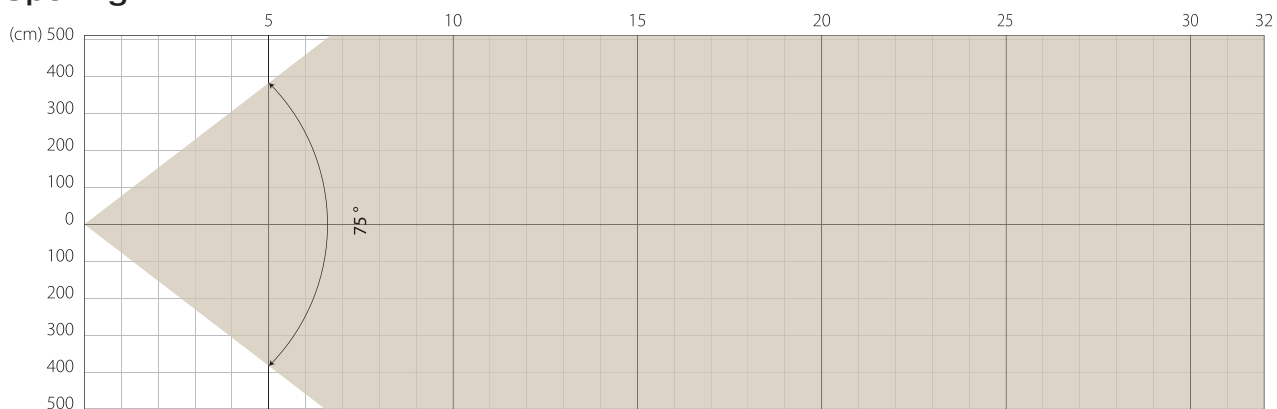


### Intensity

Distance (m)	5		10		15		20	
unit	lux	diameter	lux	diameter	lux	diameter	lux	diameter
White	7979	1,94	1995	3,89	887	5,83	499	7,78

MAX ZOOM

### Beam Opening



### Intensity

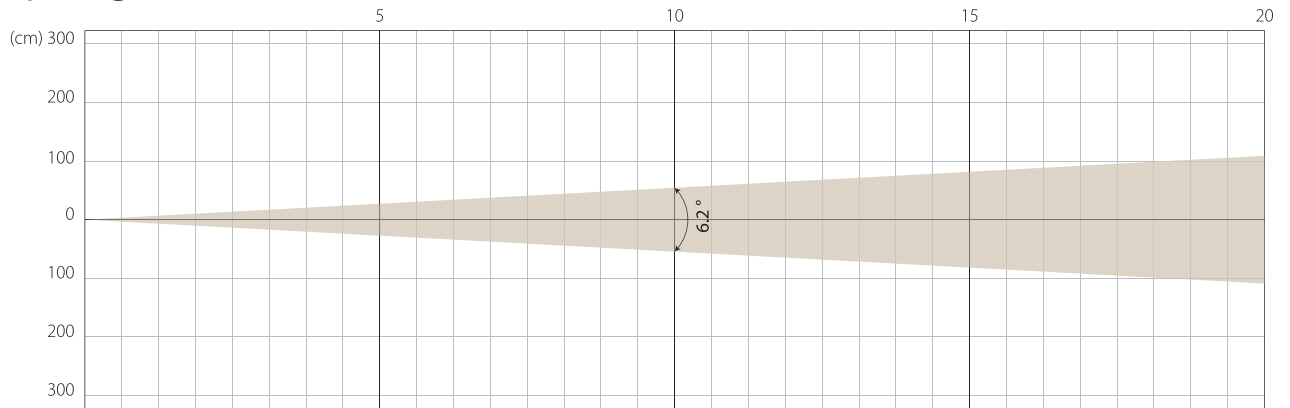
Distance (m)	5		10		15		20	
unit	lux	diameter	lux	diameter	lux	diameter	lux	diameter
White	1235	7,67	309	15,35	137	23,02	77	30,69

# STAGE MODE

NATIVE CRI GREATER THAN 95

MIN ZOOM

## Beam Opening

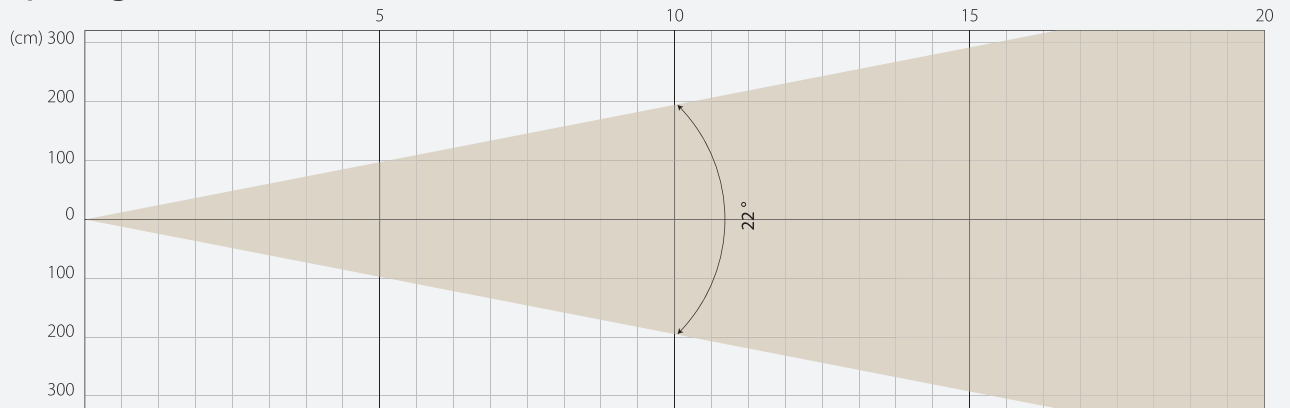


## Intensity

Distance (m)	5		10		15		20	
	lux	diameter	lux	diameter	lux	diameter	lux	diameter
White	66290	0,54	16573	1,08	7366	1,62	4143	2,17

MIDDLE ZOOM

## Beam Opening

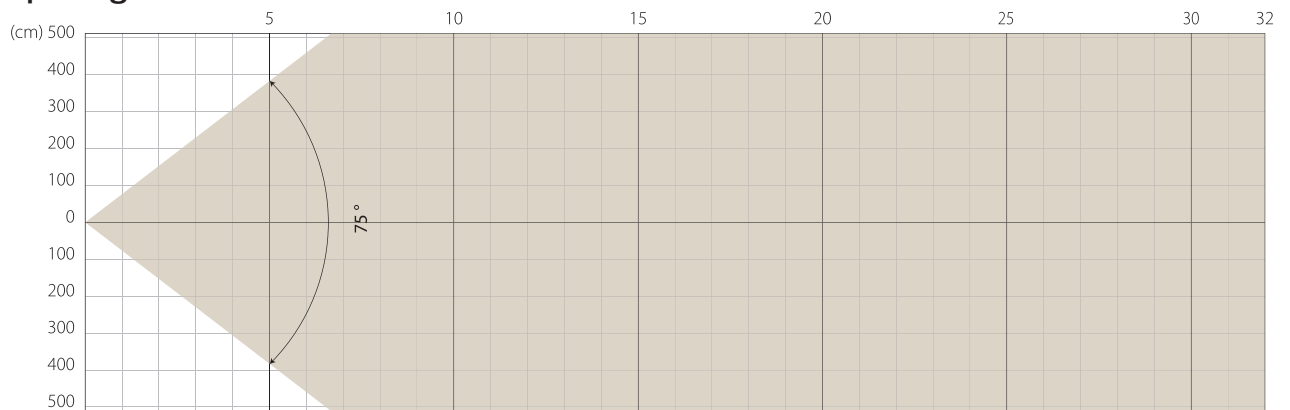


## Intensity

Distance (m)	5		10		15		20	
	lux	diameter	lux	diameter	lux	diameter	lux	diameter
White	8394	1,94	2099	3,89	933	5,83	525	7,78

MAX ZOOM

## Beam Opening



## Intensity

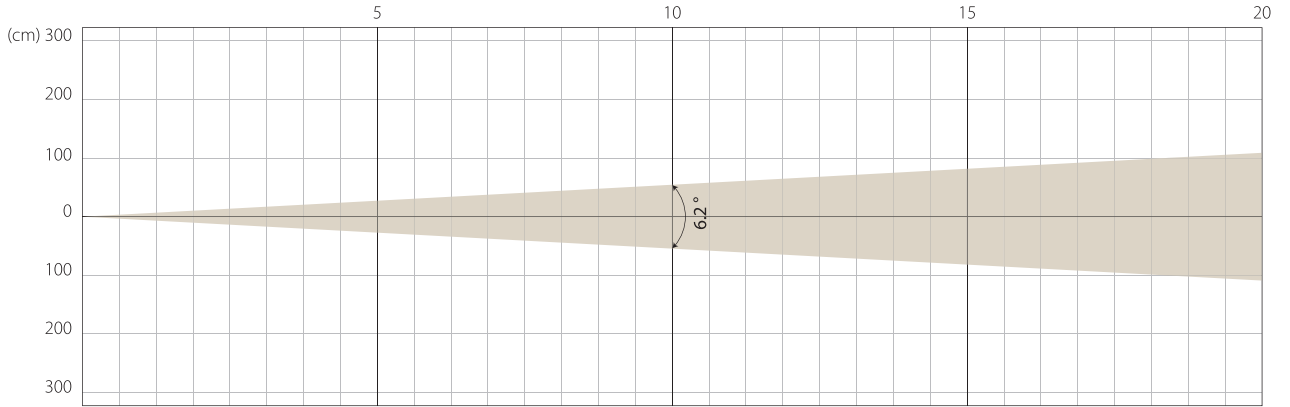
Distance (m)	5		10		15		20	
	lux	diameter	lux	diameter	lux	diameter	lux	diameter
White	1290	7,67	322	15,35	143	23,02	81	30,69

# SILENCE MODE

NATIVE CRI GREATER THAN 95

MIN ZOOM

## Beam Opening

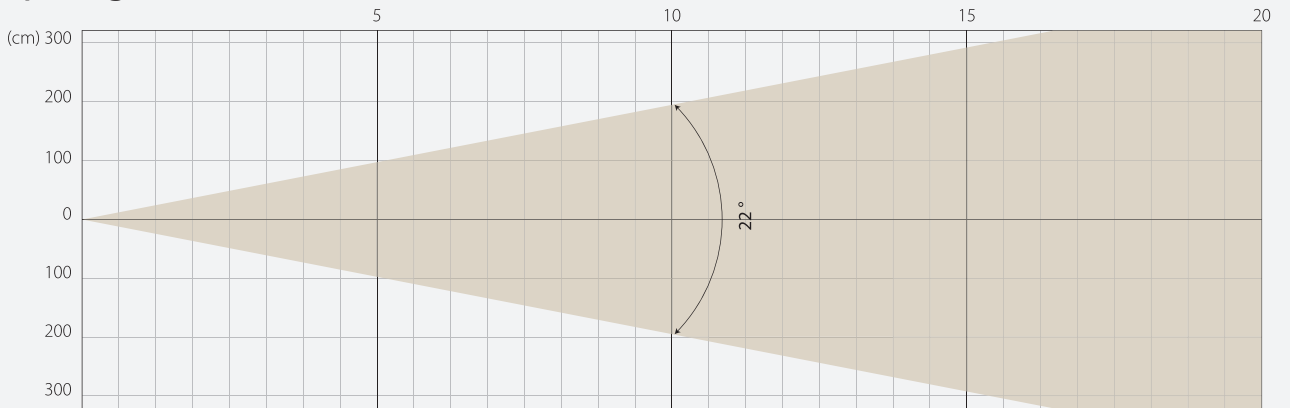


## Intensity

Distance (m)	5		10		15		20	
unit	lux	diameter	lux	diameter	lux	diameter	lux	diameter
White	47613	0,54	11903	1,08	5290	1,62	2976	2,17

MIDDLE ZOOM

## Beam Opening

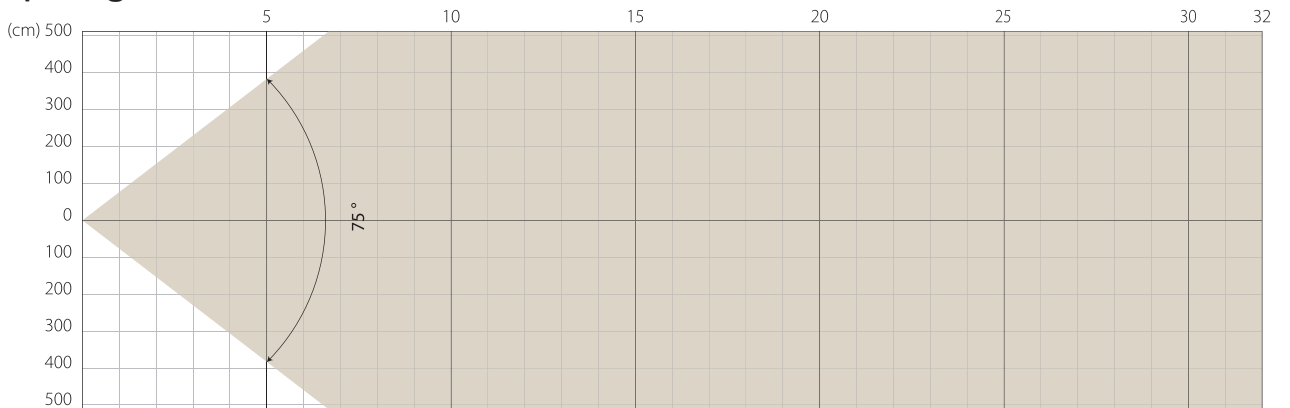


## Intensity

Distance (m)	5		10		15		20	
unit	lux	diameter	lux	diameter	lux	diameter	lux	diameter
White	5963	1,94	1491	3,89	663	5,83	373	7,78

MAX ZOOM

## Beam Opening



## Intensity

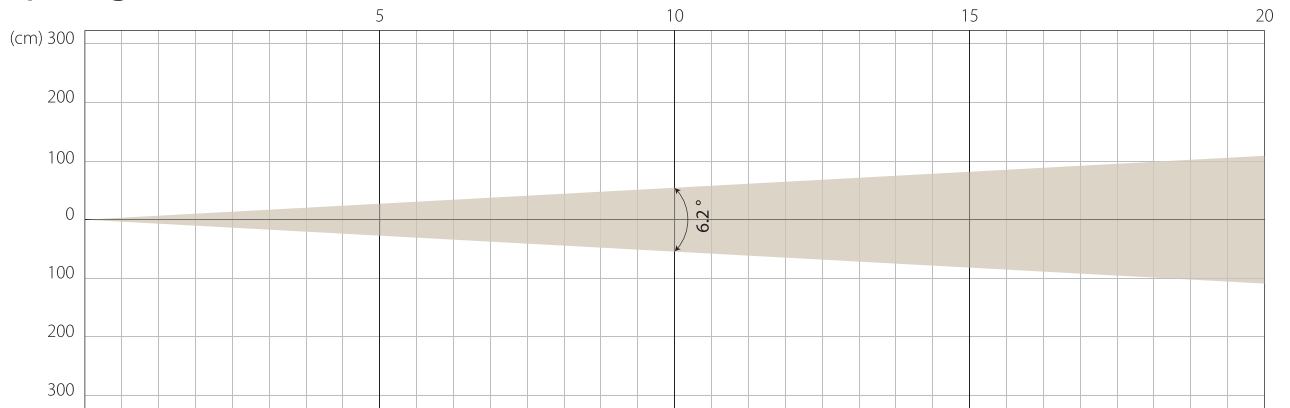
Distance (m)	5		10		15		20	
unit	lux	diameter	lux	diameter	lux	diameter	lux	diameter
White	909	7,67	227	15,35	101	23,02	57	30,69

# SUPER SILENCE MODE

NATIVE CRI GREATER THAN 95

MIN ZOOM

## Beam Opening

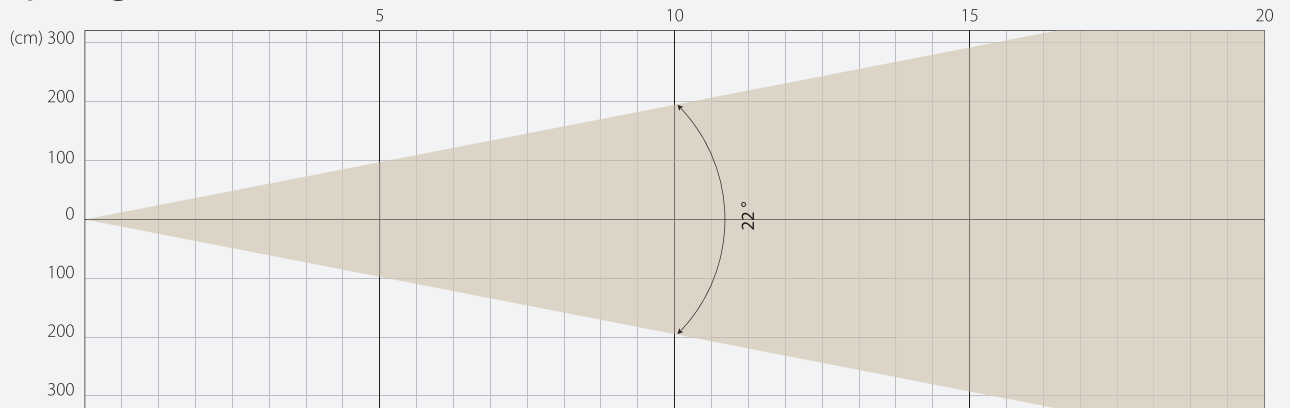


## Intensity

Distance (m)	5		10		15		20	
	lux	diameter	lux	diameter	lux	diameter	lux	diameter
White	28917	0,54	7229	1,08	3213	1,62	1807	2,17

MIDDLE ZOOM

## Beam Opening

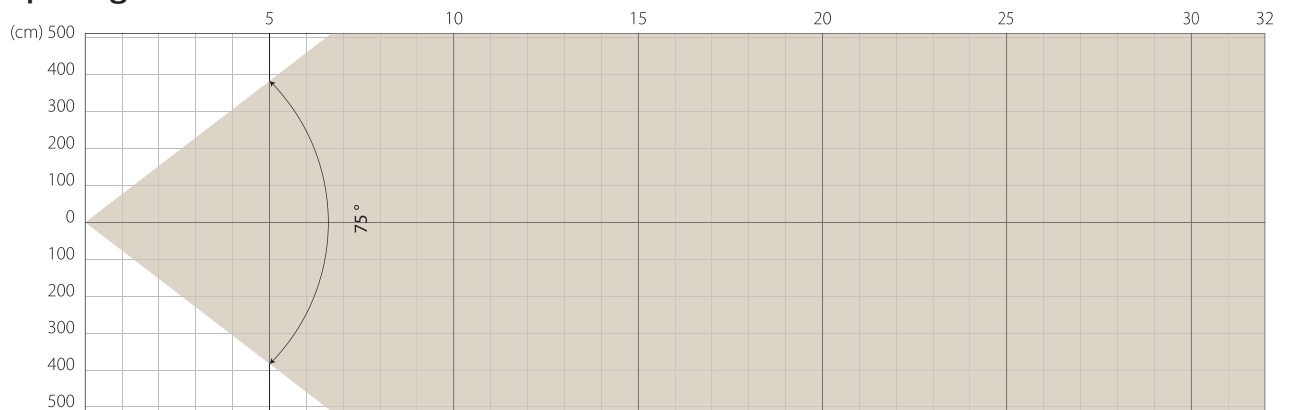


## Intensity

Distance (m)	5		10		15		20	
	lux	diameter	lux	diameter	lux	diameter	lux	diameter
White	3566	1,94	891	3,89	396	5,83	223	7,78

MAX ZOOM

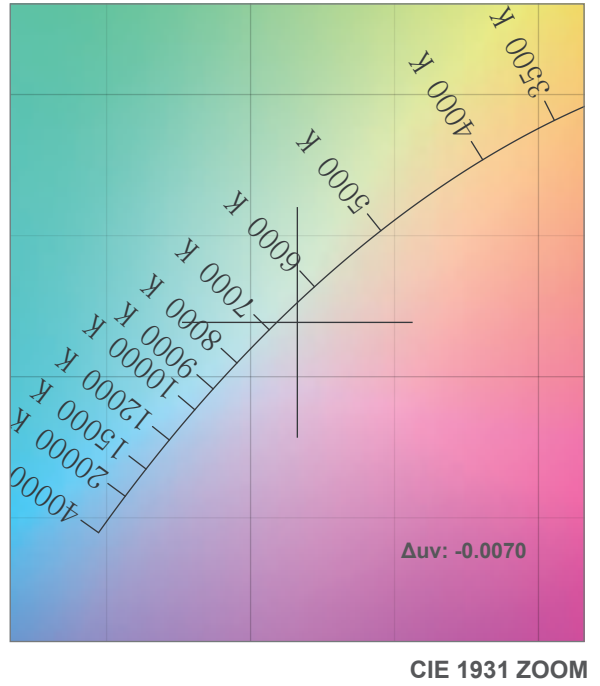
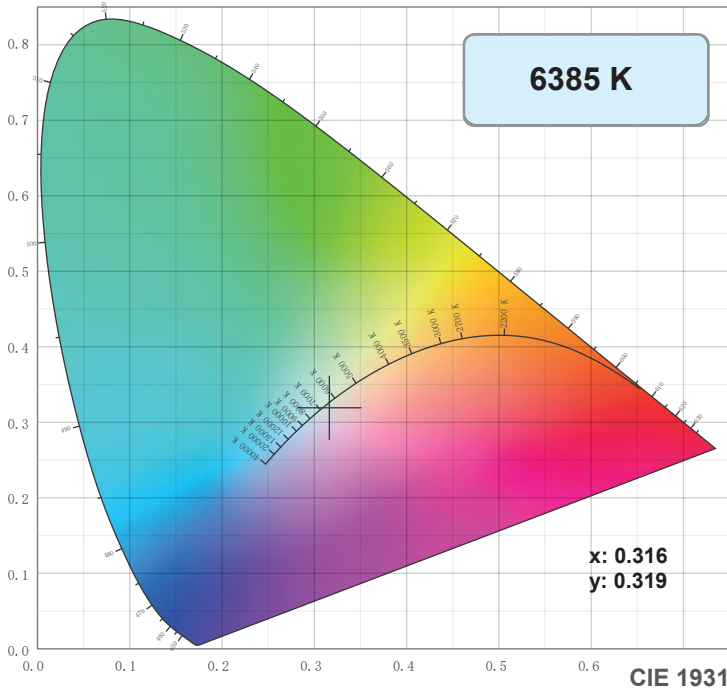
## Beam Opening



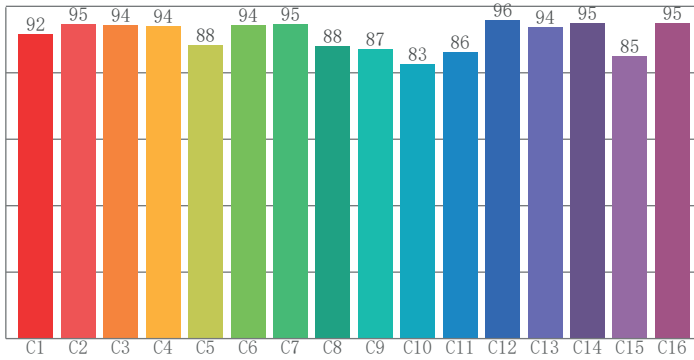
## Intensity

Distance (m)	5		10		15		20	
	lux	diameter	lux	diameter	lux	diameter	lux	diameter
White	554	7,67	138	15,35	62	23,02	35	30,69

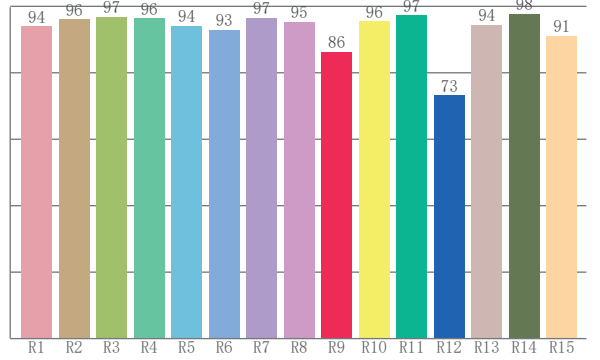
# COLOR DETAILS



**TM-30: 91.0**



**CRI: 95.3 (R1-R8)**



**CRI R values, only R1-R8 are used to calculate final CRI value**

R1	R2	R3	R4	R5	R6	R7	R8	R9	R10	R11	R12	R13	R14	R15
93.9	96.1	96.8	96.4	94.1	92.9	96.6	95.3	86.3	95.5	97.2	73.3	94.5	97.6	91.2

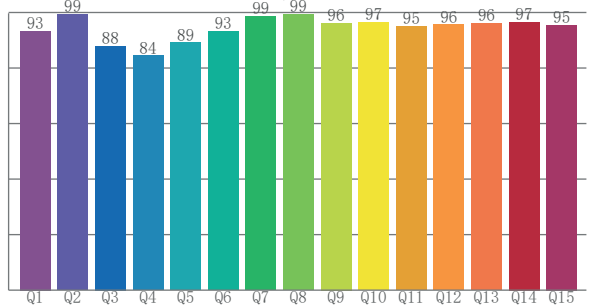
**TM30 C values, 16 binned values out of total of 99 C values**

C1	C2	C3	C4	C5	C6	C7	C8	C9	C10	C11	C12	C13	C14	C15	C16
91.7	94.7	94.5	94.0	88.5	94.3	94.8	88.0	87.2	82.7	86.3	95.9	93.8	95.0	85.1	94.9

**CQS Q values**

Q1	Q2	Q3	Q4	Q5	Q6	Q7	Q8	Q9	Q10	Q11	Q12	Q13	Q14	Q15
93.3	99.4	87.9	84.4	89.1	93.2	98.5	99.3	96.2	96.5	95.0	95.6	96.1	96.5	95.5

**CQS: 93.1**



## Color parameters

Color temperature	Color rendering index	Red component	Color fidelity	Color gamut	Color quality scale	Color coordinate cie 1931	Color coordinate cie 1931	Color coordinate	Color coordinate	Color deviation from black body
CCT	CRI	CRI R9	TM30 Rf	TM30 Rg	CQS	x	y	u	v	Δuv
6385 K	95.3	86.3	91.0	100.1	93.1	0.316	0.319	0.204	0.309	-0.0070

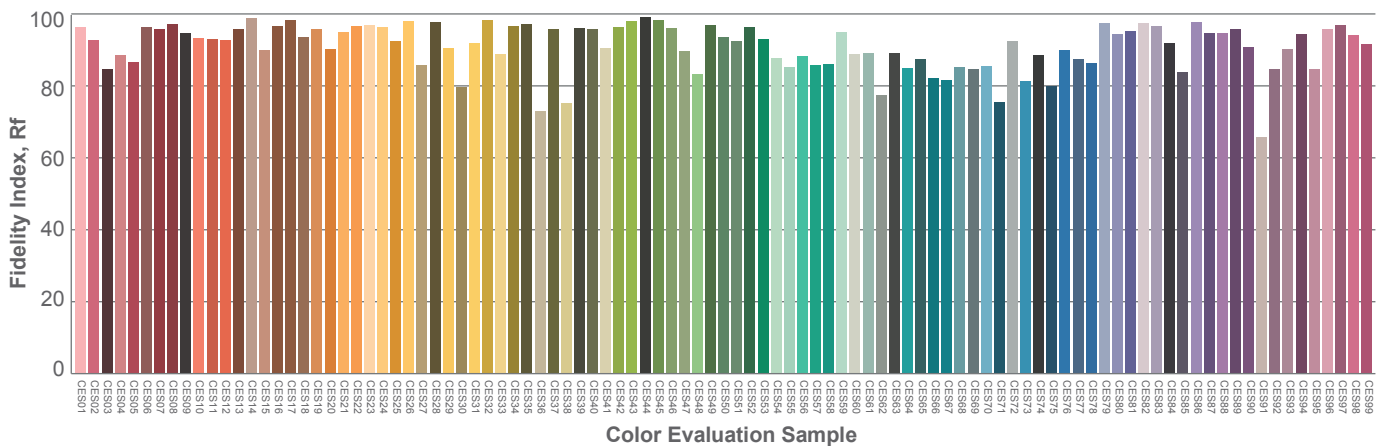
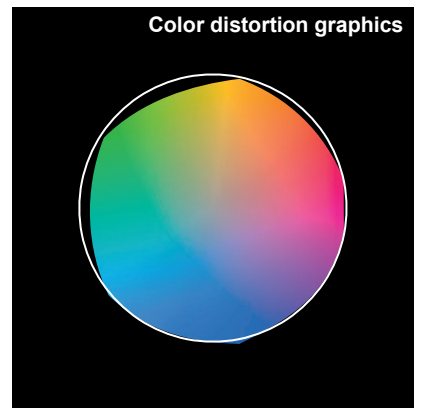
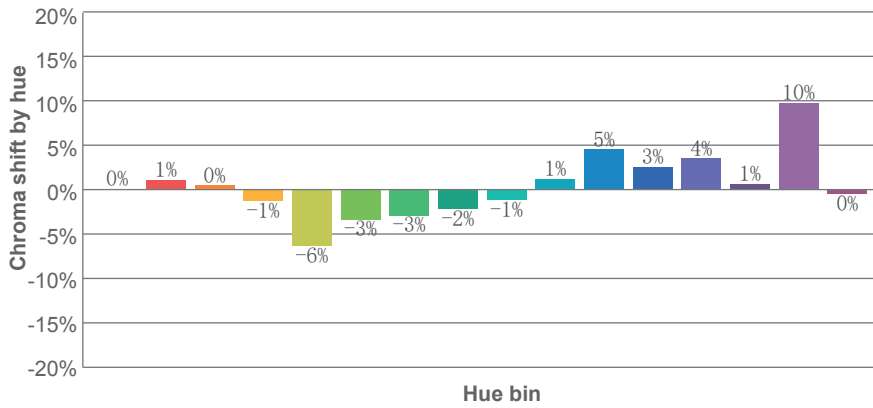
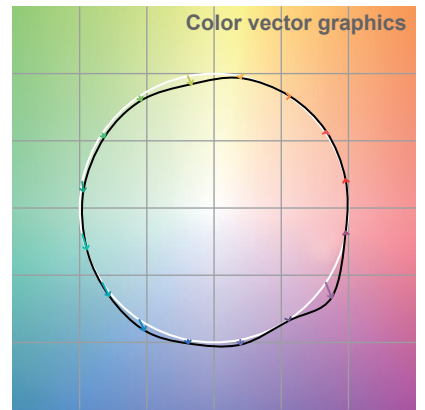
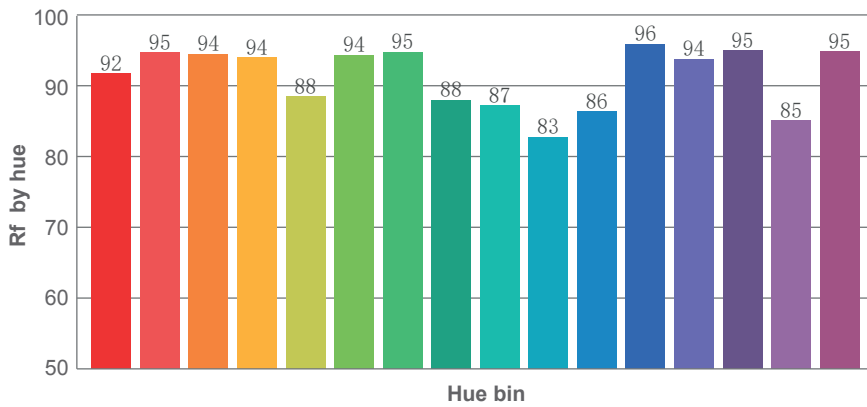
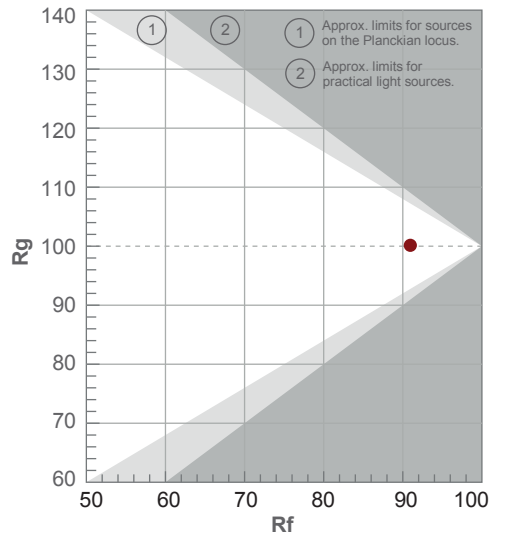


# TM-30 DETAILS

**Rf 91.0**  
Fidelity index Rf

**Rg 100.1**  
Gamut index Rg

Hue Bin	R <sub>f</sub>	Shifts (%)	
		Chroma	Hue
1	92	0%	2%
2	95	1%	1%
3	94	0%	-1%
4	94	-1%	-1%
5	88	-6%	-1%
6	94	-3%	1%
7	95	-3%	2%
8	88	-2%	7%
9	87	-1%	12%
10	83	1%	11%
11	86	5%	8%
12	96	3%	1%
13	94	4%	0%
14	95	1%	0%
15	85	10%	-7%
16	95	0%	2%



# TLCI 97







**AYRTON**

Digital Lighting