



HURACÁN PROFILE S

PHOTOMETRY



AYRTON
Digital Lighting



Total Flux	51364 lm (@zoom 106, integrating sphere measurement, Fan mode auto)
-------------------	---

CCT @LED engin	8000 (±500K)
CCT @open	7000 (±500K)
Ra @open	70 (±2)
TLCI	47
TM-30	Rf: 72.6 Rg: 92.1

Fan Mode	Noise Level (dBA)	by Goniometer (lm)	by Sphere (lm)
Auto	47,3	38306	49307
Stage	49,4	39217	51364
Silence	42	30927	39542
Super Silence	40,5	29293	37204

Note: noise measured @1m distance, static status, ambient 31 dBA.

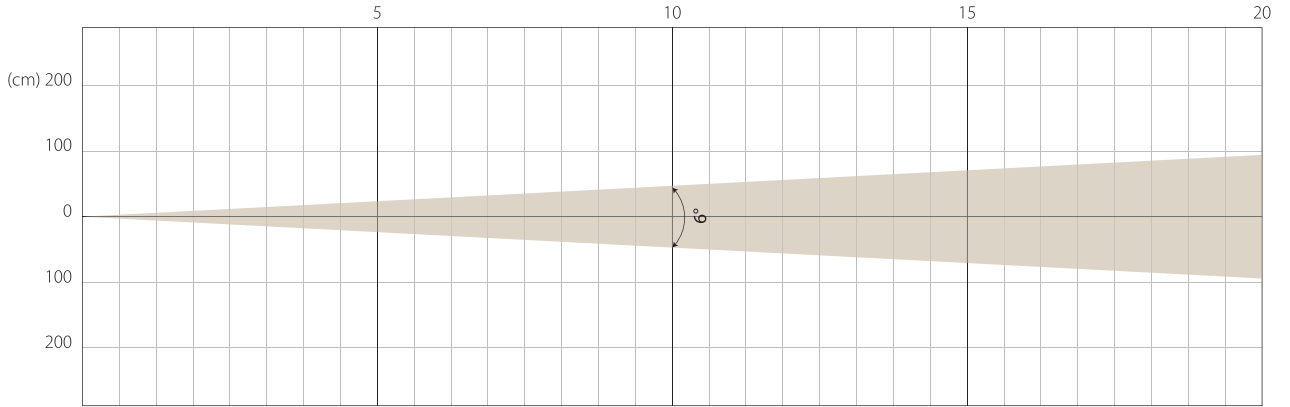
Voltage / Power	100-240V, 50-60Hz	1,470 W
Fixture Dimension / Weight	486 x 811 x 294 mm	46 kg
Packing Dimension / Weight	720 x 560 x 715 mm	64 kg

AUTO MODE

NATIVE CRI GREATER THAN 70

MIN ZOOM

Beam Opening

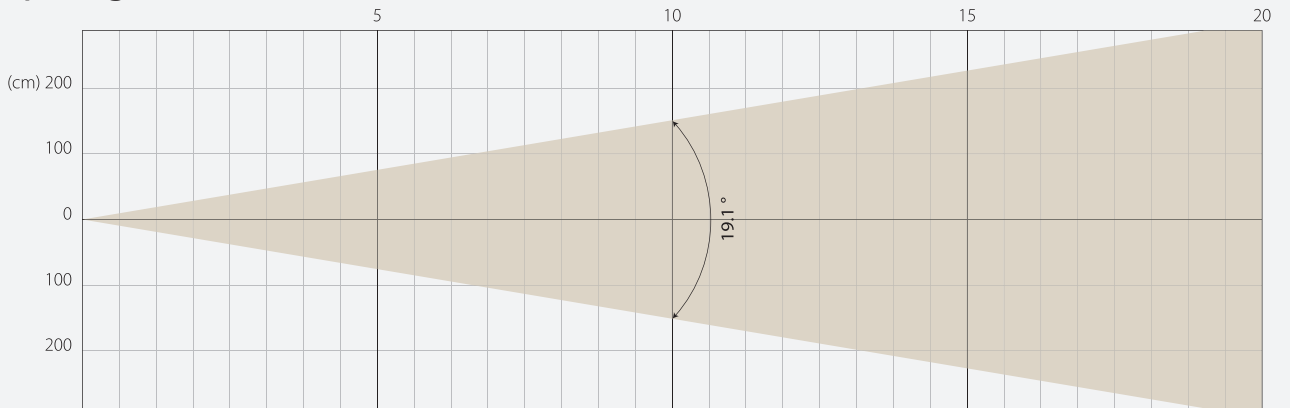


Intensity

Distance (m)	5		10		15		20	
unit	lux	diameter	lux	diameter	lux	diameter	lux	diameter
White	93059	0,52	23265	1,05	10340	1,57	5816	2,1

MIDDLE ZOOM

Beam Opening

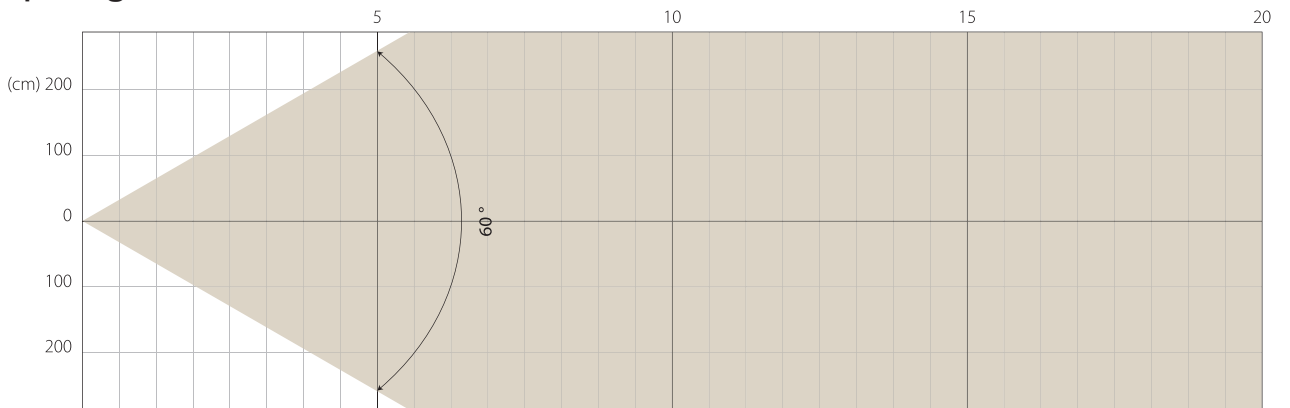


Intensity

Distance (m)	5		10		15		20	
unit	lux	diameter	lux	diameter	lux	diameter	lux	diameter
White	17377	1,68	4344	3,36	1931	5,05	1086	6,73

MAX ZOOM

Beam Opening



Intensity

Distance (m)	5		10		15		20	
unit	lux	diameter	lux	diameter	lux	diameter	lux	diameter
White	2212	5,77	553	11,55	246	17,32	138	23,09

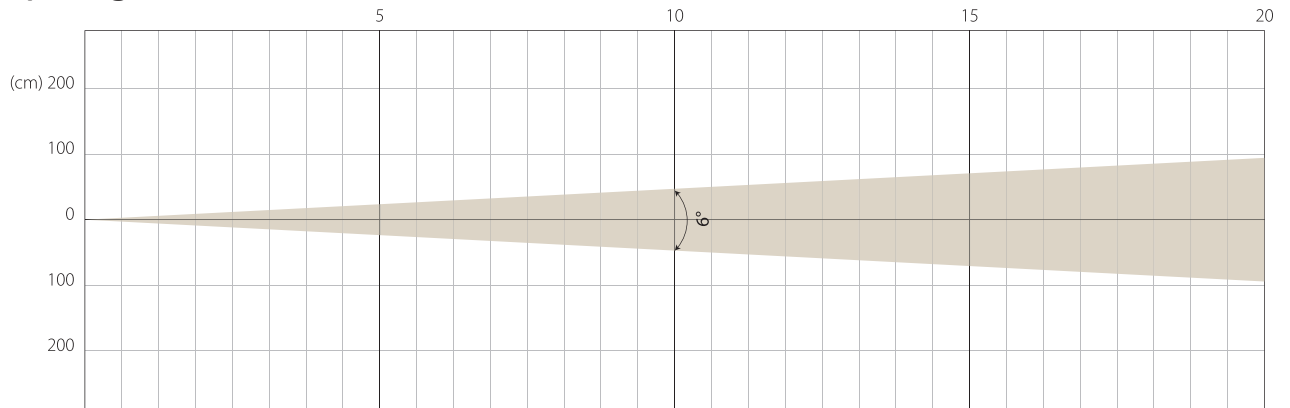
Note: Measurement done with Goniometer

STAGE MODE

NATIVE CRI GREATER THAN 70

MIN ZOOM

Beam Opening

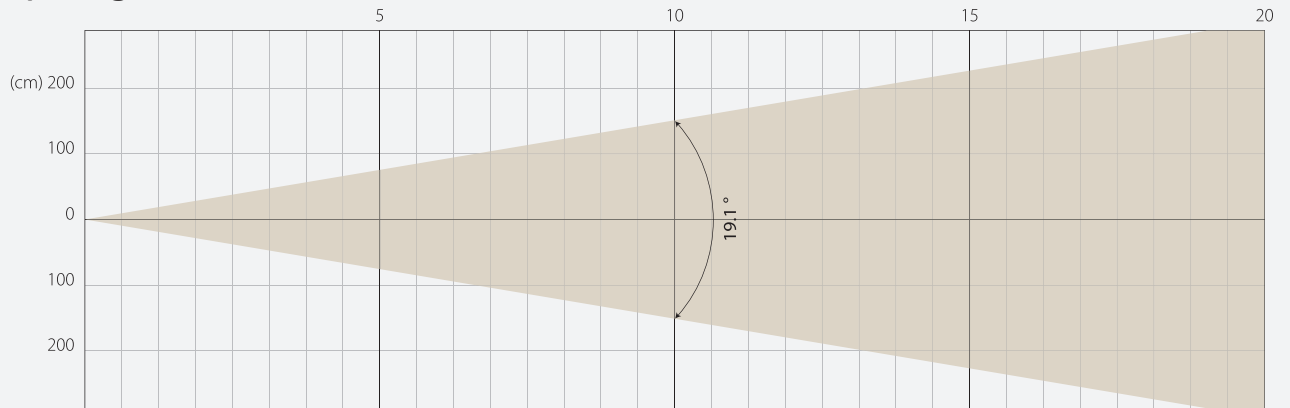


Intensity

Distance (m)	5		10		15		20	
unit	lux	diameter	lux	diameter	lux	diameter	lux	diameter
White	100138	0,52	25035	1,05	11126	1,57	6259	2,1

MIDDLE ZOOM

Beam Opening

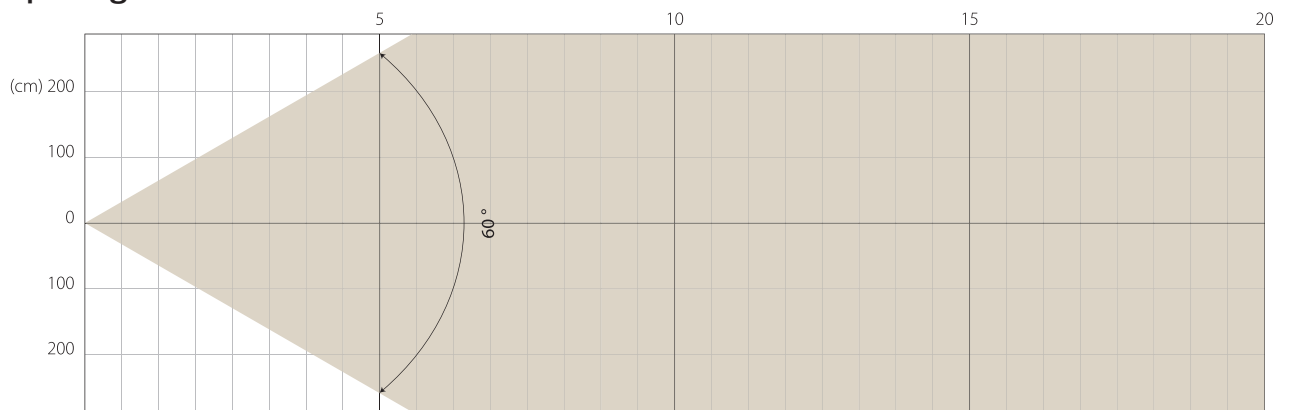


Intensity

Distance (m)	5		10		15		20	
unit	lux	diameter	lux	diameter	lux	diameter	lux	diameter
White	18720	1,68	4680	3,36	2080	5,05	1170	6,73

MAX ZOOM

Beam Opening



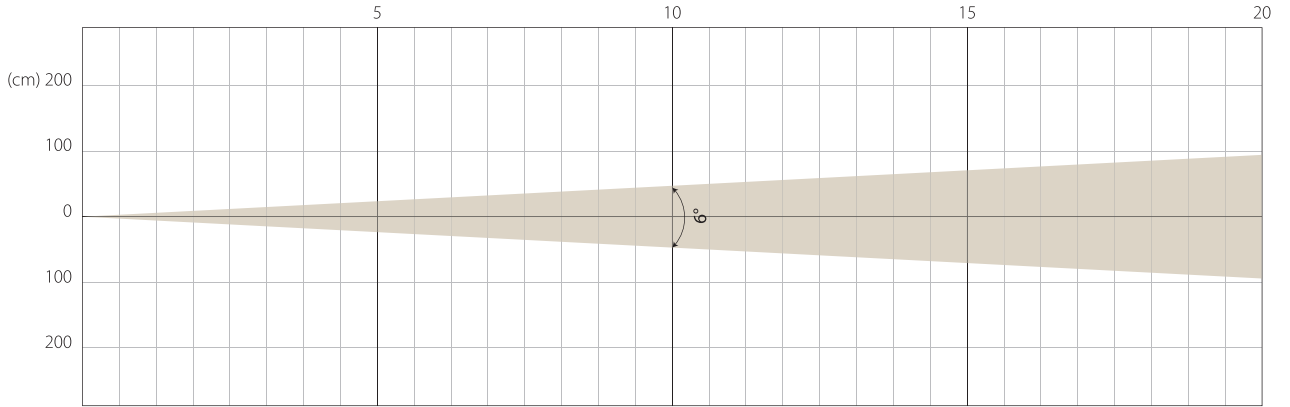
Intensity

Distance (m)	5		10		15		20	
unit	lux	diameter	lux	diameter	lux	diameter	lux	diameter
White	2375	5,77	594	11,55	264	17,32	148	23,09

Note: Measurement done with Goniometer

MIN ZOOM

Beam Opening

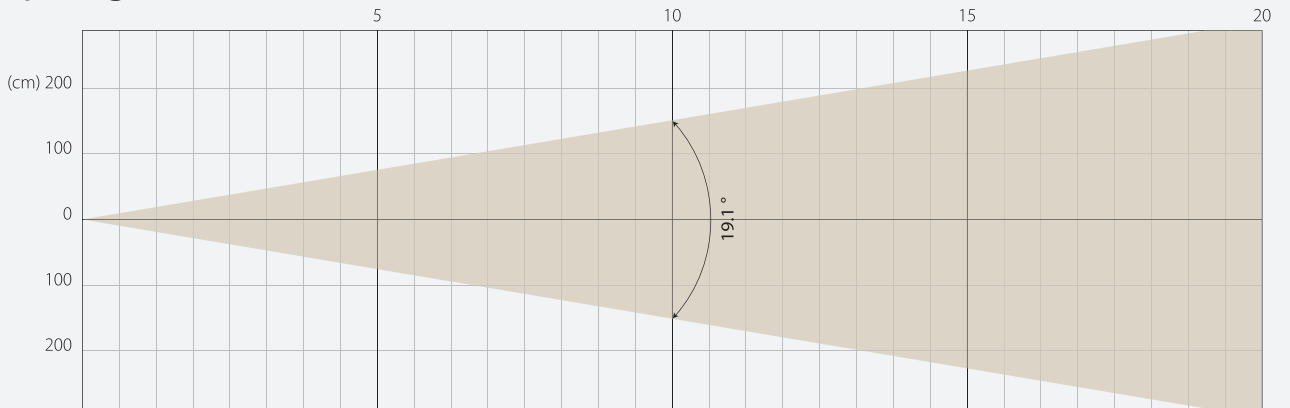


Intensity

Distance (m)	5		10		15		20	
unit	lux	diameter	lux	diameter	lux	diameter	lux	diameter
White	74818	0,52	18705	1,05	8313	1,57	4676	2,1

MIDDLE ZOOM

Beam Opening

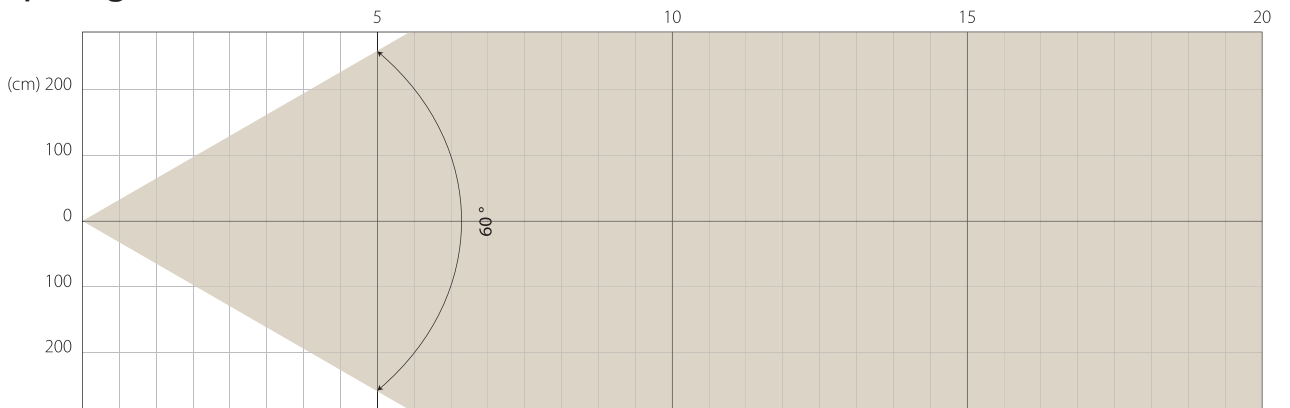


Intensity

Distance (m)	5		10		15		20	
unit	lux	diameter	lux	diameter	lux	diameter	lux	diameter
White	13946	1,68	3486	3,36	1550	5,05	872	6,73

MAX ZOOM

Beam Opening



Intensity

Distance (m)	5		10		15		20	
unit	lux	diameter	lux	diameter	lux	diameter	lux	diameter
White	1766	5,77	442	11,55	196	17,32	110	23,09

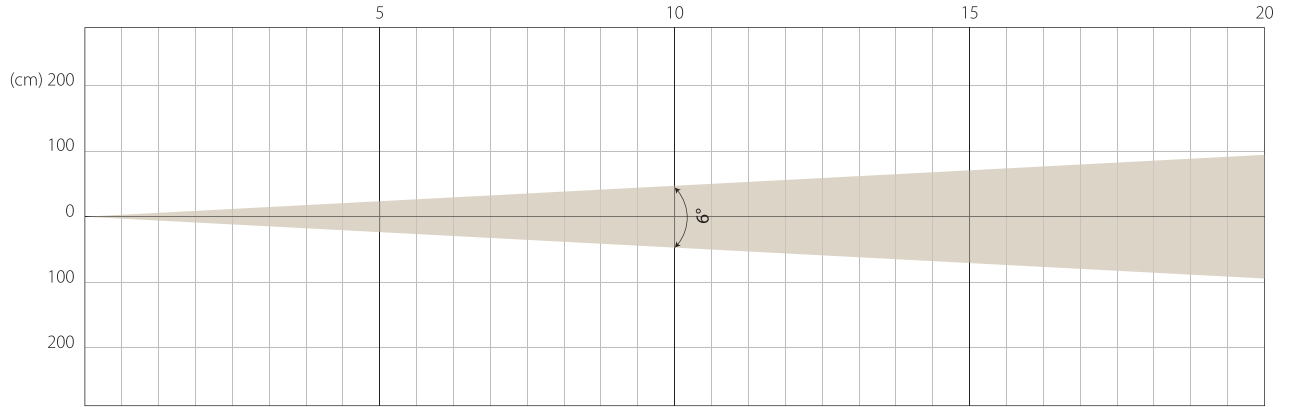
Note: Measurement done with Goniometer

SUPER SILENCE MODE

NATIVE CRI GREATER THAN 70

MIN ZOOM

Beam Opening

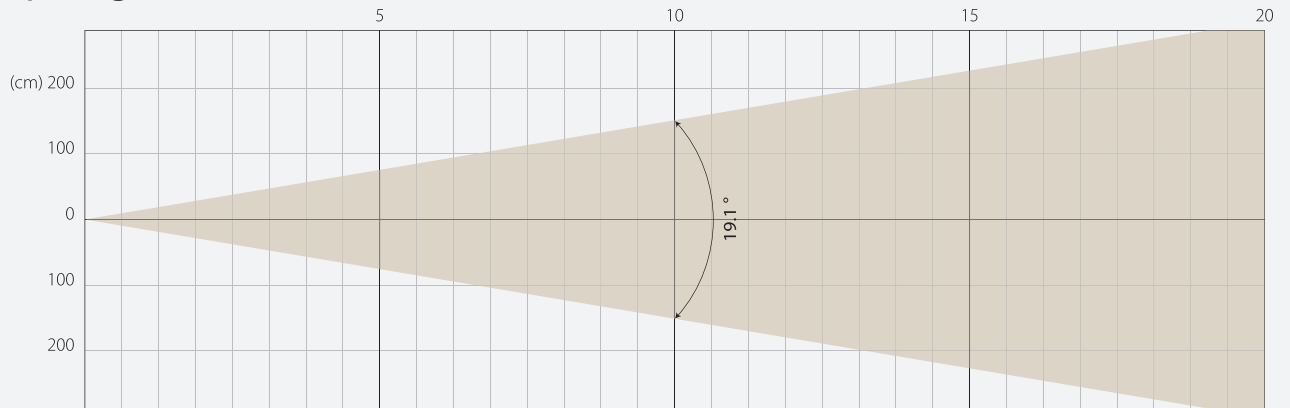


Intensity

Distance (m)	5		10		15		20	
unit	lux	diameter	lux	diameter	lux	diameter	lux	diameter
White	70249	0,52	17562	1,05	7805	1,57	4391	2,1

MIDDLE ZOOM

Beam Opening

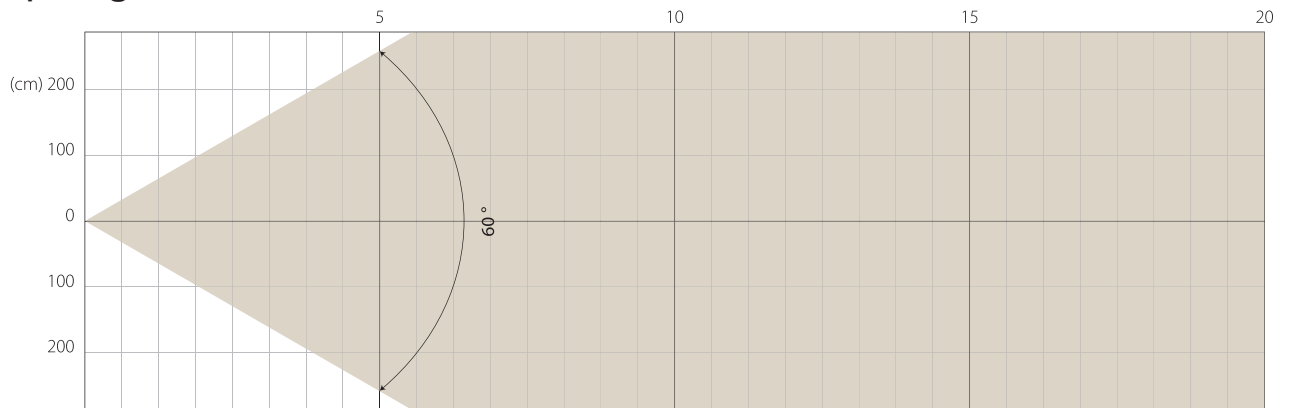


Intensity

Distance (m)	5		10		15		20	
unit	lux	diameter	lux	diameter	lux	diameter	lux	diameter
White	13131	1,68	3283	3,36	1459	5,05	821	6,73

MAX ZOOM

Beam Opening

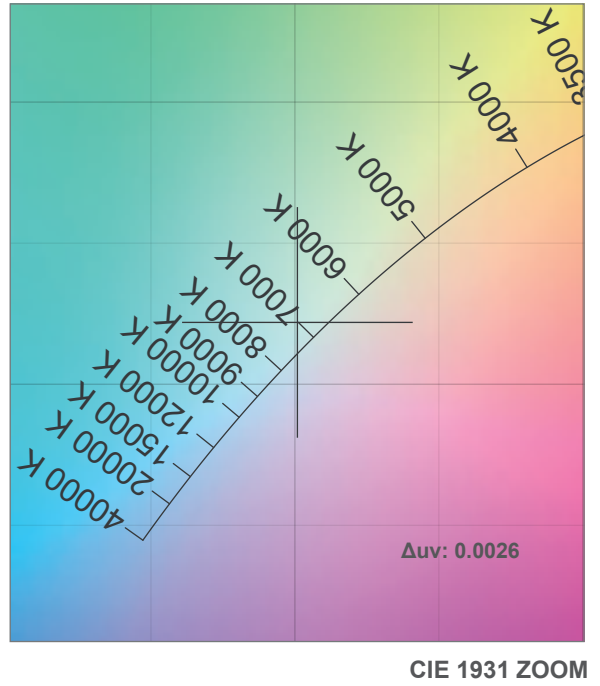
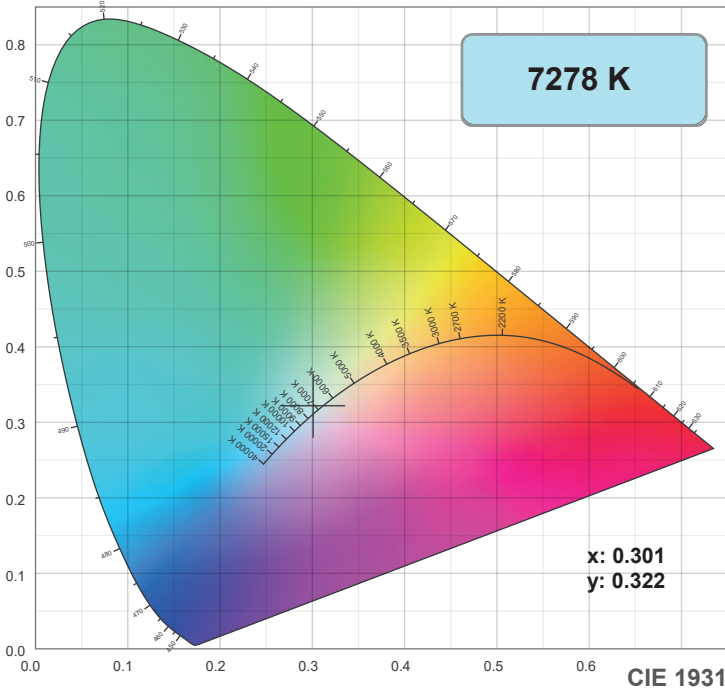


Intensity

Distance (m)	5		10		15		20	
unit	lux	diameter	lux	diameter	lux	diameter	lux	diameter
White	1661	5,77	415	11,55	185	17,32	104	23,09

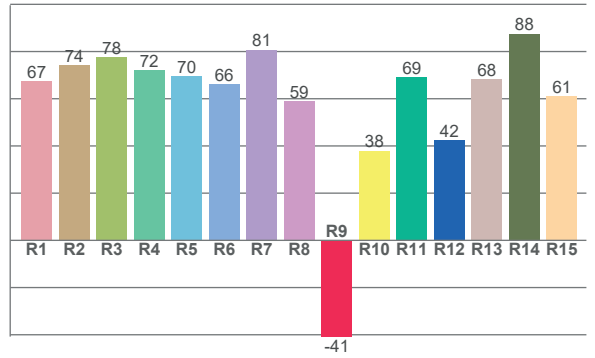
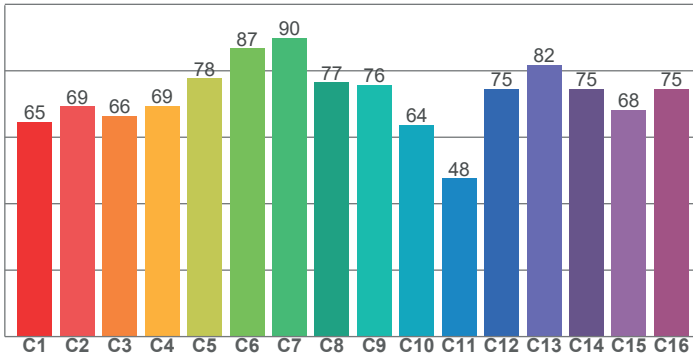
Note: Measurement done with Goniometer

COLOR DETAILS



TM-30: 72.6

CRI: 70.9 (R1-R8)



CRI R values, only R1-R8 are used to calculate final CRI value

R1	R2	R3	R4	R5	R6	R7	R8	R9	R10	R11	R12	R13	R14	R15
67.5	74.2	77.7	72.0	69.7	66.0	80.7	59.1	-40.8	38.0	69.2	42.5	68.4	87.6	61.1

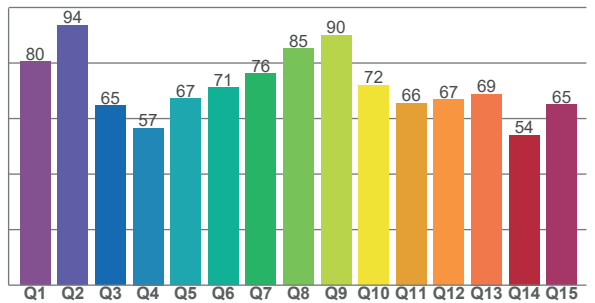
TM30 C values, 16 binned values out of total of 99 C values

C1	C2	C3	C4	C5	C6	C7	C8	C9	C10	C11	C12	C13	C14	C15	C16
64.5	69.2	66.4	69.5	77.7	86.7	89.8	76.5	75.8	63.7	47.7	74.6	81.7	74.6	68.3	74.6

CQS Q values

Q1	Q2	Q3	Q4	Q5	Q6	Q7	Q8	Q9	Q10	Q11	Q12	Q13	Q14	Q15
80.4	93.6	64.7	56.6	67.1	71.1	76.1	85.1	90.0	72.0	65.6	66.7	68.9	54.1	65.0

CQS: 69.7



Color parameters

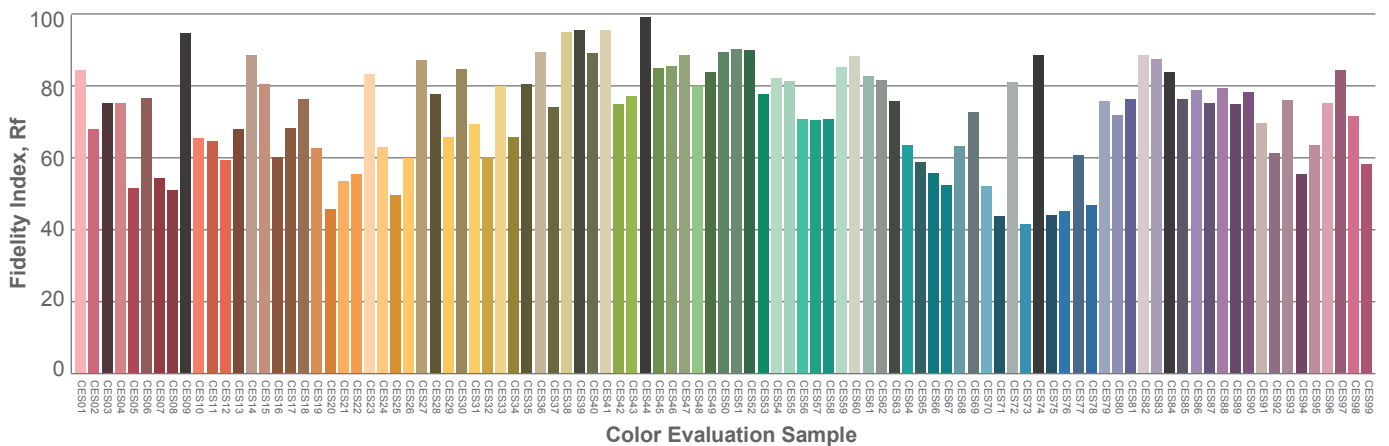
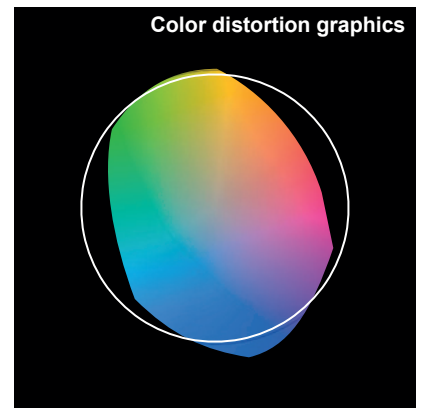
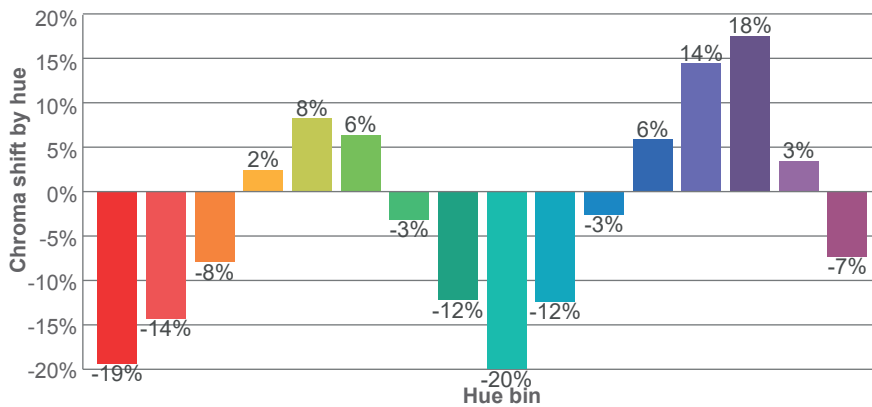
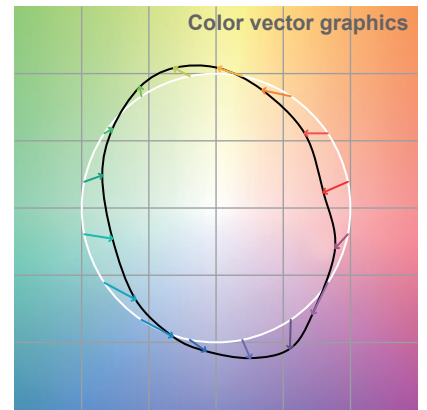
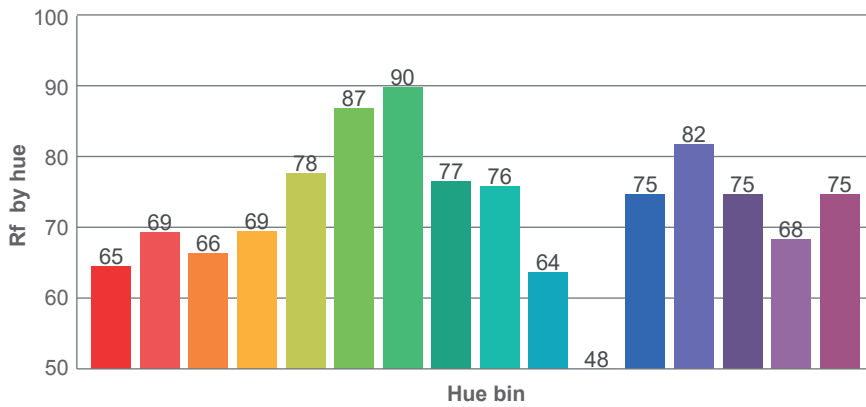
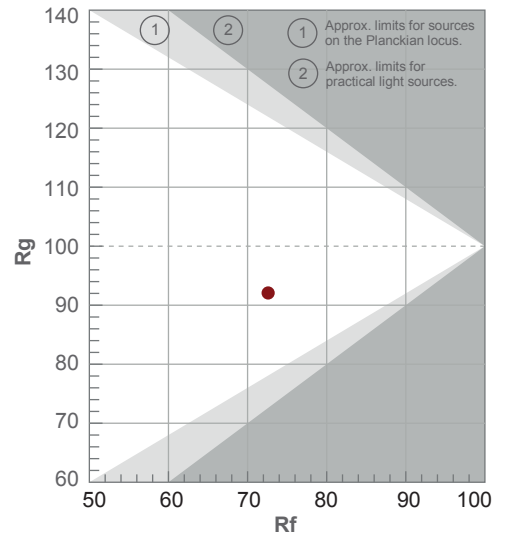
Color temperature	Color rendering index	Red component	Color fidelity	Color gamut	Color quality scale	Color coordinate cie 1931	Color coordinate cie 1931	Color coordinate	Color coordinate	Color deviation from black body
CCT	CRI	CRI R9	TM30 Rf	TM30 Rg	CQS	x	y	u	v	Δuv
7278 K	70.9	-40.8	72.6	92.1	69.7	0.301	0.322	0.192	0.308	0.0026

TM-30 DETAILS

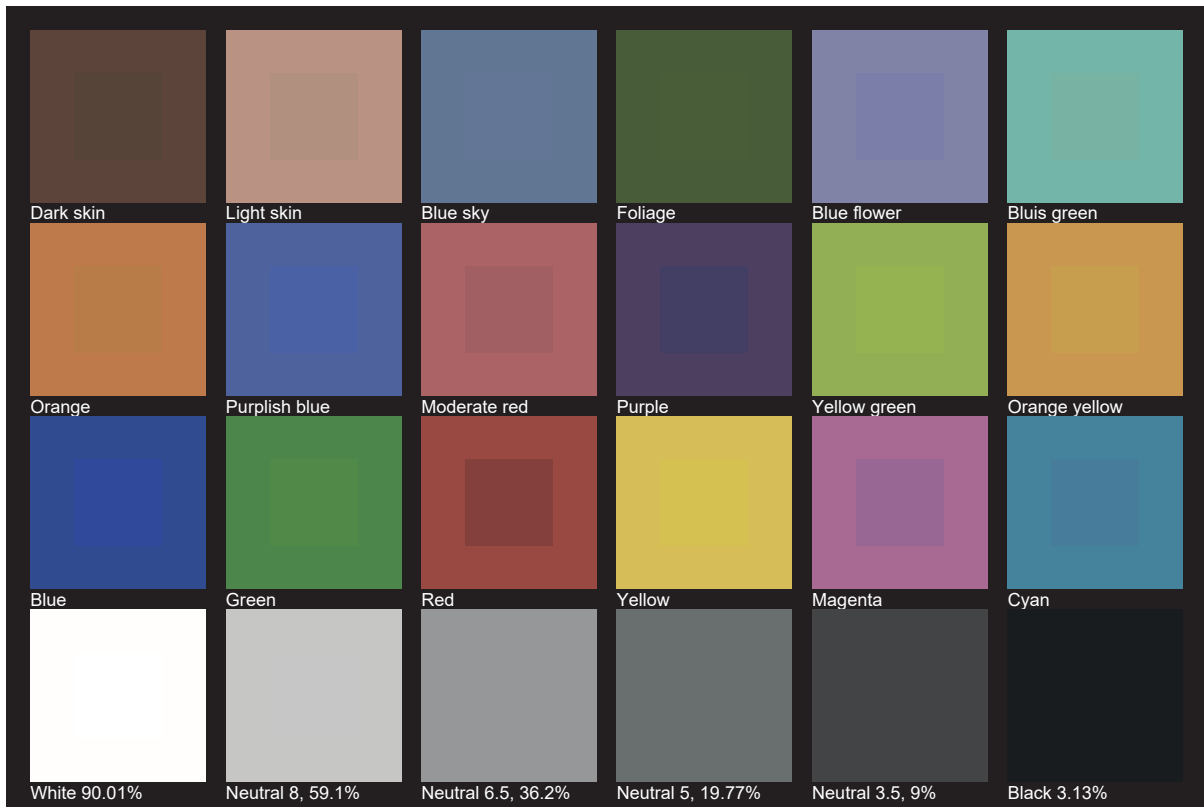
Rf 72.6
Fidelity index Rf

Rg 92.1
Gamut index Rg

Hue Bin	R _f	Shifts (%)	
		Chroma	Hue
1	65	-19%	-4%
2	69	-14%	10%
3	66	-8%	20%
4	69	2%	19%
5	78	8%	10%
6	87	6%	-3%
7	90	-3%	-6%
8	77	-12%	-7%
9	76	-20%	7%
10	64	-12%	23%
11	48	-3%	26%
12	75	6%	13%
13	82	14%	3%
14	75	18%	-12%
15	68	3%	-26%
16	75	-7%	-12%



TLCI 48





AYRTON

Digital Lighting