



# HURACÁN LT

PHOTOMETRY



**AYRTON**  
Digital Lighting





<b>Total Flux</b>	51097 lm (@zoom 128, integrating sphere measurement, Fan mode auto)
-------------------	---

<b>CCT @LED engin</b>	8200 (±500K)
<b>CCT @open</b>	6700 (±500K)
<b>Ra @open</b>	70 (±2)
<b>TLCI</b>	48
<b>TM-30</b>	Rf: 72.6 Rg: 92.1

<b>Fan Mode</b>	<b>Noise Level (dBA)</b>	<b>by Goniometer (lm)</b>	<b>by Sphere (lm)</b>
<b>Auto</b>	46.2	39,813	50,351
<b>Stage</b>	58.2	41,740	51,097
<b>Silence</b>	38.9	27,870	34,860
<b>Super Silence</b>	35.8	20,851	26,098

Note: noise measured @1m distance, static status, ambient 31 dBA.

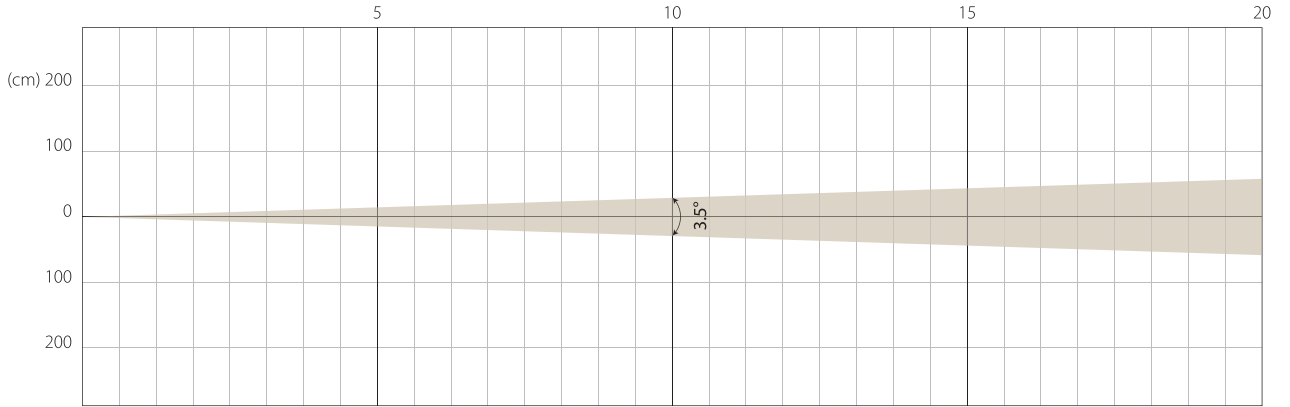
<b>Voltage / Power</b>	100-240V, 50-60Hz	1,470 W
<b>Fixture Dimension / Weight</b>	494 x 867x 280 mm	53.8 kg
<b>Packing Dimension / Weight</b>	768 x 790 x 560 mm	72.8 kg

# AUTO MODE

NATIVE CRI GREATER THAN 70

MIN ZOOM

## Beam Opening

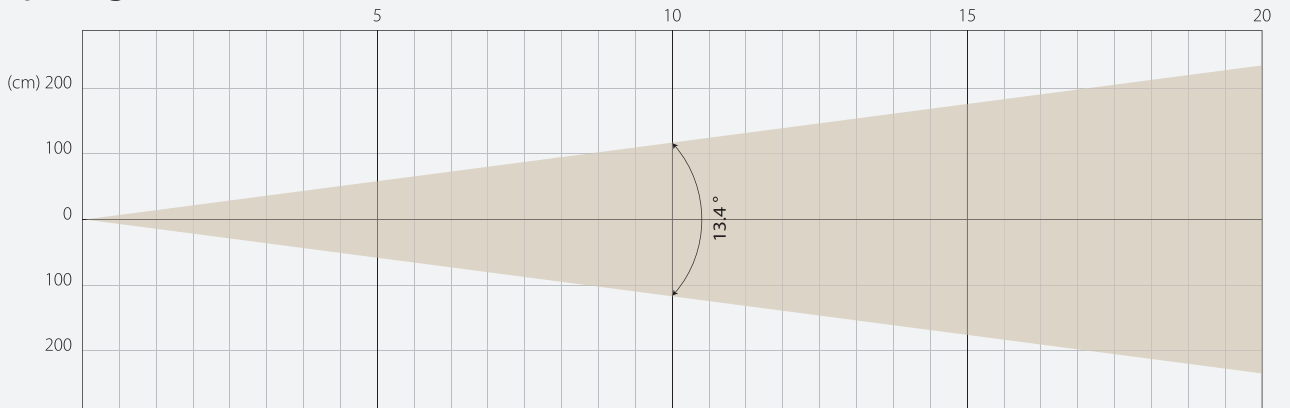


## Intensity

Distance (m)	5		10		15		20	
unit	lux	diameter	lux	diameter	lux	diameter	lux	diameter
White	191560	0.31	47890	0.61	21284	0.92	11973	1.22

MIDDLE ZOOM

## Beam Opening

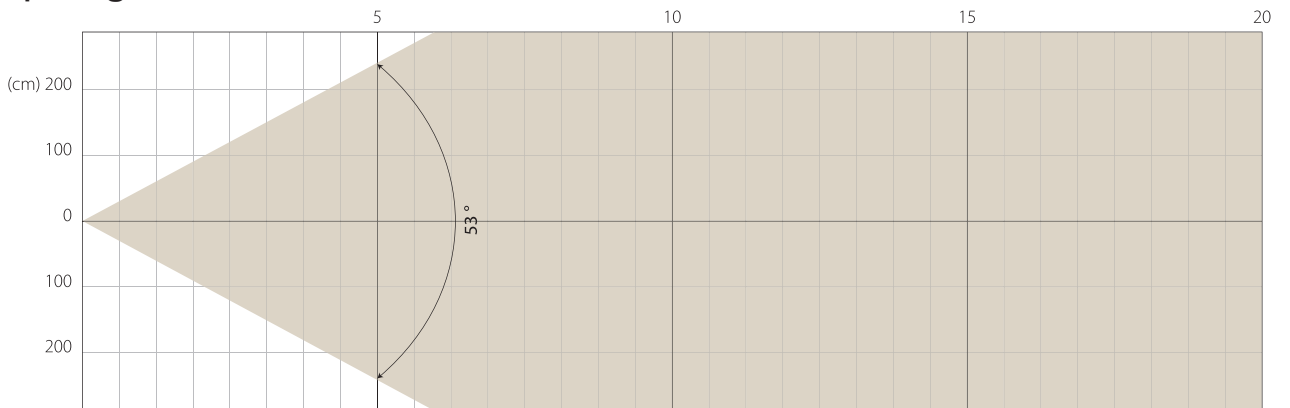


## Intensity

Distance (m)	5		10		15		20	
unit	lux	diameter	lux	diameter	lux	diameter	lux	diameter
White	34338	1.17	8584	2.35	3815	3.52	2146	4.7

MAX ZOOM

## Beam Opening



## Intensity

Distance (m)	5		10		15		20	
unit	lux	diameter	lux	diameter	lux	diameter	lux	diameter
White	4456	4.99	1114	9.97	495	14.96	278	19.94

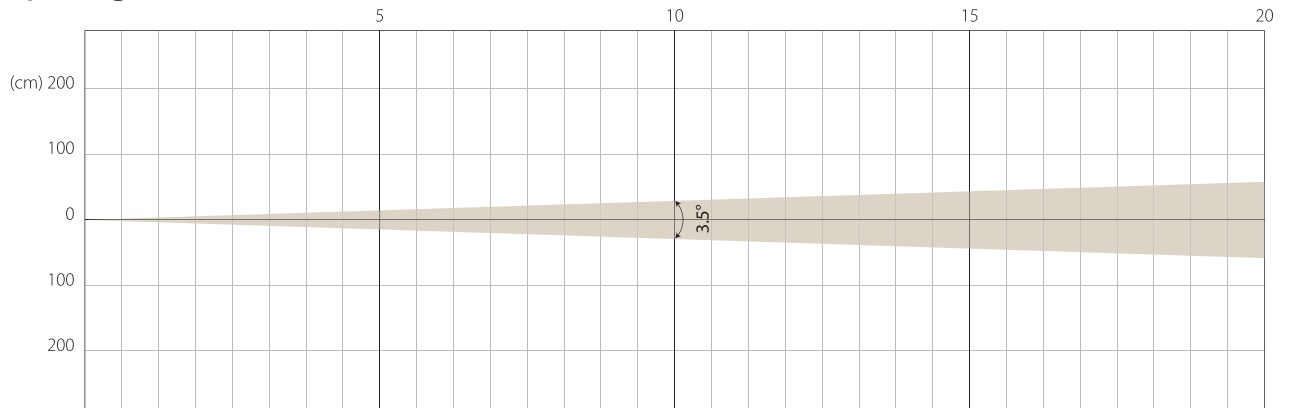
Note: Measurement done with Goniometer

# STAGE MODE

NATIVE CRI GREATER THAN 70

MIN ZOOM

## Beam Opening

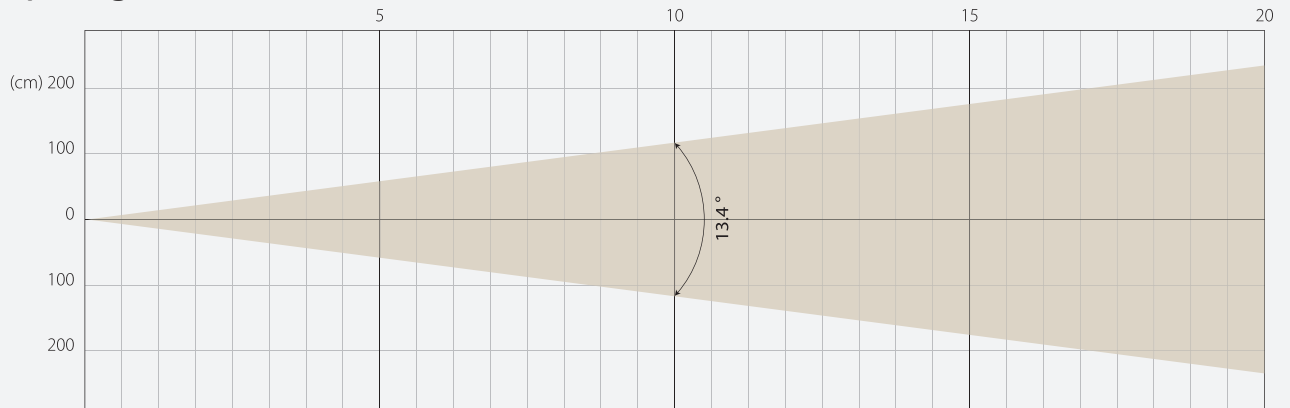


## Intensity

Distance (m)	5		10		15		20	
unit	lux	diameter	lux	diameter	lux	diameter	lux	diameter
White	203040	0.31	50760	0.61	22560	0.92	12690	1.22

MIDDLE ZOOM

## Beam Opening

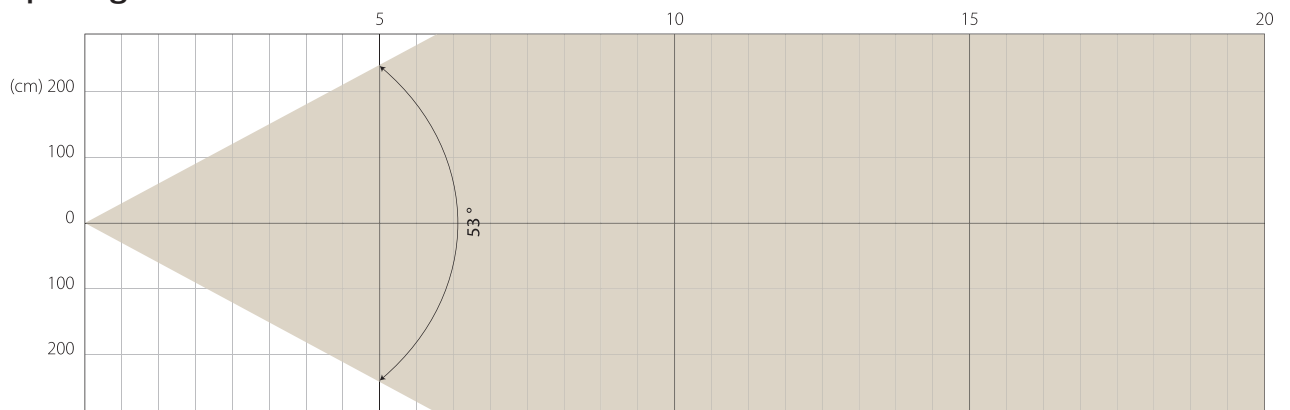


## Intensity

Distance (m)	5		10		15		20	
unit	lux	diameter	lux	diameter	lux	diameter	lux	diameter
White	36432	1.17	9108	2.35	4048	3.52	2277	4.7

MAX ZOOM

## Beam Opening



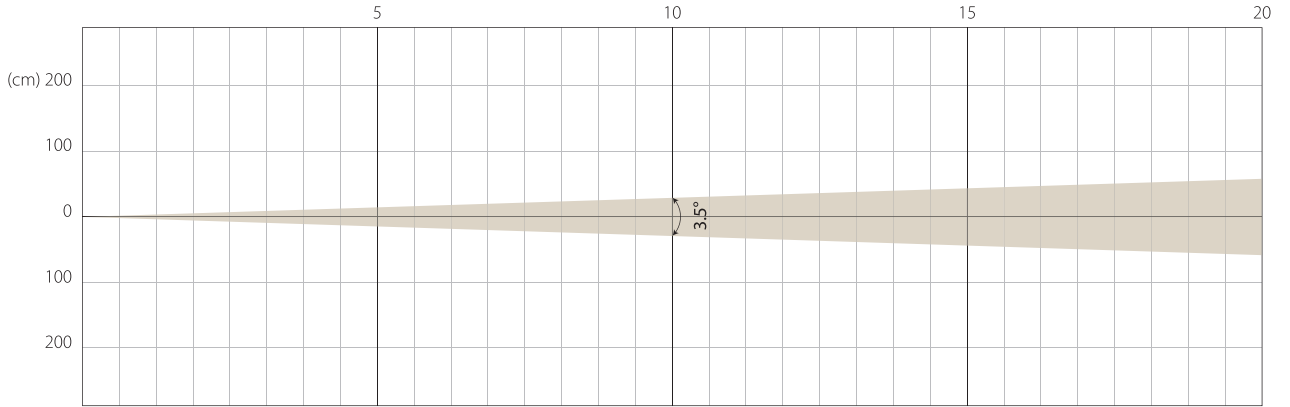
## Intensity

Distance (m)	5		10		15		20	
unit	lux	diameter	lux	diameter	lux	diameter	lux	diameter
White	4456	4.99	1114	9.97	495	14.96	278	19.94

Note: Measurement done with Goniometer

MIN ZOOM

### Beam Opening

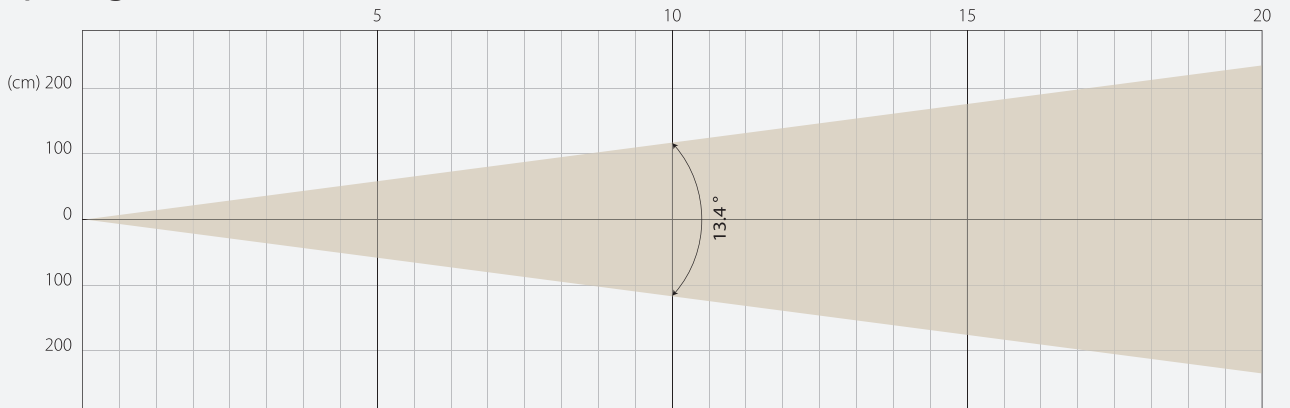


### Intensity

Distance (m)	5		10		15		20	
unit	lux	diameter	lux	diameter	lux	diameter	lux	diameter
White	123481	0.31	30870	0.61	13720	0.92	7718	1.22

MIDDLE ZOOM

### Beam Opening

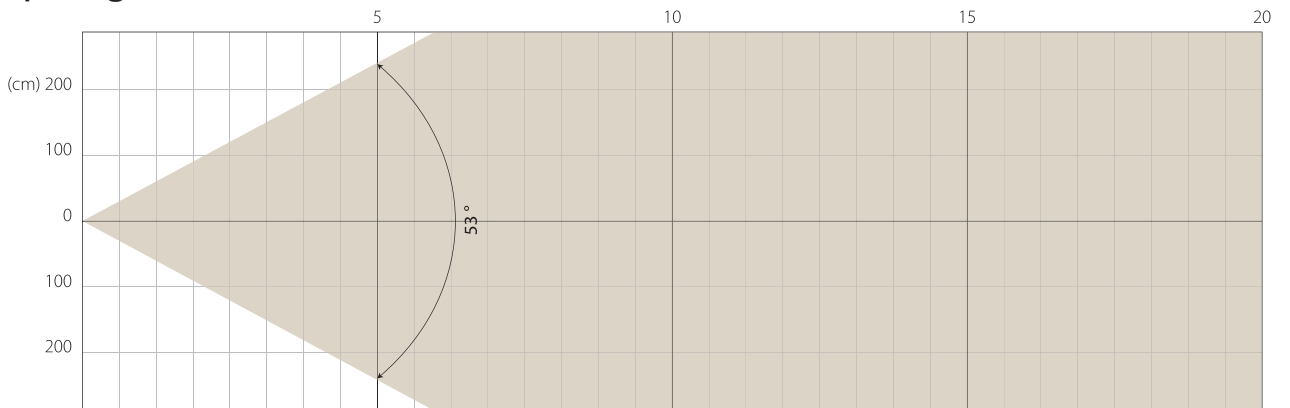


### Intensity

Distance (m)	5		10		15		20	
unit	lux	diameter	lux	diameter	lux	diameter	lux	diameter
White	25070	1.17	6268	2.35	2786	3.52	1567	4.7

MAX ZOOM

### Beam Opening



### Intensity

Distance (m)	5		10		15		20	
unit	lux	diameter	lux	diameter	lux	diameter	lux	diameter
White	4456	4.99	1114	9.97	495	14.96	278	19.94

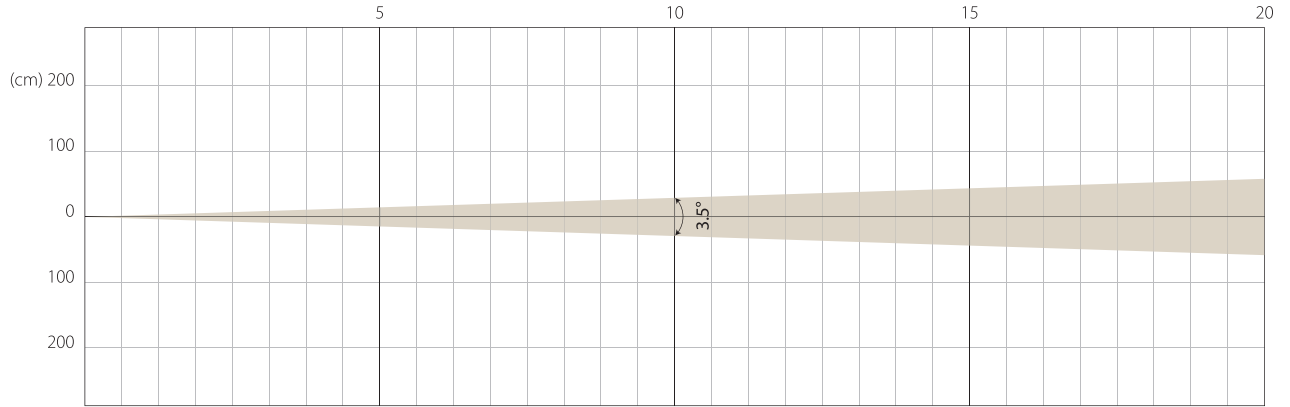
Note: Measurement done with Goniometer

# SUPER SILENCE MODE

NATIVE CRI GREATER THAN 70

MIN ZOOM

## Beam Opening

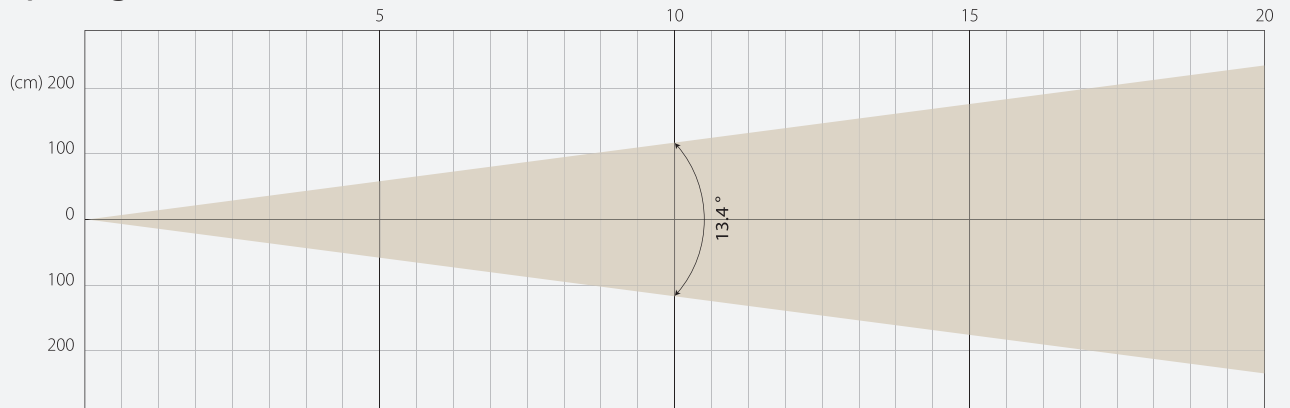


## Intensity

Distance (m)	5		10		15		20	
unit	lux	diameter	lux	diameter	lux	diameter	lux	diameter
White	92981	0.31	23245	0.61	10331	0.92	5811	1.22

MIDDLE ZOOM

## Beam Opening

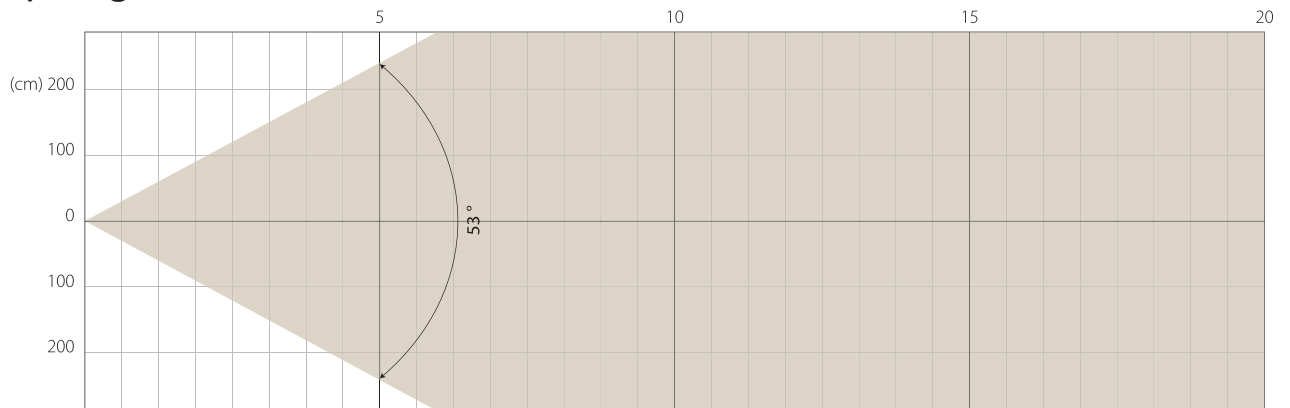


## Intensity

Distance (m)	5		10		15		20	
unit	lux	diameter	lux	diameter	lux	diameter	lux	diameter
White	18524	1.17	4631	2.35	2058	3.52	1158	4.7

MAX ZOOM

## Beam Opening

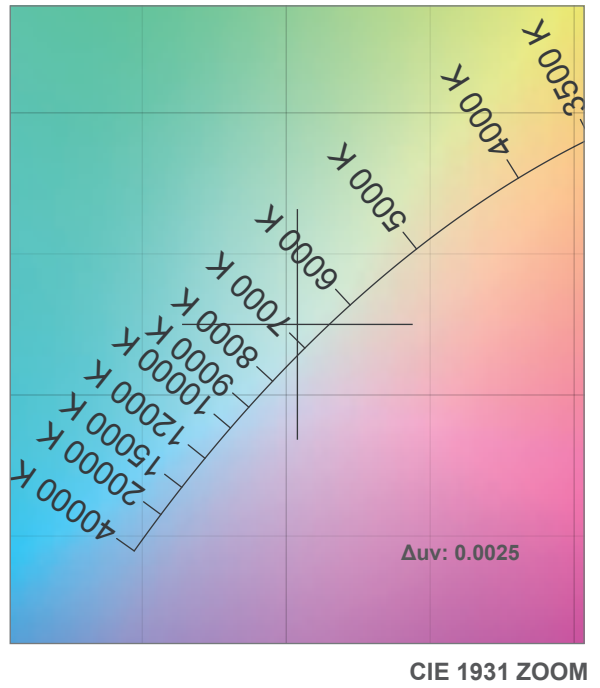
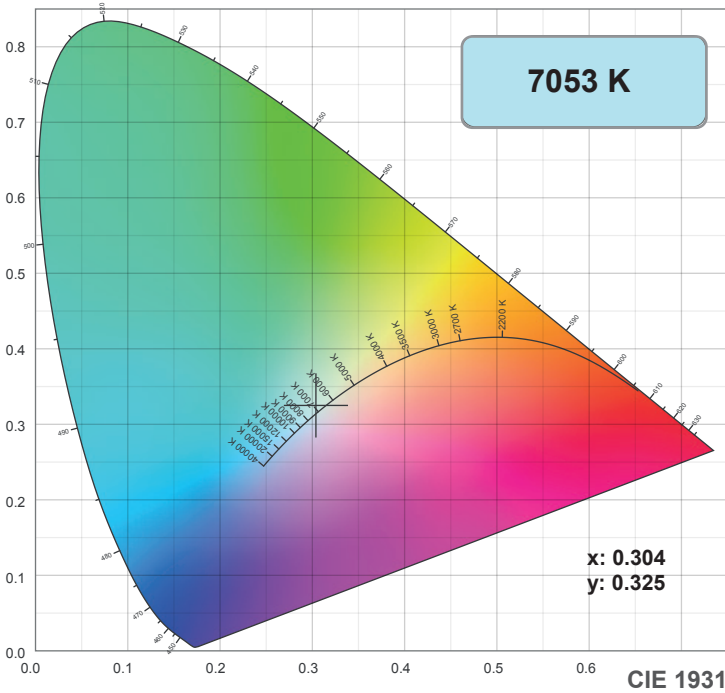


## Intensity

Distance (m)	5		10		15		20	
unit	lux	diameter	lux	diameter	lux	diameter	lux	diameter
White	4456	4.99	1114	9.97	495	14.96	278	19.94

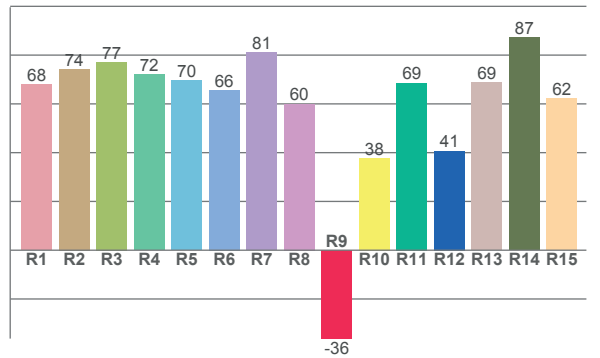
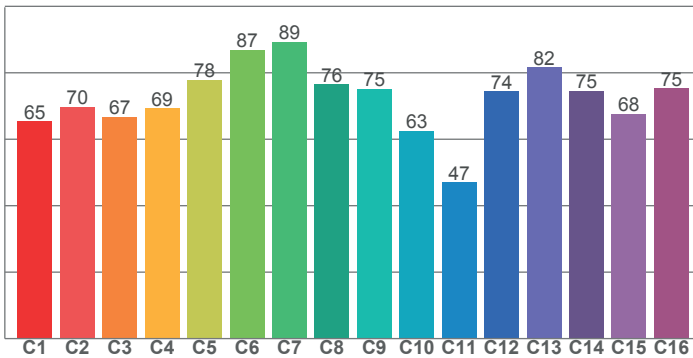
Note: Measurement done with Goniometer

# COLOR DETAILS



TM-30: 72.6

CRI: 71.0 (R1-R8)



CRI R values, only R1-R8 are used to calculate final CRI value

R1	R2	R3	R4	R5	R6	R7	R8	R9	R10	R11	R12	R13	R14	R15
67.9	74.3	77.2	72.0	69.6	65.6	81.2	60.0	-36.2	37.8	68.6	40.8	68.7	87.2	62.1

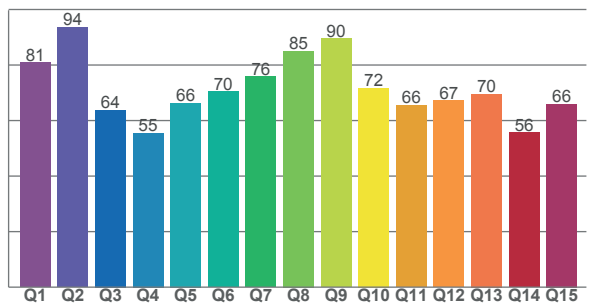
TM30 C values, 16 binned values out of total of 99 C values

C1	C2	C3	C4	C5	C6	C7	C8	C9	C10	C11	C12	C13	C14	C15	C16
65.4	69.8	66.8	69.4	77.8	86.9	89.3	76.5	75.1	62.6	47.1	74.3	81.7	74.6	67.6	75.3

CQS Q values

Q1	Q2	Q3	Q4	Q5	Q6	Q7	Q8	Q9	Q10	Q11	Q12	Q13	Q14	Q15
80.9	93.6	63.8	55.5	66.3	70.5	75.8	85.0	89.5	71.8	65.5	67.2	69.6	55.7	66.0

CQS: 69.7



## Color parameters

Color temperature	Color rendering index	Red component	Color fidelity	Color gamut	Color quality scale	Color coordinate cie 1931	Color coordinate cie 1931	Color coordinate	Color coordinate	Color deviation from black body
CCT	CRI	CRI R9	TM30 Rf	TM30 Rg	CQS	x	y	u	v	Δuv
7053 K	71.0	-36.2	72.6	92.1	69.7	0.304	0.325	0.193	0.310	0.0025

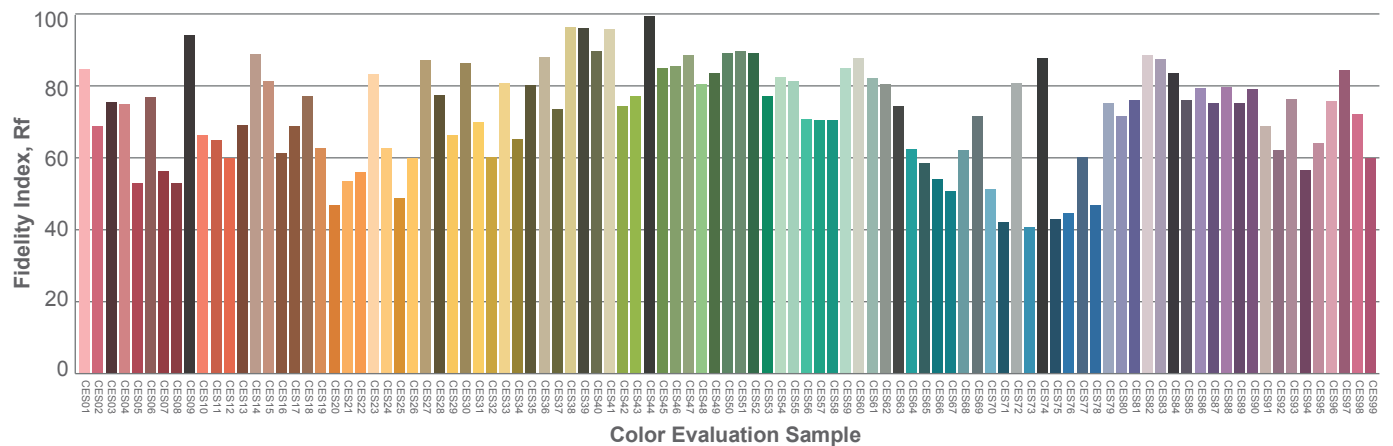
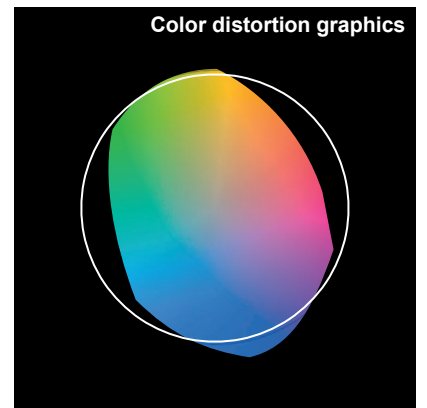
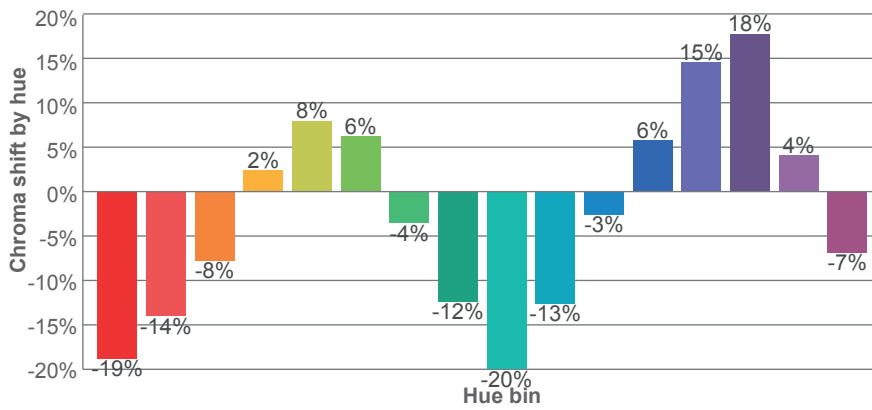
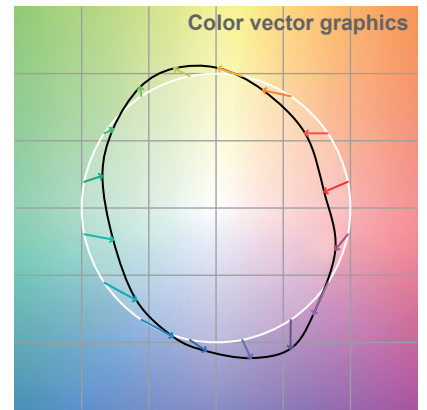
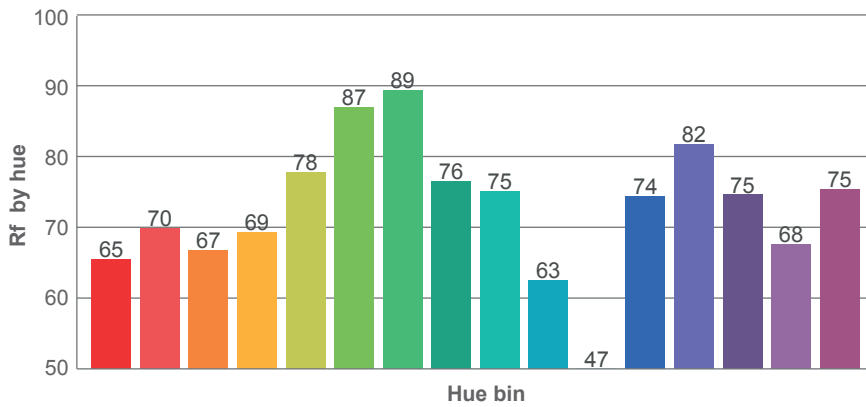
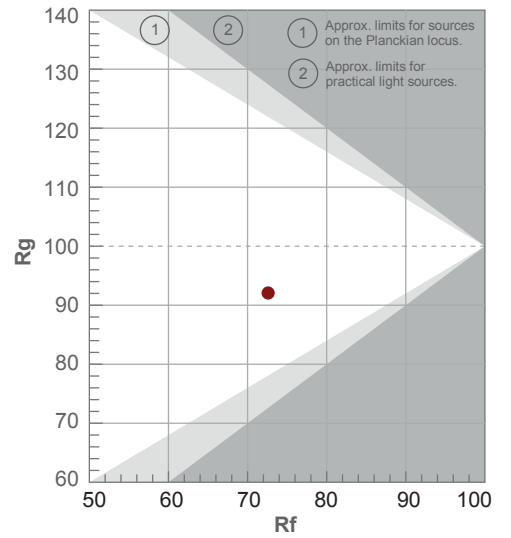


# TM-30 DETAILS

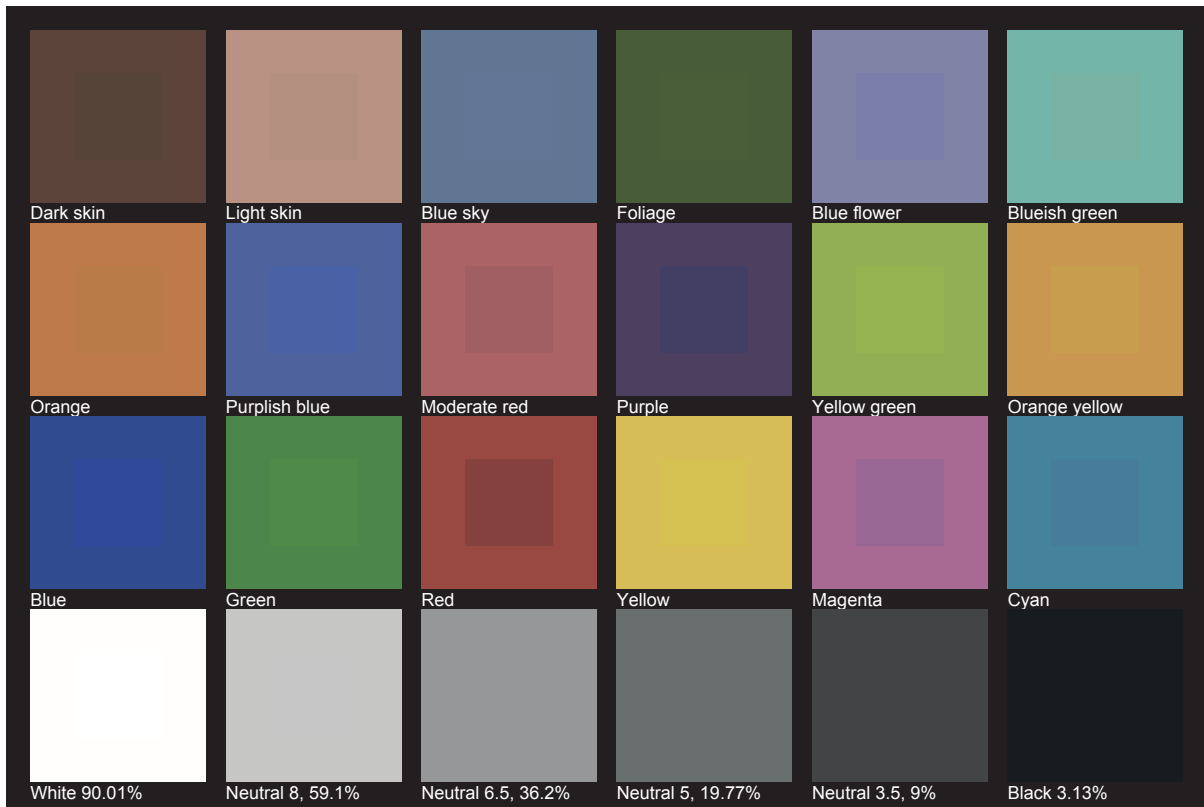
**Rf 72.6**  
Fidelity index Rf

**Rg 92.1**  
Gamut index Rg

Hue Bin	R <sub>f</sub>	Shifts (%)	
		Chroma	Hue
1	65	-19%	-4%
2	70	-14%	9%
3	67	-8%	20%
4	69	2%	19%
5	78	8%	10%
6	87	6%	-3%
7	89	-4%	-6%
8	76	-12%	-7%
9	75	-20%	8%
10	63	-13%	24%
11	47	-3%	27%
12	74	6%	13%
13	82	15%	4%
14	75	18%	-12%
15	68	4%	-25%
16	75	-7%	-13%



# TLCI 48







**AYRTON**

Digital Lighting