



# GHIBLI S

PHOTOMETRY



**AYRTON**  
Digital Lighting





<b>Total Flux</b>	23026 lm (@zoom 128, integrating sphere measurement, Fan mode auto)
-------------------	---

<b>CCT @LED engin</b>	8000 (±500K)
<b>CCT @open</b>	7000 (±500K)
<b>Ra @open</b>	70 (±2)
<b>TLCI</b>	50
<b>TM-30</b>	Rf: 72.7 Rg: 92.2

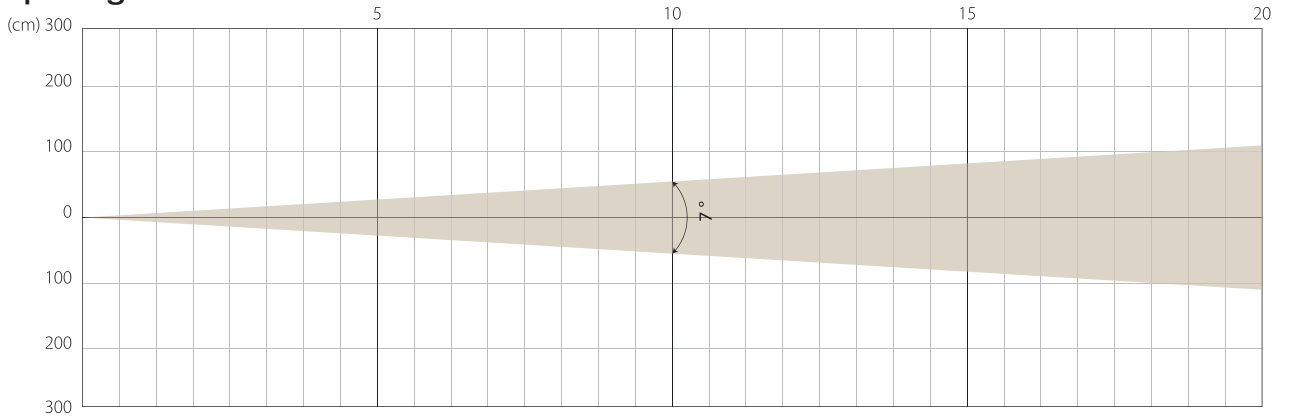
<b>Fan Mode</b>	<b>Noise Level (dBA)</b>	<b>by Goniometer (lm)</b>	<b>by Sphere (lm)</b>
<b>Auto</b>	45,5	20437	22833
<b>Stage</b>	47,6	20934	23026
<b>Silence</b>	39,4	16026	17486
<b>Super Silence</b>	34,5	13245	16134

Note: noise measured @1m distance, static status, ambient 31 dBA.

<b>Voltage / Power</b>	100-240V, 50-60HZ	800 W
<b>Fixture Dimension / Weight</b>	468 x 734 x 280 mm	35.6 kg
<b>Packing Dimension / Weight</b>	660 x 675 x 560 mm	52.6 kg

MIN ZOOM

### Beam Opening

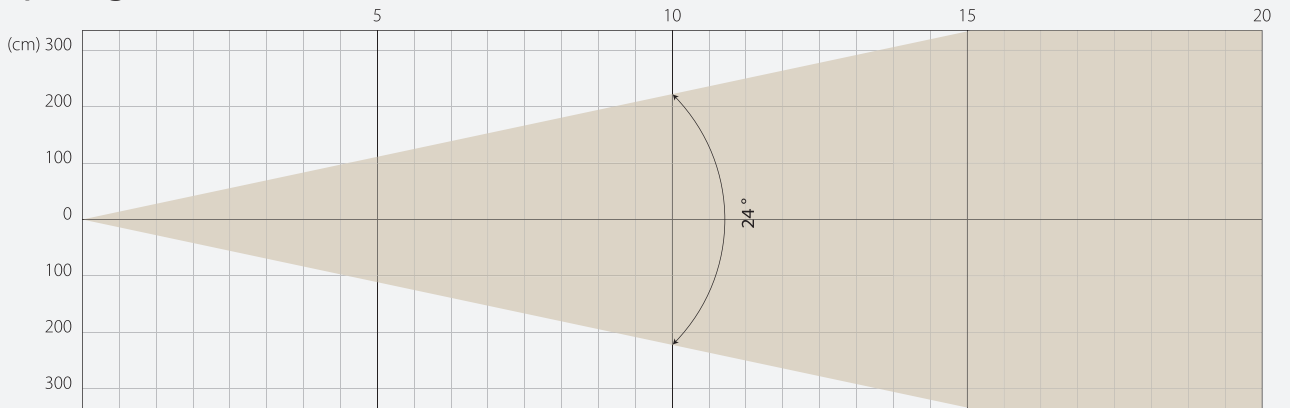


### Intensity

Distance (m)	5		10		15		20	
unit	lux	diameter	lux	diameter	lux	diameter	lux	diameter
White	50416	0,61	12604	1,22	5602	1,83	3151	2,45

MIDDLE ZOOM

### Beam Opening

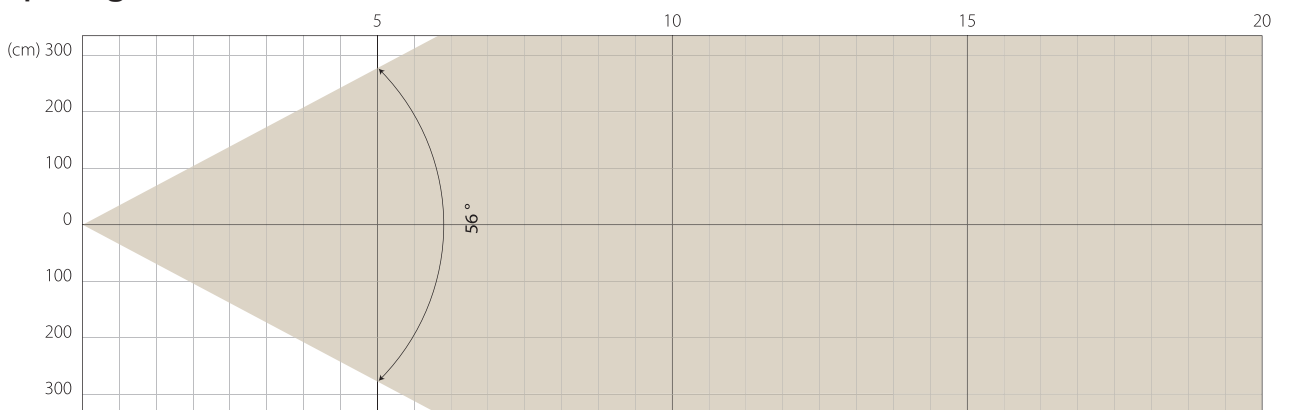


### Intensity

Distance (m)	5		10		15		20	
unit	lux	diameter	lux	diameter	lux	diameter	lux	diameter
White	7713	2,13	1928	4,25	857	6,38	482	8,5

MAX ZOOM

### Beam Opening



### Intensity

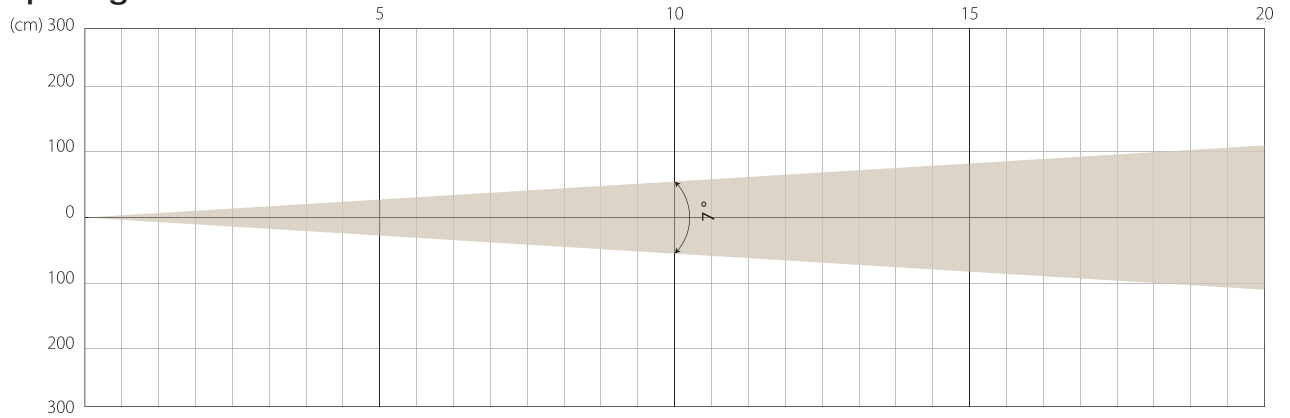
Distance (m)	5		10		15		20	
unit	lux	diameter	lux	diameter	lux	diameter	lux	diameter
White	1362	5,32	340	10,63	151	15,95	85	21,27

# STAGE MODE

NATIVE CRI GREATER THAN 70

MIN ZOOM

## Beam Opening

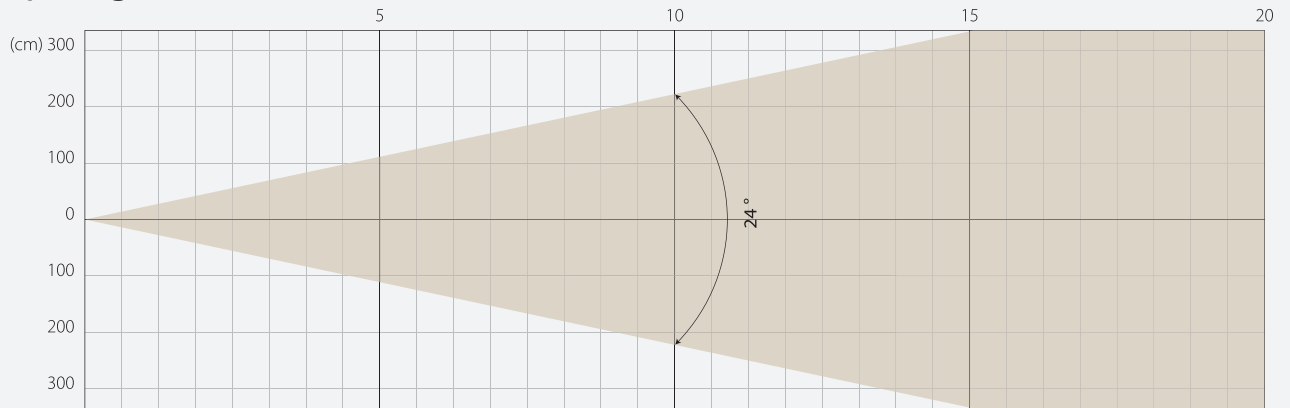


## Intensity

Distance (m)	5		10		15		20	
unit	lux	diameter	lux	diameter	lux	diameter	lux	diameter
White	51615	0,61	12904	1,22	5735	1,83	3226	2,45

MIDDLE ZOOM

## Beam Opening

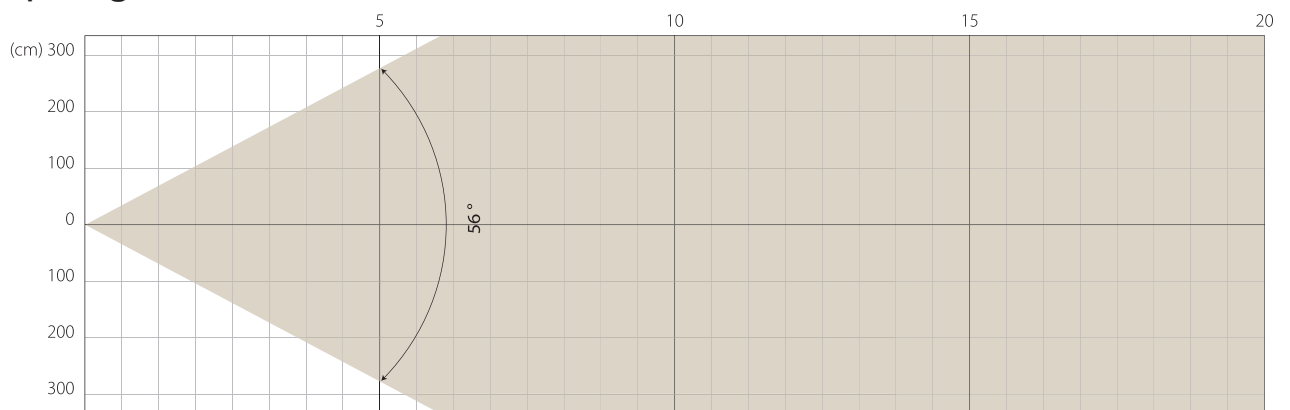


## Intensity

Distance (m)	5		10		15		20	
unit	lux	diameter	lux	diameter	lux	diameter	lux	diameter
White	7985	2,13	1996	4,25	887	6,38	499	8,5

MAX ZOOM

## Beam Opening

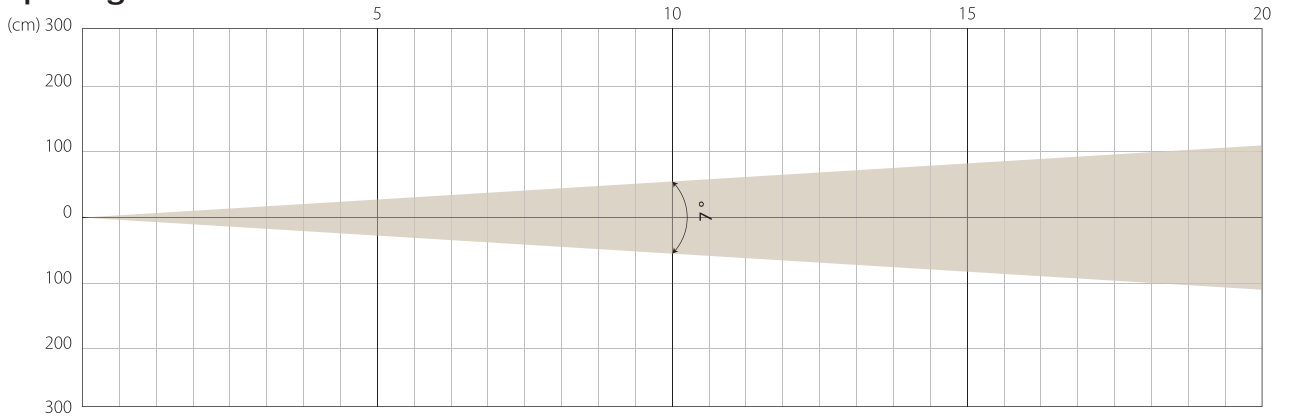


## Intensity

Distance (m)	5		10		15		20	
unit	lux	diameter	lux	diameter	lux	diameter	lux	diameter
White	1418	5,32	354	10,63	158	15,95	89	21,27

MIN ZOOM

### Beam Opening

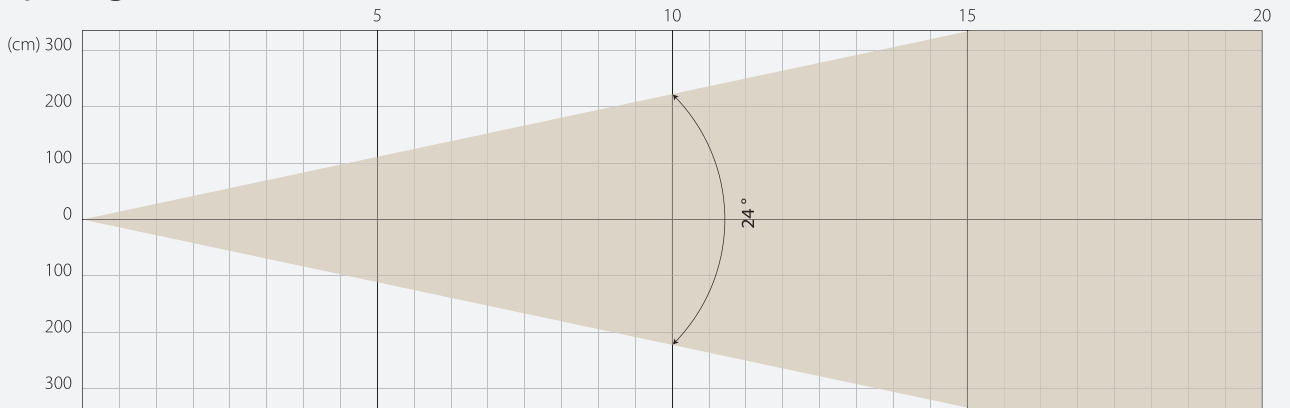


### Intensity

Distance (m)	5		10		15		20	
unit	lux	diameter	lux	diameter	lux	diameter	lux	diameter
White	39539	0,61	9885	1,22	4393	1,83	2471	2,45

MIDDLE ZOOM

### Beam Opening

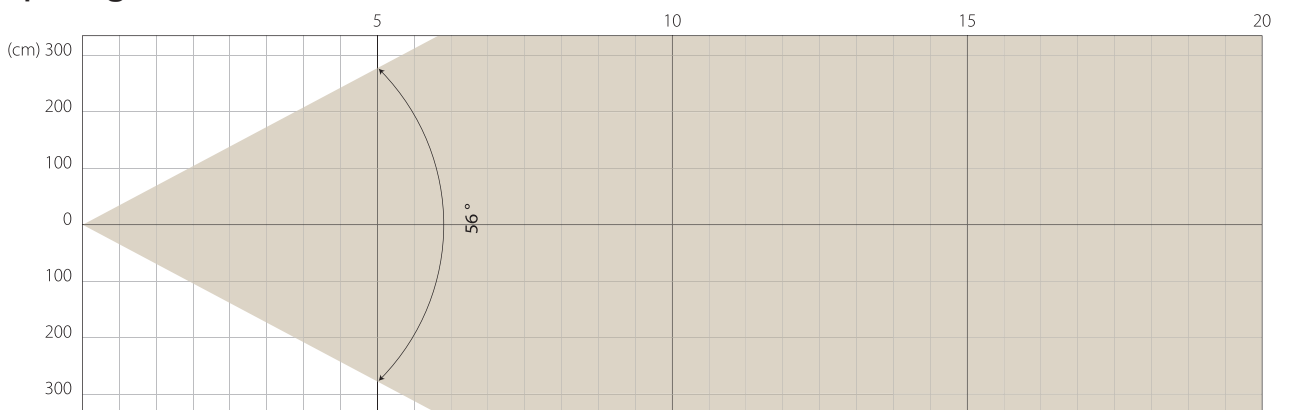


### Intensity

Distance (m)	5		10		15		20	
unit	lux	diameter	lux	diameter	lux	diameter	lux	diameter
White	6049	2,13	1512	4,25	672	6,38	378	8,5

MAX ZOOM

### Beam Opening



### Intensity

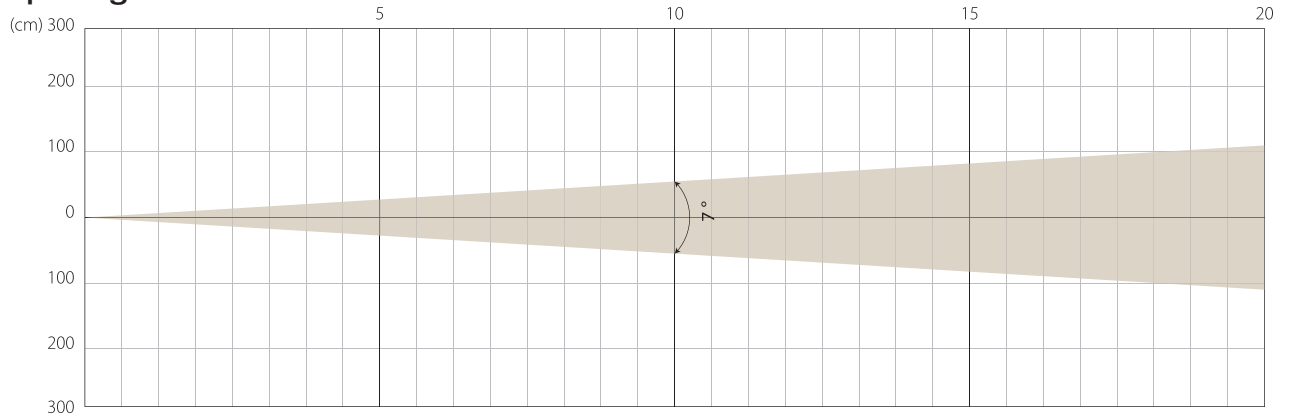
Distance (m)	5		10		15		20	
unit	lux	diameter	lux	diameter	lux	diameter	lux	diameter
White	1066	5,32	266	10,63	118	15,95	67	21,27

# SUPER SILENCE MODE

NATIVE CRI GREATER THAN 70

MIN ZOOM

## Beam Opening

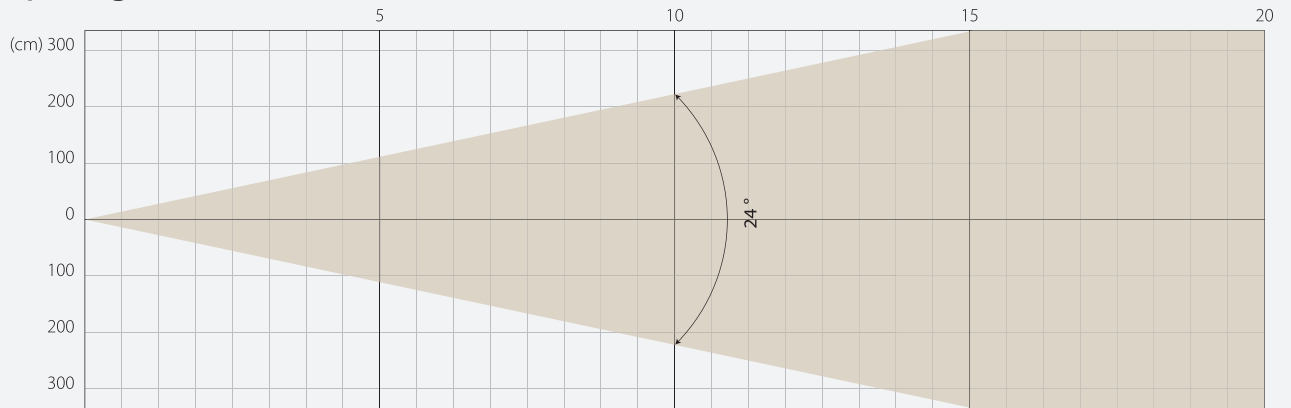


## Intensity

Distance (m)	5		10		15		20	
unit	lux	diameter	lux	diameter	lux	diameter	lux	diameter
White	32327	0,61	8082	1,22	3592	1,83	2020	2,45

MIDDLE ZOOM

## Beam Opening

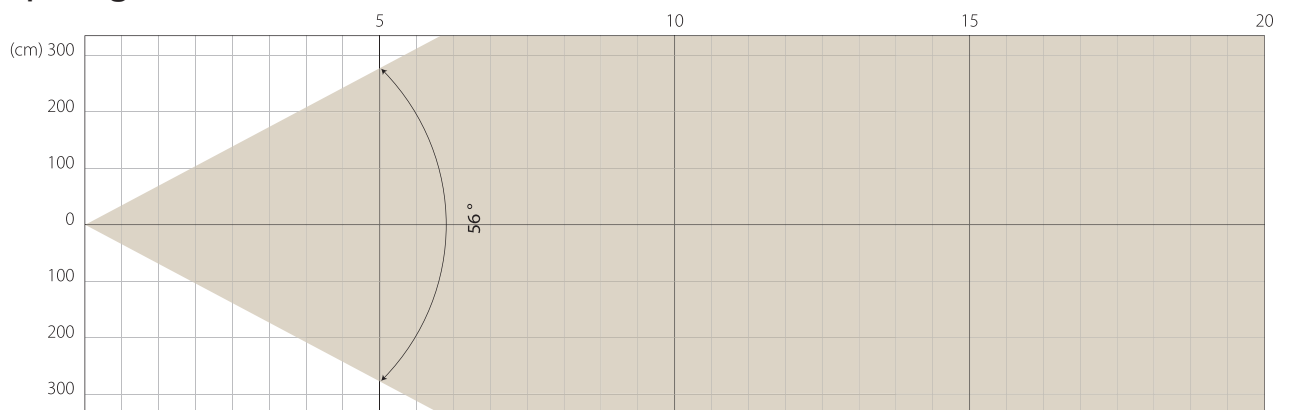


## Intensity

Distance (m)	5		10		15		20	
unit	lux	diameter	lux	diameter	lux	diameter	lux	diameter
White	4946	2,13	1237	4,25	550	6,38	309	8,5

MAX ZOOM

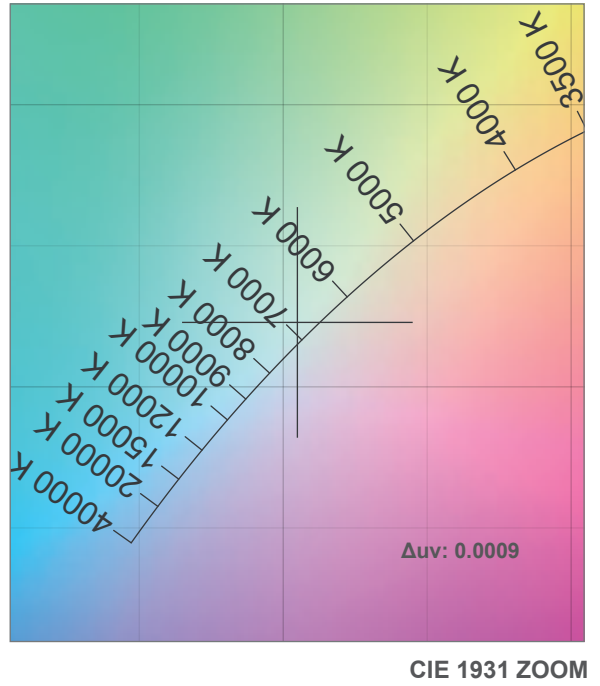
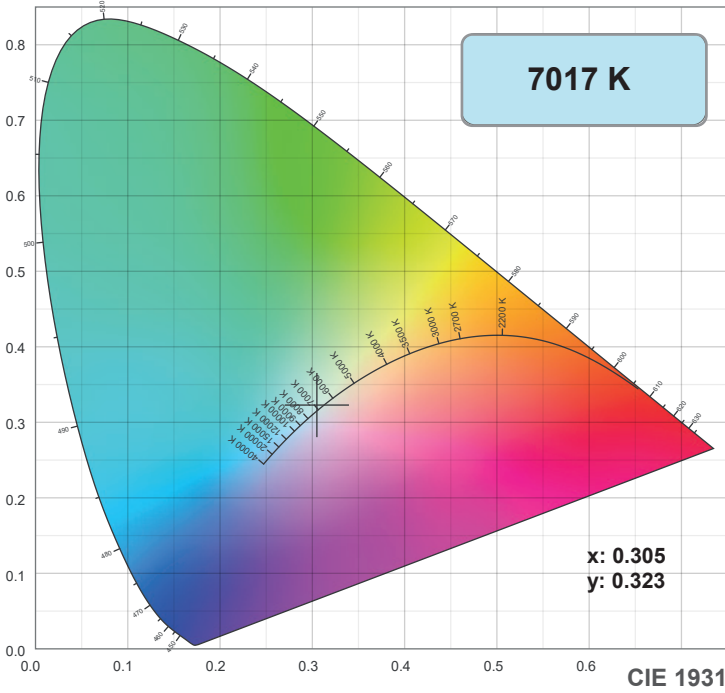
## Beam Opening



## Intensity

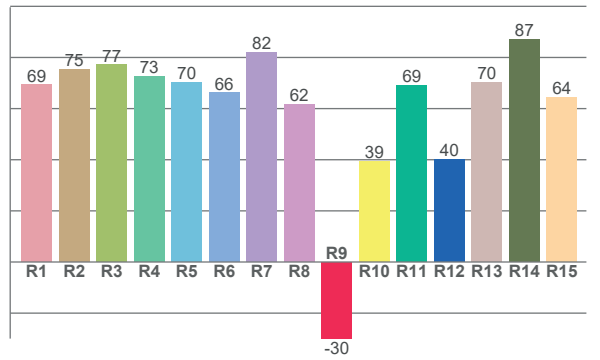
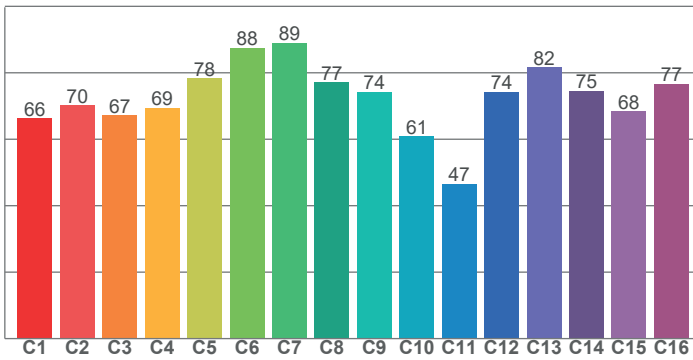
Distance (m)	5		10		15		20	
unit	lux	diameter	lux	diameter	lux	diameter	lux	diameter
White	875	5,32	219	10,63	97	15,95	55	21,27

# COLOR DETAILS



**TM-30: 72.7**

**CRI: 71.8 (R1-R8)**



CRI R values, only R1-R8 are used to calculate final CRI value

R1	R2	R3	R4	R5	R6	R7	R8	R9	R10	R11	R12	R13	R14	R15
69.3	75.4	77.1	72.8	70.3	66.1	82.0	61.6	-30.0	39.2	68.9	40.1	70.2	87.0	64.4

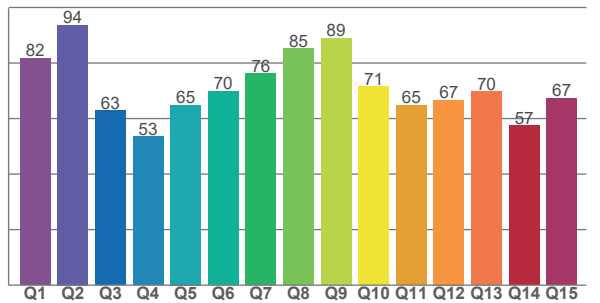
TM30 C values, 16 binned values out of total of 99 C values

C1	C2	C3	C4	C5	C6	C7	C8	C9	C10	C11	C12	C13	C14	C15	C16
66.3	70.2	67.2	69.4	78.4	87.5	89.0	77.1	74.2	60.9	46.5	74.2	81.6	74.6	68.3	76.6

CQS Q values

Q1	Q2	Q3	Q4	Q5	Q6	Q7	Q8	Q9	Q10	Q11	Q12	Q13	Q14	Q15
81.7	93.7	62.8	53.4	64.9	69.8	76.1	85.3	88.9	71.5	64.8	66.7	69.6	57.4	67.3

**CQS: 69.5**



## Color parameters

Color temperature	Color rendering index	Red component	Color fidelity	Color gamut	Color quality scale	Color coordinate cie 1931	Color coordinate cie 1931	Color coordinate	Color coordinate	Color deviation from black body
CCT	CRI	CRI R9	TM30 Rf	TM30 Rg	CQS	x	y	u	v	Δuv
7017 K	71.8	-30.0	72.7	92.2	69.5	0.305	0.323	0.195	0.309	0.0009

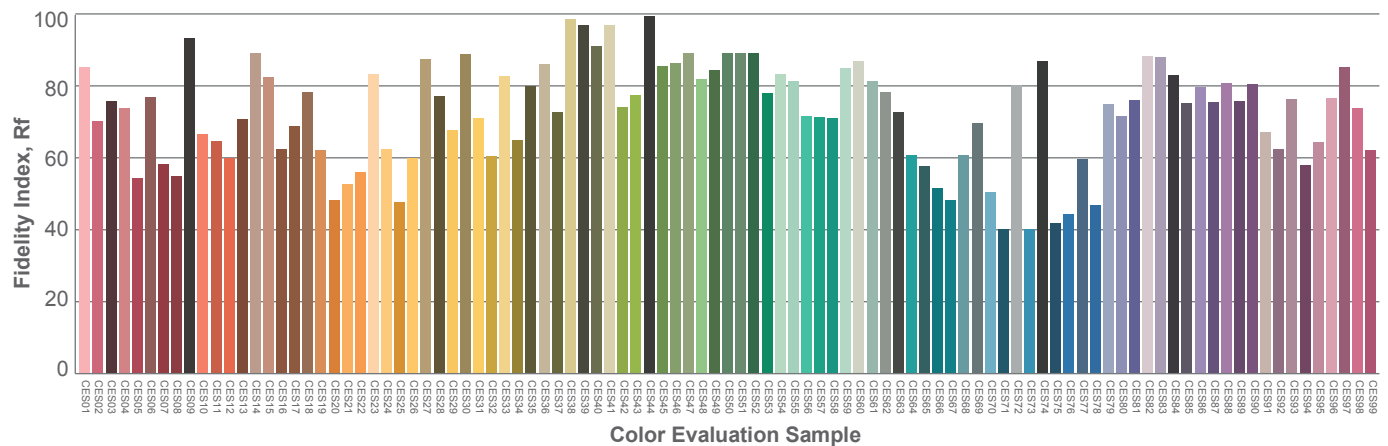
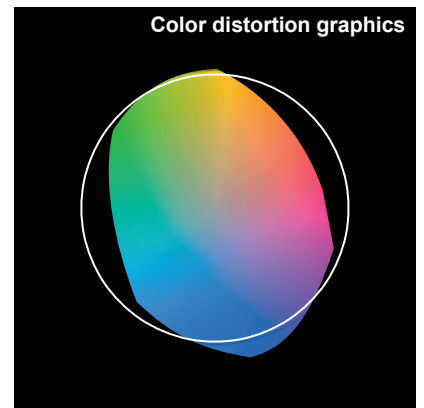
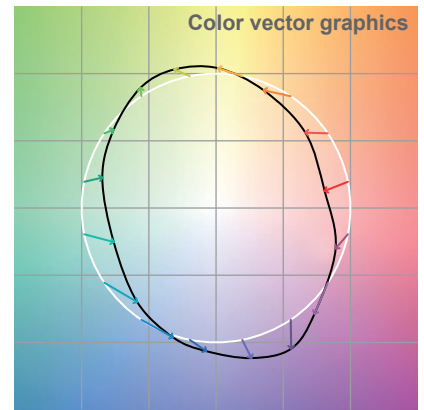
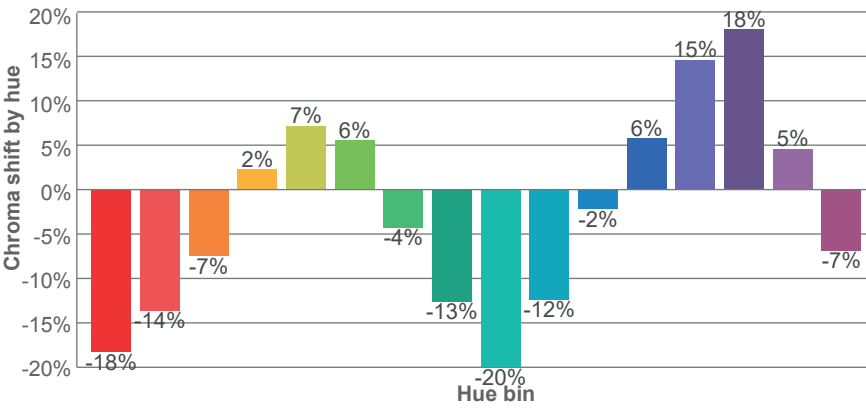
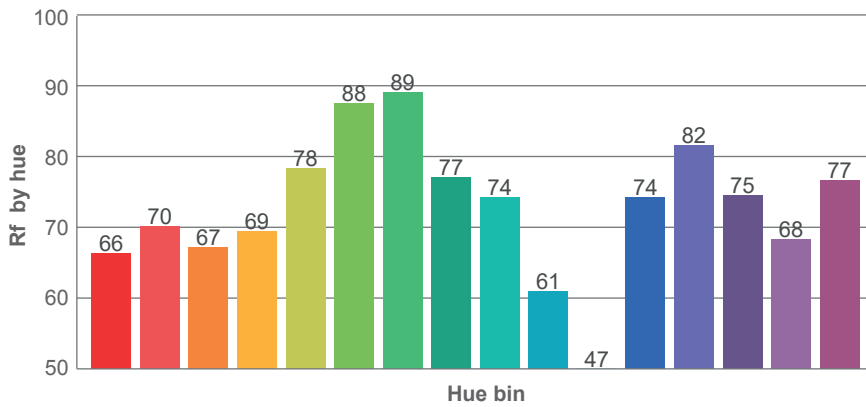
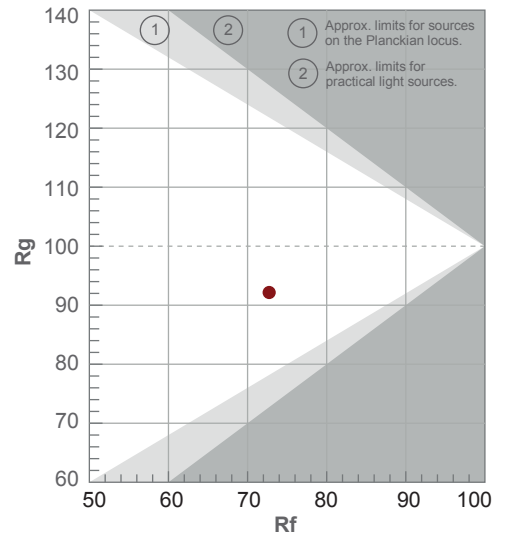


# TM-30 DETAILS

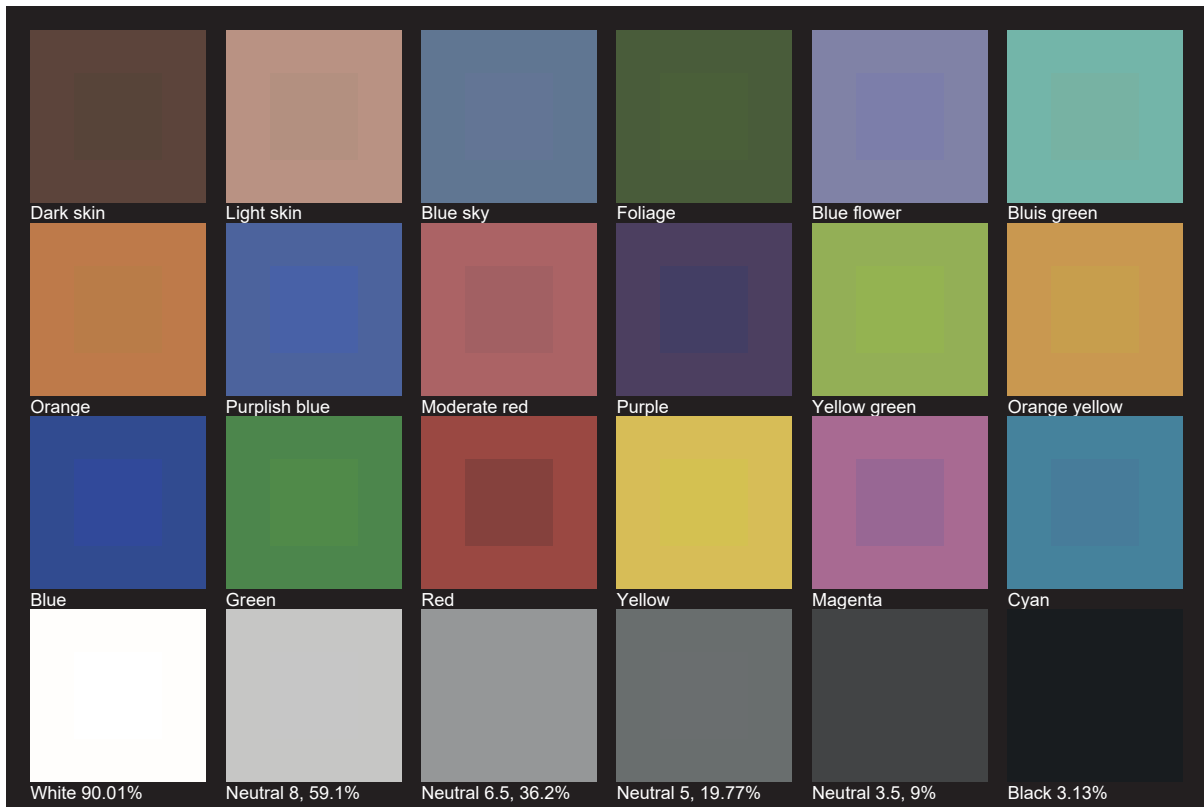
**Rf 72.7**  
Fidelity index Rf

**Rg 92.2**  
Gamut index Rg

Hue Bin	R <sub>f</sub>	Shifts (%)	
		Chroma	Hue
1	66	-18%	-3%
2	70	-14%	10%
3	67	-7%	19%
4	69	2%	19%
5	78	7%	10%
6	88	6%	-3%
7	89	-4%	-6%
8	77	-13%	-6%
9	74	-20%	10%
10	61	-12%	26%
11	47	-2%	27%
12	74	6%	13%
13	82	15%	4%
14	75	18%	-12%
15	68	5%	-25%
16	77	-7%	-12%



# TLCI 50







**AYRTON**

Digital Lighting