



After the enormous success of the Titan Tube, Astera has created the double length Hyperion Tube, which measures just over 2 meters and around 80 inches. Double the LEDs, double the batteries, double the brightness, double the pixels and the same high-quality light with App, CRMX and on-tube control and wired DMX option.



Max 20h



Wireless DMX



IP65



App

SPECIFICATIONS

Please note that due to a component shortage we had to do internal changes to Helios Tube and units manufactured after September 2021 have the BTB feature built-in and are now called FP3-BTB.

	Helios Tube	Helios Tube BTB
Order Code	FP3	FP3-BTB
LED Engine	Titan LED Engine	
Colors	RGBMintAmber	
Total LED Power	144 W	
LED Power Draw	92 W	
Luminous Flux 4000 K	5 800 Lumens	
Light Output 4000 K @ 1 m	1 570 Lux	
CRI (Ra)/ TLCI 3200 - 6500 K*	≥96	
Beam Angle	135° x 115°	
Field Angle	175° x 160°	
Strobe	0 - 25 Hertz	
Pixels	32	
Battery Runtime	up to 20 hours	
Battery Lifetime	70 % after 300 cycles	
Charging Time (nominal)	3 hours	
DC Input	24 VDC - 4 A	
DC Connector	5.5 mm x 2.1 mm	
Wired DMX	Yes (via FP3-DTL / PWB-2-86)	
CRMX Receiver	Built-in	
BluetoothBridge BTB	No	Built-in
Wireless Protocols	CRMX, UHF	CRMX, UHF, Bluetooth, WiFi
Wireless Range	CRMX/UHF up to 300 m / 330 yds	CRMX/UHF up to 300 m / 330 yds Bluetooth up to 3 m / 3.3 yds
Infrared Control	Yes	
Housing Material	Polycarbonate, metal end caps	
IP Rating	IP65 (only with FP1-SP)	
Ambient Operating Temperature	0 - 40 °C / 32 - 104 °F	

Weight	2.9 kg / 6.39 lbs
Dimensions	2 031 mm x Ø 43 mm / 79.9" x Ø 1.7"
Mounting Options	2x M5 thread, 2x TubeHolder (with 2x M5 and 1x 1/4" - 20 UNC thread)

*Typical value

RF CHARACTERISTICS FP3

Wireless Modules	EU: UHF*** (863-870MHz)	USA: UHF (917-922.20MHz)	AUS: UHF (922.30-927.50MHz)	SGP: UHF (920.50-924.50MHz)	KOR: UHF (917.9-921.5MHz)
Modulation	FHSS	FHSS	FHSS	FHSS	FHSS
ERP (Transmitter)	<25mW	<25mW	<25mW	<25mW	<25mW
Channel Count	47	53	53	41	10

Wireless Modules	RUS: UHF (868.75-869.12MHz)	JPN: UHF (922.80-926.40MHz)	CRMX (2402-2480MHz)
Modulation	FHSS	FHSS	FHSS
ERP (Transmitter)	<25mW	<25mW	-
Channel Count	6	19	79

***General allocation of frequencies for use by short-range radio applications

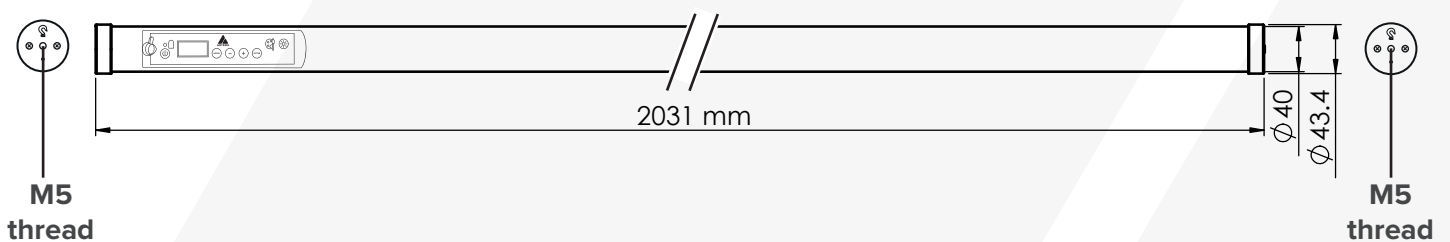
RF CHARACTERISTICS FP3-BTB



Wireless Modules	EU: UHF*** (863-870MHz)	USA: UHF (917-922.20MHz)	AUS: UHF (922.30-927.50MHz)	SGP: UHF (920.50-924.50MHz)	KOR: UHF (917.9-921.5MHz)
Modulation	FHSS	FHSS	FHSS	FHSS	FHSS
ERP (Transmitter)	<25mW	<25mW	<25mW	<25mW	<25mW
Channel Count	47	53	53	41	10

Wireless Modules	RUS: UHF (868.75-869.12MHz)	JPN: UHF (922.80-926.40MHz)	CRMX (2402-2480MHz)	Bluetooth 5.0 LE (2402-2480MHz)	WiFi (2412-2472MHz)
Modulation	FHSS	FHSS	FHSS	FHSS	DSSS, OFDM
ERP (Transmitter)	<25mW	<25mW	-	10mW (BLE)	<100mW
Channel Count	6	19	79	40	13

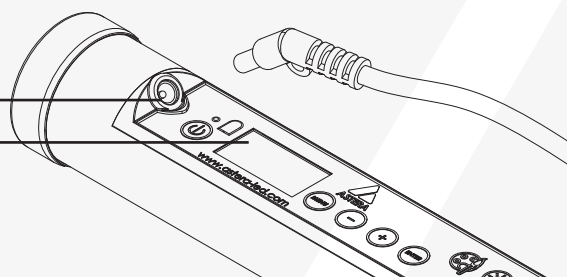
DRAWINGS



CONNECTIONS + DISPLAY

Wired Data Connection

Backside Display



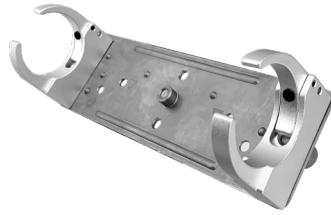
ACCESSORIES

FEATURES

TubeHolder
AX1-H



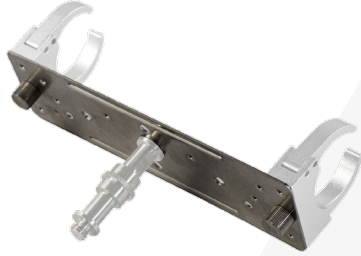
Fix tubes via screws or BabyPin to walls and structures



WingPlate
AX1-WP



Hang one Tube with BabyPin or connect several Tubes



CrossPlate
AX1-CP



Holds up to 4 Tubes



BabyPin
FP1-BLT



EyeBolt
FP1-EBLT



Waterproof Protection Cover
FP1/2-SP



Titan Power/Data Combination Cable
5/10/15 m

FP1-PWB-CAB-5/10/15



Extension Cable for Helios, Titan, Hyperion Tube
5m

FP1-EXC



ChargingCase
FP3-CHRCSE



Weight (empty): 13 kg / 28.7 lbs
Weight (full): 34.4 kg / 75.8 lbs

Dimensions
22262 mm x 394 mm x 149 mm / 89.05" x 15.51" x 5.86"

Hyperion Tube Kit

FP3-SET



Included in the Kit

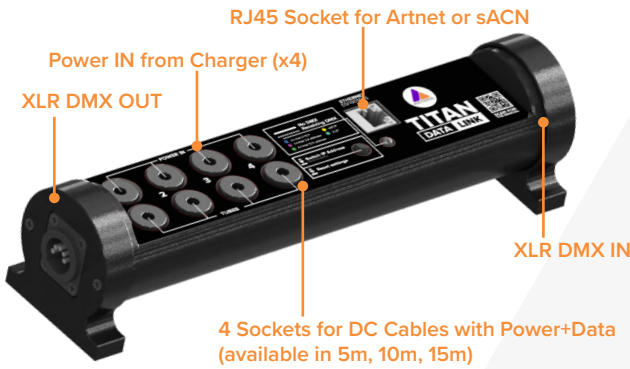
- 1x FP3 Hyperion Tube (FP3)
- 2x TubeHolder (AX1-H)
- 2x EyeBolt (FP1-EBLT)
- 1x DC Socket Cover (FP1/2-SP)

CHARGING & CONNECTING

DATALINK

FP3-DTL

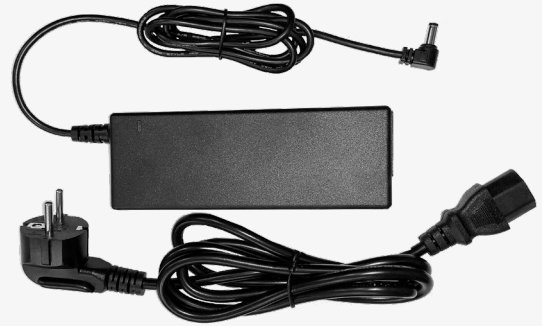
Required device to send wired DMX to Hyperion Tube. Also useful for Titan Tube and Helios Tube if no Titan PowerBox is available or to work with multiple universes on one PowerBox.



POWER SUPPLY FOR HYPERION TUBE

FP3-CHR

AC to DC power converter to charge 1 Hyperion Tube or to wire it for a longer installation.



TYPICAL SPECTRAS

