



# EURUS TC

PHOTOMETRY



**AYRTON**  
Digital Lighting





<b>Total Flux</b>	25518 lm (@zoom 128, integrating sphere measurement, Fan mode auto)
-------------------	---

<b>CCT @LED engin</b>	7000 (±500K)
<b>CCT @open</b>	6200 (±500K)
<b>Ra @open</b>	90 (±2)
<b>TLCI</b>	88
<b>TM-30</b>	Rf: 86.8 Rg: 94.2

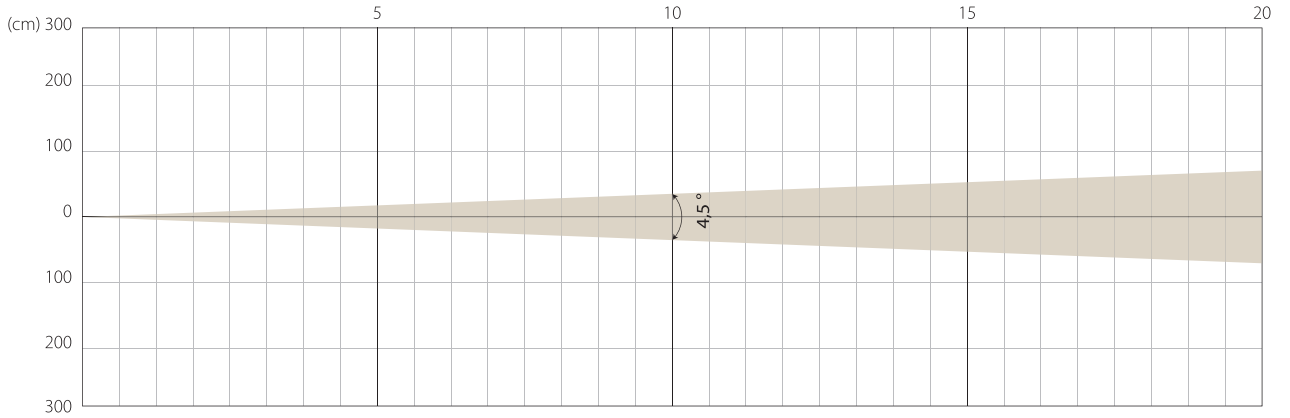
<b>Fan Mode</b>	<b>Noise Level (dBA)</b>	<b>by Goniometer (lm)</b>	<b>by Sphere (lm)</b>
<b>Auto</b>	45,6	18300	24614
<b>Stage</b>	49,5	18230	25518
<b>Silence</b>	39,7	13316	17394
<b>Super Silence</b>	34,3	8118	10274

Note: noise measured @1m distance, static status, ambient 31 dBA.

<b>Voltage / Power</b>	100-240V, 50-60Hz	1000 W
<b>Fixture Dimension / Weight</b>	445 x 743 x 273 mm	32.9 kg
<b>Packing Dimension / Weight</b>	660 x 675 x 560 mm	50.5 kg

MIN ZOOM

### Beam Opening

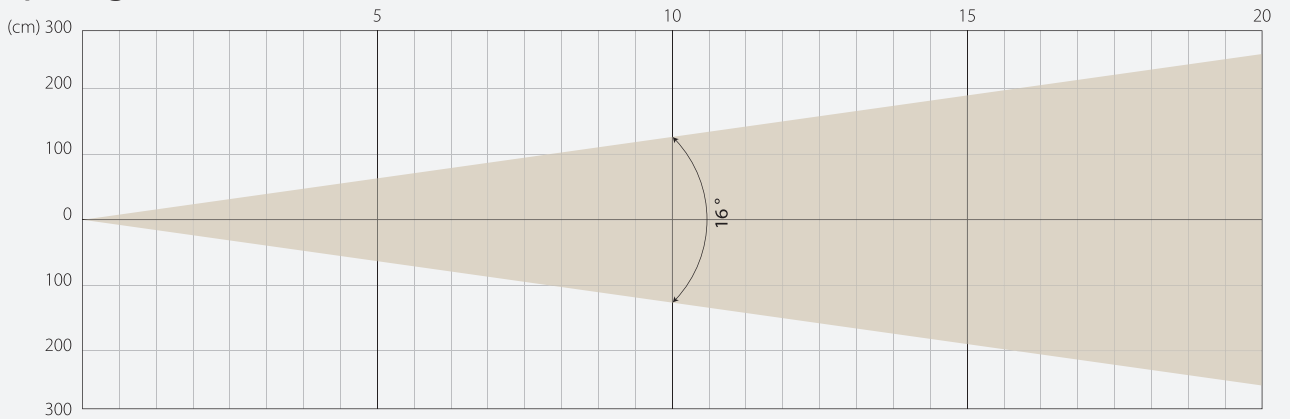


### Intensity

Distance (m)	5		10		15		20	
unit	lux	diameter	lux	diameter	lux	diameter	lux	diameter
White	67343	0,39	16836	0,79	7483	1,18	4209	1,57

MIDDLE ZOOM

### Beam Opening

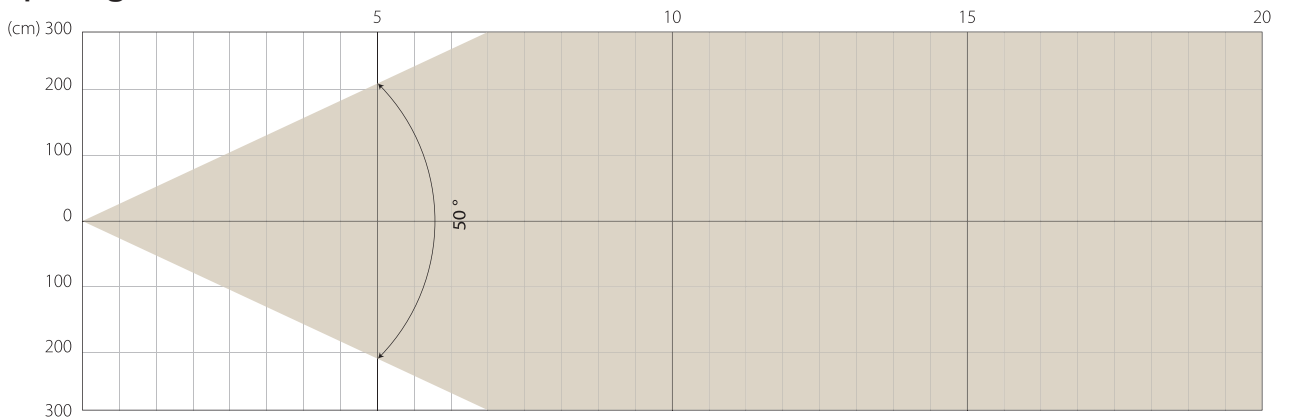


### Intensity

Distance (m)	5		10		15		20	
unit	lux	diameter	lux	diameter	lux	diameter	lux	diameter
White	11694	1,41	2924	2,81	1299	4,22	731	5,62

MAX ZOOM

### Beam Opening



### Intensity

Distance (m)	5		10		15		20	
unit	lux	diameter	lux	diameter	lux	diameter	lux	diameter
White	1459	4,66	365	9,33	162	13,99	91	18,65

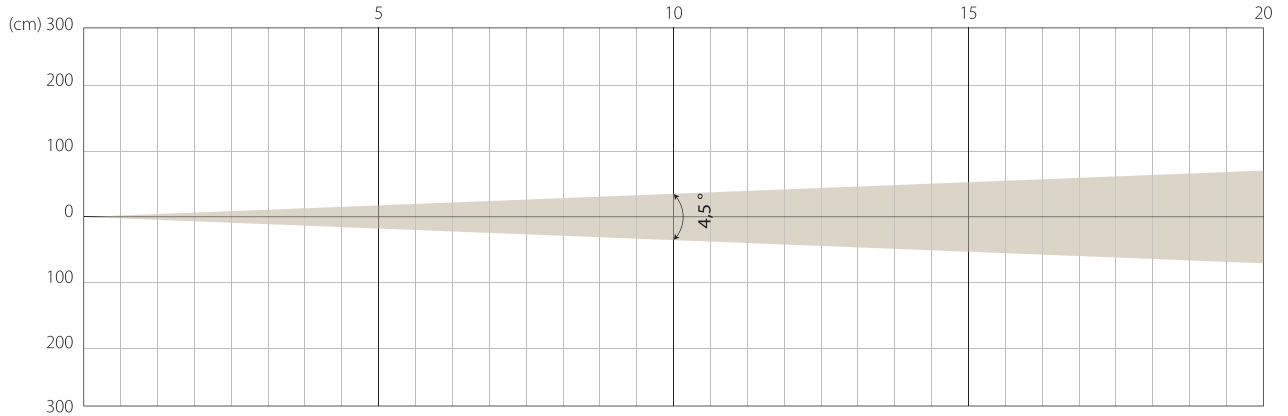
Note: Measurement done with Goniometer

# STAGE MODE

NATIVE CRI GREATER THAN 90

MIN ZOOM

## Beam Opening

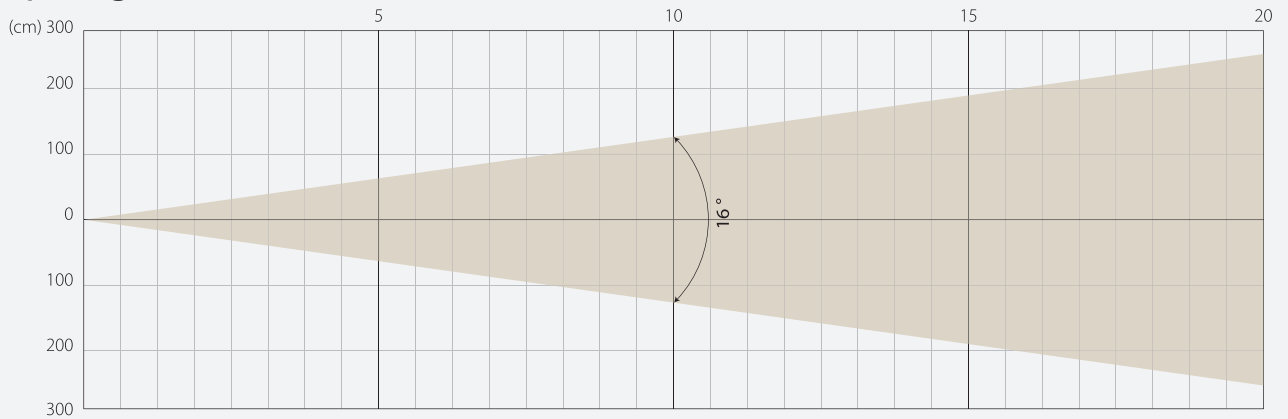


## Intensity

Distance (m)	5		10		15		20	
unit	lux	diameter	lux	diameter	lux	diameter	lux	diameter
White	71969	0,39	17992	0,79	7997	1,18	4498	1,57

MIDDLE ZOOM

## Beam Opening

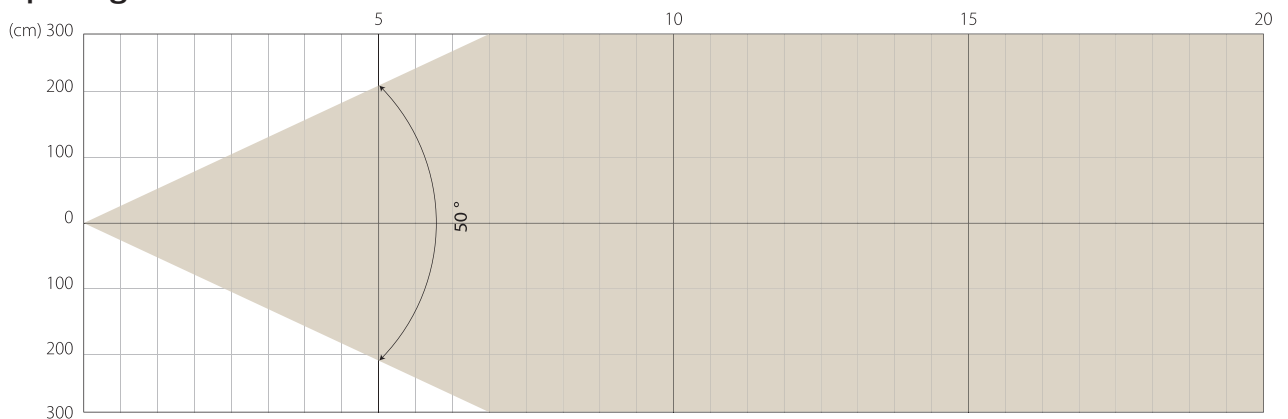


## Intensity

Distance (m)	5		10		15		20	
unit	lux	diameter	lux	diameter	lux	diameter	lux	diameter
White	11707	1,41	2927	2,81	1301	4,22	732	5,62

MAX ZOOM

## Beam Opening



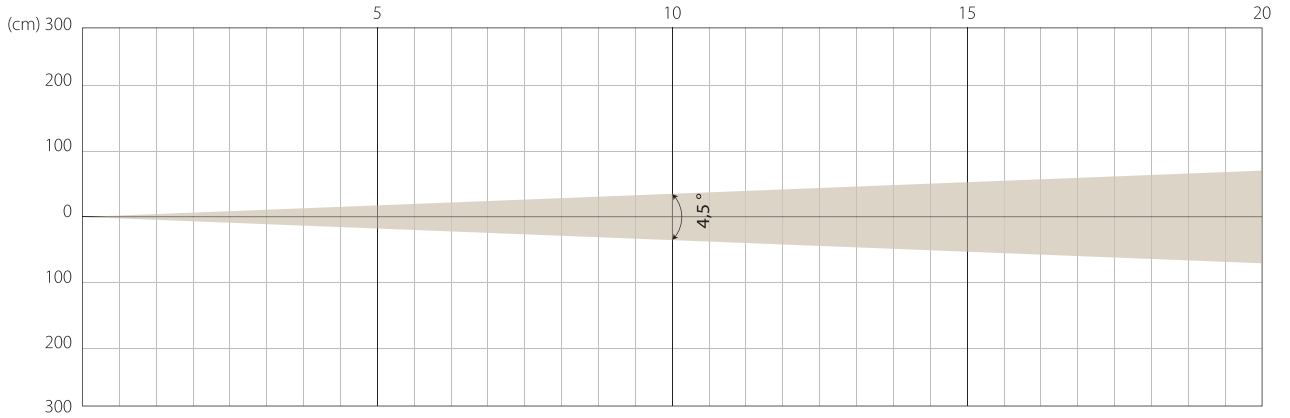
## Intensity

Distance (m)	5		10		15		20	
unit	lux	diameter	lux	diameter	lux	diameter	lux	diameter
White	1466	4,66	367	9,33	163	13,99	92	18,65

Note: Measurement done with Goniometer

MIN ZOOM

### Beam Opening

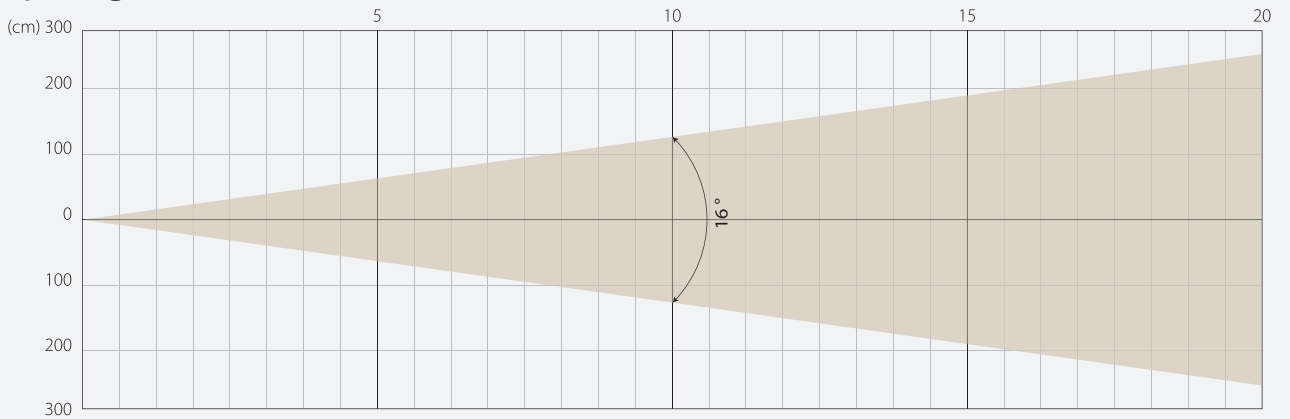


### Intensity

Distance (m)	5		10		15		20	
unit	lux	diameter	lux	diameter	lux	diameter	lux	diameter
White	48213	0,39	12053	0,79	5357	1,18	3013	1,57

MIDDLE ZOOM

### Beam Opening

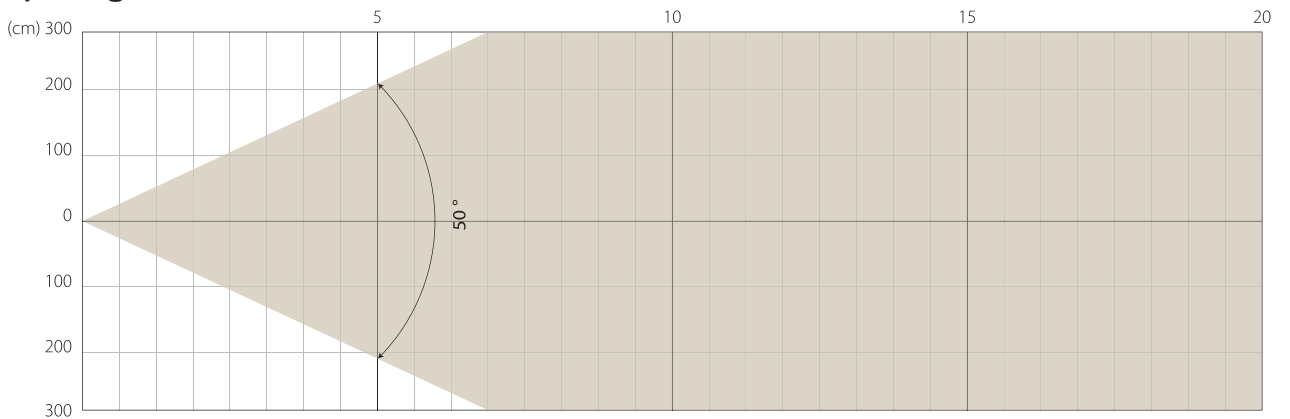


### Intensity

Distance (m)	5		10		15		20	
unit	lux	diameter	lux	diameter	lux	diameter	lux	diameter
White	8334	1,41	2084	2,81	926	4,22	521	5,62

MAX ZOOM

### Beam Opening



### Intensity

Distance (m)	5		10		15		20	
unit	lux	diameter	lux	diameter	lux	diameter	lux	diameter
White	1043	4,66	261	9,33	116	13,99	65	18,65

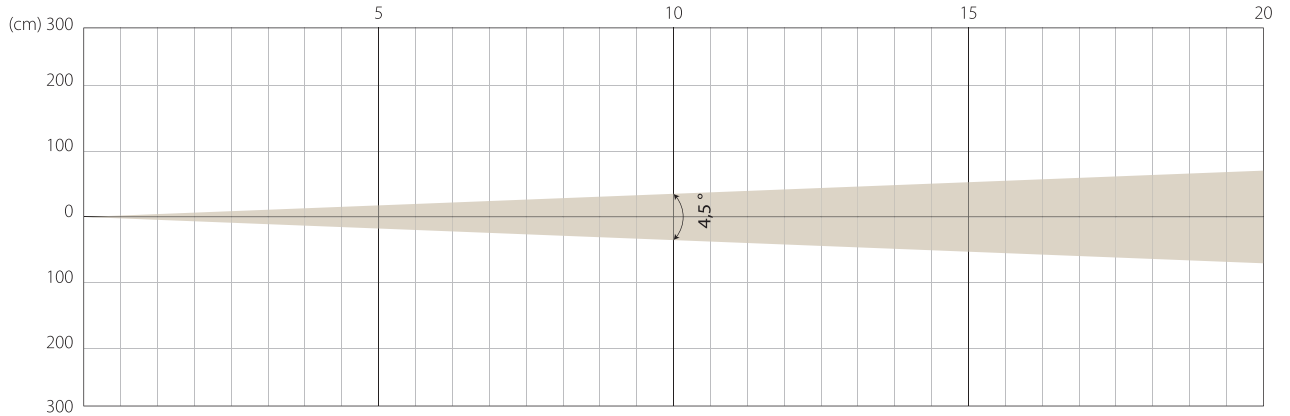
Note: Measurement done with Goniometer

# SUPER SILENCE MODE

NATIVE CRI GREATER THAN 90

MIN ZOOM

## Beam Opening

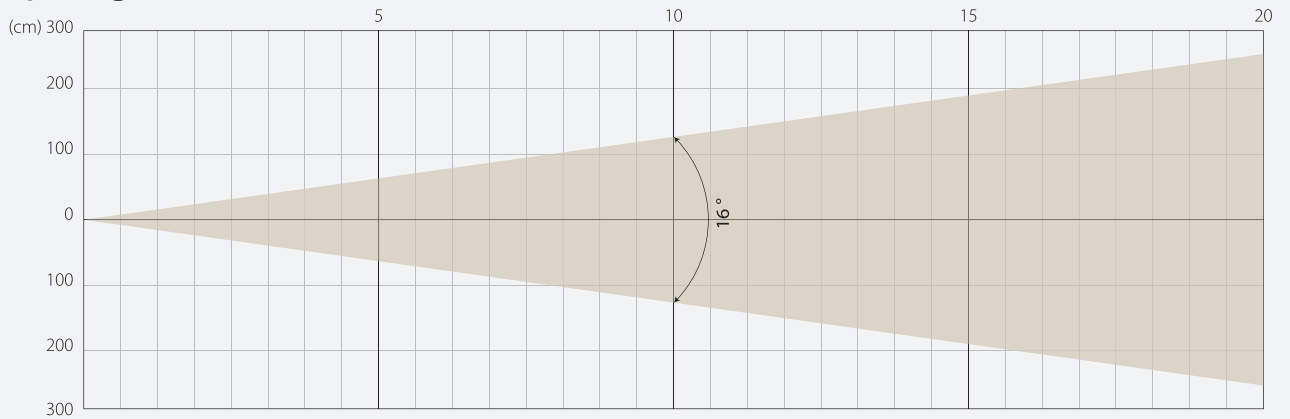


## Intensity

Distance (m)	5		10		15		20	
unit	lux	diameter	lux	diameter	lux	diameter	lux	diameter
White	31781	0,39	7945	0,79	3531	1,18	1986	1,57

MIDDLE ZOOM

## Beam Opening

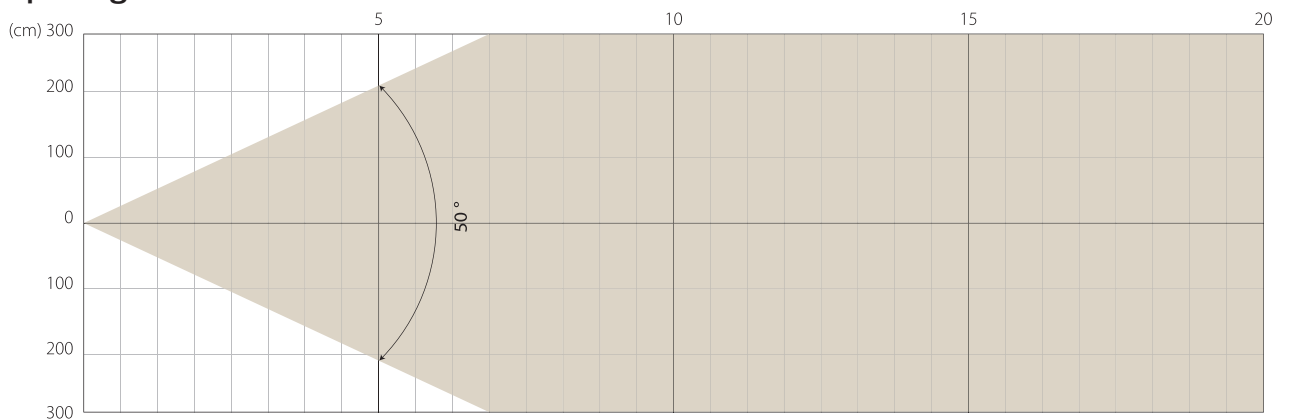


## Intensity

Distance (m)	5		10		15		20	
unit	lux	diameter	lux	diameter	lux	diameter	lux	diameter
White	5248	1,41	1312	2,81	583	4,22	328	5,62

MAX ZOOM

## Beam Opening

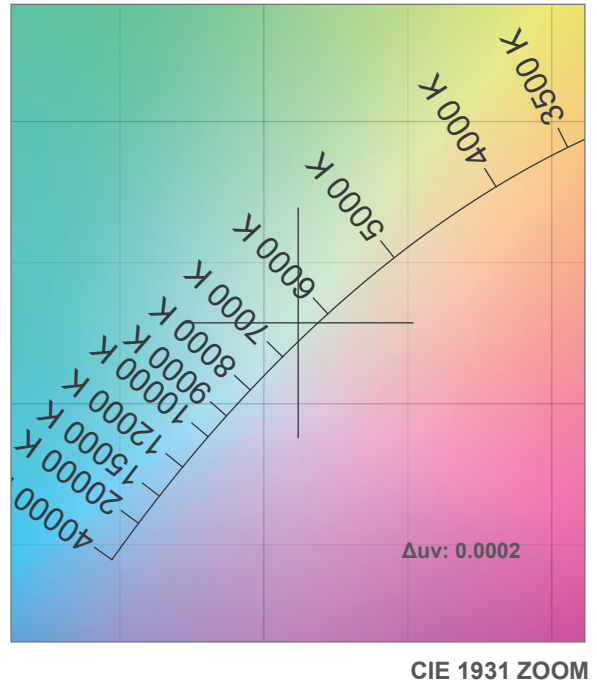
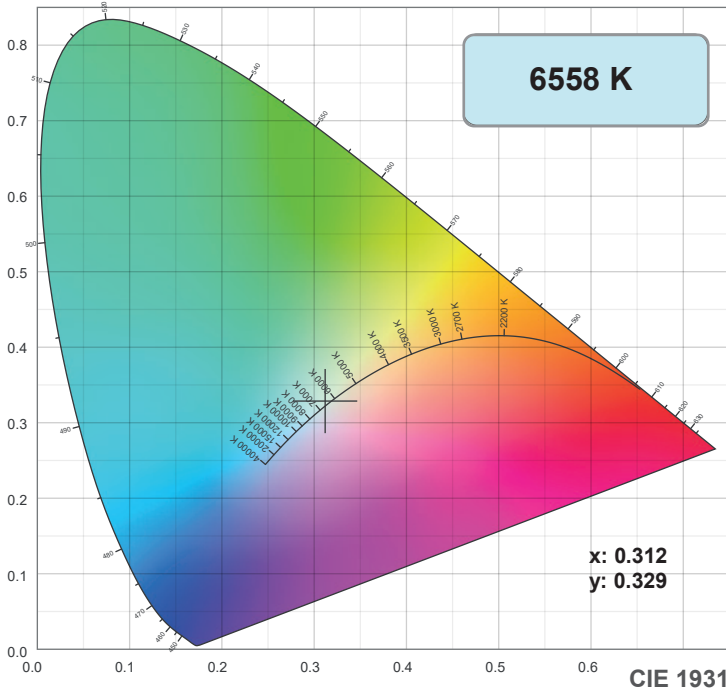


## Intensity

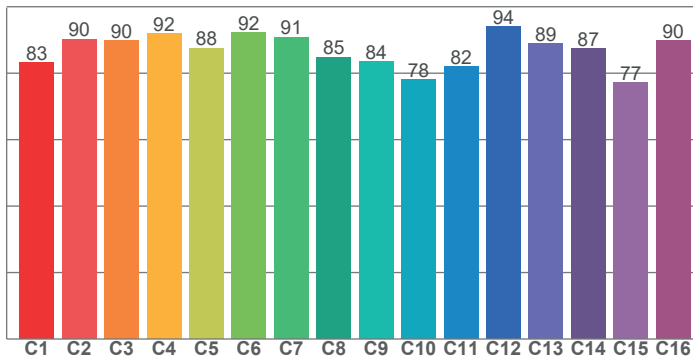
Distance (m)	5		10		15		20	
unit	lux	diameter	lux	diameter	lux	diameter	lux	diameter
White	668	4,66	167	9,33	74	13,99	42	18,65

Note: Measurement done with Goniometer

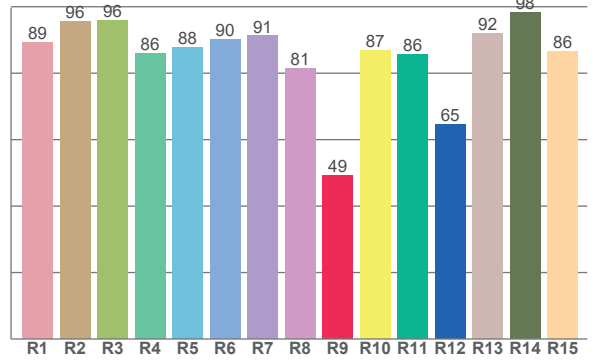
# COLOR DETAILS



**TM-30: 86.8**



**CRI: 89.6 (R1-R8)**



CRI R values, only R1-R8 are used to calculate final CRI value

R1	R2	R3	R4	R5	R6	R7	R8	R9	R10	R11	R12	R13	R14	R15
89.3	95.5	95.9	85.9	87.7	90.0	91.2	81.3	49.1	87.0	85.7	64.6	92.0	98.3	86.5

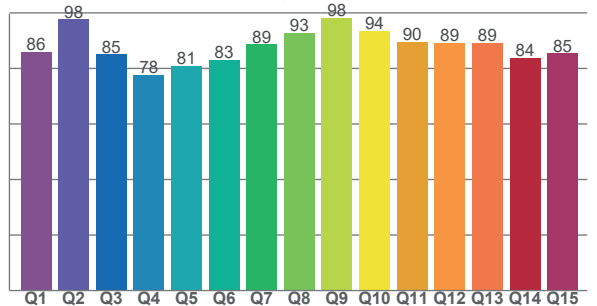
TM30 C values, 16 binned values out of total of 99 C values

C1	C2	C3	C4	C5	C6	C7	C8	C9	C10	C11	C12	C13	C14	C15	C16
83.3	90.3	89.9	91.9	87.6	92.3	90.9	84.9	83.6	78.1	82.1	94.0	88.8	87.4	77.1	89.8

CQS Q values

Q1	Q2	Q3	Q4	Q5	Q6	Q7	Q8	Q9	Q10	Q11	Q12	Q13	Q14	Q15
86.1	97.6	85.0	77.5	81.0	83.1	88.6	92.7	98.2	93.6	89.6	89.1	89.1	83.7	85.4

**CQS: 86.8**



## Color parameters

Color temperature	Color rendering index	Red component	Color fidelity	Color gamut	Color quality scale	Color coordinate cie 1931	Color coordinate cie 1931	Color coordinate	Color coordinate	Color deviation from black body
CCT	CRI	CRI R9	TM30 Rf	TM30 Rg	CQS	x	y	u	v	Δuv
6558 K	89.6	49.1	86.8	94.2	86.8	0.312	0.329	0.197	0.312	0.0002

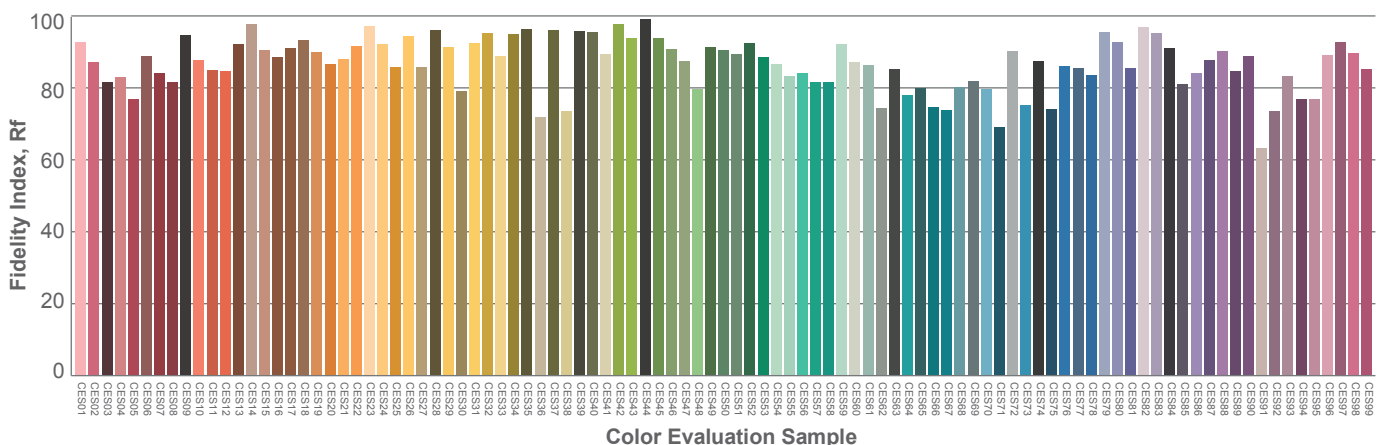
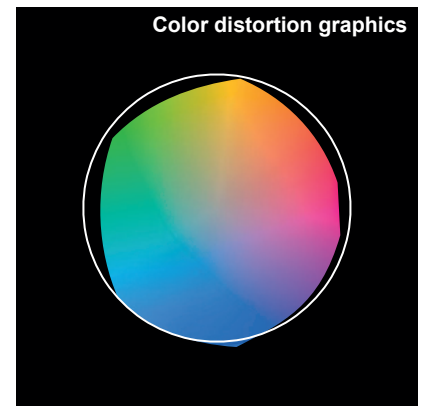
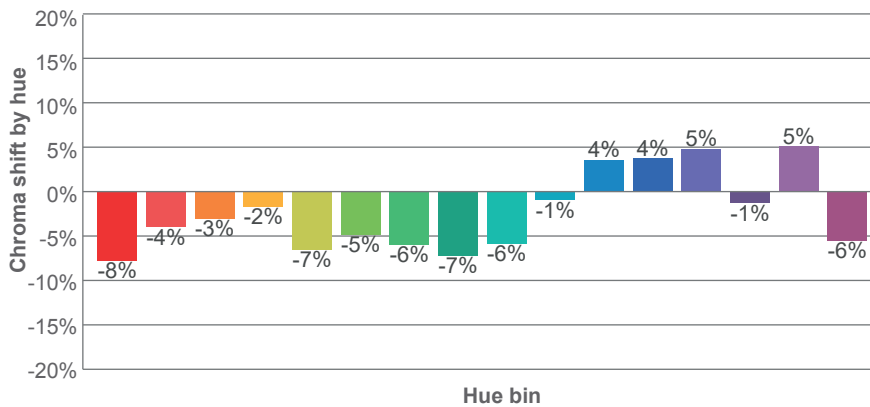
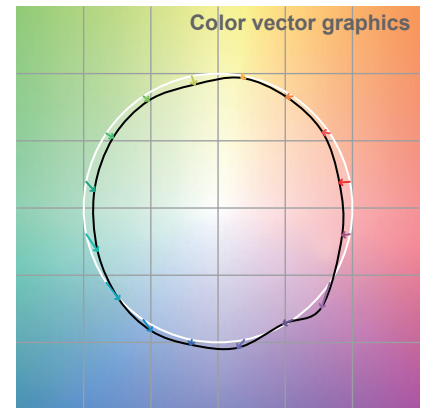
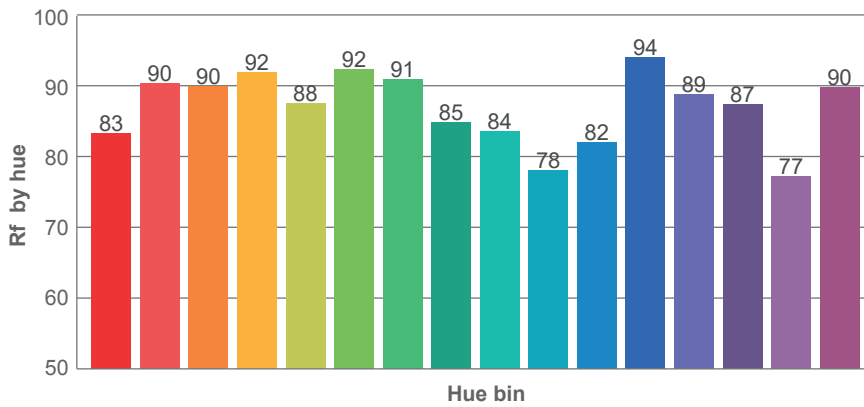
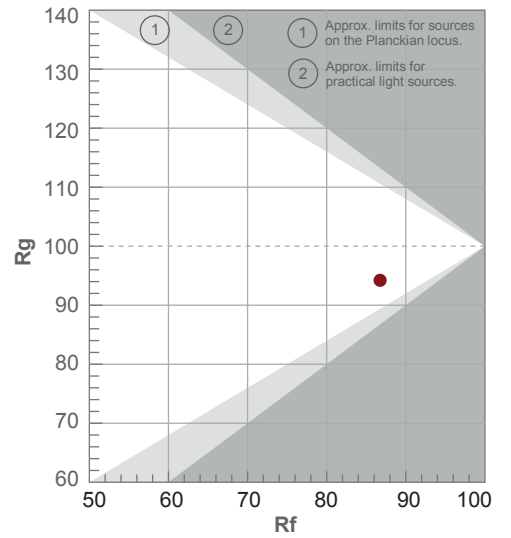


# TM-30 DETAILS

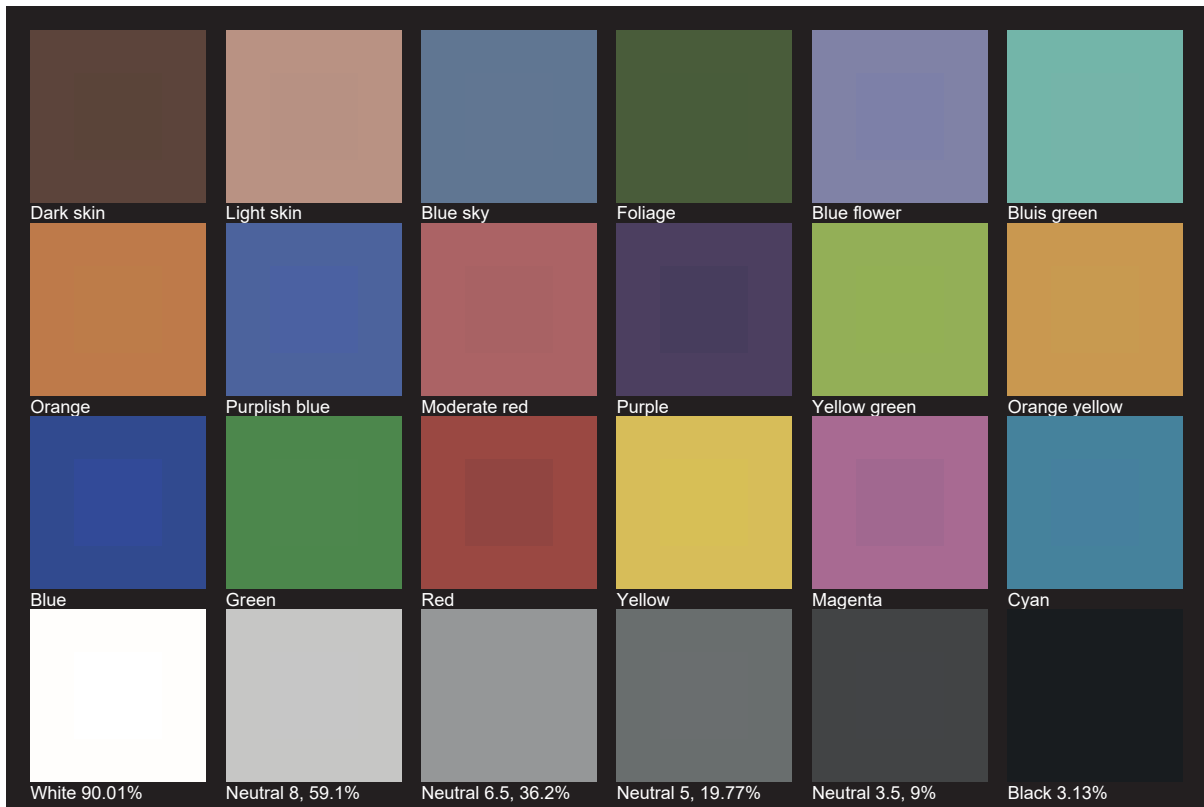
**Rf 86.8**  
Fidelity index Rf

**Rg 94.2**  
Gamut index Rg

Hue Bin	R <sub>f</sub>	Shifts (%)	
		Chroma	Hue
1	83	-8%	1%
2	90	-4%	4%
3	90	-3%	4%
4	92	-2%	2%
5	88	-7%	-1%
6	92	-5%	-1%
7	91	-6%	0%
8	85	-7%	5%
9	84	-6%	14%
10	78	-1%	16%
11	82	4%	10%
12	94	4%	0%
13	89	5%	-6%
14	87	-1%	-8%
15	77	5%	-19%
16	90	-6%	-2%



# TLCI 88







**AYRTON**

Digital Lighting