



DOMINO WASH S

PHOTOMETRY



AYRTON
Digital Lighting



Total Flux	52000 lm (@zoom 128, fan mode STAGE, Sphere)
-------------------	--

CCT @LED engin	8000 (±400K)
CCT @open	7000 (±500K)
Ra @open	72 (±2)
TLCI	50
TM-30	Rf: 72.6 Rg: 93.8

Fan Mode	Noise Level (dBA)	by Goniometer (lm)	by Sphere (lm)
Auto	47,8	39815	50963
Stage	50,3	40396	51707
Silence	39,3	28109	35980
Super Silence	34,2	17181	21992

Note: noise measured @1m distance, static status, ambient 31 dBA.

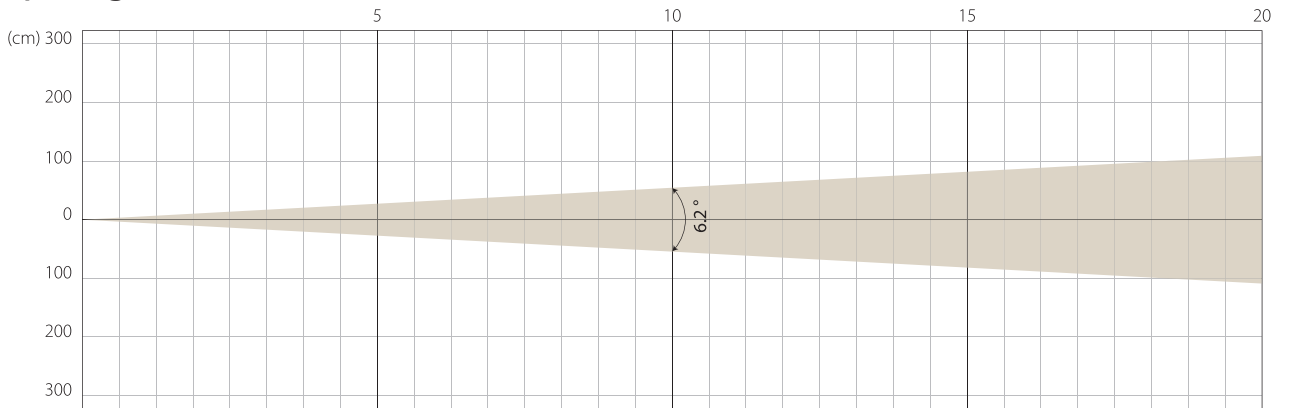
Voltage / Power	100-240V, 50-60Hz	1600 W
Fixture Dimension / Weight	490 x 821 x 330 mm	52 kg
Packing Dimension / Weight	730 x 570 x 765 mm	71 kg

AUTO MODE

NATIVE CRI GREATER THAN 70

MIN ZOOM

Beam Opening

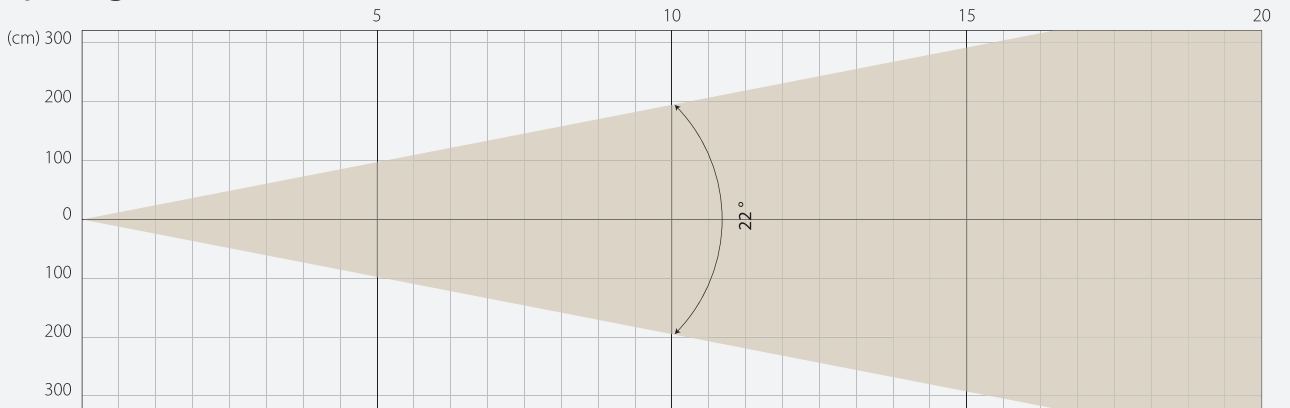


Intensity

Distance (m)	5		10		15		20	
unit	lux	diameter	lux	diameter	lux	diameter	lux	diameter
White	103726	0,54	25931	1,08	11525	1,62	6483	2,17

MIDDLE ZOOM

Beam Opening

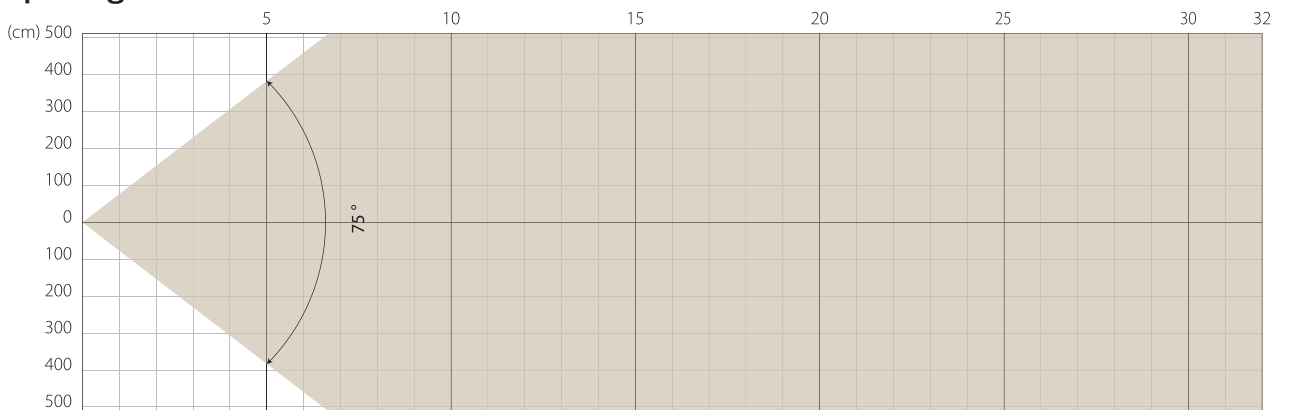


Intensity

Distance (m)	5		10		15		20	
unit	lux	diameter	lux	diameter	lux	diameter	lux	diameter
White	13003	1,94	3251	3,89	1445	5,83	813	7,78

MAX ZOOM

Beam Opening



Intensity

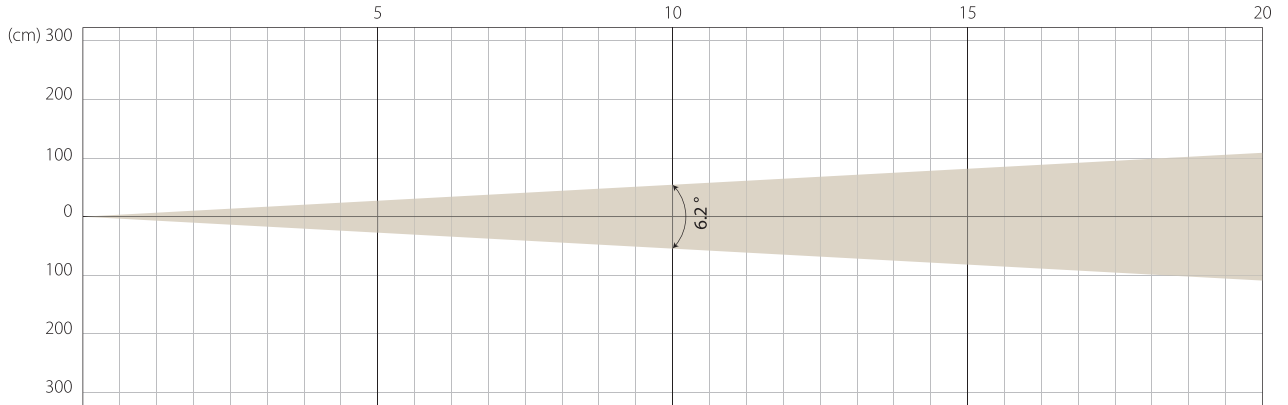
Distance (m)	5		10		15		20	
unit	lux	diameter	lux	diameter	lux	diameter	lux	diameter
White	2114	7,67	528	15,35	235	23,02	132	30,69

STAGE MODE

NATIVE CRI GREATER THAN 70

MIN ZOOM

Beam Opening

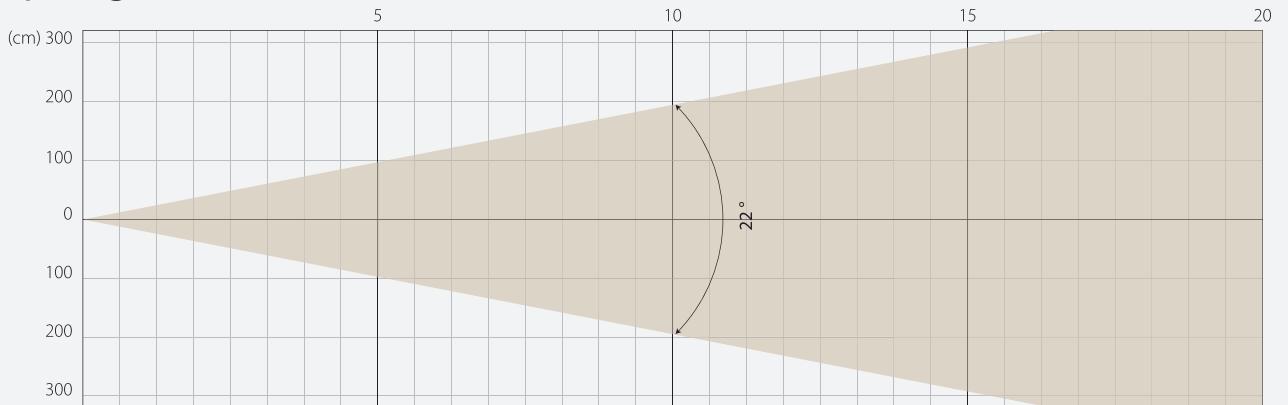


Intensity

Distance (m)	5		10		15		20	
	lux	diameter	lux	diameter	lux	diameter	lux	diameter
White	107515	0,54	26879	1,08	11946	1,62	6720	2,17

MIDDLE ZOOM

Beam Opening

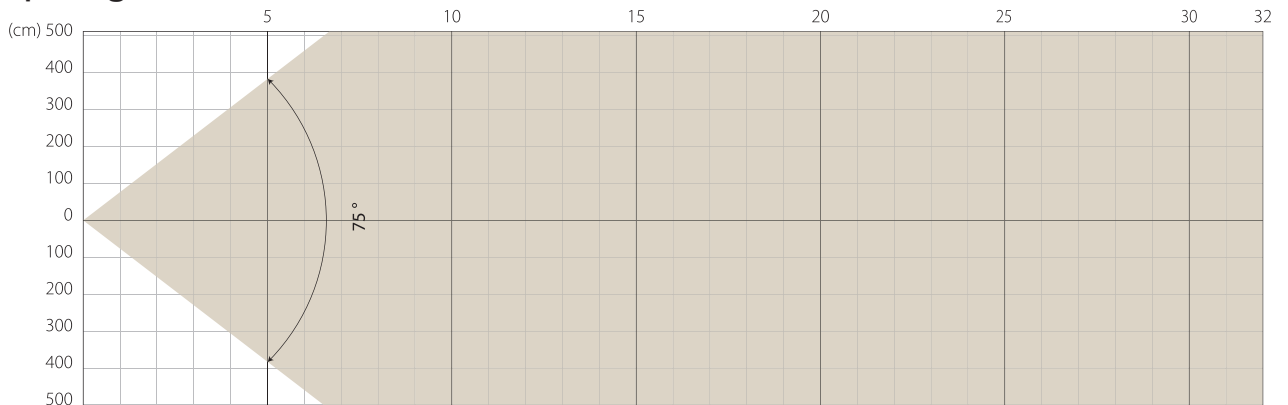


Intensity

Distance (m)	5		10		15		20	
	lux	diameter	lux	diameter	lux	diameter	lux	diameter
White	13241	1,94	3310	3,89	1471	5,83	828	7,78

MAX ZOOM

Beam Opening



Intensity

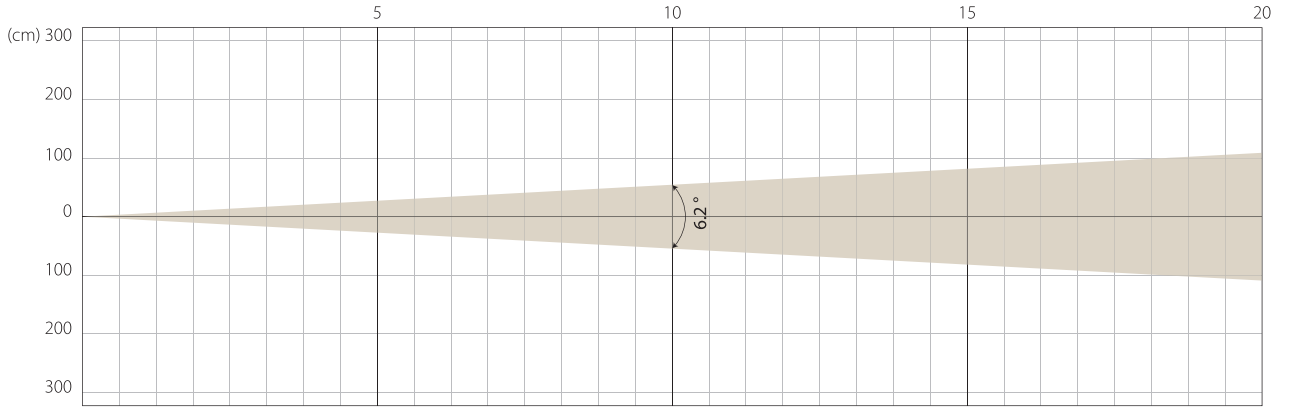
Distance (m)	5		10		15		20	
	lux	diameter	lux	diameter	lux	diameter	lux	diameter
White	2201	7,67	550	15,35	245	23,02	138	30,69

SILENCE MODE

NATIVE CRI GREATER THAN 70

MIN ZOOM

Beam Opening

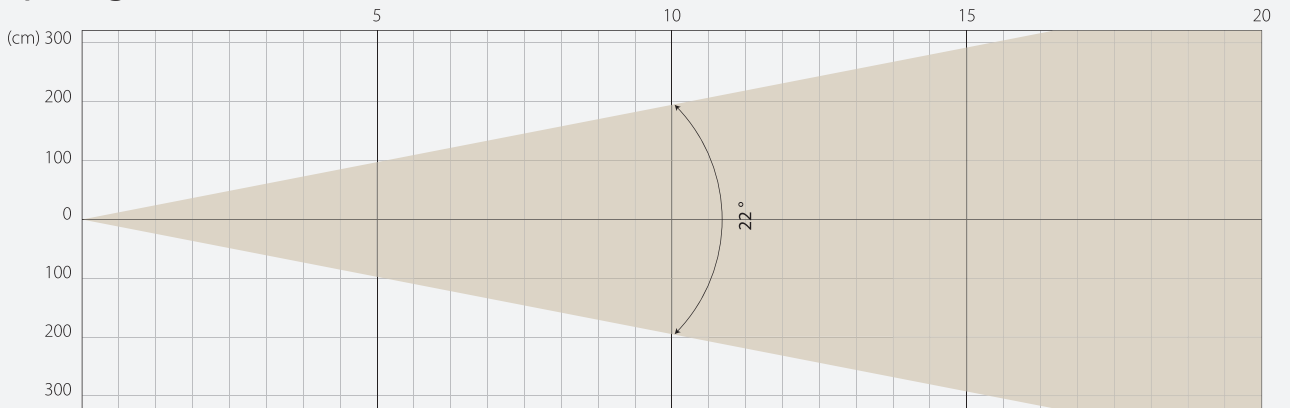


Intensity

Distance (m)	5		10		15		20	
unit	lux	diameter	lux	diameter	lux	diameter	lux	diameter
White	73706	0,54	18426	1,08	8190	1,62	4607	2,17

MIDDLE ZOOM

Beam Opening

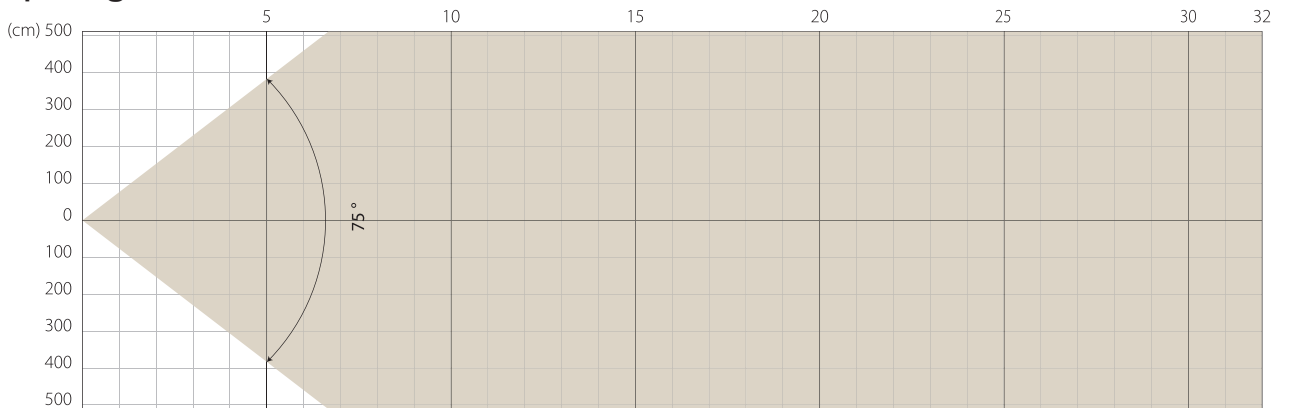


Intensity

Distance (m)	5		10		15		20	
unit	lux	diameter	lux	diameter	lux	diameter	lux	diameter
White	9022	1,94	2256	3,89	1002	5,83	564	7,78

MAX ZOOM

Beam Opening



Intensity

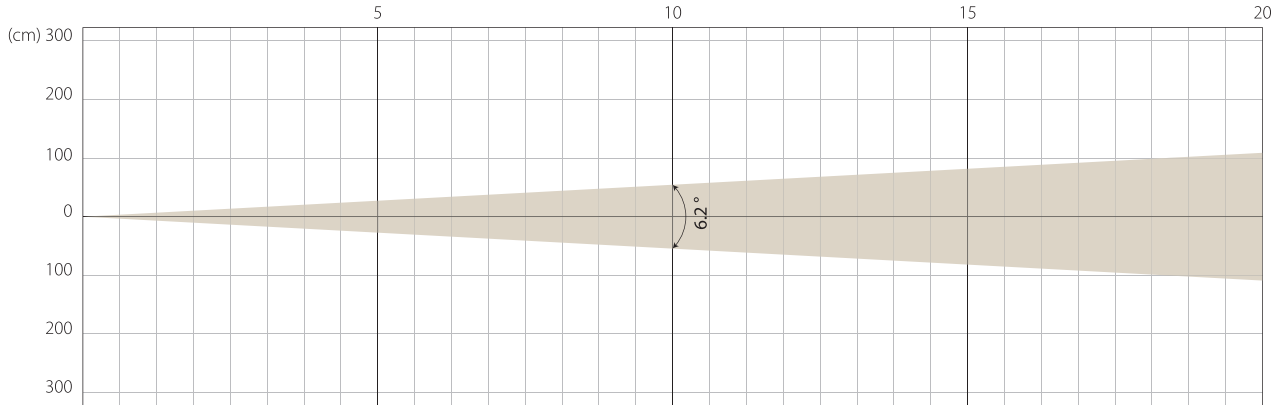
Distance (m)	5		10		15		20	
unit	lux	diameter	lux	diameter	lux	diameter	lux	diameter
White	1537	7,67	384	15,35	171	23,02	96	30,69

SUPER SILENCE MODE

NATIVE CRI GREATER THAN 70

MIN ZOOM

Beam Opening

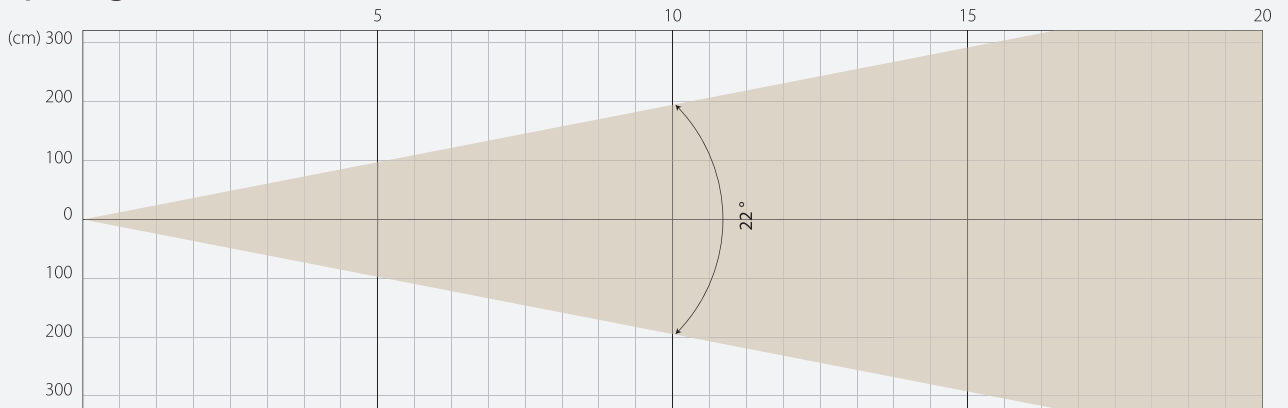


Intensity

Distance (m)	5		10		15		20	
	lux	diameter	lux	diameter	lux	diameter	lux	diameter
White	43034	0,54	10759	1,08	4782	1,62	2690	2,17

MIDDLE ZOOM

Beam Opening

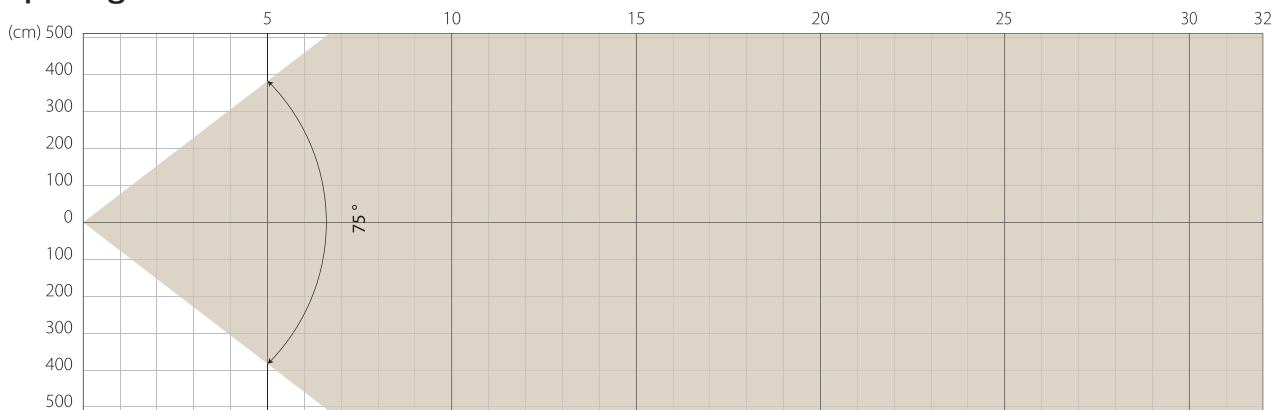


Intensity

Distance (m)	5		10		15		20	
	lux	diameter	lux	diameter	lux	diameter	lux	diameter
White	5351	1,94	1338	3,89	595	5,83	334	7,78

MAX ZOOM

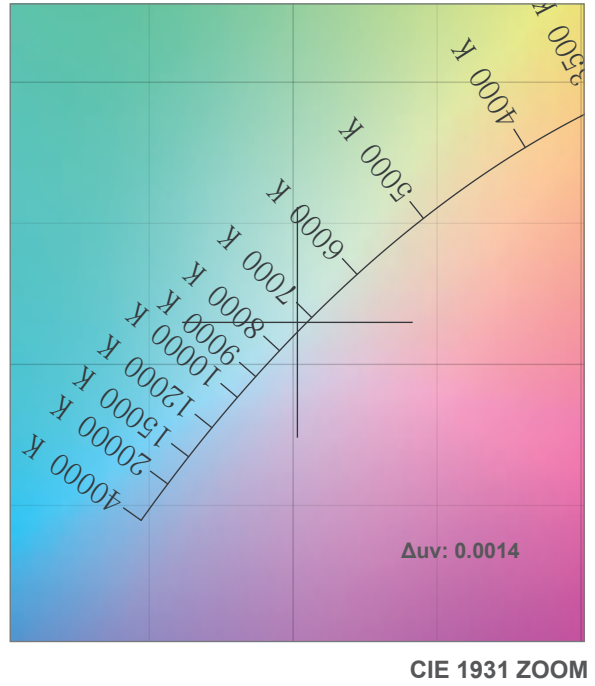
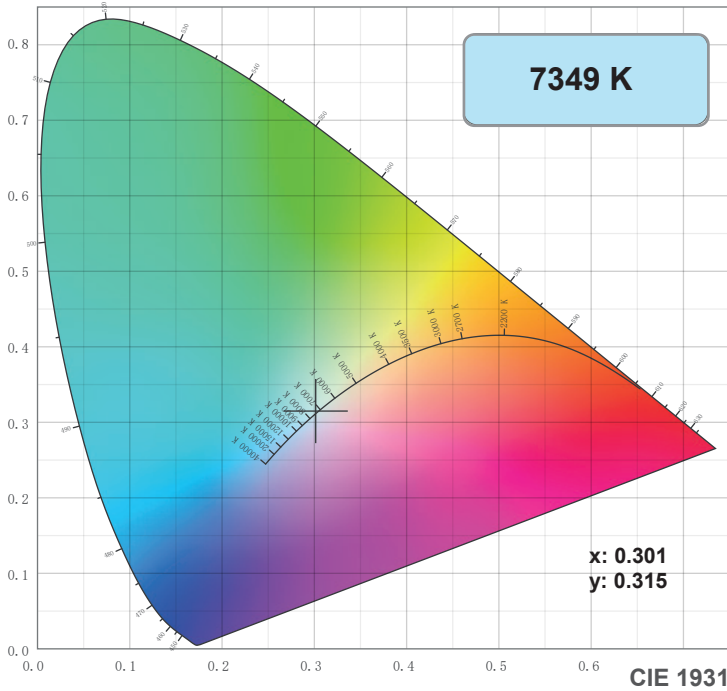
Beam Opening



Intensity

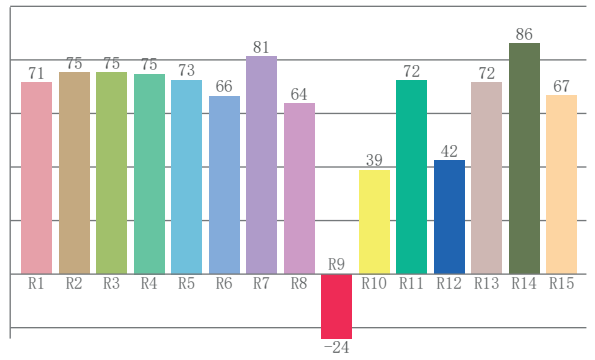
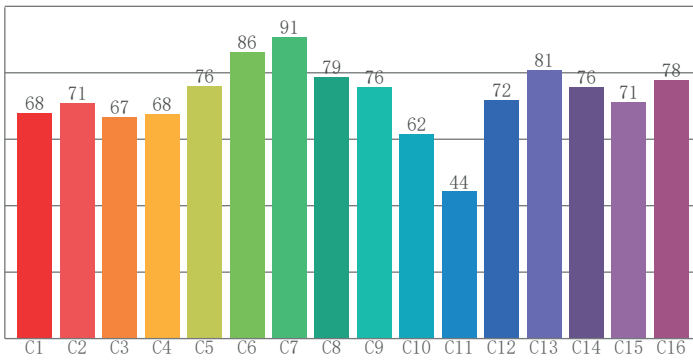
Distance (m)	5		10		15		20	
	lux	diameter	lux	diameter	lux	diameter	lux	diameter
White	880	7,67	220	15,35	98	23,02	55	30,69

COLOR DETAILS



TM-30: 72.6

CRI: 72.6 (R1-R8)



CRI R values, only R1-R8 are used to calculate final CRI value

R1	R2	R3	R4	R5	R6	R7	R8	R9	R10	R11	R12	R13	R14	R15
71.4	75.3	75.3	74.7	72.5	66.4	81.2	63.8	-24.1	38.9	72.4	42.4	71.6	86.0	66.7

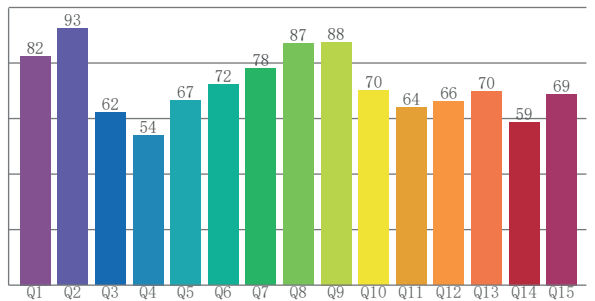
TM30 C values, 16 binned values out of total of 99 C values

C1	C2	C3	C4	C5	C6	C7	C8	C9	C10	C11	C12	C13	C14	C15	C16
67.9	70.8	66.6	67.6	76.0	86.3	90.7	78.6	75.7	61.6	44.3	71.7	80.8	75.6	71.3	77.9

CQS Q values

Q1	Q2	Q3	Q4	Q5	Q6	Q7	Q8	Q9	Q10	Q11	Q12	Q13	Q14	Q15
82.5	92.5	62.3	54.1	66.6	72.3	78.1	87.0	87.5	70.2	63.9	66.2	69.8	58.8	68.8

CQS: 70.0



Color parameters

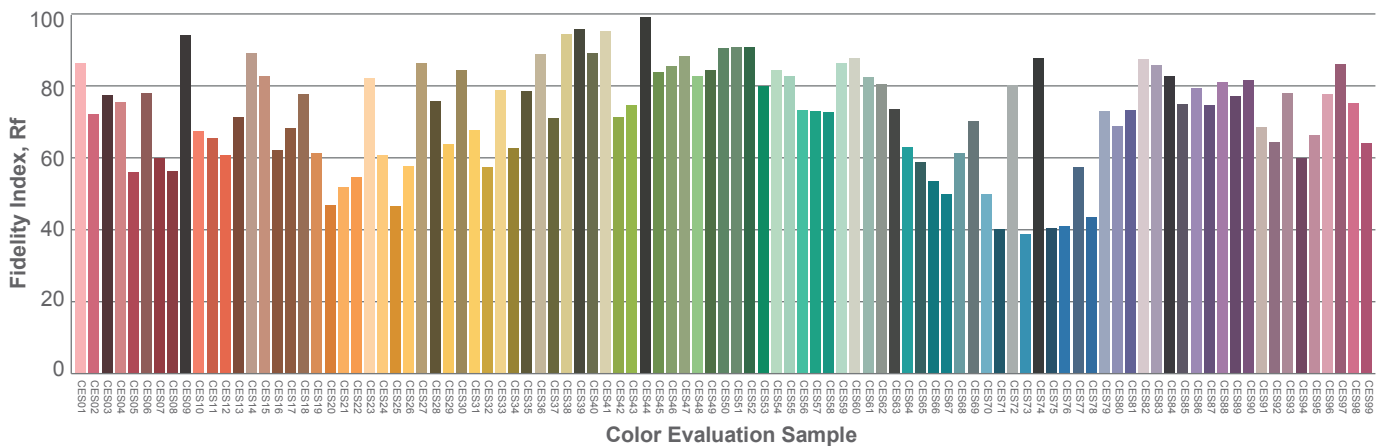
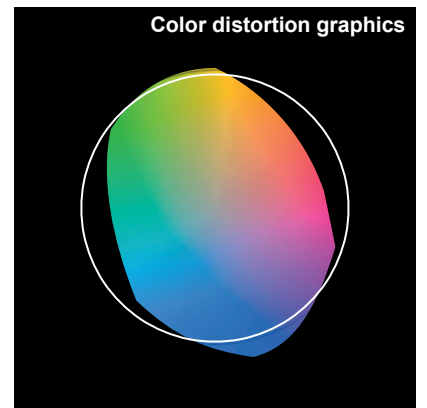
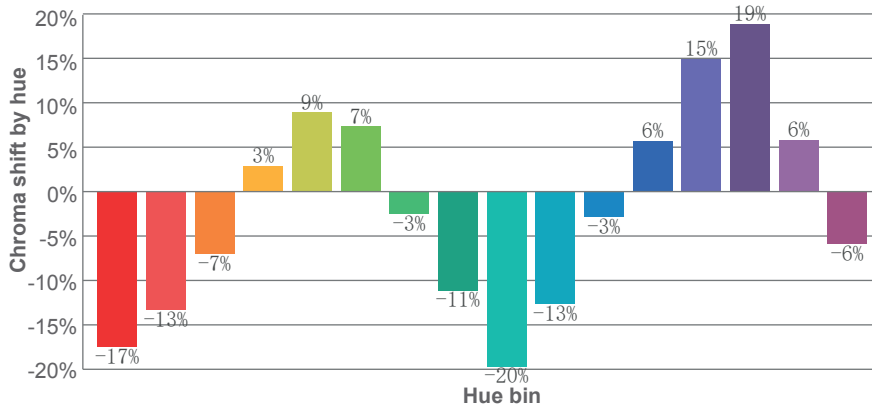
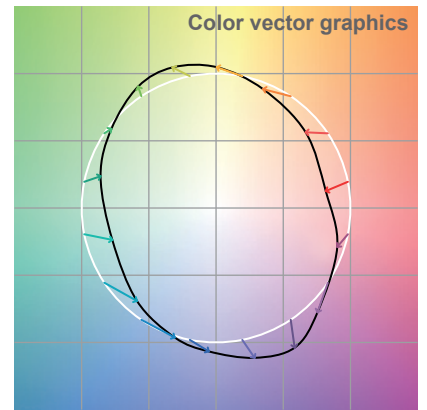
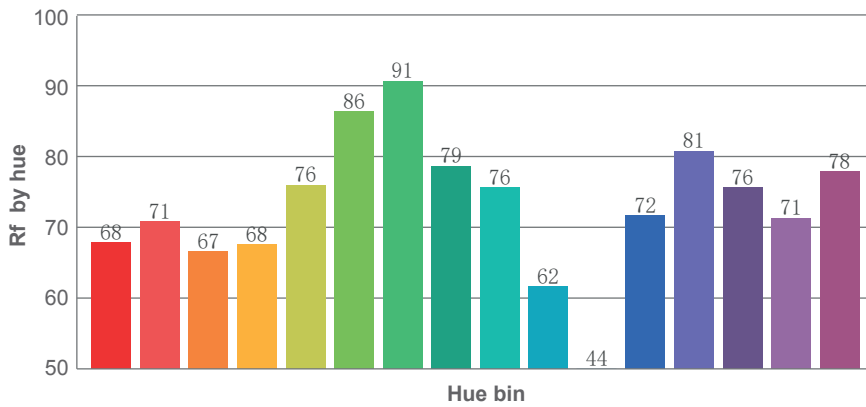
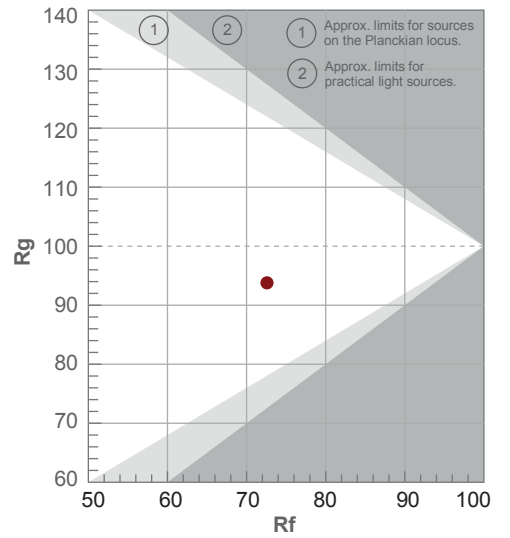
Color temperature	Color rendering index	Red component	Color fidelity	Color gamut	Color quality scale	Color coordinate cie 1931	Color coordinate cie 1931	Color coordinate	Color coordinate	Color deviation from black body
CCT	CRI	CRI R9	TM30 Rf	TM30 Rg	CQS	x	y	u	v	Δuv
7349 K	72.6	-24.1	72.6	93.8	70.0	0.301	0.315	0.195	0.306	0.0014

TM-30 DETAILS

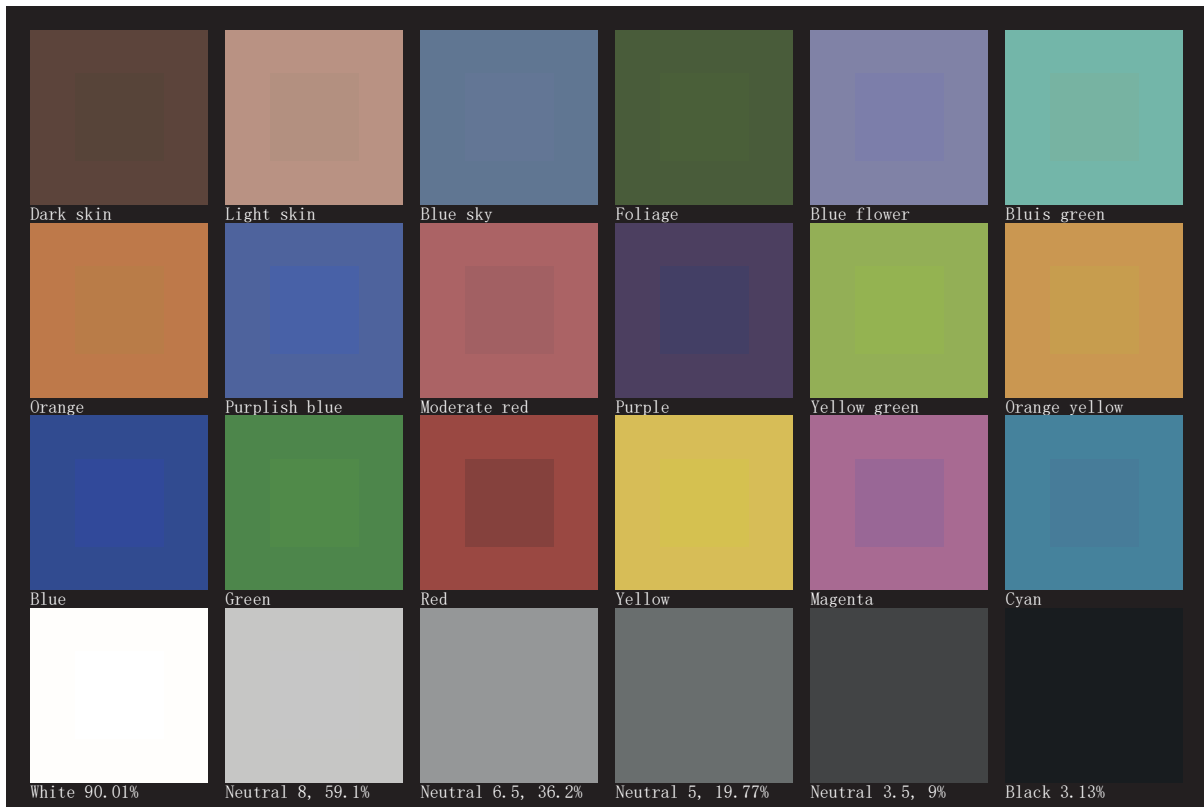
Rf 72.6
Fidelity index Rf

Rg 93.8
Gamut index Rg

Hue Bin	R _f	Shifts (%)	
		Chroma	Hue
1	68	-17%	-4%
2	71	-13%	10%
3	67	-7%	20%
4	68	3%	20%
5	76	9%	11%
6	86	7%	-2%
7	91	-3%	-6%
8	79	-11%	-6%
9	76	-20%	8%
10	62	-13%	25%
11	44	-3%	28%
12	72	6%	15%
13	81	15%	6%
14	76	19%	-9%
15	71	6%	-23%
16	78	-6%	-11%



TLCI 50





AYRTON

Digital Lighting