



DOMINO WASH ST

PHOTOMETRY



AYRTON
Digital Lighting



Total Flux	45000 lm (@zoom 128, fan mode STAGE, Sphere)
-------------------	--

CCT @LED engin	6000 (±400K)
CCT @open	5800 (±400K)
Ra @open	80 (±2)
TLCI	64
TM-30	Rf: 81.3 Rg: 93.0

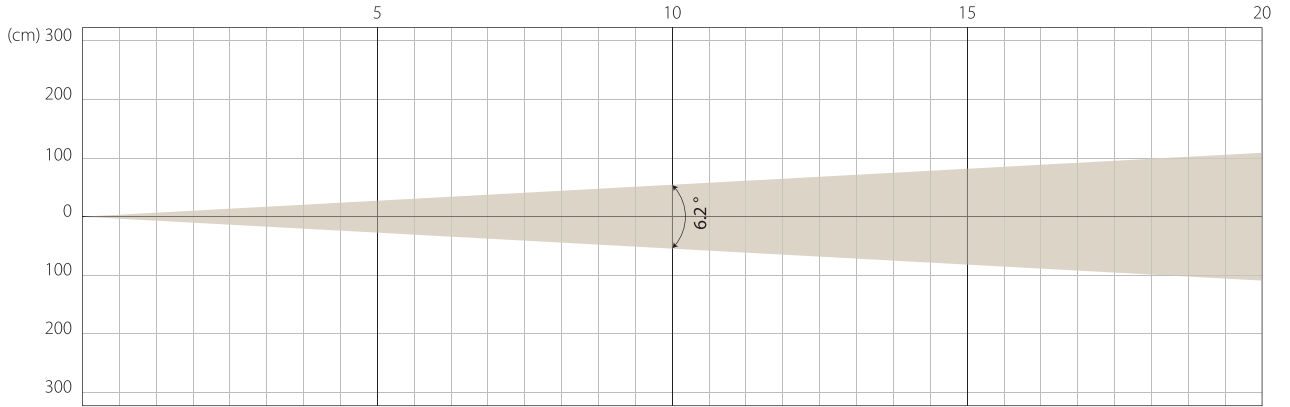
Fan Mode	Noise Level (dBA)	by Goniometer (lm)	by Sphere (lm)
Auto	47,8	33917	43414
Stage	50,3	34738	44465
Silence	39,3	24331	31144
Super Silence	34,2	14556	18632

Note: noise measured @1m distance, static status, ambient 31 dBA.

Voltage / Power	100-240V, 50-60Hz	1600 W
Fixture Dimension / Weight	490 x 821 x 330 mm	52 kg
Packing Dimension / Weight	730 x 570 x 765 mm	71 kg

MIN ZOOM

Beam Opening

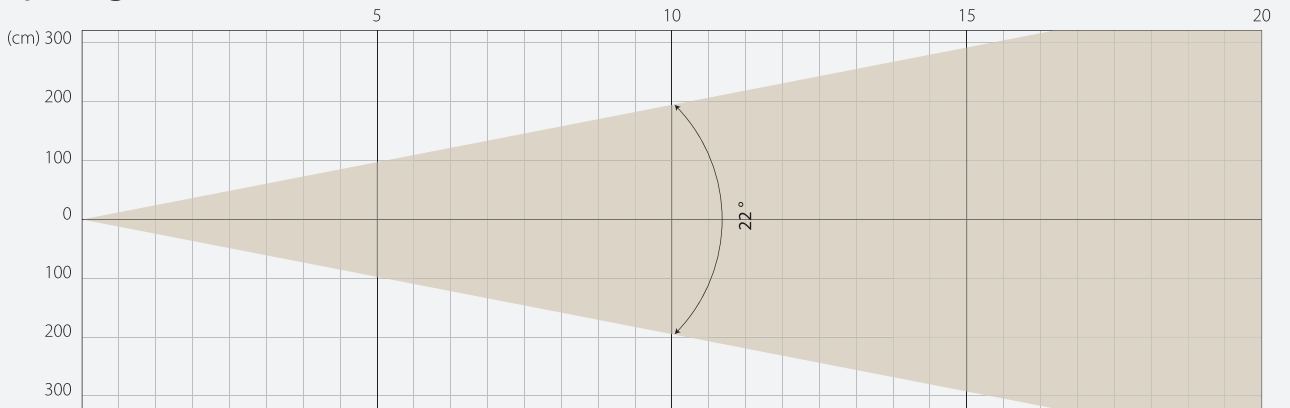


Intensity

Distance (m)	5		10		15		20	
	lux	diameter	lux	diameter	lux	diameter	lux	diameter
White	86994	0,54	21748	1,08	9666	1,62	5437	2,17

MIDDLE ZOOM

Beam Opening

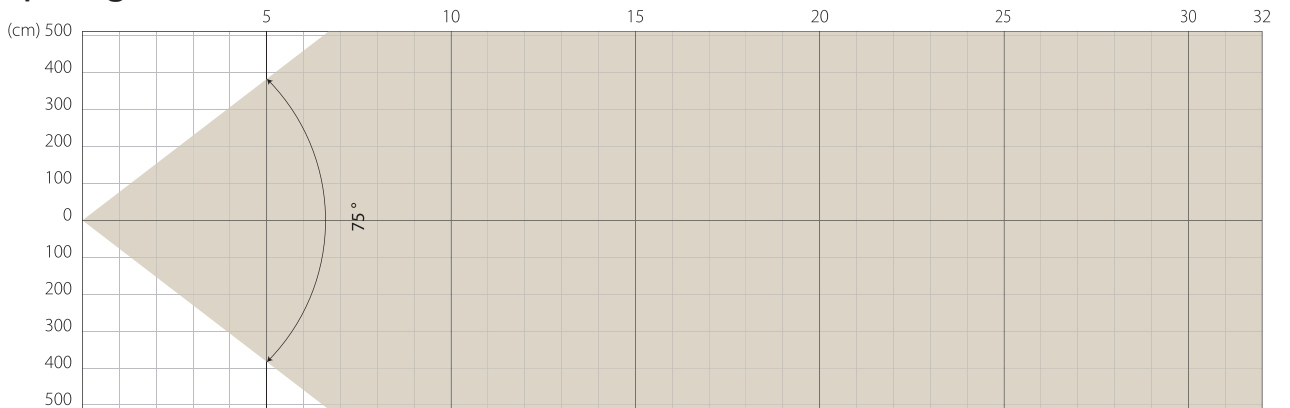


Intensity

Distance (m)	5		10		15		20	
	lux	diameter	lux	diameter	lux	diameter	lux	diameter
White	10809	1,94	2702	3,89	1201	5,83	676	7,78

MAX ZOOM

Beam Opening



Intensity

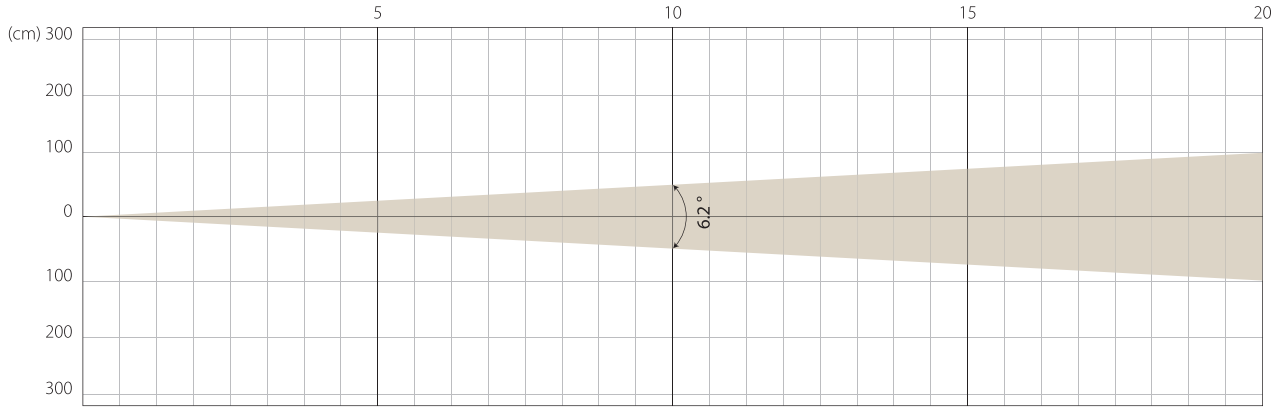
Distance (m)	5		10		15		20	
	lux	diameter	lux	diameter	lux	diameter	lux	diameter
White	1740	7,67	435	15,35	193	23,02	109	30,69

STAGE MODE

NATIVE CRI GREATER THAN 80

MIN ZOOM

Beam Opening

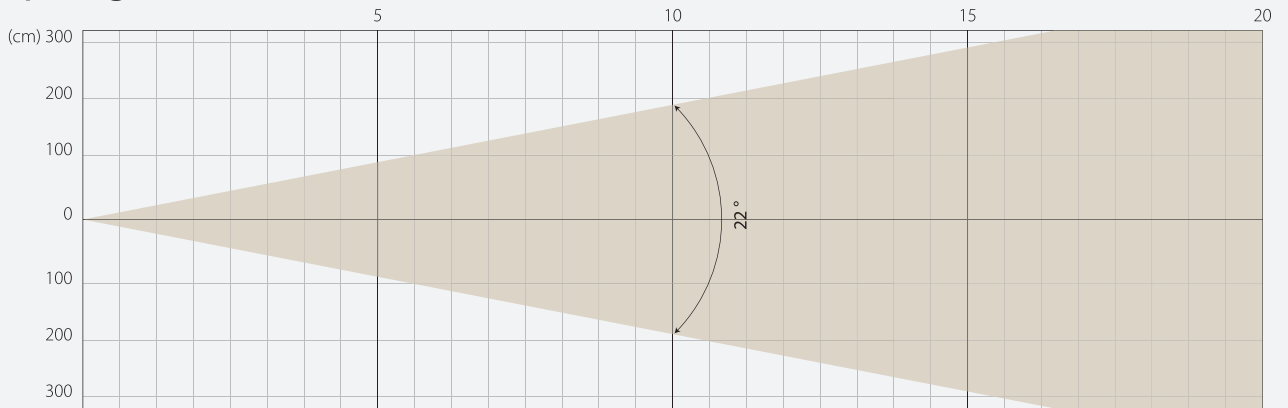


Intensity

Distance (m)	5		10		15		20	
	lux	diameter	lux	diameter	lux	diameter	lux	diameter
White	90401	0,54	22600	1,08	10045	1,62	5650	2,17

MIDDLE ZOOM

Beam Opening

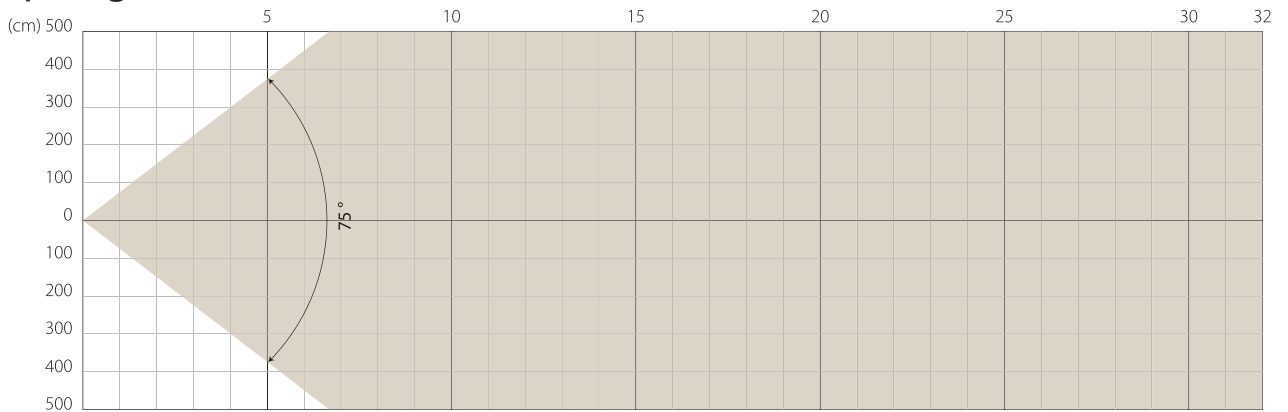


Intensity

Distance (m)	5		10		15		20	
	lux	diameter	lux	diameter	lux	diameter	lux	diameter
White	11047	1,94	2762	3,89	1227	5,83	690	7,78

MAX ZOOM

Beam Opening

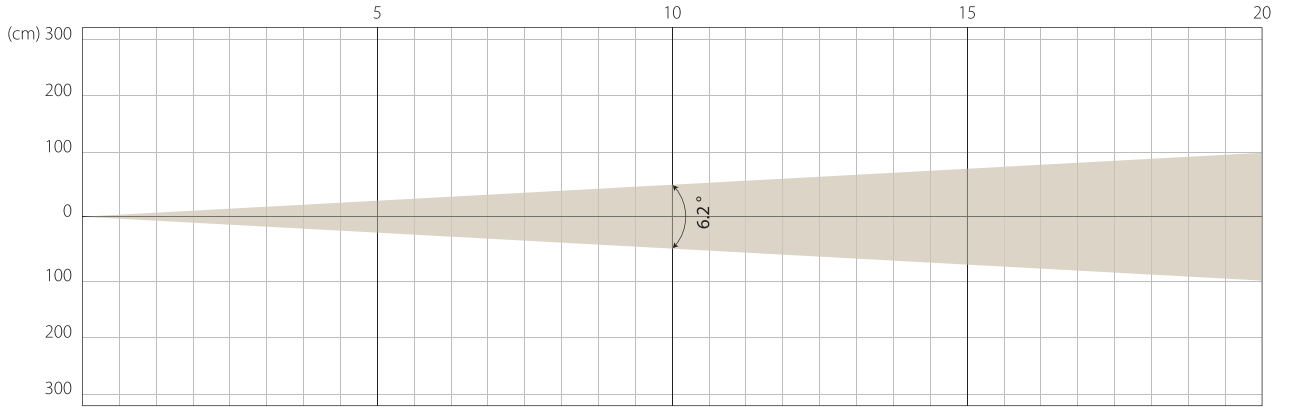


Intensity

Distance (m)	5		10		15		20	
	lux	diameter	lux	diameter	lux	diameter	lux	diameter
White	1822	7,67	455	15,35	202	23,02	114	30,69

MIN ZOOM

Beam Opening

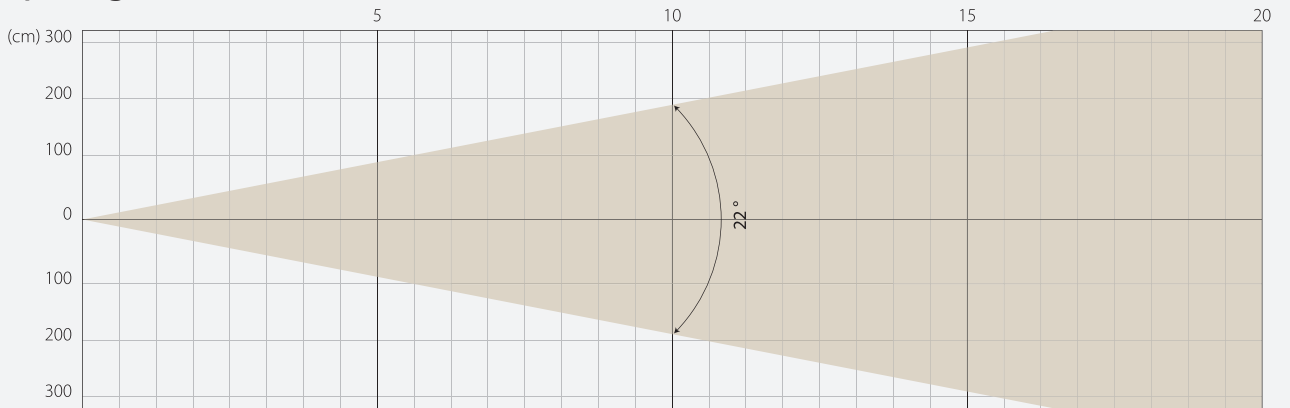


Intensity

Distance (m)	5		10		15		20	
unit	lux	diameter	lux	diameter	lux	diameter	lux	diameter
White	62312	0,54	15578	1,08	6924	1,62	3894	2,17

MIDDLE ZOOM

Beam Opening

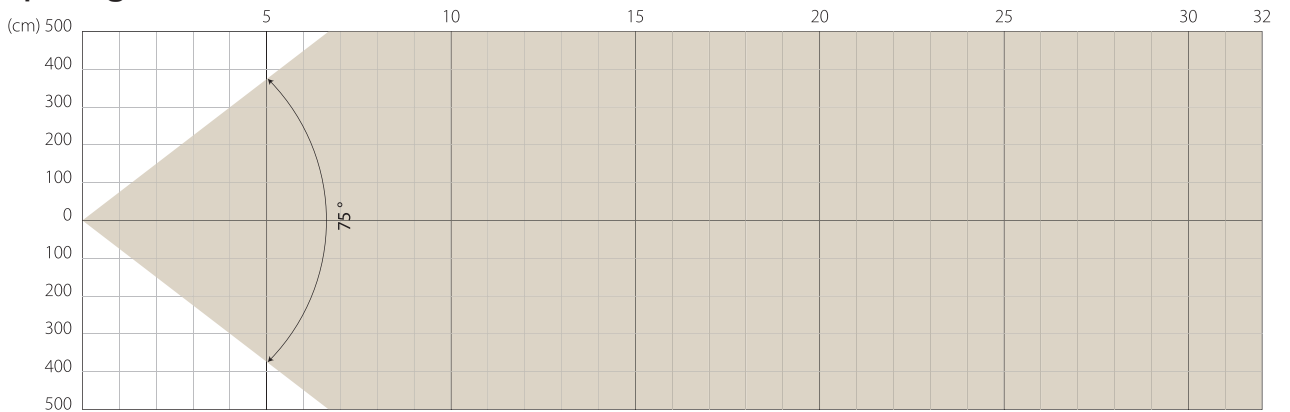


Intensity

Distance (m)	5		10		15		20	
unit	lux	diameter	lux	diameter	lux	diameter	lux	diameter
White	7523	1,94	1881	3,89	836	5,83	470	7,78

MAX ZOOM

Beam Opening



Intensity

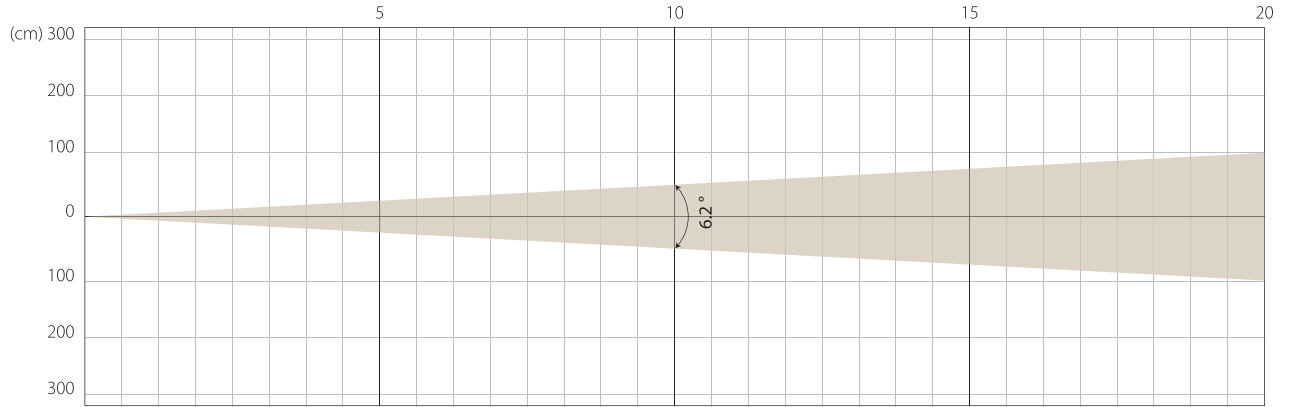
Distance (m)	5		10		15		20	
unit	lux	diameter	lux	diameter	lux	diameter	lux	diameter
White	1265	7,67	316	15,35	141	23,02	79	30,69

SUPER SILENCE MODE

NATIVE CRI GREATER THAN 80

MIN ZOOM

Beam Opening

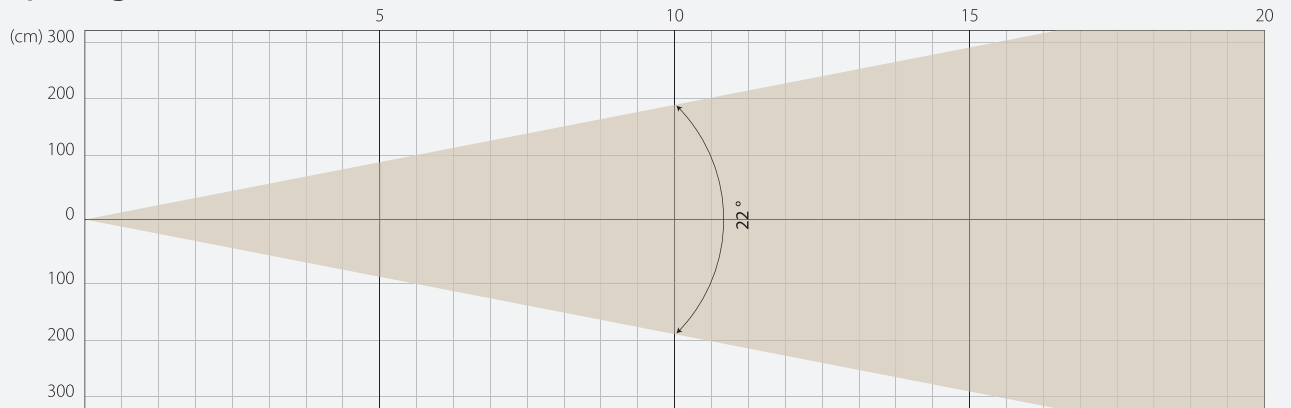


Intensity

Distance (m)	5		10		15		20	
	lux	diameter	lux	diameter	lux	diameter	lux	diameter
White	36289	0,54	9072	1,08	4032	1,62	2268	2,17

MIDDLE ZOOM

Beam Opening

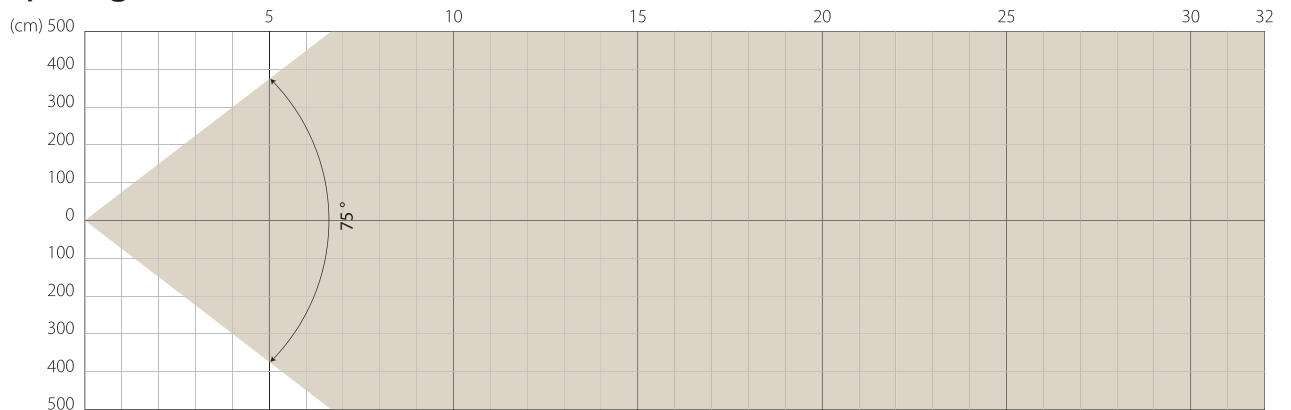


Intensity

Distance (m)	5		10		15		20	
	lux	diameter	lux	diameter	lux	diameter	lux	diameter
White	4484	1,94	1121	3,89	498	5,83	280	7,78

MAX ZOOM

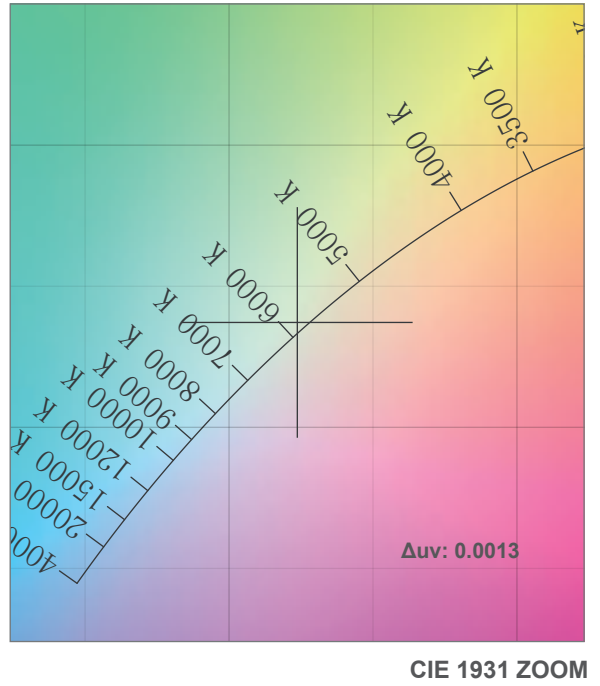
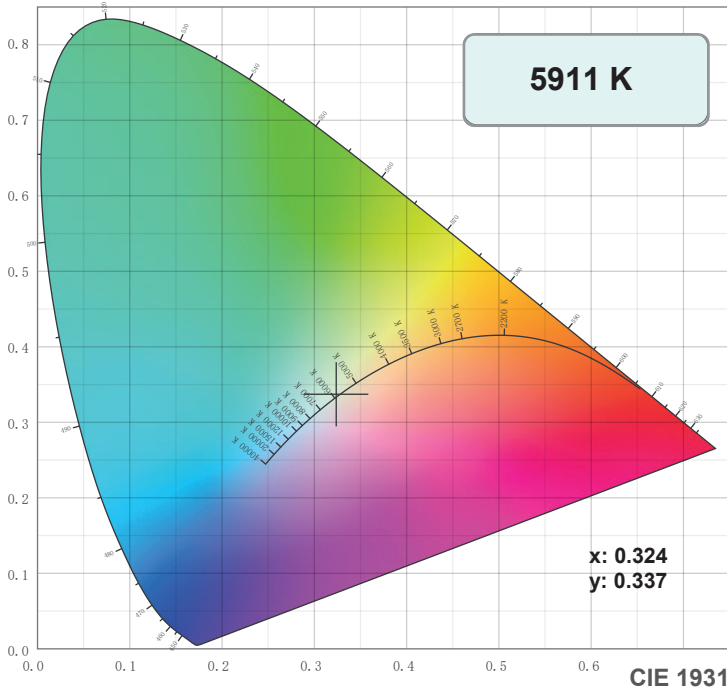
Beam Opening



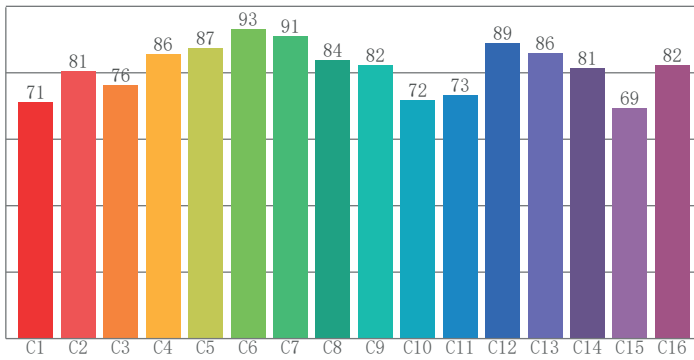
Intensity

Distance (m)	5		10		15		20	
	lux	diameter	lux	diameter	lux	diameter	lux	diameter
White	730	7,67	182	15,35	81	23,02	46	30,69

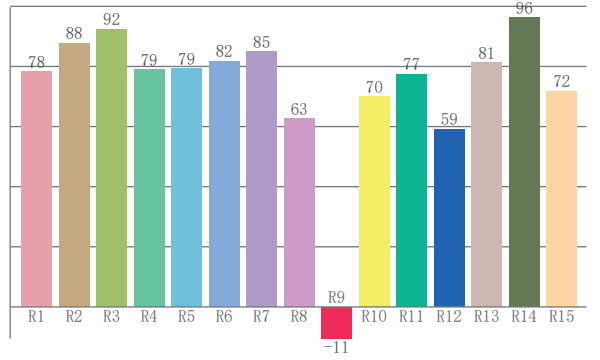
COLOR DETAILS



TM-30: 81.3



CRI: 80.8 (R1-R8)



CRI R values, only R1-R8 are used to calculate final CRI value

R1	R2	R3	R4	R5	R6	R7	R8	R9	R10	R11	R12	R13	R14	R15
78.3	87.8	92.4	79.0	79.2	81.8	85.0	62.6	-10.5	70.0	77.4	59.1	81.2	96.2	71.8

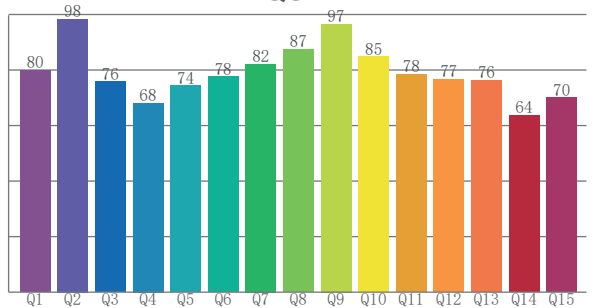
TM30 C values, 16 binned values out of total of 99 C values

C1	C2	C3	C4	C5	C6	C7	C8	C9	C10	C11	C12	C13	C14	C15	C16
71.2	80.6	76.4	85.6	87.4	93.2	90.9	83.9	82.4	71.7	73.3	88.8	85.8	81.3	69.4	82.3

CQS Q values

Q1	Q2	Q3	Q4	Q5	Q6	Q7	Q8	Q9	Q10	Q11	Q12	Q13	Q14	Q15
79.9	98.4	75.8	68.2	74.3	77.6	82.2	87.4	96.6	84.8	78.5	76.5	76.3	63.6	70.0

CQS: 77.4



Color parameters

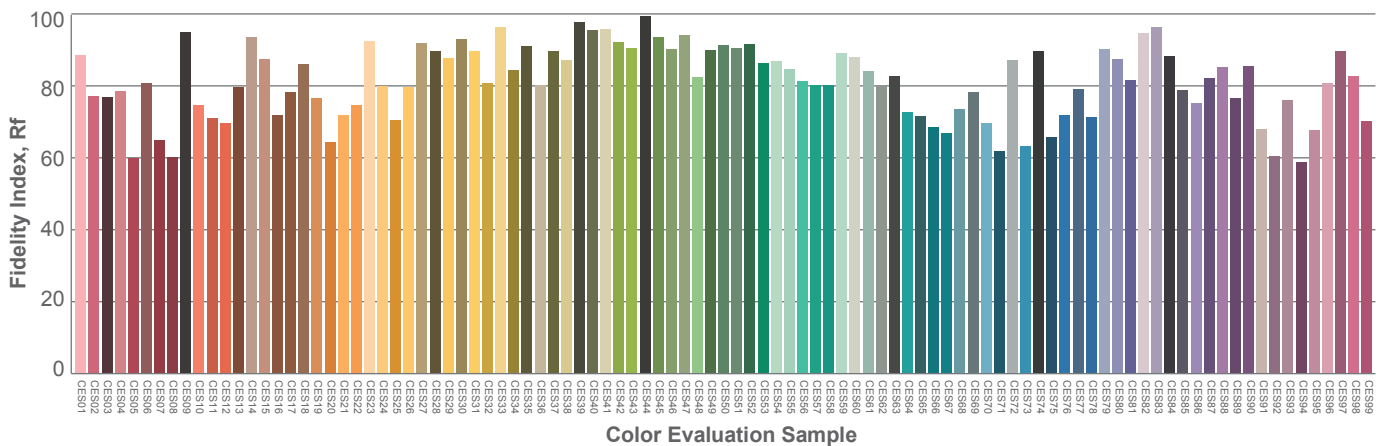
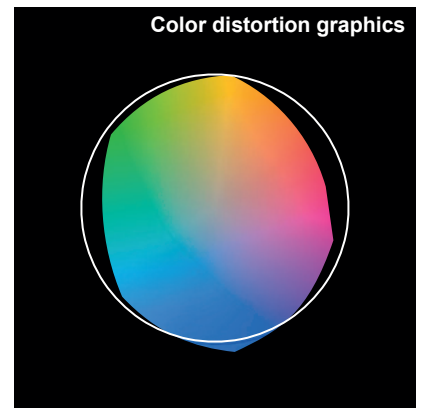
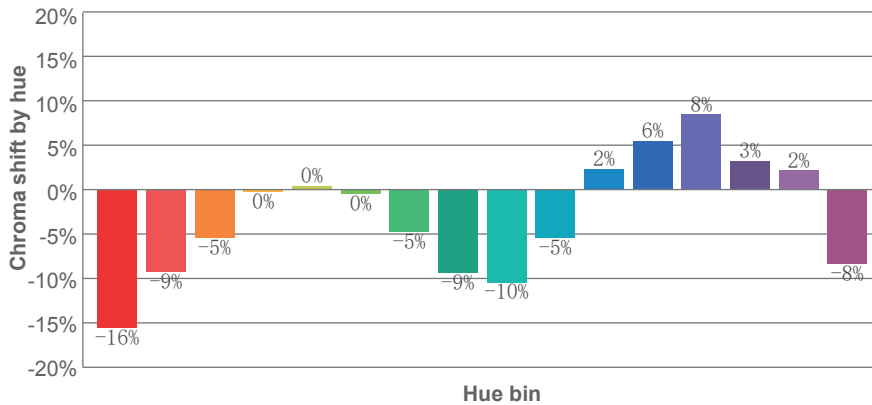
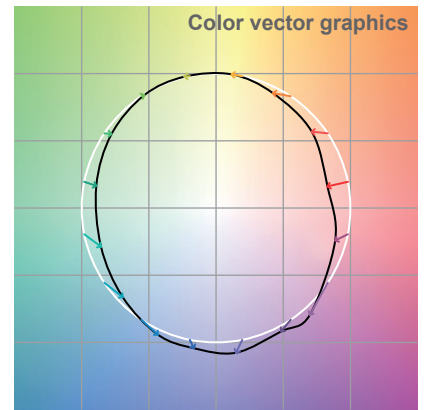
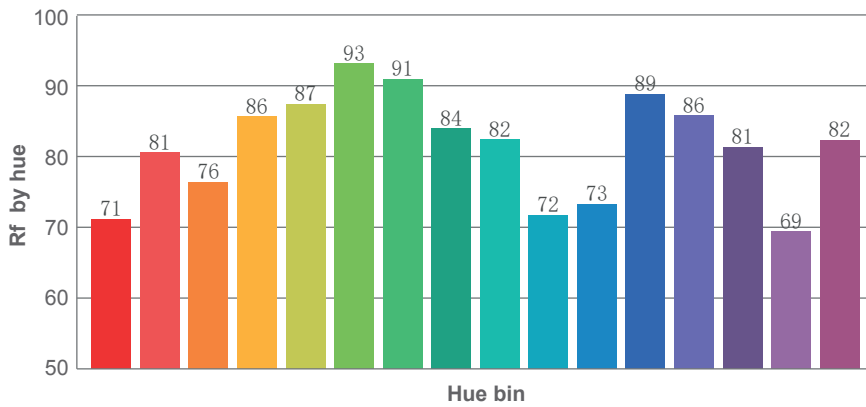
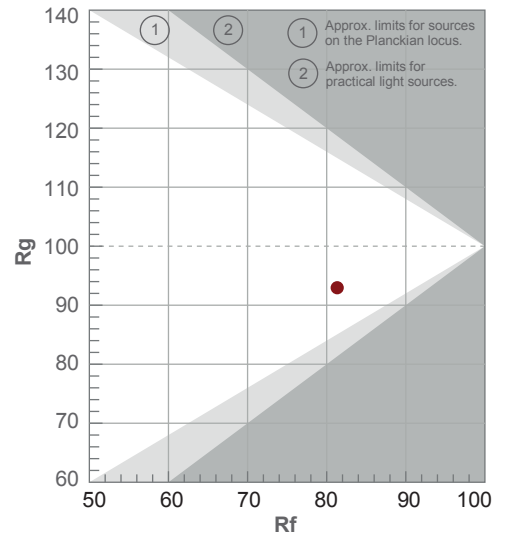
Color temperature	Color rendering index	Red component	Color fidelity	Color gamut	Color quality scale	Color coordinate cie 1931	Color coordinate cie 1931	Color coordinate	Color coordinate	Color deviation from black body
CCT	CRI	CRI R9	TM30 Rf	TM30 Rg	CQS	x	y	u	v	Δuv
5911 K	80.8	-10.5	81.3	93.0	77.4	0.324	0.337	0.202	0.316	0.0013

TM-30 DETAILS

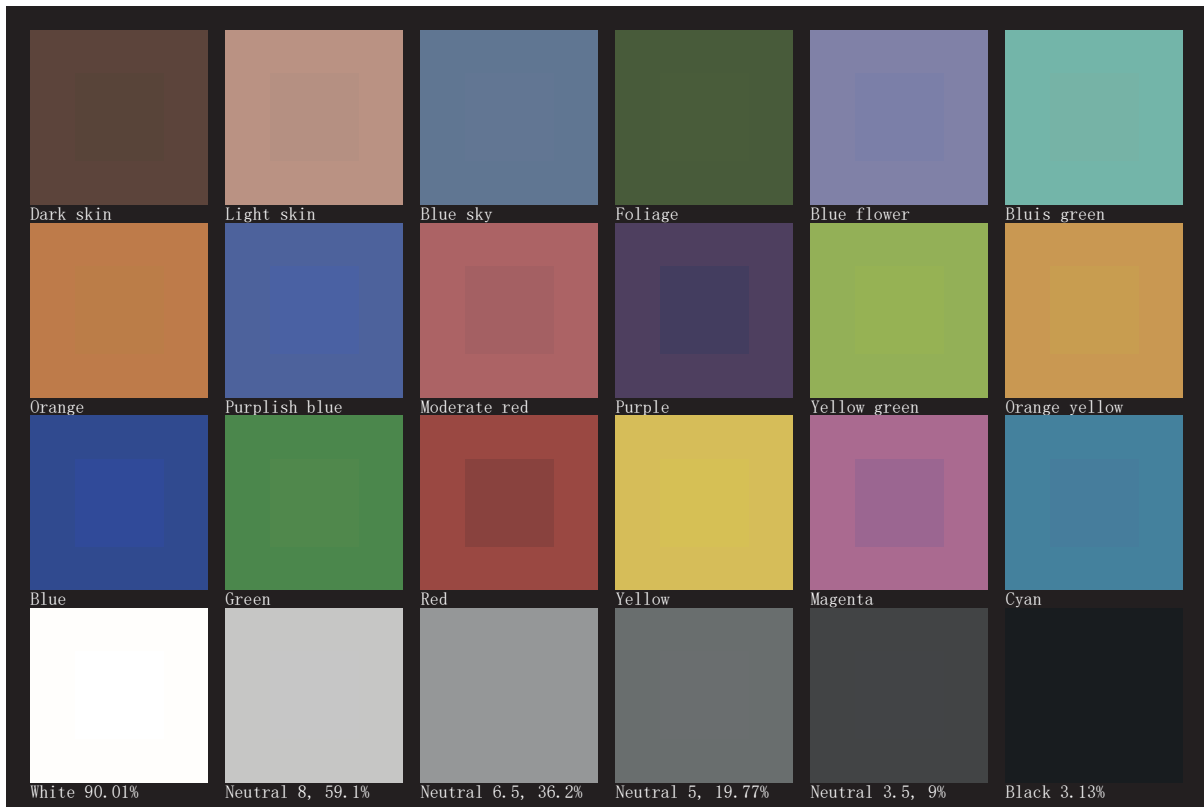
Rf 81.3
Fidelity index Rf

Rg 93.0
Gamut index Rg

Hue Bin	R _f	Shifts (%)	
		Chroma	Hue
1	71	-16%	0%
2	81	-9%	8%
3	76	-5%	12%
4	86	0%	8%
5	87	0%	4%
6	93	0%	-2%
7	91	-5%	-3%
8	84	-9%	1%
9	82	-10%	12%
10	72	-5%	17%
11	73	2%	16%
12	89	6%	4%
13	86	8%	-6%
14	81	3%	-11%
15	69	2%	-27%
16	82	-8%	-6%



TLCI 64





AYRTON

Digital Lighting