



# DOMINO PROFILE S

PHOTOMETRY



**AYRTON**  
Digital Lighting





<b>Total Flux</b>	51326 lm (@zoom 108, integrating sphere measurement, Fan mode stage)
-------------------	--

<b>CCT @LED engin</b>	8000 (±500K)
<b>CCT @open</b>	7000 (±500K)
<b>Ra @open</b>	72 (±2)
<b>Ra max</b>	85 (±2, with CTP filter)
<b>TLCI</b>	48
<b>TM-30</b>	Rf: 73 Rg: 92.4

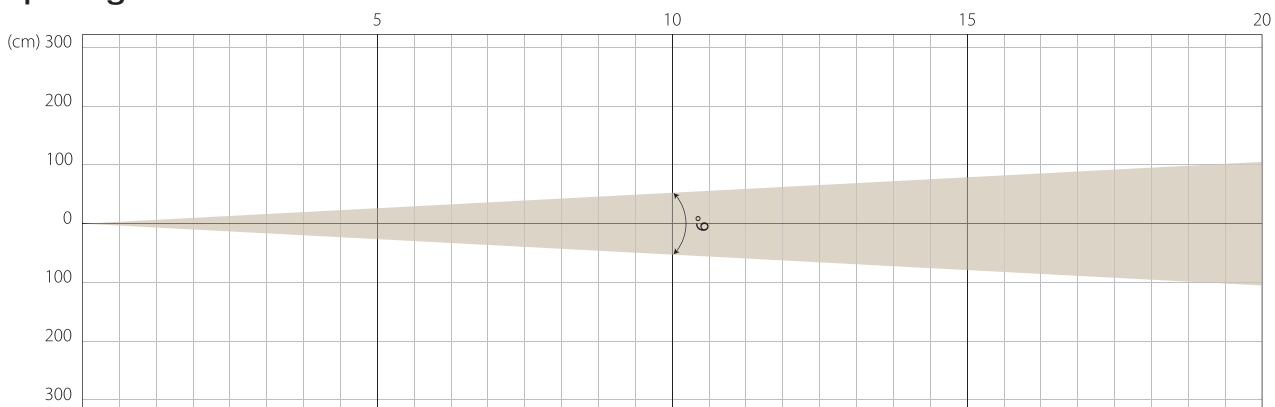
<b>Fan Mode</b>	<b>Noise Level (dBA)</b>	<b>by Goniometer (lm)</b>	<b>by Sphere (lm)</b>
<b>Auto</b>	44,3	37593	50619
<b>Stage</b>	50	38326	51326
<b>Silence</b>	41,1	24305	31432
<b>Super Silence</b>	35,6	17898	25059

Note: noise measured @1m distance, static status, ambient 31 dBA.

<b>Voltage / Power</b>	100-240V, 50-60Hz	1700 W
<b>Fixture Dimension / Weight</b>	490 x 841 x 330 mm	52.5 kg
<b>Packing Dimension / Weight</b>	730 x 765 x 570 mm	70.5 kg

MIN ZOOM

## Beam Opening

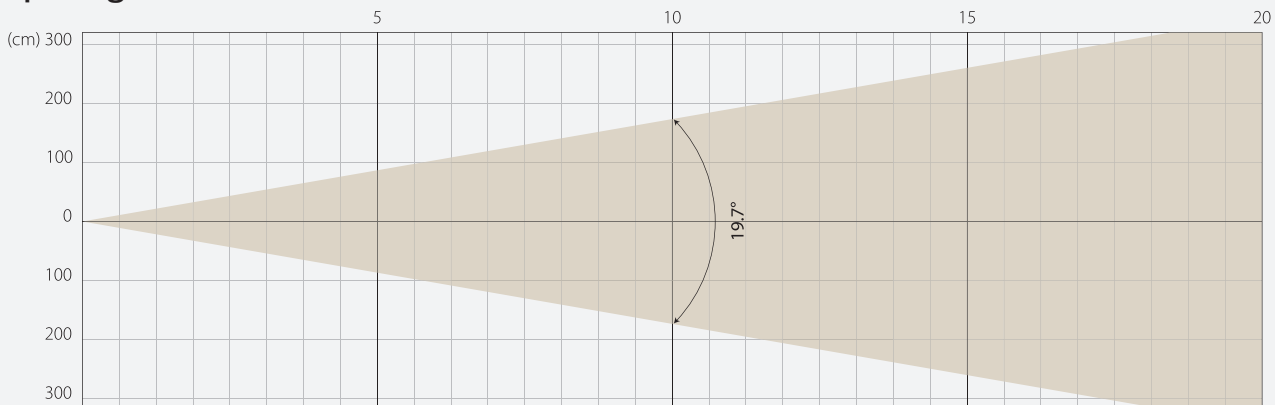


## Intensity

Distance (m)	5		10		15		20	
unit	lux	diameter	lux	diameter	lux	diameter	lux	diameter
White	98808	0,52	24702	1,05	10979	1,57	6176	2,1

MIDDLE ZOOM

## Beam Opening

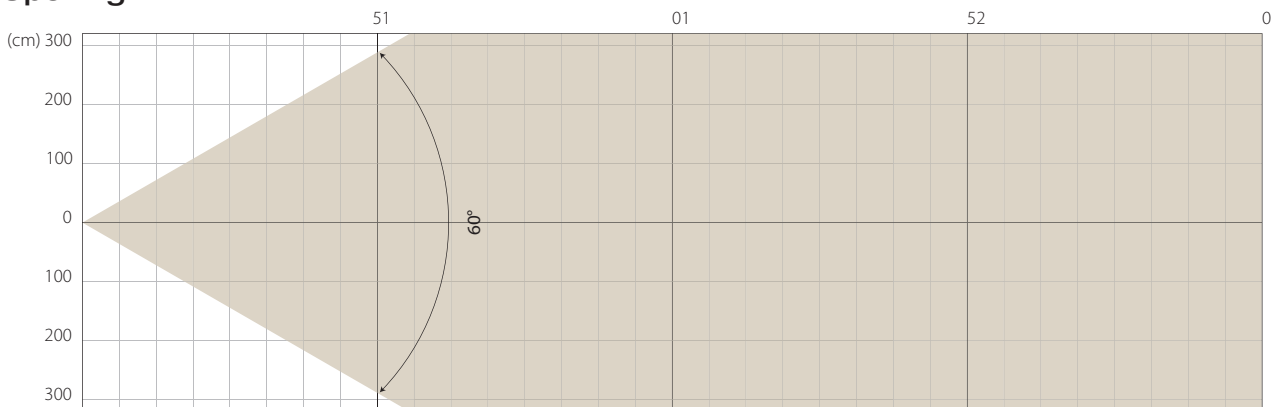


## Intensity

Distance (m)	5		10		15		20	
unit	lux	diameter	lux	diameter	lux	diameter	lux	diameter
White	17382	1,74	4345	3,47	1931	5,21	1086	6,95

MAX ZOOM

## Beam Opening



## Intensity

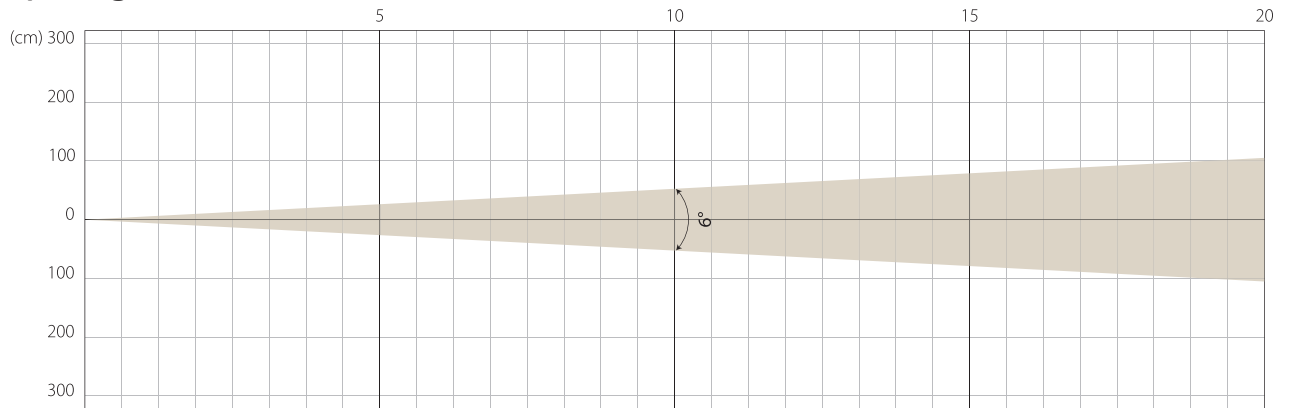
Distance (m)	5		10		15		20	
unit	lux	diameter	lux	diameter	lux	diameter	lux	diameter
White	2394	5,77	599	11,55	266	17,32	150	23,09

# STAGE MODE

NATIVE CRI GREATER THAN 70

MIN ZOOM

## Beam Opening

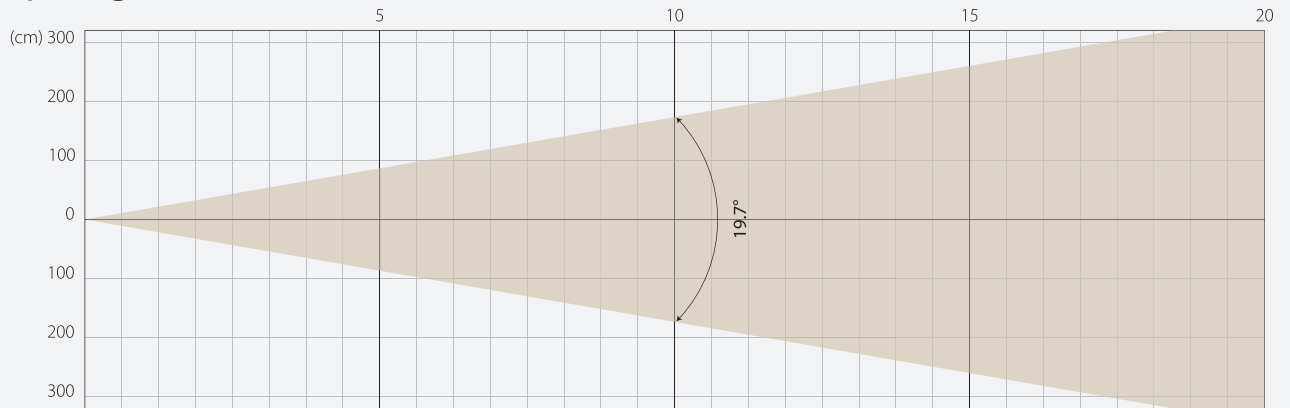


## Intensity

Distance (m)	5		10		15		20	
unit	lux	diameter	lux	diameter	lux	diameter	lux	diameter
White	101087	0,52	25272	1,05	11232	1,57	6318	2,1

MIDDLE ZOOM

## Beam Opening

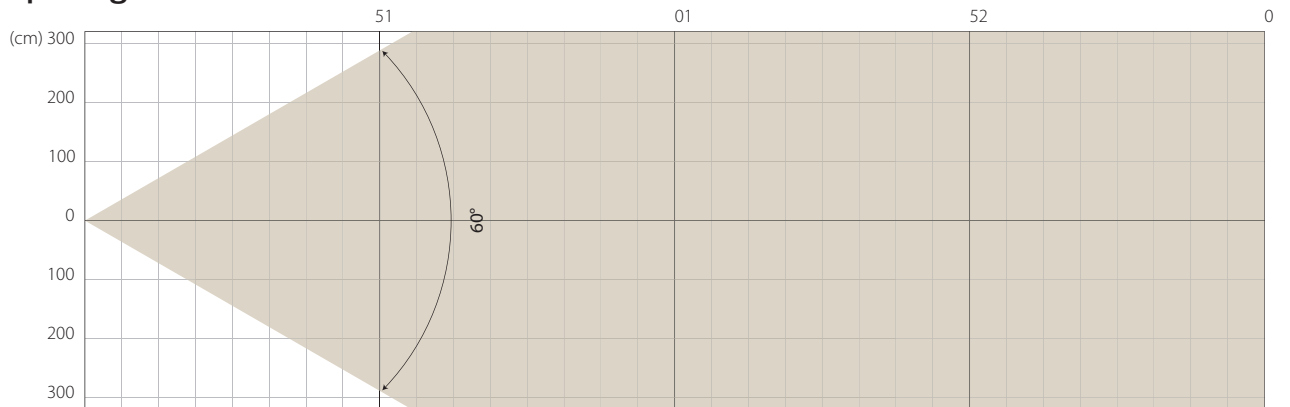


## Intensity

Distance (m)	5		10		15		20	
unit	lux	diameter	lux	diameter	lux	diameter	lux	diameter
White	17757	1,74	4439	3,47	1973	5,21	1110	6,95

MAX ZOOM

## Beam Opening

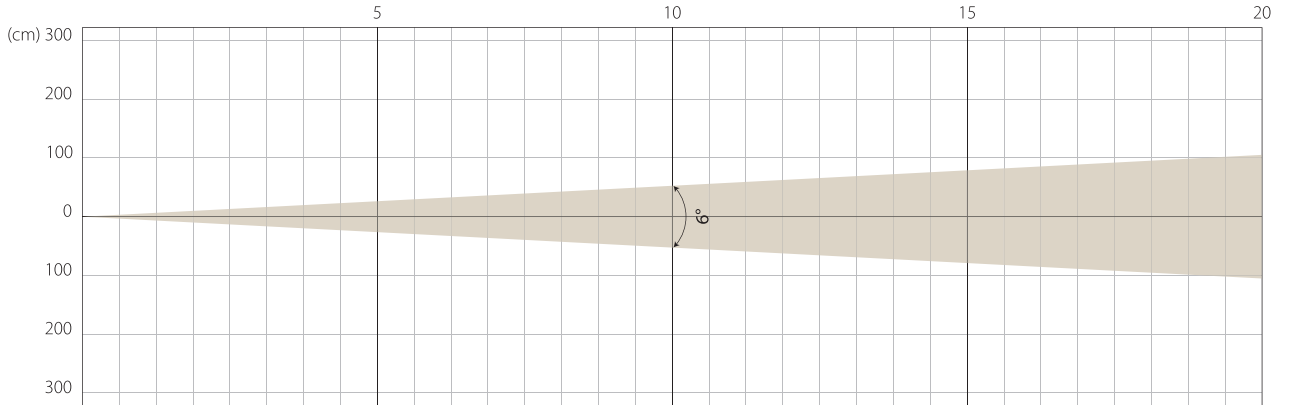


## Intensity

Distance (m)	5		10		15		20	
unit	lux	diameter	lux	diameter	lux	diameter	lux	diameter
White	2443	5,77	611	11,55	271	17,32	153	23,09

MIN ZOOM

## Beam Opening

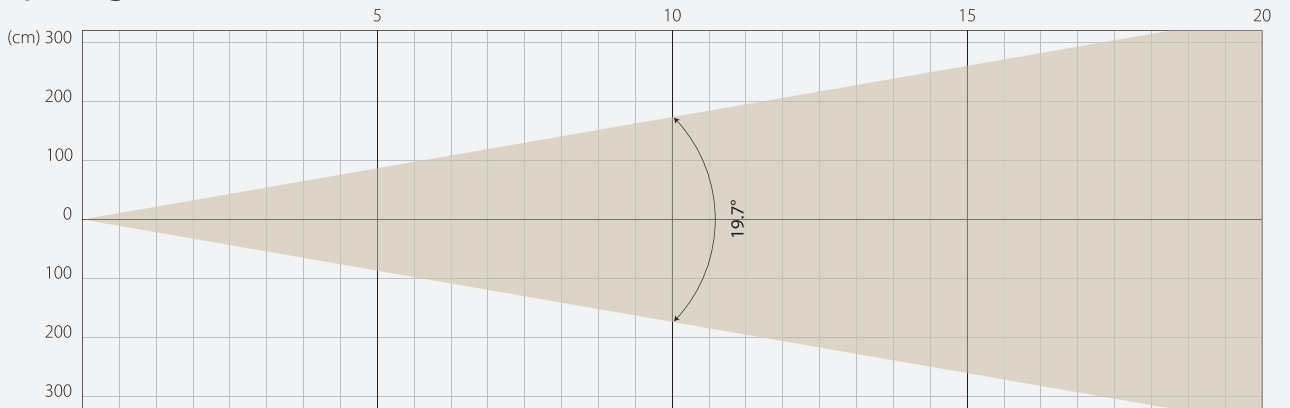


## Intensity

Distance (m)	5		10		15		20	
unit	lux	diameter	lux	diameter	lux	diameter	lux	diameter
White	63272	0,52	15818	1,05	7030	1,57	3954	2,1

MIDDLE ZOOM

## Beam Opening

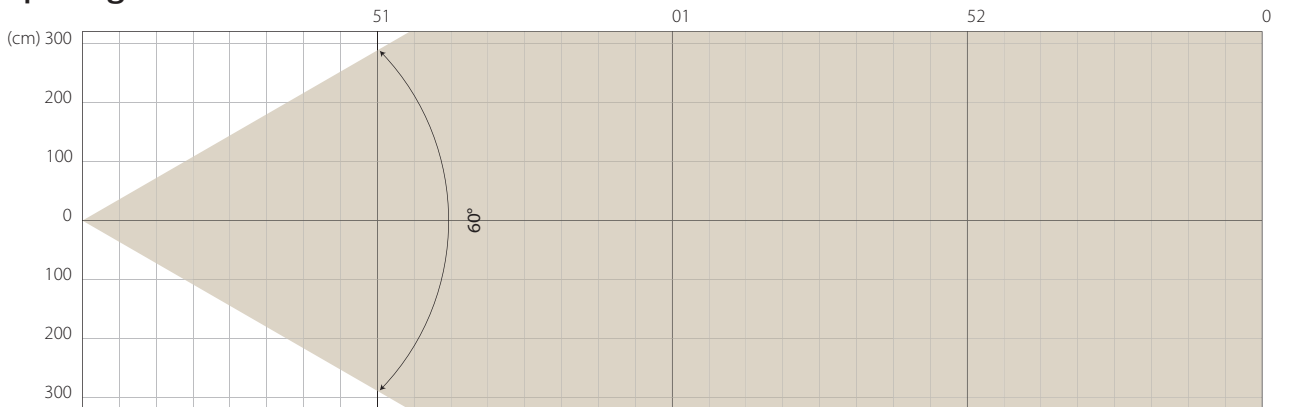


## Intensity

Distance (m)	5		10		15		20	
unit	lux	diameter	lux	diameter	lux	diameter	lux	diameter
White	11247	1,74	2812	3,47	1250	5,21	703	6,95

MAX ZOOM

## Beam Opening



## Intensity

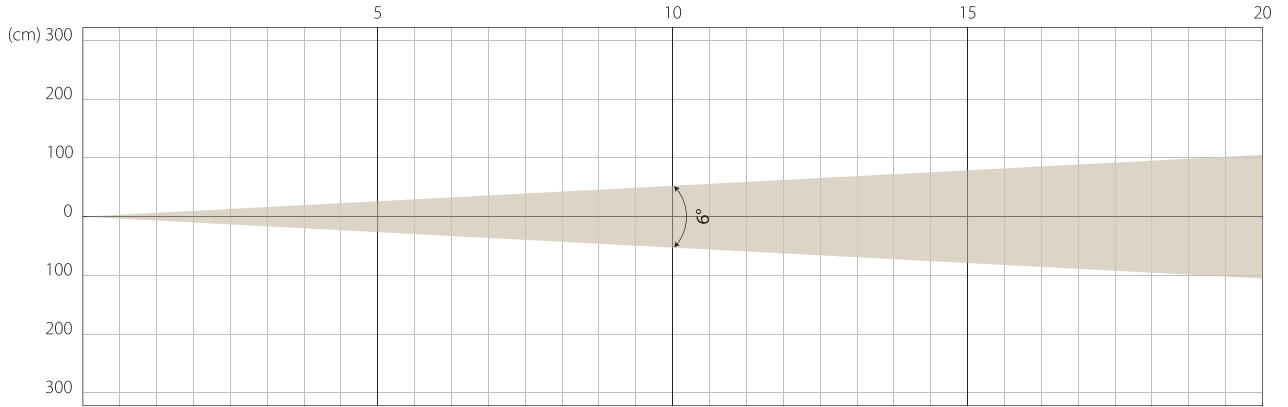
Distance (m)	5		10		15		20	
unit	lux	diameter	lux	diameter	lux	diameter	lux	diameter
White	1541	5,77	385	11,55	171	17,32	96	23,09

# SUPER SILENCE MODE

NATIVE CRI GREATER THAN 70

MIN ZOOM

## Beam Opening

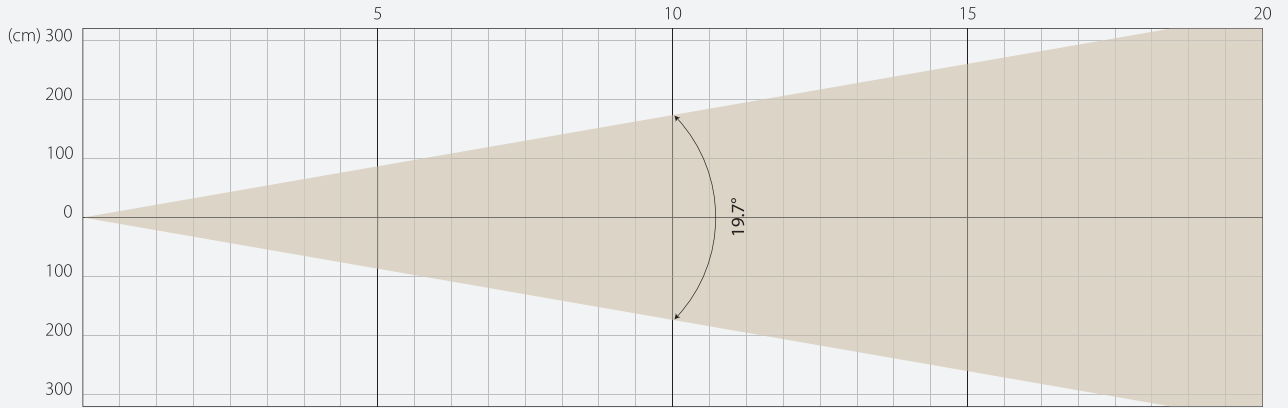


## Intensity

Distance (m)	5		10		15		20	
unit	lux	diameter	lux	diameter	lux	diameter	lux	diameter
White	47771	0,52	11943	1,05	5308	1,57	2986	2,1

MIDDLE ZOOM

## Beam Opening

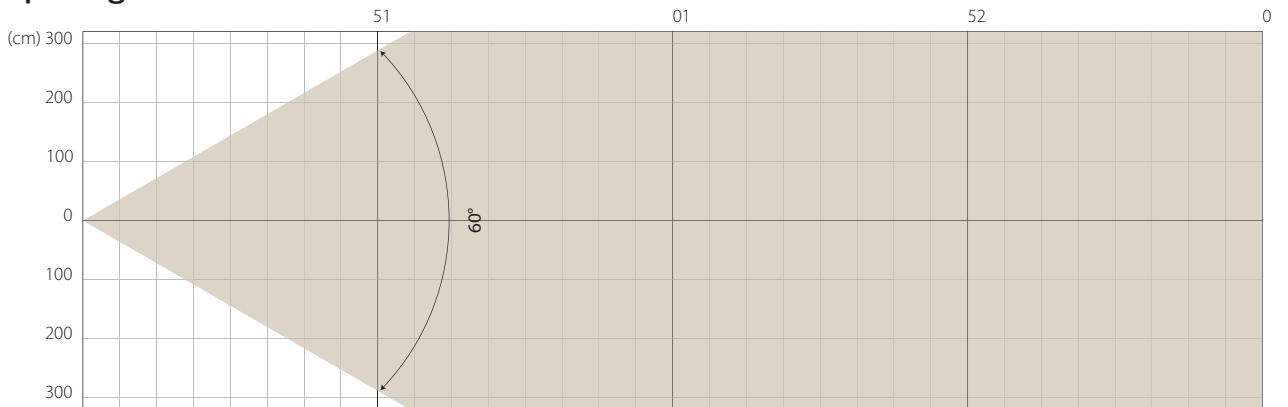


## Intensity

Distance (m)	5		10		15		20	
unit	lux	diameter	lux	diameter	lux	diameter	lux	diameter
White	8230	1,74	2057	3,47	914	5,21	514	6,95

MAX ZOOM

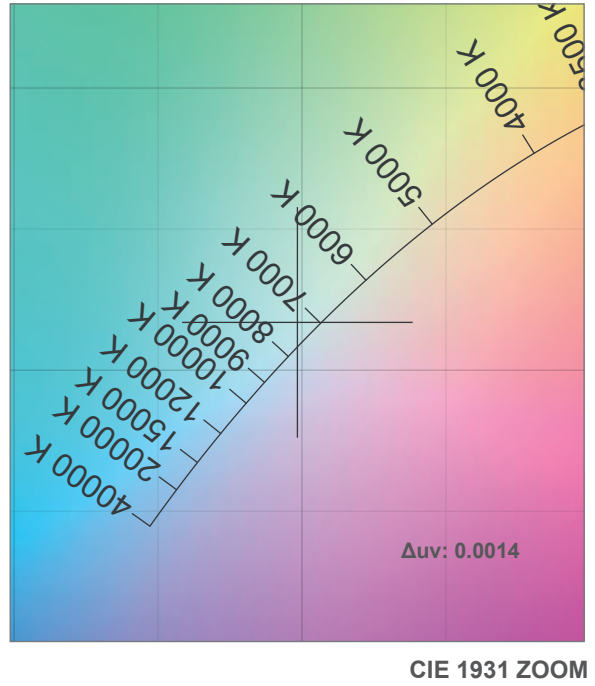
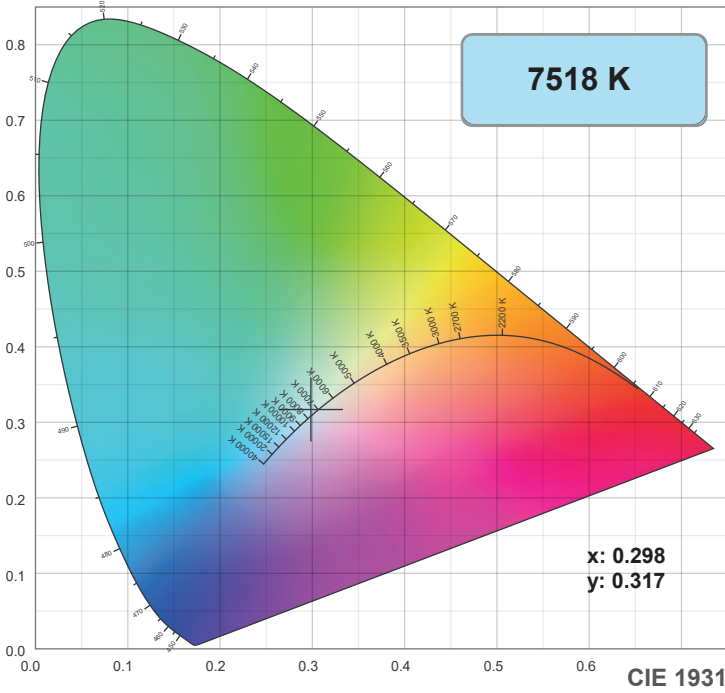
## Beam Opening



## Intensity

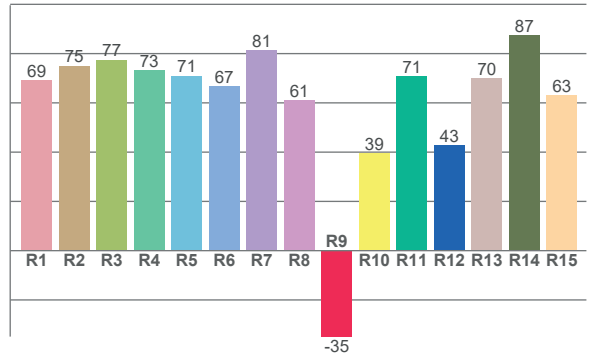
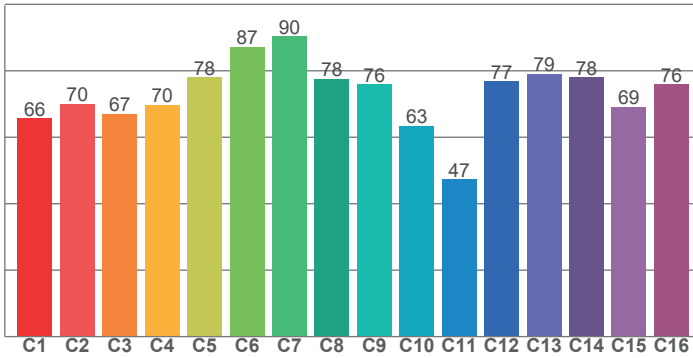
Distance (m)	5		10		15		20	
unit	lux	diameter	lux	diameter	lux	diameter	lux	diameter
White	1138	5,77	284	11,55	126	17,32	71	23,09

# COLOR DETAILS



TM-30: 73.0

CRI: 71.9 (R1-R8)



CRI R values, only R1-R8 are used to calculate final CRI value

R1	R2	R3	R4	R5	R6	R7	R8	R9	R10	R11	R12	R13	R14	R15
69.1	75.0	77.5	73.2	71.0	66.8	81.3	61.0	-34.9	39.4	70.7	42.8	69.9	87.4	63.2

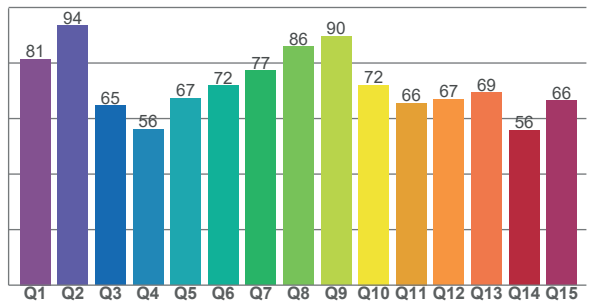
TM30 C values, 16 binned values out of total of 99 C values

C1	C2	C3	C4	C5	C6	C7	C8	C9	C10	C11	C12	C13	C14	C15	C16
65.7	70.0	67.1	69.8	78.1	87.1	90.4	77.6	76.0	63.4	47.3	76.8	79.0	78.0	69.2	75.9

CQS Q values

Q1	Q2	Q3	Q4	Q5	Q6	Q7	Q8	Q9	Q10	Q11	Q12	Q13	Q14	Q15
81.5	93.5	64.6	56.2	67.3	71.9	77.3	85.9	89.7	72.0	65.6	66.9	69.4	55.8	66.5

CQS: 70.2



## Color parameters

Color temperature	Color rendering index	Red component	Color fidelity	Color gamut	Color quality scale	Color coordinate cie 1931	Color coordinate cie 1931	Color coordinate	Color coordinate	Color deviation from black body
CCT	CRI	CRI R9	TM30 Rf	TM30 Rg	CQS	x	y	u	v	Δuv
7518 K	71.9	-34.9	73.0	92.4	70.2	0.298	0.317	0.192	0.306	0.0014

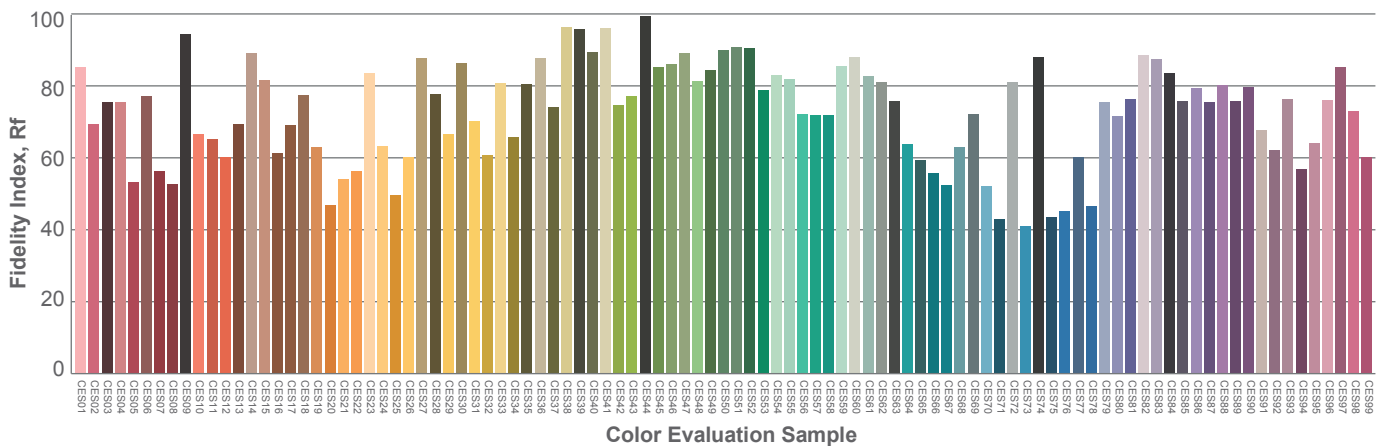
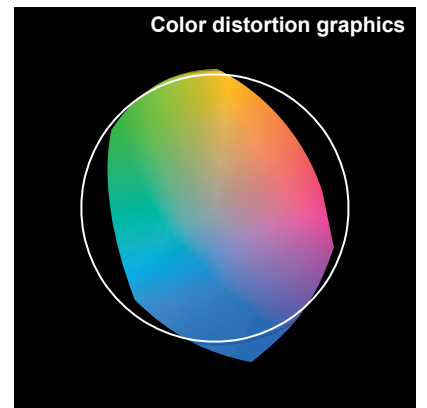
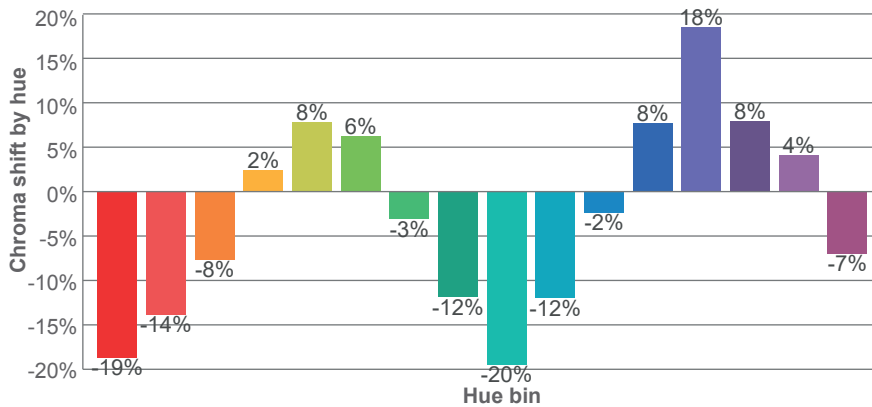
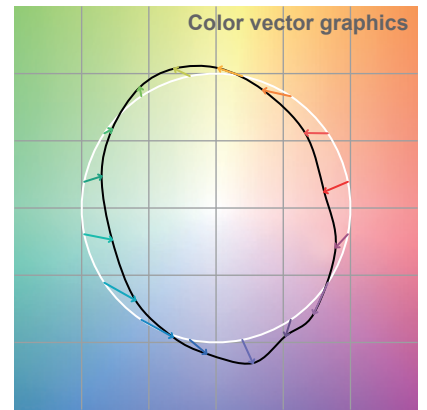
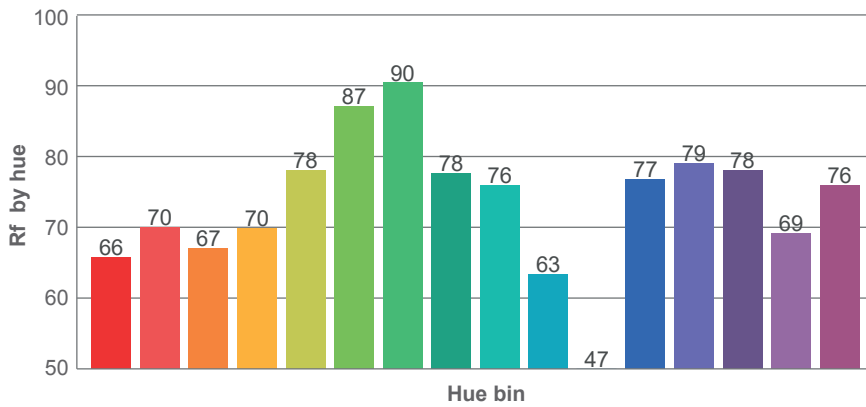
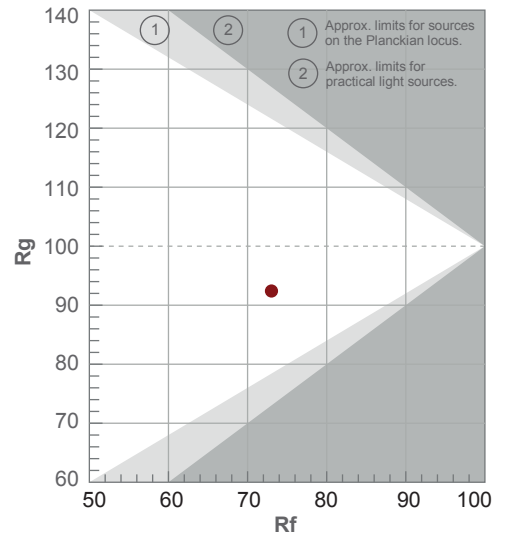


# TM-30 DETAILS

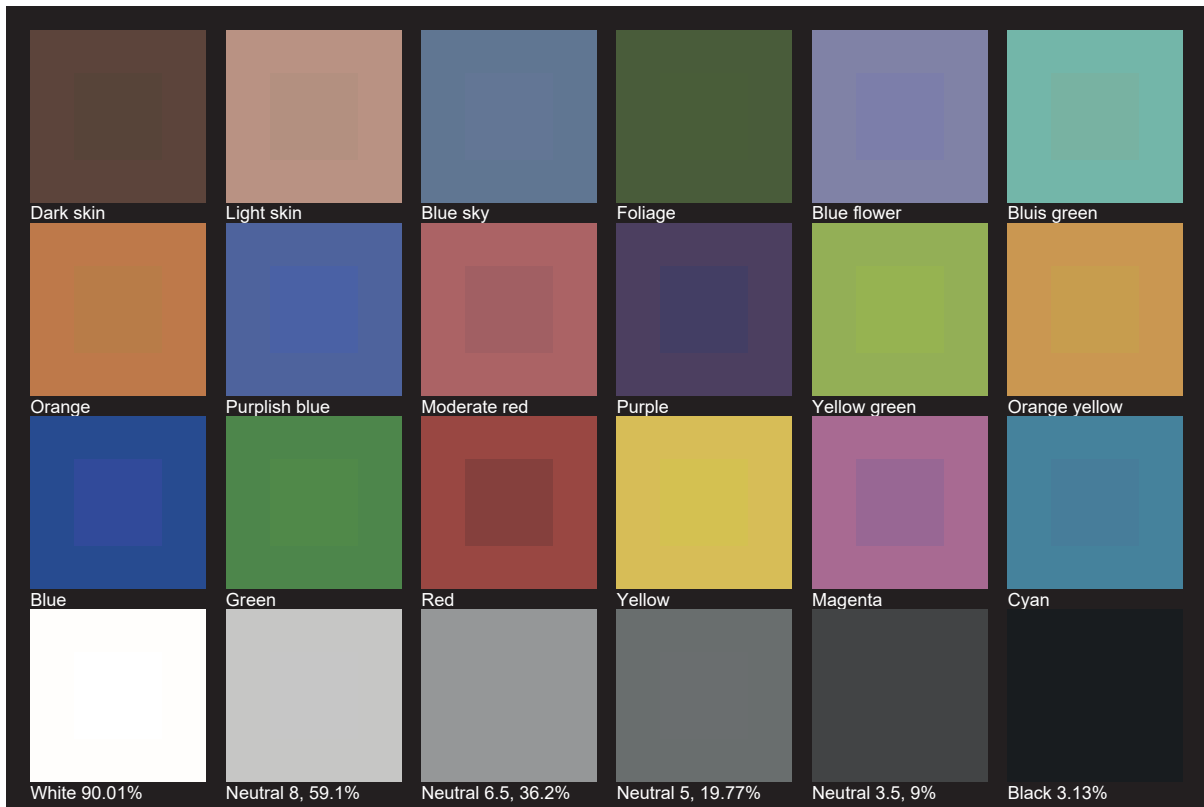
**Rf 73.0**  
Fidelity index Rf

**Rg 92.4**  
Gamut index Rg

Hue Bin	R <sub>f</sub>	Shifts (%)	
		Chroma	Hue
1	66	-19%	-4%
2	70	-14%	10%
3	67	-8%	20%
4	70	2%	19%
5	78	8%	10%
6	87	6%	-3%
7	90	-3%	-6%
8	78	-12%	-7%
9	76	-20%	8%
10	63	-12%	24%
11	47	-2%	26%
12	77	8%	14%
13	79	18%	4%
14	78	8%	-10%
15	69	4%	-25%
16	76	-7%	-11%



# TLCI 48







**AYRTON**

Digital Lighting