



DIABLO S

PHOTOMETRY



AYRTON
Digital Lighting



Total Flux	19413 lm (@zoom 128, integrating sphere measurement, Fan mode auto)
-------------------	---

CCT @LED engin	8000 (±500K)
CCT @open	7000 (±500K)
Ra @open	70 (±2)
TLCI	47
TM-30	Rf: 72 Rg: 92.5

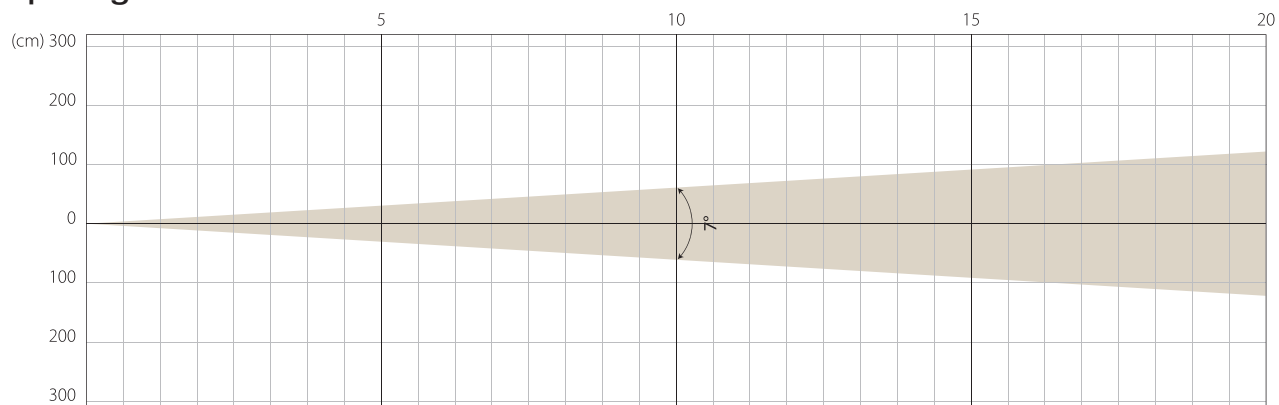
Fan Mode	Noise Level (dBA)	by Goniometer (lm)	by Sphere (lm)
Auto	44,9	16414	19413
Stage	47,3	16355	19502
Silence	39,6	10506	14505
Super Silence	34,7	9615	11553

Note: noise measured @1m distance, static status, ambient 31 dBA.

Voltage / Power	100-240V, 50-60HZ	550 W
Fixture Dimension / Weight	365 x 591 x 212 mm	22 kg
Packing Dimension / Weight	445 x 750 x 295 mm	30,5 kg

MIN ZOOM

Beam Opening

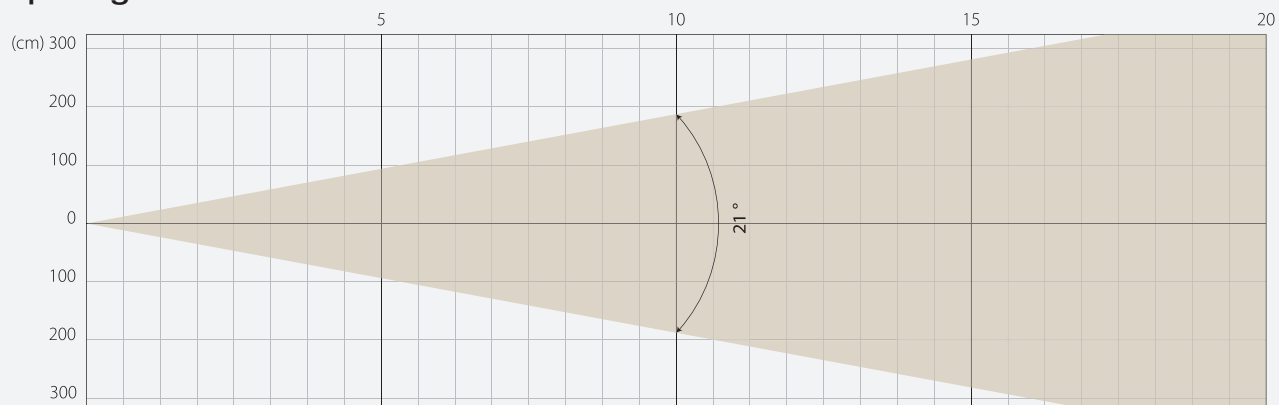


Intensity

Distance (m)	5		10		15		20	
unit	lux	diameter	lux	diameter	lux	diameter	lux	diameter
White	36304	0,61	9076	1,22	4034	1,83	2269	2,45

MIDDLE ZOOM

Beam Opening

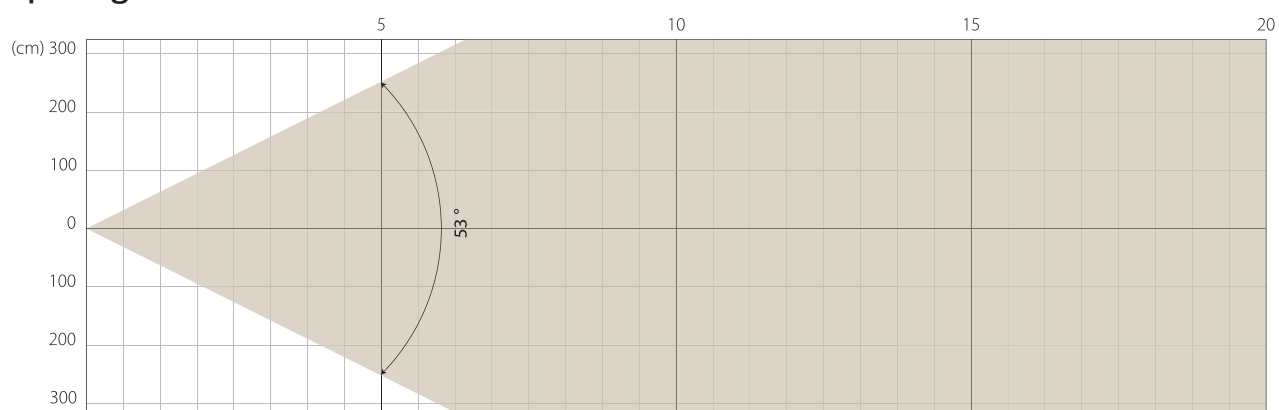


Intensity

Distance (m)	5		10		15		20	
unit	lux	diameter	lux	diameter	lux	diameter	lux	diameter
White	7544	1,85	1886	3,71	838	5,56	471	7,41

MAX ZOOM

Beam Opening



Intensity

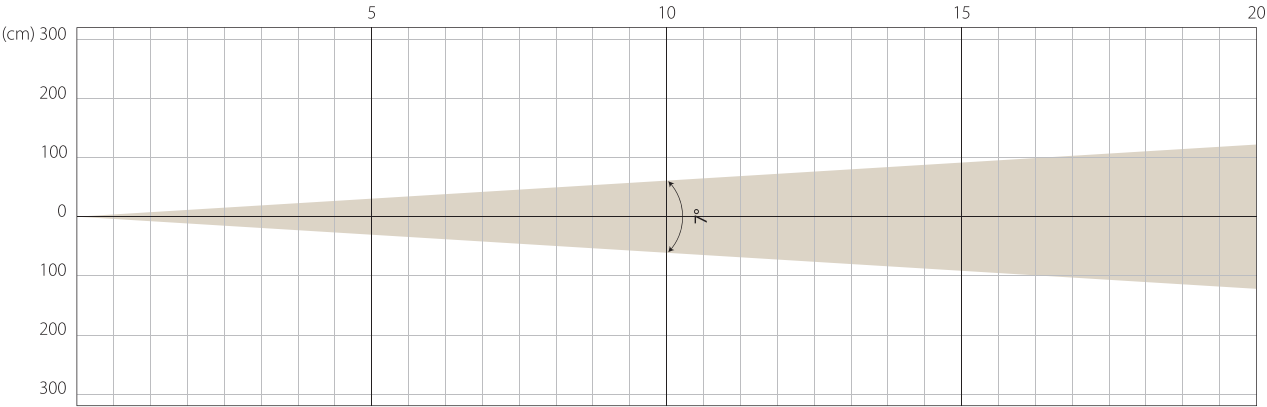
Distance (m)	5		10		15		20	
unit	lux	diameter	lux	diameter	lux	diameter	lux	diameter
White	1333	4,99	333	9,97	148	14,96	83	19,94

STAGE MODE

NATIVE CRI GREATER THAN 70

MIN ZOOM

Beam Opening

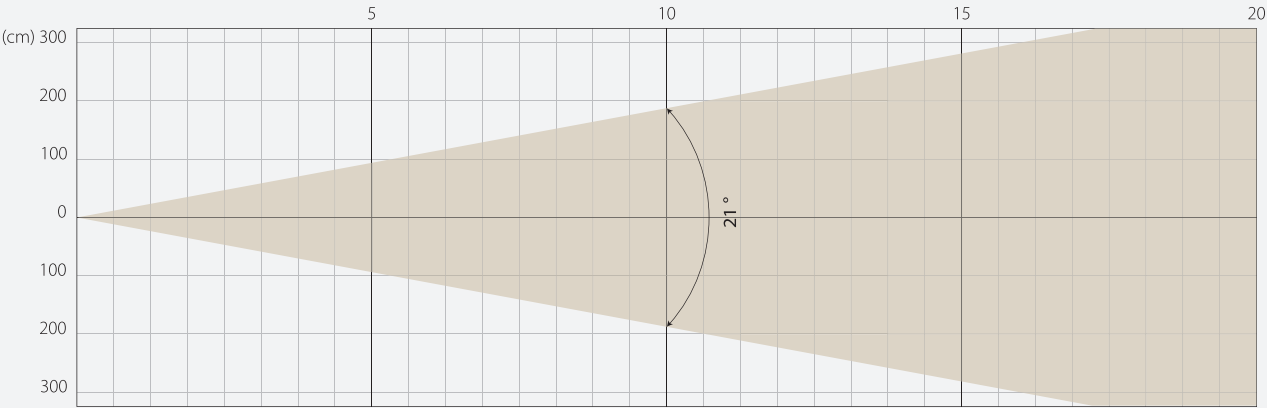


Intensity

Distance (m)	5		10		15		20	
unit	lux	diameter	lux	diameter	lux	diameter	lux	diameter
White	37621	0,61	9405	1,22	4180	1,83	2351	2,45

MIDDLE ZOOM

Beam Opening

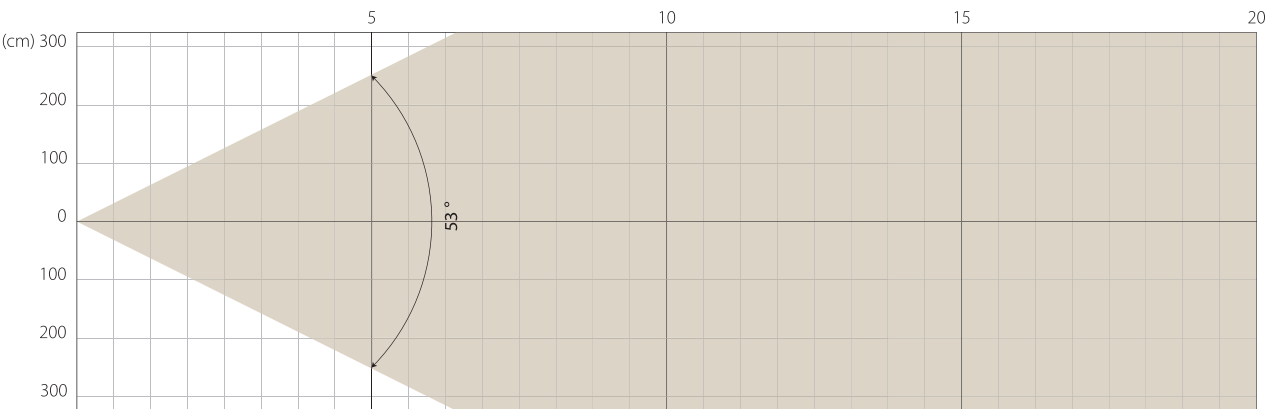


Intensity

Distance (m)	5		10		15		20	
unit	lux	diameter	lux	diameter	lux	diameter	lux	diameter
White	7661	1,85	1915	3,71	851	5,56	479	7,41

MAX ZOOM

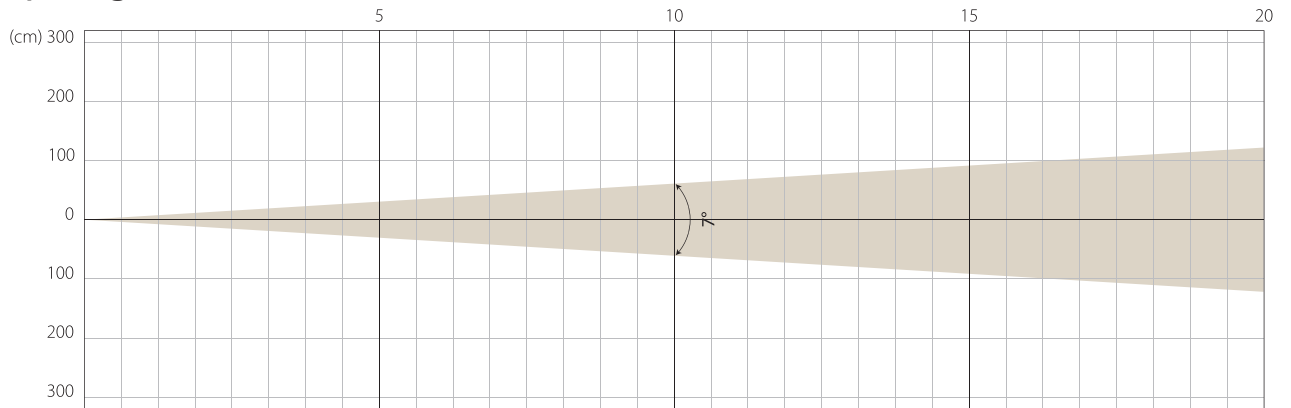
Beam Opening



Intensity

Distance (m)	5		10		15		20	
unit	lux	diameter	lux	diameter	lux	diameter	lux	diameter
White	1342	4,99	336	9,97	149	14,96	84	19,94

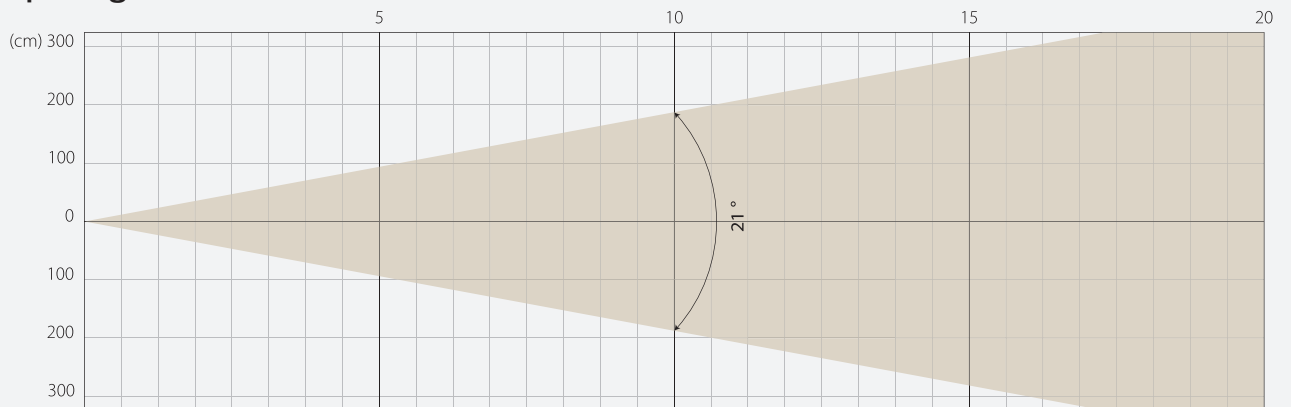
Beam Opening



Intensity

Distance (m)	5		10		15		20	
unit	lux	diameter	lux	diameter	lux	diameter	lux	diameter
White	23016	0,61	5754	1,22	2557	1,83	1439	2,45

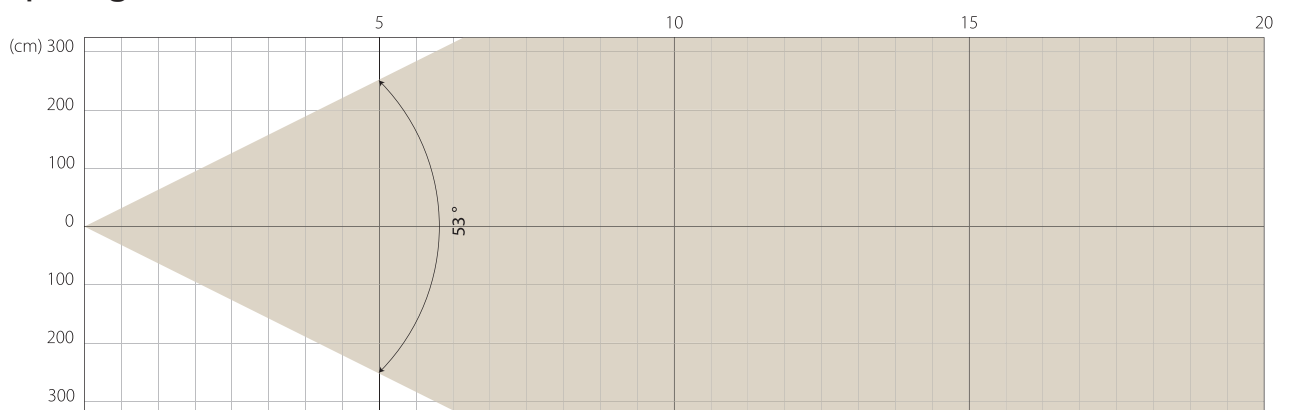
Beam Opening



Intensity

Distance (m)	5		10		15		20	
unit	lux	diameter	lux	diameter	lux	diameter	lux	diameter
White	4803	1,85	1201	3,71	534	5,56	300	7,41

Beam Opening



Intensity

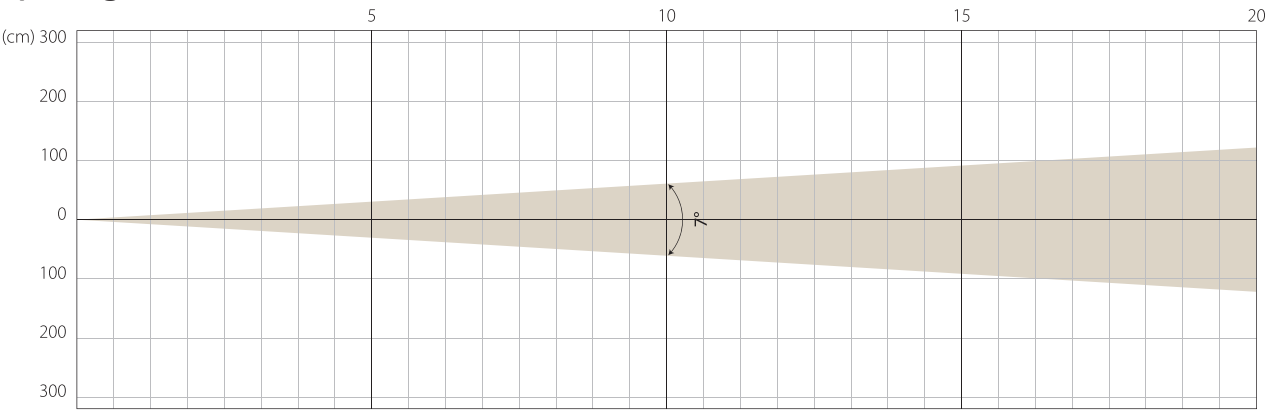
Distance (m)	5		10		15		20	
unit	lux	diameter	lux	diameter	lux	diameter	lux	diameter
White	836	4,99	209	9,97	93	14,96	52	19,94

SUPER SILENCE MODE

NATIVE CRI GREATER THAN 70

MIN ZOOM

Beam Opening

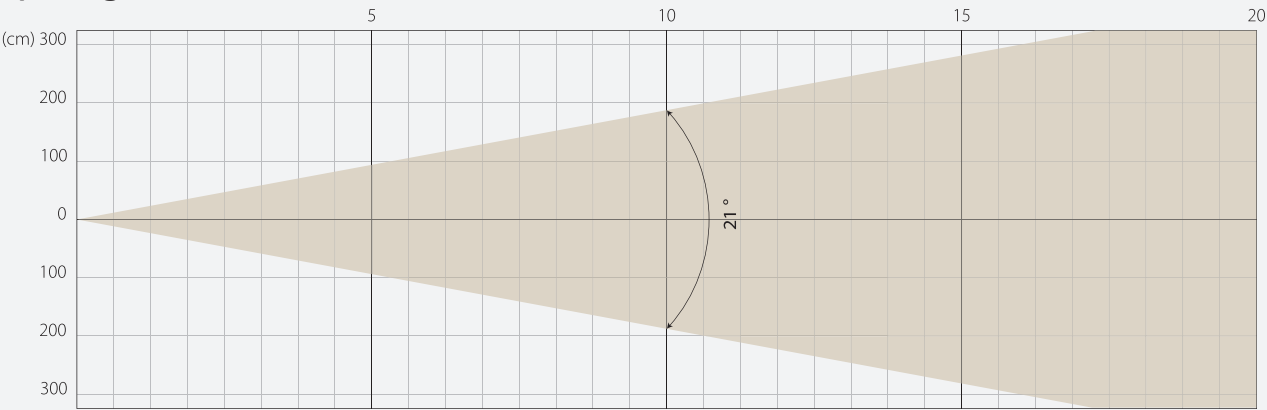


Intensity

Distance (m)	5		10		15		20	
unit	lux	diameter	lux	diameter	lux	diameter	lux	diameter
White	21023	0,61	5256	1,22	2336	1,83	1314	2,45

MIDDLE ZOOM

Beam Opening

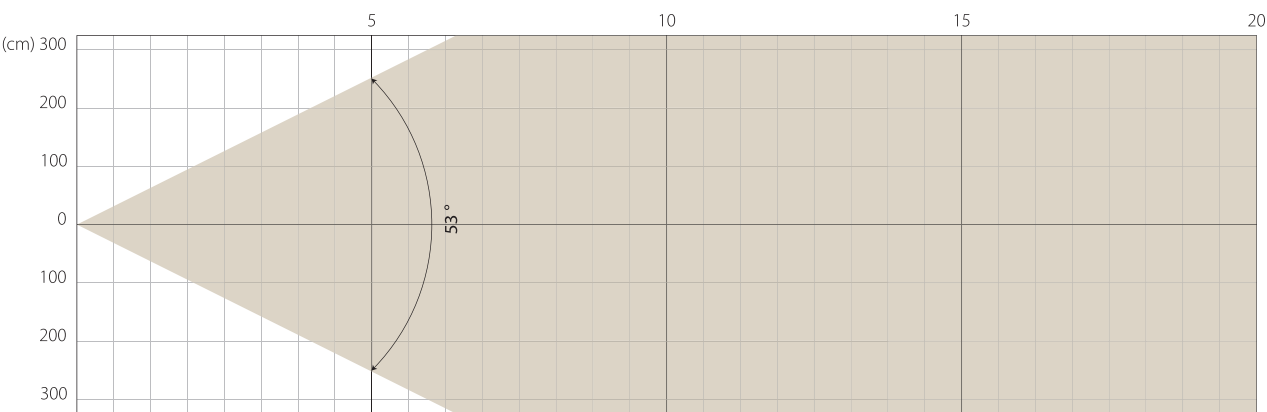


Intensity

Distance (m)	5		10		15		20	
unit	lux	diameter	lux	diameter	lux	diameter	lux	diameter
White	4358	1,85	1089	3,71	484	5,56	272	7,41

MAX ZOOM

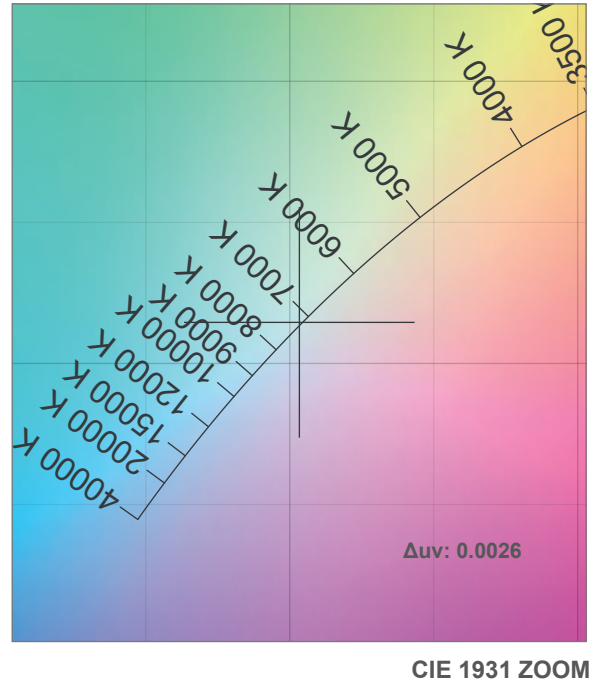
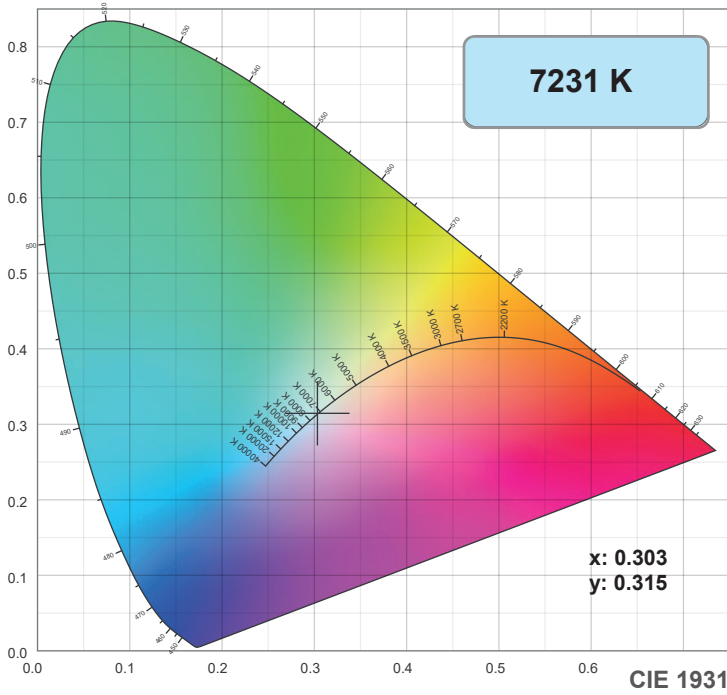
Beam Opening



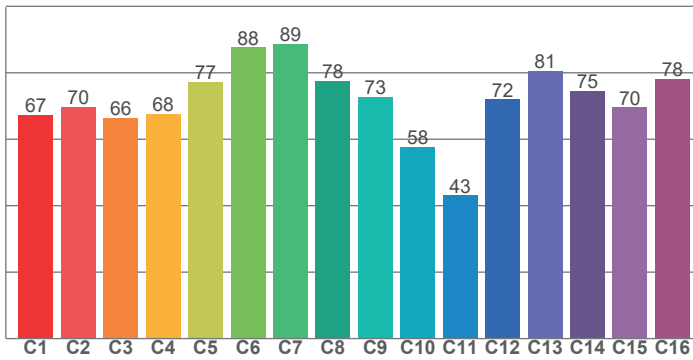
Intensity

Distance (m)	5		10		15		20	
unit	lux	diameter	lux	diameter	lux	diameter	lux	diameter
White	763	4,99	191	9,97	85	14,96	48	19,94

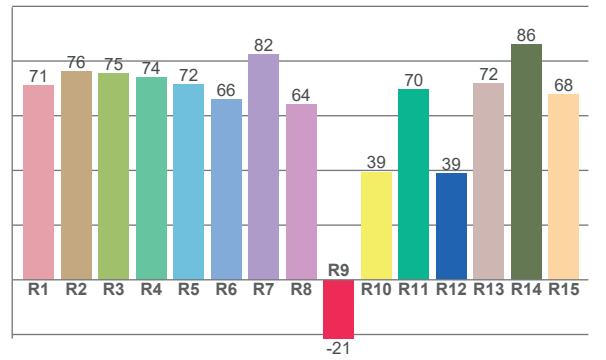
COLOR DETAILS



TM-30: 72.0



CRI: 72.6 (R1-R8)



CRI R values, only R1-R8 are used to calculate final CRI value

R1	R2	R3	R4	R5	R6	R7	R8	R9	R10	R11	R12	R13	R14	R15
71.2	76.1	75.5	73.9	71.5	65.9	82.4	64.2	-21.5	39.5	69.7	39.0	71.9	86.0	67.9

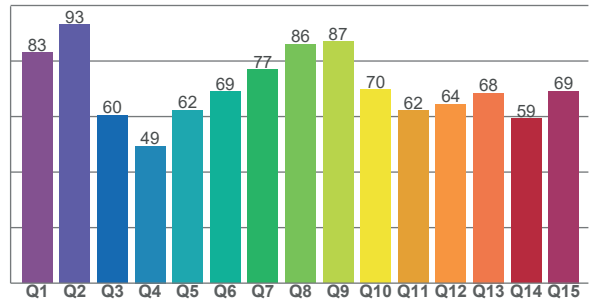
TM30 C values, 16 binned values out of total of 99 C values

C1	C2	C3	C4	C5	C6	C7	C8	C9	C10	C11	C12	C13	C14	C15	C16
67.3	69.8	66.4	67.6	77.2	87.7	88.8	77.6	72.7	57.7	43.1	71.9	80.6	74.5	69.6	78.2

CQS Q values

Q1	Q2	Q3	Q4	Q5	Q6	Q7	Q8	Q9	Q10	Q11	Q12	Q13	Q14	Q15
83.1	93.1	60.5	49.4	62.4	69.0	76.9	86.0	87.1	69.7	62.1	64.4	68.5	59.3	69.2

CQS: 68.4



Color parameters

Color temperature	Color rendering index	Red component	Color fidelity	Color gamut	Color quality scale	Color coordinate cie 1931	Color coordinate cie 1931	Color coordinate	Color coordinate	Color deviation from black body
CCT	CRI	CRI R9	TM30 Rf	TM30 Rg	CQS	x	y	u	v	Δuv
7231 K	72.6	-21.5	72.0	92.5	68.4	0.303	0.315	0.197	0.306	0.0026

TM-30 DETAILS

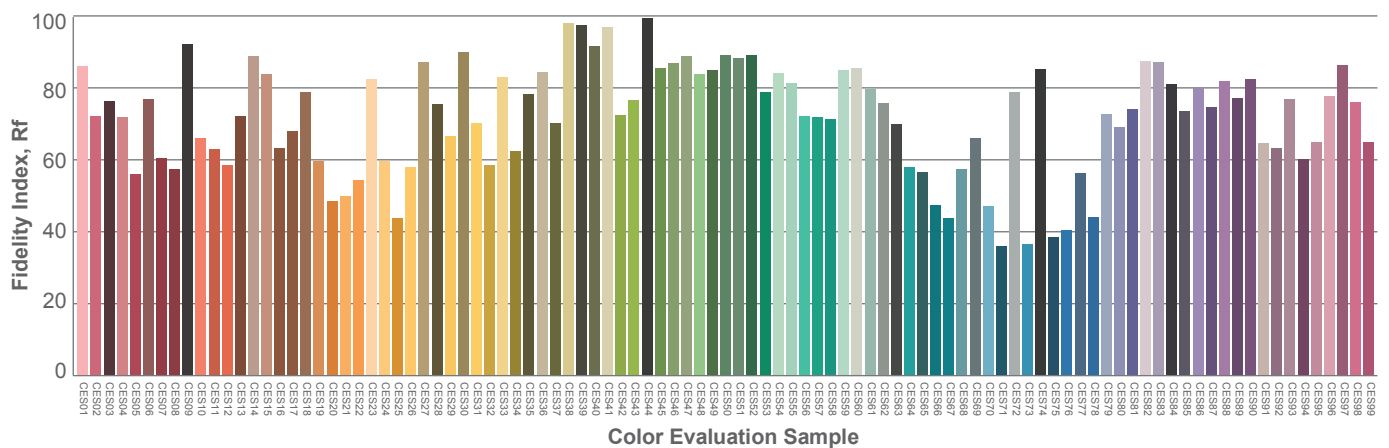
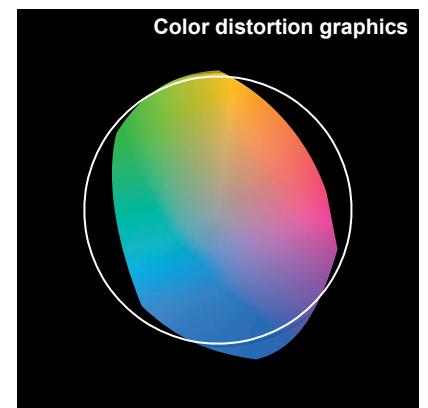
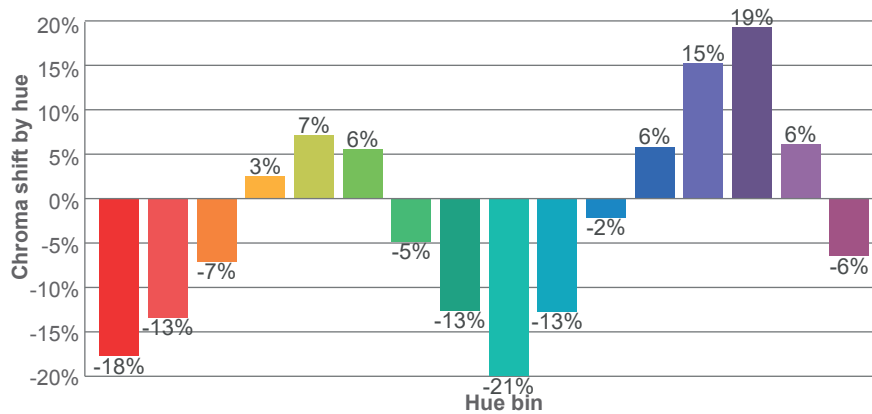
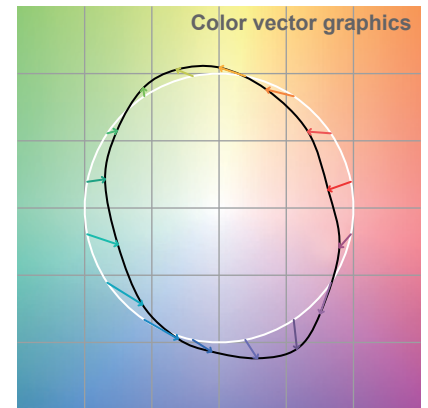
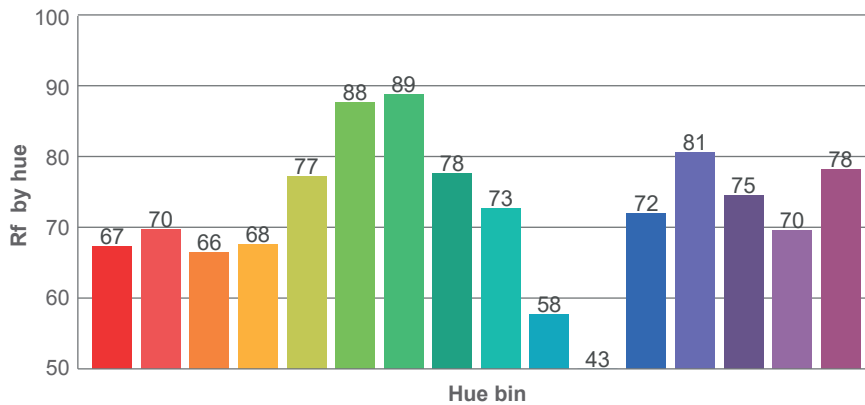
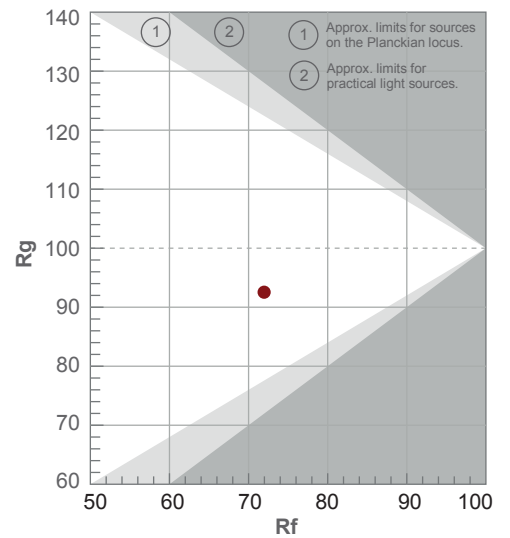
Rf 72.0

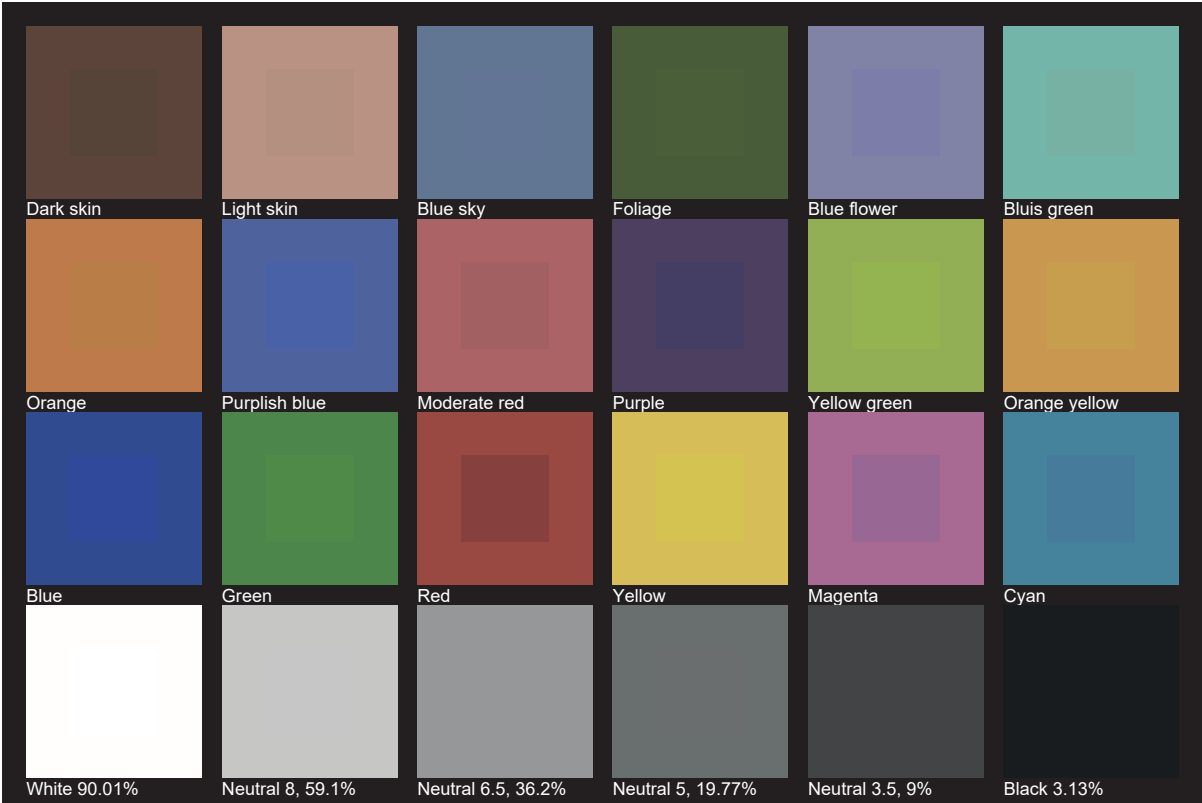
Fidelity index Rf

Rg 92.5

Gamut index Rg

Hue Bin	R _f	Shifts (%)	
		Chroma	Hue
1	67	-18%	-3%
2	70	-13%	11%
3	66	-7%	20%
4	68	3%	20%
5	77	7%	11%
6	88	6%	-3%
7	89	-5%	-6%
8	78	-13%	-4%
9	73	-21%	12%
10	58	-13%	28%
11	43	-2%	29%
12	72	6%	15%
13	81	15%	6%
14	75	19%	-10%
15	70	6%	-23%
16	78	-6%	-11%







AYRTON
Digital Lighting