

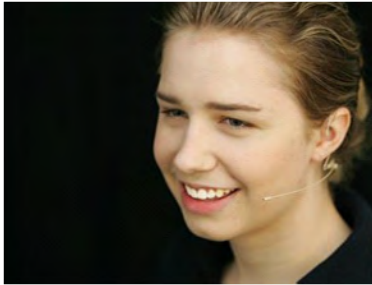


# HS-02A Dual Ear Premium Headworn Microphone

With a capsule diameter of just over 4mm, the HS-02A provides a low-profile combined with high-performance audio. This standard grade omnidirectional condenser headworn mic offers a lightweight dual ear design with a low profile adjustable boom that can be worn on the left or right. The dual ear hooks provide a very secure, inconspicuous and comfortable fit that allows maximum freedom of movement with or without glasses. The ear hooks feature a unique 'ratcheted' swivel design that enables the user to wear the boom on either side of the head and allows the ear hooks to fold flat when not in use.

The HS-02A comes with two screw-on replaceable audio cables, acoustically transparent windscreens and a MIPRO wireless bodypack adapter. Additional optional adapters are available for use with Shure, AudioTechnica, AKG, Sennheiser, Electro Voice, Lectrosonics, Sony and other belt packs. Optional Red Dot, (RD), adapters have a built in 15dB pad for use with MIPRO, AudioTechnica, AKG, Electro Voice and Shure belt packs.

The HS-02A is available in black, brown or beige. This comfortable dual ear headworn mic is a perfect solution for Houses of Worship, Theater, Lecturers, Broadcast, Corporate A/V, and other applications where premium intelligible sound and low visibility are required.

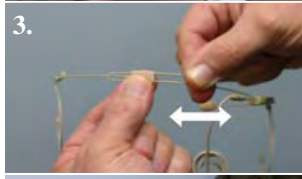


## HS-02A Specifications:

Element	Standard grade back electret condenser
Polar Pattern	Omni-directional
Frequency Response	20Hz-20KHz
Sensitivity	-42±3dB 1V/Pa @ 1KHz
Output Impedance	1100 Ohms±30%
SPL max	126 dB (155dB with optional Red Dot adapter)
Operating Voltage	2 V (0.1V-5V) D.C
Cable	Kevlar coated; 1.3m (47.25")
Colors	Beige, Brown or Black
Capsule Diameter	4.6 mm O.D.
Wireless Body Pack Adapter	Included adapter: T5 - Mipro Optional adapters: T1 & T1RD AudioTechnica, T2 & T2RD AKG, T3 - Sennheiser, T4 & T4RD Shure, T5RD Mipro, T8 - Electro Voice, T9 - Sony, T14 - Lemo and T15 - Lectrosonics
XLR Adapter	Optional adapter : MJ-53 for wired use
Accessories	Spare audio cable and windscreens Optional clothing cable clips: HS-CCLIP
Weight	21g (0.74 ounces)

# Avlex HS-02A Headworn Microphone Fitting and Handling Guide

The Avlex HS Standard Grade series of microphone booms are made of a lightweight, flexible soft metal. Please avoid bending the boom at a sharp angle. The soft metal of the premium HS-02A boom bends easily but care should be taken when making adjustments to avoid damaging the microphone. Use a round object or the edge of your finger as a guide to avoid kinking the boom. Repeated bending in the same location will eventually cause a break in the boom or internal wires. Do not attempt to bend the boom near the capsule or next to the connector.



1. The ear hooks feature a unique swivel design that enables you to wear the boom on either side of the head and allows the ear hooks to fold flat when not in use. Carefully rotate the ear hooks so that the mic boom is on the side you desire. These ear hooks turn only one direction, and only 90 degrees. The ear piece is the part that moves. It turns AFTER the joint. Exceeding these limits WILL damage the frame.

2. Holding the ear hooks at the open end, slide them over your ears coming from the back of your head; place the ear hooks over your ears letting the ratchet joint rest behind your ear lobe and the headband rest on the back of your neck. The ear hooks themselves should not need any adjustment.

3. The HS-02A headband is adjustable. If a tighter or looser fit is required, grasp the sliding block on the frame with one hand and push or pull the open end with the other to achieve the desired fit.

4. If necessary, gently curve the boom so the capsule is about a half an inch from the side of your face. Use your thumb and forefinger to shape the boom carefully. Allow at least ½ inch of straight boom next to the earpiece; this allows the headset to be properly held in position.

5. With the headset firmly on the ears, adjust the boom up or down for best capsule location. Loosening the boom nut will allow you to further adjust the overall length of the boom. The optimum position is when the capsule is located just behind the edge of your mouth when you smile. Do not position the capsule directly in front of the mouth. This will result in “pops” and breathing noise. The pickup pattern of the HS-02A will allow for the mic to function well over a large area.

6. Secure the boom to the frame utilizing the stabilizer block. Simply press the head frame wire into the slot on the stabilizer block that is attached to the boom.

7. When removing the HS-02A, grasp the boom directly in front of the ear with one hand and place a finger on the connector behind your earlobe with the other hand. Gently push up with both hands to remove the microphone. Fold the ear hooks flat and store them in the case for your next use.

The HS microphones use a replaceable, Kevlar covered cord. These cords are as light as possible in order to keep them comfortable and provide low visibility. Use caution when wearing and removing the mic and bodypack to keep the cord safe. Do not wrap excess cord around the bodypack. This will stress the cord and adapter and will result in the mini coaxial connector being broken.

Thank you for choosing the Avlex HS-02A Premium headworn microphone. We're confident you'll find it to be a premium product that is lightweight and comfortable which will produce a clear natural sound for years to come. For additional information on the HS Series of Avlex Microphones, including videos regarding fitting and handling, please visit the Avlex microphone section on our web site at [www.avlex.com](http://www.avlex.com).

## LIMITED ONE YEAR WARRANTY

This Limited Warranty is extended by Avlex Corporation to the owner of any Avlex HS or HSP series microphone purchased in the United States of America, the District of Columbia, Puerto Rico, or the US Virgin Islands. Avlex Corporation will repair or replace, at its sole option, any covered Avlex product that fails due to a defect in material or workmanship within one year following the date of the initial user purchase.

Cables and windscreens are excluded from coverage under this warranty. Product failure caused by misuse, abuse, neglect, accident, improper wiring or improper installation is not covered by this warranty.

This warranty does not cover any loss of time or income that may be caused by the failure of a warranted product. Some states do not allow the exclusion or limitation of incidental or consequential damages, so the above exclusion may not apply to you.

To obtain performance under this warranty, return the warranted product with proof of the purchase date to the place of purchase, or contact Avlex Corporation Customer Support at 877-447-9216. A Customer Support Representative will go through the standard troubleshooting procedures in an effort to resolve the problem. If it is necessary to return the product you will be given a return authorization (RA) number and shipping instructions. Please be certain to write this information down. The product being returned along with the RA number, your contact information, and proof of purchase must be securely packed in an adequate (corrugated) shipping carton. The RA number must be written on the outside of the shipping carton (on the shipping label). You will be responsible for freight charges to Avlex and the product will be returned via UPS Ground with the shipping charges prepaid. Expedited shipping is available at an additional cost.

This warranty gives you specific legal rights, and you may also have other rights which vary from state to state.