

# TT-CLIP

## Texas Tough DIN Rail Mounting Adaptor Install Sheet



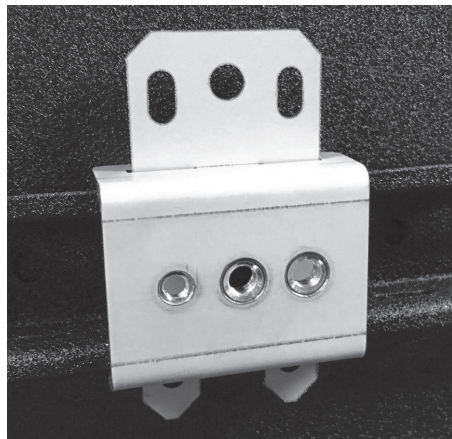
Items Included:

- (2) U-Clips
- (2) Locking Combs
- (2) 1/4-20 x 0.5" Screws

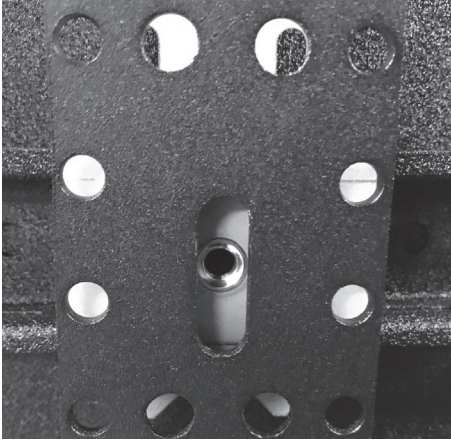
1. Place U-Clip on DIN rail in the desired position, making sure slots in the U-Clip align with the slots in the Din Rail.



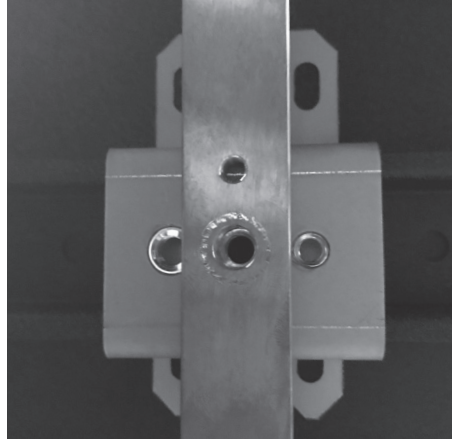
2. Insert Locking Comb into U-Clip. Push the Locking Comb all the way through the U-Clip and DIN rail, locking the U-Clip in place.



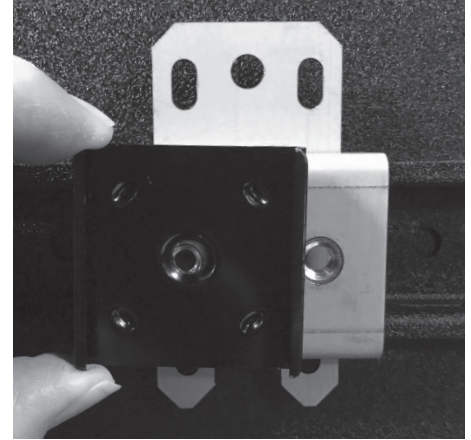
3. Repeat Steps 1-2 as many times as needed for the amount of U-Clips being used.
4. Select the accessory to be mounted in the Texas Tough Rack and align the mounting hole on the accessory with the corresponding screw hole in the U-Clip. **Note:** The included 1/4-20 x 0.5" screws will fit into the two 1/4-20 press nut holes on the U-Clip. The 10-32 press nut hole will accept the mounting bracket and screws included with Atlas Power Strips.



Vertical Lacing Bar

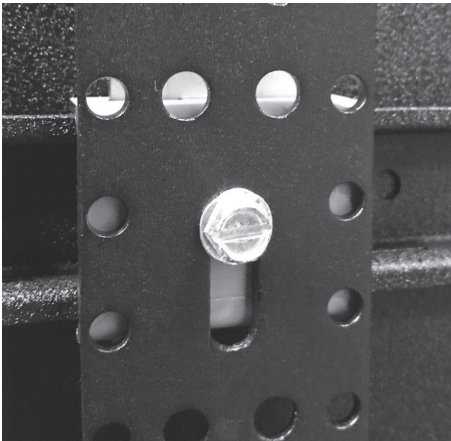


Copper Bus Grounding Bar



Atlas Power Mounting Clip

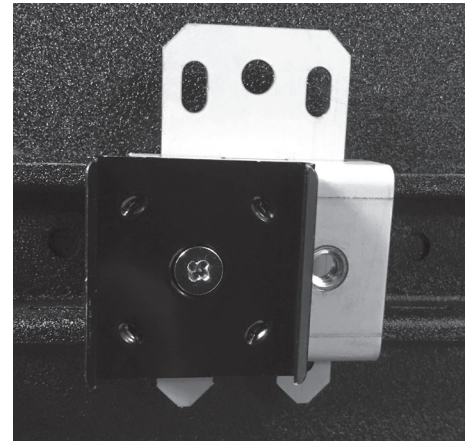
5. Take the included 1/4-20 x 0.5" screw and secure the accessory to the U-Clip.



Vertical Lacing Bar



Copper Bus Grounding Bar



Atlas Power Mounting Clip

6. Repeat Steps 4-6 as many times as needed for the amount of U-Clips being used to securely attach the accessory to the DIN rails.

©2021 Atlas Sound L.P. The Atlas "Circle-A", Soundolier, and Atlas Sound are trademarks of Atlas Sound L.P. IED is a Registered Trademark of Innovative Electronic Designs LLC. All rights reserved. All other Trademarks are property of their respective owners. No endorsement is implied. Due to continual product development, specifications are subject to change without notice. ATSO06384 RevA 1/21 PN 1-11715