

REEL



RE5 Fan Owner's Manual



Reel EFX, Inc.
5539 Riverton Ave.
North Hollywood, CA 91601
Phone: (818) 762-1710
Fax: (818) 762-1734

www.reelefx.com

TABLE OF CONTENTS

IMPORTANT SAFETY INSTRUCTIONS	3
USER SERVICING INSTRUCTIONS	4
FEATURES	5
SPECIFICATIONS	5
CONTROL PANEL	6
OPERATION AND SAFETY	7
INTRODUCTION	7
OPERATION	7
SAFETY	7
DMX INTERFACE	8
PARTS LIST	9
EXPLODED PARTS VIEW	10
REEL EFX PRODUCTS	11

IMPORTANT SAFETY INSTRUCTIONS

When using an electrical appliance, basic precautions should always be followed, including the following:

READ ALL INSTRUCTIONS BEFORE USING THIS APPLIANCE. (NOT INTENDED FOR HOUSEHOLD USE)

⚠ WARNING – TO REDUCE THE RISK OF FIRE, ELECTRIC SHOCK OR INJURY:

1. Do not leave appliance when plugged in. Unplug from outlet when not in use.
2. Always unplug or disconnect the fan from the power supply before servicing.
3. Connect to a properly grounded outlet only.
4. Do not expose to water or rain – store indoors.
5. Do not immerse the fan in water.
6. Do not allow to be used as a toy. Close attention is necessary when used by or near children.
7. Use only as described in this manual. Use only manufacturer's recommended attachments.
8. Do not operate any fan with damaged cord or plug. Discard fan or return to manufacturer for examination and/or repair. If appliance is not working as it should, has been dropped, damaged, left outdoors or dropped into water, contact manufacturer for assistance.
9. Do Not: pull or carry by cord, use cord as a handle, close door on cord or pull cord around sharp edges or corners.
10. Keep cord away from heated surfaces.
11. Do not unplug by pulling on cord. To unplug, grasp the plug; not the cord.
12. Do not handle plug or appliance with wet hands.
13. Do not insert your hand or other objects into openings. Do not use with any opening blocked; keep free of dust, lint, hair and anything that may reduce airflow.
14. Keep hair, loose clothing, fingers and all parts of body away from openings and moving parts.
15. Turn off all controls before unplugging. Wait for fan to stop before moving, storing and/or changing operating locations.
16. Do not run cord under carpeting. Do not cover cord with throw rugs, runners, or similar coverings.
17. Arrange cord away from traffic area and where it will not be tripped over. Do not route supply cord under furniture or appliances.
18. Operation of this unit can result in foreign objects being blown into eyes, which can result in eye damage. Always wear safety goggles when operating fan.
19. When necessary, only operate fan with a 12 AWG or greater extension cord not exceeding 50 feet in length provide with an attached plug rated 250V, 20 amp minimum.
20. Never use fan without safety grills attached.
21. Do not use this fan with any solid-state speed control device. (The RE 5 Fan already contains its own Solid-State Drive and Controls)
22. This product employs overload protection (fuse). A blown fuse indicates an overload or short-circuit situation. If the fuse blows, unplug the product from the outlet. Replace the fuse as per the user servicing instructions (follow product marking for proper fuse rating) and check the product. If the replacement fuse blows, a short-circuit may be present and the product should be disregarded or returned to an authorized service facility for examination and/or repair.
23. Always unplug this product before installing or replacing fuses.

READ AND SAVE THESE INSTRUCTIONS

USER SERVICING INSTRUCTIONS

- 1) Grasp plug and remove from the receptacle or other outlet device. Do not unplug by pulling on cord. Allow a 10 minute period for drive capacitors to drain prior to accessing fuse
- 2) Open fuse cover.
 - a. Carefully remove the front grill from the fan body by using a #2 Phillips head screwdriver to remove the 6 screws fastening the grill to the inner wall of the body.
 - b. Carefully remove the fuse holder cap by rotating it in the counter-clockwise direction as indicated by the arrows.
- 3) Remove fuse carefully.
- 4) Risk of fire. Replace fuse only with 25 Amp, 250 Volt fuse.
- 5) Reinstalling fuse cover.
 - a. Carefully replace the fuse-holder retaining cap by rotating it in the clockwise direction. Be sure to hand tighten firmly to ensure the cap does not become loose and disassemble.
 - b. Carefully replace the front grill and install the 6 screws with a #2 Phillips head screwdriver.

TROUBLE SHOOTING & TECHNICAL SUPPORT



Read and thoroughly understand owner's manual and all other safety instructions before Trouble Shooting. Qualified Personnel ONLY

Contact: REEL EFX INC
5539 Riverton Ave
North Hollywood, CA 91601
Phone: (818) 762 1710 Fax: (818) 7621734

Email: mark@reelefx.com

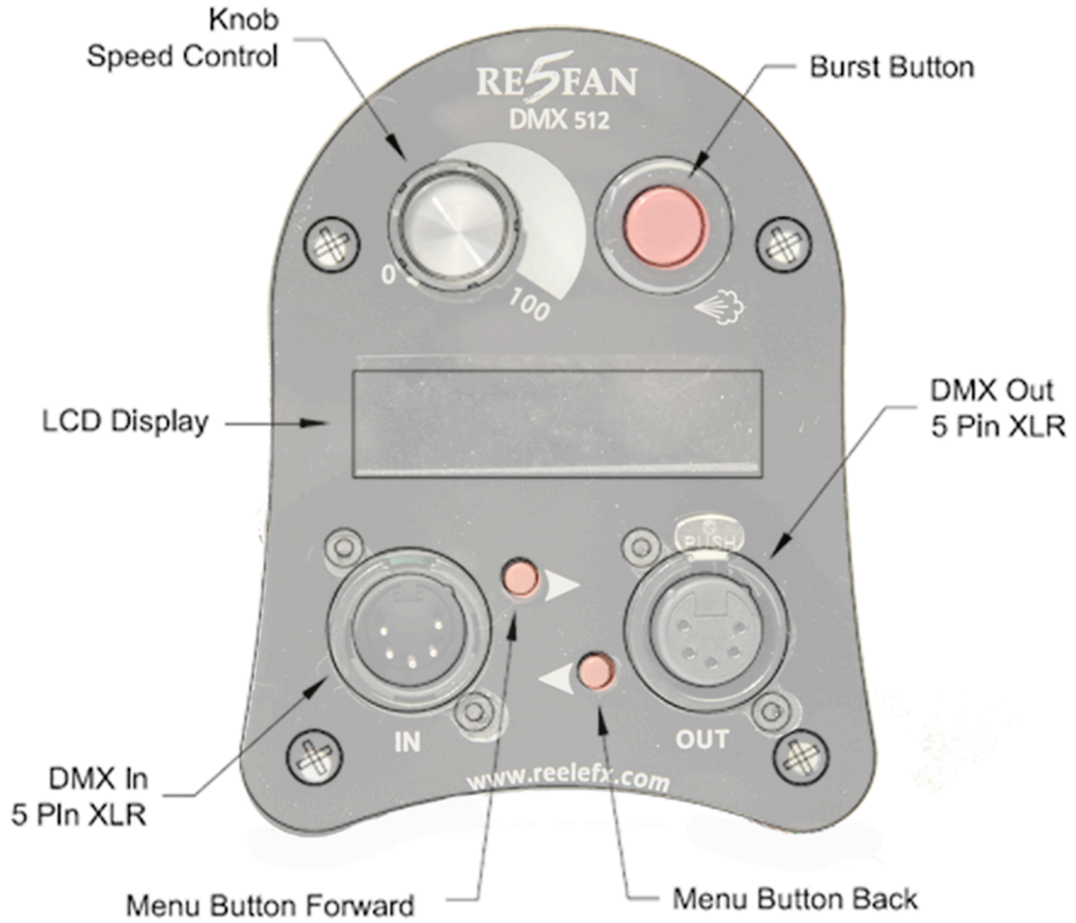
Features:

- Universal Voltage input Range: 115-240 VAC
- Active Power Factor Correction (1.0) pf at Max Load)
- Silent Smart Switching eliminates drive noise at low rpm
- Performance Improvements
 - Faster Responding Control System
 - 33% more power than its predecessor! "The RE4"
 - Improved active brake to stop blades at zero speed
 - Eco Friendly RoHs Compliant Construction

Specifications:

- Input Ratings
 - Voltage: 115 - 240 V~
 - MAX. Current: 21 – 11.6 amps
 - Phase: single
 - Max Power: 2800 W
 - Frequency: 50-60Hz
- Motor: Baldor® Premium Efficient 3 Phase
- Full Speed: 2100 RPM 39 MPH @ 1 yard on 200-240 Vac
- Speed Control: Solid State Variable Frequency Drive
 - Active Silent Smart Switching
 - Active Power Factor Correction
- DMX Control: USITT Compliant DMX 512 w/5 Pin XLR
- Mounting: Steel Floor Stand with Spud Mount
- Blades: 9 Blades 16" diameter
- Dimensions: Body size 22" x 24" Roto Molded High Impact Plastic
- Weight: 56 lbs.
- Grill: Front and rear flow enhancing Impact Resistant Nylon Grills
- Warranty: One Year Parts and Labor

CONTROL PANEL



OPERATION AND SAFETY

Introduction

The RE 5 Fan is designed for professional studio, stage, location, and theme park applications where maximum wind at the lowest possible noise level is desired.

Advanced aerodynamics, a Baldor Premium efficient motor, and sophisticated solid state drive combine to create wind in excess of 39 mph at 1 yard. Combined with a rotary molded housing, composite blade assembly and integrated DMX interface makes the RE5 FAN the quietest, lightest, most powerful, and versatile special effects fan available.

Operation

The RE5 can draw from a range of voltage sources: **115 – 240 Vac**. When connected to **115-125 Vac**, a 20 Amp service should be used as well as 12/3 heavy-duty type extension cords, when required.

When connected to **200-240 Vac**, the RE5 will engage into **“High Output Mode”**. The RE5 can use 11.6 amps at 240 Vac delivering maximum performance.

Local control is for general operation of the fan speed using a knob on the control panel. The burst button provides immediate bursts to 100% when held down and also provides a pause and resume function when tapped quickly.

DMX mode is for remote operation of fan speed using a DMX lighting console. Control panel provides input and pass-through DMX 5 Pin XLR connectors.

Using the two small push buttons and the speed control knob accesses the modes of operation. The (>) button takes you to the mode selection menu, the current operating mode will be blinking. Pressing the (>) button again will save the selection and returns to the selected operating mode. Pressing the (<) button will exit the mode selection menu without changing the current operating mode.

Safety

The RE5 Fan is extremely powerful in relation to its size and the following precautions should be followed to avoid damage or injury.

- Suction at the fan inlet is extremely strong at full power. Loose particles, dirt, etc. can be ingested and expelled at high velocity.
- Loose clothing, hair, cables, and rope should be properly restrained to avoid being ingested.
- When mounting the fan on a stand or operation on floor, be sure to sand bag appropriately to avoid damage or injury.
- If the supply cord is damaged, it must be replaced by the manufacture or authorized technician to avoid electrical hazards.

DMX INTERFACE

Description

The DMX interface is fully USITT 1990 compliant, featuring an address range of 1-512 and industry-standard 5-pin XLR connectors. The DMX input is short-circuit protected and will accept voltage up to 120VAC without damaging the interface.

Operation

The RE 5 Fan uses a single address to provide proportional motor control. Level 0 is off and 255 full power. To operate the fan using DMX, the DMX operation mode must be selected and the address set to the desired value. When a valid DMX signal is detected, the decoded level will be displayed on the LCD display.

Addressing

To set the address, the fan must be in DMX mode. Press the (>) button twice, you will see the set screen. The first character will be underlined. The underlined character can be changed, using the speed control knob. Change digits using the (>) or (<) and set the desired address. A final press of the (>) button will save the selection and exit to the DMX display screen.

Trouble-shooting

The control panel display will show the status of the incoming DMX signal and can be used to determine problems.

- **DMX Lost** The DMX signal has been interrupted or corrupted for more than 1 second.
- **DMX Error** The DMX Controller is set to an address not supported by the console.
- **Level.....** No DMX signal present.

Termination

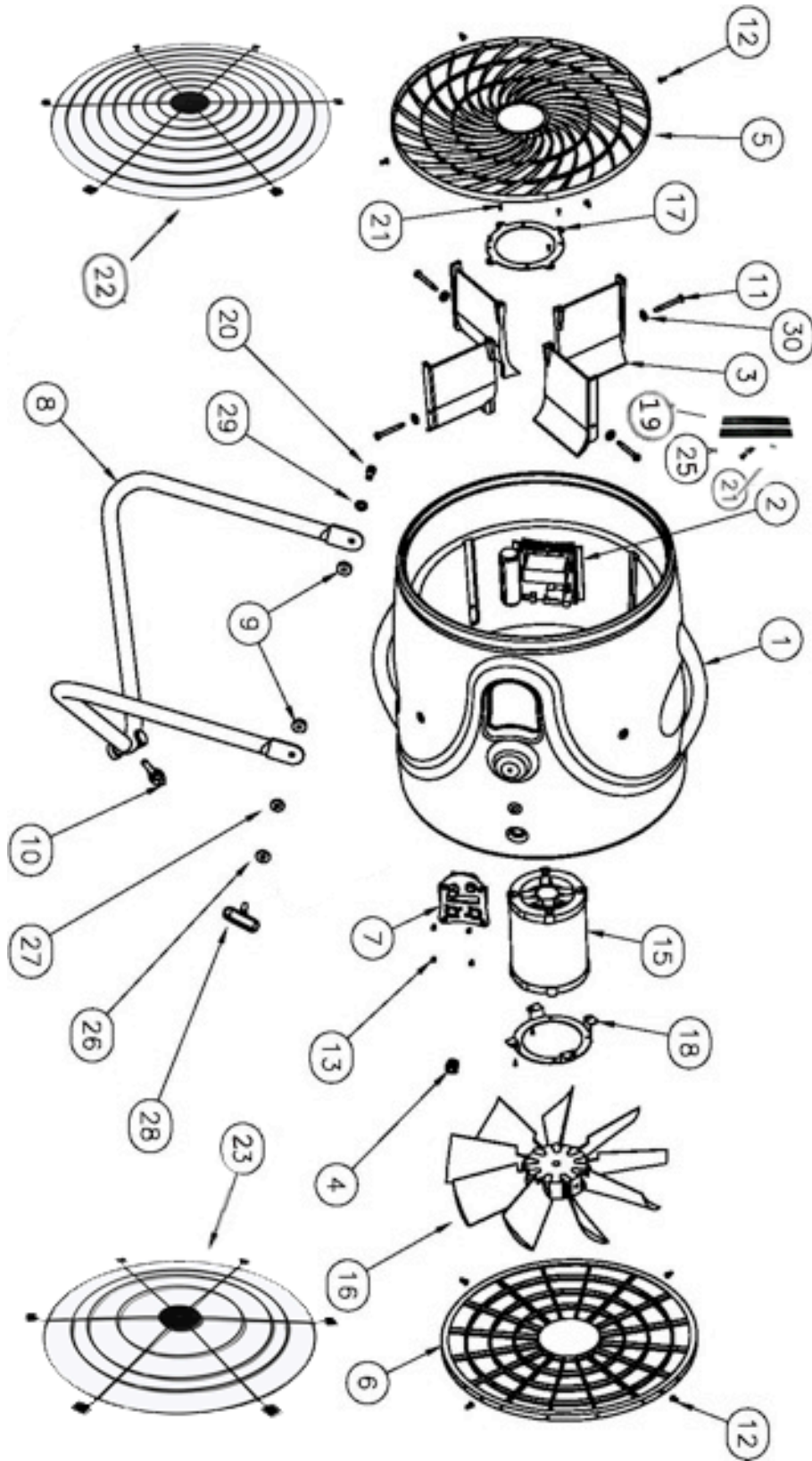
The last device on the DMX line should be properly terminated to prevent signal reflections and possible corruption of data. A standard DMX terminating plug containing a 120ohm – ½-watt resistor placed across pins 2 & 3 is recommended.

XLR Pin out

Pin 1	DMX512 common
Pin 2	Data-
Pin 3	Data+
Pin 4 & 5	Not used (passed through)

PARTS LIST

RE 5 ASSEMBLY		
ITEM	QTY	DESCRIPTION
1	1	Fan body
2	1	Speed control
3	4	Stator
4	1	Strain relief
5	1	Front grill
6	1	Rear grill
7	1	Control panel
8	1	Triangular stand
9	2	Leather washer
10	1	Tee handle (5/16-NC)
11	4	Stator screw
12	12	Front/rear grill screw
13	4	Control panel screw
14	-	-
15	1	Baldor Premium Efficient motor
16	1	Blade assembly
17	1	Front motor mount
18	1	Rear motor mount
19	2	Speed control mounting strips
20	1	3/8-NC x 1/2 cap screw
21	4-6	Speed control backing plate screws or rivets
22	1	Front wire grill UL Version Only
23	1	Rear wire grill UL Version Only
24	-	-
25	6	Speed control mounting screws
26	1	Nylon washer
27	1	Thrust bearing assembly
28	1	Tee handle (black)
29	1	3/8 flat washer
30	4	Washer A



REEL EFX PRODUCTS



DF-50 Diffusion Hazer



RE II Turbo Fan



RE5 Fan



Diffusion In A Can

Reel EFX was founded in 1982 to address the special effects needs of commercial and film production companies. Reel EFX provides the following services:

- 1) **Manufacturing and Development** of industry-leading equipment for sale through a worldwide distribution network.
- 2) **Design and fabrication of mechanical, atmospheric and physical effects** for film and television. These include pyrotechnic, flying, wind, rain, snow, fog, remote control, pneumatics, hydraulics, automobile effects, Digital Multicam and specialty props.

www.reelefx.com