

Polestar™

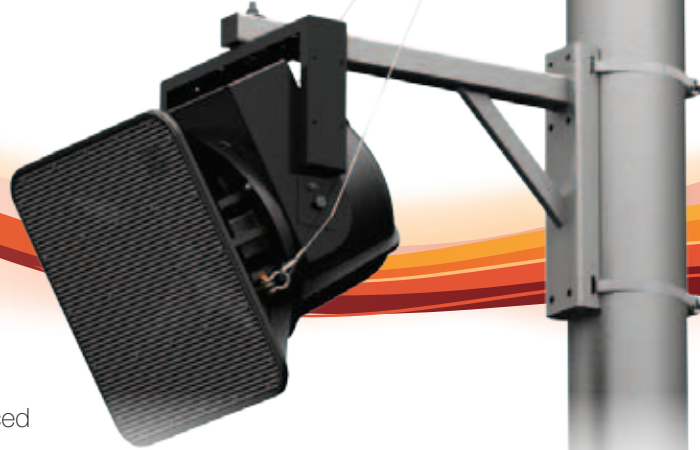
Uni-Frame - Galvanized OUTDOOR SPEAKER MOUNTING SYSTEM



The UniFrame is a complete mounting solution for outdoor loudspeakers. Its design combines the attributes of the PoleStar stainless "a-la-carte" version into just two models produced in steel and then galvanized to an outdoor weather rating.

The UniFrame reduces the amount of parts required for the job site and saves installation time by combining the support arm and the pole adapter together into one assembly. In addition, two stainless steel band kits are included, which only require a socket set to assemble.

The support arm is welded together for extra strength and durability. Each arm includes three attach point mounting holes



PM-24-6UP-G WITH
AH SERIES BY ATLAS

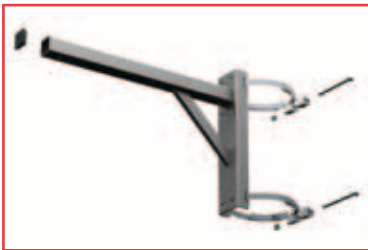
Loudspeaker and Yoke not Included.

at the end of the arm that allow the installer to select the desired distance between the loudspeaker and the pole.

One design accommodates pole diameters from 2" to 6" (50-152 mm) and the other from 6" (152 mm +) diameter poles and columns and larger.



2" - 6" Diameter Poles.
Supports one speaker only.
PM-24-6DOWN-G



6" and Larger Diameter Poles
Supports up to three speakers.
PM-24-6UP-G



Community 3-WAY COMMUNITY R 2
On 6" and Larger Diameter Poles
for 3-WAY Installations
PM-24-6UP-G

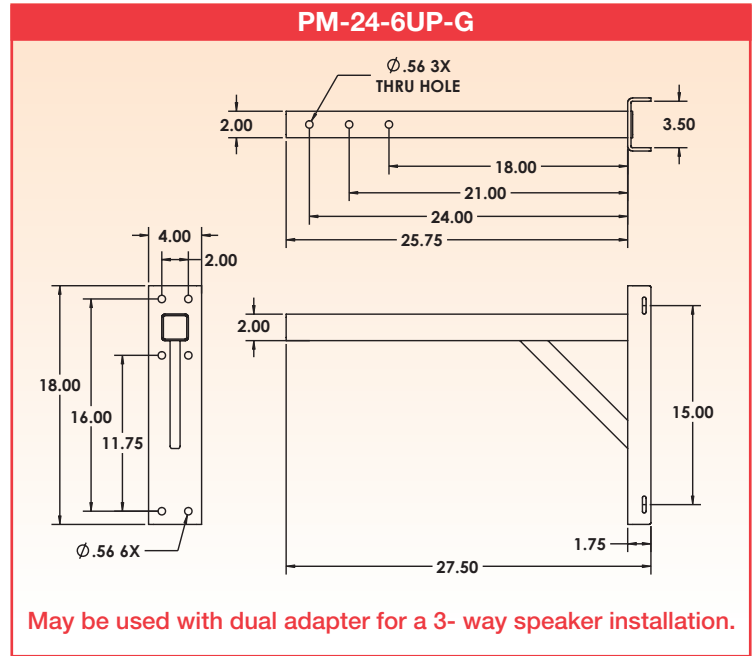
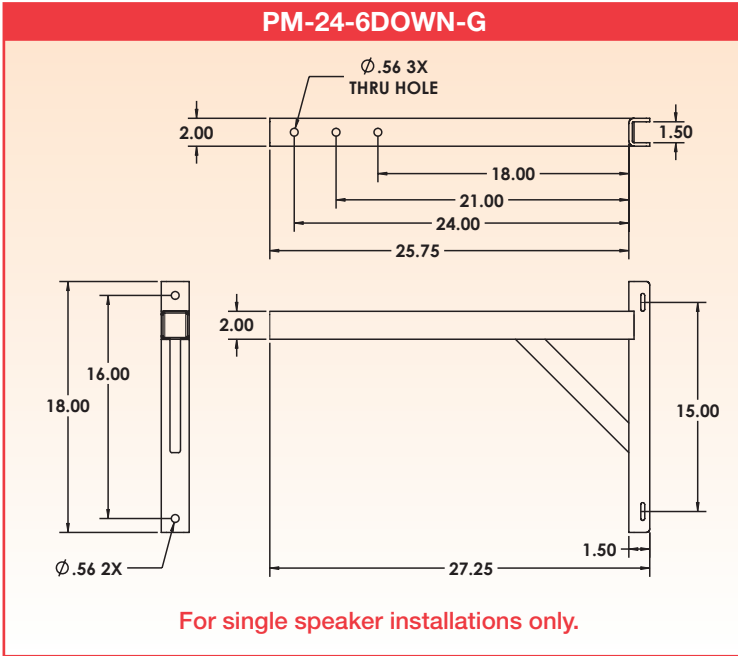


For 3-way Installations, use one
PM-24-6UP-G and one PM-DA-48-G

STANDARD FEATURES:

- Uni-Frame assembly adds strength and reduces installation time.
- Longer pole interface increases structural capacity.
- Rugged outdoor galvanized finish to ASTM A123 and ISO1461 specifications.
- Three arm mounting points to accommodate all speaker models.
- Angled brace increases structural stability during severe weather conditions.
- Support arm may be oriented up or down for installation flexibility.
- Dual adapter may be secured to the Uni-Frame for a three-way installation.

DIMENSIONS



SPECIFICATIONS

PM-24-6DOWN-G

Material: Steel Alloy
Finish: Galvanized
Color: Silver

Band Kit Included: For poles 2" to 6" in diameter
Working Load Limit: 100 lb. / 45.5 Kg per mount
Design Factor: 10:1
Weight: 12.3 lb. / 5.6 Kg
Shipping Weight: 14 lb. / 6.4 Kg
Pack Count: 1 kit per carton including 20" band kit

PM-24-6UP-G

Material: Steel Alloy
Finish: Galvanized
Color: Silver

Band Kit Included: For poles up to 25" in diameter
Working Load Limit: 100 lb. / 45.5 Kg per mounting point
 Maximum of three speakers
Design Factor: 10:1
Weight: 16.4 lb. / 7.5 Kg
Shipping Weight: 18 lb. / 8.2 Kg
Pack Count: 1 kit per carton including 90" band kit

OPTIONAL

ACCESSORY	PART NUMBER	SHIP WEIGHT	WORKING LOAD*
Safety Anchor	PM-SAFETY-6DOWN	2.8 lb. / 1.3 Kg	500 lb. / 227.3 Kg
Dual Adapter - 48" / 1220 mm	PM-DA-48-G	13 lb. / 5.9 Kg	200 lb. / 90.9 Kg
18" Safety cable with turnbuckles	SC-188-18-SS	.55 lb. / 25 Kg	840 lb. / 381.8 Kg
24" Safety cable with turnbuckles	SC-188-24-SS	.75 lb. / 34 Kg	840 lb. / 381.8 Kg
48" Safety cable with turnbuckles	SC-188-48-SS	1.05 lb. / 48 Kg	840 lb. / 381.8 Kg
72" Safety cable with turnbuckles	SC-188-72-SS	2.00 lb. / 91 Kg	840 lb. / 381.8 Kg

* Working Load Design Factor = 5:1 (Static Loading)

SPECIFIERS TAKE NOTE:

- Custom designs are also available.
- Always secure mounted objects to the mounting structure with safety cables.
- Use stainless-steel Polestar version for seaside installations.
- Contact our design department at design@adapttechgroup.com.

WARNING: Mounting and/or suspension of audio and video equipment requires experienced professionals. Improperly installed equipment can result in property damage, personal injury and/or liability to the installing contractor.

