



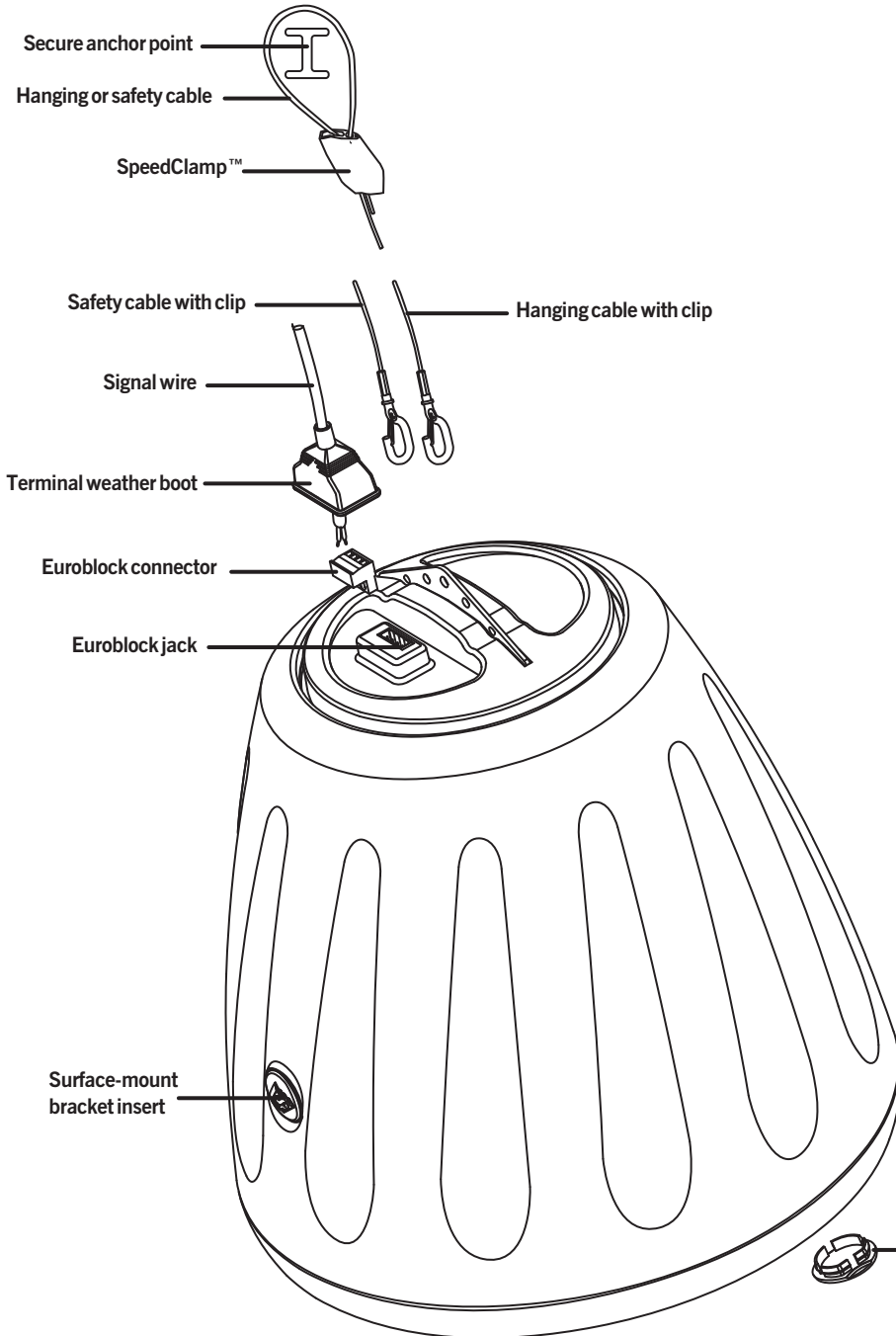
RSi Series

Install Instructions For:

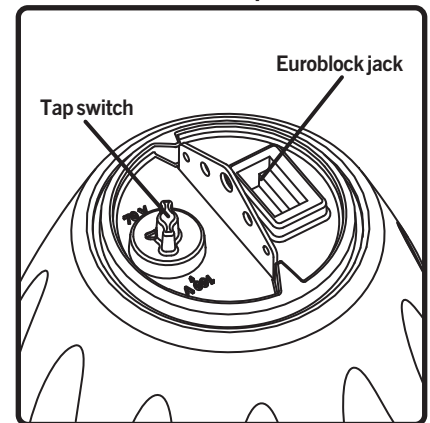
RS4-EZ, RS400i, RS500i, HP590i, RS600i, HP690i, RS800i, HP890i, RS1001i-II, HP129i & HP1290i speakers

Box contents

- 1 Speaker
- 2 SpeedClamps™
- 1 Release key (small hex wrench)
- 1 Hanging cable
- 1 Safety cable
- 1 Terminal weather boot
- 1 Euroblock connector
- 1 Grille-mounted tap switch cover
- 4 Zip ties



RS4-EZ & RS400i tap location



1.435.647.9555 | 800.647.TUBE | www.soundtube.com

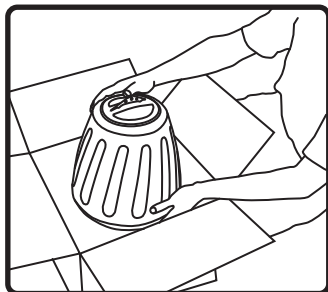
RS400i, RS500i, RS600i, RS800i, RS1001i-II, HP690i and HP890i - UL listed 1480 © 2008 SoundTube Entertainment, Inc. All rights reserved. PN INS-RSI Rev 09.15.08

Warning

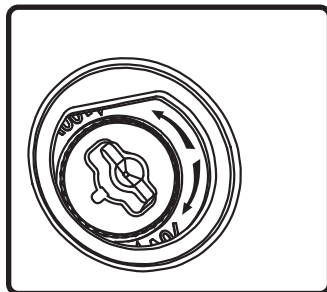
SoundTube speakers must be installed by a professional audio installer/contractor. For safety and for optimum audio performance, installer must follow all directions issued by SoundTube Entertainment.

Warning

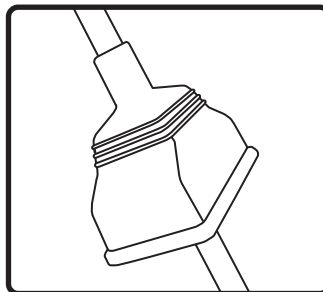
Do not spec or install speaker near support beam, ventilation duct or other structure that may interfere with speaker function or dispersion.



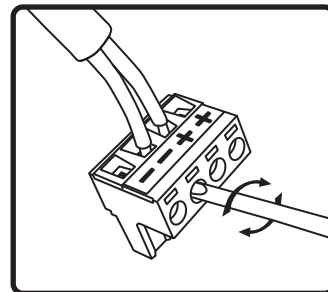
1. Unpack speaker and SpeedClamp™ mounting hardware.



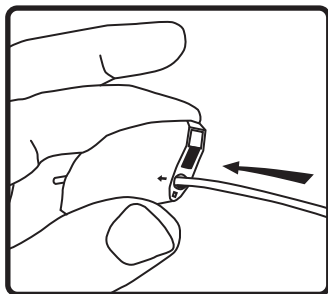
2. Select the tap position by removing the rubber plug on grille to access rotary switch. Switch is preset to maximum tap setting in 70.7 V mode. Select desired setting and reinsert rubber plug. **Note:** The grille-mounted tap switch cover is keyed; be sure flat edge of plug lines up with flat edge of hole in grille.



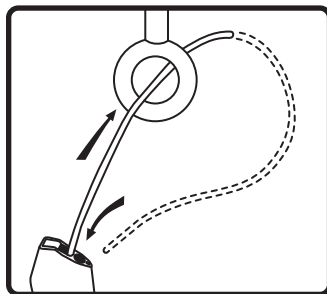
3. Slip terminal weather boot over signal wire. For environmental applications, put RTV silicone around nipple and base when installation is complete.



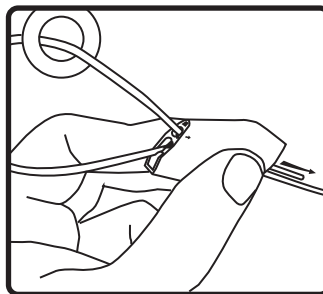
4. Connect signal wire to 4-pin Euroblock plug. Tighten unused terminal screws. Use inside positive and negative inputs for either voice coil or distributed systems. For daisy chaining, use outside positive and negative terminals.



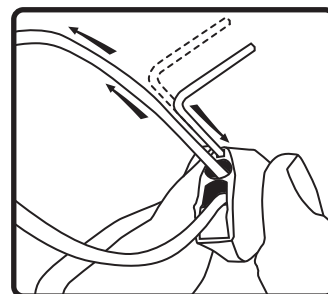
5. Thread hanging or safety cable through SpeedClamp™ mechanisms as shown.



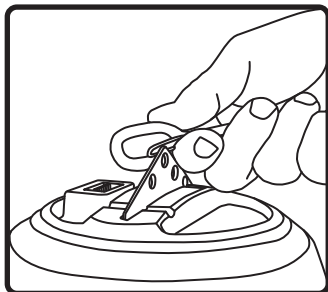
6. Attach the hanging cable by securing it and safety cable to structure as shown.



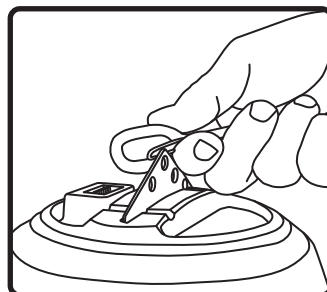
7. Thread cable end(s) through SpeedClamp™ mechanisms as shown.



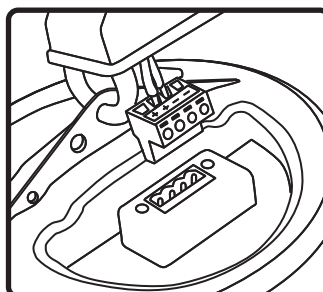
8. Adjust speaker hanging height with SpeedClamp™ mechanism. Pull to tighten & insert release key (small hex wrench) into SpeedClamp™ as shown to loosen or adjust.



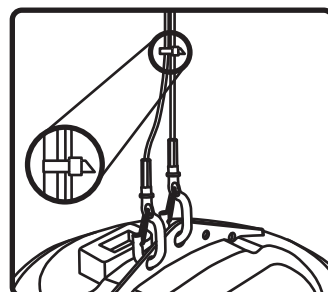
9. Attach hanging cable to the center hole in the speaker hanging bracket.



10. Attach the safety cable to one of the secondary holes in the hanging bracket.



11. Insert 4-pin Euroblock plug into Euroblock jack on rear of speaker. Connectors are keyed for polarity.



12. Use zip or twist-lock ties to secure safety cable & signal wire to main hanging cables. Cable cover available for aesthetic applications (SLT-10).